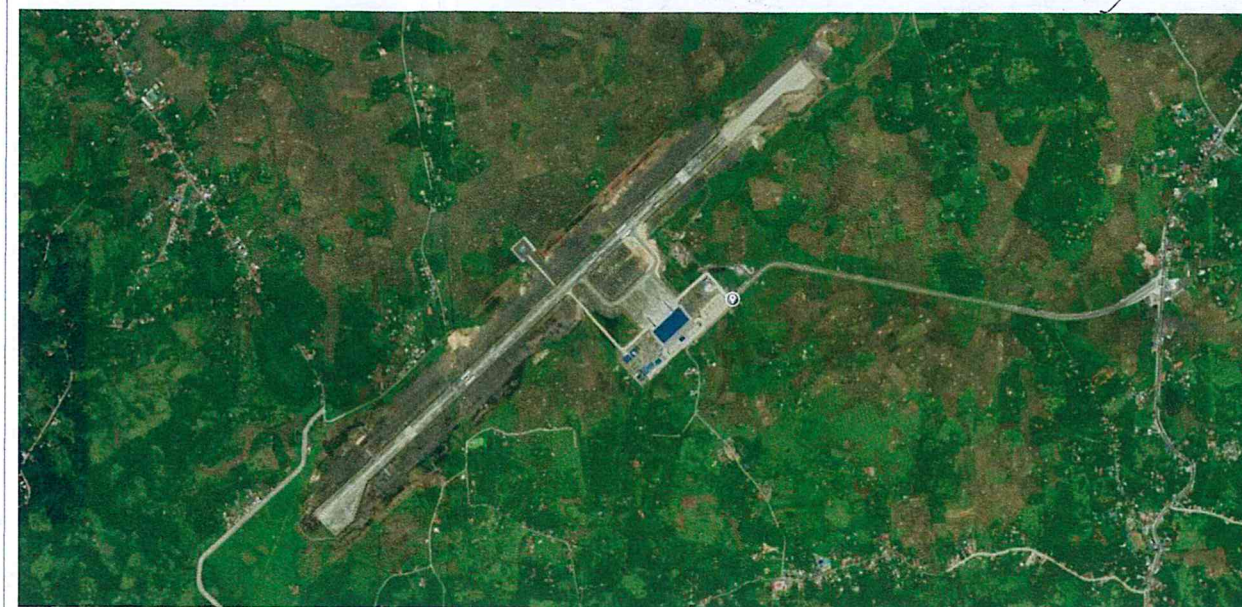
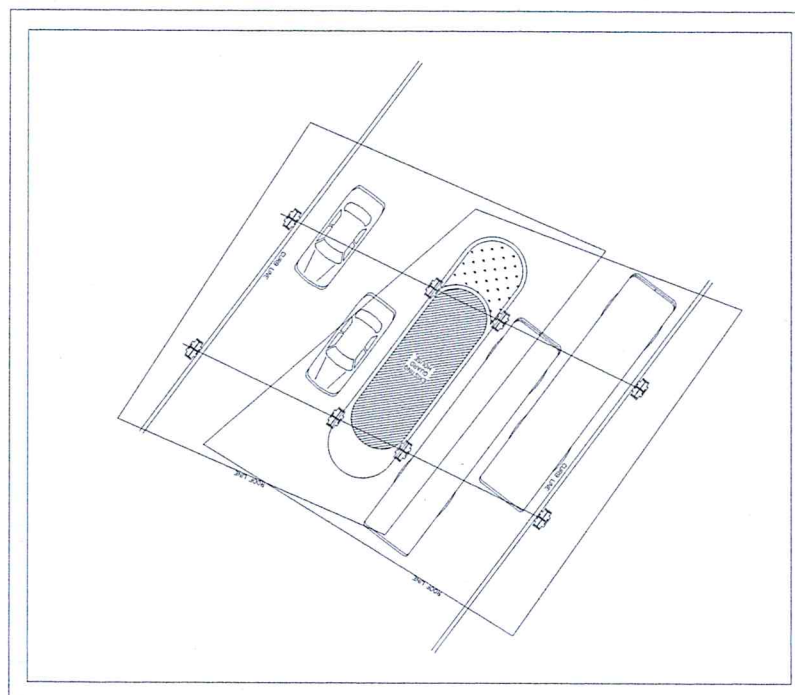




1 PERSPECTIVE
01 01 SCALE: NTS



2 VICINITY MAP
01 01 SCALE: NTS



3 BLOW-UP PLAN
01 01 SCALE: 1 : 200 M



4 LOCATION MAP
01 01 SCALE: NTS



CIVIL AVIATION AUTHORITY OF THE PHILIPPINES
MANILA, PHILIPPINES

THIS DRAWING IS AN EXCLUSIVE PROPERTY OF CIVIL AVIATION AUTHORITY OF THE PHILIPPINES AND MUST NOT BE REPRODUCED, EXHIBITED, LOANED NOR COPIED IN PART OR IN WHOLE WITHOUT PROPER PERMISSION AND/OR WRITTEN CONSENT FROM THE CAAP DIRECTOR GENERAL

AERODROME DEVELOPMENT AND MANAGEMENT SERVICE

INFRASTRUCTURE DEVELOPMENT AND DESIGN DIVISION

DESIGN STAFF:	INITIAL / DATE
DESIGNED BY: IDDD	
DRAWN BY: JCCS	
CHECKED BY: FMN	
EPS	

REVIEWED BY:

EMERSON P. SALAS
Supervising Aerodrome Engineer, IDDD-ADMS

SUBMITTED BY:

ARNEL F. BORLADO
Department Manager III, AED-ADMS

RECOMMENDED APPROVAL:

LT COL. VALENTINO A. DIONELA PAF (RET)
ADG II, ADMS

APPROVED:

CAPTAIN MANUEL ANTONIO L. TAMAYO
Director General

NOTES / REVISIONS:

PROJECT TITLE:

PROVISION OF COVERED SHED AT MAIN GATE

LOCATION:

BICOL INTERNATIONAL AIRPORT
DARAGA, ALBAY

SHEET CONTENTS:

- PERSPECTIVE
- VICINITY MAP
- BLOW-UP PLAN
- LOCATION

DRAWING SCALE:

AS SHOWN

SHEET NO.

01



CIVIL AVIATION AUTHORITY OF THE PHILIPPINES
1000, 1000, 1000, 1000

THIS DRAWING IS AN EXCLUSIVE PROPERTY
OF CIVIL AVIATION AUTHORITY OF THE
PHILIPPINES AND MUST NOT BE REPRODUCED,
EXHIBITED, LOANED NOR COPIED IN PART OR
IN WHOLE WITHOUT PROPER PERMISSION
AND/OR WRITTEN CONSENT FROM THE CAAP
DIRECTOR GENERAL.

AERODROME DEVELOPMENT
AND MANAGEMENT SERVICE

INFRASTRUCTURE DEVELOPMENT
AND DESIGN DIVISION

DESIGN STAFF:	INITIAL / DATE
DESIGNED BY:	IDDD
DRAWN BY:	JCCS
CHECKED BY:	FMN
	EPS

REVIEWED BY:

EMERSON P. SALAS
Acting Division Chief III, IDDD-ADMS

SUBMITTED BY:

ARNEL F. BORLADO
Department Manager III, AED-ADMS

RECOMMENDED APPROVAL:

LT COL. VALENTINO A. DIONELA PAF (RET)
ADG II, ADMS

APPROVED:

CAPTAIN MANUEL ANTONIO L. TAMAYO
Director General

NOTES / REVISIONS:

PROJECT TITLE:

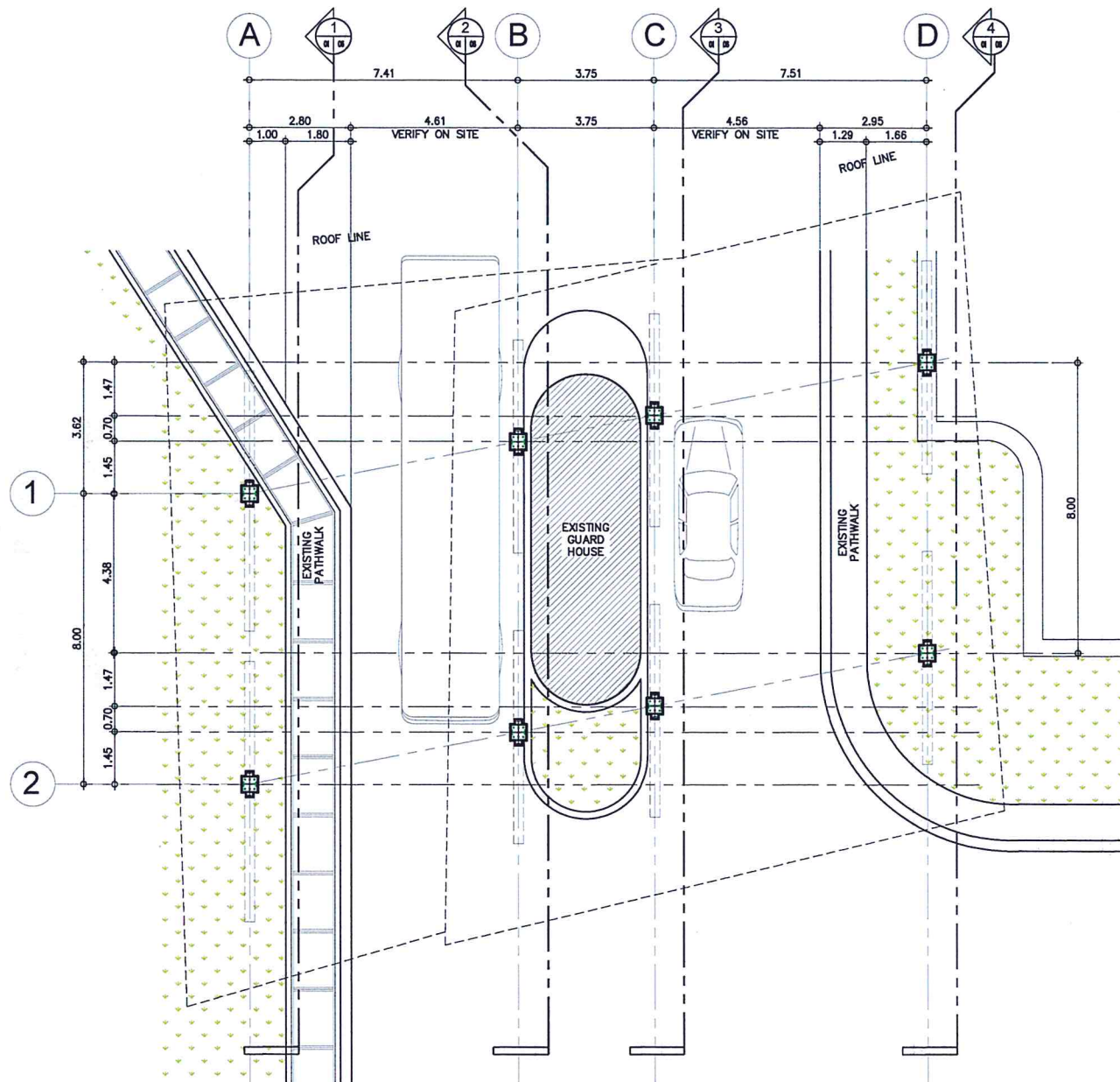
PROVISION OF COVERED
SHED AT MAIN GATE

LOCATION:

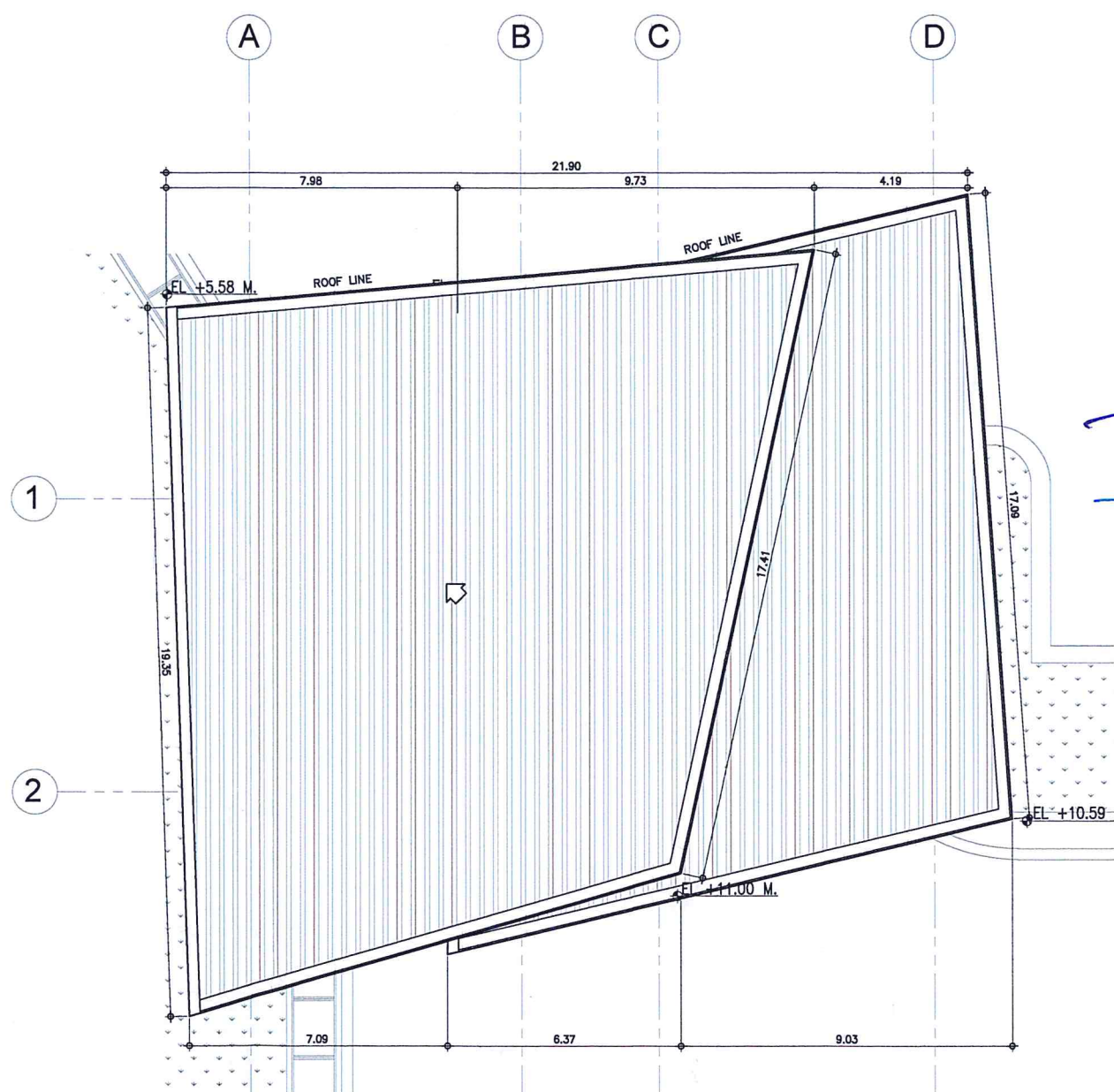
BICOL INTERNATIONAL
AIRPORT
DARAGA, ALBAY

SHEET CONTENTS:
- FLOOR PLAN
- ROOF PLAN

DRAWING SCALE:	SHEET NO:
AS SHOWN	02



1 FLOOR PLAN
02 02 SCALE: 1 : 100 M



2 ROOF PLAN
02 02 SCALE: 1 : 100 M



CIVIL AVIATION AUTHORITY OF THE PHILIPPINES
MANILA, VIENNA CITY

THIS DRAWING IS AN EXCLUSIVE PROPERTY
OF CIVIL AVIATION AUTHORITY OF THE
PHILIPPINES AND MUST NOT BE REPRODUCED,
EXHIBITED, LOANED NOR COPIED IN PART OR
IN WHOLE WITHOUT PROPER PERMISSION
AND/OR WRITTEN CONSENT FROM THE CAAP
DIRECTOR GENERAL.

AERODROME DEVELOPMENT
AND MANAGEMENT SERVICE

INFRASTRUCTURE DEVELOPMENT
AND DESIGN DIVISION

DESIGN STAFF:	INITIAL / DATE
DESIGNED BY:	IDDD
DRAWN BY:	JCCS
CHECKED BY:	FMN
	EPS

REVIEWED BY:

EMERSON P. SALAS
Supervising Aerodrome Engineer, IDDD-ADMS

SUBMITTED BY:

ARNEL F. BORLADO
Department Manager III, AED-ADMS

RECOMMENDED APPROVAL:

LT COL. VALENTINO A. DIONELA PAF (RET)
ADG II, ADMS

APPROVED:

CAPTAIN MANUEL ANTONIO L. TAMAYO
General

NOTES / REVISIONS:

PROJECT TITLE:

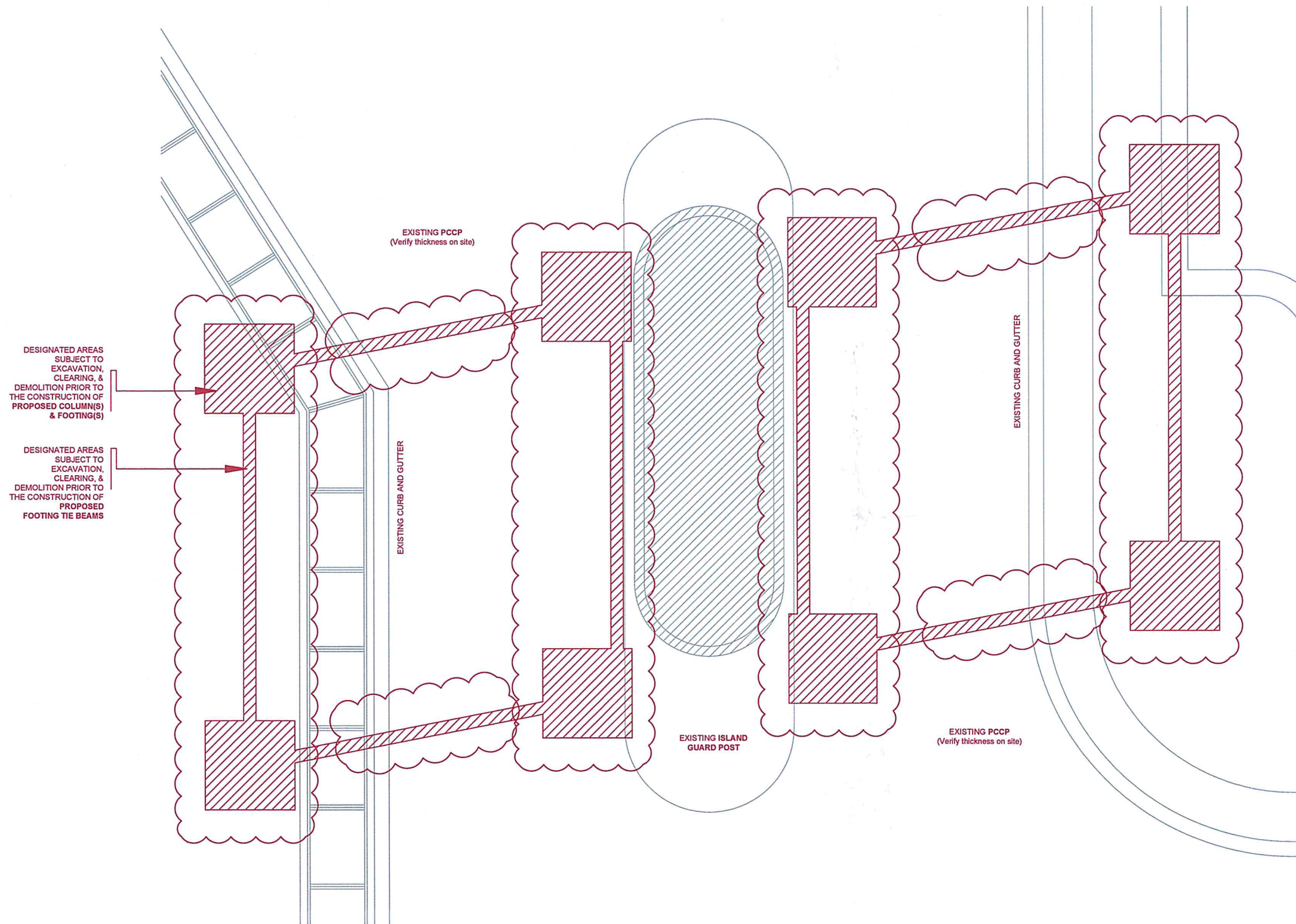
PROVISION OF COVERED
SHED AT MAIN GATE

LOCATION:

BICOL INTERNATIONAL
AIRPORT
DARAGA, ALBAY

SHEET CONTENTS:
- DEMOLITION PLAN

DRAWING SCALE:	SHEET NO:
AS SHOWN	



1 DEMOLITION PLAN
SCALE: 1 : 50 M



CIVIL AVIATION AUTHORITY OF THE PHILIPPINES
1000, 1000, 1000, 1000

THIS DRAWING IS AN EXCLUSIVE PROPERTY
OF CIVIL AVIATION AUTHORITY OF THE
PHILIPPINES AND MUST NOT BE REPRODUCED,
EXHIBITED, LOANED NOR COPIED IN PART OR
IN WHOLE WITHOUT PROPER PERMISSION
AND/OR WRITTEN CONSENT FROM THE CAAP
DIRECTOR GENERAL.

AERODROME DEVELOPMENT
AND MANAGEMENT SERVICE

INFRASTRUCTURE DEVELOPMENT
AND DESIGN DIVISION

DESIGN STAFF:	INITIAL / DATE
DESIGNED BY:	IDDD
DRAWN BY:	JCCS
CHECKED BY:	FMN
	EPS

REVIEWED BY:

EMERSON P. SALAS
Acting Division Chief III, IDDD-ADMS

SUBMITTED BY:

ARNEL F. BORLADO
Department Manager III, AED-ADMS

RECOMMENDED APPROVAL:

LT COL VALENTINO A. DIONELA PAF (RET)
ADG II, ADMS

APPROVED:

CAPTAIN MANUEL ANTONIO L. TAMAYO
Director General

NOTES / REVISIONS:

PROJECT TITLE:

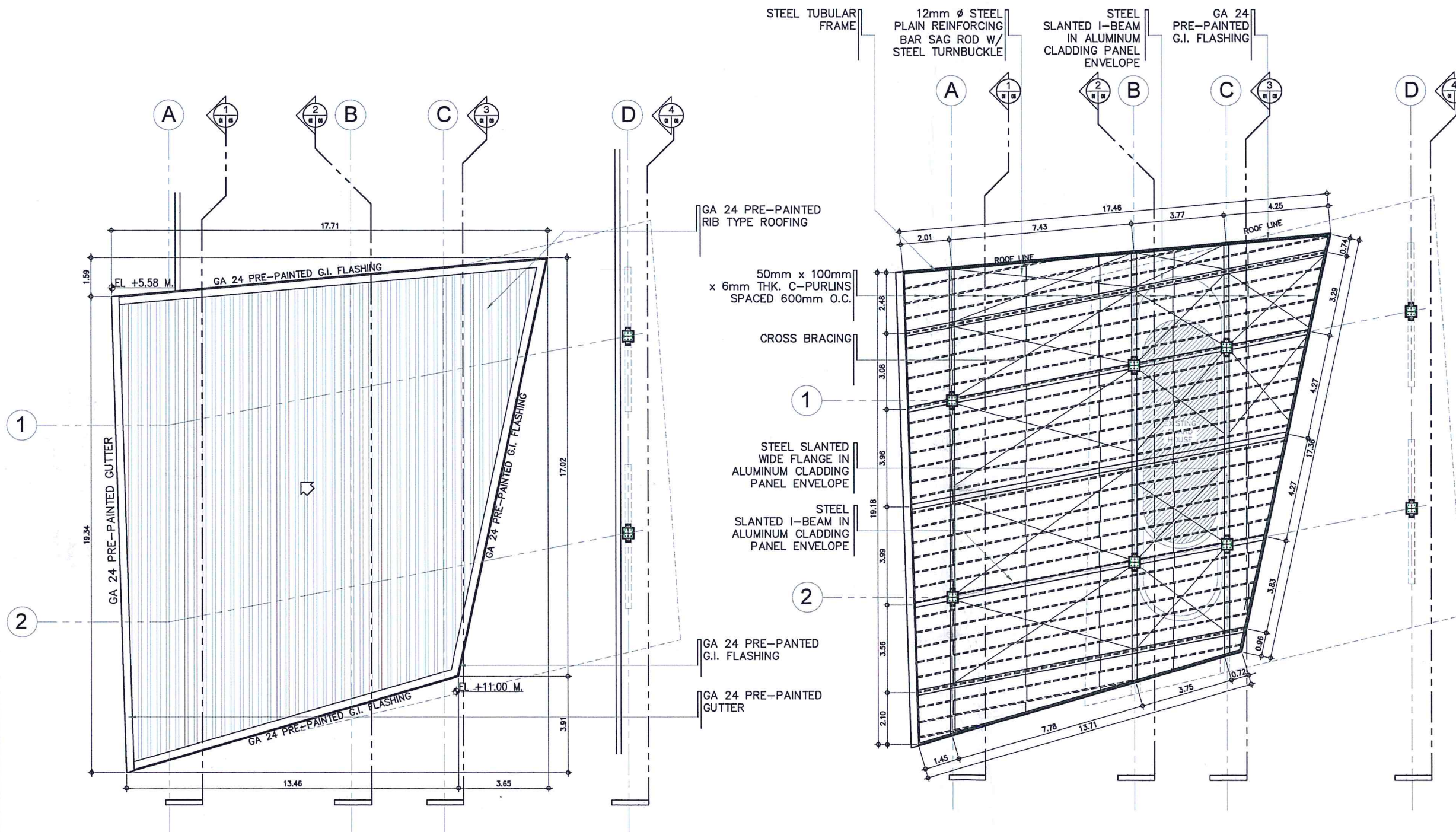
PROVISION OF COVERED
SHED AT MAIN GATE

LOCATION:

BICOL INTERNATIONAL
AIRPORT
DARAGA, ALBAY

SHEET CONTENTS:
- ROOF PLAN
- ROOF FRAMING PLAN

DRAWING SCALE: SHEET NO:
AS SHOWN



1 ROOF 'A' PLAN
SCALE: 1 : 100 M

2 ROOF 'A' FRAMING PLAN
SCALE: 1 : 100 M



CIVIL AVIATION AUTHORITY OF THE PHILIPPINES
NATIONAL INFRASTRUCTURE

THIS DRAWING IS AN EXCLUSIVE PROPERTY
OF CIVIL AVIATION AUTHORITY OF THE
PHILIPPINES AND MUST NOT BE REPRODUCED,
EXHIBITED, LOANED NOR COPIED IN PART OR
IN WHOLE WITHOUT PROPER PERMISSION
AND/OR WRITTEN CONSENT FROM THE CAAP
DIRECTOR GENERAL.

AERODROME DEVELOPMENT
AND MANAGEMENT SERVICE

INFRASTRUCTURE DEVELOPMENT
AND DESIGN DIVISION

DESIGN STAFF:	INITIAL / DATE
DESIGNED BY:	IDDD
DRAWN BY:	JCCS
CHECKED BY:	FMN
	EPS

REVIEWED BY:

EMERSON P. SALAS
Acting Division Chief III, IDDD-ADMS

SUBMITTED BY:

ARNEL F. BORLADO
Department Manager III, AED-ADMS

RECOMMENDED APPROVAL:

LT COL. VALENTINO A. DIONELA PAF (RET)
ADG II ADMS

APPROVED:

CAPTAIN MANUEL ANTONIO L. TAMAYO
Director General

NOTES / REVISIONS:

PROJECT TITLE:

PROVISION OF COVERED
SHED AT MAIN GATE

LOCATION:

BICOL INTERNATIONAL
AIRPORT
DARAGA, ALBAY

SHEET CONTENTS:

- ROOF PLAN
- ROOF FRAMING PLAN

DRAWING SCALE: SHEET NO:

AS SHOWN

GA 24
PRE-PAINTED RIB
TYPE ROOFING

STEEL TUBULAR
FRAME

50mm x
100mm x 6mm THK.
C-PURLINS SPACED
600mm O.C.

GIRDERS: W10X12
STEEL WIDE FLANGE
IN ALUMINUM
CLADDING PANEL
ENVELOPE

GA 24
PRE-PAINTED
G.I. FLASHING

A

1

2

B

C

3

D

4

ROOF LINE

EL. +7.10 M.

GA 24 PRE-PAINTED GUTTER

GA 24 PRE-PAINTED G.I. FLASHING

GA 24 PRE-PAINTED G.I. FLASHING

12mm ϕ STEEL
PLAIN REINFORCING
BAR SAG ROD W/
STEEL TURNBUCKLE

1

GIRDERS: W10X12
STEEL WIDE FLANGE
IN ALUMINUM
CLADDING PANEL
ENVELOPE

MAIN COLUMN: W14X22
STEEL WIDE FLANGE
WELDED IN ALUMINUM
CLADDING PANEL ENVELOPE

2

STEEL TUBULAR
FRAME

10mm ϕ PLAIN
REINFORCING BAR
FOR CROSS-BRACING

A

1

2

B

C

3

D

4

ROOF LINE

1.78

3.85

14.31

7.72

0.95

3.93

2.64

2.68

17.44

2.71

2.71

2.78

2.78

2.78

2.78

2.78

2.78

2.78

2.78

2.78

2.78

2.78

2.78

2.78

2.78

2.78

2.78

2.78

2.78

2.78

2.78

2.78

2.78

2.78

2.78

2.78

2.78

2.78

2.78

2.78

2.78

2.78

2.78

2.78

2.78

2.78

2.78

2.78

2.78

2.78

2.78

2.78

2.78

2.78

2.78

2.78

2.78

2.78

2.78

2.78

1 ROOF 'B' PLAN
SCALE: 1 : 100 M

2 ROOF 'B' FRAMING PLAN
SCALE: 1 : 100 M



CIVIL AVIATION AUTHORITY OF THE PHILIPPINES
BANGKOC, METRO MANILA

THIS DRAWING IS AN EXCLUSIVE PROPERTY
OF CIVIL AVIATION AUTHORITY OF THE
PHILIPPINES AND MUST NOT BE REPRODUCED,
EXHIBITED, LOANED NOR COPIED IN PART OR
IN WHOLE WITHOUT PROPER PERMISSION
AND/OR WRITTEN CONSENT FROM THE CAAP
DIRECTOR GENERAL.

AERODROME DEVELOPMENT
AND MANAGEMENT SERVICE

INFRASTRUCTURE DEVELOPMENT
AND DESIGN DIVISION

DESIGN STAFF:	INITIAL / DATE
DESIGNED BY:	IDDD
DRAWN BY:	JCCS
CHECKED BY:	FMN
	EPS

REVIEWED BY:

EMERSON P. SALAS
Supervising Aerodrome Engineer, IDDD-ADMS

SUBMITTED BY:

ARNEL F. BORLADO
Department Manager III, AED-ADMS

RECOMMENDED APPROVAL:

LT COL VALENTINO A. DIONELA PAF (RET)
ADG II, ADMS

APPROVED:

CAPTAIN MANUEL ANTONIO L. TAMAYO
Director General

NOTES / REVISIONS:

PROJECT TITLE:

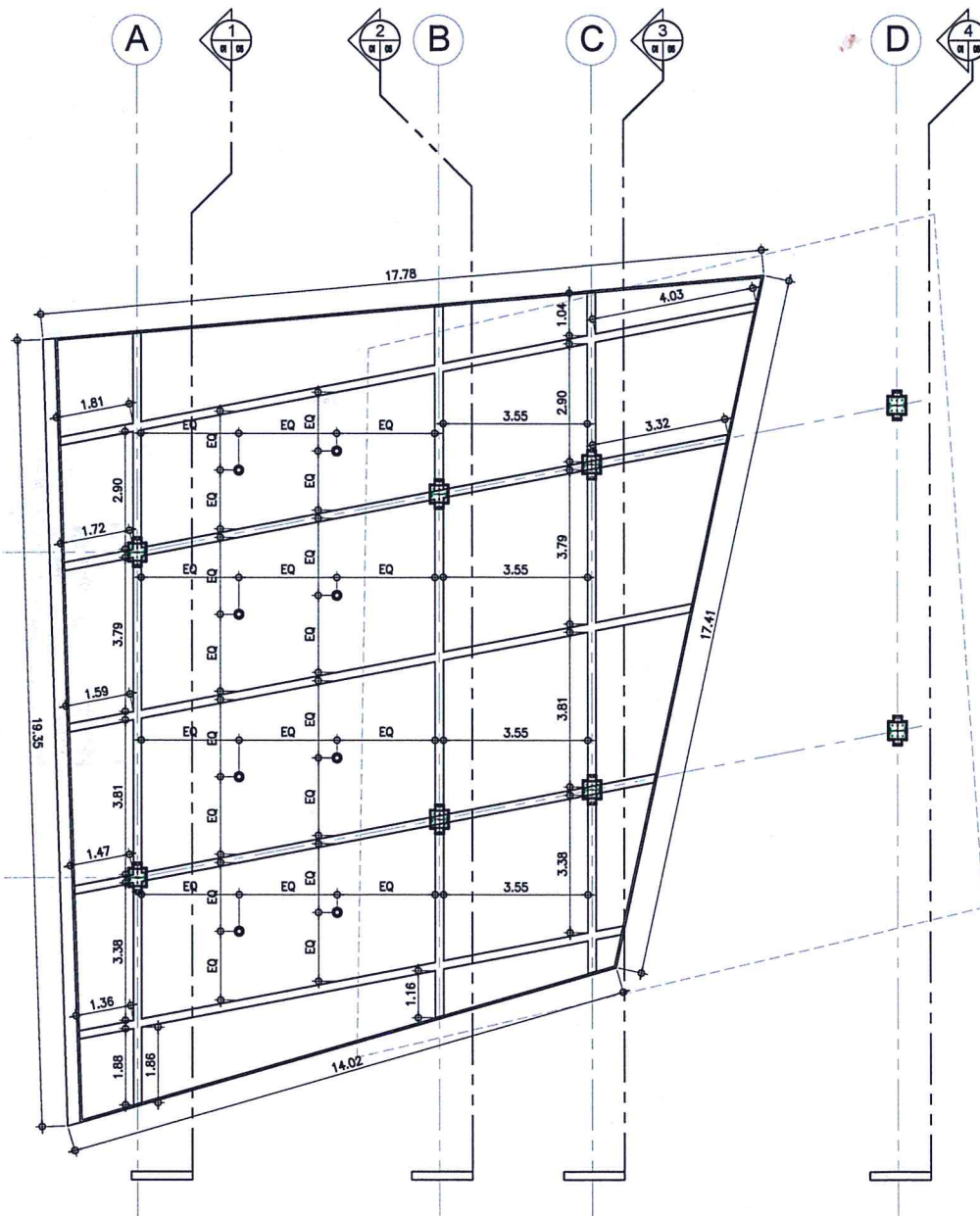
PROVISION OF COVERED
SHED AT MAIN GATE

LOCATION:

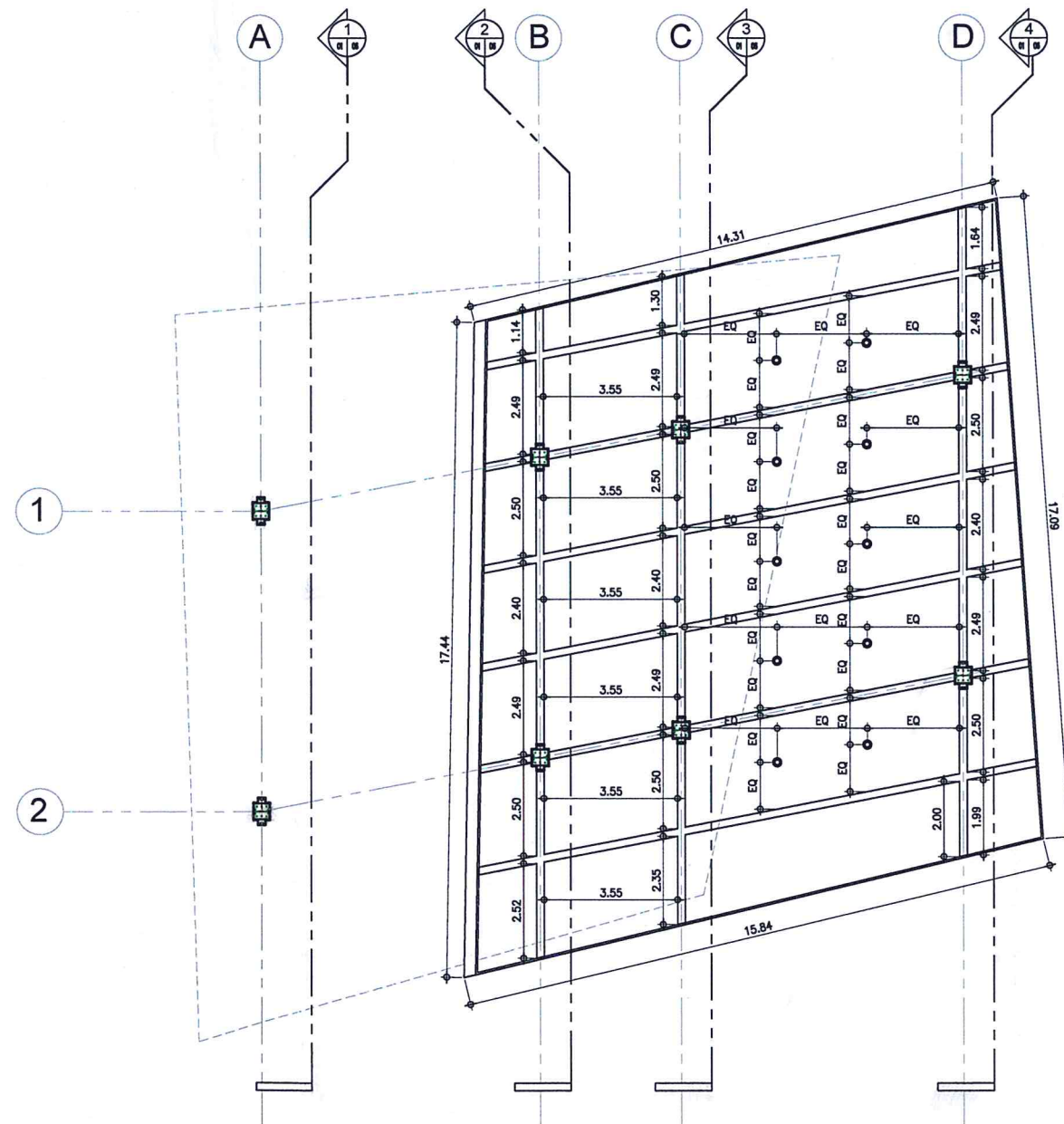
BICOL INTERNATIONAL
AIRPORT
DARAGA, ALBAY

SHEET CONTENTS:
- REFLECTED CEILING PLANS

DRAWING SCALE:	SHEET NO:
AS SHOWN	03



1
03 03
ROOF 'A'
REFLECTED CEILING PLAN
SCALE: 1 : 100 M



2
03 03
ROOF 'B'
REFLECTED CEILING PLAN
SCALE: 1 : 100 M

LEGEND:

⊙ SURFACE MOUNTED LED
DOWNLIGHT



CIVIL AVIATION AUTHORITY OF THE PHILIPPINES
MANILA, PHILIPPINES

THIS DRAWING IS AN EXCLUSIVE PROPERTY
OF CIVIL AVIATION AUTHORITY OF THE
PHILIPPINES AND MUST NOT BE REPRODUCED,
EXHIBITED, LOANED NOR COPIED IN PART OR
IN WHOLE WITHOUT PROPER PERMISSION
AND/OR WRITTEN CONSENT FROM THE CAAP
DIRECTOR GENERAL.

AERODROME DEVELOPMENT
AND MANAGEMENT SERVICE

INFRASTRUCTURE DEVELOPMENT
AND DESIGN DIVISION

DESIGN STAFF:	INITIAL / DATE
DESIGNED BY:	IDDD
DRAWN BY:	JCCS
CHECKED BY:	FMN
	EPS

REVIEWED BY:

EMERSON P. SALAS
Supervising Aerodrome Engineer, IDDD-ADMS

SUBMITTED BY:

ARNEL F. BORLADO
Department Manager III, AED-ADMS

RECOMMENDED APPROVAL:

LT COL VALENTINO A. DIONELA PAF (RET)
ADG II, ADMS

APPROVED:

CAPTAIN MANUEL ANTONIO L. TAMAYO
Commanding Officer

NOTES / REVISIONS:

PROJECT TITLE:

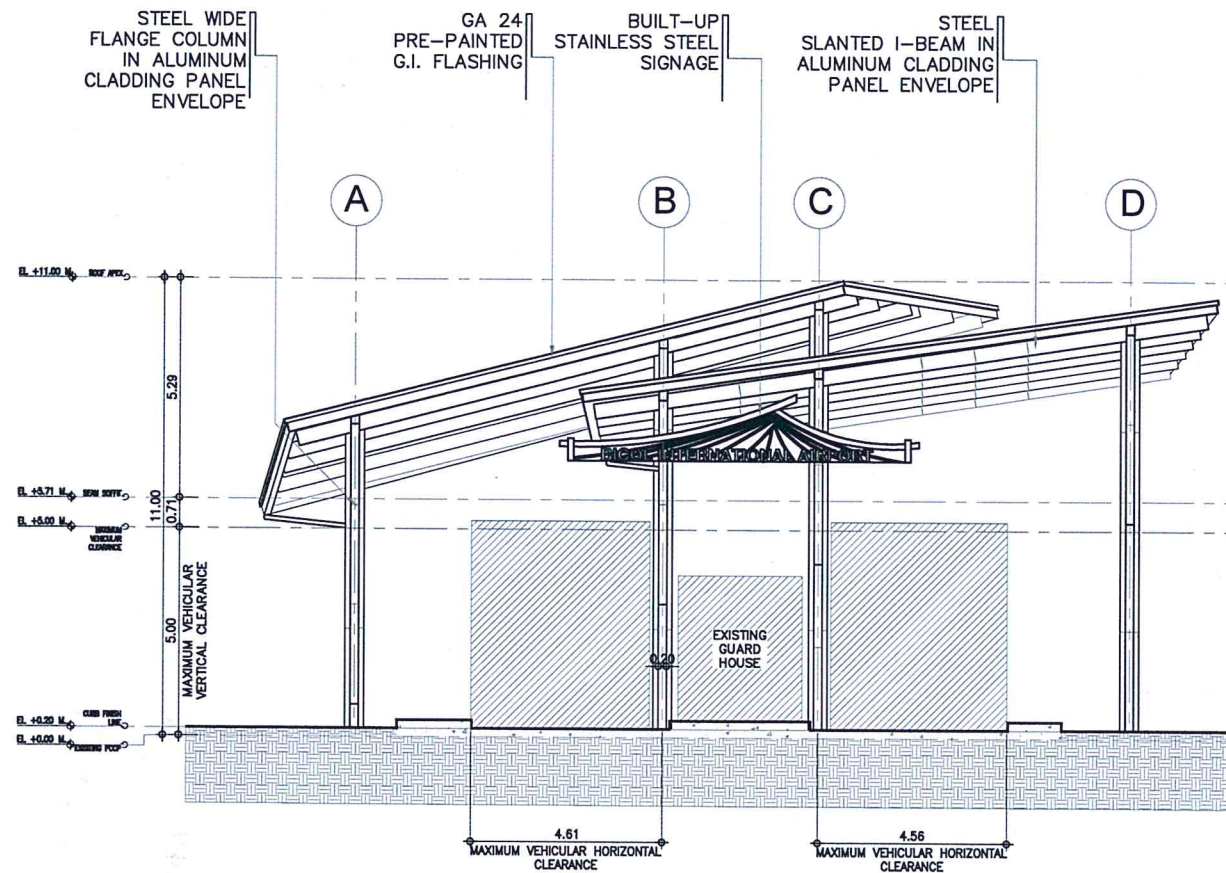
PROVISION OF COVERED
SHED AT MAIN GATE

LOCATION:

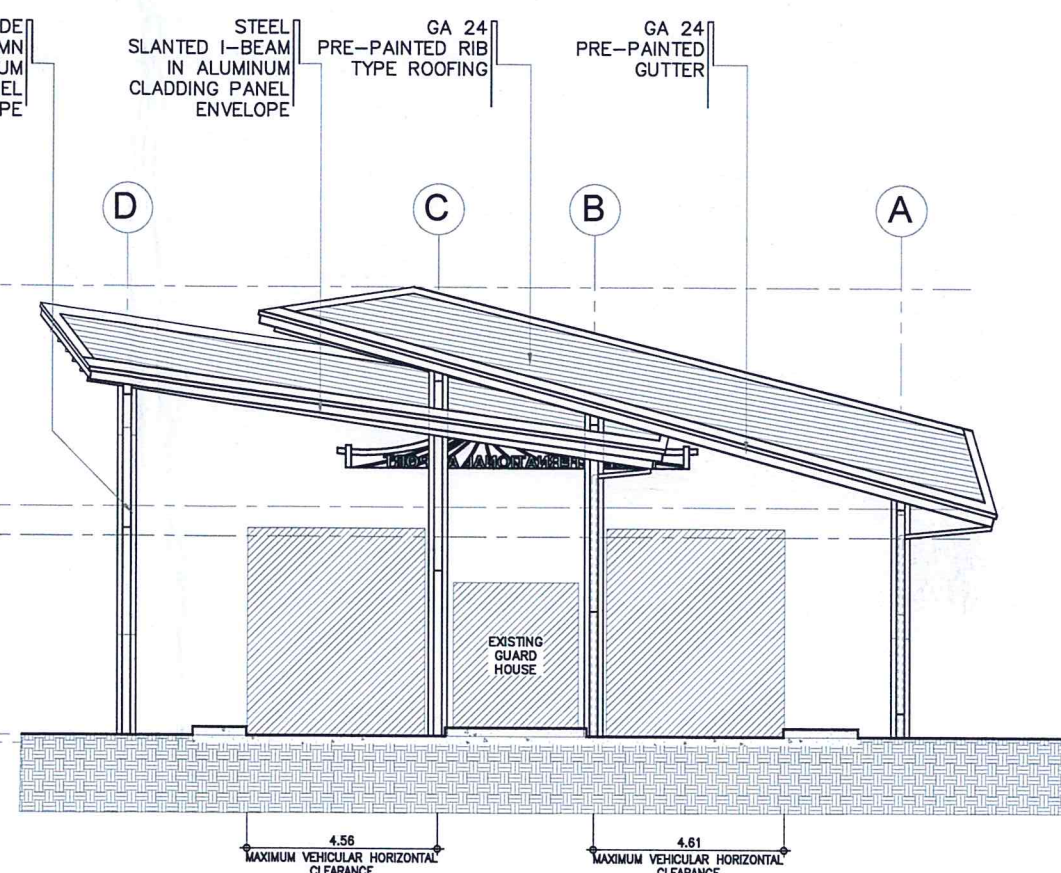
BICOL INTERNATIONAL
AIRPORT
DARAGA, ALBAY

SHEET CONTENTS:
— ELEVATIONS

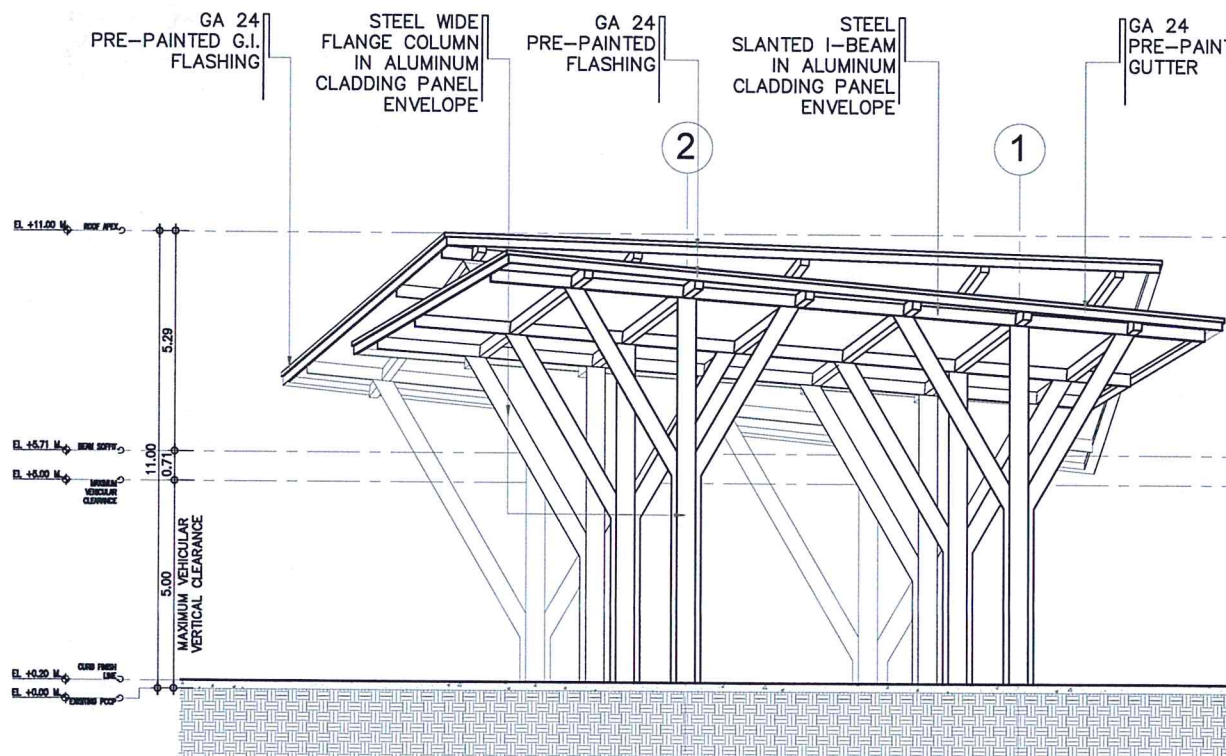
DRAWING SCALE:	SHEET NO:
AS SHOWN	05



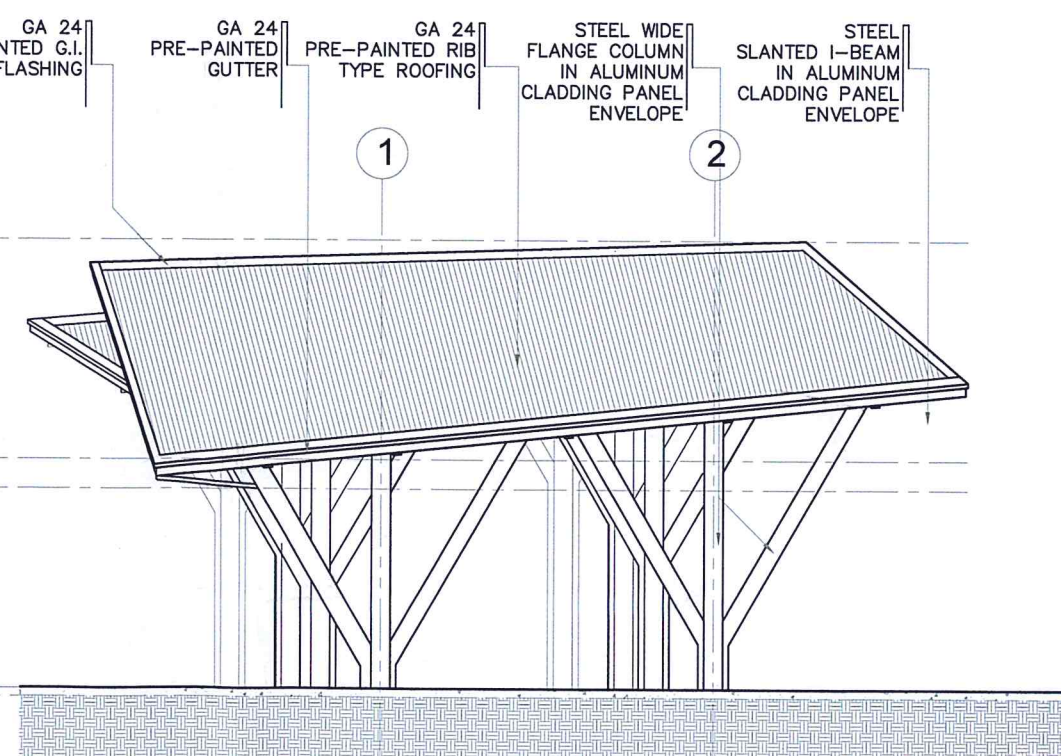
1 FRONT ELEVATION
SCALE: 1 : 100 M



2 REAR ELEVATION
SCALE: 1 : 100 M



3 RIGHT ELEVATION
SCALE: 1 : 100 M



4 LEFT ELEVATION
SCALE: 1 : 100 M



CIVIL AVIATION AUTHORITY OF THE PHILIPPINES
MANILA, PHILIPPINES

THIS DRAWING IS AN EXCLUSIVE PROPERTY
OF CIVIL AVIATION AUTHORITY OF THE
PHILIPPINES AND MUST NOT BE REPRODUCED,
EXHIBITED, LOANED NOR COPIED IN PART OR
IN WHOLE WITHOUT PROPER PERMISSION
AND/OR WRITTEN CONSENT FROM THE CAAP
DIRECTOR GENERAL.

AERODROME DEVELOPMENT
AND MANAGEMENT SERVICE

INFRASTRUCTURE DEVELOPMENT
AND DESIGN DIVISION

DESIGN STAFF: INITIAL / DATE

DESIGNED BY: IDDD

DRAWN BY: JCCS

CHECKED BY: FMN

EPS

REVIEWED BY:

EMERSON P. SALAS
Supervising Aerodrome Engineer, IDDD-ADMS

SUBMITTED BY:

ARNEL F. BORLADO
Department Manager III, AED-ADMS

RECOMMENDED APPROVAL:

LT COL. VALENTINO A. BIONELA PAF (RET)
ADG II, ADMS

APPROVED:

CAPTAIN MANUEL ANTONIO L. TAMAYO
Director General

NOTES / REVISIONS:

PROJECT TITLE:

PROVISION OF COVERED
SHED AT MAIN GATE

LOCATION:

BICOL INTERNATIONAL
AIRPORT
DARAGA, ALBAY

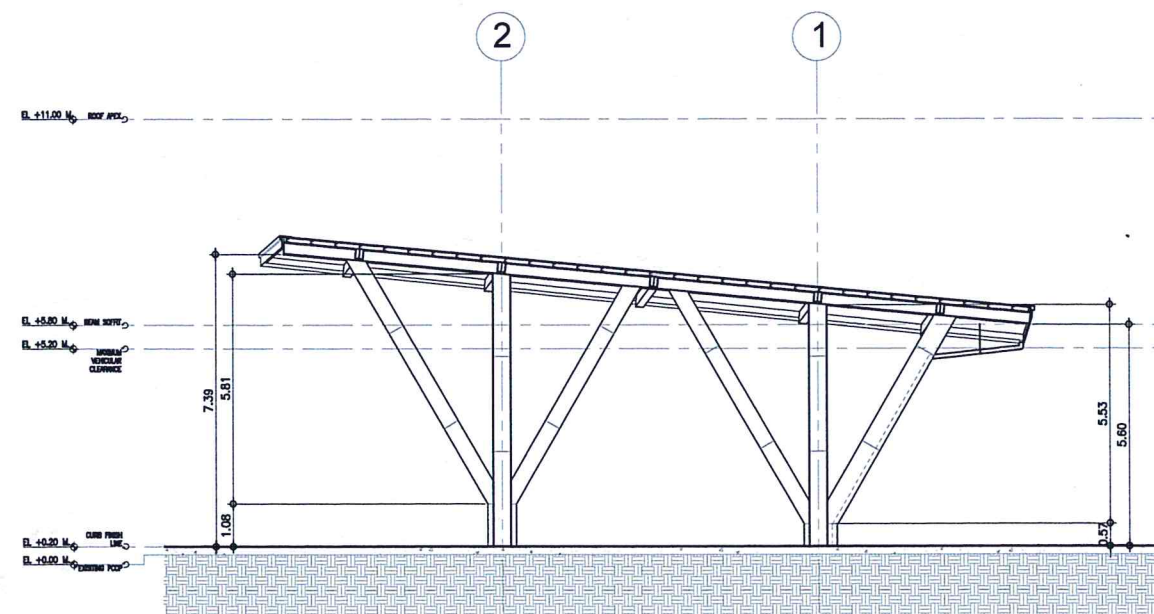
SHEET CONTENTS:

- SECTIONS

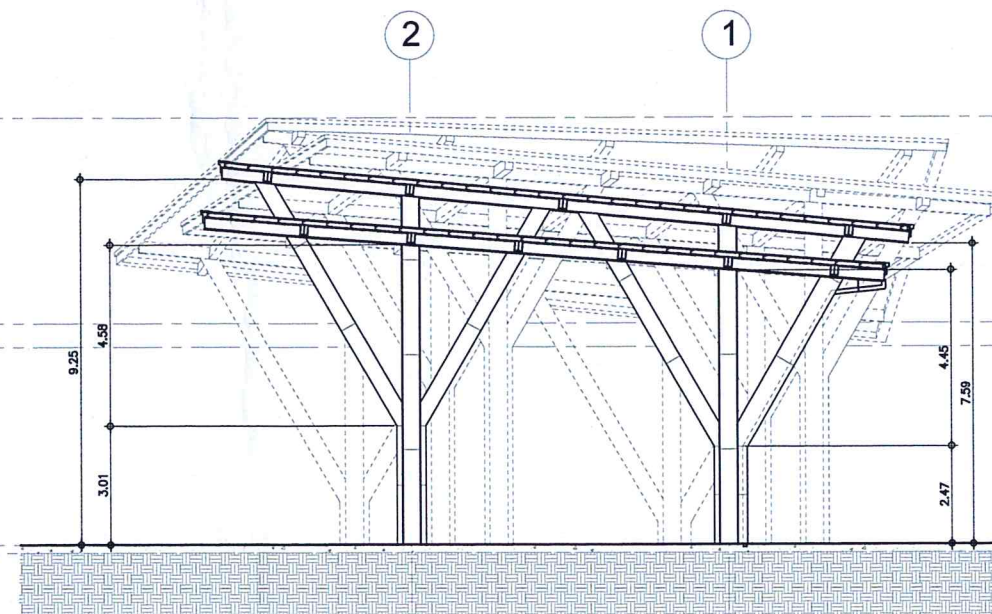
DRAWING SCALE: SHEET NO:

AS SHOWN

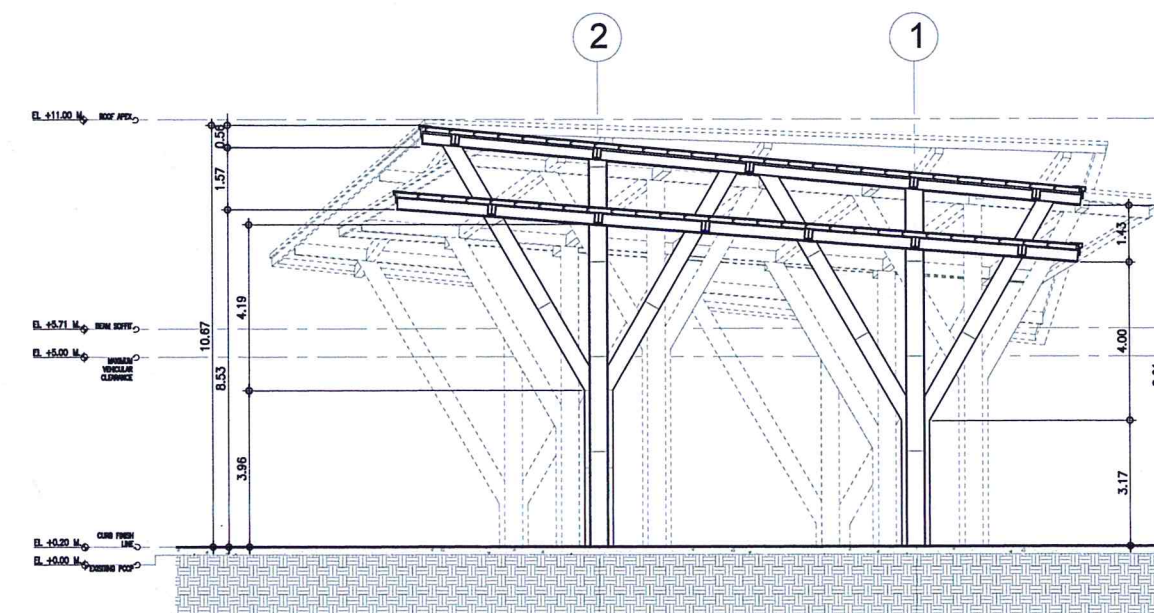
06



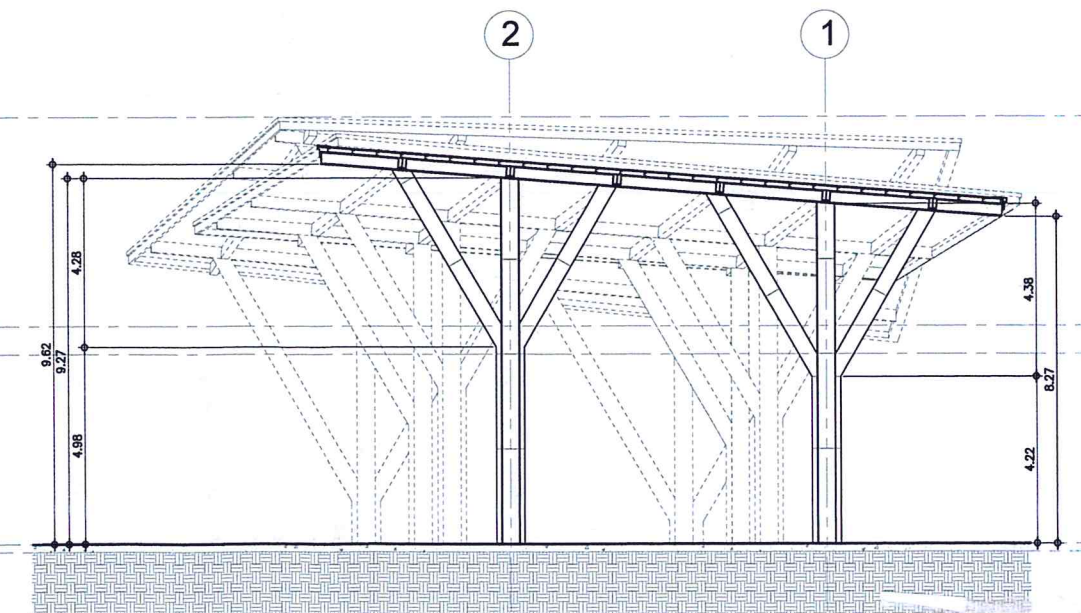
1 SECTION AT A
06 06 SCALE: 1 : 100 M



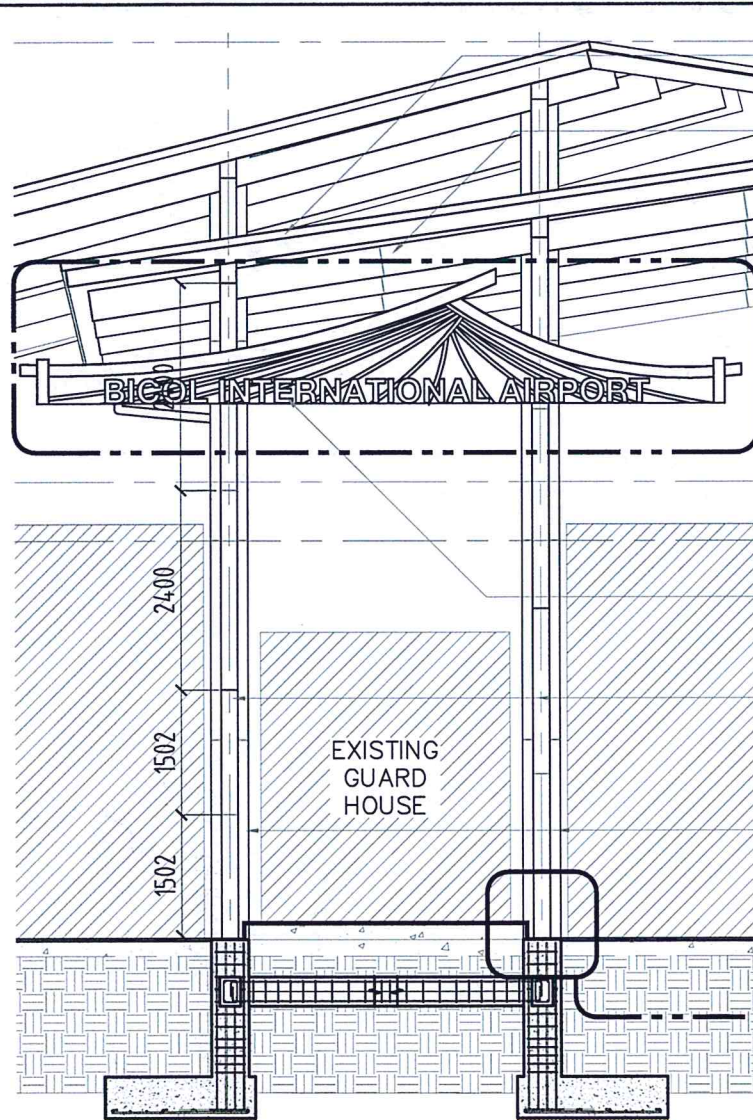
2 SECTION AT B
06 06 SCALE: 1 : 100 M



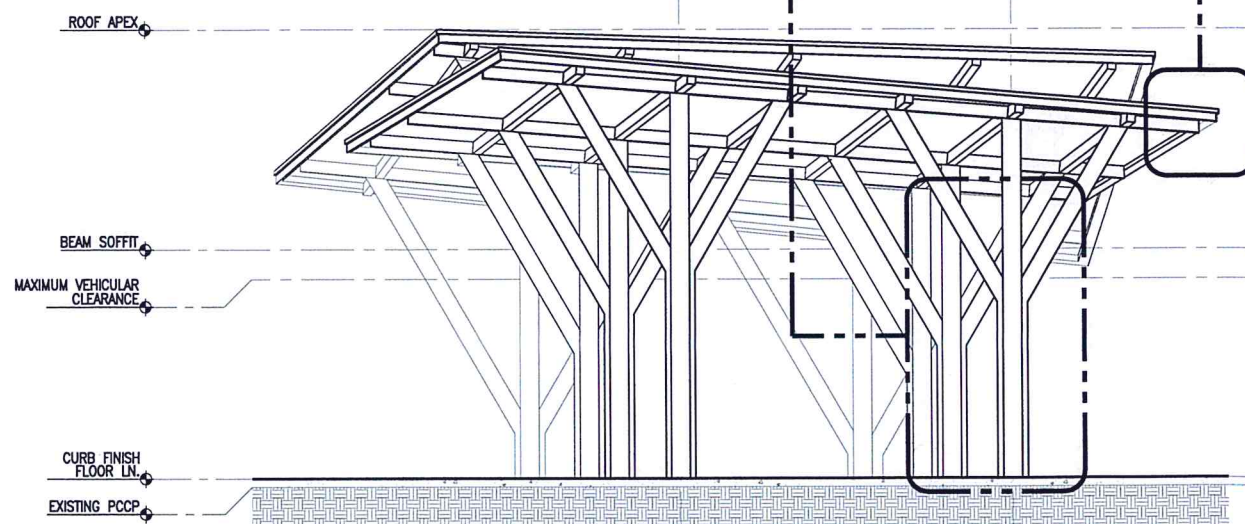
3 SECTION AT C
06 06 SCALE: 1 : 100 M



4 SECTION AT D
06 06 SCALE: 1 : 100 M



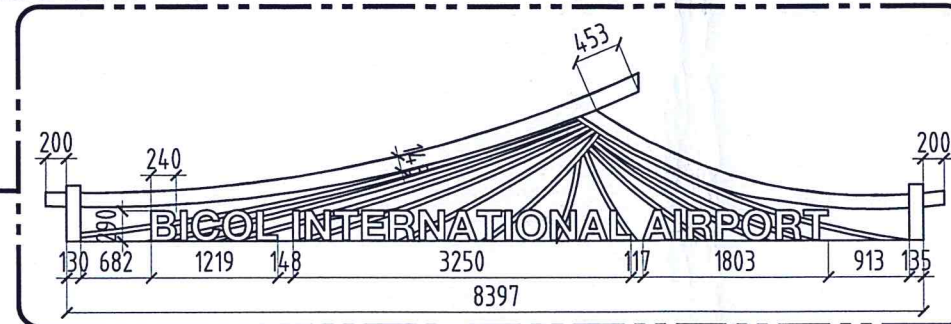
1 FRONT ELEVATION
07 07 DETAILED ELEVATION
SCALE: 1:50 M



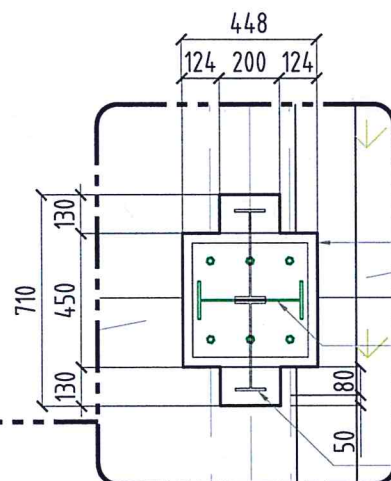
2 RIGHT SIDE ELEVATION
07 07 DETAILED ELEVATION
SCALE: 1:100 M

GA 24
PRE-PAINTED
FLASHING
GIRDERS: W10X12
STEEL WIDE FLANGE IN
ALUMINUM CLADDING
PANEL ENVELOPE

BUILT-UP
STAINLESS STEEL
SIGNAGE
SECONDARY
COLUMN: W12X14
STEEL WIDE FLANGE
IN ALUMINUM
CLADDING PANEL
ENVELOPE
MAIN COLUMN:
W14X22 STEEL WIDE
FLANGE WELDED IN
ALUMINUM CLADDING
PANEL ENVELOPE



BUILT UP SIGNAGE
SPOT DETAIL



SPOT DETAIL

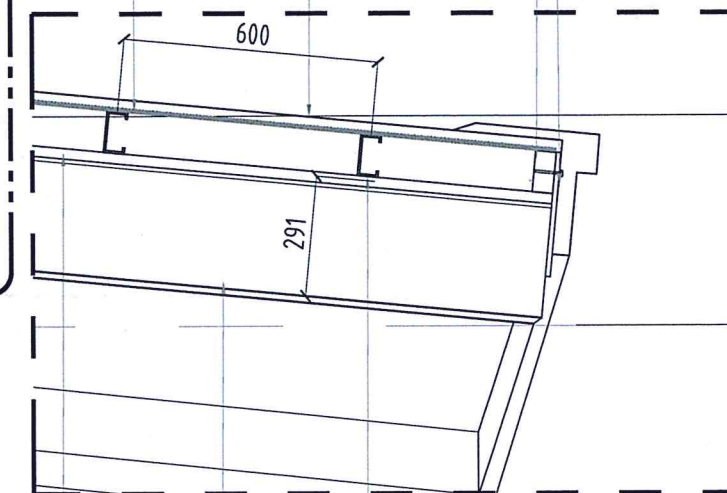
ENVELOPE:
ALUMINUM
CLADDING
PANEL
MAIN COLUMN:
W14X22 STEEL WIDE
FLANGE WELDED TO
BASE PLATE (SEE
STRUCTURAL DETAIL)
SECONDARY
COLUMN:
W12X14 STEEL
WIDE FLANGE

FOIL FACED
SINGLE-LAYER BUBBLE
WRAP INSULATION ON
GA24 CYCLONE WIRE
MESH

GA 24
PRE-PAINTED
RIB TYPE
ROOFING

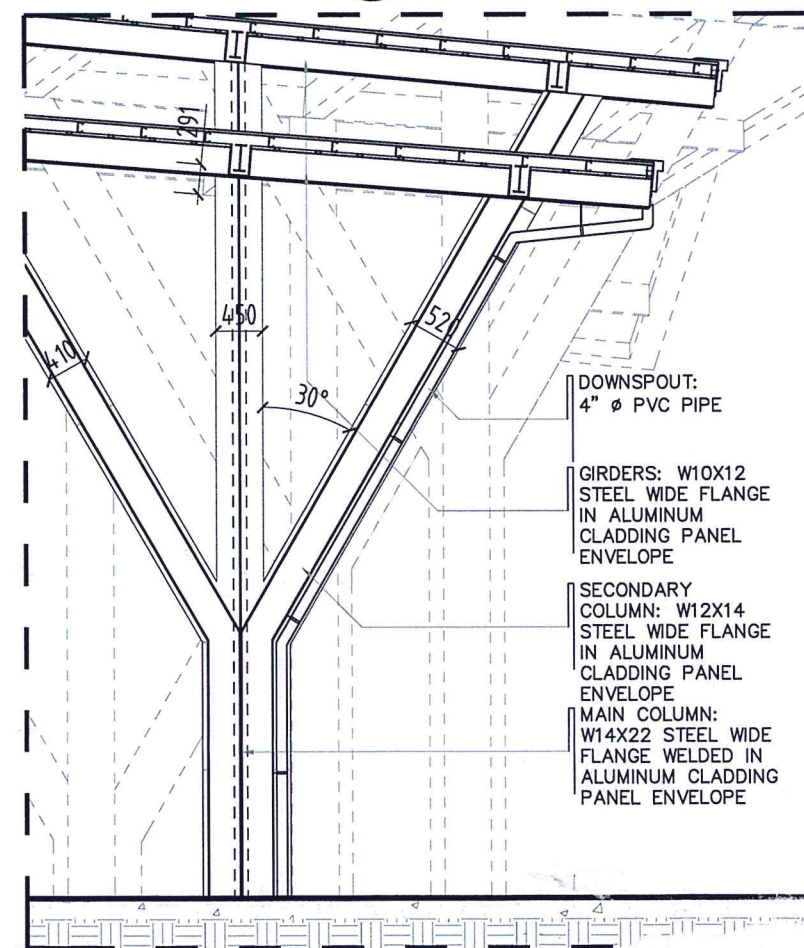
50mm x 150mm
x 6mm THK.
STEEL TUBULAR
FRAME

GA 24
PRE-PAINTED
FLASHING ON
12" X 12mm
THK. FASCIA
BOARD



9mm THK.
FIBER
CEMENT
BOARD
CEILING
W10X12
STEEL
I-BEAM IN
ACP
ENVELOPE
50mm x 100mm x
6mm THK.
C-PURLINS SPACED
600mm O.C.

3 DETAIL 'A'
07 07 SCALE: 1:10 M



4 DETAIL 'B'
07 07 SCALE: 1:25 M

DOWNSPOUT:
4" Ø PVC PIPE

GIRDERS: W10X12
STEEL WIDE FLANGE
IN ALUMINUM
CLADDING PANEL
ENVELOPE

SECONDARY
COLUMN: W12X14
STEEL WIDE FLANGE
IN ALUMINUM
CLADDING PANEL
ENVELOPE

MAIN COLUMN:
W14X22 STEEL WIDE
FLANGE WELDED IN
ALUMINUM CLADDING
PANEL ENVELOPE



CIVIL AVIATION AUTHORITY OF THE PHILIPPINES

THIS DRAWING IS AN EXCLUSIVE PROPERTY
OF CIVIL AVIATION AUTHORITY OF THE
PHILIPPINES AND MUST NOT BE REPRODUCED,
EXHIBITED, LOANED NOR COPIED IN PART OR
IN WHOLE WITHOUT PROPER PERMISSION
AND/OR WRITTEN CONSENT FROM THE CAAP
DIRECTOR GENERAL.

AERODROME DEVELOPMENT
AND MANAGEMENT SERVICE

INFRASTRUCTURE DEVELOPMENT
AND DESIGN DIVISION

DESIGN STAFF: INITIAL / DATE
DESIGNED BY: IDDD
DRAWN BY: JCCS
CHECKED BY: FMN
EPS

REVIEWED BY:
EMERSON P. SALAS
Supervising Aerodrome Engineer, IDDD-ADMS

SUBMITTED BY:
ARNEL F. BORRADO
Department Manager II, AED-ADMS

RECOMMENDED APPROVAL:
LT COL VALENTINO A DIONELA PAF (RET)
ADG II, ADMS

APPROVED:
CAPTAIN MANUEL ANTONIO L. TAMAYO
Director General

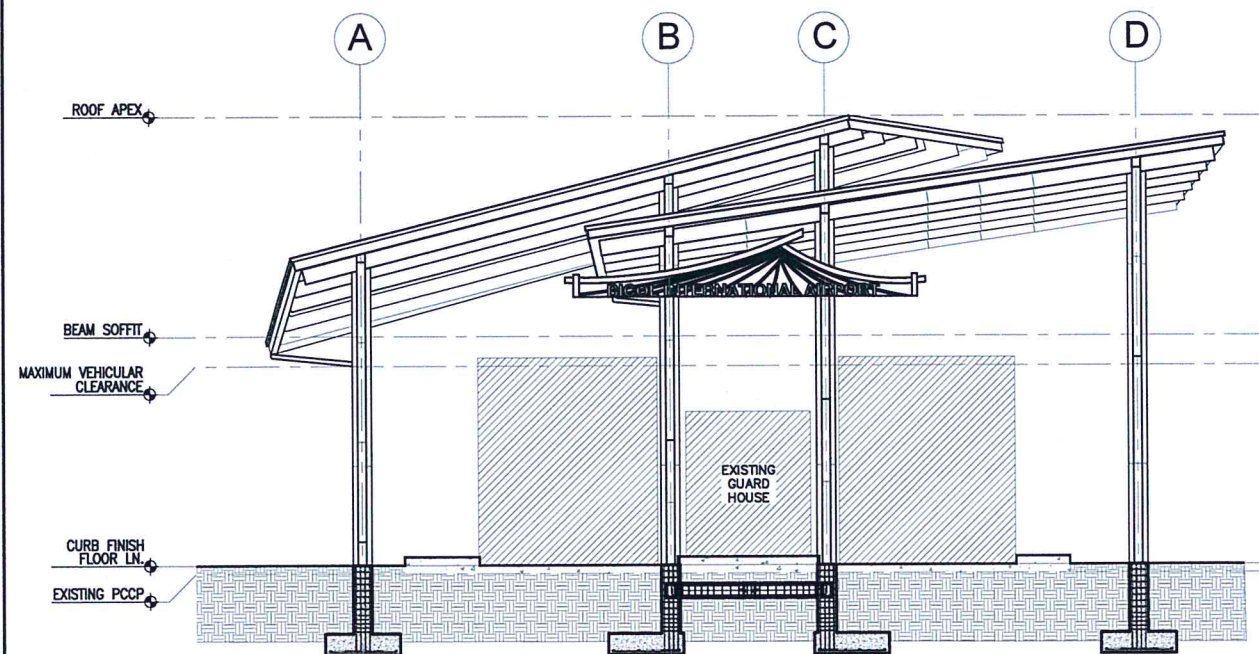
NOTES / REVISIONS:

PROJECT TITLE:
PROVISION OF COVERED
SHED AT MAIN GATE

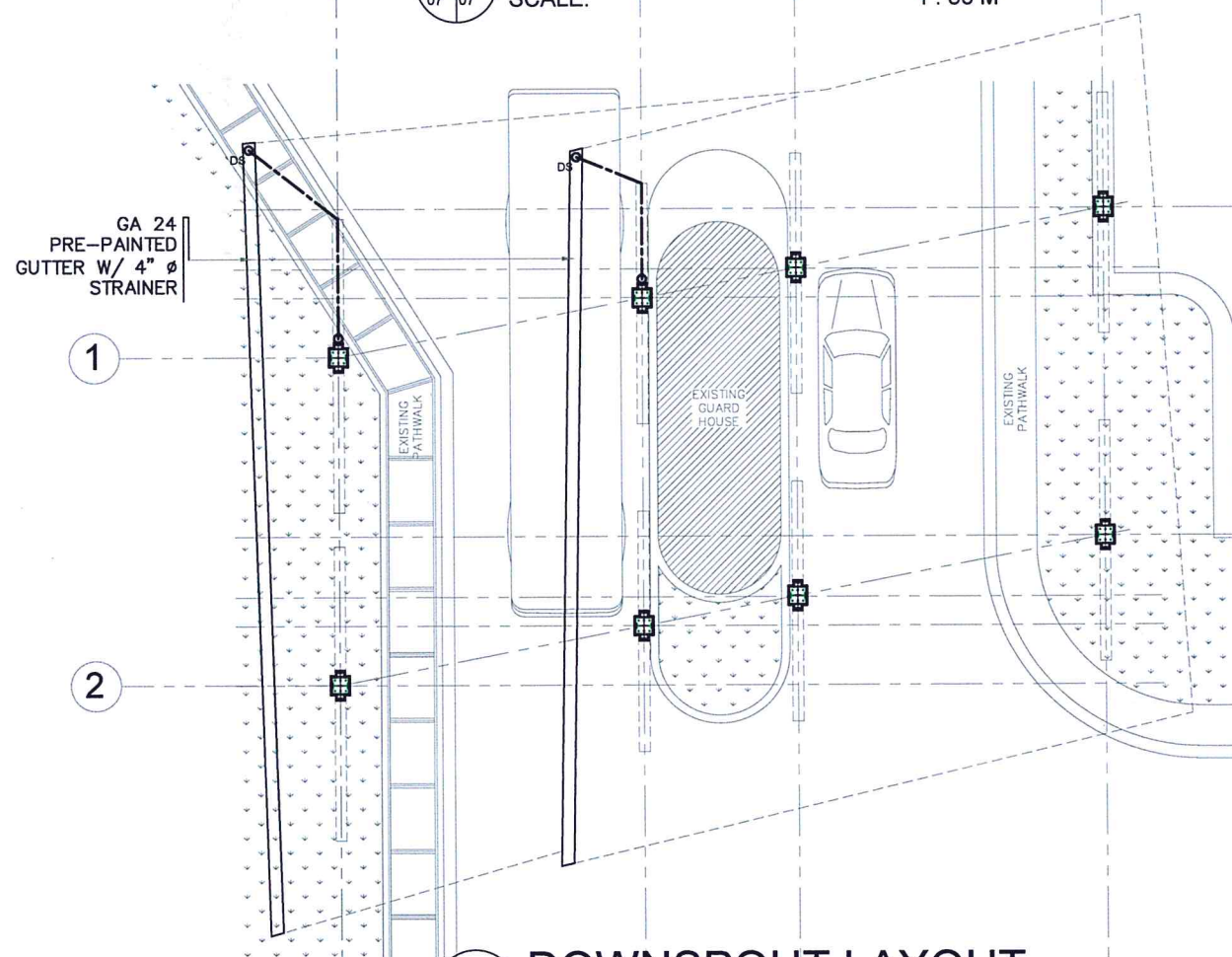
LOCATION:
BICOL INTERNATIONAL
AIRPORT
DARAGA, ALBAY

SHEET CONTENTS:
- DETAILS

DRAWING SCALE: SHEET NO.
AS SHOWN 07

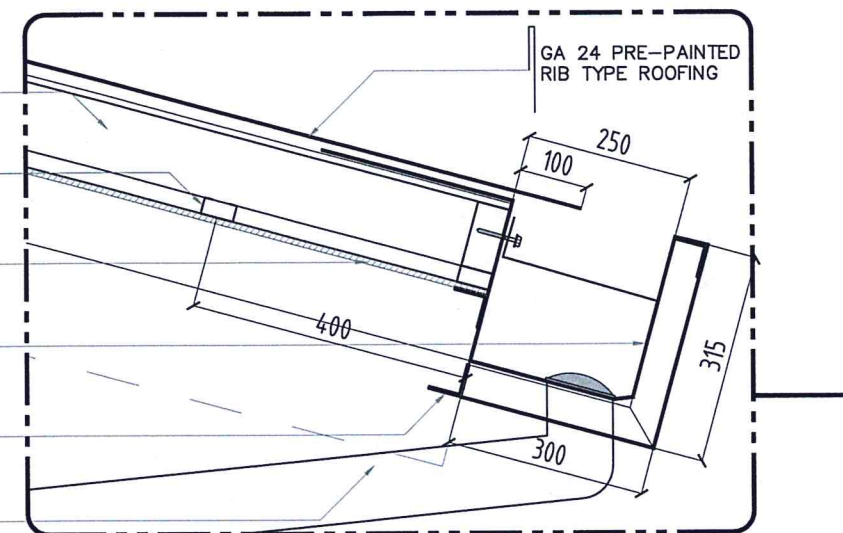


1
07 07
**FRONT ELEVATION
DETAILED ELEVATION**
SCALE: 1 : 50 M

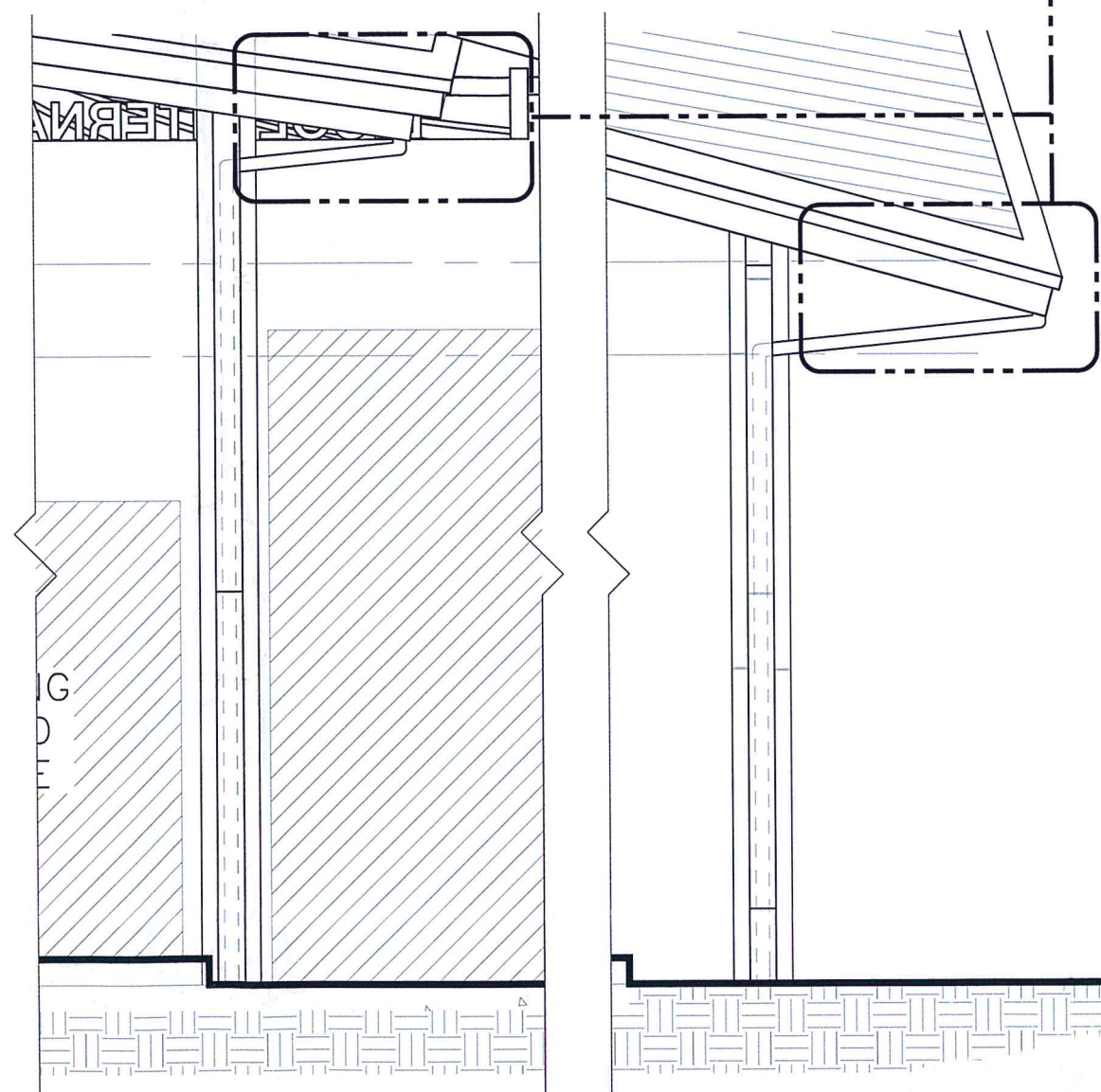


2
08 08
DOWNSPOUT LAYOUT
SCALE: 1 : 100 M

50mm x 100mm x 6mm THK. C-PURLINS SPACED 600mm O.C.
50mm x 25mm METAL FURRING CEILING SUPPORT SPACED @ 400mm O.C. BOTHWAYS
9mm THK. FIBER CEMENT BOARD CEILING
GA 24 PRE-PAINTED GUTTER W/ 4" Ø STRAINER
50mm x 50mm x 3mm THK. ANGLE BAR SUPPORT (SEE STRUCTURAL DETAILS)
DOWNSPOUT: 4" Ø PVC PIPE



SPOT DETAIL
SCALE 1:10M



3
08 08
DOWNSPOUT DETAIL
SCALE: 1 : 30 M



CIVIL AVIATION AUTHORITY OF THE PHILIPPINES
BANGKAY, TELAYAN CITY

THIS DRAWING IS AN EXCLUSIVE PROPERTY OF CIVIL AVIATION AUTHORITY OF THE PHILIPPINES AND MUST NOT BE REPRODUCED, EXHIBITED, LOANED NOR COPIED IN PART OR IN WHOLE WITHOUT PROPER PERMISSION AND/OR WRITTEN CONSENT FROM THE CAAP DIRECTOR GENERAL.

AERODROME DEVELOPMENT
AND MANAGEMENT SERVICE

INFRASTRUCTURE DEVELOPMENT
AND DESIGN DIVISION

DESIGN STAFF:	INITIAL / DATE
DESIGNED BY: IDDD	
DRAWN BY: JCCS	
CHECKED BY: FMN	
EPS	

REVIEWED BY:

EMERSON P. SALAS
Supervising Aerodrome Engineer, IDDD-ADMS

SUBMITTED BY:

ARNEL F. BORLASO
Department Manager III, AED-ADMS

RECOMMENDED APPROVAL:

LT COL VALENTINO A. DIONELA PAF (RET)
ADG II, ADMS

APPROVED:

CAPTAIN MANUEL ANTONIO L. TAMAYO
Director General

NOTES / REVISIONS:

PROJECT TITLE:

PROVISION OF COVERED
SHED AT MAIN GATE

LOCATION:

BICOL INTERNATIONAL
AIRPORT
DARAGA, ALBAY

SHEET CONTENTS:
- DETAILS

DRAWING SCALE:	SHEET NO:
AS SHOWN	08

ON NOTES:

1. ALL TYPICAL DETAILS APPLY TO ALL UNLESS OTHERWISE SPECIFIED. MODIFY TYPICAL DETAILS AS DIRECTED TO MEET PROJECT REQUIREMENTS.

2. SECTION AND PLACING DIAGRAMS OF ALL STRUCTURAL ELEMENTS, PRE-CAST CONCRETE ETC. SHALL BE SUBMITTED FOR ENGINEER'S APPROVAL BEFORE FABRICATION.

3. CONTRACTOR SHALL VERIFY ALL DIMENSIONS BEFORE ALL WORK IS TO BEGIN. CHECK WITH MECHANICAL AND ELECTRICAL CONTRACTORS FOR CONDUITS, PIPE SLEEVES, ETC. TO BE EMBEDDED IN CONCRETE.

4. IT SHALL BE THE CONTRACTOR'S RESPONSIBILITY TO PROVIDE ADEQUATE SHORINGS AND BRACING OF THE STRUCTURE FOR ALL LOADS THAT MAY BE IMPOSED DURING CONSTRUCTION.

B. CONCRETE AND REINFORCEMENT

1. ALL MATERIALS WORKMANSHIP SHALL CONFORM WITH THE LATEST BUILDING CODE OF AMERICAN CONCRETE INSTITUTE (ACI-318).

2. ALL CONCRETE SHALL DEVELOP A MINIMUM COMPRESSIVE STRENGTH AT THE END OF TWENTY EIGHT (28) DAYS WITH CORRESPONDING MAXIMUM SIZE AGGREGATE AND SLUMPS AS FOLLOWS

LOCATION	28 DAYS STRENGTH	MAX. SIZE AGGREGATE	MAX. SLUMP
FOUNDATION, PEDESTAL COLUMN, & FOOTING TIE-BEAMS	3500 PSI	3/4 in. (19 mm)	4 in. (100 mm)
SLAB ON GRADE	3500 PSI	1 in. (25 mm)	5 in. (100 mm)
ALL OTHER STRUCTURES	3000 PSI	3/4 in. (19 mm)	5 in. (125 mm)

3. REINFORCING BARS SHALL CONFORM TO ASTM A615 GRADE 40 FOR #12 & SMALLER REINFORCING BARS SHALL CONFORM TO ASTM A615 GRADE 60 FOR #16 & BIGGER

4. IN GENERAL, THE LATEST EDITION OF ACI-315, MANUAL OF STANDARD PRACTICE DETAILING REINFORCED CONCRETE STRUCTURES SHALL BE ADHERED TO UNLESS OTHERWISE SHOWN OR NOTED.

5. MAINTAIN MINIMUM CONCRETE COVER FOR REINFORCING STEEL AS FOLLOWS.

- SUSPENDED SLABS	3/4 in. (19mm)
- SLAB ON GRADE	1 1/2 in. (38mm)
- WALLS ABOVE GRADE	1 in. (25mm)
- BEAM STIRRUPS AND COLUMN TIES	1 1/2 in. (38mm)
- WHERE CONCRETE IS EXPOSED TO EARTH BUT POURED AGAINST FORMS	2 in. (50mm)
- WHERE CONCRETE IS DEPOSITED DIRECTLY AGAINST EARTH	3 in. (75mm)

6. SPLICES SHALL BE SECURELY WIRED AND SHALL LAP OR EXTEND IN ACCORDANCE WITH TABLE 1 (TABLE OF LAP SPLICE AND ANCHORAGE LENGTH) UNLESS OTHERWISE SHOWN ON DRAWINGS. SPLICES SHALL BE STAGGERED WHENEVER POSSIBLE.

7. ALL ANCHOR BOLTS, DOWELS, AND OTHER INSERTS, SHALL BE PROPERLY POSITIONED AND SECURED IN PLACE PRIOR TO PLACING OF CONCRETE.

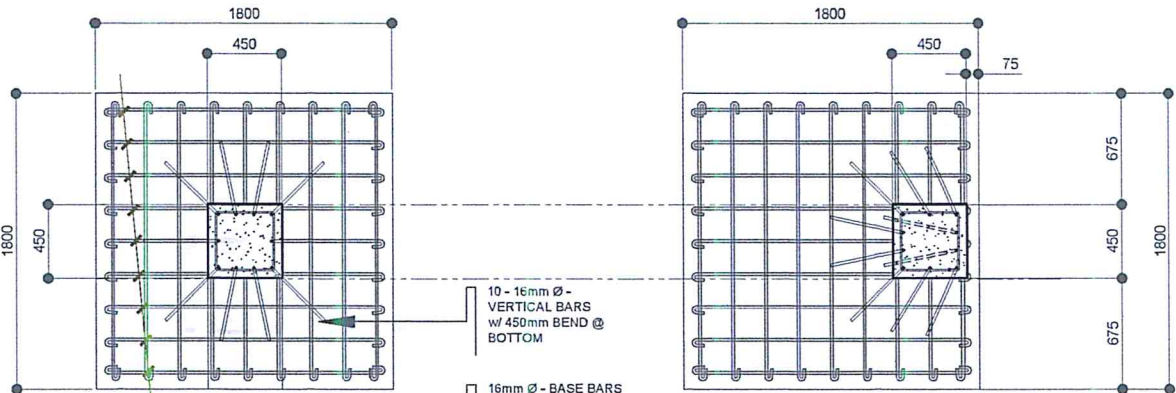
8. CONTRACTOR SHALL NOTE AND PROVIDE ALL MISCELLANEOUS CURBS, SILLS, TOOLS, EQUIPMENTS AND MECHANICAL BASES THAT ARE REQUIRED BY THE ARCHITECTURAL, ELECTRICAL AND MECHANICAL DRAWINGS.

9. ALL CONCRETE SHALL BE KEPT MOIST FOR A MINIMUM OF SEVEN (7) CONSECUTIVE DAYS IMMEDIATELY AFTER POURING BY THE USE OF WET BURLAP, FOG SPRAYING, CURING COMPOUNDS OR OTHER APPROVED METHODS.

10. STRIPPING OF FORMS AND SHORES REFER TO TECHNICAL SPECIFICATIONS

D. STEEL NOTES:

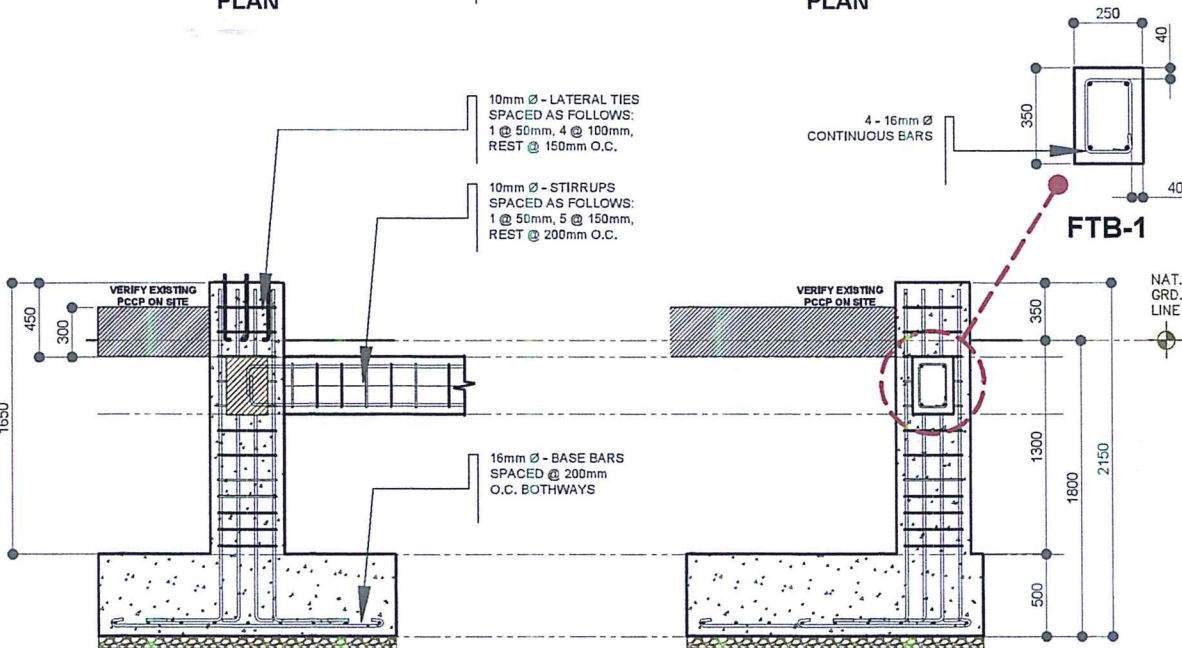
1. ALL STRUCTURAL STEEL SHAPES SHALL CONFORM TO STD. REQUIREMENTS OF AISI FOR ASTM A36 STEEL
2. ALL COLD FORMED STEEL SHAPES SHALL CONFORM TO STD. REQUIREMENTS OF AISI FOR JIS G3444 SPPC/ ASTM A36
3. ALL WELDS SHALL CONFORM WITH AWS STD.
4. CONNECTORS ANCHOR BOLTS ASTM A325 AS SPECIFIED WELDS E70XX ELECTRODE



PLAN

PLAN

FTB-1



SECTION

SECTION

PROVISION OF COVERED SHED AT MAIN GATE

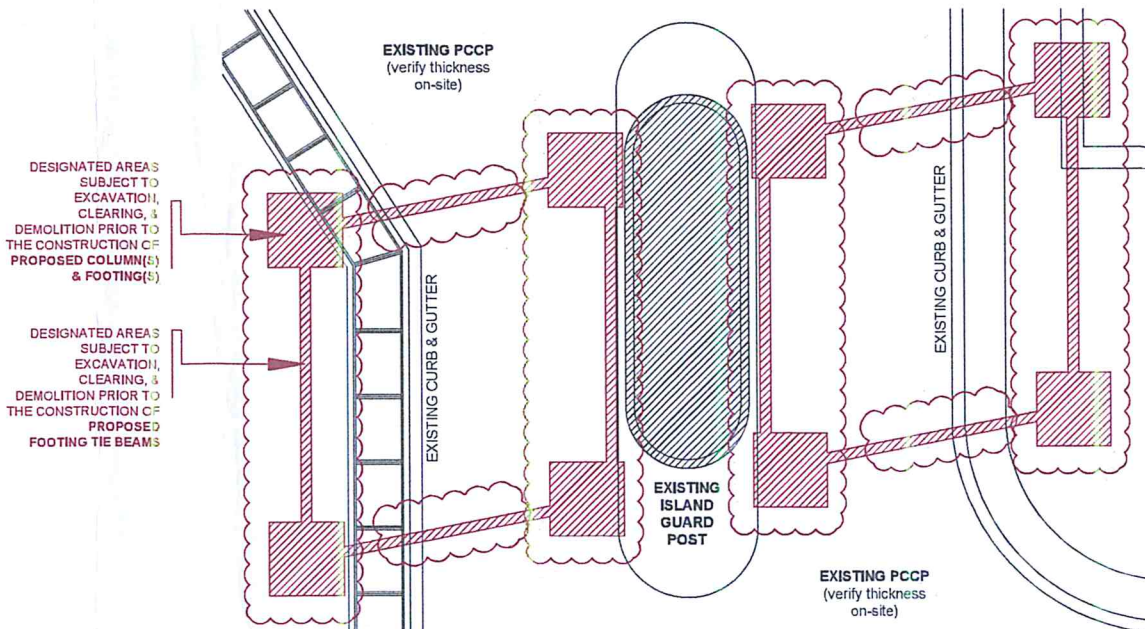
DETAIL OF C1-F1

SCALE: 1:25 MTS.

PROVISION OF COVERED SHED AT MAIN GATE

DETAIL OF C1-F2

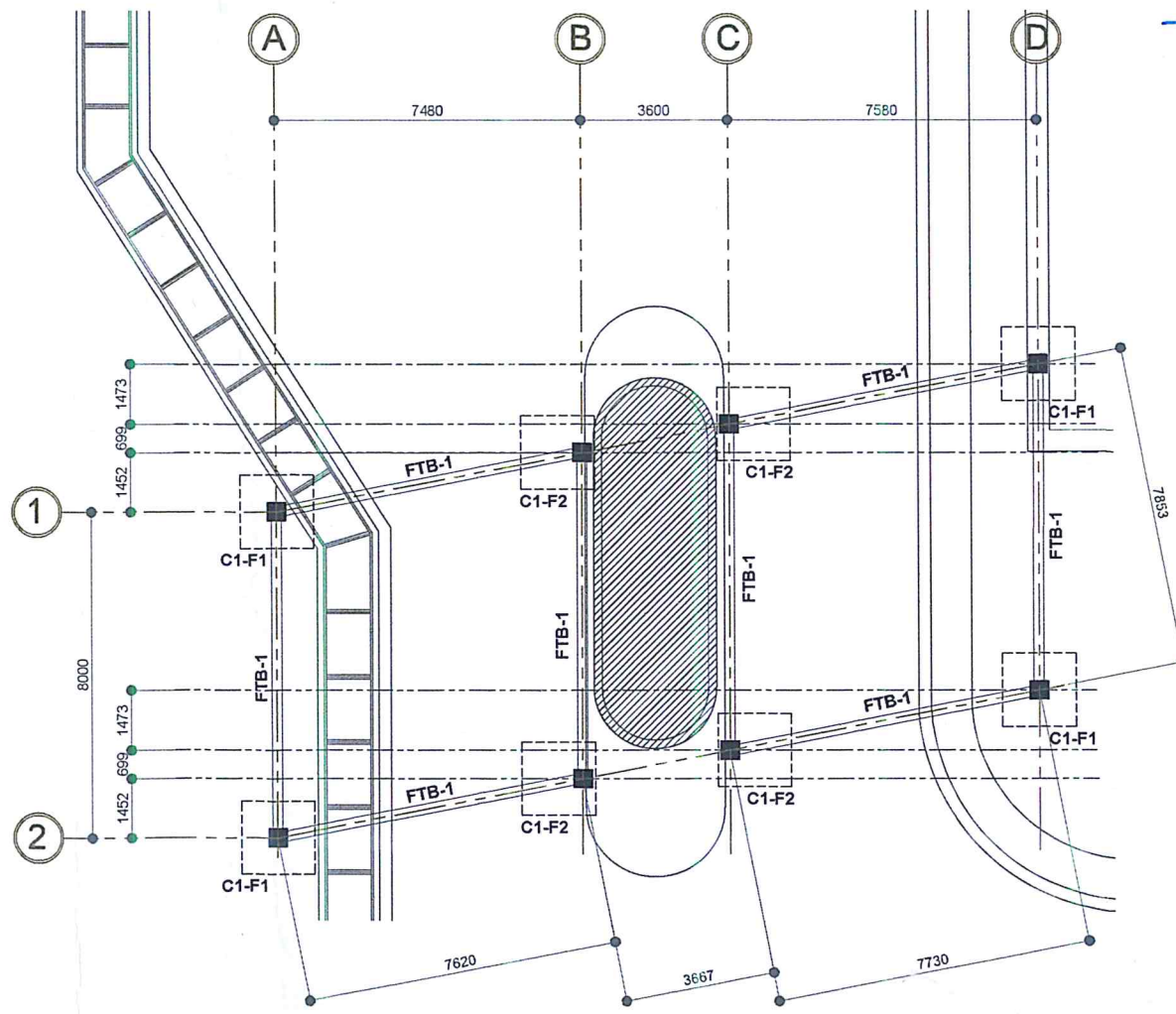
SCALE: 1:25 MTS.



PROVISION OF COVERED SHED AT MAIN GATE

DEMOLITION PLAN

SCALE: 1:100 MTS.



PROVISION OF COVERED SHED AT MAIN GATE

FOUNDATION PLAN

SCALE: 1:100 MTS.



CIVIL AVIATION AUTHORITY OF THE PHILIPPINES

THIS DRAWING IS AN EXCLUSIVE PROPERTY OF CIVIL AVIATION AUTHORITY OF THE PHILIPPINES AND MUST NOT BE REPRODUCED, EXHIBITED, LOANED NOR COPIED IN PART OR IN WHOLE WITHOUT PROPER PERMISSION AND/OR WRITTEN CONSENT FROM THE CAAP DIRECTOR GENERAL

AERODROME DEVELOPMENT AND MANAGEMENT SERVICE

INFRASTRUCTURE DEVELOPMENT AND DESIGN DIVISION

DESIGN STAFF: INITIAL / DATE

DESIGNED BY: IDDD

DRAWN BY: JPDR

CHECKED BY:

REVIEWED BY:

EMERSON P. SALAS

Acting Division Chief III, IDDD-ADMS

SUBMITTED BY:

ARNEL F. BORLADO

Department Manager III, AED-ADMS

RECOMMENDED APPROVAL:

LT COL VALENTINO ADIONELA PAF (RET)

ADG II, ADMS

APPROVED:

CAPTAIN MANUEL ANTONIO L. TAMAYO

Chief Engineer

NOTES / REVISIONS:

PROJECT TITLE:

PROVISION OF COVERED SHED AT MAIN GATE

LOCATION:

BICOL INTERNATIONAL AIRPORT
DARAGA, ALBAY

SHEET CONTENTS:

- GENERAL / CONSTRUCTION NOTES
- DEMOLITION PLAN
- FOUNDATION PLAN
- DETAIL OF C1-F1 & C1-F2

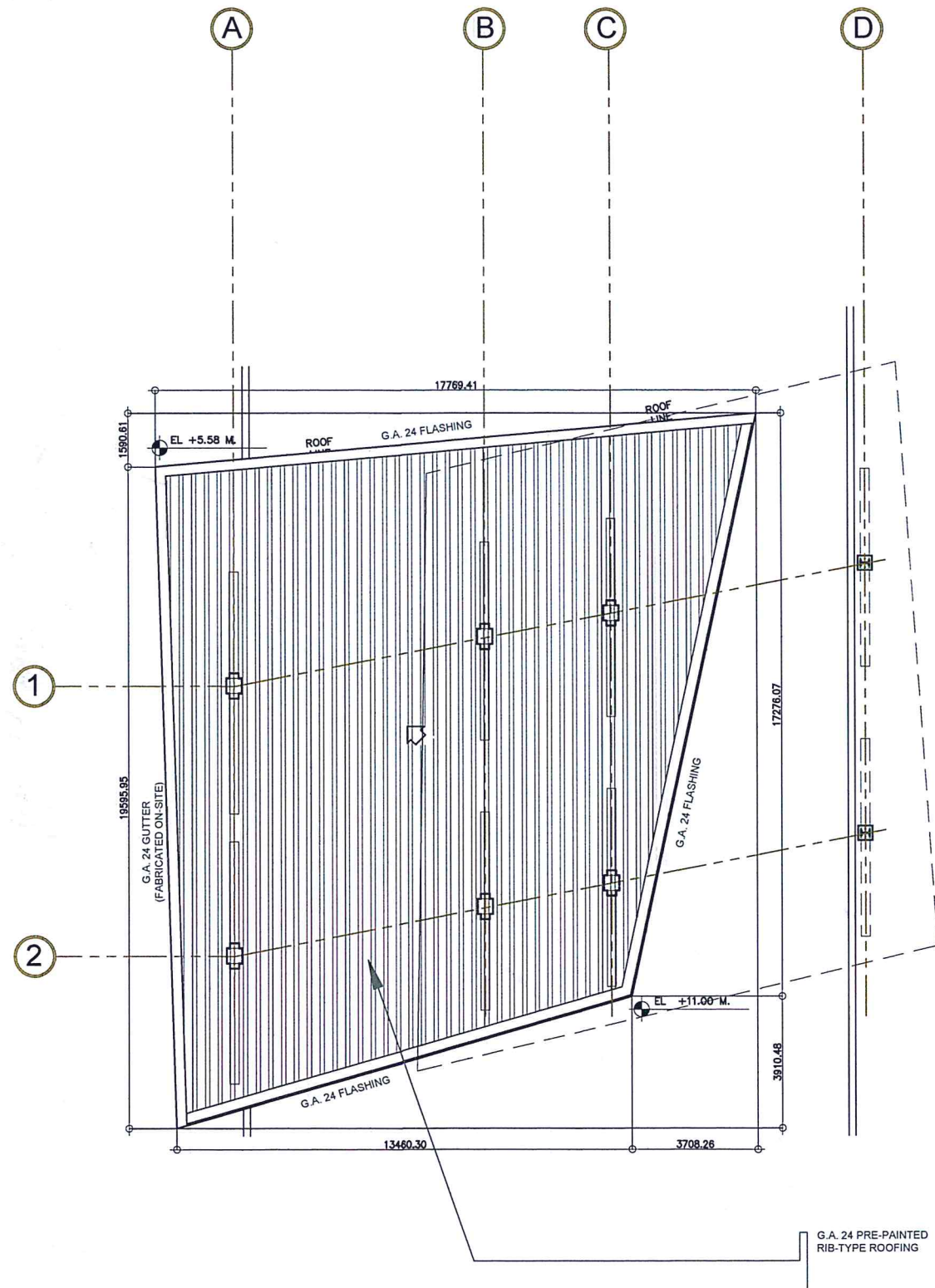
DRAWING SCALE:

AS SHOWN

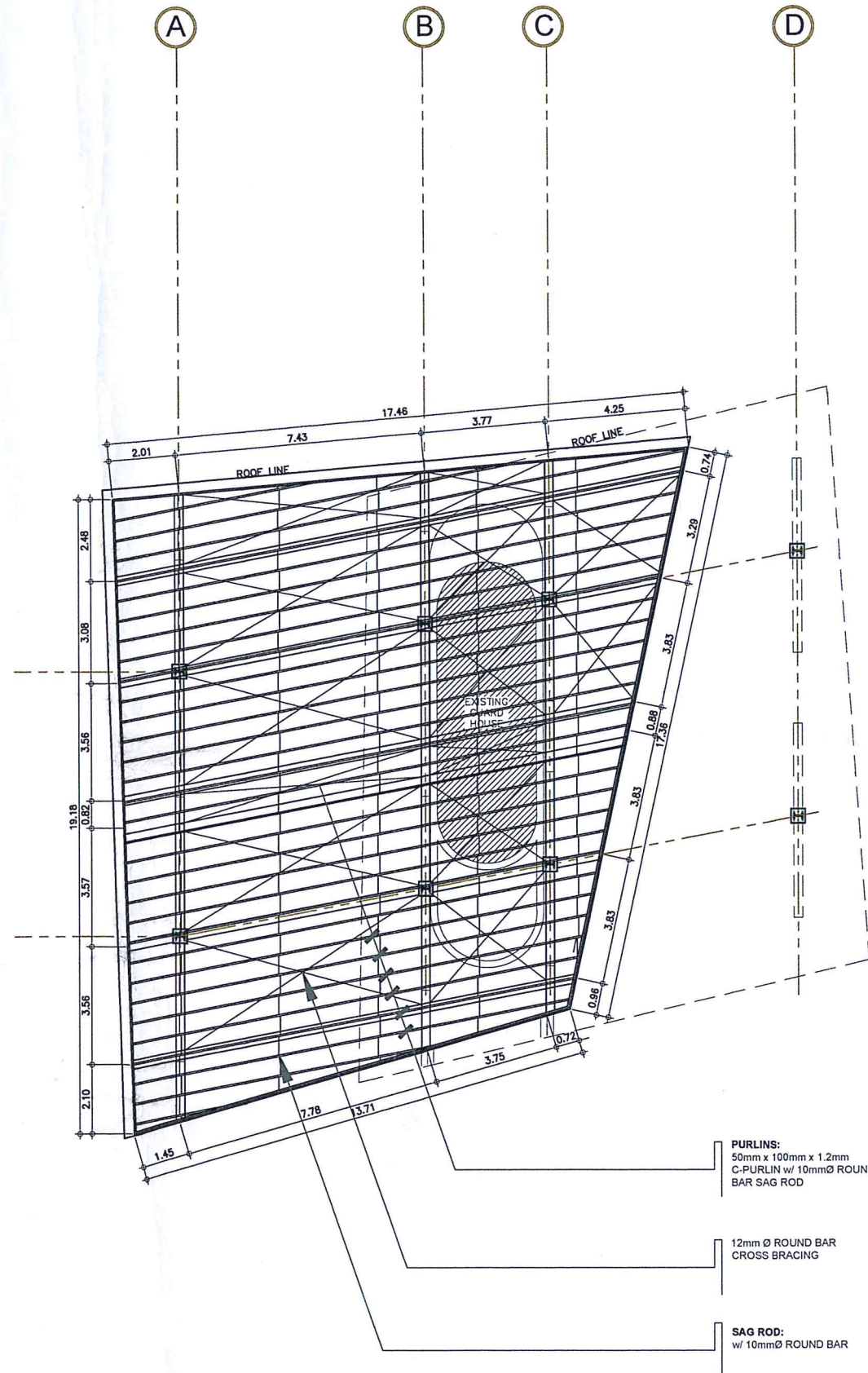
SHEET NO:

S

S - 01



PROVISION OF COVERED SHED AT MAIN GATE
ROOF PLAN (ROOF A)
 SCALE: 1:100 MTS.



PROVISION OF COVERED SHED AT MAIN GATE
ROOF FRAMING PLAN (ROOF A)
 SCALE: 1:100 MTS.



CIVIL AVIATION AUTHORITY OF THE PHILIPPINES
 NATIONAL TEST CENTER

THIS DRAWING IS AN EXCLUSIVE PROPERTY OF CIVIL AVIATION AUTHORITY OF THE PHILIPPINES AND MUST NOT BE REPRODUCED, EXHIBITED, LOANED NOR COPIED IN PART OR IN WHOLE WITHOUT PROPER PERMISSION AND/OR WRITTEN CONSENT FROM THE CAAP DIRECTOR GENERAL.

AERODROME DEVELOPMENT AND MANAGEMENT SERVICE

INFRASTRUCTURE DEVELOPMENT AND DESIGN DIVISION

DESIGN STAFF:	INITIAL / DATE
DESIGNED BY: IDDD	
DRAWN BY: JPDR	
CHECKED BY:	

REVIEWED BY:
 EMERSON P. SALAS
 Acting Division Chief III, IDDD-ADMS

SUBMITTED BY:
 ARNEL F. BORLADO
 Department Manager III, AED-ADMS

RECOMMENDED APPROVAL:
 LT COL VALENTINO A DIONELA PAF (RET)
 ADG II ADMS

APPROVED:
 CAPTAIN MANUEL ANTONIO L. TAMAYO
 Director General

NOTES / REVISIONS:

PROJECT TITLE:

PROVISION OF COVERED SHED AT MAIN GATE

LOCATION:

BICOL INTERNATIONAL AIRPORT
 DARAGA, ALBAY

SHEET CONTENTS:
 - ROOF PLAN (ROOF A)
 - ROOF FRAMING PLAN (ROOF A)

DRAWING SCALE:	SHEET NO:
AS SHOWN	S
	S - 02



CIVIL AVIATION AUTHORITY OF THE PHILIPPINES
1000, 1000, 1000

THIS DRAWING IS AN EXCLUSIVE PROPERTY
OF CIVIL AVIATION AUTHORITY OF THE
PHILIPPINES AND MUST NOT BE REPRODUCED,
EXHIBITED, LOANED NOR COPIED IN PART OR
IN WHOLE WITHOUT PROPER PERMISSION
AND/OR WRITTEN CONSENT FROM THE CAAP
DIRECTOR GENERAL.

AERODROME DEVELOPMENT
AND MANAGEMENT SERVICE

INFRASTRUCTURE DEVELOPMENT
AND DESIGN DIVISION

DESIGN STAFF: INITIAL / DATE

DESIGNED BY: IDDD
DRAWN BY: JPDR
CHECKED BY:

REVIEWED BY:

EMERSON P. SALAS
Acting Division Chief III, IDDD-ADMS

SUBMITTED BY:

ARNEL F. BORLADO
Department Manager III, AED-ADMS

RECOMMENDED APPROVAL:

LT COL VALENTINO A DIONELA PAF (RET)
ADG II ADMS

APPROVED:

CAPTAIN MANUEL ANTONIO TAMAYO
Director General

NOTES / REVISIONS:

PROJECT TITLE:

PROVISION OF COVERED
SHED AT MAIN GATE

LOCATION:

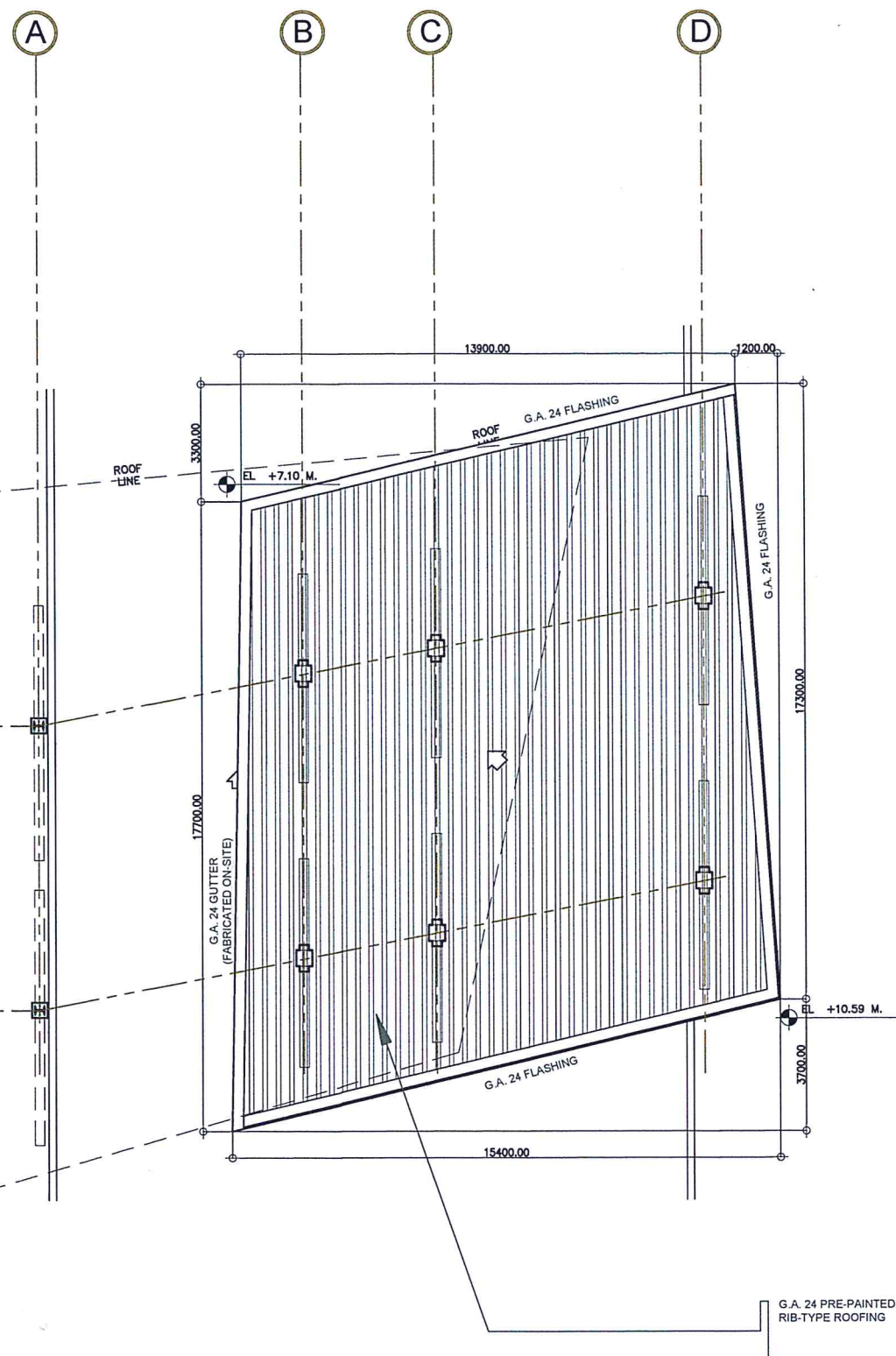
BICOL INTERNATIONAL AIRPORT
DARAGA, ALBAY

SHEET CONTENTS:

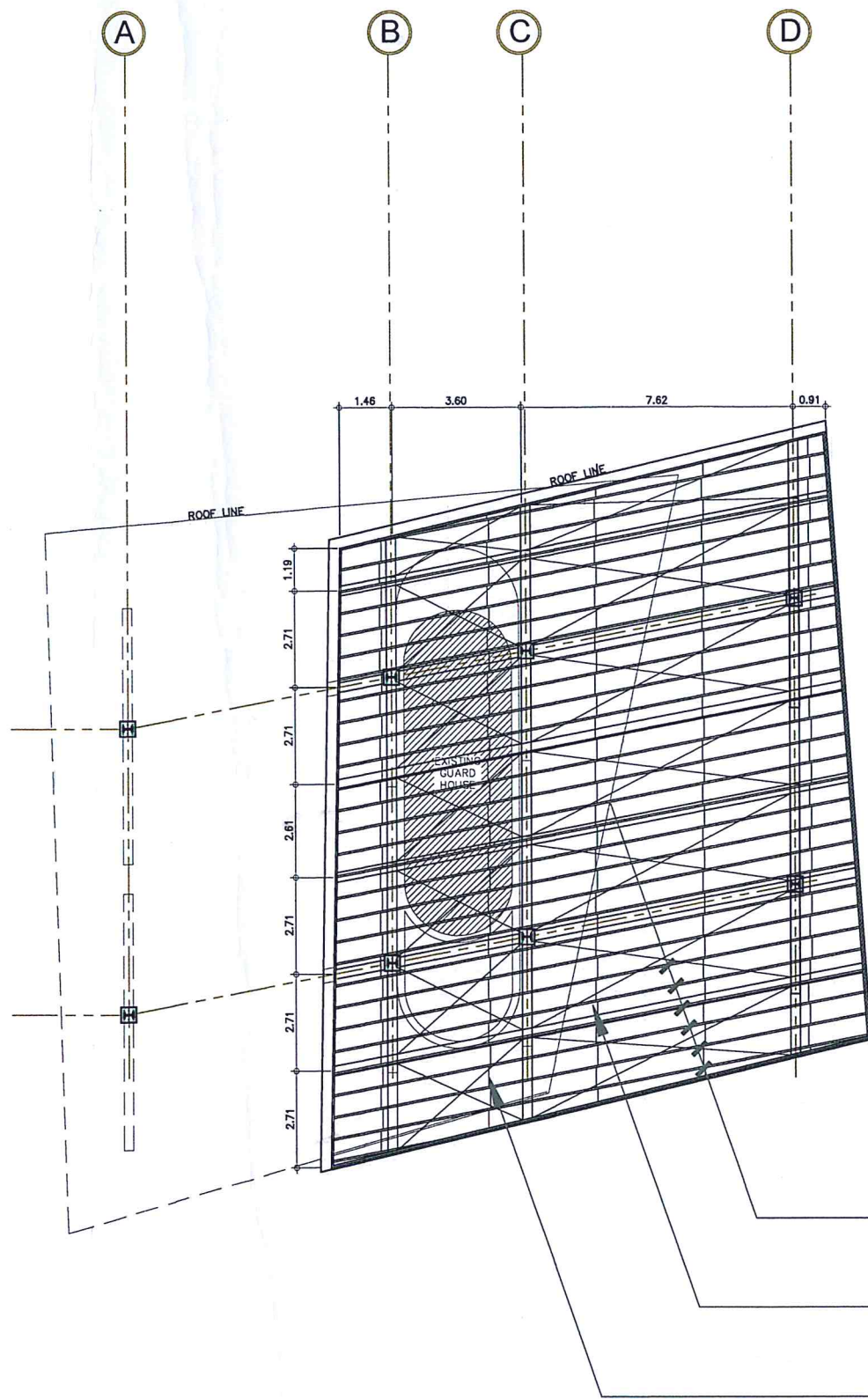
- ROOF PLAN (ROOF B)
- ROOF FRAMING PLAN (ROOF B)

DRAWING SCALE: SHEET NO.

AS SHOWN S
S - 03



PROVISION OF COVERED SHED AT MAIN GATE
ROOF PLAN (ROOF B)
SCALE: 1:100 MTS.



PROVISION OF COVERED SHED AT MAIN GATE
ROOF FRAMING PLAN (ROOF B)
SCALE: 1:100 MTS.

PURLINS:
50mm x 100mm x 1.2mm
C-PURLIN

12mm Ø ROUND BAR
CROSS BRACING w/
TURN BUCKLE

SAG ROD:
w/ 10mmØ ROUND BAR

LEGEND:

- (A) - STEEL COLUMN - W10x22
- (B) - STEEL BEAM - W8x15
- (C) - STEEL SUPPORT @ COLUMN - W8x15

NOTE:

ALL GRIDS (1) & (2) ON EACH ELEVATION DRAWING REPRESENTED IN THIS SHEET ARE ALIGNED IN A DIAGONAL ORIENTATION. REFER TO PLANS FOR PROPER IDENTIFICATION/VERIFICATION OF SUCH GRID LINES.



CIVIL AVIATION AUTHORITY OF THE PHILIPPINES

THIS DRAWING IS AN EXCLUSIVE PROPERTY OF CIVIL AVIATION AUTHORITY OF THE PHILIPPINES AND MUST NOT BE REPRODUCED, EXHIBITED, LOANED NOR COPIED IN PART OR IN WHOLE WITHOUT PROPER PERMISSION AND/OR WRITTEN CONSENT FROM THE CAAP DIRECTOR GENERAL.

AERODROME DEVELOPMENT AND MANAGEMENT SERVICE

INFRASTRUCTURE DEVELOPMENT AND DESIGN DIVISION

DESIGN STAFF:	INITIAL / DATE
DESIGNED BY: IDDD	
DRAWN BY: JPDR	
CHECKED BY:	

REVIEWED BY:
EMERSON P. SALAS
Acting Division Chief III, IDDD-ADMS

SUBMITTED BY:
ARNEL F. BORLADO
Department Manager III, AED-ADMS

RECOMMENDED APPROVAL:
LT COL VALENTINO A. DIONELA PAF (RET)
ADG II, ADMS

APPROVED:
CAPTAIN MAURICIO L. TAMAYO
Colonel General

NOTES / REVISIONS:

PROJECT TITLE:

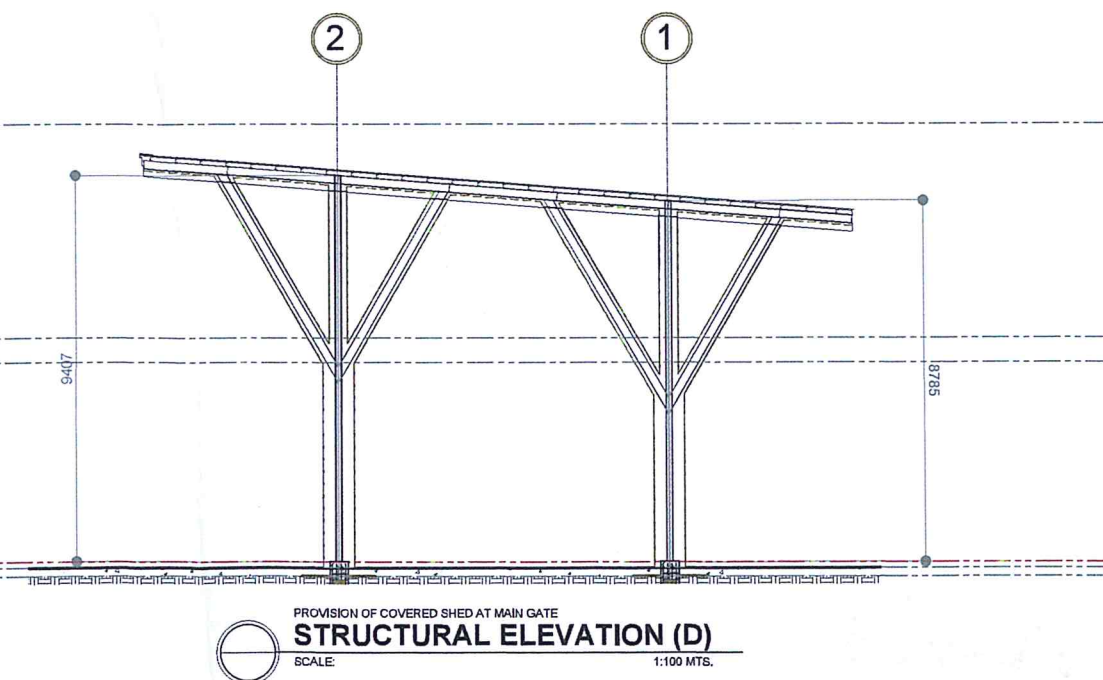
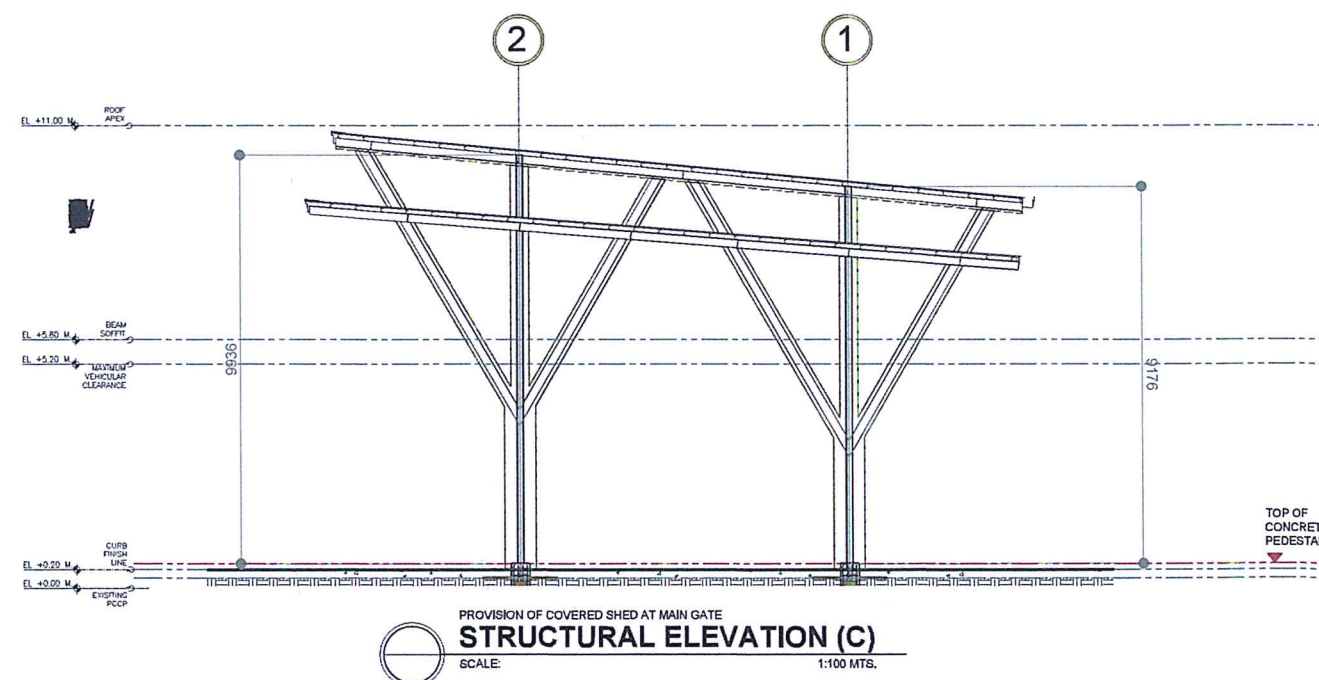
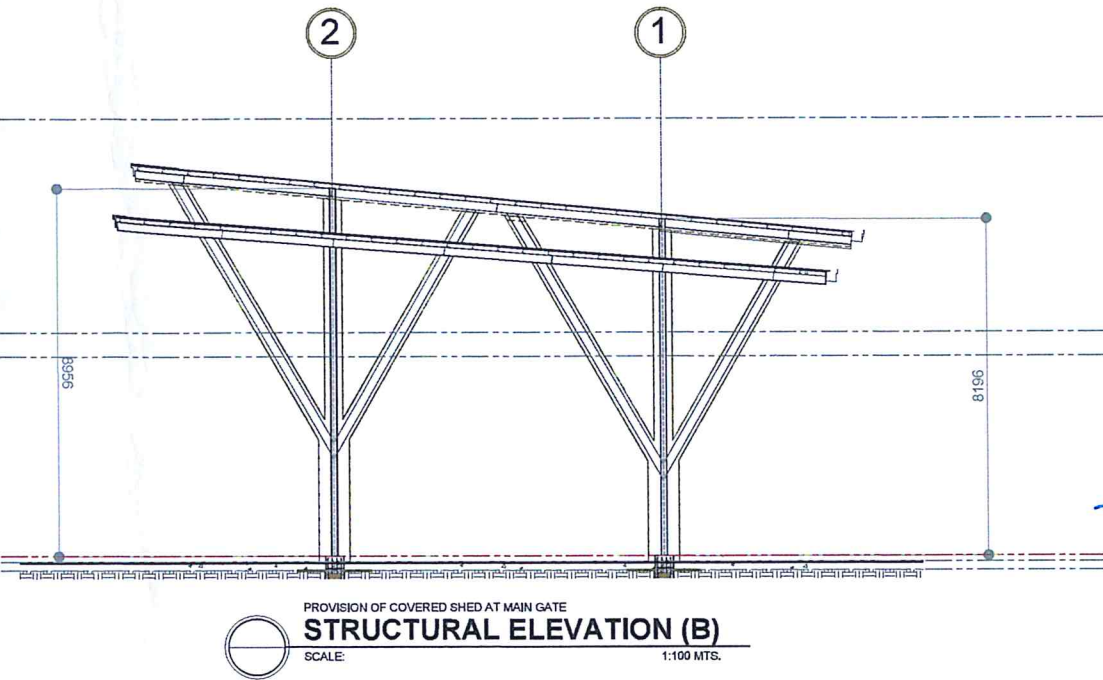
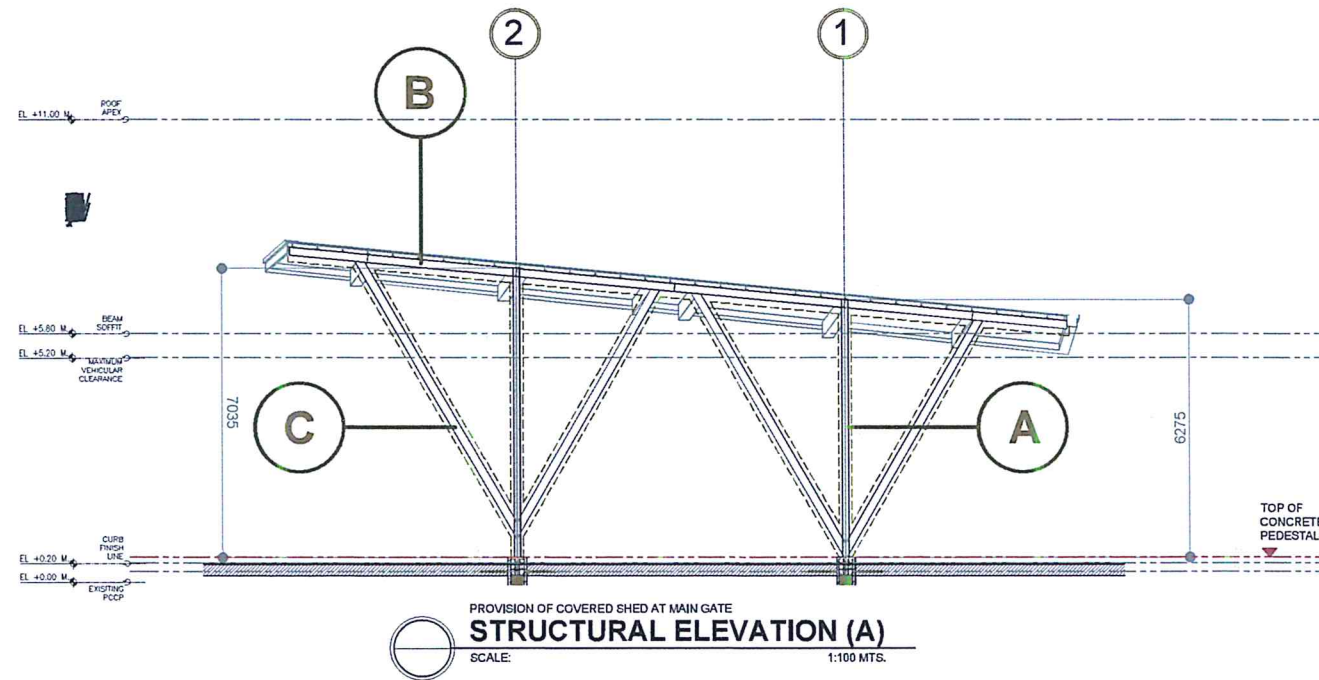
PROVISION OF COVERED SHED AT MAIN GATE

LOCATION:

BICOL INTERNATIONAL AIRPORT
DARAGA, ALBAY

SHEET CONTENTS:
- ELEVATIONS (STRUCTURAL)

DRAWING SCALE:	SHEET NO:
AS SHOWN	S
	S - 04





CIVIL AVIATION AUTHORITY OF THE PHILIPPINES

THIS DRAWING IS AN EXCLUSIVE PROPERTY OF CIVIL AVIATION AUTHORITY OF THE PHILIPPINES AND MUST NOT BE REPRODUCED, EXHIBITED, LOANED NOR COPIED IN PART OR IN WHOLE WITHOUT PROPER PERMISSION AND/OR WRITTEN CONSENT FROM THE CAAP DIRECTOR GENERAL.

AERODROME DEVELOPMENT AND MANAGEMENT SERVICE

INFRASTRUCTURE DEVELOPMENT AND DESIGN DIVISION

DESIGN STAFF:	INITIAL / DATE
DESIGNED BY:	IDDD
DRAWN BY:	JPDR
CHECKED BY:	

REVIEWED BY:

EMERSON P. SALAS
Acting Division Chief III, IDDD-ADMS

SUBMITTED BY:

ARNEL F. BORLADO
Department Manager III, AED-ADMS

RECOMMENDED APPROVAL:

LT COL VALENTINO A. DIONELA PAF (RET)
ADG II ADMS

APPROVED:

CAPTAIN MANUEL ANTONIO L. TAMAYO
Division General

NOTES / REVISIONS:

PROJECT TITLE:

PROVISION OF COVERED SHED AT MAIN GATE

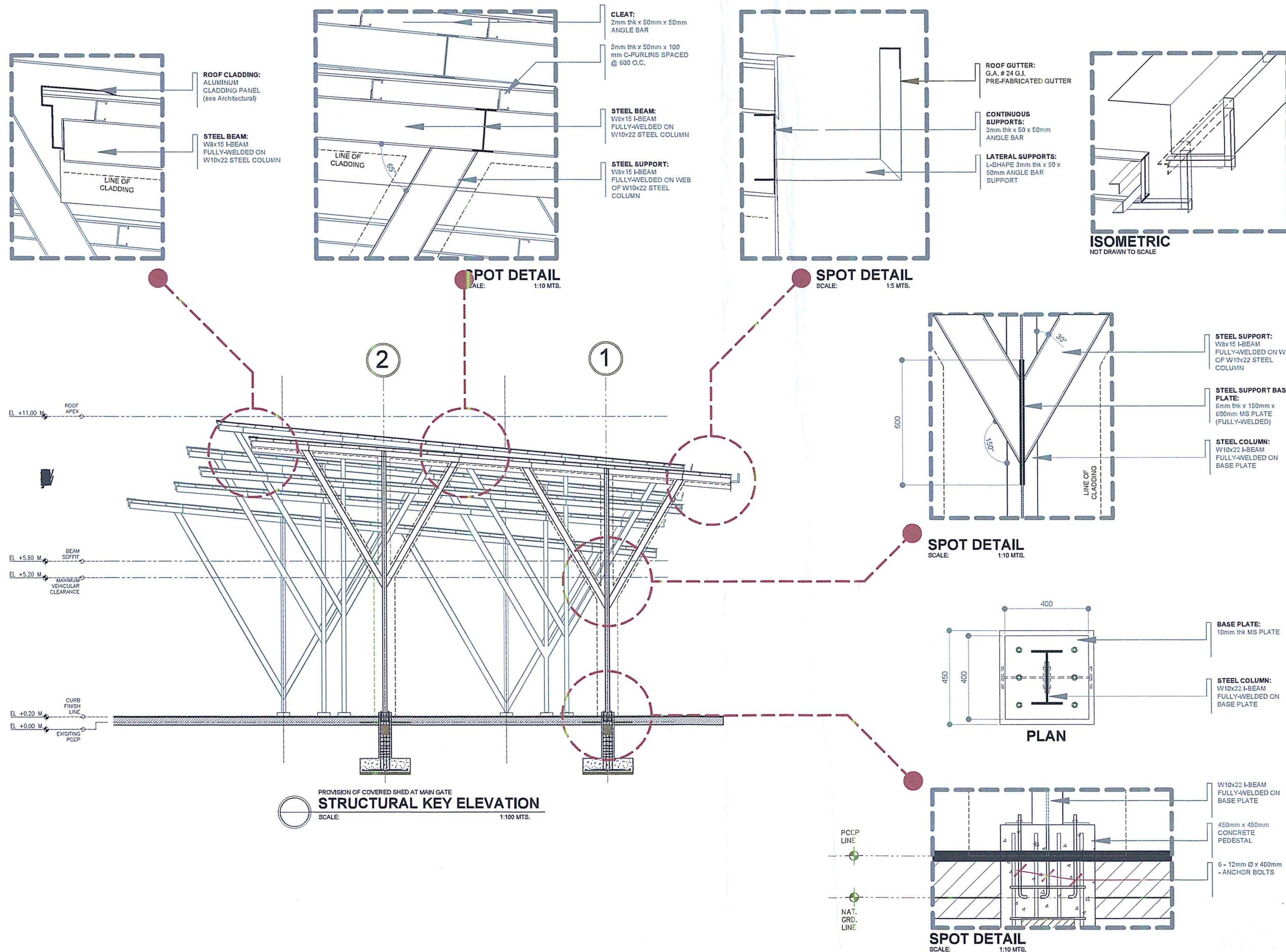
LOCATION:

BICOL INTERNATIONAL AIRPORT
DARAGA, ALBAY

SHEET CONTENTS:

- MISCELLANEOUS DETAILS (STRUCTURAL)

DRAWING SCALE:	SHEET NO:
AS SHOWN	S - 04





CIVIL AVIATION AUTHORITY OF THE PHILIPPINES

THIS DRAWING IS AN EXCLUSIVE PROPERTY OF CIVIL AVIATION AUTHORITY OF THE PHILIPPINES AND MUST NOT BE REPRODUCED, EXHIBITED, LOANED NOR COPIED IN PART OR IN WHOLE WITHOUT PROPER PERMISSION AND/OR WRITTEN CONSENT FROM THE CAAP DIRECTOR GENERAL.

AERODROME DEVELOPMENT
AND MANAGEMENT SERVICEINFRASTRUCTURE DEVELOPMENT
AND DESIGN DIVISION

DESIGN STAFF: INITIAL / DATE

DESIGNED BY: IDDD

DRAWN BY: JPCJR

CHECKED BY: RUAJR

EPS

REVIEWED BY:

EMERSON P. SALAS
Supervising Aerodrome Engineer, IDDD-ADMS

SUBMITTED BY:

ARNEL F. BORLADO
Department Manager III, AED-ADMS

RECOMMENDED APPROVAL:

LT COL VALENTINO A. DIONELA PAF (RET)
ADG-H, ADMS

APPROVED:

CAPTAIN MANUEL ANTONIO L. TAMAYO
Director General

NOTES : REVISIONS:

PROJECT TITLE:

PROVISION OF COVERED
SHED AT MAIN GATE

LOCATION:

BICOL INTERNATIONAL
AIRPORT
DARAGA, ALBAY

SHEET CONTENTS:

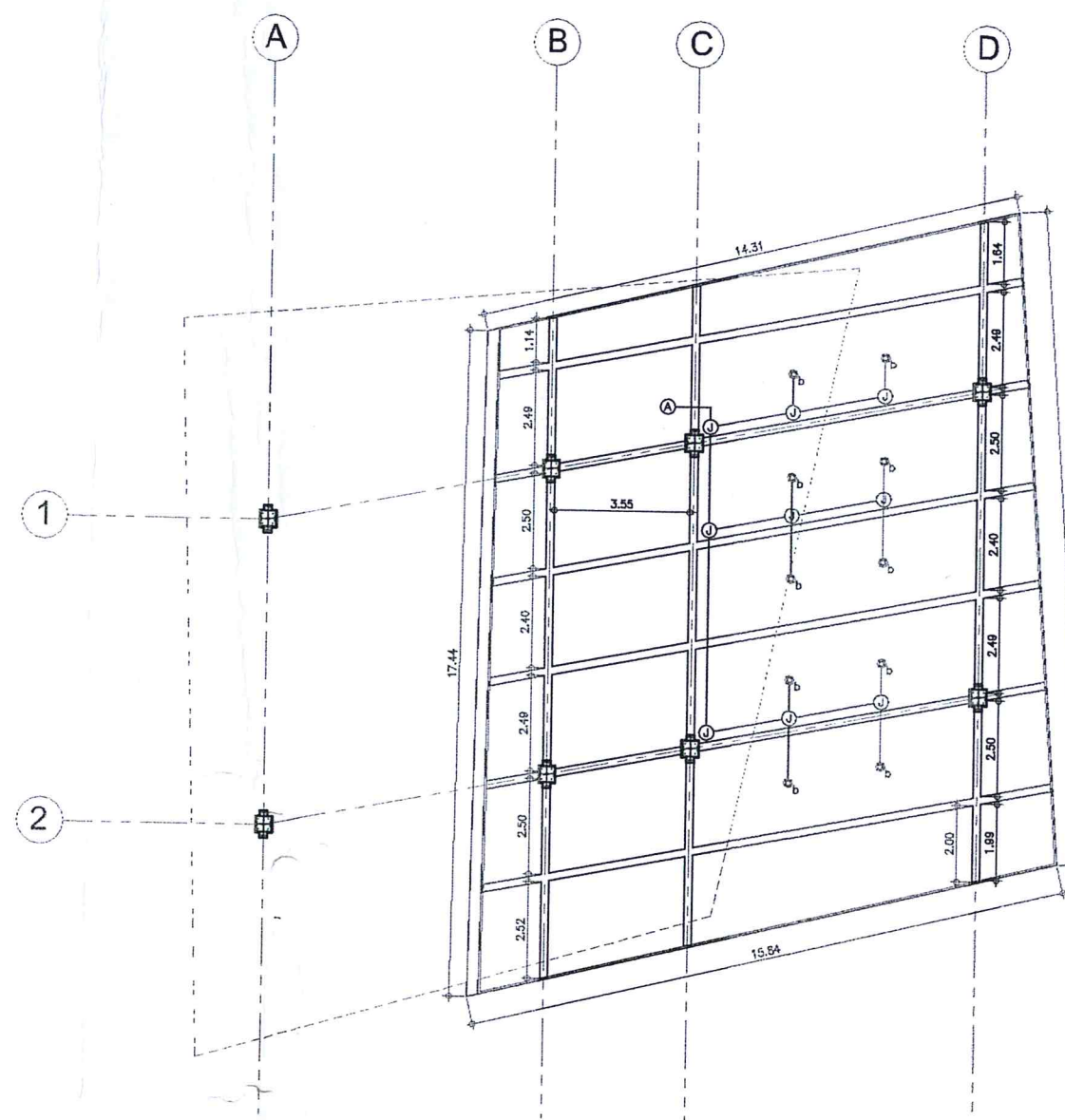
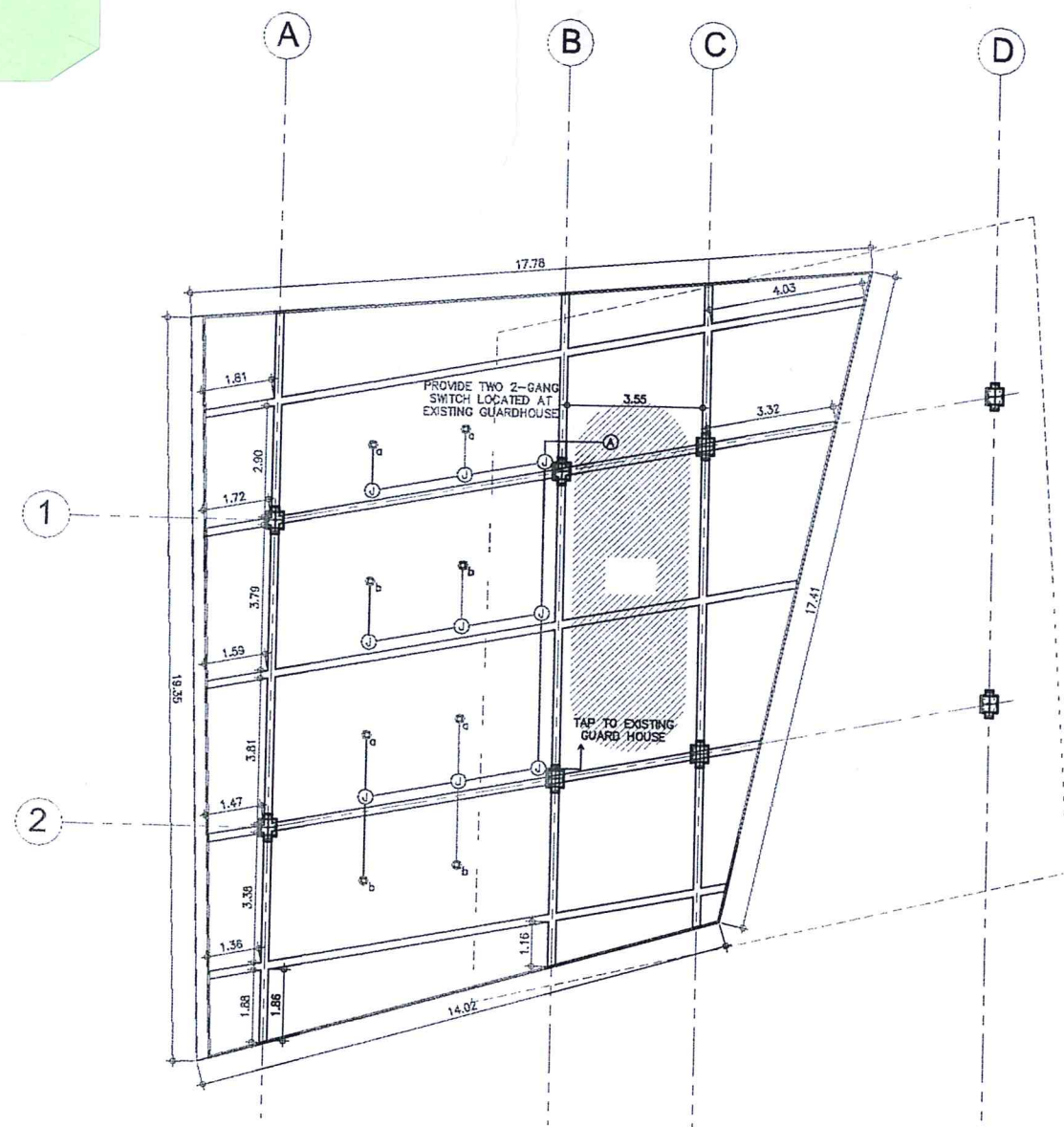
— LIGHTING LAYOUT PLAN

DRAWING SCALE:

AS SHOWN

SHEET NO:

08



GENERAL NOTES & SPECIFICATIONS:

1. ALL ELECTRICAL EQUIPMENT SHALL BE PROPERLY GROUNDED IN ACCORDANCE WITH THE REQUIREMENT OF THE PHILIPPINE ELECTRICAL CODE.
2. ALL MATERIALS TO BE USED SHALL BE NEW AND OF THE APPROVED TYPE FOR BOTH LOCATION AND PURPOSE INTENDED.
3. WIRES AND CABLES TO BE USED SHALL BE UNDERWRITERS LABORATORY (UL) LISTED.
4. MATERIALS AND EQUIPMENT TO BE USED (LIGHTING FIXTURES, BALLAST, FLUORESCENT TUBE, WIRING DEVICES, CIRCUIT BREAKERS, CONDUIT AND PIPES, ENCLOSURES, WIRES AND CABLES, ETC) SHALL HAVE IMPORTED COMMODITY CLEARANCE (ICC) LABEL FOR FOREIGN MADE PRODUCTS AND P.S. MARK FOR LOCAL IN NATURE OF THE BUREAU OF PRODUCT STANDARD (BPS).
5. JUNCTION BOXES AND PULL BOXES GAUGE NO. 16 (MINIMUM) SHALL BE PROVIDED BY THE CONTRACTOR WHENEVER REQUIRED AND NECESSARY AND SHALL BE INSTALLED AT CONVENIENT SPACE AND LOCATION TO FACILITATE WIRE PULLING EVEN IF THESE ITEMS ARE NOT SHOWN IN THE PLAN.
6. ALL WORKS SHALL BE EXECUTED IN A WORKMANSHIP MANNER AND SHALL PRESENT A NEAT AND ORDERLY ACCEPTANCE. ALL WIRING SHALL BE CONCEALED AS MUCH AS POSSIBLE.

LEGEND:



CIRCUIT HOMERUN



CONDUIT RUN

180MM DIA X 185MM SURFACE MOUNTED DOWN LIGHT FIXTURE
WITH 40 WATTS LED COB, ALUMINUM HOUSING AND CLEAR
GLASS COVER

JUNCTION BOX