



REPUBLIC OF THE PHILIPPINES
CIVIL AVIATION AUTHORITY OF THE PHILIPPINES
AERODROME DEVELOPMENT AND MANAGEMENT SERVICE
NAIA ROAD, 1365 PASAY CITY

THIS DRAWING AND DESIGN IS EXCLUSIVE
PROPERTY OF CIVIL AVIATION AUTHORITY
OF THE PHILIPPINES AND SUCH MUST NOT BE
REPRODUCED, EXHIBITED, LOANED NOR
COPIED IN PART OR IN WHOLE WITHOUT
PROPER PERMISSION AND/OR WRITTEN
CONSENT FROM THE DIRECTOR GENERAL
CAAP.

AERODROME DEVELOPMENT
AND MANAGEMENT SERVICE

INFRASTRUCTURE DEVELOPMENT
AND DESIGN DIVISION

DESIGN STAFF:	INITIAL / DATE
DESIGNED BY:	IDDD
DRAWN BY:	RUAJR
CHECKED BY:	EJDR

REVIEWED BY:

RAUL R. CRUZENA
Division Chief III, IDDD - ADMS

SUBMITTED BY:

ARNEL F. BORLADO
Department Manager III, AED-ADMS

RECOMMENDED APPROVAL:

LT COL. VALENTINO A. DIGNELA, PAF (Ret)
Assistant Director General II, ADMS

APPROVED:

CAPTAIN MANUEL ANTONIO L. TAMAYO
Director General

NOTES/REVISIONS:

PROJECT:

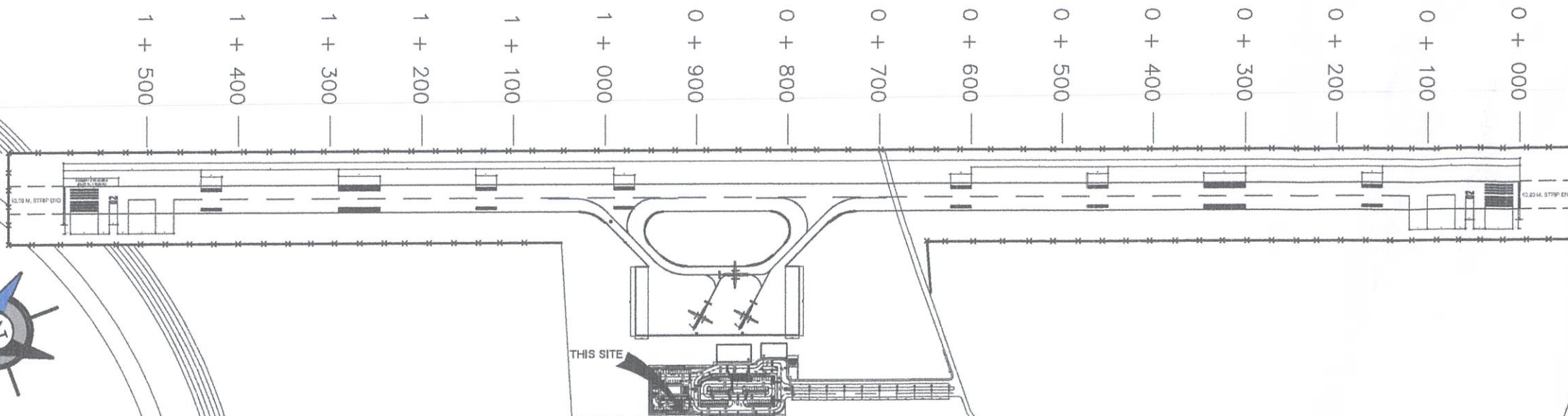
BORONGAN AIRPORT
DEVELOPMENT PROJECT
VPA AND ACCESS ROAD
LIGHTING

LOCATION:

BORONGAN AIRPORT
BORONGAN

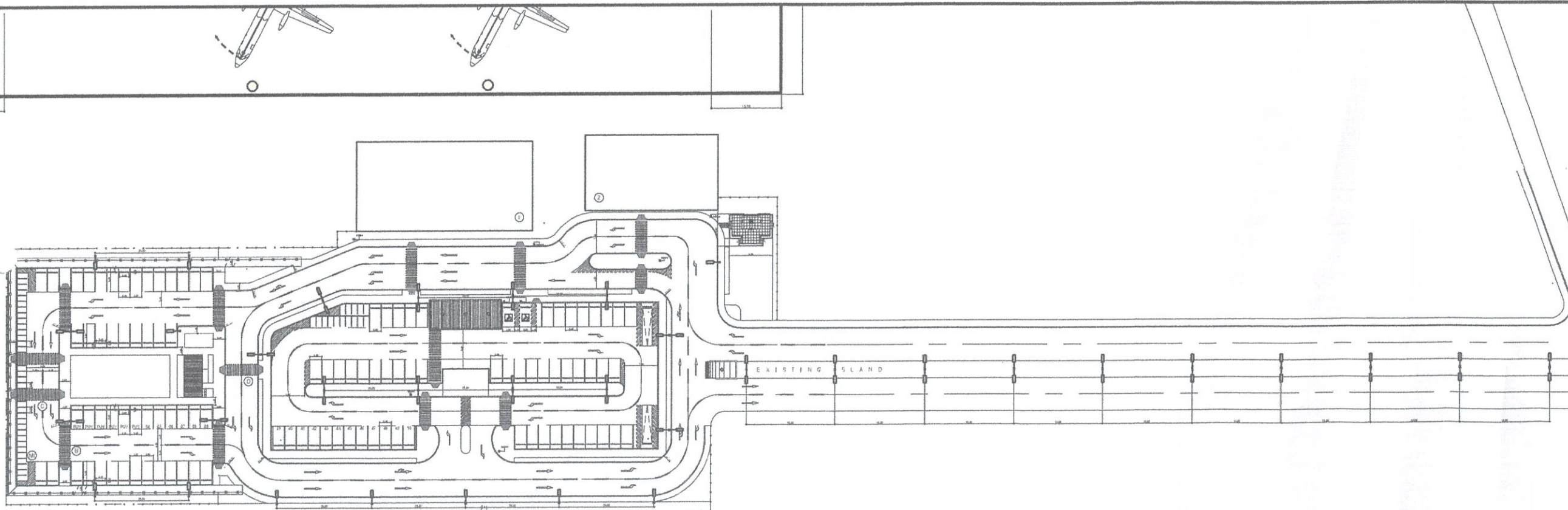
SHEET CONTENTS:

DRAWING SCALE:	SHEET NO.
AS SHOWN	E 02



BORONGAN AIRPORT DEVELOPMENT PROJECT
LOCATION MAP

SCALE: NTS



COMPLETION OF VEHICULAR PARKING AREA
STREET LIGHTING LAYOUT

SCALE: NTS



REPUBLIC OF THE PHILIPPINES
CIVIL AVIATION AUTHORITY OF THE PHILIPPINES
AERODROME DEVELOPMENT AND MANAGEMENT SERVICE
NAIA ROAD, 1300 PASAY CITY

THIS DRAWINGS AND DESIGN IS EXCLUSIVE
PROPERTIES OF CIVIL AVIATION AUTHORITY
OF THE PHILIPPINES AND SUCH MUST NOT BE
REPRODUCED, EXHIBITED, LOANED NOR
COPIED IN PART OR IN WHOLE WITHOUT
PROPER PERMISSION AND/OR WRITTEN
CONSENT FROM THE DIRECTOR GENERAL
CAAP

AERODROME DEVELOPMENT
AND MANAGEMENT SERVICE

INFRASTRUCTURE DEVELOPMENT
AND DESIGN DIVISION

DESIGN STAFF:	INITIAL / DATE
DESIGNED BY:	IDDD
DRAWN BY:	E.V.B. (janz27)
CHECKED BY:	EJDR

REVIEWED BY:

RAUL R. CRUCENA
Division Chief III, IDDD - ADMS

SUBMITTED BY:

ARNEL F. BORLADO
Department Manager III, AED-ADMS

RECOMMENDED APPROVAL:

LT COL VALENTINO A. DIONELA, PAF (Ret)
Assistant Director General II, ADMS

APPROVED:

CAPTAIN MANUEL ANTONIO L. TAMAYO
Director General

NOTES/REVISIONS:

PROJECT:

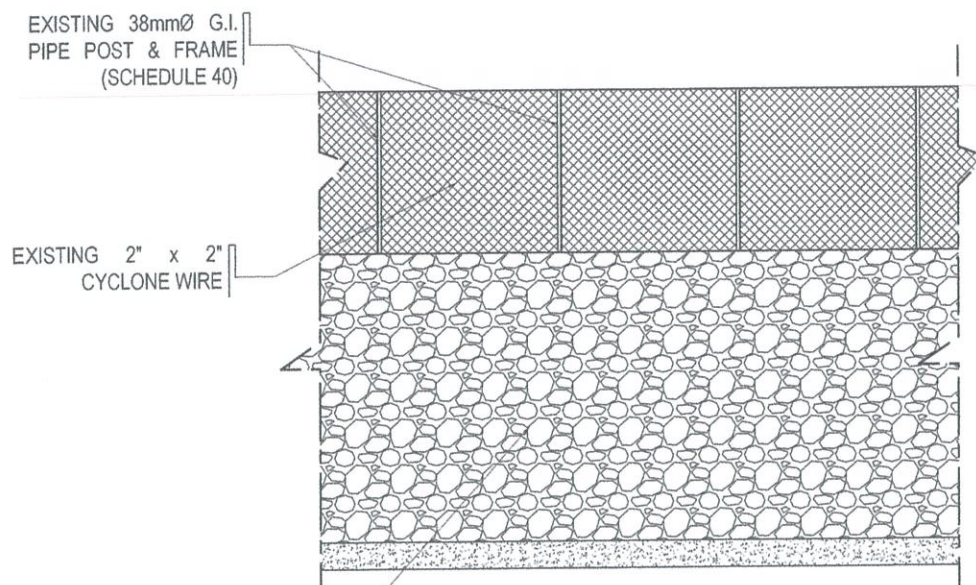
BORONGAN AIRPORT
DEVELOPMENT PROJECT
(PERIMETER AND SECURITY
FENCE AND SLOPE PROTECTION)

LOCATION:

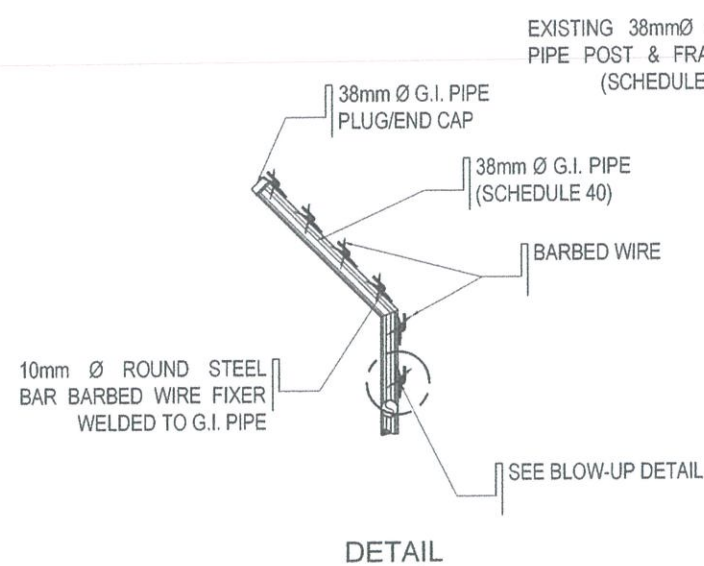
BORONGAN AIRPORT
BORONGAN

SHEET CONTENTS:

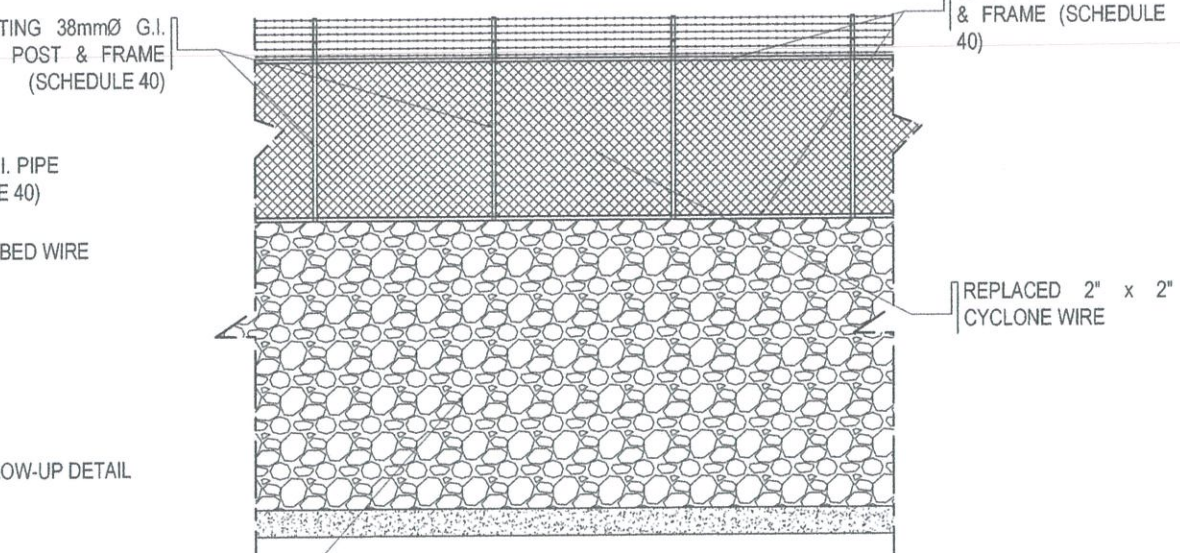
DRAWING SCALE:	SHEET NO.
AS SHOWN	38



EXISTING SECURITY FENCE
VERIFY SITE DEVELOPMENT PLAN (I-1)

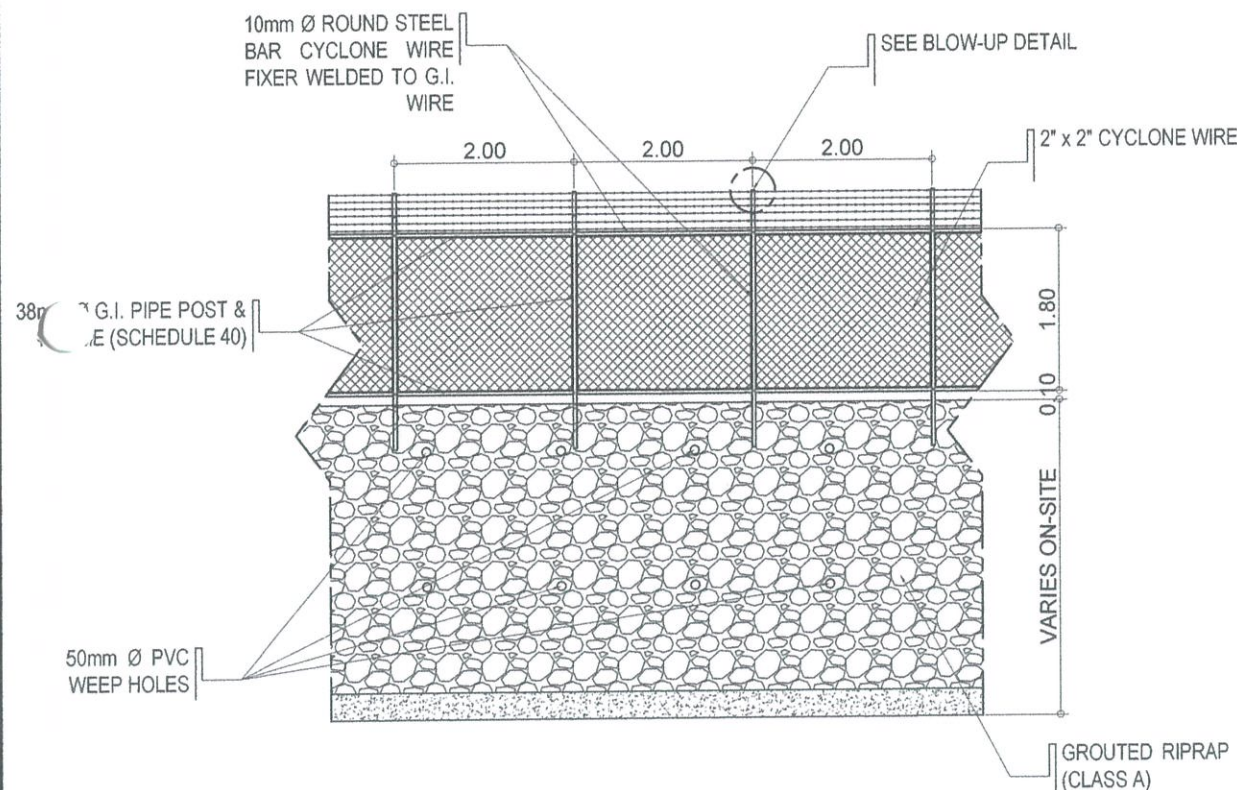


DETAIL

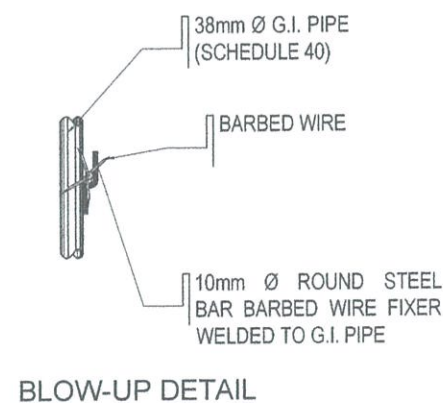


REPAIR OF EXISTING SECURITY FENCE
VERIFY SITE DEVELOPMENT PLAN (I-1)

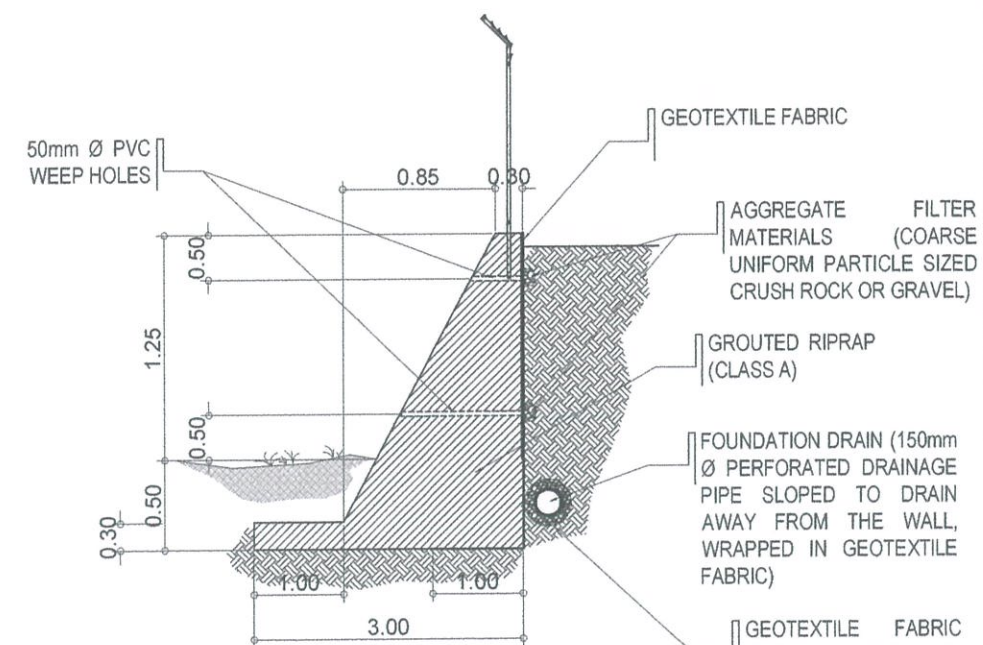
COMPLETION OF VEHICULAR PARKING AREA
EXISTING SECURITY FENCE DETAIL
SCALE: 1:50 MTRS



SECURITY FENCE with SLOPE PROTECTION
(ELEVATION)
VERIFY SITE DEVELOPMENT PLAN (A-1, B-1, C-1)

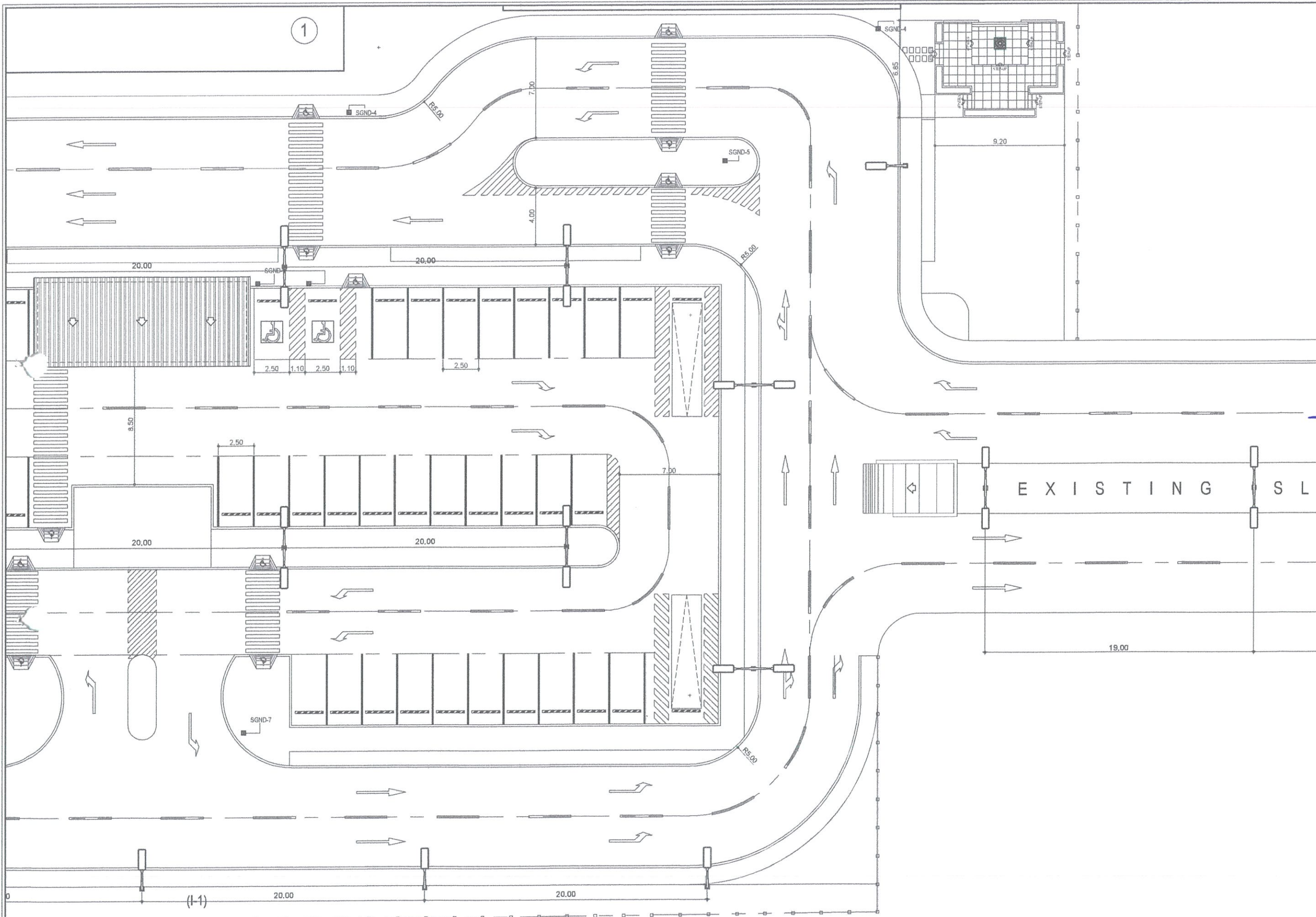


BLOW-UP DETAIL



SECURITY FENCE with SLOPE PROTECTION
(SECTION)
VERIFY SITE DEVELOPMENT PLAN (A-1, B-1, C-1)

COMPLETION OF VEHICULAR PARKING AREA
DETAIL OF SECURITY FENCE 01
SCALE: 1:50 MTRS



REPUBLIC OF THE PHILIPPINES
CIVIL AVIATION AUTHORITY OF THE PHILIPPINES
AERODROME DEVELOPMENT AND MANAGEMENT SERVICE
NAA ROAD, 1385 PASAY CITY

THIS DRAWINGS AND DESIGN IS EXCLUSIVE PROPERTIES OF CIVIL AVIATION AUTHORITY OF THE PHILIPPINES AND SUCH MUST NOT BE REPRODUCED, EXHIBITED, LOANED NOR COPIED IN PART OR IN WHOLE WITHOUT PROPER PERMISSION AND/OR WRITTEN CONSENT FROM THE DIRECTOR GENERAL CAAP.

AERODROME DEVELOPMENT AND MANAGEMENT SERVICE

INFRASTRUCTURE DEVELOPMENT AND DESIGN DIVISION

DESIGN STAFF:	INITIAL / DATE
DESIGNED BY:	IDDD
DRAWN BY:	RUAJR
CHECKED BY:	EJDIR

REVIEWED BY:

RAUL R. CRUZENA
Division Chief III, IDDD - ADMS

SUBMITTED BY:

ARNEL F. BORLADO
Department Manager III, AED-ADMS

RECOMMENDED APPROVAL:

LT COL VALENTINO A. DIONELA, PAF (Ret)
Assistant Director General II/ADMS

APPROVED:

CAPTAIN MANUEL ANTONIO L. TAMAYO
Director General

NOTES/REVISIONS:

PROJECT:
BORONGAN AIRPORT
DEVELOPMENT PROJECT
VPA AND ACCESS ROAD
LIGHTING

LOCATION:
BORONGAN AIRPORT
BORONGAN

SHEET CONTENTS:

DRAWING SCALE:	SHEET NO.
AS SHOWN	E 04

COMPLETION OF VEHICULAR PARKING AREA
STREET LIGHTING LAYOUT (BLOW-UP B)
SCALE: 1:100 MTRS



REPUBLIC OF THE PHILIPPINES

CIVIL AVIATION AUTHORITY OF THE PHILIPPINES
AERODROME DEVELOPMENT AND MANAGEMENT SERVICE
1500 ROAD, 1500 PASAY CITY

THIS DRAWINGS AND DESIGN IS EXCLUSIVE
PROPERTY OF CIVIL AVIATION AUTHORITY
OF THE PHILIPPINES AND SUCH MUST NOT BE
REPRODUCED, EXHIBITED, LOANED NOR
COPIED IN PART OR IN WHOLE WITHOUT
PROPER PERMISSION AND/OR WRITTEN
CONSENT FROM THE DIRECTOR GENERAL
CAAP.

AERODROME DEVELOPMENT
AND MANAGEMENT SERVICE

INFRASTRUCTURE DEVELOPMENT
AND DESIGN DIVISION

DESIGN STAFF:	INITIAL / DATE
DESIGNED BY:	DDDD
DRAWN BY:	RUAJR
CHECKED BY:	EJDR

REVIEWED BY:

RAUL R. CRUCENA
Division Chief III, DDD - ADMS

SUBMITTED BY:

ARNEL F. BORLADO
Department Manager III, AED-ADMS

RECOMMENDED APPROVAL:

LT COL. VALENTINO A. DIONELA, PAF (Ret)
Assistant Director General II, ADMS

APPROVED:

CAPTAIN MANUEL ANTONIO L. TAMAYO
Director General

NOTES/REVISIONS:

PROJECT:
BORONGAN AIRPORT
DEVELOPMENT PROJECT
VPA AND ACCESS ROAD
LIGHTING

LOCATION:
BORONGAN AIRPORT
BORONGAN

SHEET CONTENTS:

DRAWING SCALE:	SHEET NO.
AS SHOWN	E 05

A N D

19.00

19.00

19.00

19.00

19.00

COMPLETION OF VEHICULAR PARKING AREA
STREET LIGHTING LAYOUT (BLOW-UP C)
SCALE: 1:100 MTRS

19.00

19.00

19.00

COMPLETION OF VEHICULAR PARKING AREA
STREET LIGHTING LAYOUT (BLOW-UP D)
SCALE: 1:100 MTRS



REPUBLIC OF THE PHILIPPINES
CIVIL AVIATION AUTHORITY OF THE PHILIPPINES
AERODROME DEVELOPMENT AND MANAGEMENT SERVICE
NAIA ROAD, 1306 PASAY CITY

THIS DRAWINGS AND DESIGN IS EXCLUSIVE
PROPERTIES OF CIVIL AVIATION AUTHORITY
OF THE PHILIPPINES AND SUCH MUST NOT BE
REPRODUCED, EXHIBITED, LOANED NOR
COPIED IN PART OR IN WHOLE WITHOUT
PROPER PERMISSION AND/OR WRITTEN
CONSENT FROM THE DIRECTOR GENERAL
CAAP.

AERODROME DEVELOPMENT
AND MANAGEMENT SERVICE

INFRASTRUCTURE DEVELOPMENT
AND DESIGN DIVISION

DESIGN STAFF:	INITIAL / DATE
DESIGNED BY:	IDDD
DRAWN BY:	E.V.B (jangz27)
CHECKED BY:	EJDR

REVIEWED BY:

RAUL R. CRUCENA
Division Chief III, IDDD - ADMS

SUBMITTED BY:

ARNEL F. BORLADO
Department Manager III, AED-ADMS

RECOMMENDED APPROVAL:

LT COL VALENTINO A. DIONELA, PAF (Ret)
Assistant Director General II, ADMS

APPROVED:

CAPTAIN MANUEL ANTONIO L. TAMAYO
Director General

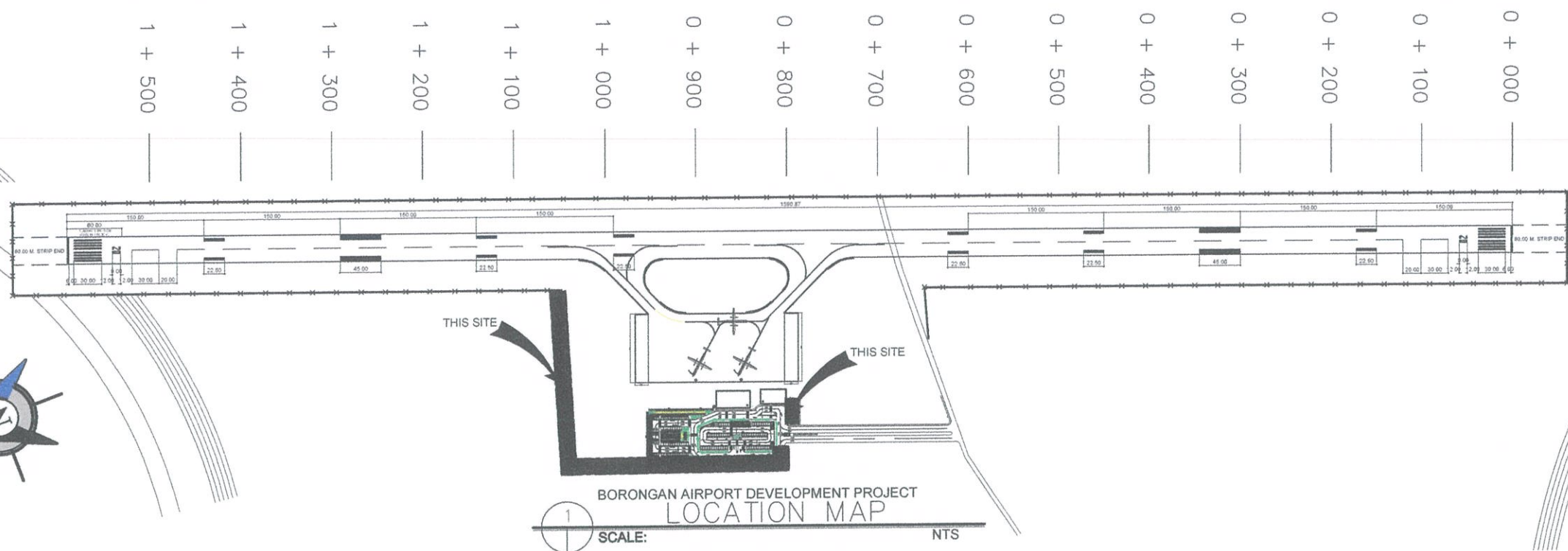
NOTES/REVISIONS:

PROJECT:
BORONGAN AIRPORT
DEVELOPMENT PROJECT
PERIMETER AND SECURITY FENCE
AND SLOPE PROTECTION

LOCATION:
BORONGAN AIRPORT
BORONGAN

SHEET CONTENTS:

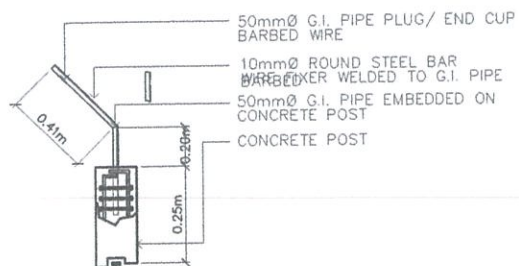
DRAWING SCALE:	SHEET NO:
AS SHOWN	08



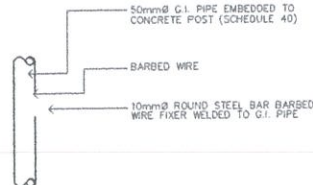
SLOPE PROTECTION

NOTE:

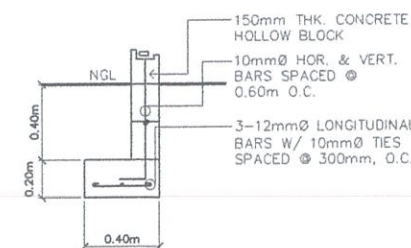
- CHB WALL
SHALL BE ROUGH CEMENT PLASTER FINISH
WITH GROOVE (BOTH FACE).
- CONCRETE COLUMNS
SHALL BE CEMENT PLASTERED FINISH.
- G.I. PIPE
SHALL BE SCHEDULE 40.
- PAINTINGS
ALL G.I. PIPES SHALL BE PAINTED WITH RED
LEAD OXIDE, RED LEAD, OR EPOXY PRIMER AS
SPECIFIED BEFORE FINAL COAT IS APPLIED.



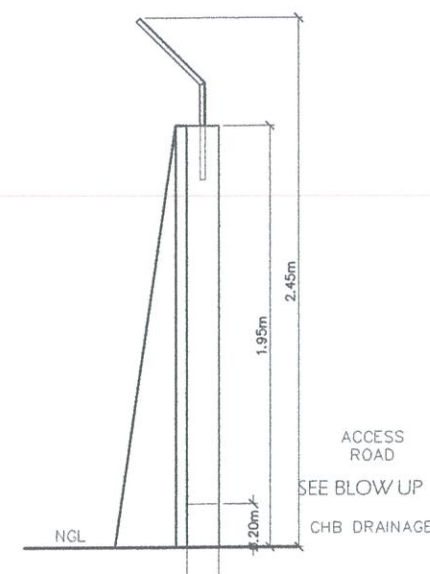
**DETAIL OF G.I. PIPE
EMBEDDED ON
CONCRETE POST**
SCALE 1:20 M



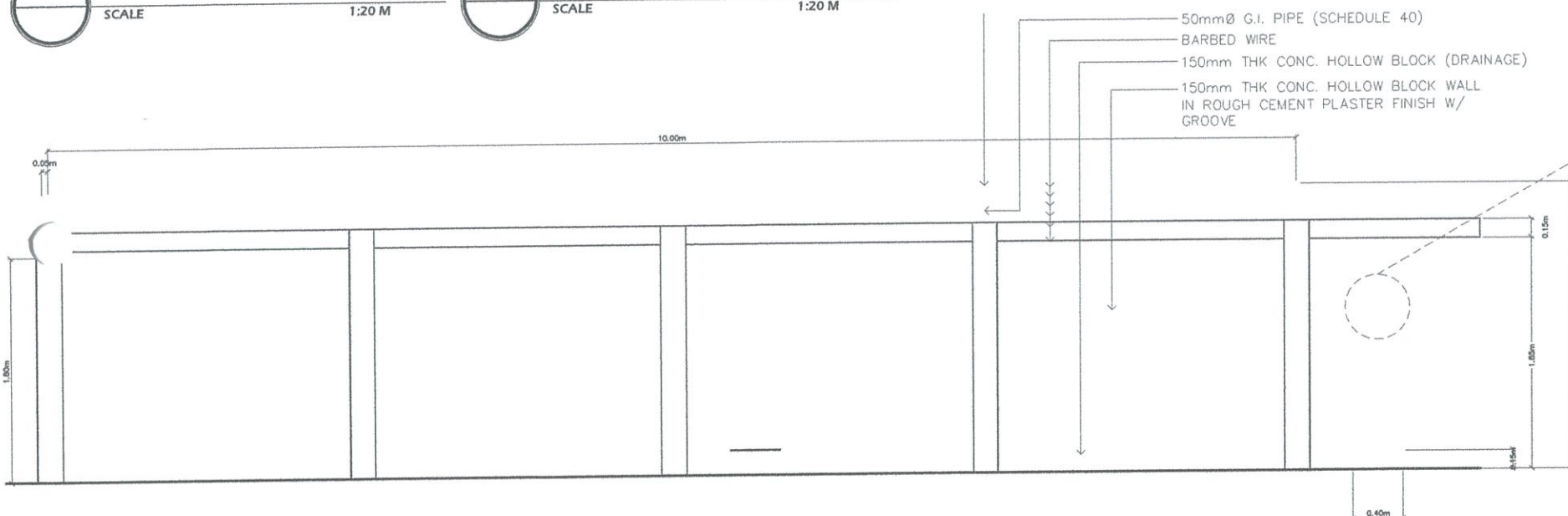
**DETAIL OF G.I. PIPE
EMBEDDED ON
CONCRETE POST**
SCALE 1:20 M



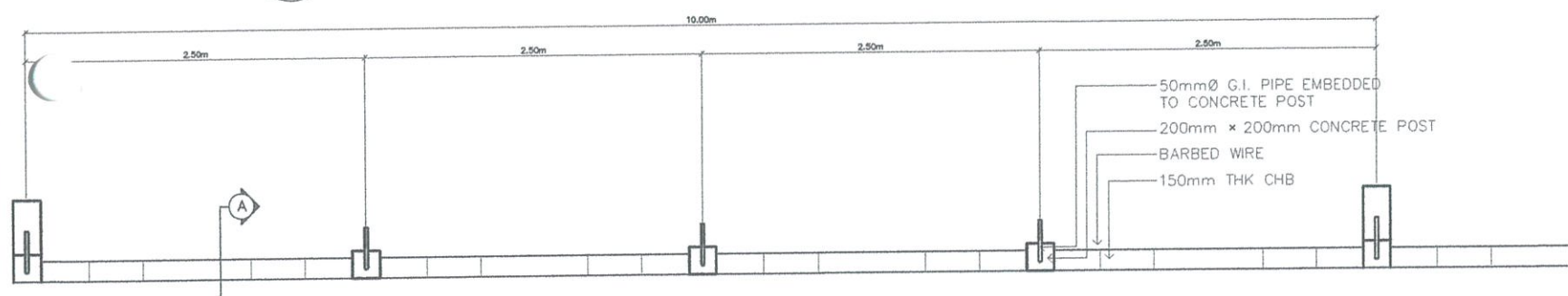
**WALL FOOTING
DETAIL**
SCALE 1:20 M



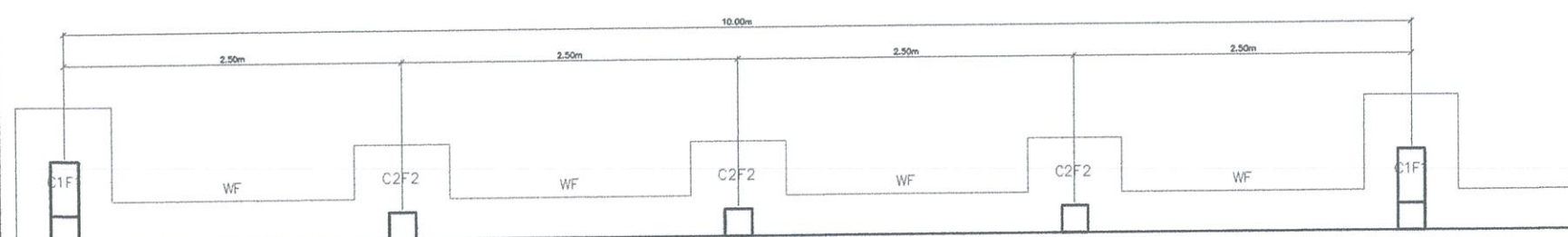
SECTION THRU "A"
SCALE 1:20 M



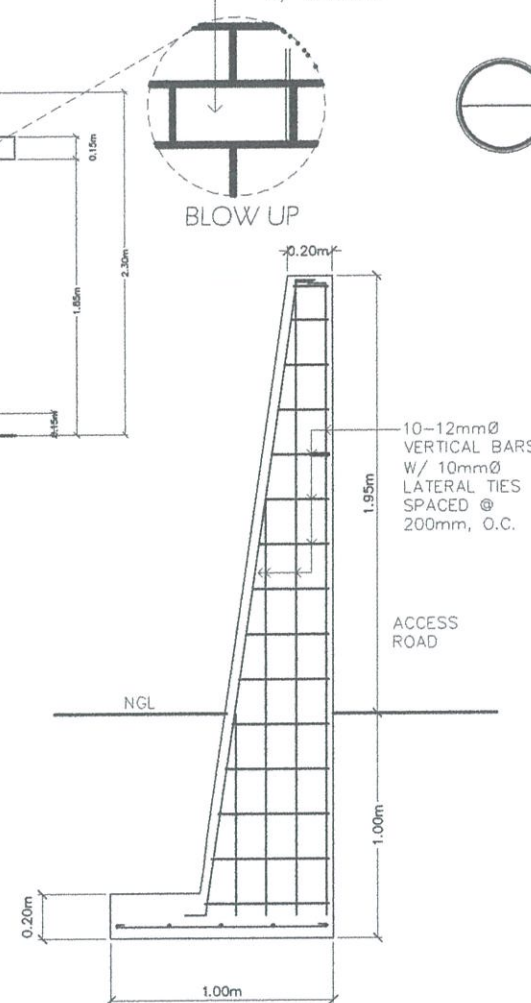
FRONT ELEVATION OF CHB FENCE WITH BARBED WIRE
SCALE 1:30 M



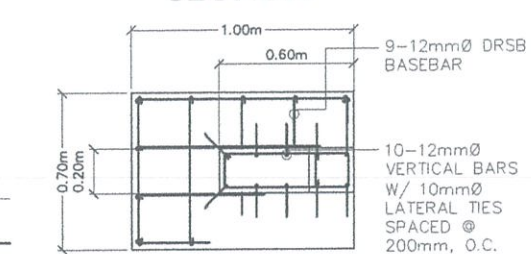
PLAN OF CHB FENCE WITH BARBED WIRE
SCALE 1:30 M



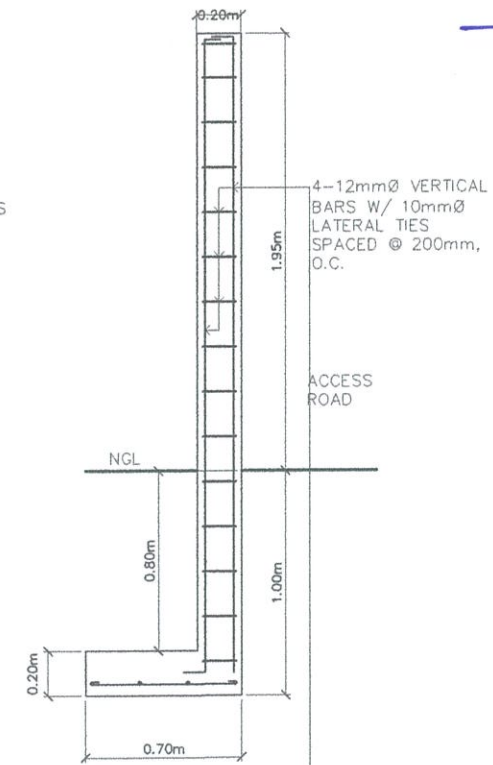
FOUNDATION PLAN
SCALE 1:30 M



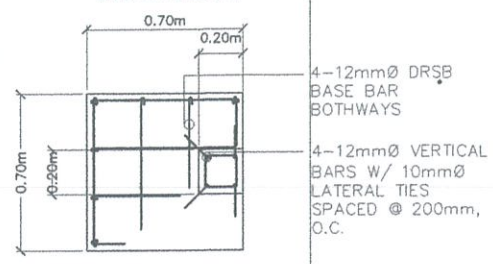
SECTION



DETAIL OF C1F1
SCALE 1:20 M



SECTION



DETAIL OF C2F2
SCALE 1:20 M



REPUBLIC OF THE PHILIPPINES
CIVIL AVIATION AUTHORITY OF THE PHILIPPINES
AERODROME DEVELOPMENT AND MANAGEMENT SERVICE
NAIA ROAD, 1300 PASAY CITY

THIS DRAWINGS AND DESIGN IS EXCLUSIVE
PROPERTIES OF CIVIL AVIATION AUTHORITY
OF THE PHILIPPINES AND SUCH MUST NOT BE
REPRODUCED, EXHIBITED, LOANED NOR
COPIED IN PART OR IN WHOLE WITHOUT
PROPER PERMISSION AND/OR WRITTEN
CONSENT FROM THE DIRECTOR GENERAL
CAAP.

AERODROME DEVELOPMENT
AND MANAGEMENT SERVICE

INFRASTRUCTURE DEVELOPMENT
AND DESIGN DIVISION

DESIGN STAFF:	INITIAL / DATE
DESIGNED BY:	IDDD
DRAWN BY:	E.V.B (iang27)
CHECKED BY:	EJOUR

REVIEWED BY:

RAUL R. CRUCENA
Division Chief III, IDDD - ADMS

SUBMITTED BY:

ARNEL F. BORLADO
Department Manager III, AED-ADMS

RECOMMENDED APPROVAL:

LT COL VALENTINO A. DIONELA, PAF (Ret)
Assistant Director General II, ADMS

APPROVED:

CAPTAIN MANUEL ANTONIO L. TAMAYO
Director General

NOTES/REVISIONS:

PROJECT:

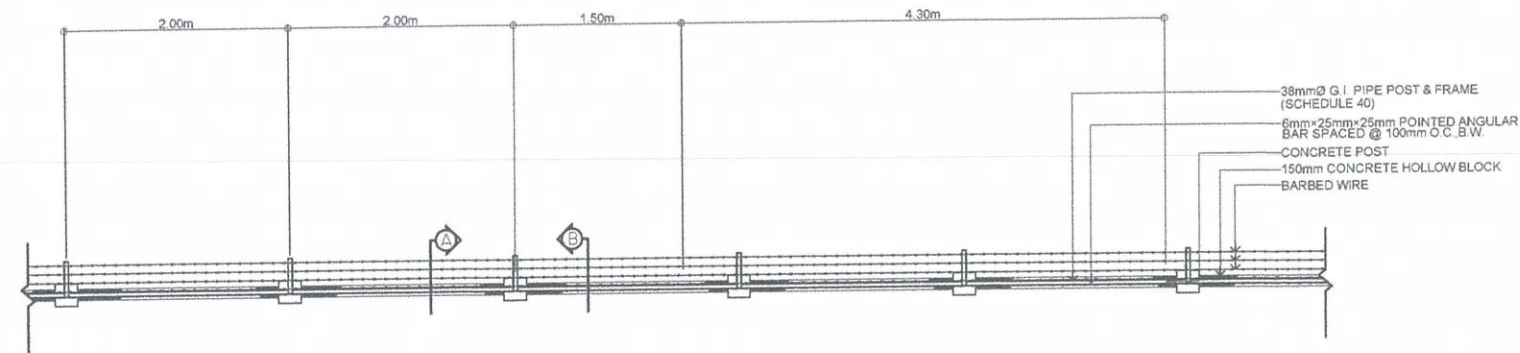
BORONGAN AIRPORT
DEVELOPMENT PROJECT
PERIMETER AND SECURITY
FENCE AND SLOPE PROTECTION

LOCATION:

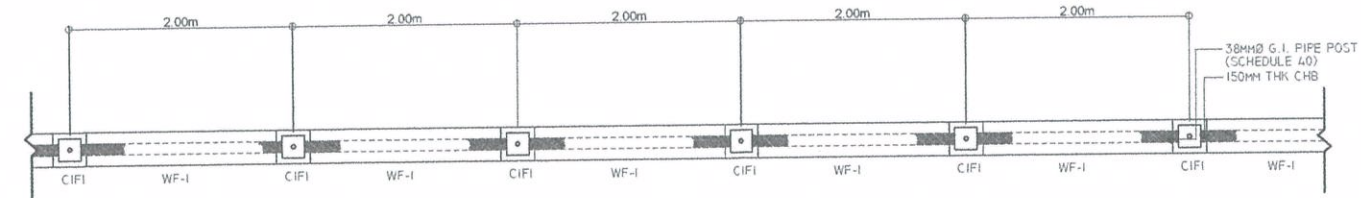
BORONGAN AIRPORT
BORONGAN

SHEET CONTENTS:

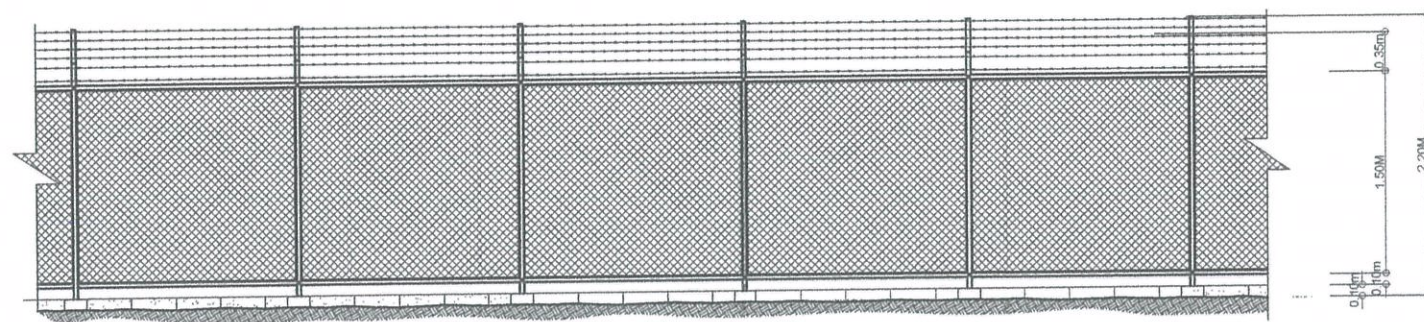
DRAWING SCALE:	SHEET NO:
AS SHOWN	39



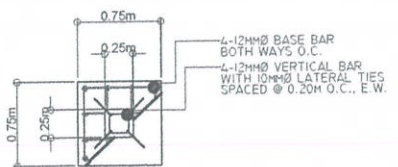
S-2 PLAN OF SECURITY FENCE 02
SCALE 1:40 MTS



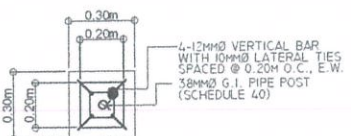
S-3 FOUNDATION PLAN
SCALE 1:40 MTS



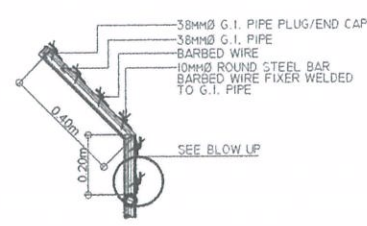
S-4 ELEVATION OF SECURITY FENCE
SCALE 1:40 MTS



S-5 DET. PLAN OF C2F2
SCALE 1:40 MTS

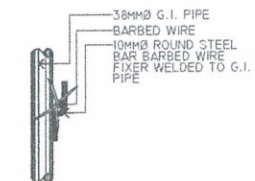


S-6 DET. PLAN OF C1F1
SCALE 1:20 MTS

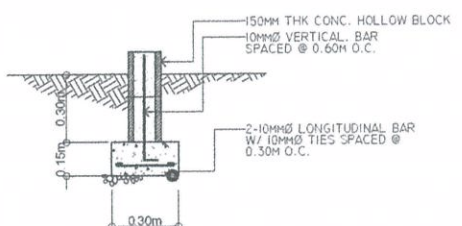


DETAIL

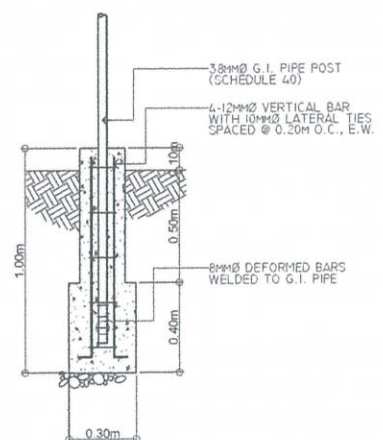
S-9 DET. ELEV. OF BARBED WIRE FIXER WELDED TO G.I. PIPE
SCALE 1:15 MTS



BLOW UP



S-7 DET. ELEV. OF WF-1
SCALE 1:20 MTS



S-8 DET. SECTION OF C1F1
SCALE 1:20 MTS

S-1 DETAIL OF SECURITY FENCE 02
SCALE 1:40 MTS


THIS DRAWINGS AND DESIGN IS EXCLUSIVE PROPERTIES OF CIVIL AVIATION AUTHORITY OF THE PHILIPPINES AND SUCH MUST NOT BE REPRODUCED, EXHIBITED, LOANED NOR COPIED IN PART OR IN WHOLE WITHOUT PROPER PERMISSION AND/OR WRITTEN CONSENT FROM THE DIRECTOR GENERAL CAAP.

AERODROME DEVELOPMENT AND MANAGEMENT SERVICE


INFRASTRUCTURE DEVELOPMENT AND DESIGN DIVISION

DESIGN STAFF:	INITIAL / DATE
DESIGNED BY:	IDDD
DRAWN BY:	E.V.B (iangz27)
CHECKED BY:	EJDJR

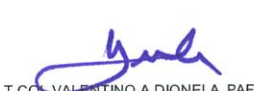
REVIEWED BY:


RAUL R. CRUCENA
Division Chief III, IDDD - ADMS


SUBMITTED BY:


ARNEL F. BORLADO
Department Manager IIIAED-ADMS

RECOMMENDED APPROVAL:


LT COL. VALENTINO A. DIONELA, PAF (Ret)
Assistant Director General II, ADMS

APPROVED:


CAPTAIN MANUEL ANTONIO L. TAMAYO
Colonel General

NOTES/REVISIONS:

PROJECT:

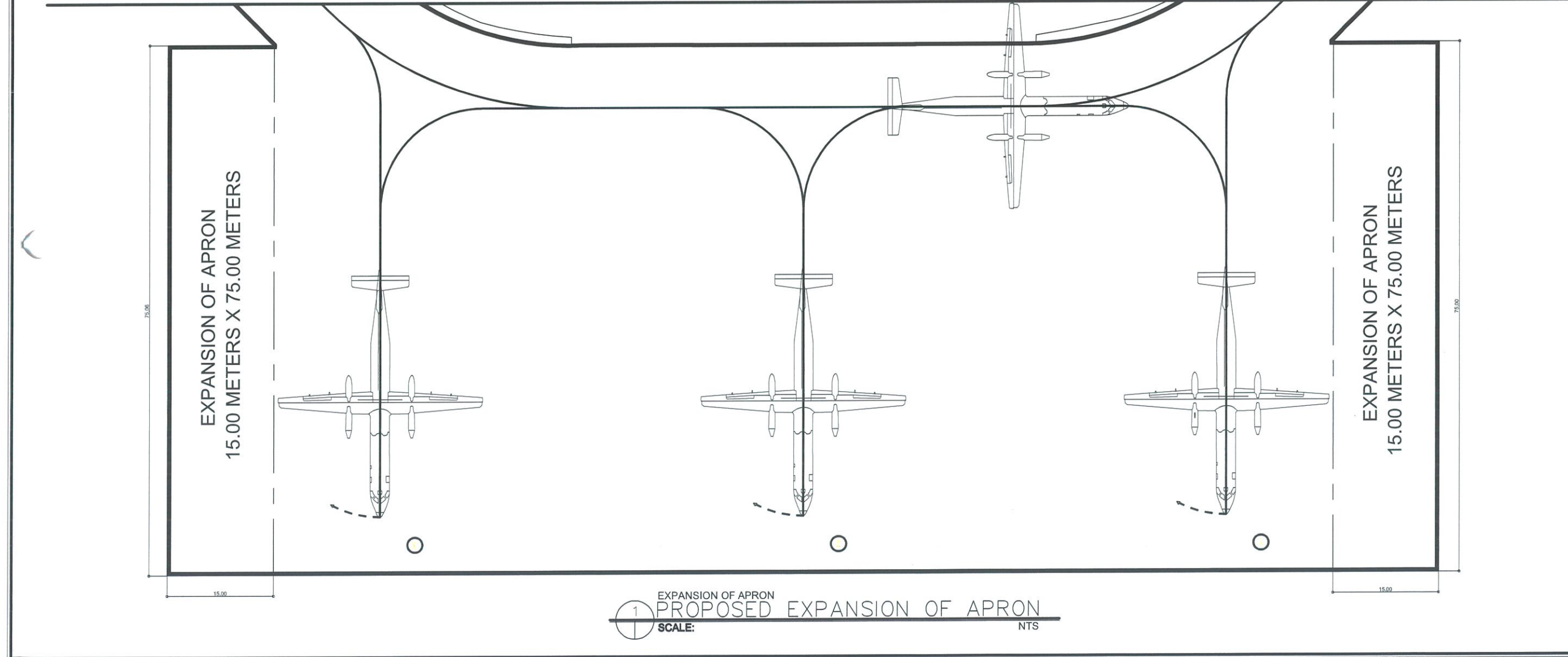
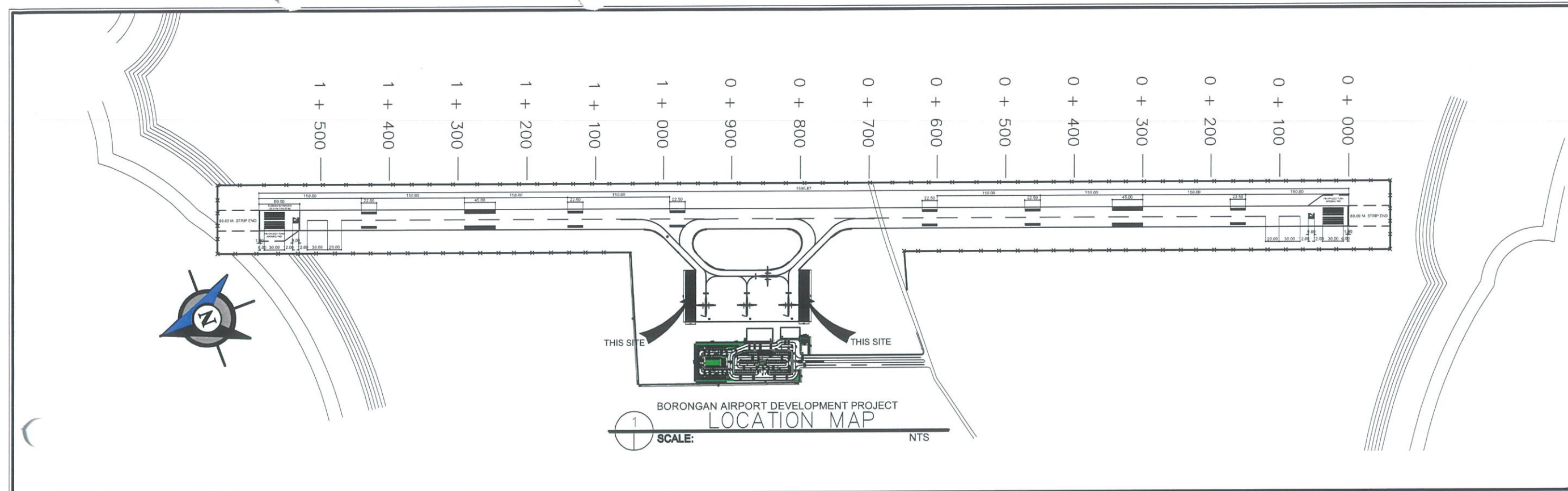
BORONGAN AIRPORT DEVELOPMENT PROJECT
EXPANSION OF APRON

LOCATION:

BORONGAN AIRPORT
BORONGAN

SHEET CONTENTS:

DRAWING SCALE:	SHEET NO:
AS SHOWN	01





REPUBLIC OF THE PHILIPPINES
CIVIL AVIATION AUTHORITY OF THE PHILIPPINES
AERODROME DEVELOPMENT AND MANAGEMENT SERVICE
NAA ROAD, 1305 PASAY CITY

THIS DRAWINGS AND DESIGN IS EXCLUSIVE PROPERTIES OF CIVIL AVIATION AUTHORITY OF THE PHILIPPINES AND SUCH MUST NOT BE REPRODUCED, EXHIBITED, LOANED NOR COPIED IN PART OR IN WHOLE WITHOUT PROPER PERMISSION AND/OR WRITTEN CONSENT FROM THE DIRECTOR GENERAL CAA-P.

AERODROME DEVELOPMENT
AND MANAGEMENT SERVICE

INFRASTRUCTURE DEVELOPMENT
AND DESIGN DIVISION

DESIGN STAFF:	INITIAL / DATE
DESIGNED BY:	IDDD
DRAWN BY:	E.V.B / L.D.
CHECKED BY:	EJDR

REVIEWED BY:

RAUL R. CRUCENA
Division Chief III, IDDD - ADMS

SUBMITTED BY:

ARNEL F. BORLADO
Department Manager III, AED-ADMS

RECOMMENDED APPROVAL:

LT COL. VALENTINO A. DIONELA, PAF (Ret)
Assistant Director General II, ADMS

APPROVED:

CAPTAIN MANUEL ANTONIO L. TAMAYO
Director General

NOTES/REVISIONS:

PROJECT:

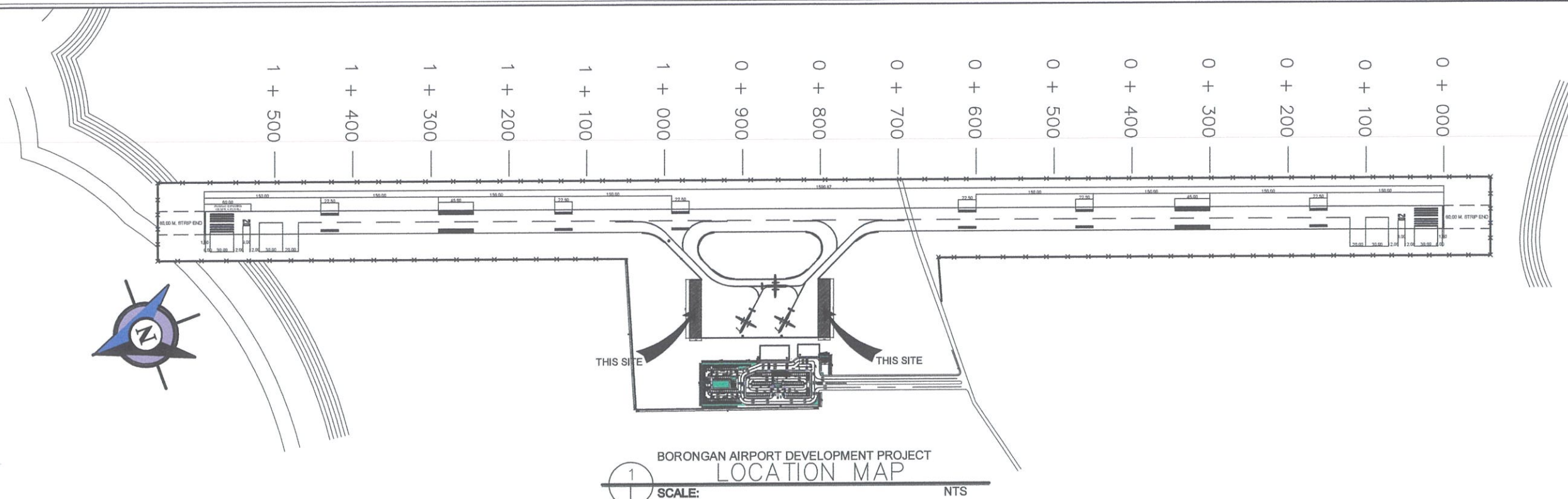
BORONGAN AIRPORT
DEVELOPMENT PROJECT
EXPANSION OF APRON

LOCATION:

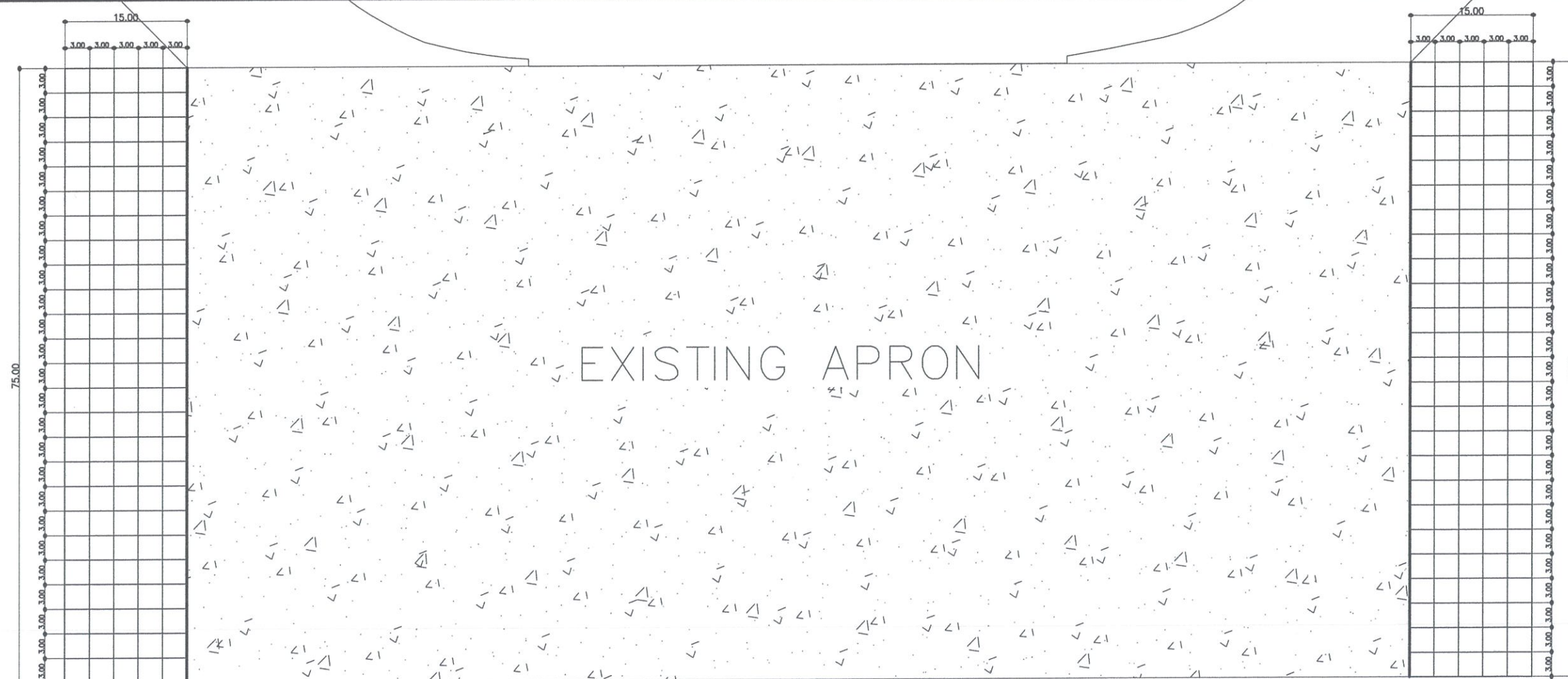
BORONGAN AIRPORT
BORONGAN

SHEET CONTENTS:

DRAWING SCALE:	SHEET NO:
AS SHOWN	02



BORONGAN AIRPORT DEVELOPMENT PROJECT
LOCATION MAP
SCALE: 1:NTS



EXPANSION OF APRON
APRON AREA BLOCKING PLAN
SCALE: 1:NTS



REPUBLIC OF THE PHILIPPINES
CIVIL AVIATION AUTHORITY OF THE PHILIPPINES
AERODROME DEVELOPMENT AND MANAGEMENT SERVICE
NAIA ROAD, 1399 PASAY CITY

THIS DRAWINGS AND DESIGN IS EXCLUSIVE
PROPERTIES OF CIVIL AVIATION AUTHORITY
OF THE PHILIPPINES AND SUCH MUST NOT BE
REPRODUCED, EXHIBITED, LOANED NOR
COPIED IN PART OR IN WHOLE WITHOUT
PROPER PERMISSION AND/OR WRITTEN
CONSENT FROM THE DIRECTOR GENERAL
CAAP.

AERODROME DEVELOPMENT
AND MANAGEMENT SERVICE

INFRASTRUCTURE DEVELOPMENT
AND DESIGN DIVISION

DESIGN STAFF:	INITIAL / DATE
DESIGNED BY:	IDDD
DRAWN BY:	E.V.B / L.D.
CHECKED BY:	E.J.D.R

REVIEWED BY:

RAUL R. GRUCENA
Division Chief III, IDDD - ADMS

SUBMITTED BY:

ARNEL F. BORLADO
Department Manager III, AED-ADMS

RECOMMENDED APPROVAL:

LT COL VALENTINO A. DIONELA, PAF (Ret)
Assistant Director General II, ADMS

APPROVED:

CAPTAIN RAVEL ANTONIO L. TAMAYO
Director General

NOTES/REVISIONS:

PROJECT:

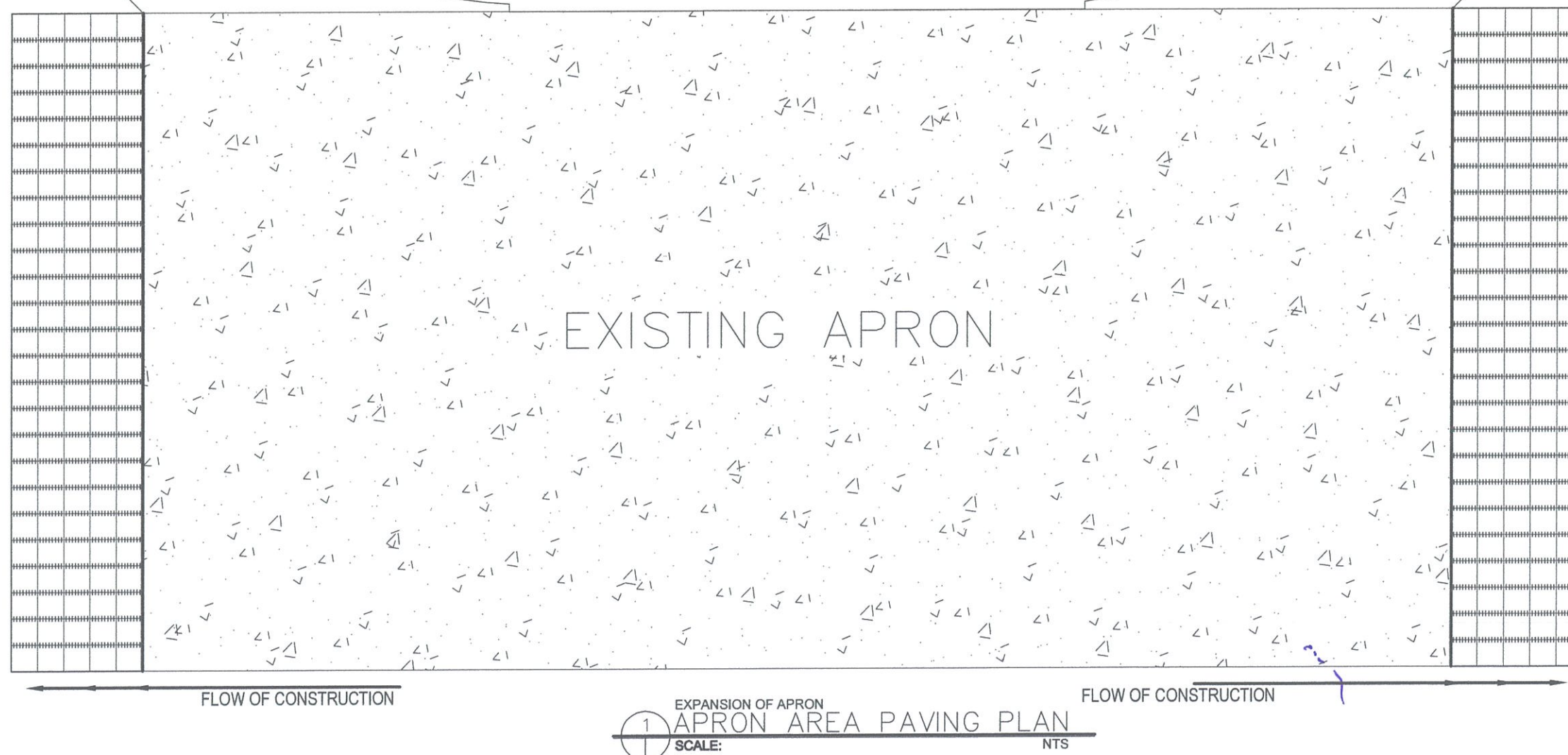
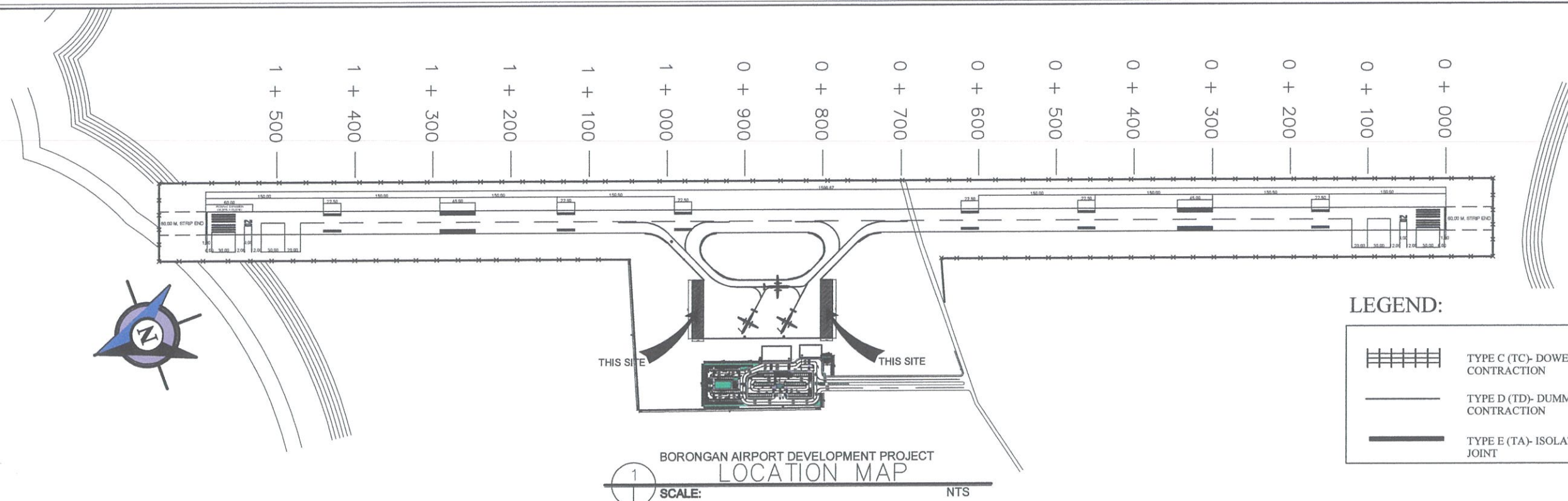
BORONGAN AIRPORT
DEVELOPMENT PROJECT
EXPANSION OF APRON

LOCATION:

BORONGAN AIRPORT
BORONGAN

SHEET CONTENTS:

DRAWING SCALE:	SHEET NO:
AS SHOWN	03





REPUBLIC OF THE PHILIPPINES
CIVIL AVIATION AUTHORITY OF THE PHILIPPINES
AERODROME DEVELOPMENT AND MANAGEMENT SERVICE
NAIA ROAD, 1300 PASAY CITY

THIS DRAWINGS AND DESIGN IS EXCLUSIVE
PROPERTIES OF CIVIL AVIATION AUTHORITY
OF THE PHILIPPINES AND SUCH MUST NOT BE
REPRODUCED, EXHIBITED, LOANED NOR
COPIED IN PART OR IN WHOLE WITHOUT
PROPER PERMISSION AND/OR WRITTEN
CONSENT FROM THE DIRECTOR GENERAL
CAAP.

AERODROME DEVELOPMENT AND
MANAGEMENT SERVICE

INFRASTRUCTURE DEVELOPMENT
AND DESIGN DIVISION

DESIGN STAFF:	INITIAL / DATE
DESIGNED BY:	IDDD
DRAWN BY:	E.V.B (jmgz27)
CHECKED BY:	E.JDJR

REVIEWED BY:

[Signature]
RAUL R. CRUCENA
Division Chief III, IDDD - ADMS

SUBMITTED BY:

[Signature]
ARNEL F. BORLADO
Department Manager III, AED-ADMS

RECOMMENDED APPROVAL:

[Signature]
LT COL VALENTINO A. DIONELA, PAF (Ret)
Assistant Director General II, ADMS

APPROVED:

[Signature]
CAPTAIN MANUEL ANTONIO L. TAMAYO
Director General

NOTES/REVISIONS:

PROJECT:

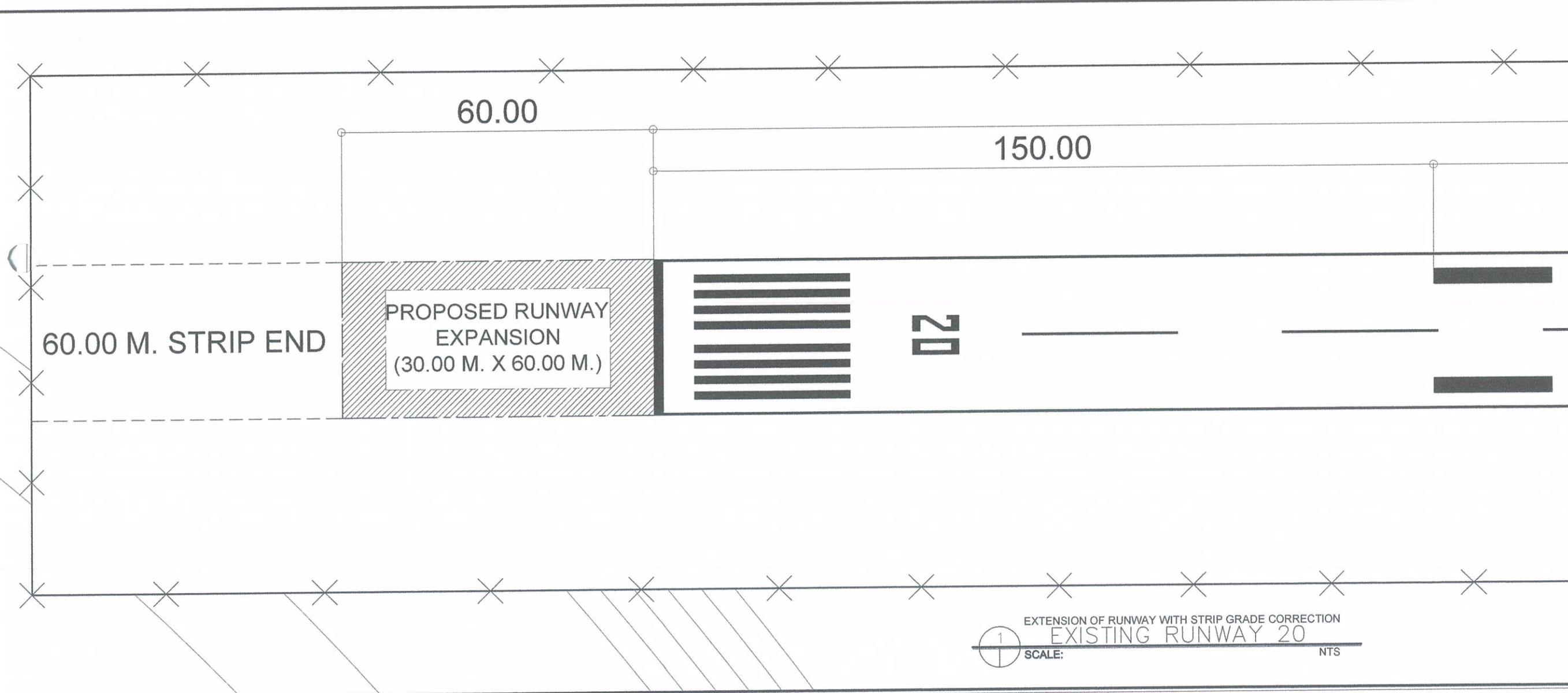
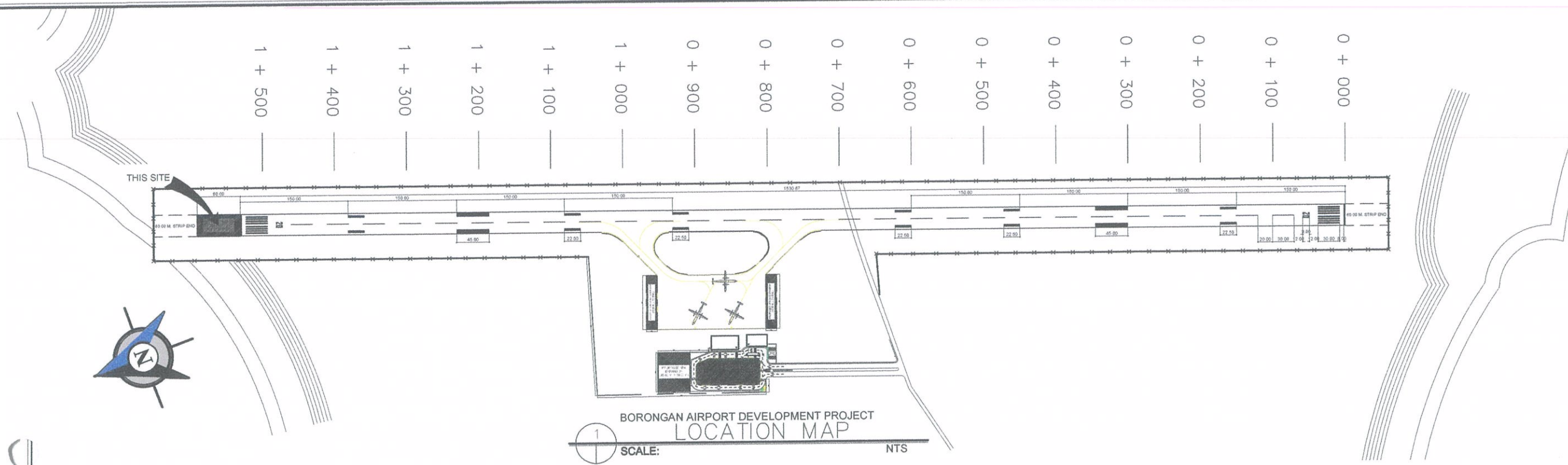
BORONGAN AIRPORT
DEVELOPMENT PROJECT
EXTENSION OF RUNWAY

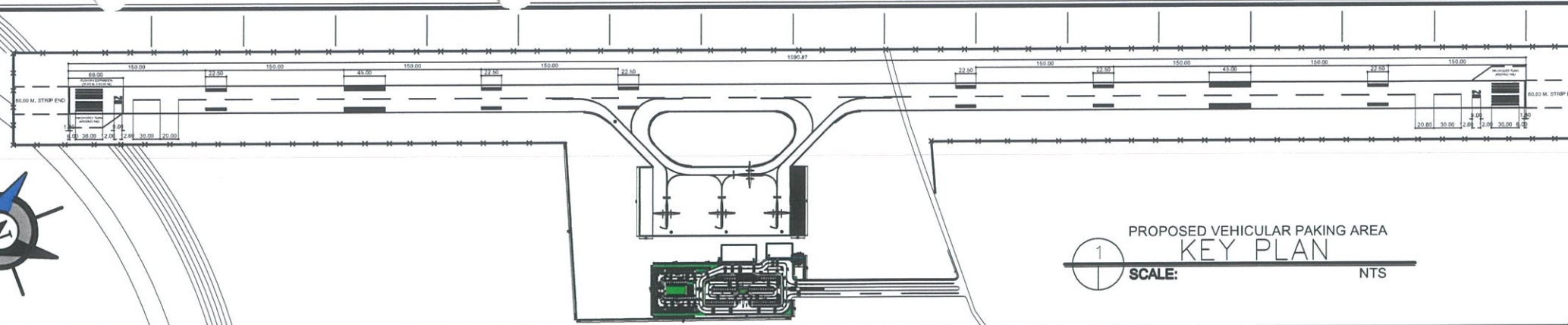
LOCATION:

BORONGAN AIRPORT
BORONGAN

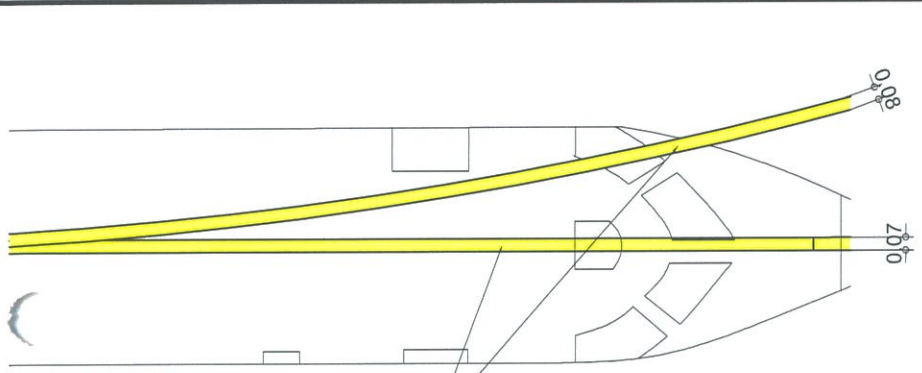
SHEET CONTENTS:

DRAWING SCALE:	SHEET NO:
AS SHOWN	04



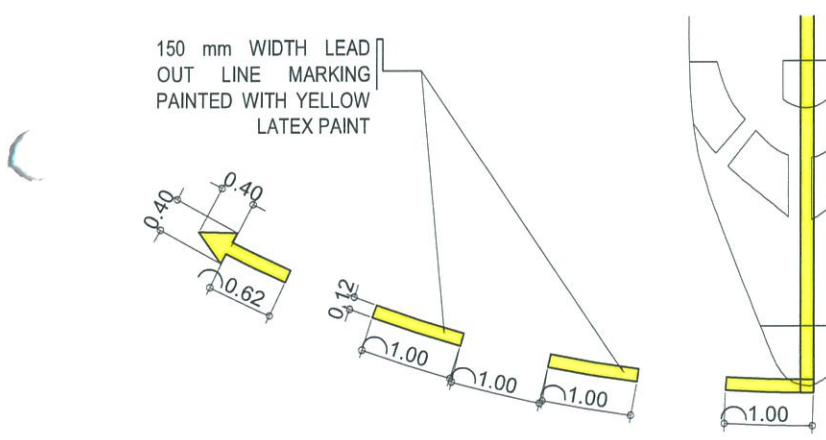


PROPOSED VEHICULAR PARKING AREA
KEY PLAN
SCALE: NTS



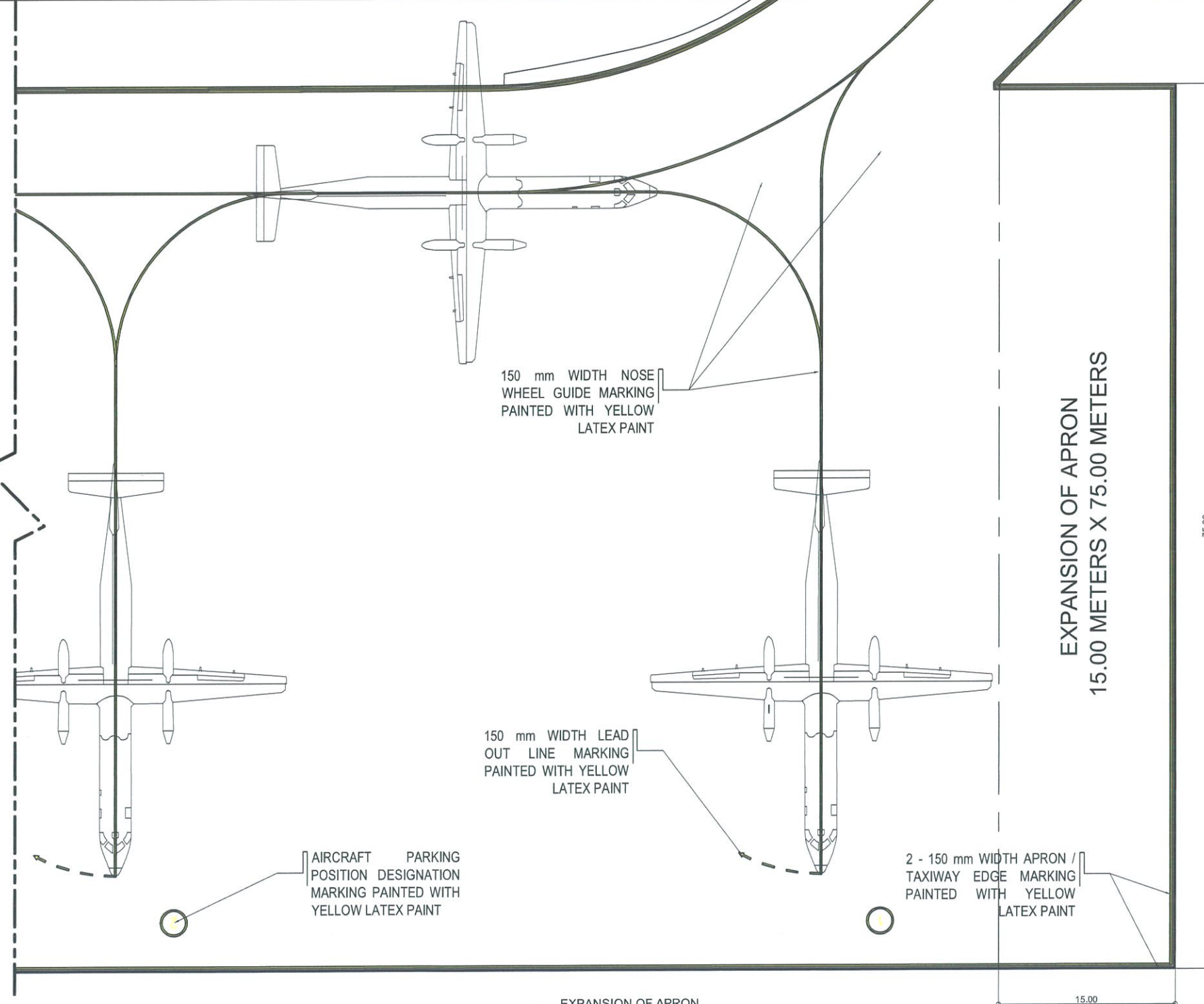
150 mm WIDTH NOSE
WHEEL GUIDE MARKING
PAINTED WITH YELLOW
LATEX PAINT

NOSE WHEEL GUIDE MARKING
BLOW-UP DETAIL



150 mm WIDTH LEAD
OUT LINE MARKING
PAINTED WITH YELLOW
LATEX PAINT

LEAD OUT LINE MARKING
BLOW-UP DETAIL



150 mm WIDTH NOSE
WHEEL GUIDE MARKING
PAINTED WITH YELLOW
LATEX PAINT

150 mm WIDTH LEAD
OUT LINE MARKING
PAINTED WITH YELLOW
LATEX PAINT

AIRCRAFT PARKING
POSITION DESIGNATION
MARKING PAINTED WITH
YELLOW LATEX PAINT

2 - 150 mm WIDTH APRON /
TAXIWAY EDGE MARKING
PAINTED WITH YELLOW
LATEX PAINT

EXPANSION OF APRON
15.00 METERS X 75.00 METERS

EXPANSION OF APRON
BLOW-UP APRON MARKING
SCALE: 1:50 MTRS

EXPANSION OF APRON
DETAILED B PLAN
SCALE: 1:250 MTRS



REPUBLIC OF THE PHILIPPINES
CIVIL AVIATION AUTHORITY OF THE PHILIPPINES
AERODROME DEVELOPMENT AND MANAGEMENT SERVICE
NAIA ROAD, 1300 PASAY CITY

THIS DRAWINGS AND DESIGN IS EXCLUSIVE
PROPERTIES OF CIVIL AVIATION AUTHORITY
OF THE PHILIPPINES AND SUCH MUST NOT BE
REPRODUCED, EXHIBITED, LOANED NOR
COPIED IN PART OR IN WHOLE WITHOUT
PROPER PERMISSION AND/OR WRITTEN
CONSENT FROM THE DIRECTOR GENERAL
CAAP.

AERODROME DEVELOPMENT
AND MANAGEMENT SERVICE

INFRASTRUCTURE DEVELOPMENT
AND DESIGN DIVISION

DESIGN STAFF:	INITIAL / DATE
DESIGNED BY:	IDDD
DRAWN BY:	E.V.B. (janz27)
CHECKED BY:	E.JDJR

REVIEWED BY:

RAUL R. CRUCENA
Division Chief III, IDDD-ADMS

SUBMITTED BY:

ARNEL F. BORLADO
Department Manager III, AED-ADMS

RECOMMENDED APPROVAL:

LT COL. VALENTINO A. DIONELA, PAF (Ret)
Assistant Director General II, ADMS

APPROVED:

CAPTAIN MARCOS ANTONIO L. TAMAYO
Director General

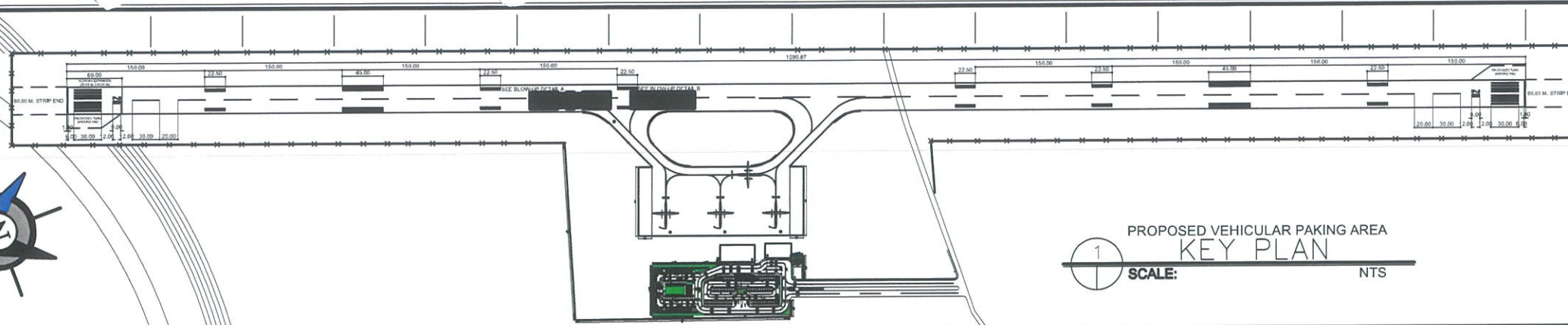
NOTES/REVISIONS:

PROJECT:
BORONGAN AIRPORT
DEVELOPMENT PROJECT
EXPANSION OF APRON

LOCATION:
BORONGAN AIRPORT
BORONGAN

SHEET CONTENTS:

DRAWING SCALE:	SHEET NO.
AS SHOWN	03



CIVIL AVIATION AUTHORITY OF THE PHILIPPINES
AERODROME DEVELOPMENT AND MANAGEMENT SERVICE
NAIA ROAD, 1300 PASAY CITY

THIS DRAWINGS AND DESIGN IS EXCLUSIVE PROPERTIES OF **CIVIL AVIATION AUTHORITY OF THE PHILIPPINES** AND SUCH MUST NOT BE REPRODUCED, EXHIBITED, LOANED NOR COPIED IN PART OR IN WHOLE WITHOUT PROPER PERMISSION AND/OR WRITTEN CONSENT FROM THE DIRECTOR GENERAL CAAP.

INFRASTRUCTURE DEVELOPMENT
AND DESIGN DIVISION

DESIGNED BY:	IDDD	11
--------------	------	----

DESIGNED BY:	IDDD	

CHECKED BY:	EJDJR	
-------------	-------	--


REVIEWED BY:

RAUL R. CRUCENA
Division Chief III, IDDD - ADMS

SUBMITTED BY: 11

ARNEL F. BORLADO
Department Manager III, AED-ADMS

RECOMMENDED APPROVAL:


LT COL VALENTINO A DIONELA, PAF (Ret)
Assistant Director General II, ADMS

APPROVED: _____

CAPTAIN MANUEL ANTONIO L. TAMAYO
Director General

NOTES/REVISIONS:

PROJECT:
BORONGAN AIRPORT
DEVELOPMENT PROJECT

LOCATION:
BORONGAN AIRPORT
BORONGAN

SHEET CONTENTS:

DRAWING SCALE:	SHEET NO:
----------------	-----------

AS SHOWN

	09	
--	----	--

09

450 mm WIDTH x 30,000
mm LENGTH RUNWAY
CENTERLINE MARKING
PAINTED WITH WHITE
LATEX PAINT

150 mm WIDTH TAXI GUIDELINE
MARKING MEETING RUNWAY
CENTERLINE MARKING
PAINTED WITH YELLOW LATEX
PAINT

2 - 150 mm WIDTH APRON /
TAXIWAY EDGE MARKING
PAINTED WITH YELLOW
LATEX PAINT

— RUNWAY TOUCHDOWN
ZONE (SEE DETAILS ON
RUNWAY MARKINGS)

150 mm WIDTH TAXI GUIDELINE
MARKING MEETING RUNWAY
CENTERLINE MARKING
PAINTED WITH YELLOW LATEX
PAINT

2 - 150 mm WIDTH APRON /
TAXIWAY EDGE MARKING
PAINTED WITH YELLOW
LATEX PAINT

450 mm WIDTH x 30,000
mm LENGTH RUNWAY
CENTERLINE MARKING
PAINTED WITH WHITE
LATEX PAINT

0.45
0.15

150 mm WIDTH TAXI GUIDELINE
MARKING MEETING RUNWAY
CENTERLINE MARKING
PAINTED WITH YELLOW LATEX
PAINT

BLOW-UP DETAIL "A"

TAXI GUIDELINE MARKING
MEETING RUNWAY CENTERLINE MARKING
TO RUNWAY 20

450 mm WIDTH x 30,000
mm LENGTH RUNWAY
CENTERLINE MARKING
PAINTED WITH WHITE
LATEX PAINT

0.45

150 mm WIDTH TAXI GUIDELINE
MARKING MEETING RUNWAY
CENTERLINE MARKING
PAINTED WITH YELLOW LATEX
PAINT

BLOW-UP DETAIL "B"

TAXI GUIDELINE MARKING
MEETING RUNWAY CENTERLINE MARKING
TO RUNWAY 02

NORTHEAST TAXI GUIDELINE MARKING MEETING RUNWAY CENTERLINE

APRON MARKING DETAIL

SCALE: 1:100 MTRS

1:100 MTRS



REPUBLIC OF THE PHILIPPINES
CIVIL AVIATION AUTHORITY OF THE PHILIPPINES
AERODROME DEVELOPMENT AND MANAGEMENT SERVICE
NAIA ROAD, 1300 PASAY CITY

THIS DRAWINGS AND DESIGN IS EXCLUSIVE PROPERTIES OF **CIVIL AVIATION AUTHORITY OF THE PHILIPPINES** AND SUCH MUST NOT BE REPRODUCED, EXHIBITED, LOANED NOR COPIED IN PART OR IN WHOLE WITHOUT PROPER PERMISSION AND/OR WRITTEN CONSENT FROM THE DIRECTOR GENERAL CAAP.

AERODROME DEVELOPMENT
AND MANAGEMENT SERVICE

INFRASTRUCTURE DEVELOPMENT
AND DESIGN DIVISION

DESIGN STAFF:	INITIAL / DATE
---------------	----------------

DESIGNED BY:	IDDD	
--------------	------	--

<u>DRAWN BY:</u>	E.V.B (jangz27)
<u>CHECKED BY:</u>	EJDJR

CHECKED BY:	EJDR	
-------------	------	---

--	--	--

REVIEWED BY:


RAUL R. CRUCENA
Division Chief III, IDDD - ADM3

SUBMITTED BY:

ARNEL F. BORLADO
Department Manager III, AED-AD

RECOMMENDED APPROVAL:

LT COL VALENTINO A DIONELA, PAF (Ret)
Assistant Director General II, ADMS

APPROVED:


CAPTAIN MANUEL ANTONIO L. TAMAYO
Director General

NOTES/REVISIONS:

PROJECT:
BORONGAN AIRPORT
DEVELOPMENT PROJECT

LOCATION:
BORONGAN AIRPORT
BORONGAN

SHEET CONTENTS:

DRAWING SCALE:	SHEET NO:
----------------	-----------

AS SHOWN		
----------	--	--

AS SHOWN		
	10	



450 mm WIDTH x 30,000
mm LENGTH RUNWAY
CENTERLINE MARKING
PAINTED WITH WHITE
LATEX PAINT

150 mm WIDTH TAXI GUIDELINE
MARKING MEETING RUNWAY
CENTERLINE MARKING
PAINTED WITH YELLOW LATEX
PAINT

2 - 150 mm WIDTH APRON / TAXIWAY EDGE MARKING PAINTED WITH YELLOW LATEX PAINT

2 - 150 mm WIDTH APRON /
TAXIWAY EDGE MARKING
PAINTED WITH YELLOW
LATEX PAINT

150 mm WIDTH TAXI GUIDELINE
MARKING MEETING RUNWAY
CENTERLINE MARKING
PAINTED WITH YELLOW LATEX
PAINT

450 mm WIDTH x 30,000
mm LENGTH RUNWAY
CENTERLINE MARKING
PAINTED WITH WHITE
LATEX PAINT

150 mm WIDTH TAXI GUIDELINE
MARKING MEETING RUNWAY
CENTERLINE MARKING
PAINTED WITH YELLOW LATEX
PAINT

TAXI GUIDELINE MARKING
MEETING RUNWAY CENTERLINE MARKING
TO RUNWAY 20

450 mm WIDTH x 30,000
mm LENGTH RUNWAY
CENTERLINE MARKING
PAINTED WITH WHITE
LATEX PAINT

150 mm WIDTH TAXI GUIDELINE
MARKING MEETING RUNWAY
CENTERLINE MARKING
PAINTED WITH YELLOW LATEX
PAINT

BLOW-UP DETAIL "D"

TAXI GUIDELINE MARKING
MEETING RUNWAY CENTERLINE MARKING
TO RUNWAY 02

SOUTHWEST TAXI GUIDELINE MARKING MEETING RUNWAY CENTERLINE

APRON MARKING DETAIL

SCALE: 1:100 MTRS



REPUBLIC OF THE PHILIPPINES
CIVIL AVIATION AUTHORITY OF THE PHILIPPINES
AERODROME DEVELOPMENT AND MANAGEMENT SERVICE
NAIA ROAD, 1500 PASAY CITY

THIS DRAWINGS AND DESIGN IS EXCLUSIVE
PROPERTIES OF CIVIL AVIATION AUTHORITY
OF THE PHILIPPINES AND SUCH MUST NOT BE
REPRODUCED, EXHIBITED, LOANED NOR
COPIED IN PART OR IN WHOLE WITHOUT
PROPER PERMISSION AND/OR WRITTEN
CONSENT FROM THE DIRECTOR GENERAL
CAAP

AERODROME DEVELOPMENT
AND MANAGEMENT SERVICE

INFRASTRUCTURE DEVELOPMENT
AND DESIGN DIVISION

DESIGN STAFF:	INITIAL / DATE
DESIGNED BY:	IDDD
DRAWN BY:	E.V.B. (jengz27)
CHECKED BY:	EJDR

REVIEWED BY:

RAUL R. CRUCENA
Division Chief III, IDDD - ADMS

SUBMITTED BY:

ARNEL F. BORLADO
Department Manager III, AED-ADMS

RECOMMENDED APPROVAL:

LT COL VALENTINO A. DIONELA, PAF (Ret)
Assistant Director General II, ADMS

APPROVED:

CAPTAIN MAHIL E. ANTONIO L. TAMAYO
Director General

NOTES/REVISIONS:

PROJECT:

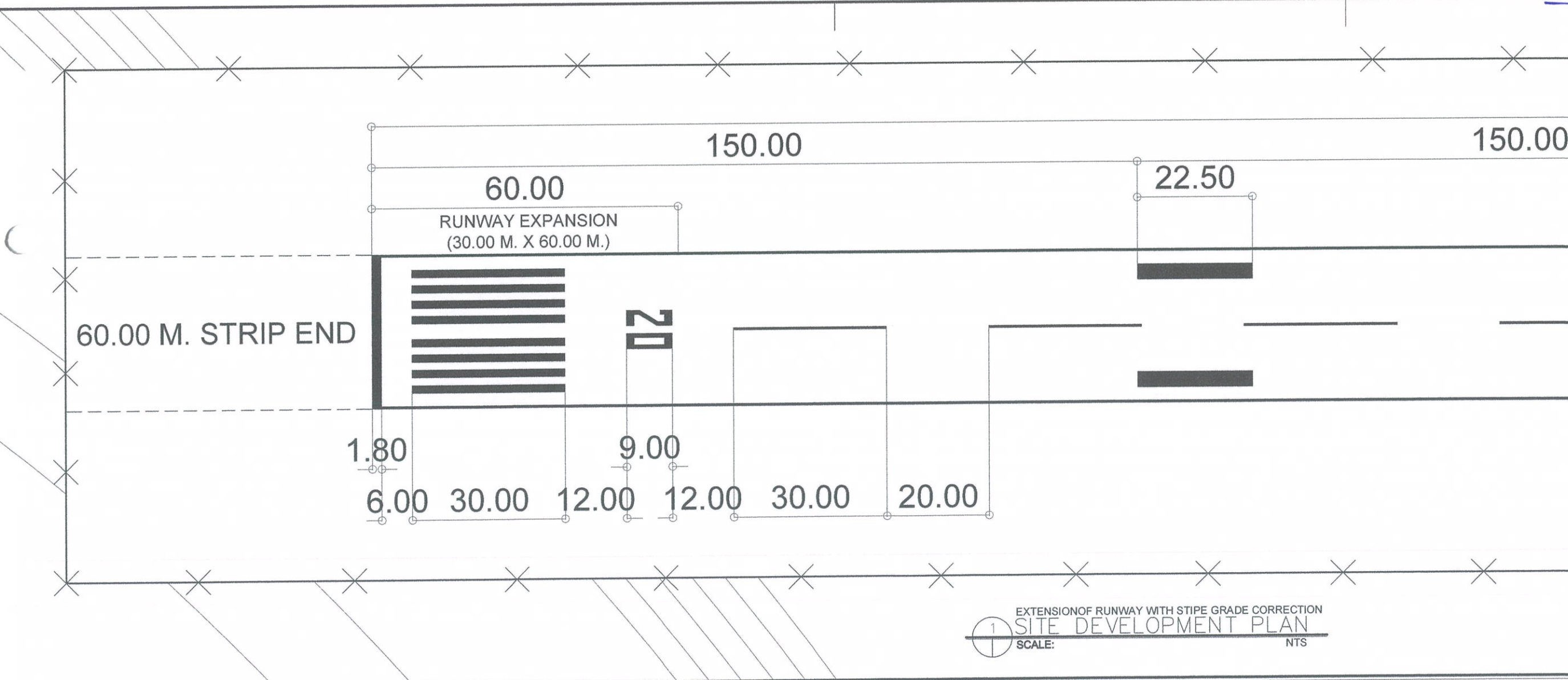
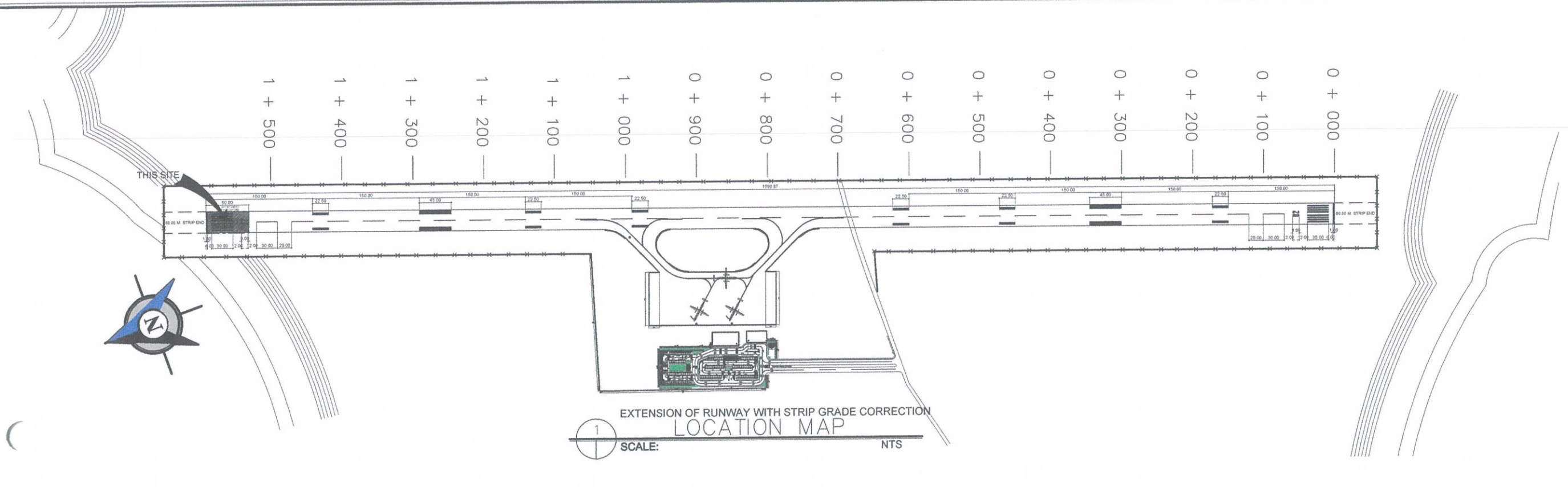
BORONGAN AIRPORT
DEVELOPMENT PROJECT
EXTENSION OF RUNWAY

LOCATION:

BORONGAN AIRPORT
BORONGAN

SHEET CONTENTS:

DRAWING SCALE:	SHEET NO:
AS SHOWN	12





REPUBLIC OF THE PHILIPPINES

CIVIL AVIATION AUTHORITY OF THE PHILIPPINES
AERODROME DEVELOPMENT AND MANAGEMENT SERVICE
NAIA ROAD, 1300 PASAY CITY

THIS DRAWING AND DESIGN IS EXCLUSIVE
PROPERTY OF CIVIL AVIATION AUTHORITY
OF THE PHILIPPINES AND SUCH MUST NOT BE
REPRODUCED, EXHIBITED, LOANED NOR
COPIED IN PART OR IN WHOLE WITHOUT
PROPER PERMISSION AND/OR WRITTEN
CONSENT FROM THE DIRECTOR GENERAL
CAAP.

AERODROME DEVELOPMENT
AND MANAGEMENT SERVICE

INFRASTRUCTURE DEVELOPMENT
AND DESIGN DIVISION

DESIGN STAFF:	INITIAL / DATE
DESIGNED BY:	IDDD
DRAWN BY:	E.V.B (jangz27)
CHECKED BY:	EJDR

REVIEWED BY:

RAUL R. CRUCENA
Division Chief III, IDDD - ADMS

SUBMITTED BY:

ARNEL F. BORLADO
Department Manager III, AED-ADMS

RECOMMENDED APPROVAL:

LT COL VALENTINO A. DIONELA, PAF (Ret)
Assistant Director General II, ADMS

APPROVED:

CAPTAIN MANUEL ANTONIO L. TAMAYO
Director General

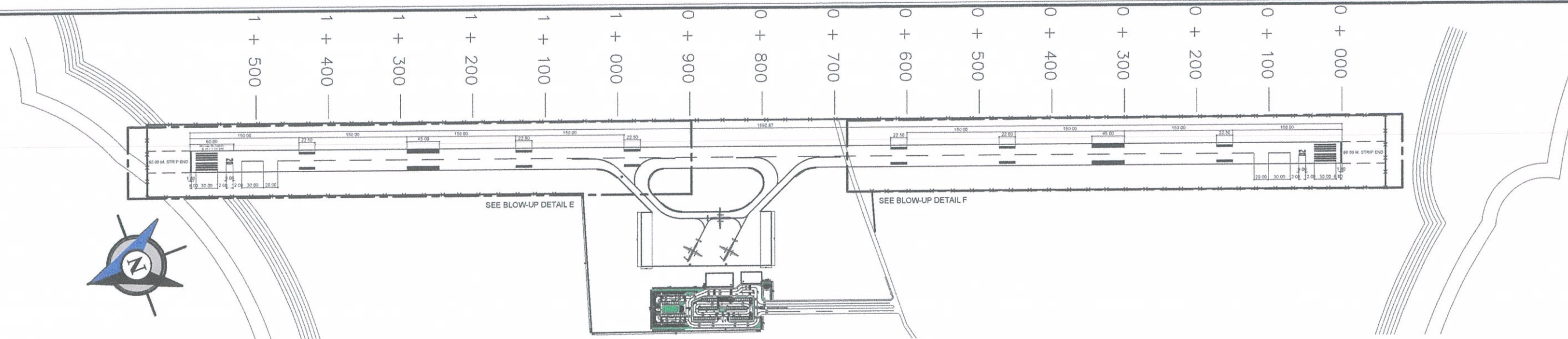
NOTES/REVISIONS:

PROJECT:
BORONGAN AIRPORT
DEVELOPMENT PROJECT
EXTENSION OF RUNWAY WITH STRIP
GRADE CORRECTION

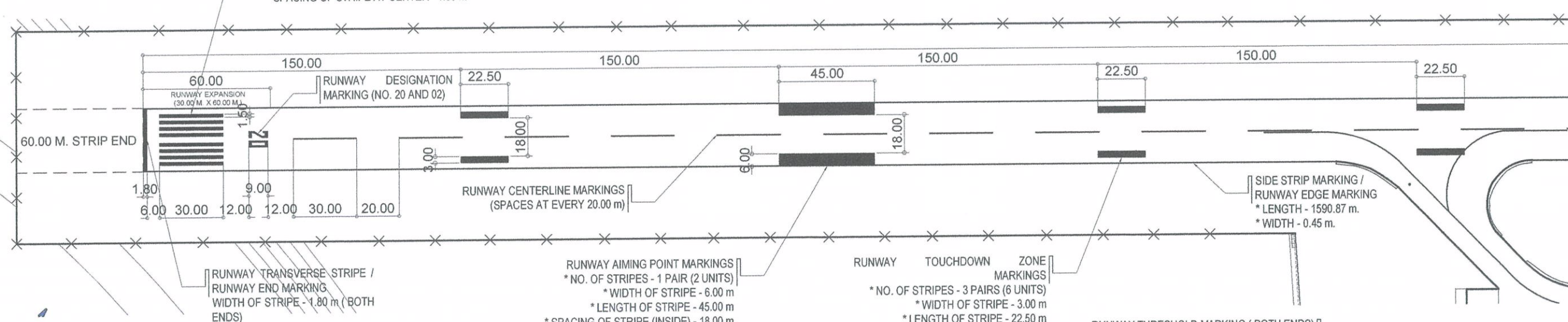
LOCATION:
BORONGAN AIRPORT
BORONGAN

SHEET CONTENTS:

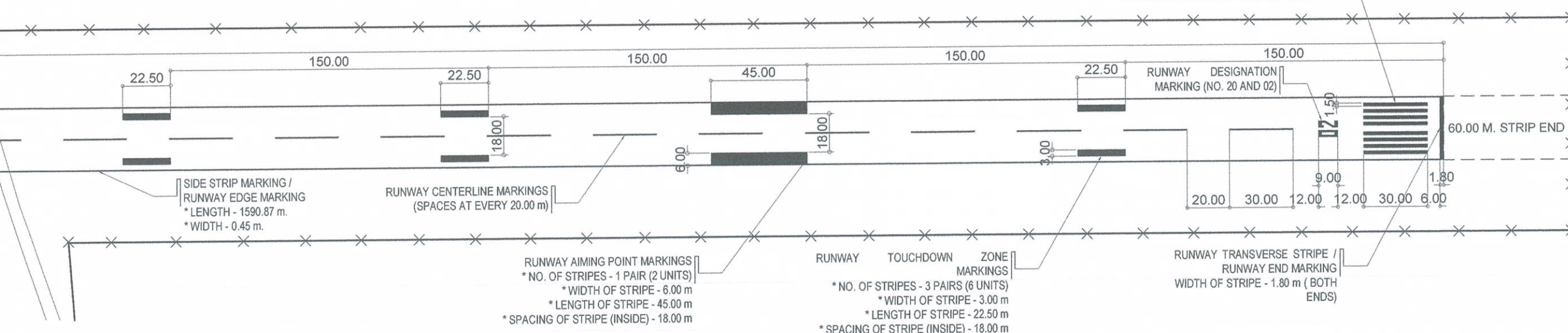
DRAWING SCALE:	SHEET NO:
AS SHOWN	13



RUNWAY THRESHOLD MARKING (BOTH ENDS)
* WIDTH OF STRIPE - 1.80 m
* LENGTH OF STRIPE - 1.80 m
* SPACING OF STRIPE - 1.80 m
* SPACING OF STRIPE AT CENTER - 1.80 m

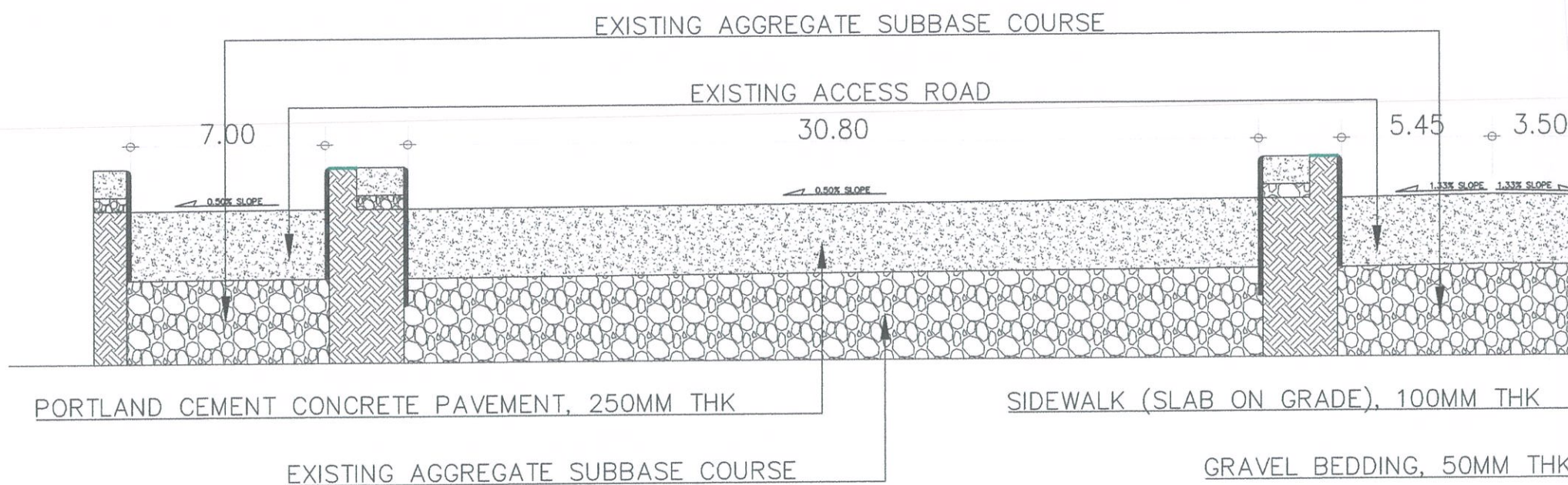


BLOW-UP DETAIL "E"



BLOW-UP DETAIL "F"

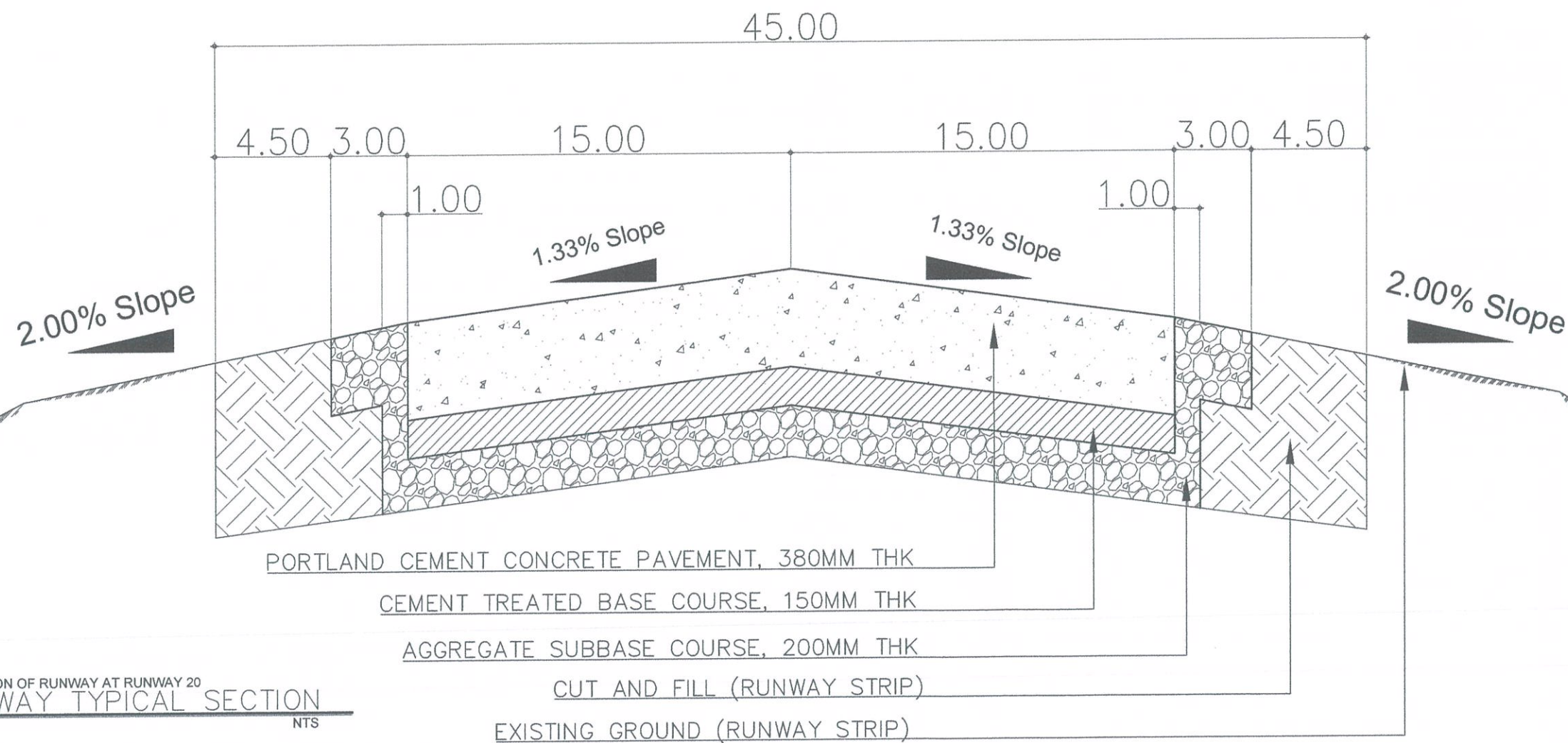
EXPANSION OF APRON
AIRPORT RUNWAY MARKINGS
SCALE: 1:1250 MTRS



COMPLETION OF VEHICULAR PARKING AREA

VEHICULAR PARKING TYPICAL SECTION

SCALE: NTS



EXTENSION OF RUNWAY AT RUNWAY 20

RUNWAY TYPICAL SECTION

SCALE: NTS

RECOMMENDED:	
APPROVED:	<p>LT COL VALENTINO A. DI</p> <p>Assistant Director Gen</p>
NOTES/REVISIONS:	<p>CAPTAIN MANUEL A. DI</p> <p>Director Gen</p>
PROJECT:	BORONGAN / DEVELOPMENT
LOCATION:	BORONGAN A BORONGAN
SHEET CONTENTS:	<p>VPA TYPICAL SECTION</p> <p>RUNWAY TYPICAL SECTION</p>
DRAWING SCALE:	SH
AS SHOWN	1



REPUBLIC OF THE PHILIPPINES
CIVIL AVIATION AUTHORITY OF THE PHILIPPINES
AERODROME DEVELOPMENT AND MANAGEMENT SERVICE
NAIA ROAD, 1200 PASAY CITY

THIS DRAWING AND DESIGN IS EXCLUSIVE
PROPERTY OF CIVIL AVIATION AUTHORITY
OF THE PHILIPPINES AND SUCH MUST NOT BE
REPRODUCED, EXHIBITED, LOANED NOR
COPIED IN PART OR IN WHOLE WITHOUT
PROPER PERMISSION AND/OR WRITTEN
CONSENT FROM THE DIRECTOR GENERAL
CAAP.

AERODROME DEVELOPMENT
AND MANAGEMENT SERVICE

INFRASTRUCTURE DEVELOPMENT
AND DESIGN DIVISION

DESIGN STAFF:	INITIAL / DATE
DESIGNED BY:	IDDD
DRAWN BY:	E.V.B / L.D.
CHECKED BY:	EJDJR

REVIEWED BY:

RAUL R. CRUZENA
Division Chief III, IDDD - ADMS

SUBMITTED BY:

ARNEL F. BORLADO
Department Manager II, AED-ADMS

RECOMMENDED APPROVAL:

LT COL. VALENTINO A. DIONELA, PAF (Ret.)
Assistant Director General II, ADMS

APPROVED:

CAPTAIN MANUEL ANTONIO L. TAMAYO
Director General

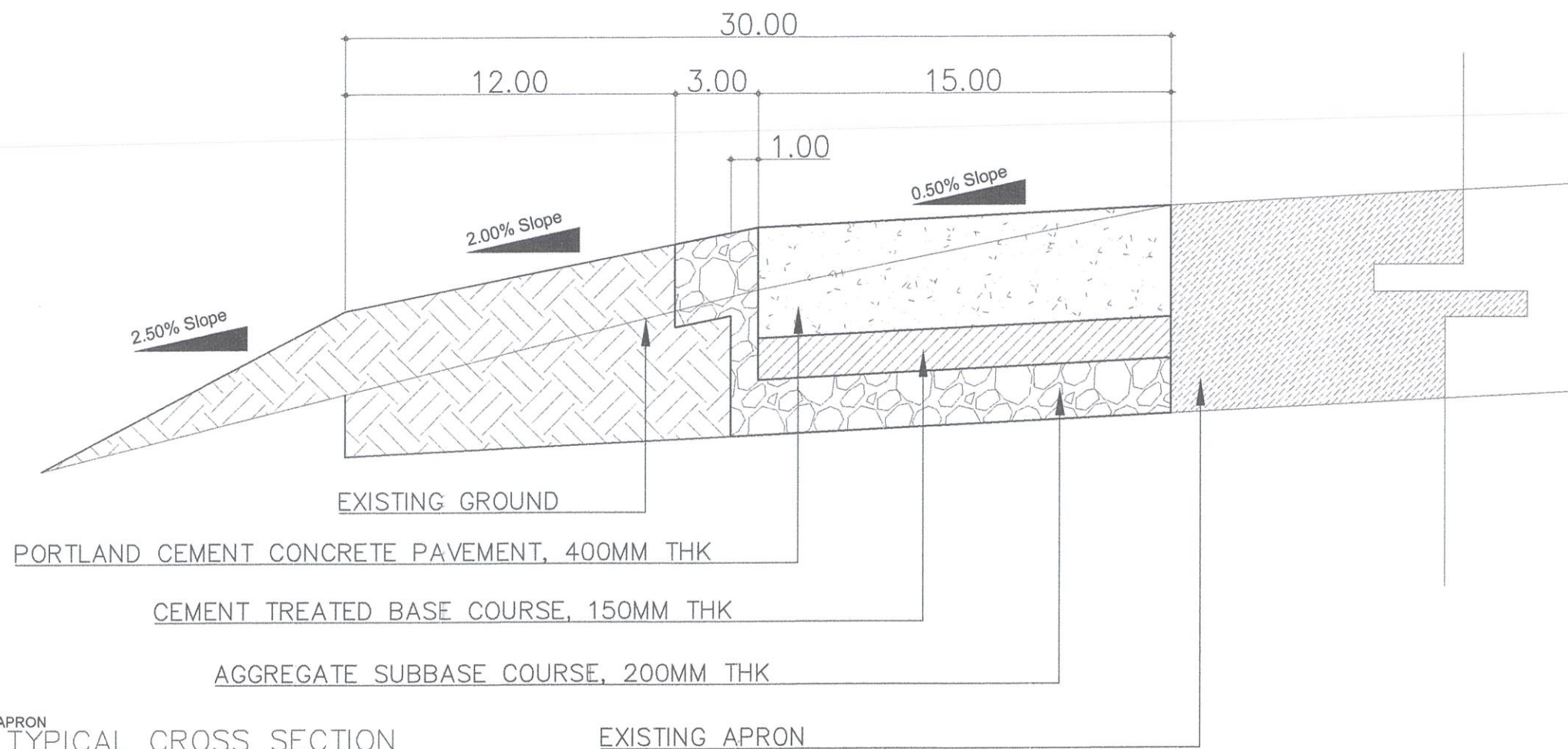
NOTES/REVISIONS:

PROJECT:
BORONGAN AIRPORT
DEVELOPMENT PROJECT

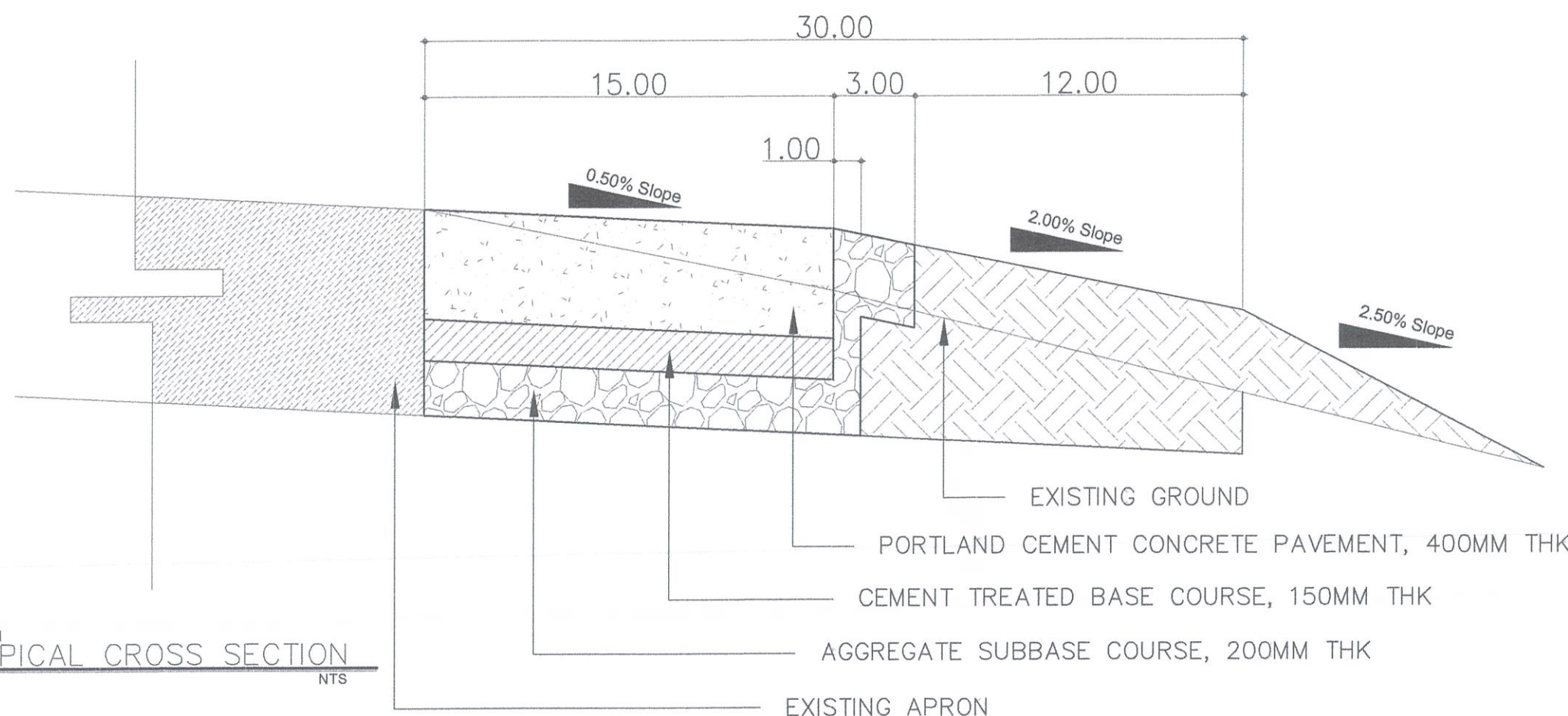
LOCATION:
BORONGAN AIRPORT
BORONGAN

SHEET CONTENTS:
APRON TYPICAL SECTION

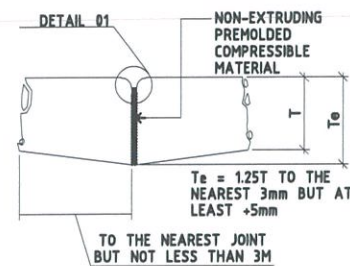
DRAWING SCALE:	SHEET NO.
AS SHOWN	16



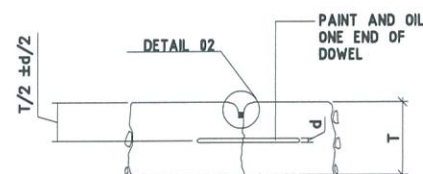
EXPANSION OF APRON
1 APRON TYPICAL CROSS SECTION
SCALE: NTS



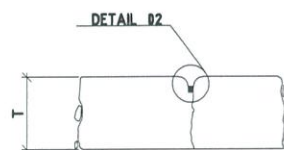
EXPANSION OF APRON
2 APRON TYPICAL CROSS SECTION
SCALE: NTS



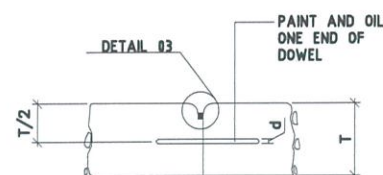
TYPE A (TA) - THICKENED EDGE
(ISOLATION JOINT)



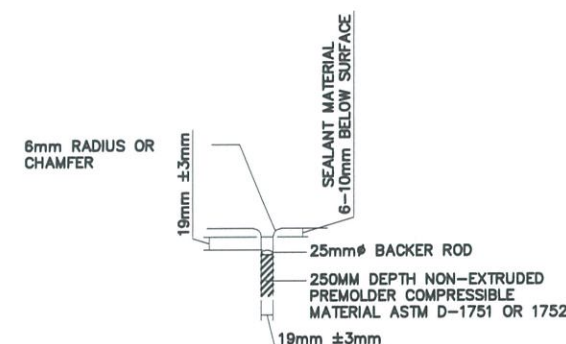
TYPE C (TC) - DOWELED CONTRACTION



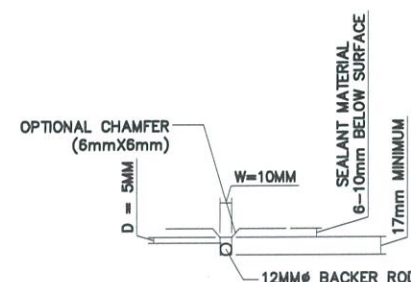
TYPE D (TD) - DUMMY CONTRACTION



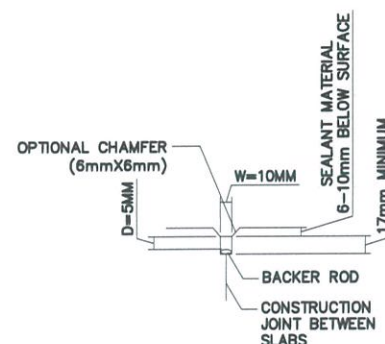
TYPE E (TE) - DOWELED CONSTRUCTION



DETAIL 01



DETAIL 02

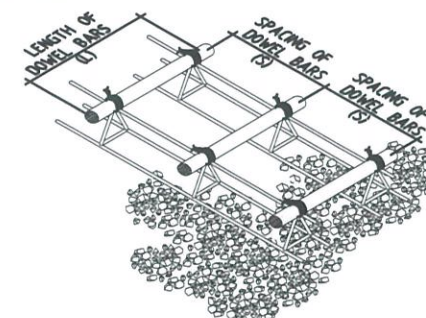


DETAIL 03

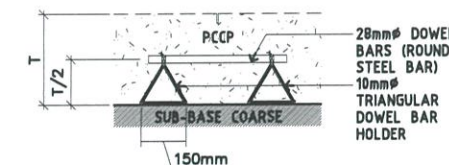


NOTES:

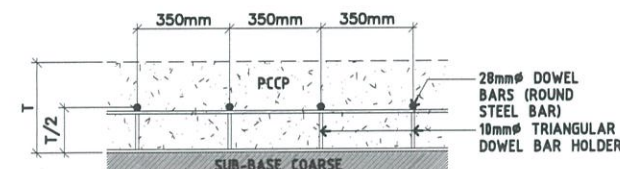
1. ALL STEEL DOWELS SHALL BE SUPPORTED AND HELD IN PLACE IN AN APPROVED ASSEMBLY.
2. ALL STEEL DOWELS SHALL BE OF GRADE 60 (60,000 psi / 414 MPa).
3. ALL FORMED JOINTS SHALL BE FINISHED WITH RADIUS OF 6mm OR 13mm.
4. ALL GROOVES OF CONTRACTION JOINTS SHALL BE SAWED WITHIN 24 HOURS.
5. WHERE PAVING OPERATIONS ARE DELAYED OR STOPPED, PROVIDE DOWELED CONSTRUCTION JOINT.
6. CONCRETE BLOCKING SHALL BE 3.0m BY 3.0m, UNLESS OTHERWISE GOVERNED BY ABUTTING EDGE.
7. ALL PAVING JOINTS SHALL BE FILLED WITH JOINT SEALANT AS SPECIFIED.
8. PROVIDE PIN HOLDERS EVERY 1.5M AT TRANSVERSE JOINTS



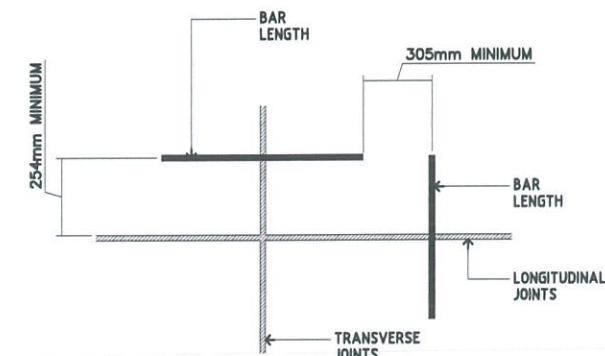
ISOMETRIC



ISOMETRIC



SECTION



POSITION OF DOWELS
AT EDGE OF JOINT



DIMENSIONS AND SPACING OF STEEL DOWELS					
PAVEMENT THICKNESS	DOWELS				
	CONTRACTION JOINTS			CONSTRUCTION JOINTS	
	DIAMETER Ø	LENGTH	SPACING	DIAMETER Ø	LENGTH
12.5-18 in (318-406 mm)	28 mm	500 mm	350 mm	28 mm	500 mm

REPUBLIC OF THE PHILIPPINES
CIVIL AVIATION AUTHORITY OF THE PHILIPPINES
AERODROME DEVELOPMENT AND MANAGEMENT SERVICE
NAIA ROAD, 1350 PASAY CITY

THIS DRAWINGS AND DESIGN IS EXCLUSIVE PROPERTIES OF CIVIL AVIATION AUTHORITY OF THE PHILIPPINES AND SUCH MUST NOT BE REPRODUCED, EXHIBITED, LOANED NOR COPIED IN PART OR IN WHOLE WITHOUT PROPER PERMISSION AND/OR WRITTEN CONSENT FROM THE DIRECTOR GENERAL CAAP.

AERODROME DEVELOPMENT
AND MANAGEMENT SERVICE

INFRASTRUCTURE DEVELOPMENT
AND DESIGN DIVISION

DESIGN STAFF:	INITIAL / DATE
DESIGNED BY:	IDDD
DRAWN BY:	E.V.B / L.D.
CHECKED BY:	E.J.D.R.

REVIEWED BY:
RAUL R. CRUCENA
Division Chief III, IDPD - ADMS

SUBMITTED BY:
ARNEL F. BORLADO
Department Manager III, AED-ADMS

RECOMMENDED APPROVAL:
LT COL VALENTINO A. DIONELA, PAF (R-1)
Assistant Director General II, ADMS

APPROVED:
CAPTAIN MANUEL ANTONIO L. TAMAYO
Director General

NOTES/REVISIONS:

PROJECT:
BORONGAN AIRPORT
DEVELOPMENT PROJECT

LOCATION:
BORONGAN AIRPORT
BORONGAN

SHEET CONTENTS:
APRON AND RUNWAY
JOINT DETAILS

DRAWING SCALE: AS SHOWN
SHEET NO. F