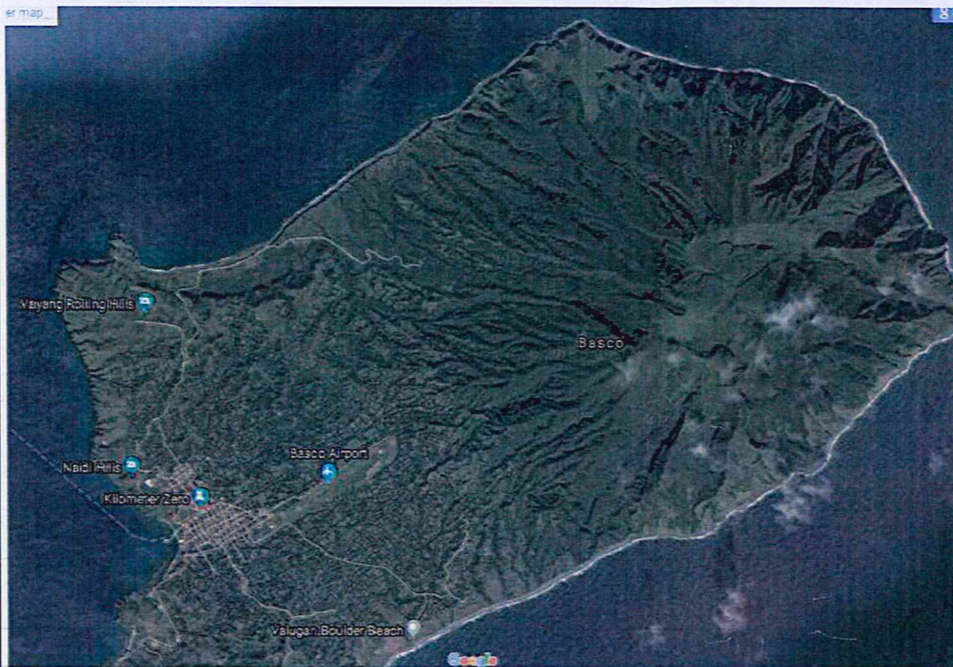
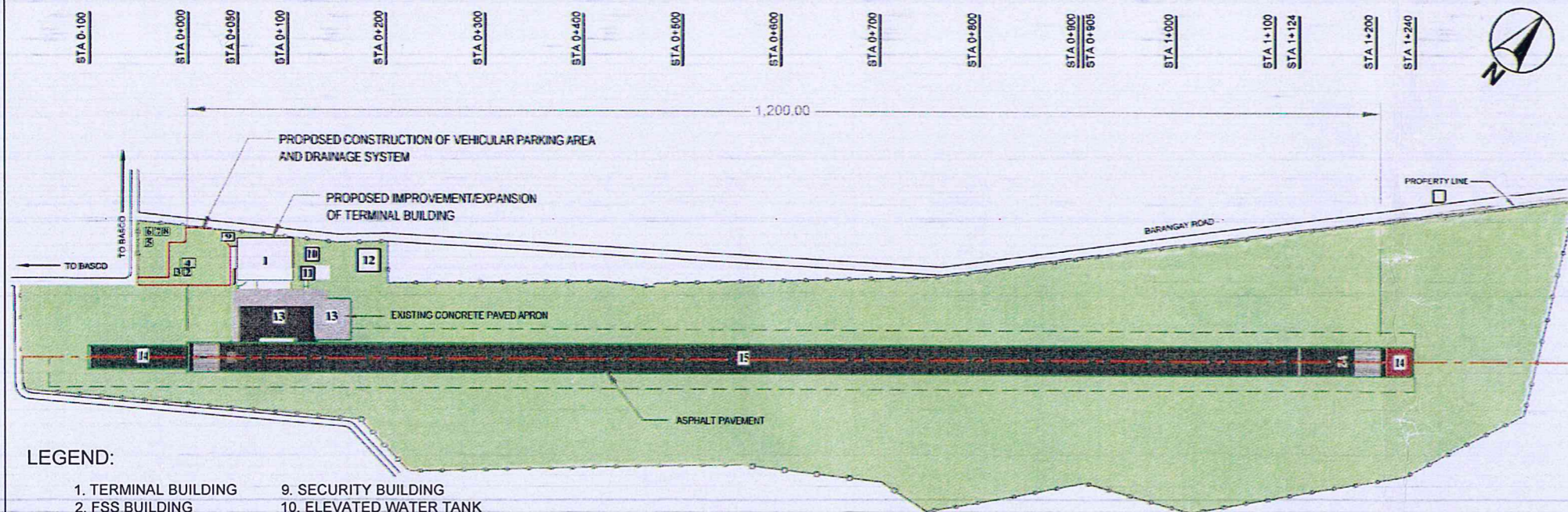




1  
A-01 A-01  
REHABILITATION OF POWER HOUSE  
EXTERIOR PERSPECTIVE  
SCALE: NTS.



2  
A-01 A-01  
REHABILITATION OF POWER HOUSE  
VICINITY MAP  
SCALE: NTS.



LEGEND:

1. TERMINAL BUILDING
2. FSS BUILDING
3. ADMIN BUILDING
4. FSS BUILDING PHASE 2
5. NEW POWER HOUSE
6. OLD POWER HOUSE
7. GUEST HOUSE
8. WAREHOUSE
9. SECURITY BUILDING
10. ELEVATED WATER TANK
11. FIRE STATION BUILDING
12. PROPOSED GUEST HOUSE 2
13. CONCRETE PAVE APRON
14. STOPWAY END
15. EXISTING RUNWAY (ASPHALT)

3  
A-01 A-01  
REHABILITATION OF POWER HOUSE  
AIRPORT PROFILE/ LOCATION MAP  
SCALE: NTS.

TABLE OF CONTENTS

ARCHITECTURAL	
A-01	• EXTERIOR PERSPECTIVE • VICINITY MAP • AIRPORT PROFILE/ LOCATION MAP
A-02	• SITE DEVELOPMENT PLAN
A-03	• GROUND FLOOR (DEMOLITION/ EXISTING PLAN) • GROUND FLOOR (PROPOSED PLAN)
A-04	• DETAILED FRONT ELEVATION • DETAILED REAR ELEVATION • DETAILED RIGHT-SIDE ELEVATION • DETAILED LEFT-SIDE ELEVATION
A-05	• ROOF PLAN • FLOOR TILE LAYOUT PLAN • LONGITUDINAL SECTION • CROSS SECTION
STRUCTURAL	
S-01	• BLOW-UP DETAILS OF CABLE TRENCH • DETAILED SECTIONS OF ENGINE BED • DETAILED PLAN OF ENGINE BED (EXPANSION)
S-02	• DETAILED SECTION OF POWER CABLE MANHOLES • DETAILED SECTION OF POWER CABLE COVER
ELECTRICAL	
E-01	• GENERAL NOTES AND SPECIFICATIONS • SINGLE LINE DIAGRAM

REPUBLIC OF THE PHILIPPINES  
DEPARTMENT OF PUBLIC WORKS AND HIGHWAY  
OFFICE OF THE BUILDING OFFICIALS



REPUBLIC OF THE PHILIPPINES  
CIVIL AVIATION AUTHORITY OF THE PHILIPPINES  
AERODROME DEVELOPMENT AND MANAGEMENT SERVICE  
NAIA ROAD, 1300 PASAY CITY

THIS DRAWINGS AND DESIGN IS EXCLUSIVE PROPERTIES OF CIVIL AVIATION AUTHORITY OF THE PHILIPPINES AND SUCH MUST NOT BE REPRODUCED, EXHIBITED, LOANED NOR COPIED IN PART OR IN WHOLE WITHOUT PROPER PERMISSION AND/OR WRITTEN CONSENT FROM THE DIRECTOR GENERAL CAAP.

AERODROME DEVELOPMENT AND MANAGEMENT SERVICE

INFRASTRUCTURE DEVELOPMENT AND DESIGN DIVISION

DISTRICT / CITY / MUNICIPALITY

LAND USE AND ZONING

LINE AND GRADE

DESIGN STAFF:	INITIAL / DATE
DESIGNED BY: IDDD	
DRAWN BY: RCJ	
CHECKED BY: SJD	

REVIEWED BY:

RAUL R. ORCENA  
Division Chief III, DDD-ADMS

SUBMITTED BY:  
ARNEL F. BORLADO  
Department Manager III, AED-ADMS

RECOMMENDED APPROVAL:  
LT COL VALENTINO A DIONELA PAF (RET)  
ADG II, ADMS

APPROVED:  
CAPTAIN MANUEL ANTONIO L. TAMAYO  
Director General

ARCHITECTURAL

CIVIL / STRUCTURAL

ELECTRICAL

MECHANICAL

SANITARY / PLUMBING

ELECTRONICS

GEODETIC ENGINEERS

PROJECT:  
REHABILITATION OF POWERHOUSE AND SUPPLY, DELIVERY AND INSTALLATION OF GENERATOR SET AT BASCO AIRPORT

LOCATION:  
BASCO AIRPORT  
BARANGAY IHUVOK II,  
BASCO, BATANES

SHEET CONTENTS:  
• EXTERIOR PERSPECTIVE  
• VICINITY MAP  
• SITE DEVELOPMENT PLAN

DRAWING SCALE:	SHEET NO:
AS SHOWN	A - 01
	01 05



REPUBLIC OF THE PHILIPPINES  
CIVIL AVIATION AUTHORITY OF THE PHILIPPINES  
AERODROME DEVELOPMENT AND MANAGEMENT SERVICE  
NAIA ROAD, 1300 PASAY CITY

THIS DRAWINGS AND DESIGN IS EXCLUSIVE PROPERTIES OF CIVIL AVIATION AUTHORITY OF THE PHILIPPINES AND SUCH MUST NOT BE REPRODUCED, EXHIBITED, LOANED NOR COPIED IN PART OR IN WHOLE WITHOUT PROPER PERMISSION AND/OR WRITTEN CONSENT FROM THE DIRECTOR GENERAL CAAP.

AERODROME DEVELOPMENT AND MANAGEMENT SERVICE

INFRASTRUCTURE DEVELOPMENT AND DESIGN DIVISION

DESIGN STAFF:	INITIAL / DATE
DESIGNED BY:	IDDD
DRAWN BY:	RCJ
CHECKED BY:	SJD

REVIEWED BY:

RAUL R. ORUCENA  
Division Chief III, IDDD-ADMS

SUBMITTED BY:

ARNEL F. BORLADO  
Department Manager III, AED-ADMS

RECOMMENDED APPROVAL:

LT COL VALENTINO A. DIONELA PAF (RET)  
ADG II, ADMS

APPROVED:

CAPTAIN SAMUEL ANTONIO L. TAMAYO  
Director General

NOTES/REVISIONS:


PROJECT:

REHABILITATION OF POWERHOUSE AND SUPPLY, DELIVERY AND INSTALLATION OF GENERATOR SET AT BASCO AIRPORT

LOCATION:

BASCO AIRPORT  
BARANGAY IHUVOK II,  
BASCO, BATANES

SHEET CONTENTS:

- SITE DEVELOPMENT PLAN

DRAWING SCALE:

AS SHOWN

SHEET NO:

A - 02

02 05



POWER  
MANHOLE 1

OLD  
POWER  
HOUSE

GUEST  
HOUSE

GUEST  
HOUSE

EXISTING  
COVERED  
POWER  
MANHOLE

NEW  
POWER  
HOUSE

EXISTING  
COVERED  
POWER  
MANHOLE

SITE LOCATION  
POWERHOUSE TO BE REHABILITATE

PARKING AREA

SECURITY  
BLDG.

ADMIN BLDG.

OLD  
FSS  
BLDG.

FSS  
BLDG.

PARKING AREA

PLANT BOX

PARKING AREA

PLANT BOX

BAGGAGE  
CARTS

RAMP  
GATE

PASSENGER TERMINAL  
BUILDING

RAMP AREA

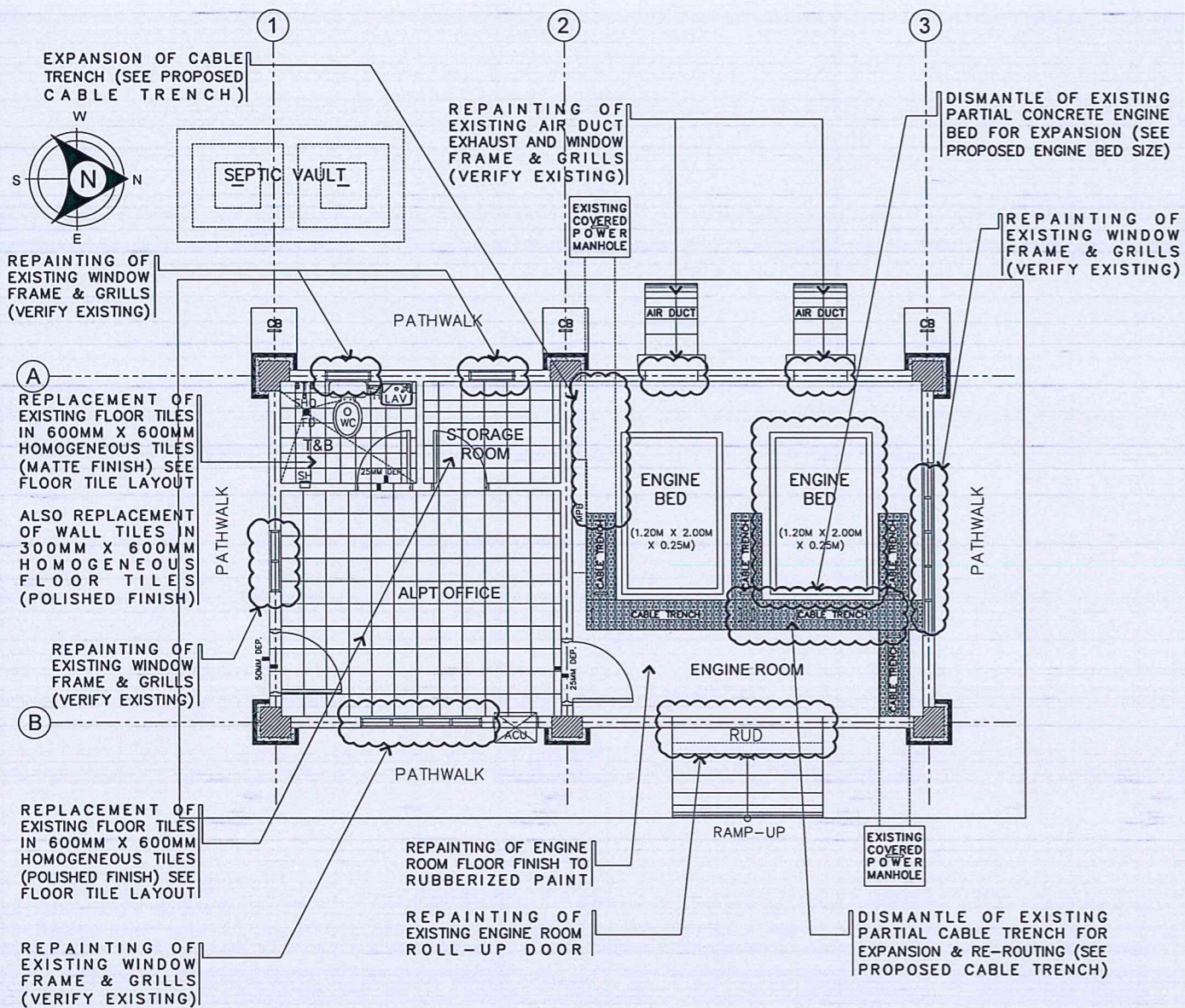
PARKING AREA

REHABILITATION OF POWER HOUSE  
SITE DEVELOPMENT PLAN

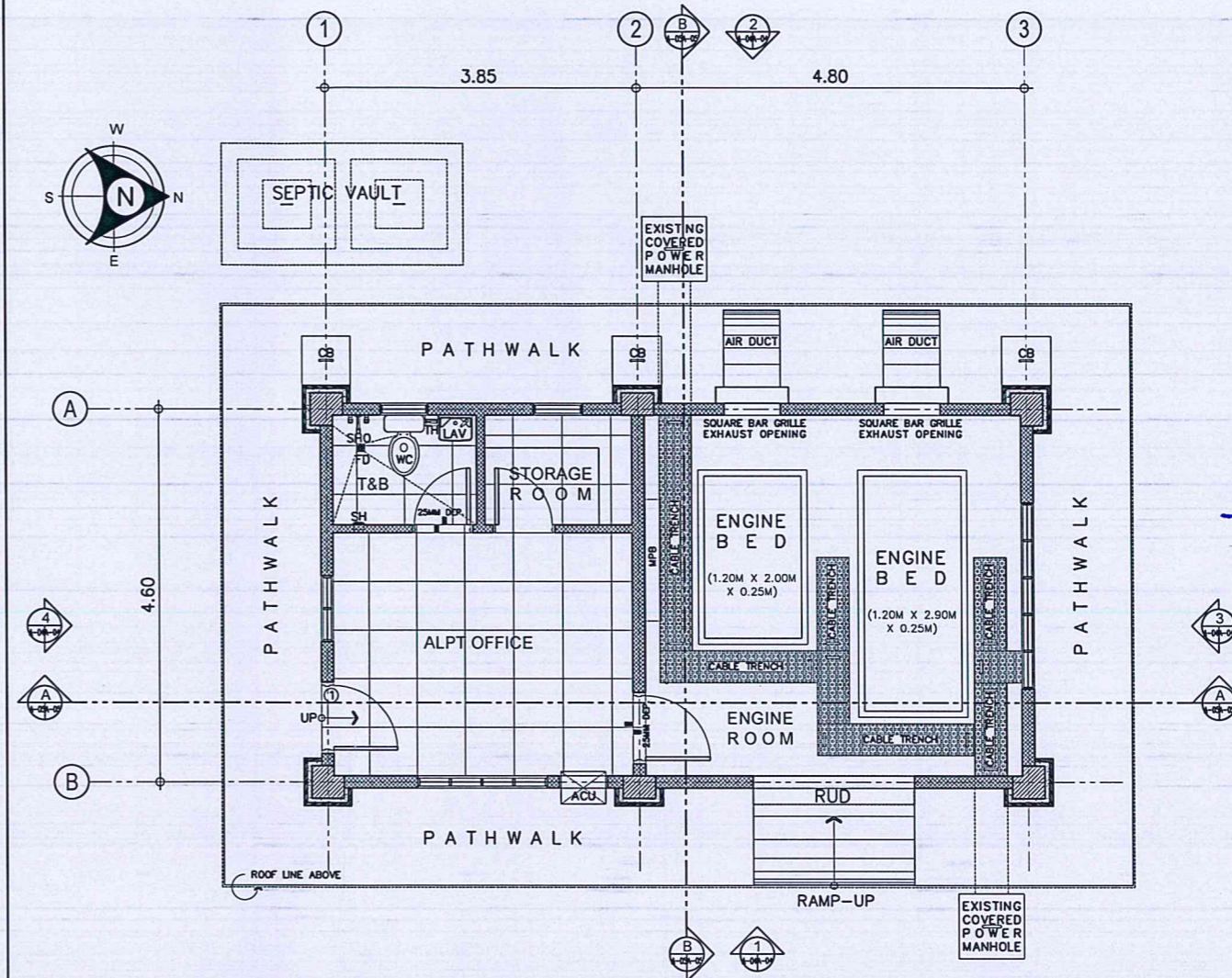
1  
A-02A-02

SCALE:

NTS.



1  
A-03/A-03  
REHABILITATION OF POWER HOUSE  
**GROUND FLOOR (DEMOLITION/ EXISTING PLAN)**  
SCALE: 1:50 MTS.



2  
A-03/A-03  
REHABILITATION OF POWER HOUSE  
**GROUND FLOOR (PROPOSED PLAN)**  
SCALE: 1:50 MTS.

THIS DRAWINGS AND DESIGN IS EXCLUSIVE PROPERTIES OF CIVIL AVIATION AUTHORITY OF THE PHILIPPINES AND SUCH MUST NOT BE REPRODUCED, EXHIBITED, LOANED NOR COPIED IN PART OR IN WHOLE WITHOUT PROPER PERMISSION AND/OR WRITTEN CONSENT FROM THE DIRECTOR GENERAL CAAP.

AERODROME DEVELOPMENT AND MANAGEMENT SERVICE

INFRASTRUCTURE DEVELOPMENT AND DESIGN DIVISION

DESIGN STAFF:	INITIAL / DATE
DESIGNED BY: IDDD	
DRAWN BY: RCJ	
CHECKED BY: SJD	

REVIEWED BY:

RAUL R. CRUCENA  
Division Chief III, IDDD-ADMS

SUBMITTED BY:

ARNEL F. BORLADO  
Department Manager III, AED-ADMS

RECOMMENDED APPROVAL:

LT COL VALENTINO A DIONELA PAF (RET)  
ADG II, ADMS

APPROVED:

CAPTAIN MANUEL ANTONIO L. TAMAYO  
Director General

NOTES/REVISIONS:

PROJECT:  
REHABILITATION OF POWERHOUSE AND SUPPLY, DELIVERY AND INSTALLATION OF GENERATOR SET AT BASCO AIRPORT

LOCATION:  
BASCO AIRPORT  
BARANGAY IHUVOK II,  
BASCO, BATANES

SHEET CONTENTS:  
• GROUND FLOOR (DEMOLITION/ EXISTING PLAN)  
• GROUND FLOOR (PROPOSED PLAN)

DRAWING SCALE:	SHEET NO:
AS SHOWN	A - 03
	03 05

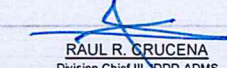
THIS DRAWINGS AND DESIGN IS EXCLUSIVE PROPERTIES OF CIVIL AVIATION AUTHORITY OF THE PHILIPPINES AND SUCH MUST NOT BE REPRODUCED, EXHIBITED, LOANED NOR COPIED IN PART OR IN WHOLE WITHOUT PROPER PERMISSION AND/OR WRITTEN CONSENT FROM THE DIRECTOR GENERAL CAAP.

AERODROME DEVELOPMENT AND MANAGEMENT SERVICE

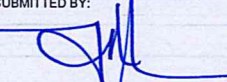
INFRASTRUCTURE DEVELOPMENT AND DESIGN DIVISION

DESIGN STAFF:	INITIAL / DATE
DESIGNED BY:	IDDD
DRAWN BY:	RCJ
CHECKED BY:	SJD

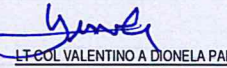
REVIEWED BY:

  
RAUL R. GRUCENA  
Division Chief III, YDDD-ADMS


SUBMITTED BY:

  
ARNEL F. BORLADO  
Department Manager III, AED-ADMS

RECOMMENDED APPROVAL:

  
LT COL VALENTINO A. DIONELA PAF (RET)  
ADG II, ADMS

APPROVED:

  
CAPTAIN MANUEL ANTONIO L. TAMAYO  
Director General

NOTES/REVISIONS:


PROJECT:

REHABILITATION OF POWERHOUSE AND SUPPLY, DELIVERY AND INSTALLATION OF GENERATOR SET AT BASCO AIRPORT

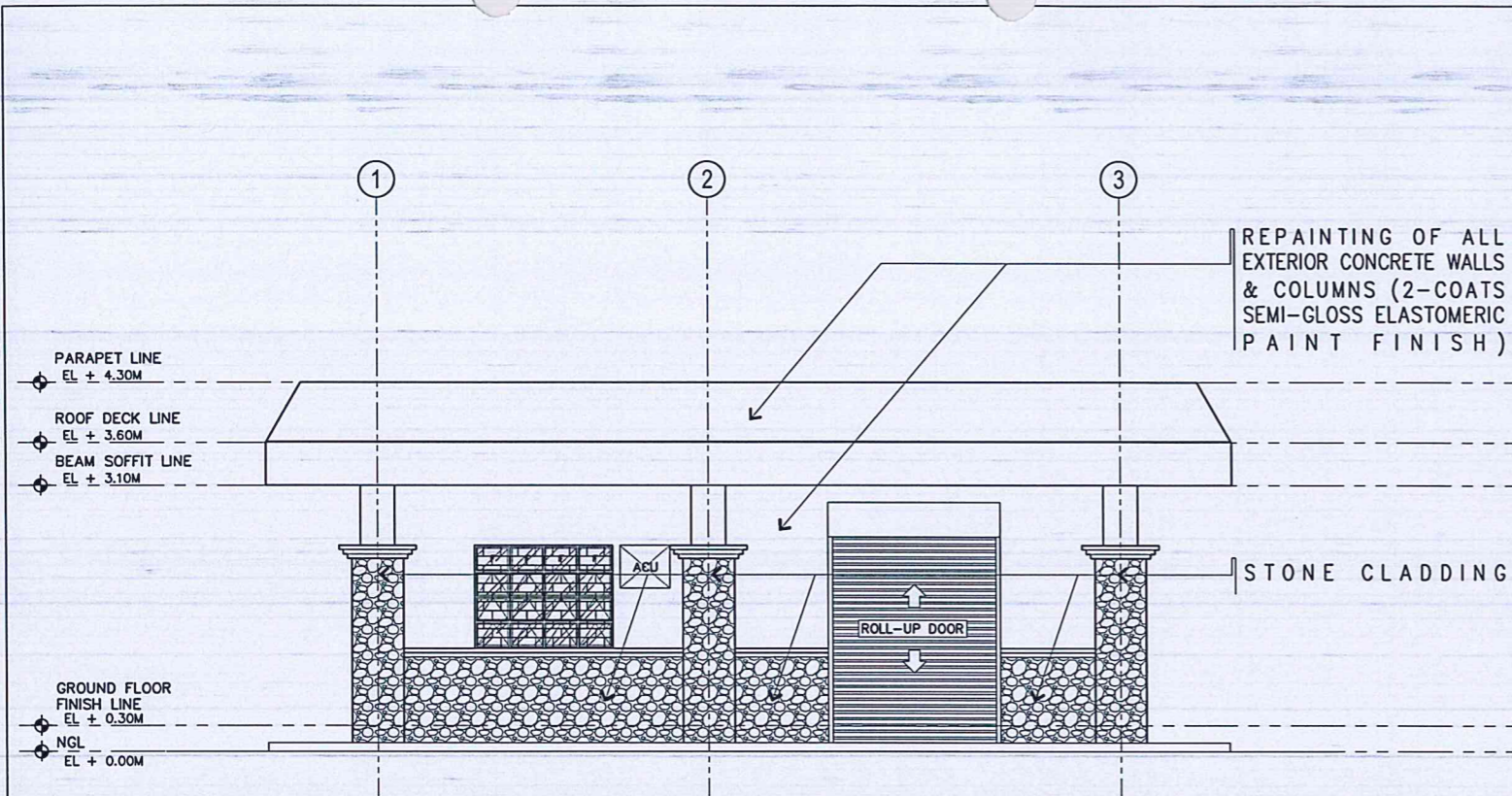
LOCATION:

BASCO AIRPORT  
BARANGAY IHUVOK II,  
BASCO, BATANES

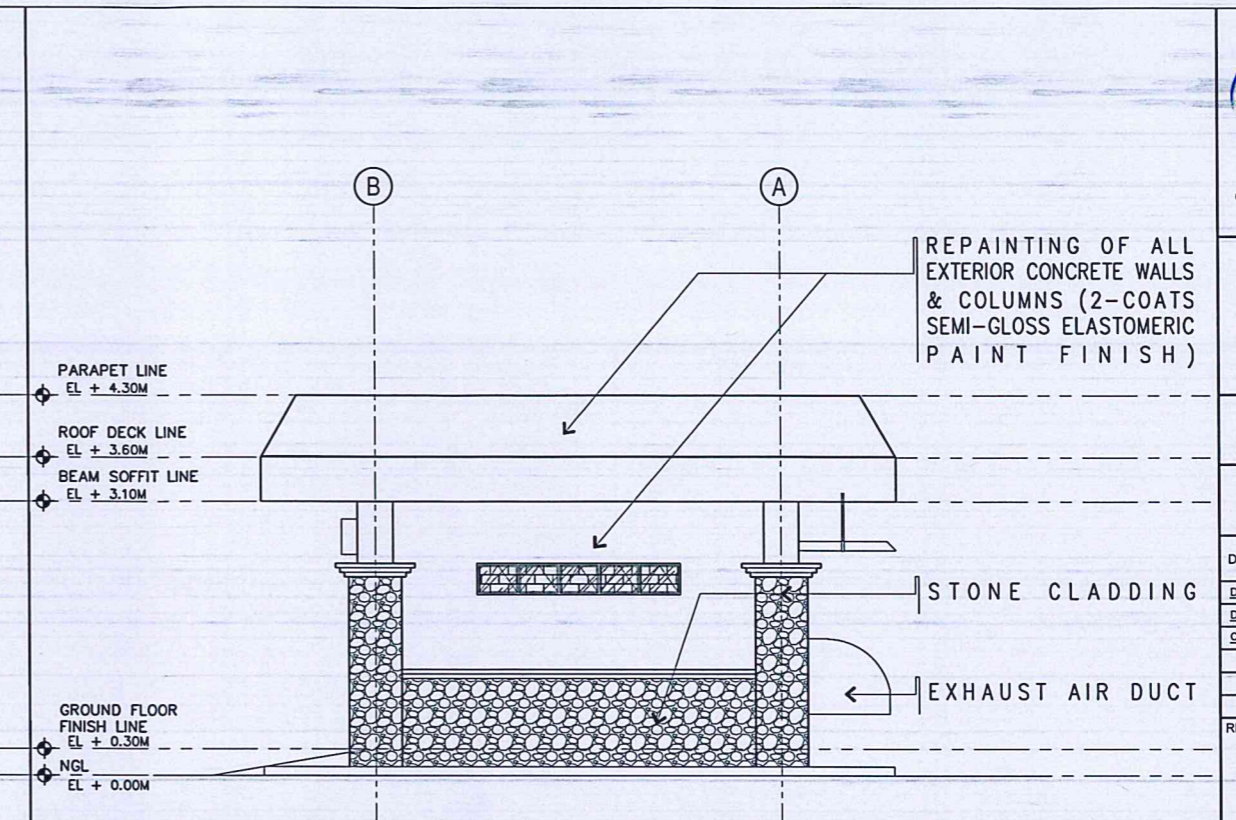
SHEET CONTENTS:

- DETAILED FRONT ELEVATION
- DETAILED REAR ELEVATION
- DETAILED RIGHT-SIDE ELEVATION
- DETAILED LEFT-SIDE ELEVATION

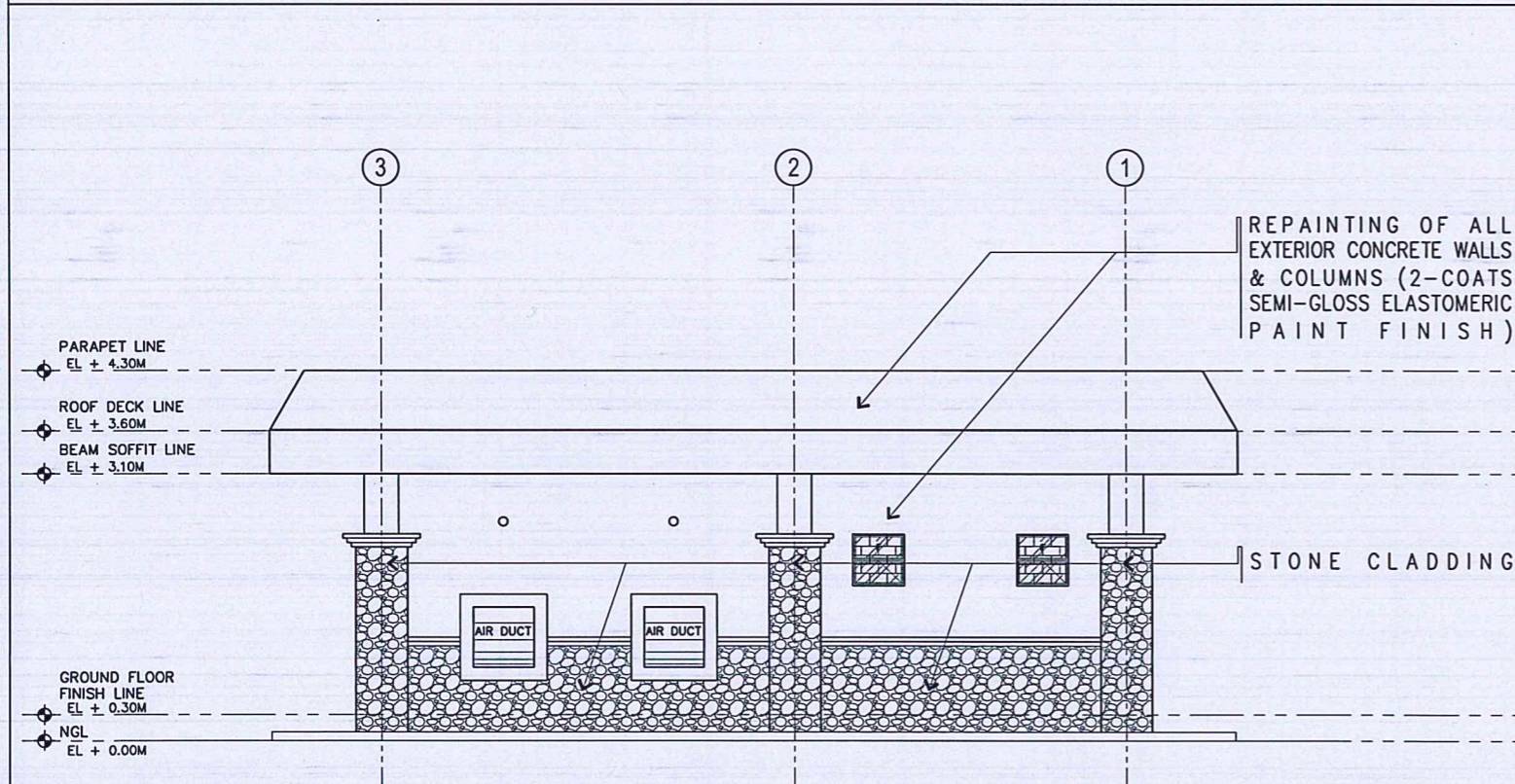
DRAWING SCALE:	SHEET NO:
AS SHOWN	A - 04
	04 05



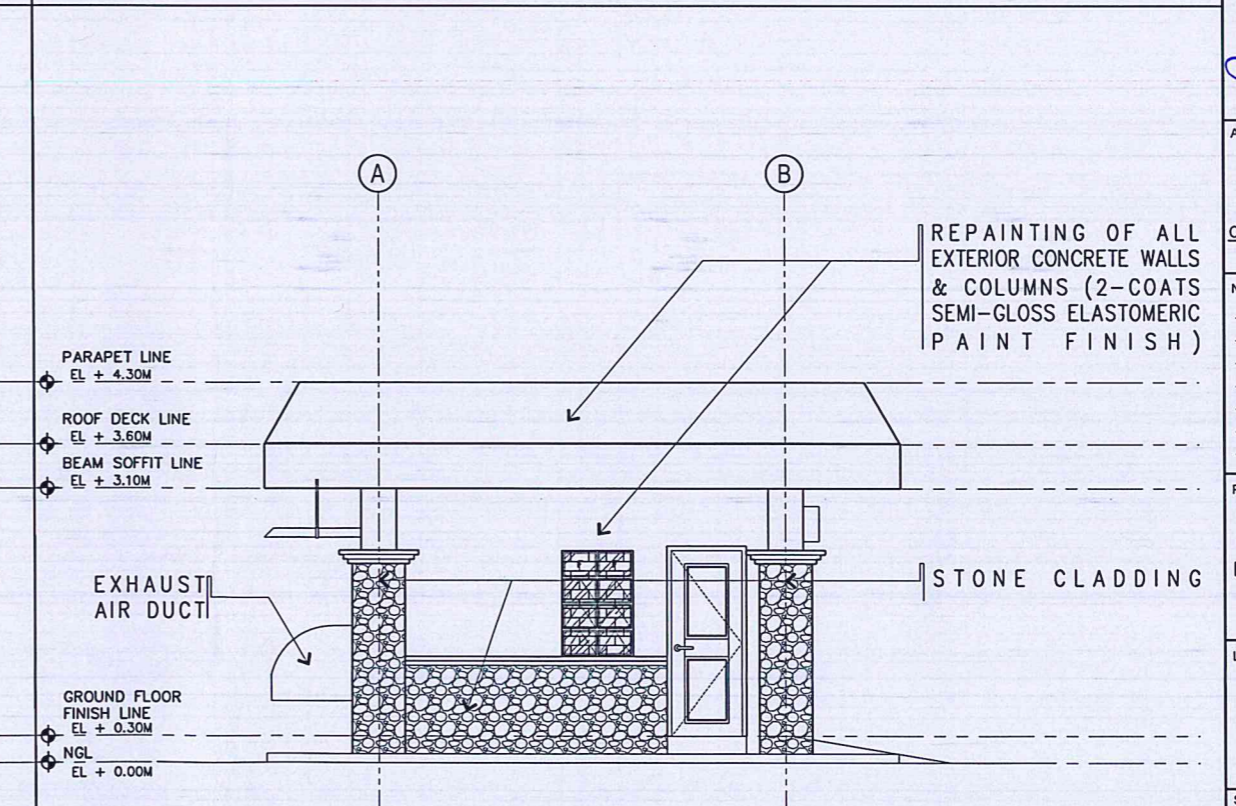
1  
A-04A-04  
REHABILITATION OF POWER HOUSE  
**DETAILED FRONT ELEVATION**  
SCALE: 1:50 MTS.



3  
A-04A-04  
REHABILITATION OF POWER HOUSE  
**DETAILED RIGHT-SIDE ELEVATION**  
SCALE: 1:50 MTS.

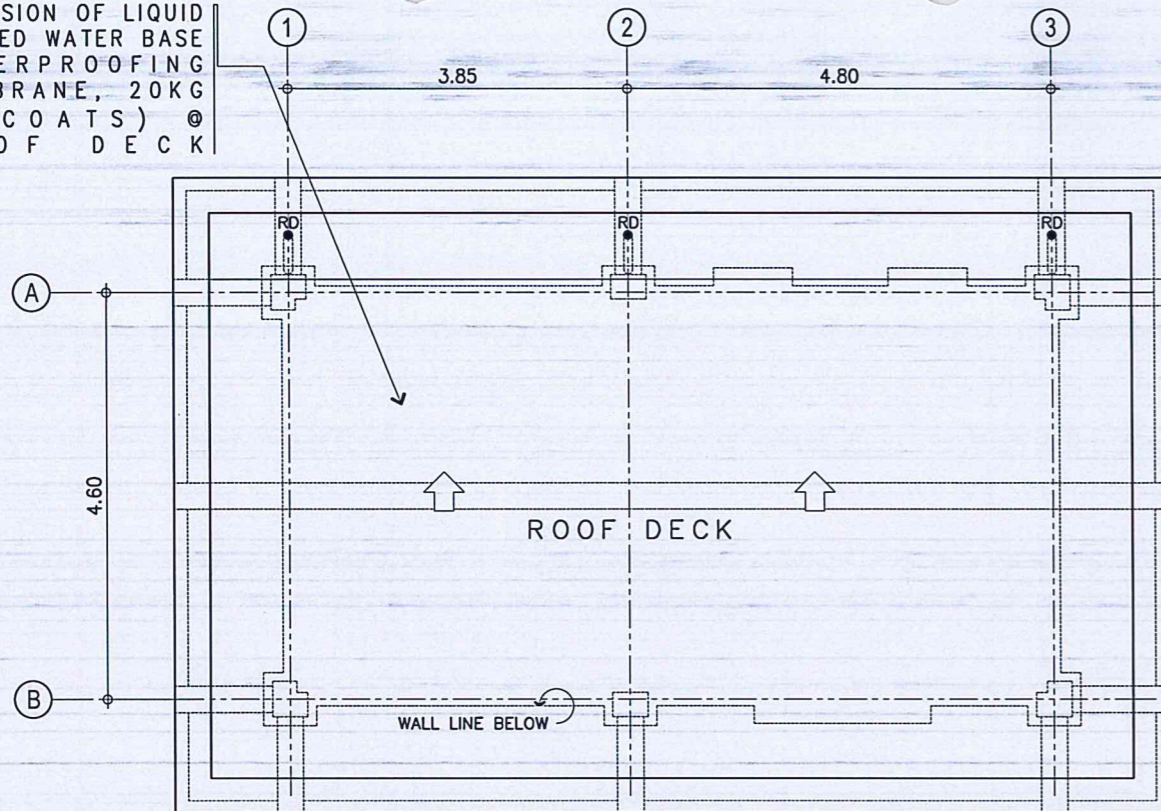


2  
A-04A-04  
REHABILITATION OF POWER HOUSE  
**DETAILED REAR ELEVATION**  
SCALE: 1:50 MTS.



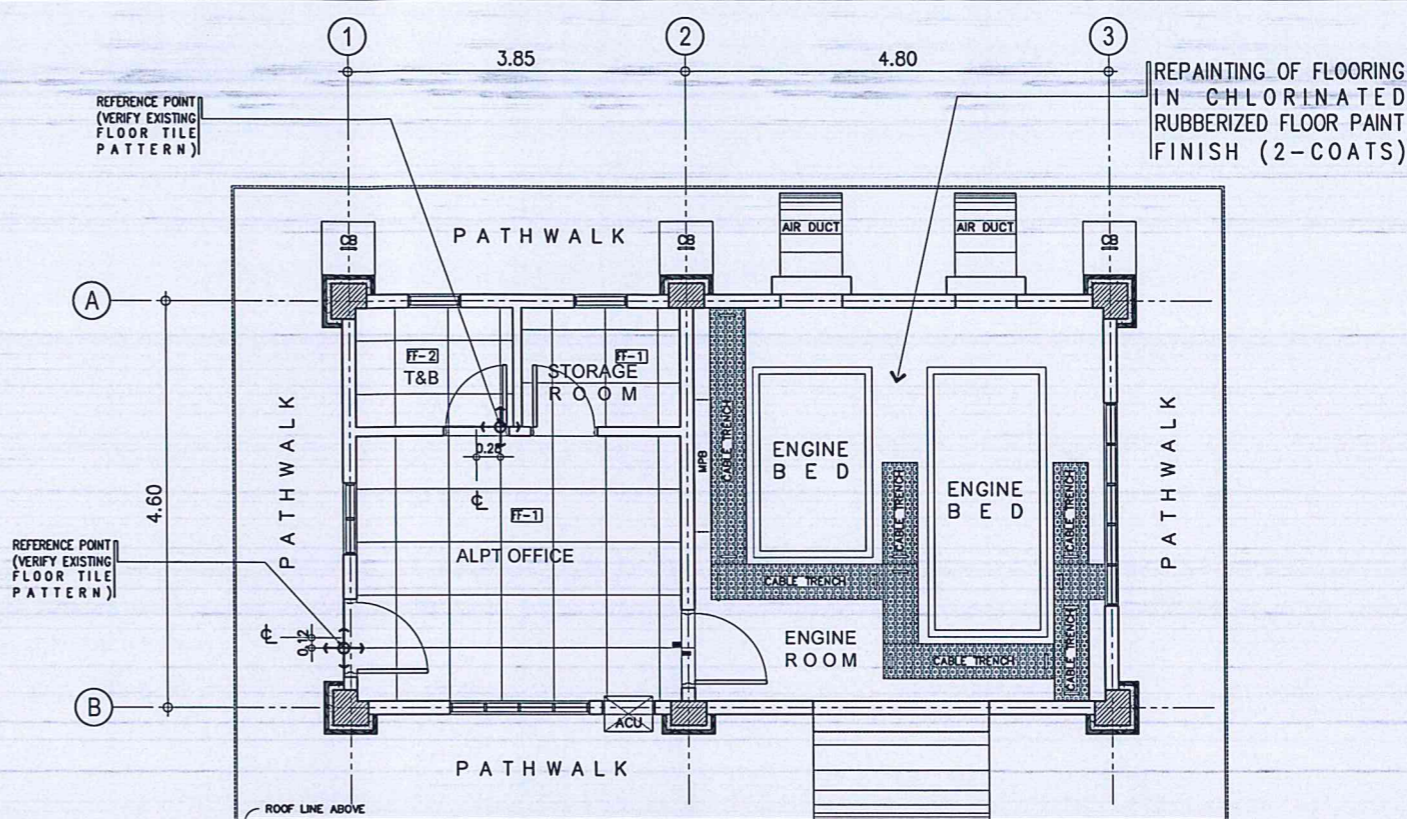
4  
A-04A-04  
REHABILITATION OF POWER HOUSE  
**DETAILED LEFT-SIDE ELEVATION**  
SCALE: 1:50 MTS.

PROVISION OF LIQUID APPLIED WATER BASE WATERPROOFING MEMBRANE, 20KG (4 COATS) @ ROOF DECK

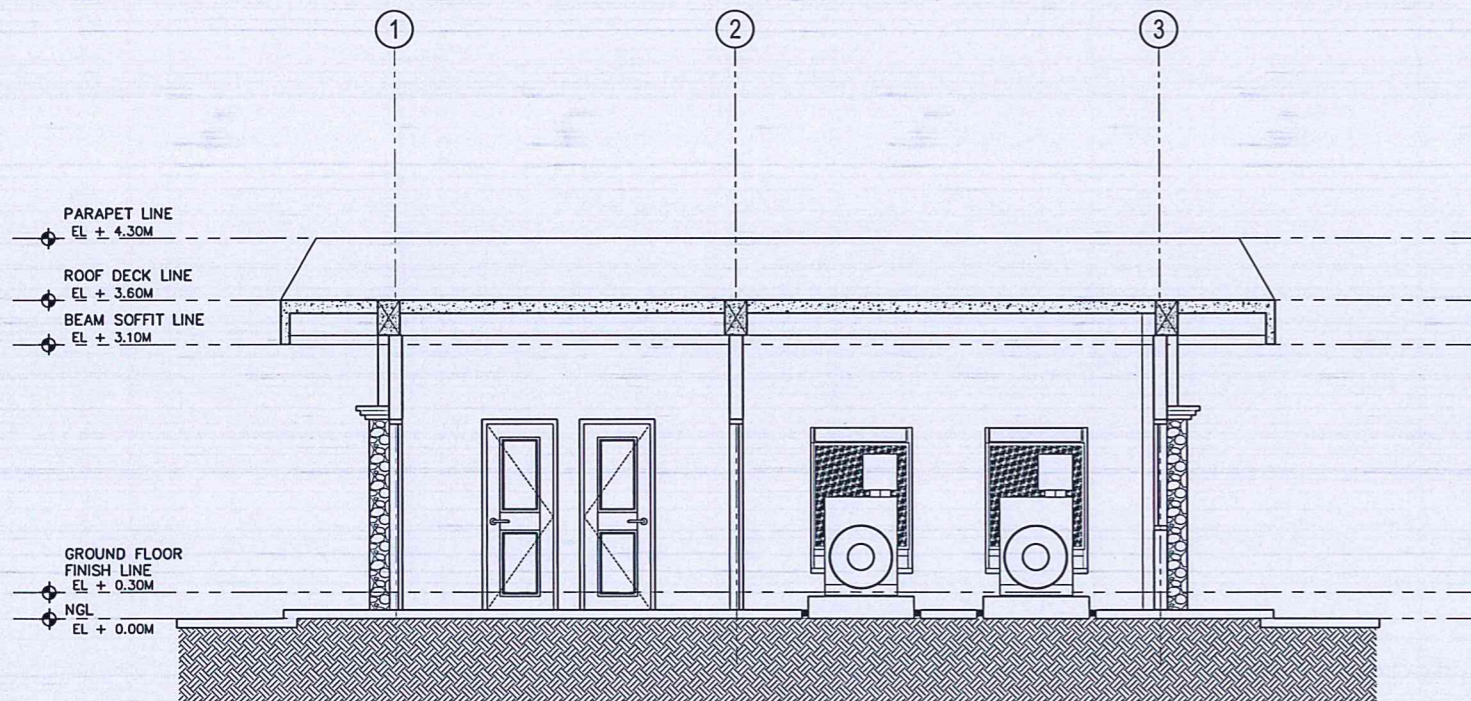


REHABILITATION OF POWER HOUSE  
**ROOF PLAN**  
SCALE: 1:50 MTS.

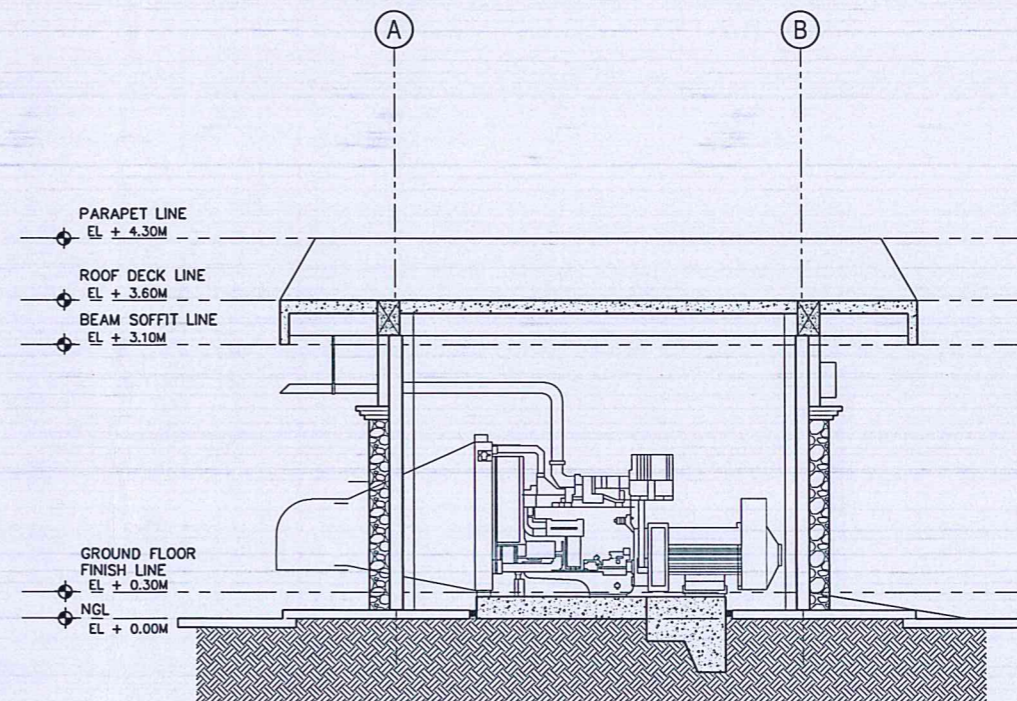
LEGEND	
TAG	FLOOR FINISHES
FF-1	600MM X 600MM HOMOGENEOUS TILES POLISHED FINISH
FF-2	600MM X 600MM HOMOGENEOUS TILES MATTE FINISH
NOTE: OBSERVE 3MM TILE SPACING FOR GROUT (SUBMIT GROUT SAMPLE FOR APPROVAL)	



REHABILITATION OF POWER HOUSE  
**FLOOR TILE LAYOUT PLAN**  
SCALE: 1:50 MTS.



REHABILITATION OF POWER HOUSE  
**LONGITUDINAL SECTION**  
SCALE: 1:50 MTS.



REHABILITATION OF POWER HOUSE  
**CROSS SECTION**  
SCALE: 1:50 MTS.

OTHER SCOPE:  
• REPAINTING OF ALL INTERIOR AND EXTERIOR WALLS, COLUMNS & CEILINGS (SEE DETAILED PLANS)



REPUBLIC OF THE PHILIPPINES  
CIVIL AVIATION AUTHORITY OF THE PHILIPPINES  
AERODROME DEVELOPMENT AND MANAGEMENT SERVICE  
NAIA ROAD, 1300 PASAY CITY

THIS DRAWINGS AND DESIGN IS EXCLUSIVE PROPERTIES OF CIVIL AVIATION AUTHORITY OF THE PHILIPPINES AND SUCH MUST NOT BE REPRODUCED, EXHIBITED, LOANED NOR COPIED IN PART OR IN WHOLE WITHOUT PROPER PERMISSION AND/OR WRITTEN CONSENT FROM THE DIRECTOR GENERAL CAAP.

AERODROME DEVELOPMENT AND MANAGEMENT SERVICE

INFRASTRUCTURE DEVELOPMENT AND DESIGN DIVISION

DESIGN STAFF:	INITIAL / DATE
DESIGNED BY: IDDD	
DRAWN BY: RCJ	
CHECKED BY: SJD	

REVIEWED BY:

RAUL R. CRUCENA  
Division Chief III, IDDD-ADMS

SUBMITTED BY:  
ARNEL F. BORLADO  
Department Manager III, AED-ADMS

RECOMMENDED APPROVAL:

LT COL VALENTINO A DIONELA PAF (RET)  
ADG II, ADMS

APPROVED:

CAPTAIN MANUEL ANTONIO L. TAMAYO  
Director General

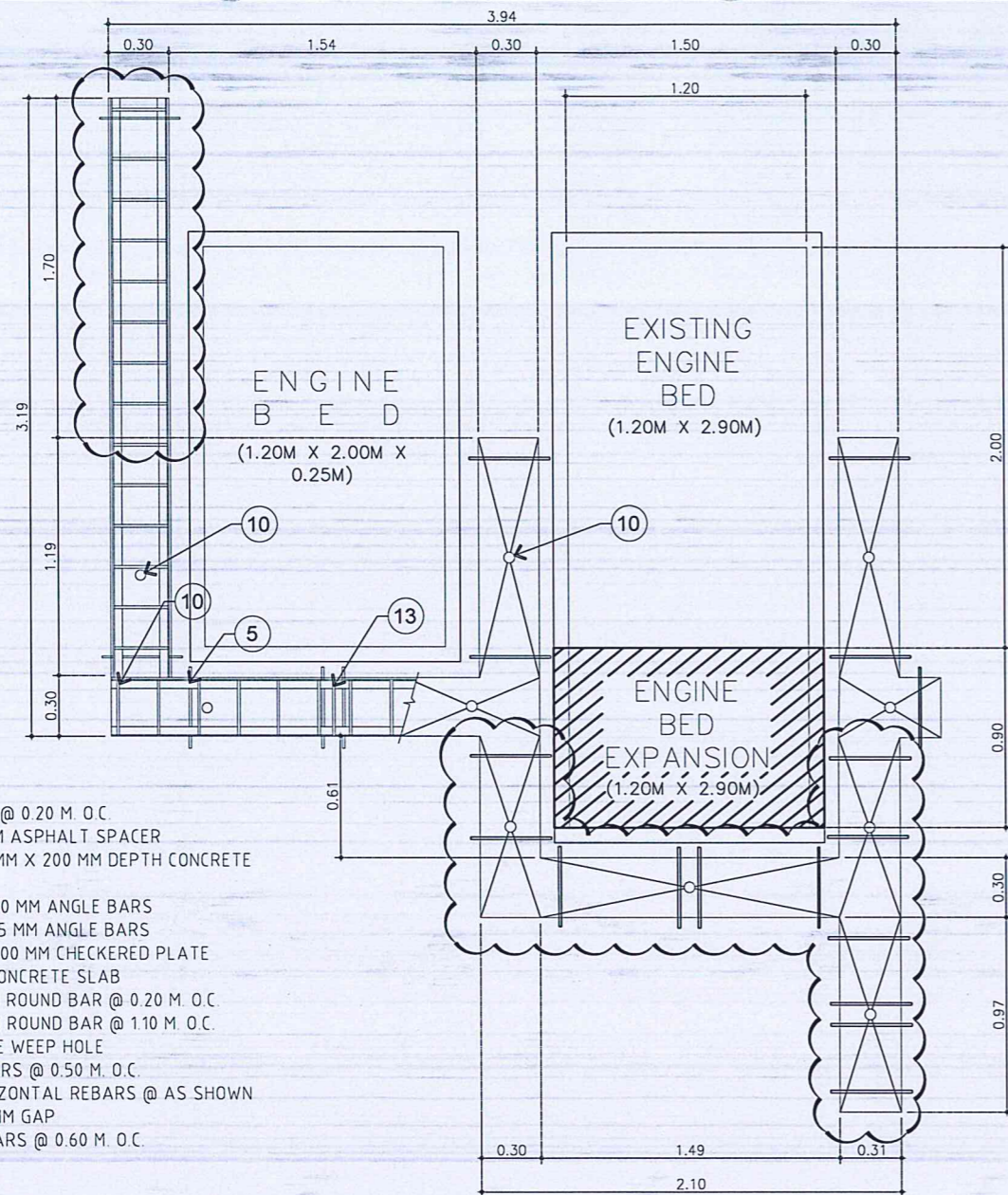
NOTES/REVISIONS:

PROJECT:  
REHABILITATION OF POWERHOUSE AND SUPPLY, DELIVERY AND INSTALLATION OF GENERATOR SET AT BASCO AIRPORT

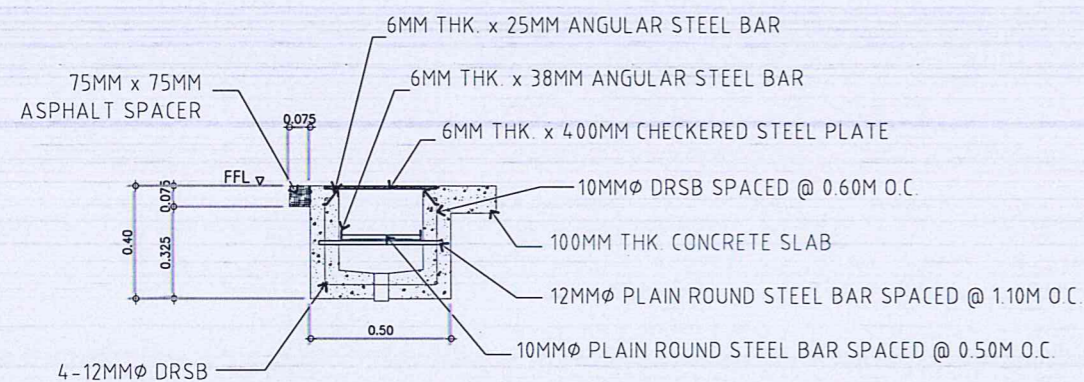
LOCATION:  
BASCO AIRPORT  
BARANGAY IHUVOK II,  
BASCO, BATANES

SHEET CONTENTS:  
• ROOF PLAN  
• LONGITUDINAL SECTION  
• CROSS SECTION

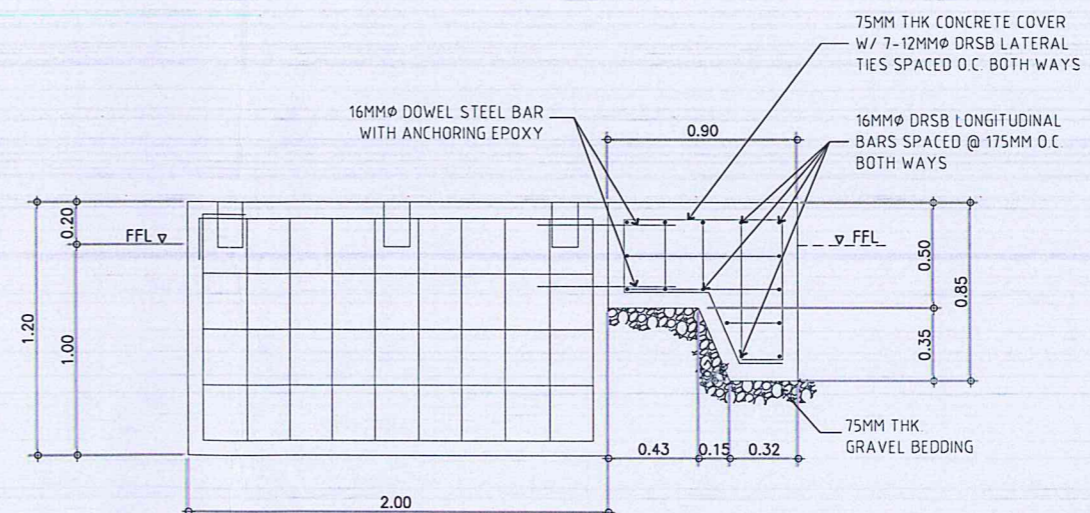
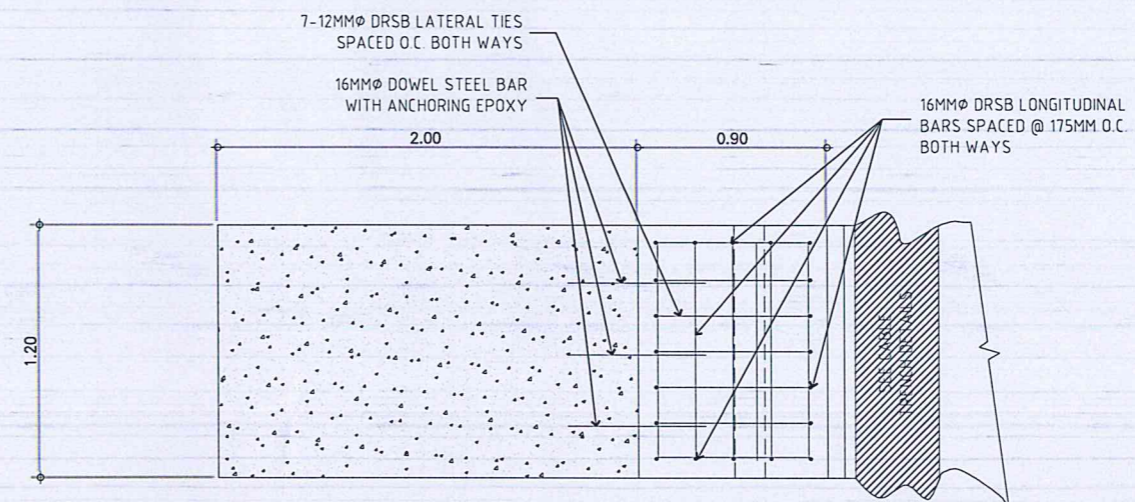
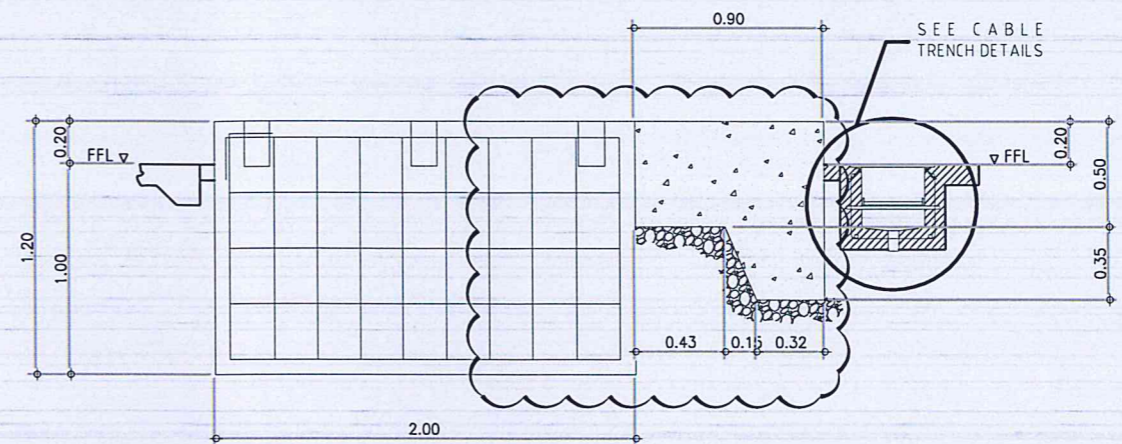
DRAWING SCALE:	SHEET NO:
AS SHOWN	A - 05
	05 05



REHABILITATION OF POWER HOUSE  
**DETAILED PLAN OF CABLE TRENCH**  
SCALE: 1:20 MTS.  
S-02S-02



REHABILITATION OF POWER HOUSE  
**DETAILED SECTION OF CABLE TRENCH**  
SCALE: 1:10 MTS.  
S-02S-02



REHABILITATION OF POWER HOUSE  
**DETAILED SECTIONS OF ENGINE BED**  
SCALE: 1:20 MTS.  
S-01S-01



REPUBLIC OF THE PHILIPPINES  
CIVIL AVIATION AUTHORITY OF THE PHILIPPINES  
1101 ROAD, 1200 PASAY CITY

THIS DRAWING IS EXCLUSIVE PROPERTY OF CIVIL AVIATION AUTHORITY OF THE PHILIPPINES AND MUST NOT BE REPRODUCED, EXHIBITED, LOANED OR COPIED IN PART OR IN WHOLE WITHOUT PROPER PERMISSION AND/OR WRITTEN CONSENT FROM THE DIRECTOR GENERAL CAAP.

AERODROME DEVELOPMENT AND MANAGEMENT SERVICE

INFRASTRUCTURE DEVELOPMENT AND DESIGN DIVISION

DESIGN STAFF	INITIAL/DATE
DESIGNED BY:	IDDD
DRAWN BY:	KCM
CHECKED BY:	EJD/JR
DATE:	

REVIEWED BY:

RAUL R. CRUCENA  
Division Chief III, IDDD - ADMS

SUBMITTED BY:

ARNEL F. BORLADO  
Department Manager III, AED - ADMS

RECOMMEND APPROVAL:

LT COL VALENTINO A DIONELA PAF (RET)  
Assistant Director General II, ADMS

APPROVED:

CAPTAIN MANUEL ANTONIO L. TAMAYO  
Director General, CAAP

NOTES / REVISIONS:

PROJECT:

REHABILITATION OF POWER HOUSE AND SUPPLY, DELIVERY & INSTALLATION OF GENERATOR SET AT BASCO AIRPORT

LOCATION:

BASCO AIRPORT  
BASCO, BATANES

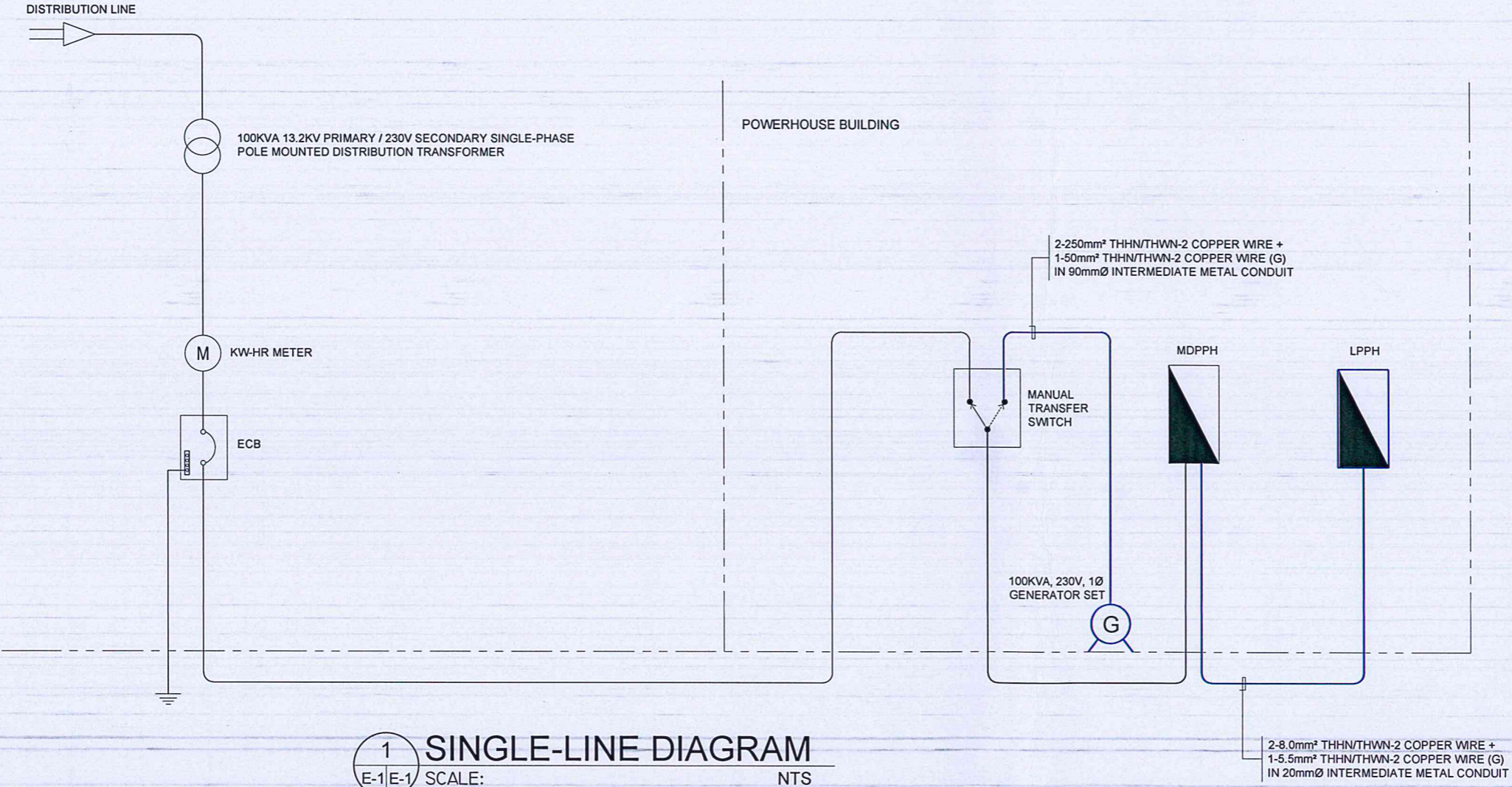
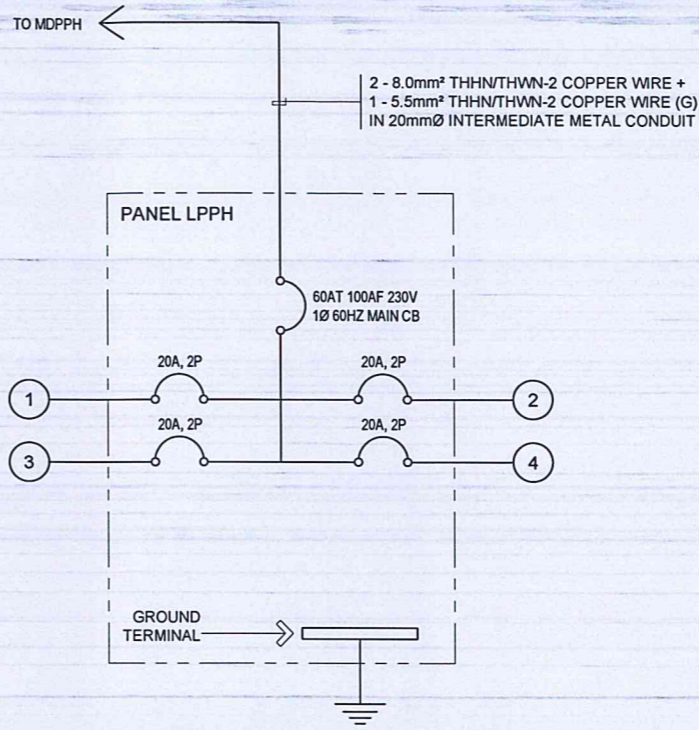
SHEET CONTENTS:

- DETAILED PLAN OF CABLE TRENCH
- DETAILED SECTION OF CABLE TRENCH
- DETAILED SECTION OF ENGINE BED (EXPANSION)



AS SHOWN	S-01
----------	------

GENERAL NOTES & SPECIFICATIONS:

1. ALL ELECTRICAL WORKS AND INSTALLATIONS SHALL COMPLY WITH THE PROVISIONS OF THE LATEST EDITION OF THE PHILIPPINE ELECTRICAL CODE WITH THE RULES AND REGULATIONS OF THE NATIONAL AND LOCAL AUTHORITIES CONCERNED IN THE ENFORCEMENT OF ELECTRICAL LAWS AND REGULATIONS OF THE UTILITY COMPANIES CONCERNED.
2. ALL ELECTRICAL WORKS HEREIN SHALL BE DONE UNDER THE DIRECT SUPERVISION OF A DULY REGISTERED ELECTRICAL ENGINEER.
3. ALL ELECTRICAL EQUIPMENT SHALL BE PROPERLY GROUNDED IN ACCORDANCE WITH THE REQUIREMENT OF THE PHILIPPINE ELECTRICAL CODE.
4. ELECTRICAL PIPES, WIRES AND CABLES TO BE USED SHALL BE UNDERWRITERS LABORATORY (UL) LISTED
5. ALL MATERIALS TO BE USED SHALL BE BRAND NEW AND OF THE APPROVED TYPE FOR BOTH LOCATION AND PURPOSE INTENDED.
6. ELECTRICAL CONDUITS, WIRES AND CABLES TO BE USED SHALL BE UNDERWRITERS LABORATORY (UL) LISTED.
7. PULL BOXES GAUGE NO. 16 (MINIMUM) SHALL BE PROVIDED BY THE CONTRACTOR WHENEVER REQUIRED AND NECESSARY AND SHALL BE INSTALLED AT CONVENIENT SPACE AND LOCATION TO FACILITATE WIRE PULLING EVEN IF THESE ITEMS ARE NOT SHOWN IN THE PLAN.
8. PRINTED INDEX LABEL SHALL BE AFFIXED TO INSIDE SURFACE OF EACH PANEL BOARD DOOR, CLEARLY INDICATING AREA AND TYPE OF LOAD SERVED BY EACH BRANCH CIRCUIT PROTECTIVE DEVICE, INCLUDING SPARES. HAND WRITTEN WILL NOT BE ACCEPTED. ENGRAVED LAMINATED PLASTIC IDENTIFICATION PLATES SHALL BE FURNISHED AND INSTALLED ON ALL PANELS, PANELS SHALL BE AFFIXED IN FRONT OF PANELS.
9. ALL WORKS SHALL BE EXECUTED IN A WORKMANSHIP MANNER AND SHALL PRESENT A NEAT AND ORDERLY ACCEPTANCE. ALL WIRING SHALL BE CONCEALED AS MUCH AS POSSIBLE.



1 SINGLE-LINE DIAGRAM  
E-1 E-1 SCALE: NTS

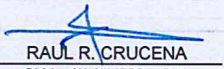

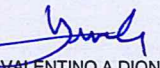
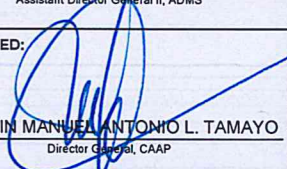


REPUBLIC OF THE PHILIPPINES  
CIVIL AVIATION AUTHORITY OF THE PHILIPPINES  
PALM BLVD. 1000 PASAY CITY

THIS DRAWING IS EXCLUSIVE PROPERTY OF CIVIL AVIATION AUTHORITY OF THE PHILIPPINES AND MUST NOT BE REPRODUCED, EXHIBITED, LOANED OR COPIED IN PART OR IN WHOLE WITHOUT PROPER PERMISSION AND/OR WRITTEN CONSENT FROM THE DIRECTOR GENERAL CAAP.

AERODROME DEVELOPMENT AND MANAGEMENT SERVICE

INFRASTRUCTURE DEVELOPMENT AND DESIGN DIVISION

DESIGN STAFF	INITIAL/DATE
DESIGNED BY:	IDDD
DRAWN BY:	RUA JR.
CHECKED BY:	EJD JR.
DATE:	
REVIEWED BY:	
 RAUL R. CRUCENA Division Chief III, IDDD - ADMS	
SUBMITTED BY:	
 ARNEL F. BORLADO Department Manager III, AED - ADMS	
RECOMMEND APPROVAL:	
 LT COL VALENTINO A DIONELA PAF (RET) Assistant Director General II, ADMS	
APPROVED:	
 CAPTAIN MANUEL ANTONIO L. TAMAYO Director General, CAAP	
NOTES / REVISIONS:	
PROJECT:	
REHABILITATION OF POWER HOUSE AND SUPPLY, DELIVERY & INSTALLATION OF GENERATOR SET AT BASCO AIRPORT	
LOCATION:	
BASCO AIRPORT BASCO, BATANES	
SHEET CONTENTS:	
• GENERAL NOTES & SPECIFICATIONS • SINGLE LINE DIAGRAM	
AS SHOWN	E-01