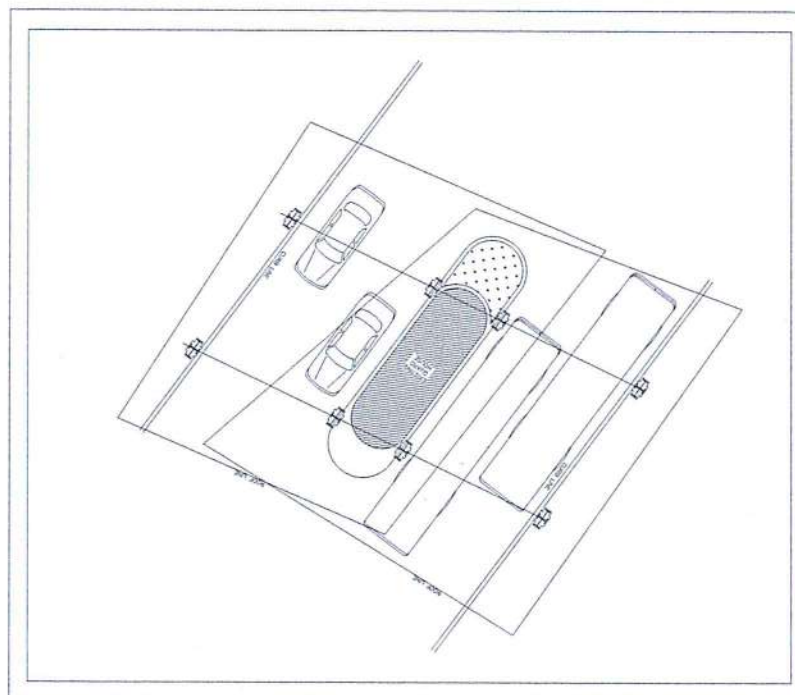




1 PERSPECTIVE  
01 01 SCALE: NTS



2 VICINITY MAP  
01 01 SCALE: NTS



3 BLOW-UP PLAN  
01 01 SCALE: 1 : 200 M



4 LOCATION MAP  
01 01 SCALE: NTS



CIVIL AVIATION AUTHORITY OF THE PHILIPPINES

THIS DRAWING IS AN EXCLUSIVE PROPERTY OF CIVIL AVIATION AUTHORITY OF THE PHILIPPINES AND MUST NOT BE REPRODUCED, EXHIBITED, LOANED NOR COPIED IN PART OR IN WHOLE WITHOUT PROPER PERMISSION AND/OR WRITTEN CONSENT FROM THE CAAP DIRECTOR GENERAL

AERODROME DEVELOPMENT AND MANAGEMENT SERVICE

INFRASTRUCTURE DEVELOPMENT AND DESIGN DIVISION

DESIGN STAFF:	INITIAL / DATE
DESIGNED BY: IDDD	
DRAWN BY: JCCS	
CHECKED BY: FMN	
EPS	

REVIEWED BY:

EMERSON P. SALAS  
Supervising Aerodrome Engineer, IDDD-ADMS

SUBMITTED BY:

ARNEL F. BORLADO  
Department Manager III, AED-ADMS

RECOMMENDED APPROVAL:

LT COL. VALENTINO A. DIONELA PAF (RET)  
ADG II, ADMS

APPROVED:

CAPTAIN MANUEL ANTONIO L. TAMAYO  
Director General

NOTES / REVISIONS:

PROJECT TITLE:

PROVISION OF COVERED SHED AT MAIN GATE

LOCATION:

BICOL INTERNATIONAL AIRPORT  
DARAGA, ALBAY

SHEET CONTENTS:

- PERSPECTIVE
- VICINITY MAP
- BLOW-UP PLAN
- LOCATION

DRAWING SCALE:	SHEET NO.
AS SHOWN	01





CIVIL AVIATION AUTHORITY OF THE PHILIPPINES

THIS DRAWING IS AN EXCLUSIVE PROPERTY OF CIVIL AVIATION AUTHORITY OF THE PHILIPPINES AND MUST NOT BE REPRODUCED, EXHIBITED, LOANED NOR COPIED IN PART OR IN WHOLE WITHOUT PROPER PERMISSION AND/OR WRITTEN CONSENT FROM THE CAAP DIRECTOR GENERAL.

AERODROME DEVELOPMENT AND MANAGEMENT SERVICE

INFRASTRUCTURE DEVELOPMENT AND DESIGN DIVISION

DESIGN STAFF:	INITIAL / DATE
DESIGNED BY:	IDDD
DRAWN BY:	JCCS
CHECKED BY:	FMN
	EPS

REVIEWED BY:  
  
EMERSON P. SALAS  
Acting Division Chief III, IDDD-ADMS

SUBMITTED BY:  
  
ARNEL F. BORLADO  
Department Manager III, AED-ADMS

RECOMMENDED APPROVAL:  
  
LT COL. VALENTINO A. DIONELA PAF (RET)  
ADG II, ADMS

APPROVED:  
  
CAPTAIN MANUEL ANTONIO L. TAMAYO  
Director General

NOTES / REVISIONS:

PROJECT TITLE:

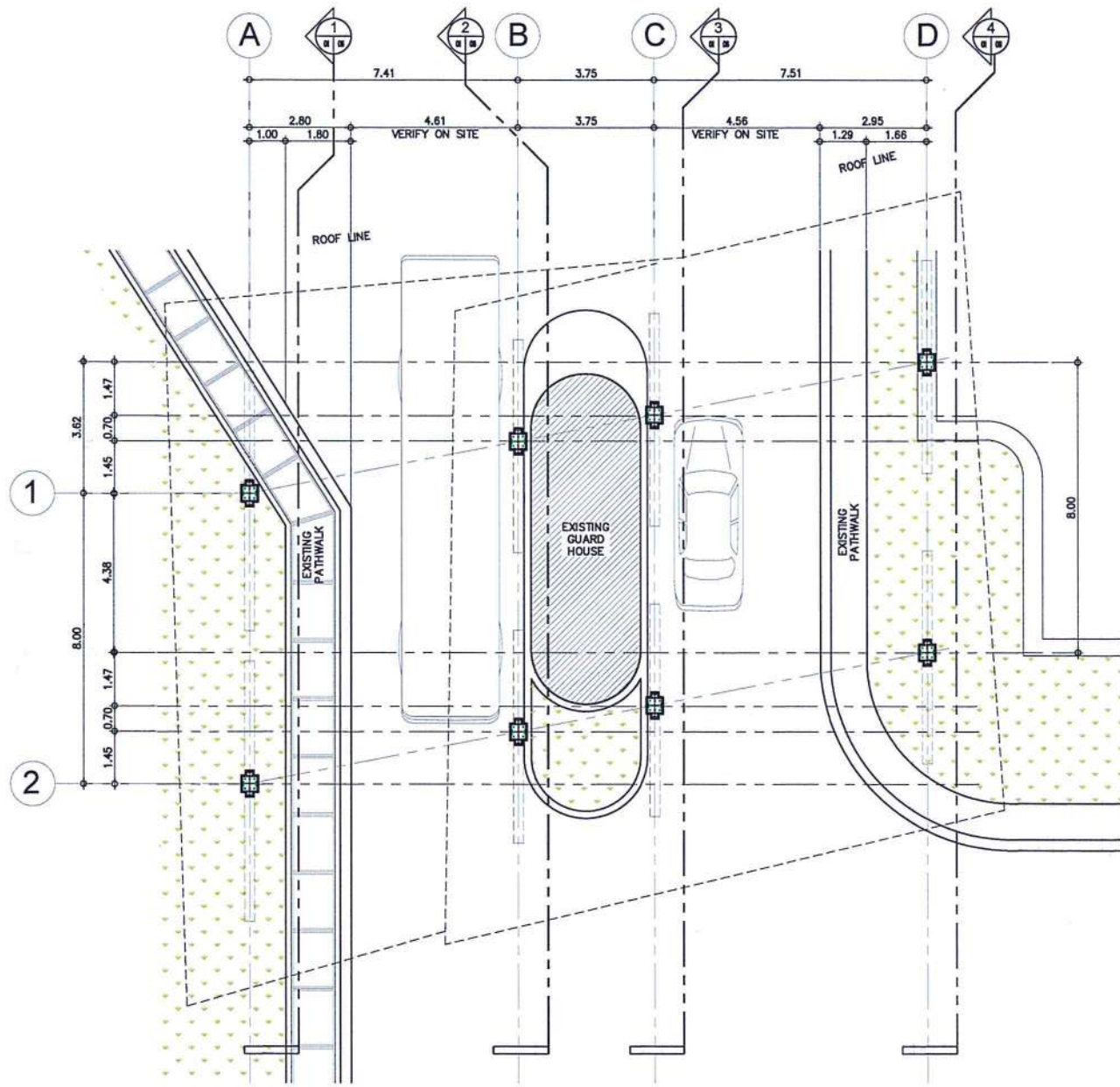
PROVISION OF COVERED SHED AT MAIN GATE

LOCATION:

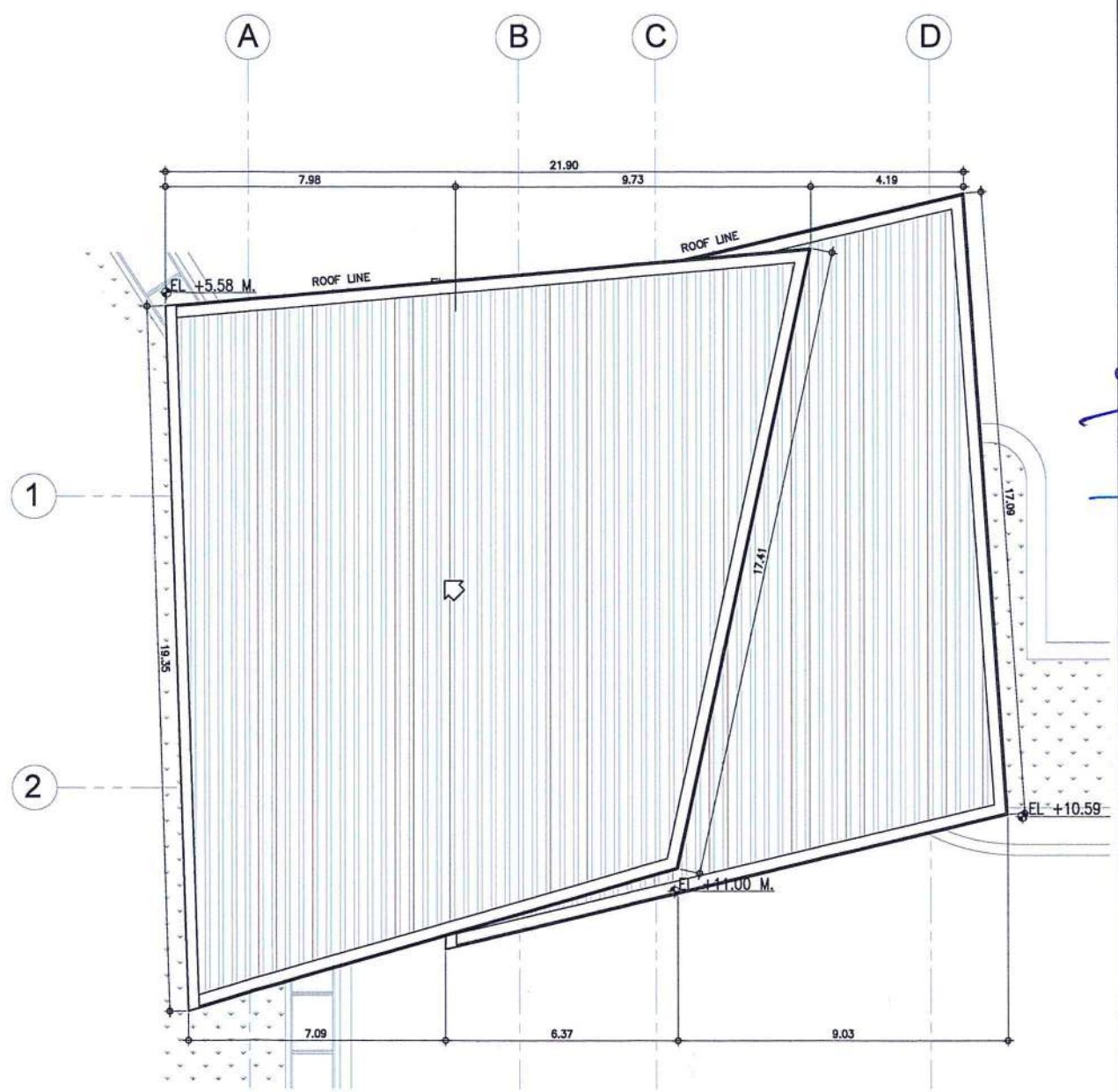
BICOL INTERNATIONAL AIRPORT  
DARAGA, ALBAY

SHEET CONTENTS:  
- FLOOR PLAN  
- ROOF PLAN

DRAWING SCALE: AS SHOWN  
SHEET NO: 02



1 FLOOR PLAN  
02 02 SCALE: 1 : 100 M



2 ROOF PLAN  
02 02 SCALE: 1 : 100 M





CIVIL AVIATION AUTHORITY OF THE PHILIPPINES  
MANILA, 1000

THIS DRAWING IS AN EXCLUSIVE PROPERTY  
OF CIVIL AVIATION AUTHORITY OF THE  
PHILIPPINES AND MUST NOT BE REPRODUCED,  
EXHIBITED, LOANED NOR COPIED IN PART OR  
IN WHOLE WITHOUT PROPER PERMISSION  
AND/OR WRITTEN CONSENT FROM THE CAA  
DIRECTOR GENERAL.

AERODROME DEVELOPMENT  
AND MANAGEMENT SERVICE

INFRASTRUCTURE DEVELOPMENT  
AND DESIGN DIVISION

DESIGN STAFF:	INITIAL / DATE
DESIGNED BY:	IDDD
DRAWN BY:	JCCS
CHECKED BY:	FMN
	EPS


REVIEWED BY:

  
**EMERSON P. SALAS**  
Supervising Aerodrome Engineer, IDDD-ADMS

SUBMITTED BY:

  
**ARNEL F. BORLADO**  
Department Manager III, AED-ADMS

RECOMMENDED APPROVAL:

  
**LT COL. VALENTINO A. DIONELA PAF (RET)**  
ADG II, ADMS

APPROVED:

  
**CAPTAIN MANUEL ANTONIO L. TAMAYO**  
Director General

NOTES / REVISIONS:

PROJECT TITLE:

PROVISION OF COVERED  
SHED AT MAIN GATE

LOCATION:

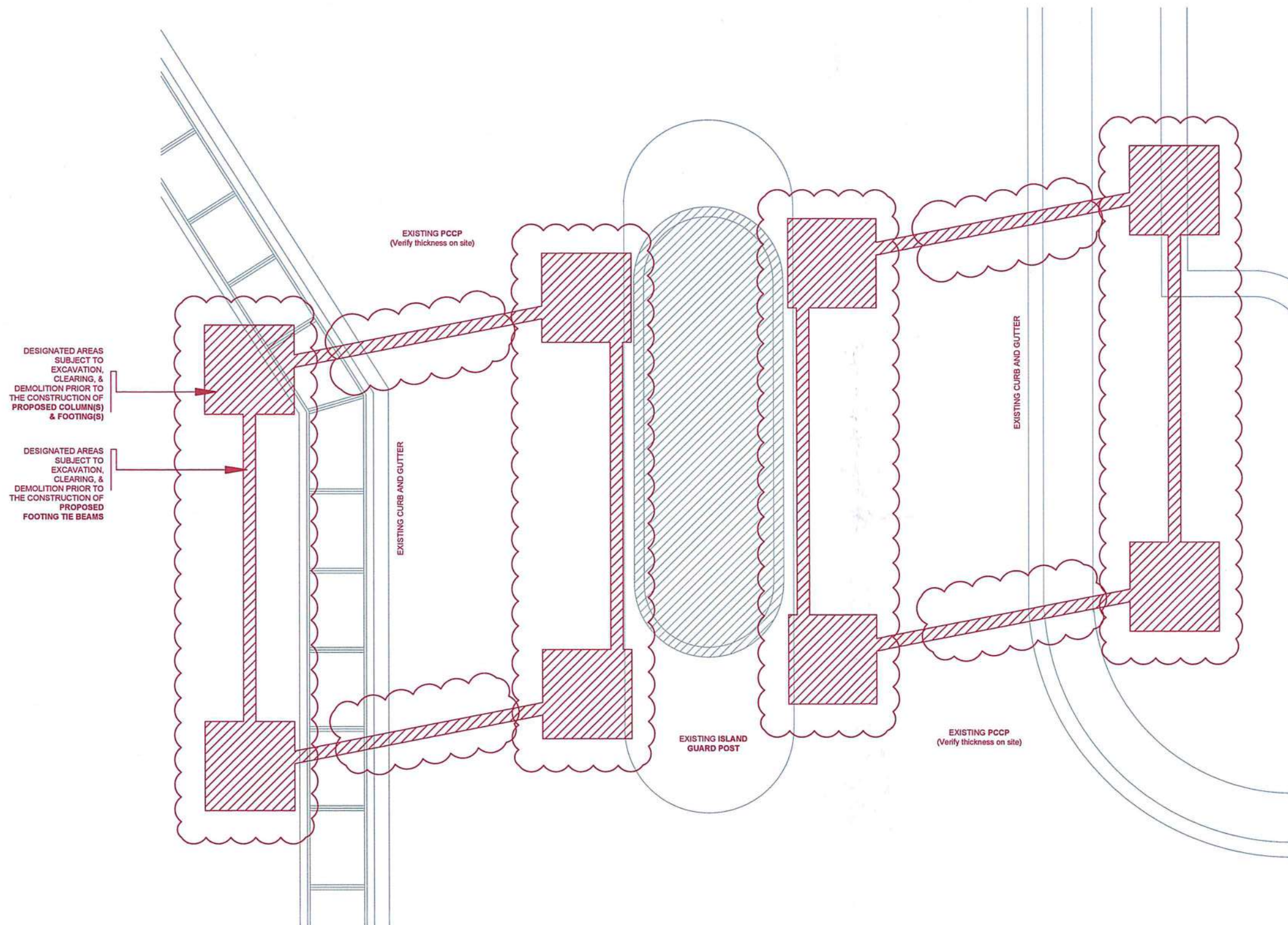
BICOL INTERNATIONAL  
AIRPORT  
DARAGA, ALBAY

SHEET CONTENTS:

- DEMOLITION PLAN

DRAWING SCALE: SHEET NO:

AS SHOWN



1 DEMOLITION PLAN  
SCALE: 1 : 50 M





CIVIL AVIATION AUTHORITY OF THE PHILIPPINES  
1000, 1000, 1000, 1000

THIS DRAWING IS AN EXCLUSIVE PROPERTY  
OF CIVIL AVIATION AUTHORITY OF THE  
PHILIPPINES AND MUST NOT BE REPRODUCED,  
EXHIBITED, LOANED NOR COPIED IN PART OR  
IN WHOLE WITHOUT PROPER PERMISSION  
AND/OR WRITTEN CONSENT FROM THE CAAP  
DIRECTOR GENERAL.

AERODROME DEVELOPMENT  
AND MANAGEMENT SERVICE

INFRASTRUCTURE DEVELOPMENT  
AND DESIGN DIVISION

DESIGN STAFF:	INITIAL / DATE
DESIGNED BY:	IDDD
DRAWN BY:	JCCS
CHECKED BY:	FMN
	EPS

REVIEWED BY:  
  
EMERSON P. SALAS  
Acting Division Chief III, IDDD-ADMS

SUBMITTED BY:  
  
ARNEL F. BORLADO  
Department Manager III, AED-ADMS

RECOMMENDED APPROVAL:  
  
LT COL VALENTINO A. DIONELA PAF (RET)  
ADG II, ADMS

APPROVED:  
  
CAPTAIN MANUEL ANTONIO L. TAMAYO  
Major General

NOTES / REVISIONS:  
1.   
2.   
3.   
4.   
5.   
6.   
7.   
8.   
9.   
10.   
11.   
12.   
13.   
14.   
15.   
16.   
17.   
18.   
19.   
20.   
21.   
22.   
23.   
24.   
25.   
26.   
27.   
28.   
29.   
30.   
31.   
32.   
33.   
34.   
35.   
36.   
37.   
38.   
39.   
40.   
41.   
42.   
43.   
44.   
45.   
46.   
47.   
48.   
49.   
50.   
51.   
52.   
53.   
54.   
55.   
56.   
57.   
58.   
59.   
60.   
61.   
62.   
63.   
64.   
65.   
66.   
67.   
68.   
69.   
70.   
71.   
72.   
73.   
74.   
75.   
76.   
77.   
78.   
79.   
80.   
81.   
82.   
83.   
84.   
85.   
86.   
87.   
88.   
89.   
90.   
91.   
92.   
93.   
94.   
95.   
96.   
97.   
98.   
99.   
100.   
101.   
102.   
103.   
104.   
105.   
106.   
107.   
108.   
109.   
110.   
111.   
112.   
113.   
114.   
115.   
116.   
117.   
118.   
119.   
120.   
121.   
122.   
123.   
124.   
125.   
126.   
127.   
128.   
129.   
130.   
131.   
132.   
133.   
134.   
135.   
136.   
137.   
138.   
139.   
140.   
141.   
142.   
143.   
144.   
145.   
146.   
147.   
148.   
149.   
150.   
151.   
152.   
153.   
154.   
155.   
156.   
157.   
158.   
159.   
160.   
161.   
162.   
163.   
164.   
165.   
166.   
167.   
168.   
169.   
170.   
171.   
172.   
173.   
174.   
175.   
176.   
177.   
178.   
179.   
180.   
181.   
182.   
183.   
184.   
185.   
186.   
187.   
188.   
189.   
190.   
191.   
192.   
193.   
194.   
195.   
196.   
197.   
198.   
199.   
200.   
201.   
202.   
203.   
204.   
205.   
206.   
207.   
208.   
209.   
210.   
211.   
212.   
213.   
214.   
215.   
216.   
217.   
218.   
219.   
220.   
221.   
222.   
223.   
224.   
225.   
226.   
227.   
228.   
229.   
230.   
231.   
232.   
233.   
234.   
235.   
236.   
237.   
238.   
239.   
240.   
241.   
242.   
243.   
244.   
245.   
246.   
247.   
248.   
249.   
250.   
251.   
252.   
253.   
254.   
255.   
256.   
257.   
258.   
259.   
260.   
261.   
262.   
263.   
264.   
265.   
266.   
267.   
268.   
269.   
270.   
271.   
272.   
273.   
274.   
275.   
276.   
277.   
278.   
279.   
280.   
281.   
282.   
283.   
284.   
285.   
286.   
287.   
288.   
289.   
290.   
291.   
292.   
293.   
294.   
295.   
296.   
297.   
298.   
299.   
300.   
301.   
302.   
303.   
304.   
305.   
306.   
307.   
308.   
309.   
310.   
311.   
312.   
313.   
314.   
315.   
316.   
317.   
318.   
319.   
320.   
321.   
322.   
323.   
324.   
325.   
326.   
327.   
328.   
329.   
330.   
331.   
332.   
333.   
334.   
335.   
336.   
337.   
338.   
339.   
340.   
341.   
342.   
343.   
344.   
345.   
346.   
347.   
348.   
349.   
350.   
351.   
352.   
353.   
354.   
355.   
356.   
357.   
358.   
359.   
360.   
361.   
362.   
363.   
364.   
365.   
366.   
367.   
368.   
369.   
370.   
371.   
372.   
373.   
374.   
375.   
376.   
377.   
378.   
379.   
380.   
381.   
382.   
383.   
384.   
385.   
386.   
387.   
388.   
389.   
390.   
391.   
392.   
393.   
394.   
395.   
396.   
397.   
398.   
399.   
400.   
401.   
402.   
403.   
404.   
405.   
406.   
407.   
408.   
409.   
410.   
411.   
412.   
413.   
414.   
415.   
416.   
417.   
418.   
419.   
420.   
421.   
422.   
423.   
424.   
425.   
426.   
427.   
428.   
429.   
430.   
431.   
432.   
433.   
434.   
435.   
436.   
437.   
438.   
439.   
440.   
441.   
442.   
443.   
444.   
445.   
446.   
447.   
448.   
449.   
450.   
451.   
452.   
453.   
454.   
455.   
456.   
457.   
458.   
459.   
460.   
461.   
462.   
463.   
464.   
465.   
466.   
467.   
468.   
469.   
470.   
471.   
472.   
473.   
474.   
475.   
476.   
477.   
478.   
479.   
480.   
481.   
482.   
483.   
484.   
485.   
486.   
487.   
488.   
489.   
490.   
491.   
492.   
493.   
494.   
495.   
496.   
497.   
498.   
499.   
500.   
501.   
502.   
503.   
504.   
505.   
506.   
507.   
508.   
509.   
510.   
511.   
512.   
513.   
514.   
515.   
516.   
517.   
518.   
519.   
520.   
521.   
522.   
523.   
524.   
525.   
526.   
527.   
528.   
529.   
530.   
531.   
532.   
533.   
534.   
535.   
536.   
537.   
538.   
539.   
540.   
541.   
542.   
543.   
544.   
545.   
546.   
547.   
548.   
549.   
550.   
551.   
552.   
553.   
554.   
555.   
556.   
557.   
558.   
559.   
560.   
561.   
562.   
563.   
564.   
565.   
566.   
567.   
568.   
569.   
570.   
571.   
572.   
573.   
574.   
575.   
576.   
577.   
578.   
579.   
580.   
581.   
582.   
583.   
584.   
585.   
586.   
587.   
588.   
589.   
590.   
591.   
592.   
593.   
594.   
595.   
596.   
597.   
598.   
599.   
600.   
601.   
602.   
603.   
604.   
605.   
606.   
607.   
608.   
609.   
610.   
611.   
612.   
613.   
614.   
615.   
616.   
617.   
618.   
619.   
620.   
621.   
622.   
623.   
624.   
625.   
626.   
627.   
628.   
629.   
630.   
631.   
632.   
633.   
634.   
635.   
636.   
637.   
638.   
639.   
640.   
641.   
642.   
643.   
644.   
645.   
646.   
647.   
648.   
649.   
650.   
651.   
652.   
653.   
654.   
655.   
656.   
657.   
658.   
659.   
660.   
661.   
662.   
663.   
664.   
665.   
666.   
667.   
668.   
669.   
670.   
671.   
672.   
673.   
674.   
675.   
676.   
677.   
678.   
679.   
680.   
681.   
682.   
683.   
684.   
685.   
686.   
687.   
688.   
689.   
690.   
691.   
692.   
693.   
694.   
695.   
696.   
697.   
698.   
699.   
700.   
701.   
702.   
703.   
704.   
705.   
706.   
707.   
708.   
709.   
710.   
711.   
712.   
713.   
714.   
715.   
716.   
717.   
718.   
719.   
720.   
721.   
722.   
723.   
724.   
725.   
726.   
727.   
728.   
729.   
730.   
731.   
732.   
733.   
734.   
735.   
736.   
737.   
738.   
739.   
740.   
741.   
742.   
743.   
744.   
745.   
746.   
747.   
748.   
749.   
750.   
751.   
752.   
753.   
754.   
755.   
756.   
757.   
758.   
759.   
760.   
761.   
762.   
763.   
764.   
765.   
766.   
767.   
768.   
769.   
770.   
771.   
772.   
773.   
774.   
775.   
776.   
777.   
778.   
779.   
780.   
781.   
782.   
783.   
784.   
785.   
786.   
787.   
788.   
789.   
790.   
791.   
792.   
793.   
794.   
795.   
796.   
797.   
798.   
799.   
800.   
801.   
802.   
803.   
804.   
805.   
806.   
807.   
808.   
809.   
810.   
811.   
812.   
813.   
814.   
815.   
816.   
817.   
818.   
819.   
820.   
821.   
822.   
823.   
824.   
825.   
826.   
827.   
828.   
829.   
830.   
831.   
832.   
833.   
834.   
835.   
836.   
837.   
838.   
839.   
840.   
841.   
842.   
843.   
844.   
845.   
846.   
847.   
848.   
849.   
850.   
851.   
852.   
853.   
854.   
855.   
856.   
857.   
858.   
859.   
860.   
861.   
862.   
863.   
864.   
865.   
866.   
867.   
868.   
869.   
870.   
871.   
872.   
873.   
874.   
875.   
876.   
877.   
878.   
879.   
880.   
881.   
882.   
883.   
884.   
885.   
886.   
887.   
888.   
889.   
890.   
891.   
892.   
893.   
894.   
895.   
896.   
897.   
898.   
899.   
900.   
901.   
902.   
903.   
904.   
905.   
906.   
907.   
908.   
909.   
910.   
911.   
912.   
913.   
914.   
915.   
916.   
917.   
918.   
919.   
920.   
921.   
922.   
923.   
924.   
925.   
926.   
927.   
928.   
929.   
930.   
931.   
932.   
933.   
934.   
935.   
936.   
937.   
938.   
939.   
940.   
941.   
942.   
943.   
944.   
945.   
946.   
947.   
948.   
949.   
950.   
951.   
952.   
953.   
954.   
955.   
956.   
957.   
958.   
959.   
960.   
961.   
962.   
963.   
964.   
965.   
966.   
967.   
968.   
969.   
970.   
971.   
972.   
973.   
974.   
975.   
976.   
977.   
978.   
979.   
980.   
981.   
982.   
983.   
984.   
985.   
986.   
987.   
988.   
989.   
990.   
991.   
992.   
993.   
994.   
995.   
996.   
997.   
998.   
999.   
1000.   
1001.   
1002.   
1003.   
1004.   
1005.   
1006.   
1007.   
1008.   
1009.   
1010.   
1011.   
1012.   
1013.   
1014.   
1015.   
1016.   
1017.   
1018.   
1019.   
1020.   
1021.   
1022.   
1023.   
1024.   
1025.   
1026.   
1027.   
1028.   
1029.   
1030.   
1031.   
1032.   
1033.   
1034.   
1035.   
1036.   
1037.   
1038.   
1039.   
1040.   
1041.   
1042.   
1043.   
1044.   
1045.   
1046.   
1047.   
1048.   
1049.   
1050.   
1051.   
1052.   
1053.   
1054.   
1055.   
1056.   
1057.   
1058.   
1059.   
1060.   
1061.   
1062.   
1063.   
1064.   
1065.   
1066.   
1067.   
1068.   
1069.   
1070.   
1071.   
1072.   
1073.   
1074.   
1075.   
1076.   
1077.   
1078.   
1079.   
1080.   
1081.   
1082.   
1083.   
1084.   
1085.   
1086.   
1087.   
1088.   
1089.   
1090.   
1091.   
1092.   
1093.   
1094.   
1095.   
1096.   
1097.   
1098.   
1099.   
1100.   
1101.   
1102.   
1103.   
1104.   
1105.   
1106.   
1107.   
1108.   
1109.   
1110.   
1111.   
1112.   
1113.   
1114.   
1115.   
1116.   
1117.   
1118.   
1119.   
1120.   
1121.   
1122.   
1123.   
1124.   
1125.   
1126.   
1127.   
1128.   
1129.   
1130.   
1131.   
1132.   
1133.   
1134.   
1135.   
1136.   
1137.   
1138.   
1139.   
1140.   
1141.   
1142.   
1143.   
1144.   
1145.   
1146.   
1147.   
1148.   
1149.   
1150.   
1151.   
1152.   
1153.   
1154.   
1155.   
1156.   
1157.   
1158.   
1159.   
1160.   
1161.   
1162.   
1163.   
1164.   
1165.   
1166.   
1167.   
1168.   
1169.   
1170.   
1171.   
1172.   
1173.   
1174.   
1175.   
1176.   
1177.   
1178.   
1179.   
1180.   
1181.   
1182.   
1183.   
1184.   
1185.   
1186.   
1187.   
1188.   
1189.   
1190.   
1191.   
1192.   
1193.   
1194.   
1195.   
1196.   
1197.   
1198.   
1199.   
1200.   
1201.   
1202.   
1203.   
1204.   
1205.   
1206.   
1207.   
1208.   
1209.   
1210.   
1211.   
1212.   
1213.   
1214.   
1215.   
1216.   
1217.   
1218.   
1219.   
1220.   
1221.   
1222.   
1223.   
1224.   
1225.   
1226.   
1227.   
1228.   
1229.   
1230.   
1231.   
1232.   
1233.   
1234.   
1235.   
1236.   
1237.   
1238.   
1239.   
1240.   
1241.   
1242.   
1243.   
1244.   
1245.   
1246.   
1247.   
1248.   
1249.   
1250.   
1251.   
1252.   
1253.   
1254.   
1255.   
1256.   
1257.   
1258.   
1259.   
1260.   
1261.   
1262.   
1263.   
1264.   
1265.   
1266.   
1267.   
1268.   
1269.   
1270.   
1271.   
1272.   
1273.   
1274.   
1275.   
1276.   
1277.   
1278.   
1279.   
1280.   
1281.   
1282.   
1283.   
1284.   
1285.   
1286.   
1287.   
1288.   
1289.   
1290.   
1291.   
1292.   
1293.   
1294.   
1295.   
1296.   
1297.   
1298.   
1299.   
1300.   
1301.   
1302.   
1303.   
1304.   
1305.   
1306.   
1307.   
1308.   
1309.   
1310.   
1311.   
1312.   
1313.   
1314.   
1315.   
1316.   
1317.   
1318.   
1319.   
1320.   
1321.   
1322.   
1323.   
1324.   
1325.   
1326.   
1327.   
1328.   
1329.   
1330.   
1331.   
1332.   
1333.   
1334.   
1335.   
1336.   
1337.   
1338.   
1339.   
1340.   
1341.   
1342.   
1343.   
1344.   
1345.   
1346.   
1347.   
1348.   
1349.   
1350.   
1351.   
1352.   
1353.   
1354.   
1355.   
1356.   
1357.   
1358.   
1359.   
1360.   
1361.   
1362.   
1363.   
1364.   
1365.   
1366.   
1367.   
1368.   
1369.   
1370.   
1371.   
1372.   
1373.   
1374.   
1375.   
1376.   
1377.   
1378.   
1379.   
1380.   
1381.   
1382.   
1383.   
1384.   
1385.   
1386.   
1387.   
1388.   
1389.   
1390.   
1391.   
1392.   
1393.   
1394.   
1395.   
1396.   
1397.   
1398.   
1399.   
1400.   
1401.   
1402.   
1403.   
1404.   
1405.   
1406.   
1407.   
1408.   
1409.   
1410.   
1411.   
1412.   
1413.   
1414.   
1415.   
1416.   
1417.   
1418.   
1419.   
1420.   
1421.   
1422.   
1423.   
1424.   
1425.   
1426.   
1427.   
1428.   
1429.   
1430.   
1431.   
1432.   
1433.   
1434.   
1435.   
1436.   
1437.   
1438.   
1439.   
1440.   
1441.   
1442.   
1443.   
1444.   
1445.   
1446.   
1447.   
1448.   
1449.   
1450.   
1451.   
1452.   
1453.   
1454.   
1455.   
1456.   
1457.   
1458.   
1459.   
1460.   
1461.   
1462.   
1463.   
1464.   
1465.   
1466.   
1467.   
1468.   
1469.   
1470.   
1471.   
1472.   
1473.   
1474.   
1475.   
1476.   
1477.   
1478.   
1479.   
1480.   
1481.   
1482.   
1483.   
1484.   
1485.   
1486.   
1487.   
1488.   
1489.   
1490.   
1491.   
1492.   
1493.   
1494.   
1495.   
1496.   
1497.   
1498.   
1499.   
1500.   
1501.   
1502.   
1503.   
1504.   
1505.   
1506.   
1507.   
1508.   
1509.   
1510.   
1511.   
1512.   
1513.   
1514.   
1515.   
1516.   
1517.   
1518.   
1519.   
1520.   
1521.   
1522.   
1523.   
1524.   
1525.   
1526.   
1527.   
1528.   
1529.   
1530.   
1531.   
1532.   
1533.   
1534.   
1535.   
1536.   
1537.   
1538.   
1539.   
1540.   
1541.   
1542.   
1543.   
1544.   
1545.   
1546.   
1547.   
1548.   
1549.   
1550.   
1551.   
1552.   
1553.   
1554.   
1555.   
1556.   
1557.   
1558.   
1559.   
1560.   
1561.   
1562.   
1563.   
1564.   
1565.   
1566.   
1567.   
1568.   
1569.   
1570.   
1571.   
1572.   
1573.   
1574.   
1575.   
1576.   
1577.   
1578.   
1579.   
1580.   
1581.   
1582.   
1583.   
1584.   
1585.   
1586.   
1587.   
1588.   
1589.   
1590.   
1591.





CIVIL AVIATION AUTHORITY OF THE PHILIPPINES  
NATIONAL INFRASTRUCTURE DEVELOPMENT

THIS DRAWING IS AN EXCLUSIVE PROPERTY  
OF CIVIL AVIATION AUTHORITY OF THE  
PHILIPPINES AND MUST NOT BE REPRODUCED,  
EXHIBITED, LOANED NOR COPIED IN PART OR  
IN WHOLE WITHOUT PROPER PERMISSION  
AND/OR WRITTEN CONSENT FROM THE CAAP  
DIRECTOR GENERAL.

AERODROME DEVELOPMENT  
AND MANAGEMENT SERVICE

INFRASTRUCTURE DEVELOPMENT  
AND DESIGN DIVISION

DESIGN STAFF:	INITIAL / DATE
DESIGNED BY:	IDDD
DRAWN BY:	JCCS
CHECKED BY:	FMN
	EPS

REVIEWED BY:

EMERSON P. SALAS  
Acting Division Chief III, IDDD-ADMS

SUBMITTED BY:

ARNEL F. BORLADO  
Department Manager III, AED-ADMS

RECOMMENDED APPROVAL:

LT COL. VALENTINO A. DIONELA PAF (RET)  
ADG II, ADMS

APPROVED:

CAPTAIN MANUEL ANTONIO L. TAMAYO  
Division Chief, IDDD-ADMS

NOTES / REVISIONS:

PROJECT TITLE:

PROVISION OF COVERED  
SHED AT MAIN GATE

LOCATION:

BICOL INTERNATIONAL  
AIRPORT  
DARAGA, ALBAY

SHEET CONTENTS:

- ROOF PLAN  
- ROOF FRAMING PLAN

DRAWING SCALE:

AS SHOWN

SHEET NO:

GA 24  
PRE-PAINTED RIB  
TYPE ROOFING

STEEL TUBULAR  
FRAME

50mm x  
100mm x 6mm THK.  
C-PURLINS SPACED  
600mm O.C.

GIRDERS: W10X12  
STEEL WIDE FLANGE  
IN ALUMINUM  
CLADDING PANEL  
ENVELOPE

GA 24  
PRE-PAINTED  
G.I. FLASHING

12mm  $\phi$  STEEL  
PLAIN REINFORCING  
BAR SAG ROD W/  
STEEL TURNBUCKLE

1  
GIRDERS: W10X12  
STEEL WIDE FLANGE  
IN ALUMINUM  
CLADDING PANEL  
ENVELOPE

MAIN COLUMN: W14X22  
STEEL WIDE FLANGE  
WELDED IN ALUMINUM  
CLADDING PANEL ENVELOPE

2  
STEEL TUBULAR  
FRAME

10mm  $\phi$  PLAIN  
REINFORCING BAR  
FOR CROSS-BRACING

1 ROOF 'B' PLAN  
SCALE: 1 : 100 M

2 ROOF 'B' FRAMING PLAN  
SCALE: 1 : 100 M





CIVIL AVIATION AUTHORITY OF THE PHILIPPINES

THIS DRAWING IS AN EXCLUSIVE PROPERTY OF CIVIL AVIATION AUTHORITY OF THE PHILIPPINES AND MUST NOT BE REPRODUCED, EXHIBITED, LOANED NOR COPIED IN PART OR IN WHOLE WITHOUT PROPER PERMISSION AND/OR WRITTEN CONSENT FROM THE CAAP DIRECTOR GENERAL.

AERODROME DEVELOPMENT AND MANAGEMENT SERVICE

INFRASTRUCTURE DEVELOPMENT AND DESIGN DIVISION

DESIGN STAFF:	INITIAL / DATE
DESIGNED BY:	IDDD
DRAWN BY:	JCCS
CHECKED BY:	FMN
	EPS

REVIEWED BY:  
  
EMERSON P. SALAS  
Supervising Aerodrome Engineer, IDDD-ADMS

SUBMITTED BY:  
  
ARNEL F. BORLADO  
Department Manager III, AED-ADMS

RECOMMENDED APPROVAL:  
  
LT COL VALENTINO A. DIONELA PAF (RET)  
ADG II, ADMS

APPROVED:  
  
CAPTAIN MANUEL ANTONIO L. TAMAYO  
Director General

NOTES / REVISIONS:

PROJECT TITLE:

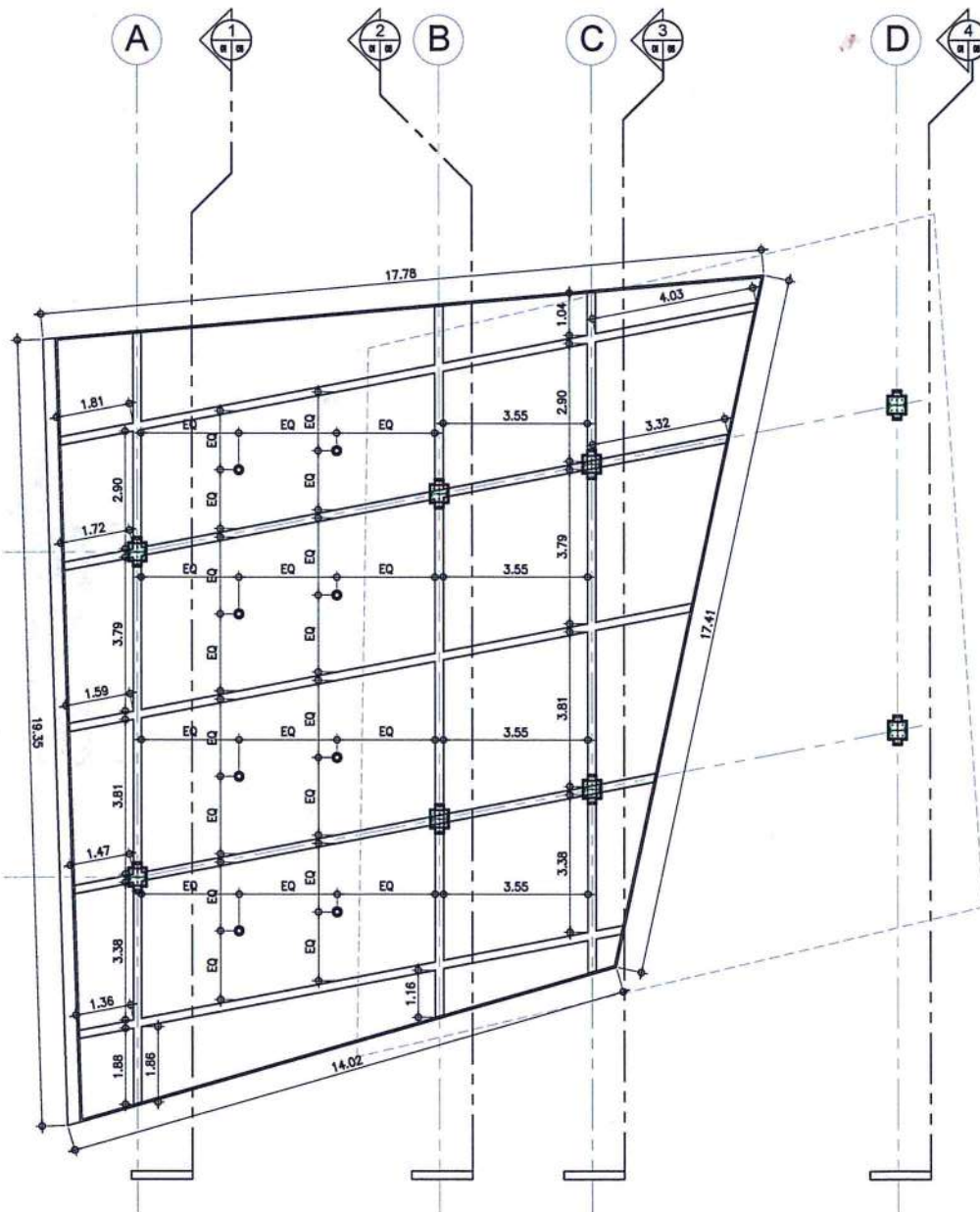
PROVISION OF COVERED SHED AT MAIN GATE

LOCATION:

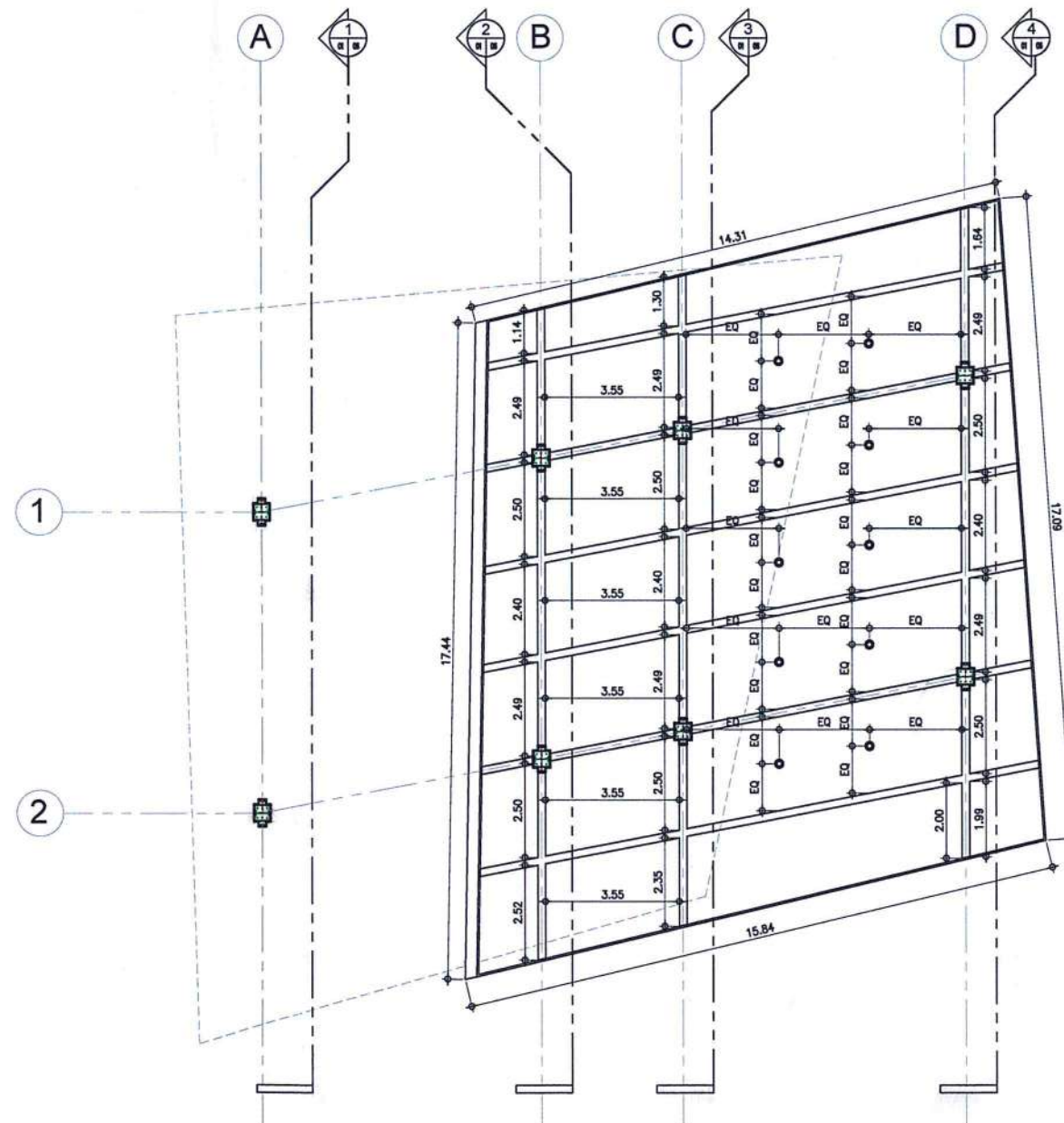
BICOL INTERNATIONAL AIRPORT  
DARAGA, ALBAY

SHEET CONTENTS:  
- REFLECTED CEILING PLANS

DRAWING SCALE:	SHEET NO:
AS SHOWN	03



1 ROOF 'A'  
REFLECTED CEILING PLAN  
SCALE: 1: 100 M



2 ROOF 'B'  
REFLECTED CEILING PLAN  
SCALE: 1: 100 M

LEGEND:

⊙ SURFACE MOUNTED LED DOWNLIGHT





CIVIL AVIATION AUTHORITY OF THE PHILIPPINES


THIS DRAWING IS AN EXCLUSIVE PROPERTY OF CIVIL AVIATION AUTHORITY OF THE PHILIPPINES AND MUST NOT BE REPRODUCED, EXHIBITED, LOANED NOR COPIED IN PART OR IN WHOLE WITHOUT PROPER PERMISSION AND/OR WRITTEN CONSENT FROM THE CAAP DIRECTOR GENERAL.

AERODROME DEVELOPMENT AND MANAGEMENT SERVICE


INFRASTRUCTURE DEVELOPMENT AND DESIGN DIVISION

DESIGN STAFF:	INITIAL / DATE
DESIGNED BY:	IDDD
DRAWN BY:	JCCS
CHECKED BY:	FMN
	EPS

REVIEWED BY:

  
EMERSON P. SALAS  
Supervising Aerodrome Engineer, IDDD-ADMS


SUBMITTED BY:

  
ARNEL F. BORLADO  
Department Manager III, AED-ADMS

RECOMMENDED APPROVAL:

  
LT COL VALENTINO A. DIONELA PAF (RET)  
ADG II, ADMS

APPROVED:

  
CAPTAIN MANUEL ANTONIO L. TAMAYO

NOTES / REVISIONS:


PROJECT TITLE:

PROVISION OF COVERED SHED AT MAIN GATE

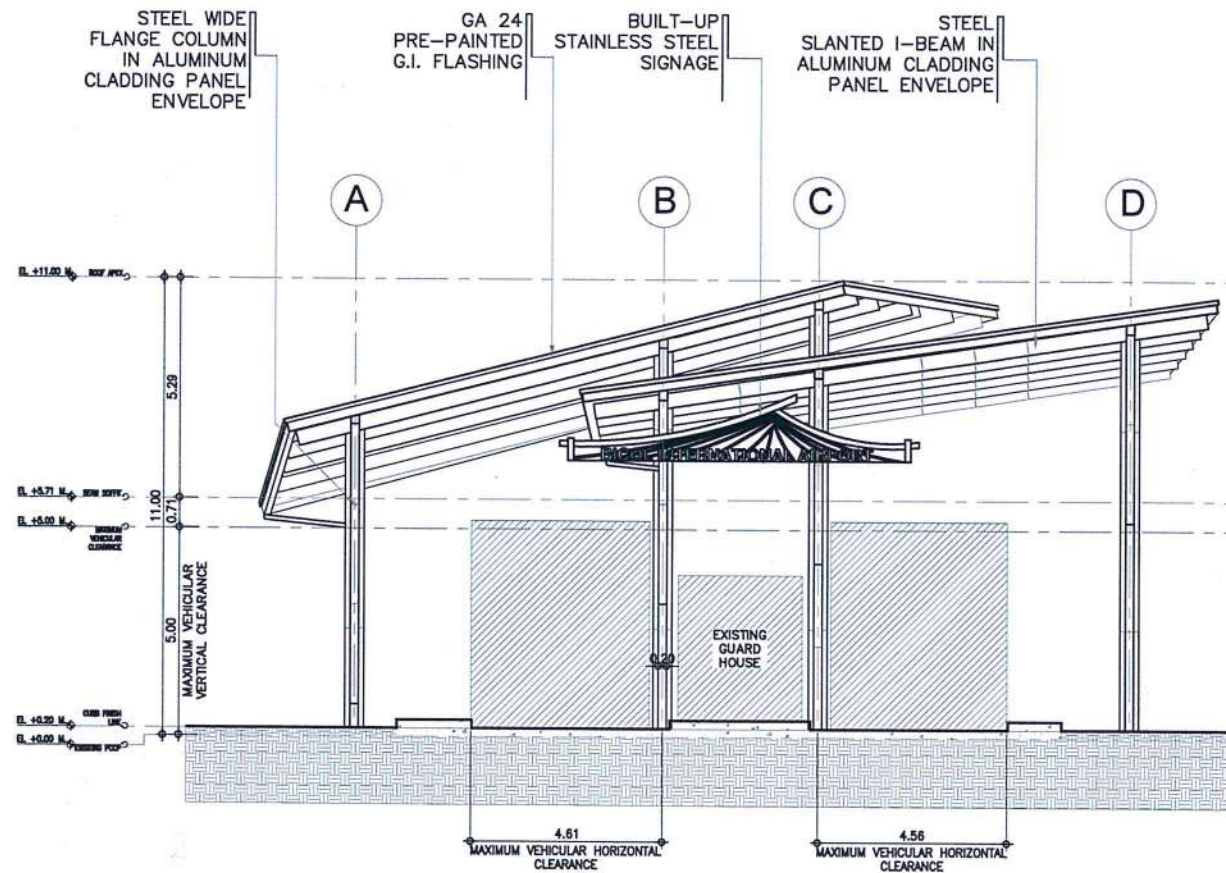
LOCATION:

BICOL INTERNATIONAL AIRPORT  
DARAGA, ALBAY

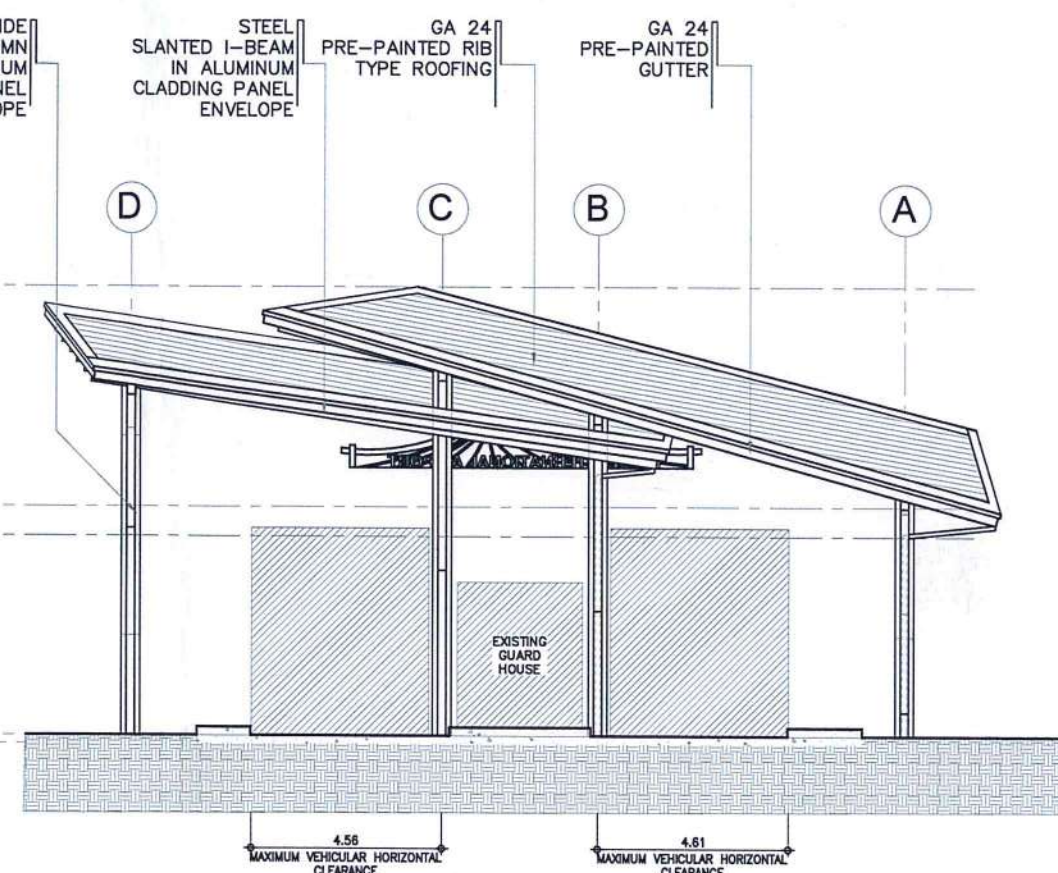
SHEET CONTENTS:

— ELEVATIONS

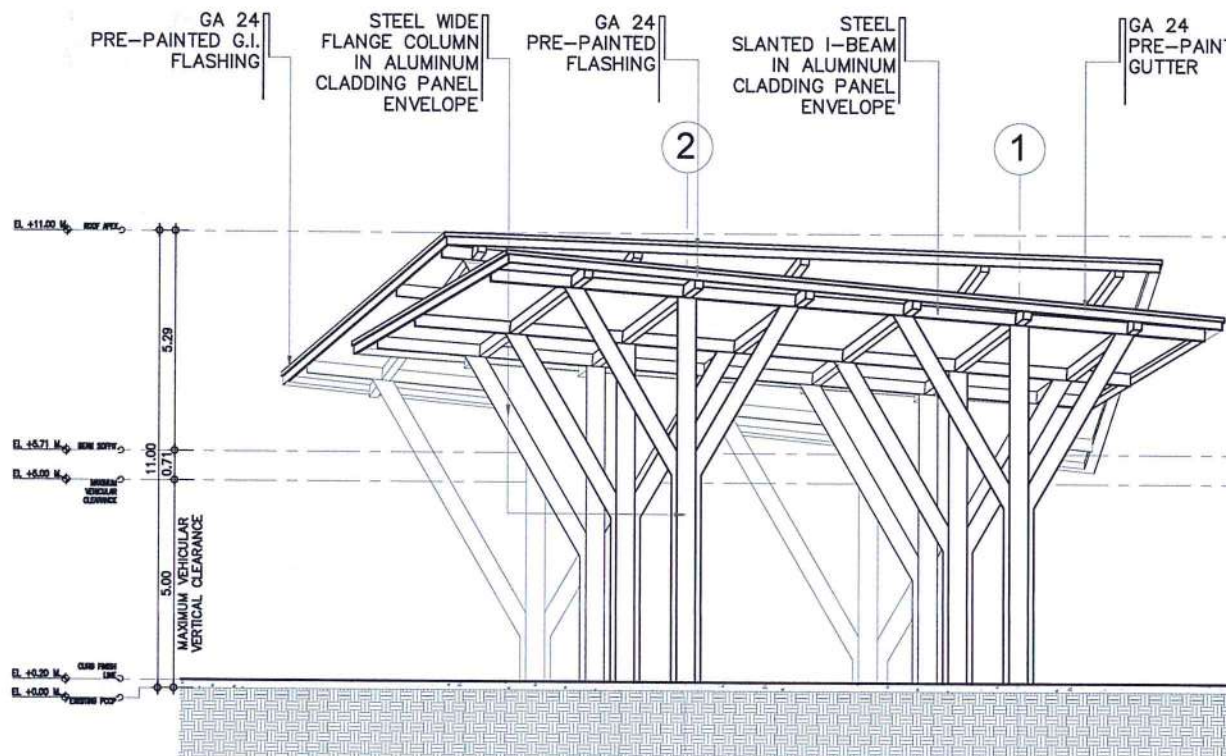
DRAWING SCALE:	SHEET NO:
AS SHOWN	05



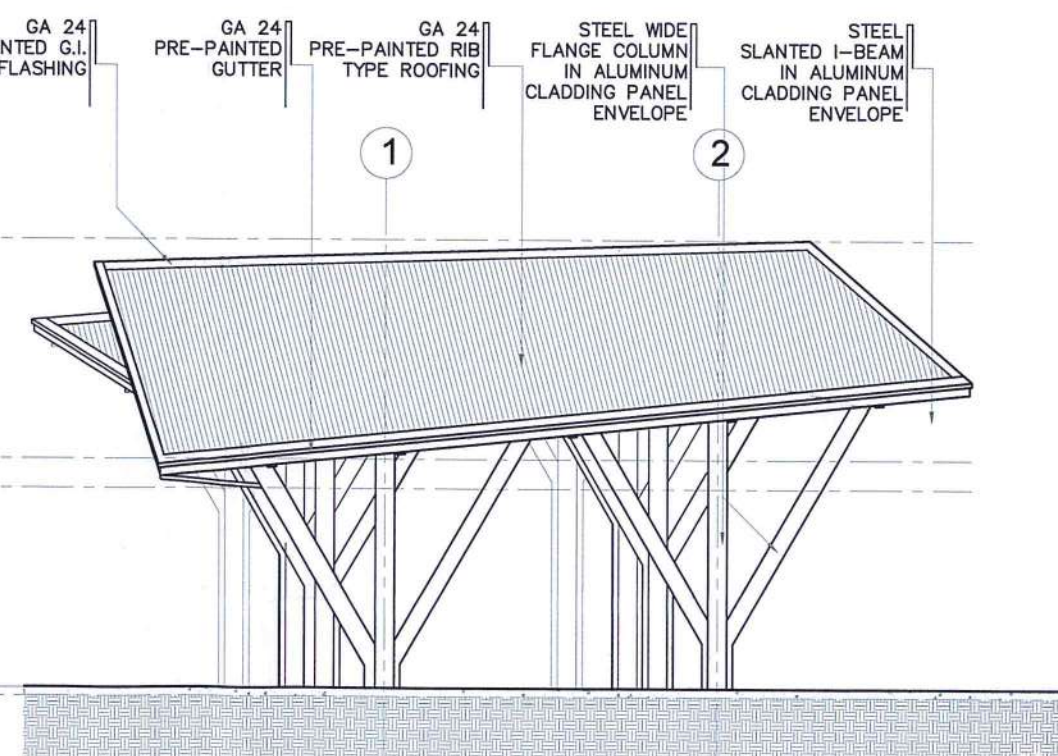
1 FRONT ELEVATION  
SCALE: 1 : 100 M



2 REAR ELEVATION  
SCALE: 1 : 100 M



3 RIGHT ELEVATION  
SCALE: 1 : 100 M

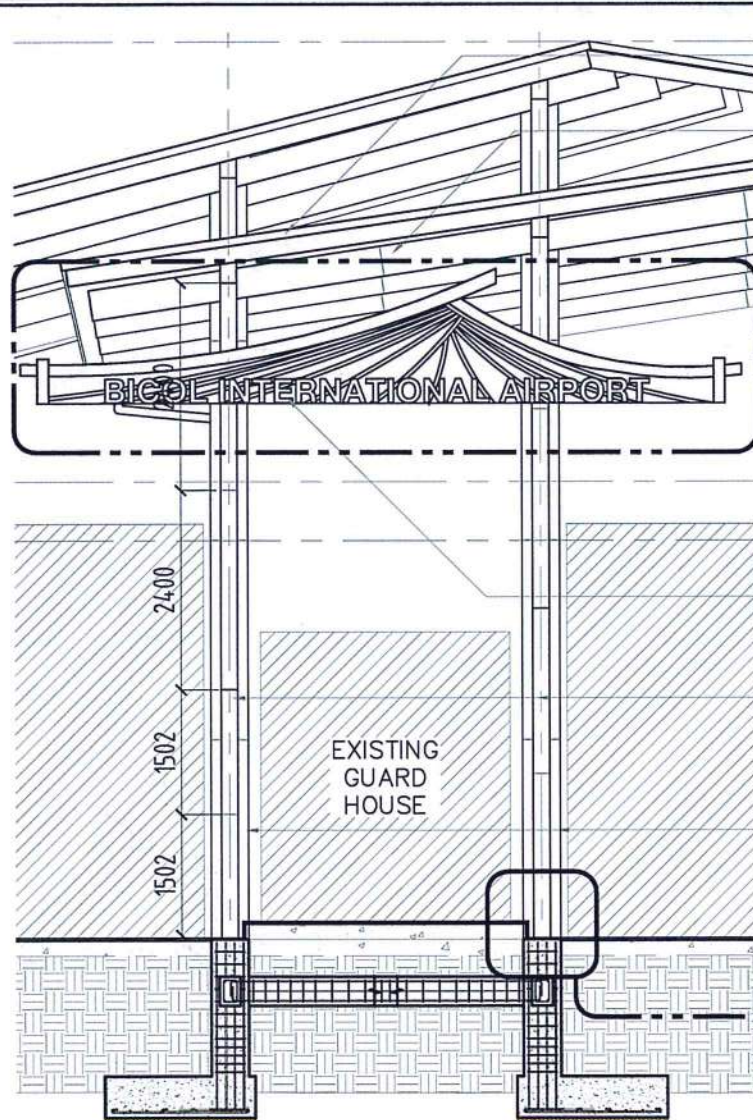


4 LEFT ELEVATION  
SCALE: 1 : 100 M

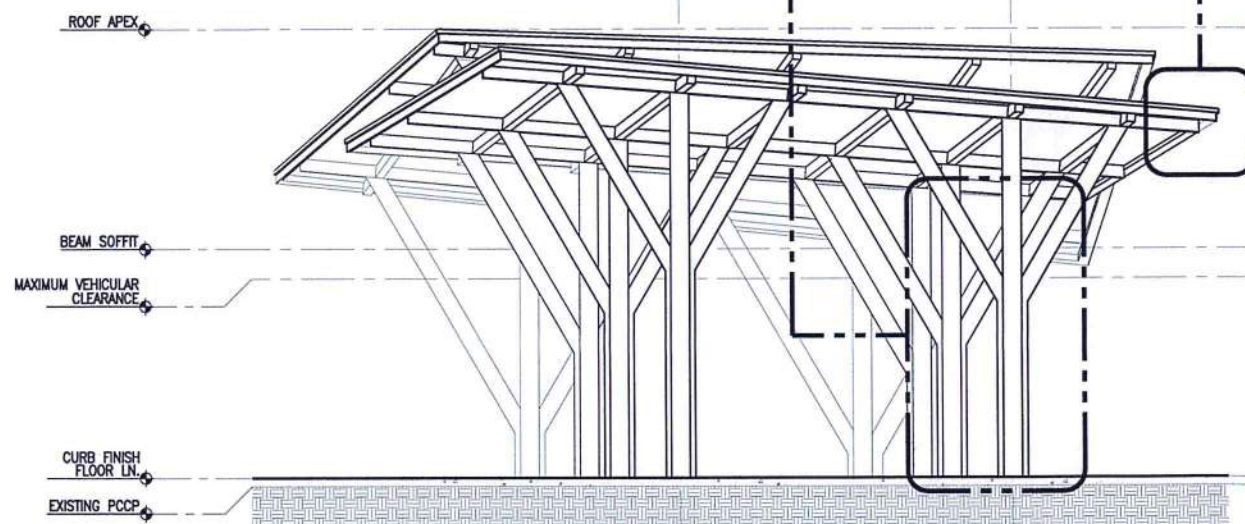






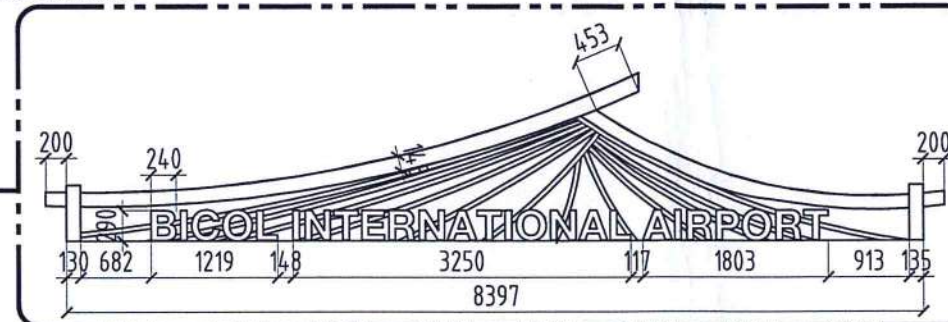


1 FRONT ELEVATION  
DETAILED ELEVATION  
SCALE: 1:50 M



2 RIGHT SIDE ELEVATION  
DETAILED ELEVATION  
SCALE: 1:100 M

GA 24  
PRE-PAINTED  
FLASHING  
GIRDERS: W10X12  
STEEL WIDE FLANGE IN  
ALUMINUM CLADDING  
PANEL ENVELOPE

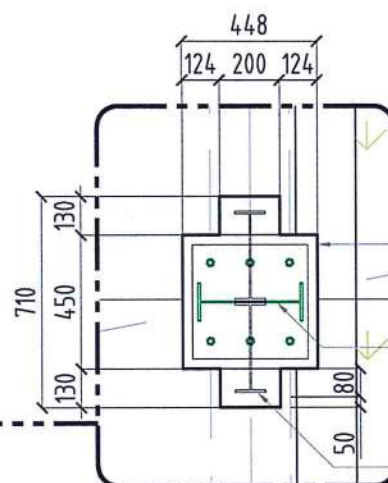


BUILT UP SIGNAGE  
SPOT DETAIL

BUILT-UP  
STAINLESS STEEL  
SIGNAGE

SECONDARY  
COLUMN: W12X14  
STEEL WIDE FLANGE  
IN ALUMINUM  
CLADDING PANEL  
ENVELOPE

MAIN COLUMN:  
W14X22 STEEL WIDE  
FLANGE WELDED IN  
ALUMINUM CLADDING  
PANEL ENVELOPE



SPOT DETAIL

ENVELOPE:  
ALUMINUM  
CLADDING  
PANEL

MAIN COLUMN:  
W14X22 STEEL WIDE  
FLANGE WELDED TO  
BASE PLATE (SEE  
STRUCTURAL DETAIL)

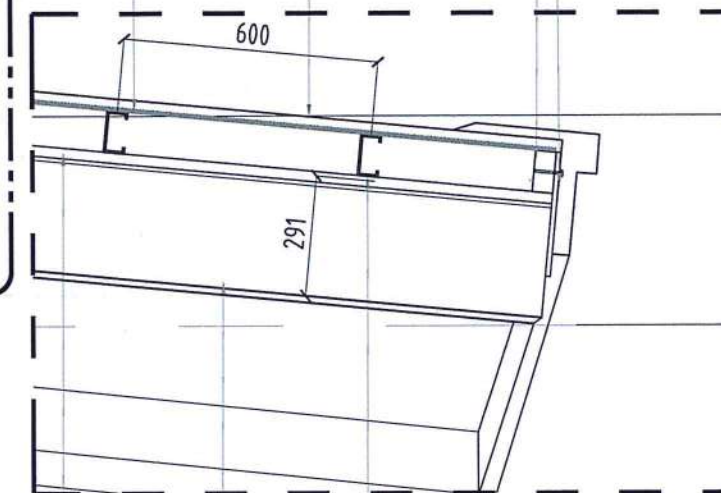
SECONDARY  
COLUMN:  
W12X14 STEEL  
WIDE FLANGE

FOIL FACED  
SINGLE-LAYER BUBBLE  
WRAP INSULATION ON  
GA24 CYCLONE WIRE  
MESH

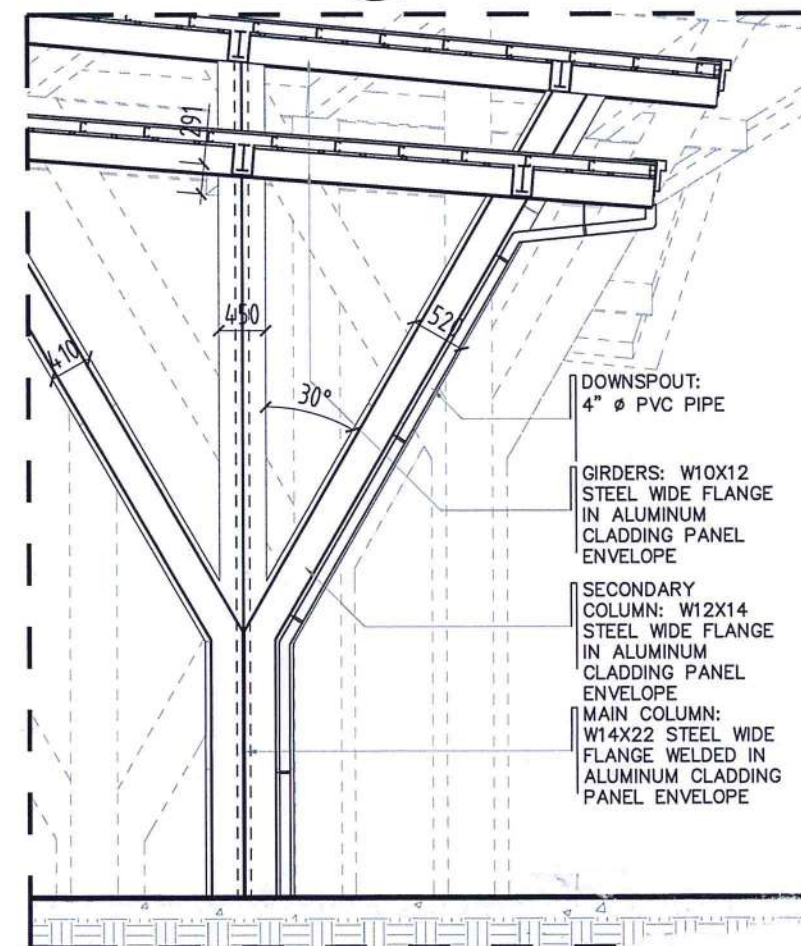
GA 24  
PRE-PAINTED  
RIB TYPE  
ROOFING

50mm x 150mm  
x 6mm THK.  
STEEL TUBULAR  
FRAME

GA 24  
PRE-PAINTED  
FLASHING ON  
12" X 12mm  
THK. FASCIA  
BOARD



3 DETAIL 'A'  
SCALE: 1:10 M



4 DETAIL 'B'  
SCALE: 1:25 M



CIVIL AVIATION AUTHORITY OF THE PHILIPPINES

THIS DRAWING IS AN EXCLUSIVE PROPERTY OF CIVIL AVIATION AUTHORITY OF THE PHILIPPINES AND MUST NOT BE REPRODUCED, EXHIBITED, LOANED NOR COPIED IN PART OR IN WHOLE WITHOUT PROPER PERMISSION AND/OR WRITTEN CONSENT FROM THE CAAP DIRECTOR GENERAL.

AERODROME DEVELOPMENT  
AND MANAGEMENT SERVICE

INFRASTRUCTURE DEVELOPMENT  
AND DESIGN DIVISION

DESIGN STAFF:	INITIAL / DATE
DESIGNED BY:	IDDD
DRAWN BY:	JCCS
CHECKED BY:	FMN
	EPS

REVIEWED BY:

EMERSON P. SALAS  
Supervising Aerodrome Engineer, IDDD-ADMS

SUBMITTED BY:

ARNEL F. BORRADO  
Department Manager II, AED-ADMS

RECOMMENDED APPROVAL:

LT COL VALENTINO A DIONELA PAF (RET)  
ADG II, ADMS

APPROVED:

CAPTAIN MANUEL ANTONIO L. TAMAYO  
Director General

NOTES / REVISIONS:

PROJECT TITLE:

PROVISION OF COVERED  
SHED AT MAIN GATE

LOCATION:

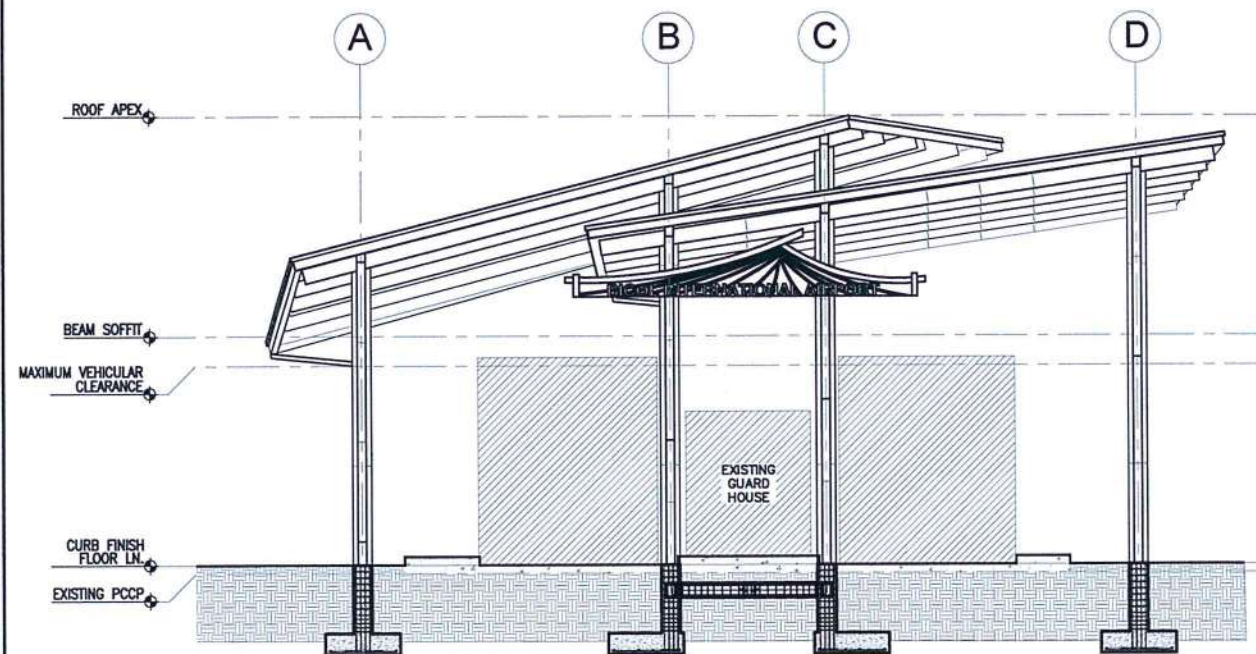
BICOL INTERNATIONAL  
AIRPORT  
DARAGA, ALBAY

SHEET CONTENTS:

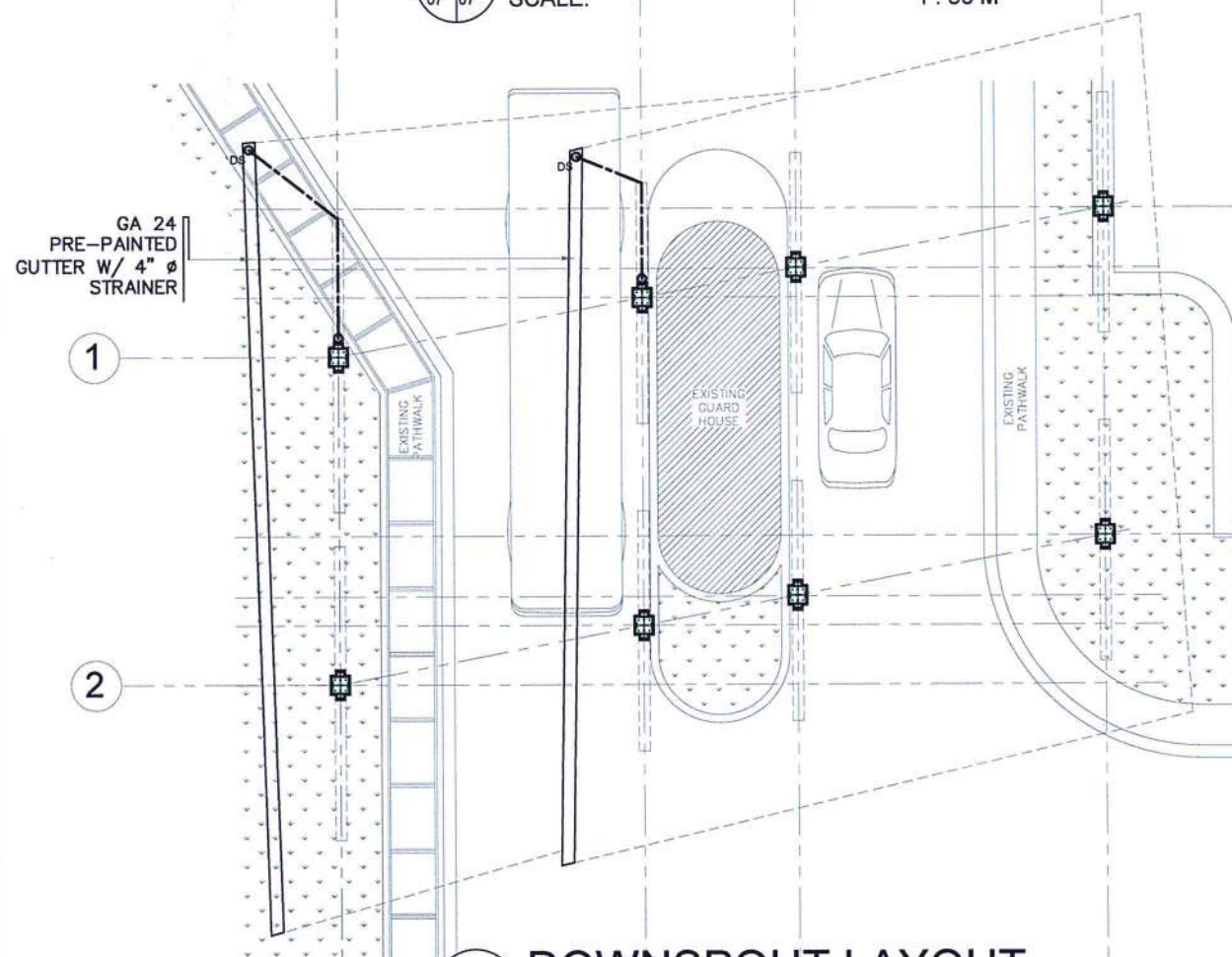
DETAILS

DRAWING SCALE:	SHEET NO.
AS SHOWN	07



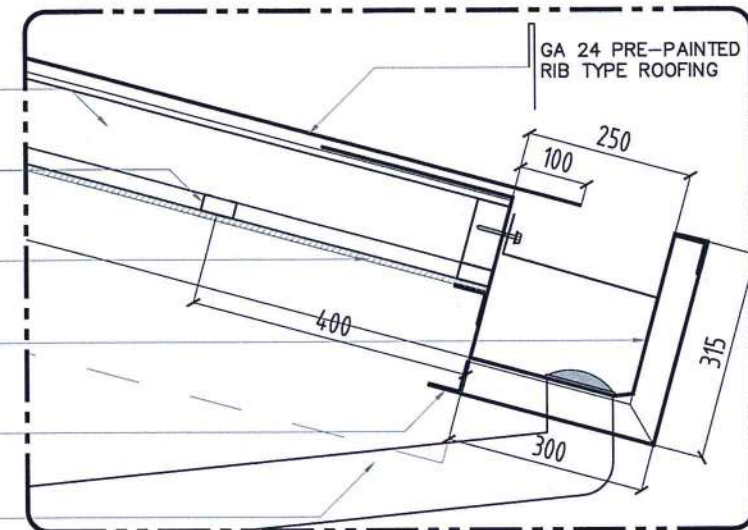


1  
07 07  
**FRONT ELEVATION  
DETAILED ELEVATION**  
SCALE: 1 : 50 M

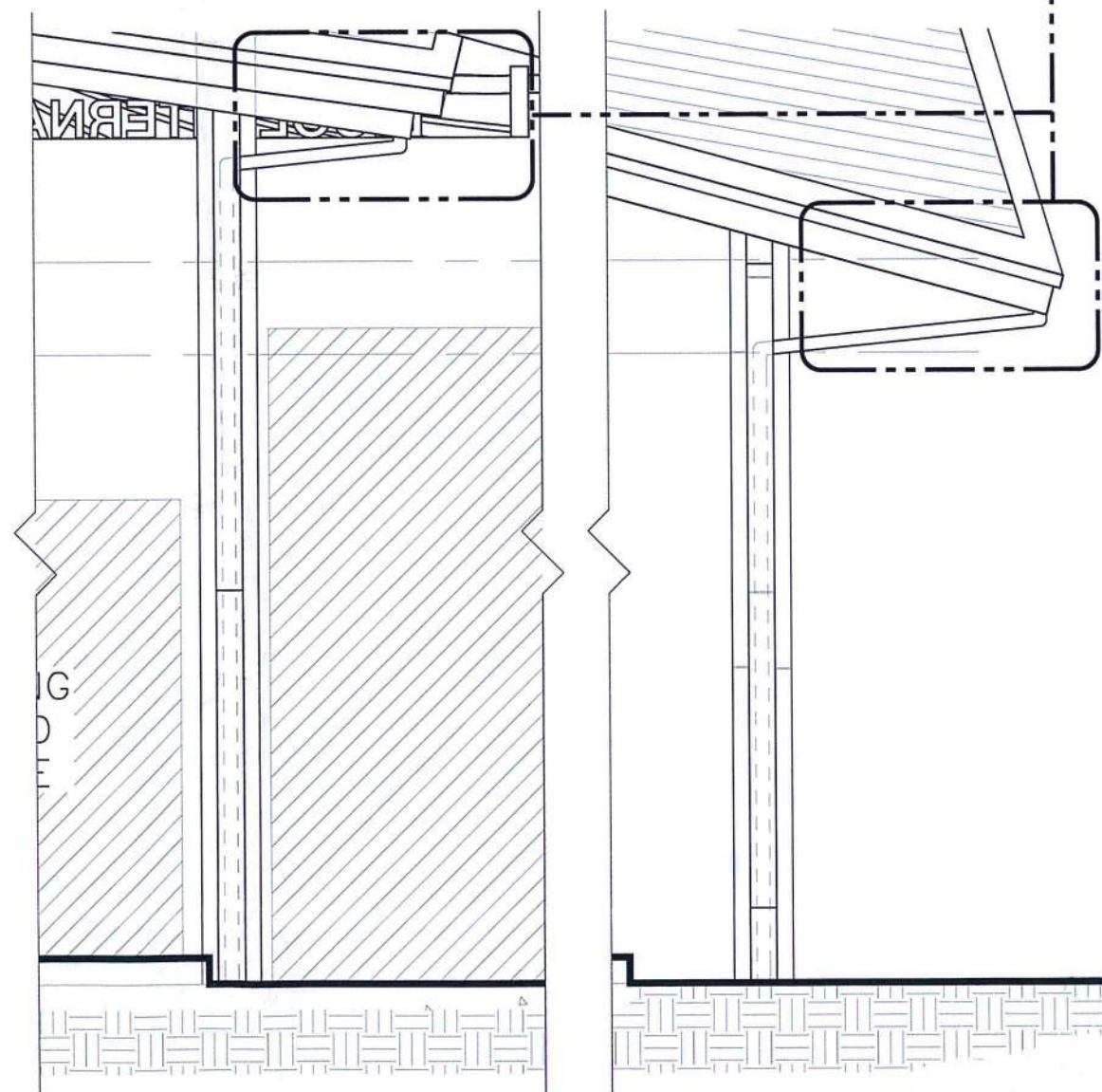


2  
08 08  
**DOWNSPOUT LAYOUT**  
SCALE: 1 : 100 M

50mm x 100mm x 6mm THK. C-PURLINS SPACED 600mm O.C.  
50mm x 25mm METAL FURRING CEILING SUPPORT SPACED @ 400mm O.C. BOTHWAYS  
9mm THK. FIBER CEMENT BOARD CEILING  
GA 24 PRE-PAINTED GUTTER W/ 4" Ø STRAINER  
50mm x 50mm x 3mm THK. ANGLE BAR SUPPORT (SEE STRUCTURAL DETAILS)  
DOWNSPOUT: 4" Ø PVC PIPE



**SPOT DETAIL**  
SCALE 1:10M



3  
08 08  
**DOWNSPOUT DETAIL**  
SCALE: 1 : 30 M



CIVIL AVIATION AUTHORITY OF THE PHILIPPINES  
MANILA, TEL. 891-9000

THIS DRAWING IS AN EXCLUSIVE PROPERTY OF CIVIL AVIATION AUTHORITY OF THE PHILIPPINES AND MUST NOT BE REPRODUCED, EXHIBITED, LOANED NOR COPIED IN PART OR IN WHOLE WITHOUT PROPER PERMISSION AND/OR WRITTEN CONSENT FROM THE CAAP DIRECTOR GENERAL.

AERODROME DEVELOPMENT  
AND MANAGEMENT SERVICE

INFRASTRUCTURE DEVELOPMENT  
AND DESIGN DIVISION

DESIGN STAFF:	INITIAL / DATE
DESIGNED BY: IDDD	
DRAWN BY: JCCS	
CHECKED BY: FMN	
EPS	

REVIEWED BY:  
  
EMERSON P. SALAS  
Supervising Aerodrome Engineer, IDDD-ADMS

SUBMITTED BY:  
  
ARNEL F. BORLASO  
Department Manager III, AED-ADMS

RECOMMENDED APPROVAL:  
  
LT COL. VALENTINO A. DIONELA PAF (RET)  
ADG II, ADMS

APPROVED:  
  
CAPTAIN MANUEL ANTONIO L. TAMAYO  
Director General

NOTES / REVISIONS:

PROJECT TITLE:  
PROVISION OF COVERED  
SHED AT MAIN GATE

LOCATION:  
BICOL INTERNATIONAL  
AIRPORT  
DARAGA, ALBAY

SHEET CONTENTS:  
- DETAILS

DRAWING SCALE:	SHEET NO:
AS SHOWN	08









CIVIL AVIATION AUTHORITY OF THE PHILIPPINES  
BANGKOK, 100-0001

THIS DRAWING IS AN EXCLUSIVE PROPERTY  
OF CIVIL AVIATION AUTHORITY OF THE  
PHILIPPINES AND MUST NOT BE REPRODUCED,  
EXHIBITED, LOANED NOR COPIED IN PART OR  
IN WHOLE WITHOUT PROPER PERMISSION  
AND/OR WRITTEN CONSENT FROM THE CAA  
DIRECTOR GENERAL.

AERODROME DEVELOPMENT  
AND MANAGEMENT SERVICE

INFRASTRUCTURE DEVELOPMENT  
AND DESIGN DIVISION

DESIGN STAFF:	INITIAL / DATE
DESIGNED BY:	IDDD
DRAWN BY:	JPDR
CHECKED BY:	

REVIEWED BY:  
  
EMERSON P. SALAS  
Acting Division Chief III, IDDD-ADMS

SUBMITTED BY:  
  
ARNEL F. BORLADO  
Department Manager III, AED-ADMS

RECOMMENDED APPROVAL:  
  
LT COL VALENTINO A. DIONELA PAF (RET)  
ADJUTANT GENERAL

APPROVED:  
  
CAPTAIN MANUEL ANTONIO TAMAYO  
Colonel General

NOTES / REVISIONS:

PROJECT TITLE:

PROVISION OF COVERED  
SHED AT MAIN GATE

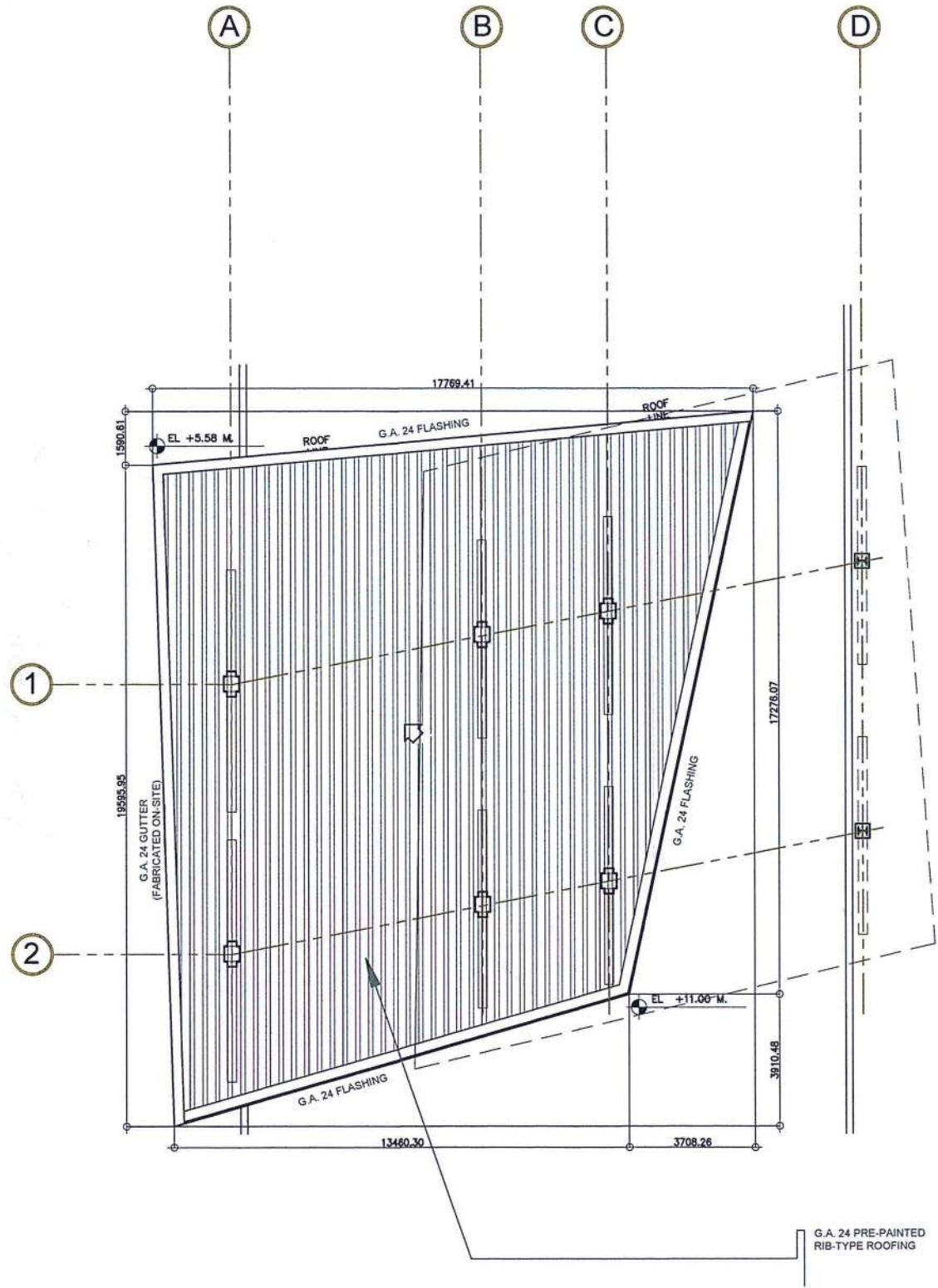
LOCATION:

BICOL INTERNATIONAL AIRPORT  
DARAGA, ALBAY

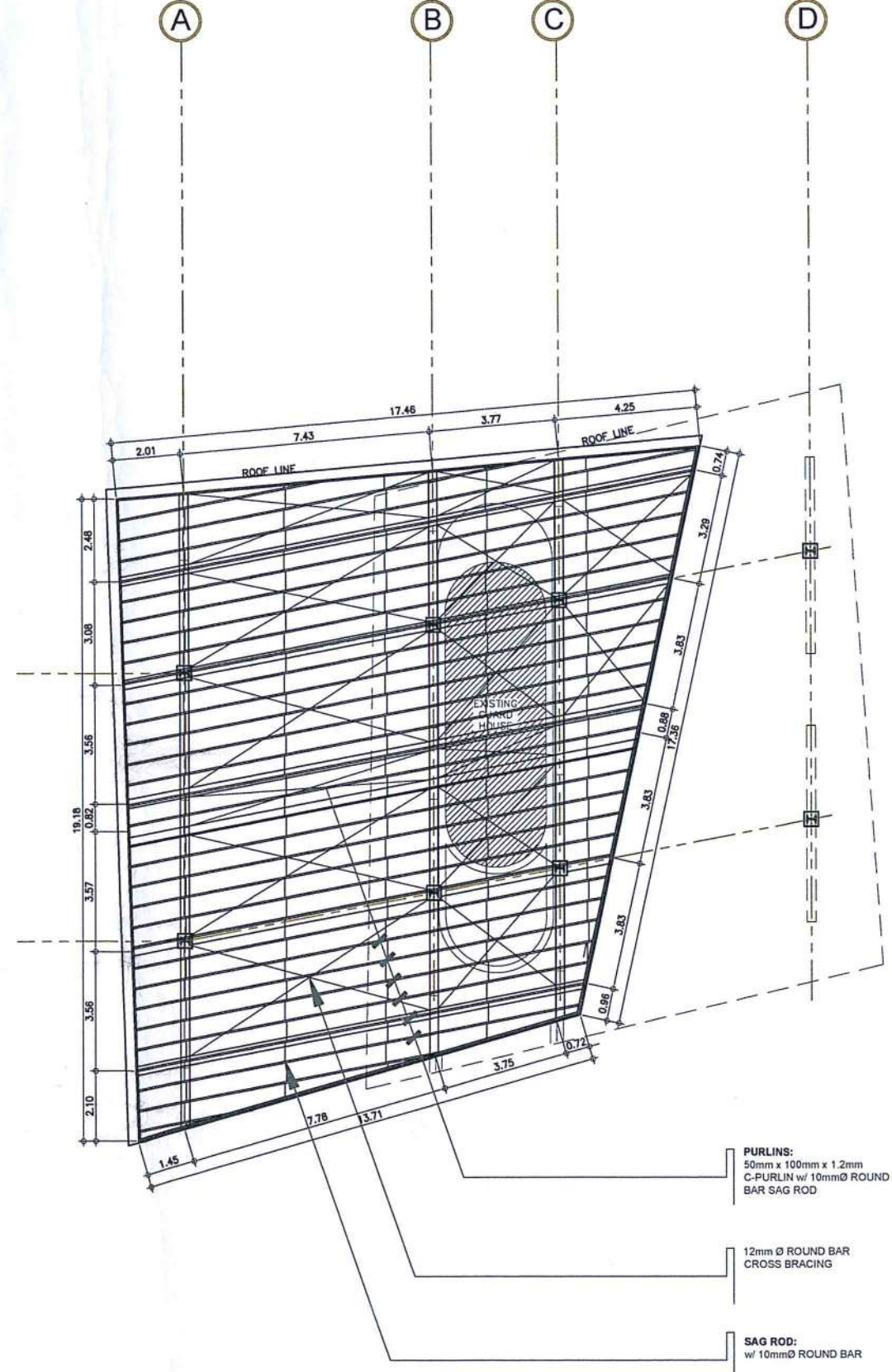
SHEET CONTENTS:

- ROOF PLAN (ROOF A)  
- ROOF FRAMING PLAN (ROOF A)

DRAWING SCALE:	SHEET NO:
AS SHOWN	S
	S - 02



PROVISION OF COVERED SHED AT MAIN GATE  
**ROOF PLAN (ROOF A)**  
SCALE: 1:100 MTS.



PROVISION OF COVERED SHED AT MAIN GATE  
**ROOF FRAMING PLAN (ROOF A)**  
SCALE: 1:100 MTS.





CIVIL AVIATION AUTHORITY OF THE PHILIPPINES

THIS DRAWING IS AN EXCLUSIVE PROPERTY OF CIVIL AVIATION AUTHORITY OF THE PHILIPPINES AND MUST NOT BE REPRODUCED, EXHIBITED, LOANED NOR COPIED IN PART OR IN WHOLE WITHOUT PROPER PERMISSION AND/OR WRITTEN CONSENT FROM THE CAAP DIRECTOR GENERAL.

AERODROME DEVELOPMENT AND MANAGEMENT SERVICE

INFRASTRUCTURE DEVELOPMENT AND DESIGN DIVISION

DESIGN STAFF: INITIAL / DATE

DESIGNED BY: IDDD  
DRAWN BY: JPDR  
CHECKED BY:

REVIEWED BY:

EMERSON P. SALAS  
Acting Division Chief III, IDDD-ADMS

SUBMITTED BY:  
ARNE F. BORLADO  
Department Manager III, AED-ADMS

RECOMMENDED APPROVAL:  
LT COL VALENTINO A DIONELA PAF (RET)  
ADG II ADMS

APPROVED:  
CAPTAIN MANUEL ANTONIO TAMAYO  
Director General

NOTES / REVISIONS:

PROJECT TITLE:

PROVISION OF COVERED SHED AT MAIN GATE

LOCATION:

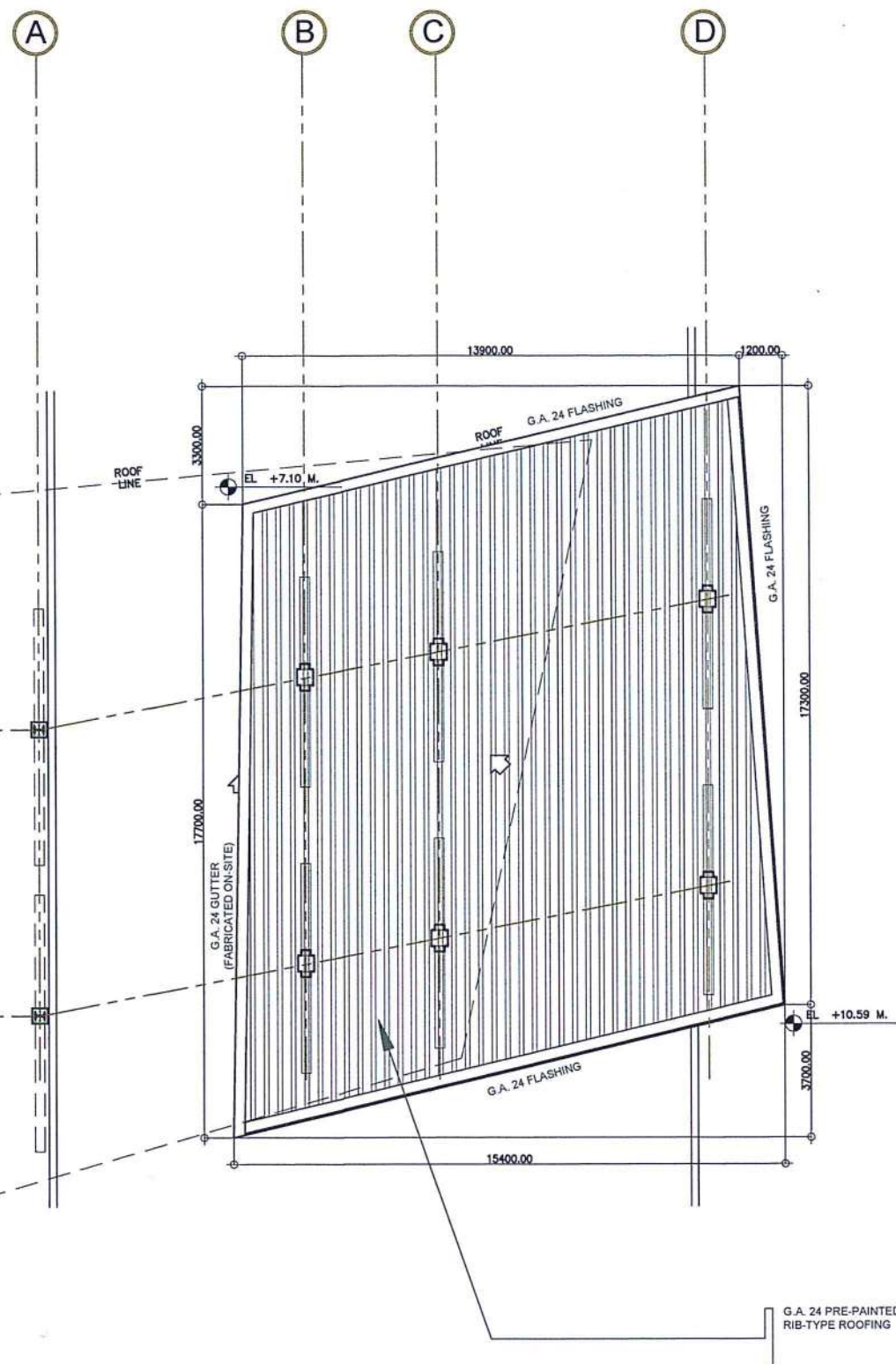
BICOL INTERNATIONAL AIRPORT  
DARAGA, ALBAY

SHEET CONTENTS:

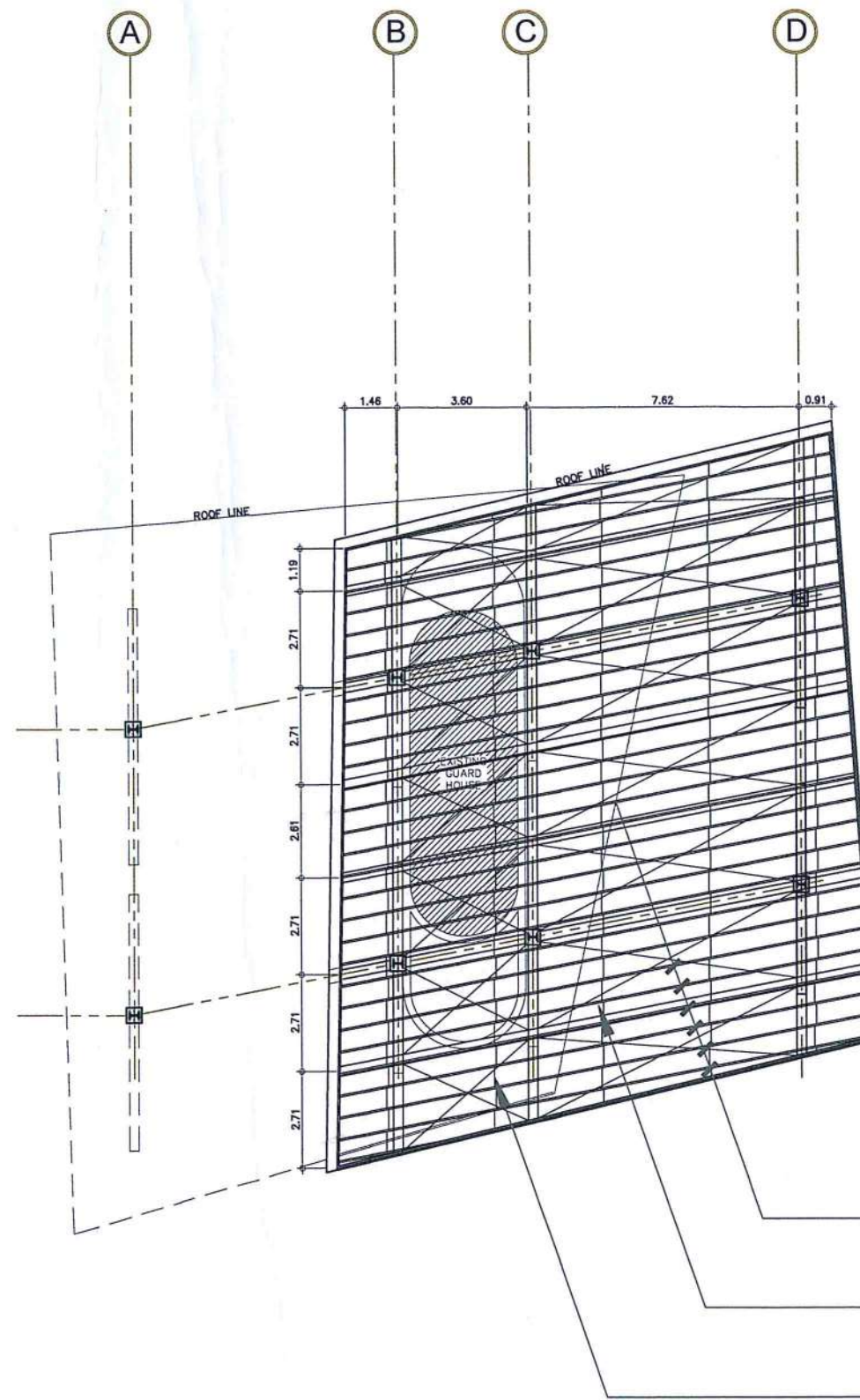
- ROOF PLAN (ROOF B)  
- ROOF FRAMING PLAN (ROOF B)

DRAWING SCALE: SHEET NO.

AS SHOWN S  
S - 03



PROVISION OF COVERED SHED AT MAIN GATE  
**ROOF PLAN (ROOF B)**  
SCALE: 1:100 MTS.



PROVISION OF COVERED SHED AT MAIN GATE  
**ROOF FRAMING PLAN (ROOF B)**  
SCALE: 1:100 MTS.



# LEGEND:

- (A) - STEEL COLUMN - W10x22
- (B) - STEEL BEAM - W8x15
- (C) - STEEL SUPPORT @ COLUMN - W8x15

# NOTE:

ALL GRIDS (1) & (2) ON EACH ELEVATION DRAWING REPRESENTED IN THIS SHEET ARE ALIGNED IN A DIAGONAL ORIENTATION. REFER TO PLANS FOR PROPER IDENTIFICATION/VERIFICATION OF SUCH GRID LINES.



CIVIL AVIATION AUTHORITY OF THE PHILIPPINES

THIS DRAWING IS AN EXCLUSIVE PROPERTY OF CIVIL AVIATION AUTHORITY OF THE PHILIPPINES AND MUST NOT BE REPRODUCED, EXHIBITED, LOANED NOR COPIED IN PART OR IN WHOLE WITHOUT PROPER PERMISSION AND/OR WRITTEN CONSENT FROM THE CAAP DIRECTOR GENERAL.

AERODROME DEVELOPMENT AND MANAGEMENT SERVICE

INFRASTRUCTURE DEVELOPMENT AND DESIGN DIVISION

DESIGN STAFF:	INITIAL / DATE
DESIGNED BY: IDDD	
DRAWN BY: JPDR	
CHECKED BY:	

REVIEWED BY:

EMERSON P. SALAS  
Acting Division Chief III, IDDD-ADMS

SUBMITTED BY:

ARNEL F. BORLADO  
Department Manager III, AED-ADMS

RECOMMENDED APPROVAL:

LT COL VALENTINO A. DIONELA PAF (RET)  
ADG II, ADMS

APPROVED:

CAPTAIN MAURICIO L. TAMAYO  
General

NOTES / REVISIONS:

PROJECT TITLE:

PROVISION OF COVERED SHED AT MAIN GATE

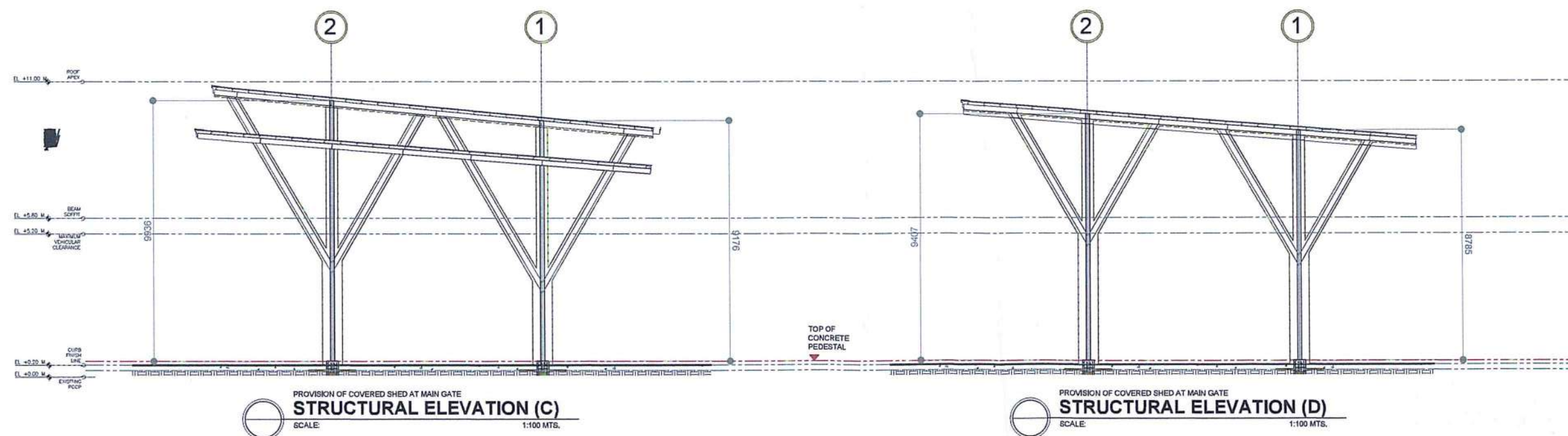
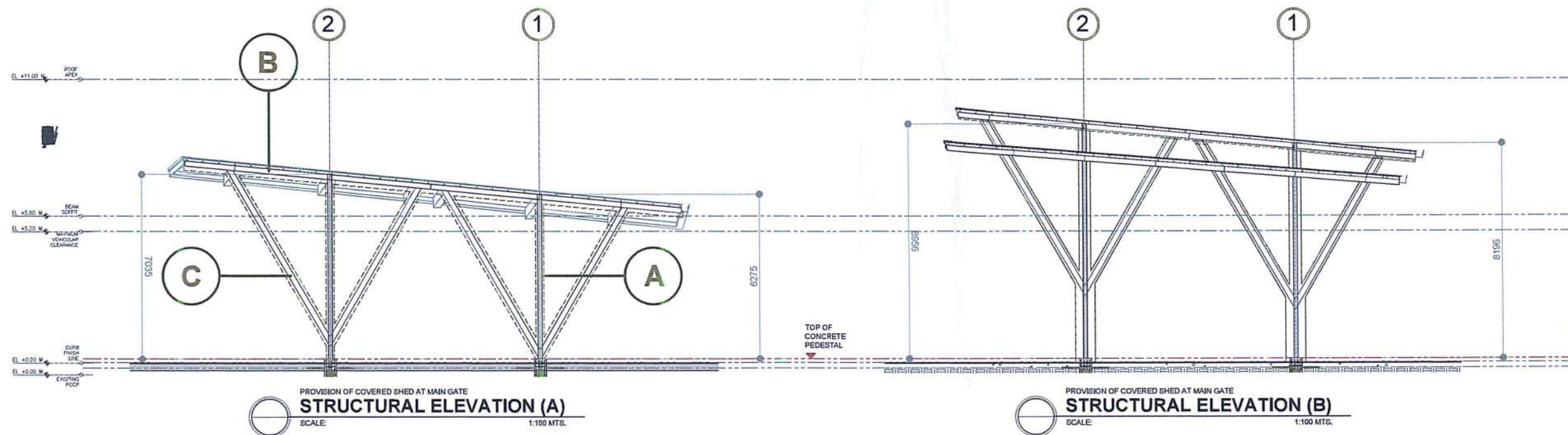
LOCATION:

BICOL INTERNATIONAL AIRPORT  
DARAGA, ALBAY

SHEET CONTENTS:

- ELEVATIONS (STRUCTURAL)

DRAWING SCALE:	SHEET NO:
AS SHOWN	S
	S - 04







CIVIL AVIATION AUTHORITY OF THE PHILIPPINES

THIS DRAWING IS AN EXCLUSIVE PROPERTY OF CIVIL AVIATION AUTHORITY OF THE PHILIPPINES AND MUST NOT BE REPRODUCED, EXHIBITED, LOANED NOR COPIED IN PART OR IN WHOLE WITHOUT PROPER PERMISSION AND/OR WRITTEN CONSENT FROM THE CAAP DIRECTOR GENERAL.

AERODROME DEVELOPMENT AND MANAGEMENT SERVICE

INFRASTRUCTURE DEVELOPMENT AND DESIGN DIVISION

DESIGN STAFF: INITIAL / DATE

DESIGNED BY: IDDD

DRAWN BY: JPDR

CHECKED BY:

REVIEWED BY:

EMERSON P. SALAS  
Acting Division Chief III, IDDD-ADMS

SUBMITTED BY:

ARNEL F. BORLADO  
Department Manager III, AED-ADMS

RECOMMENDED APPROVAL:

LT COL VALENTINO A. DIONELA PAF (RET)  
AED-ADMS

APPROVED:

CAPTAIN MANUEL ANTONIO L. TAMAYO  
Director General

NOTES / REVISIONS:

PROJECT TITLE:

PROVISION OF COVERED SHED AT MAIN GATE

LOCATION:

BICOL INTERNATIONAL AIRPORT  
DARAGA, ALBAY

SHEET CONTENTS:

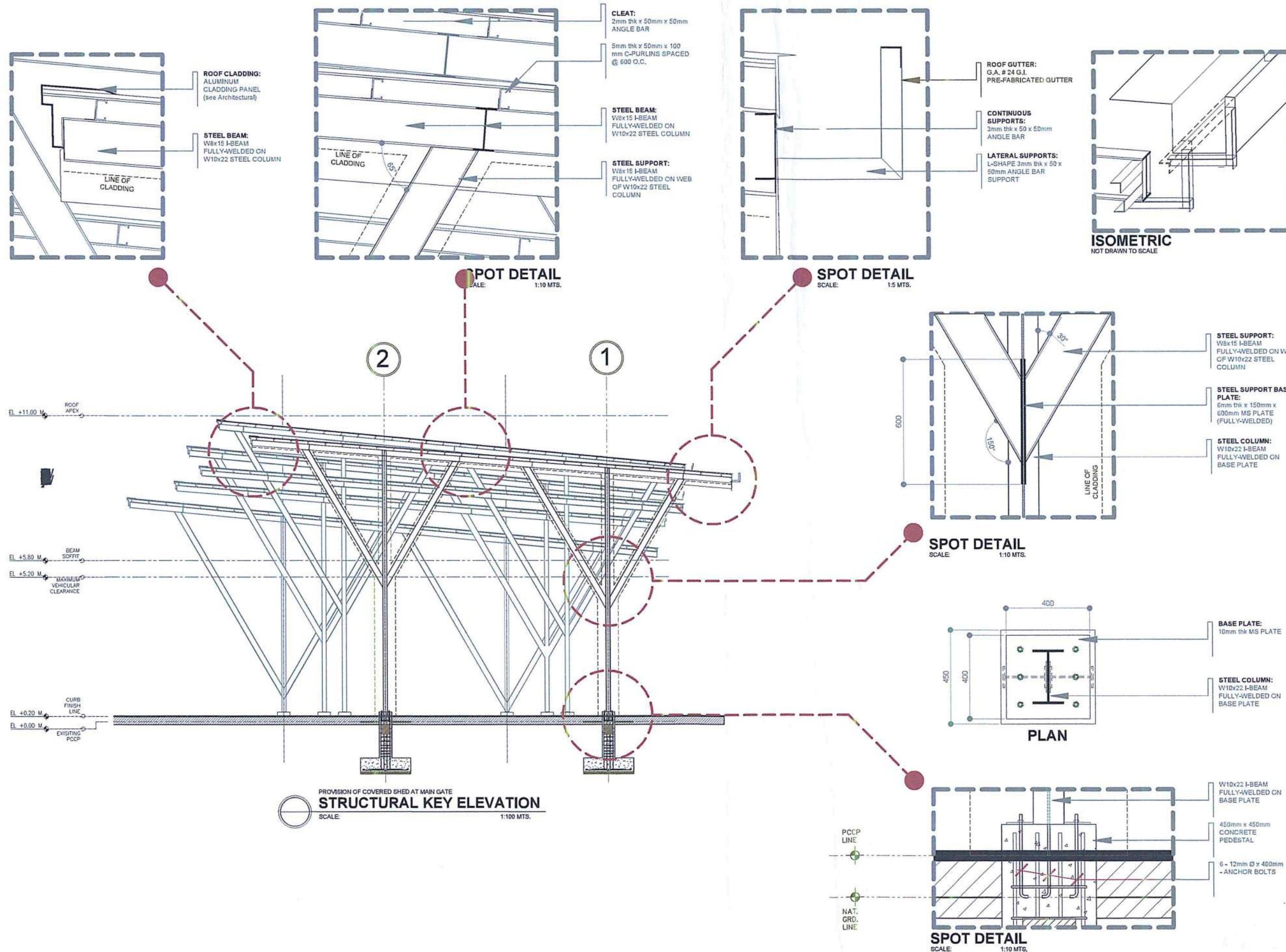
- MISCELLANEOUS DETAILS (STRUCTURAL)

DRAWING SCALE:

SHEET NO:

AS SHOWN

S - 04







CIVIL AVIATION AUTHORITY OF THE PHILIPPINES

THIS DRAWING IS AN EXCLUSIVE PROPERTY OF CIVIL AVIATION AUTHORITY OF THE PHILIPPINES AND MUST NOT BE REPRODUCED, EXHIBITED, LOANED NOR COPIED IN PART OR IN WHOLE WITHOUT PROPER PERMISSION AND/OR WRITTEN CONSENT FROM THE CAAP DIRECTOR GENERAL.

AERODROME DEVELOPMENT AND MANAGEMENT SERVICE

INFRASTRUCTURE DEVELOPMENT AND DESIGN DIVISION

DESIGN STAFF:	INITIAL / DATE
DESIGNED BY: IDDD	
DRAWN BY: JPCR	
CHECKED BY: RUAJR	
EPS	

REVIEWED BY:

EMERSON P. SALAS  
Senior Engineering Aerodrome Engineer, IDDD-ADMS

SUBMITTED BY:

ARNEL F. BORLADO  
Department Manager III, AED-ADMS

RECOMMENDED APPROVAL:

LT COL VALENTINO A. DIGNELA PAF (RET)  
ADG-B, ADMS

APPROVED:

CAPTAIN MANUEL ANTONIO L. TAMAYO  
Director General

NOTES / REVISIONS:

PROJECT TITLE:

PROVISION OF COVERED  
SHED AT MAIN GATE

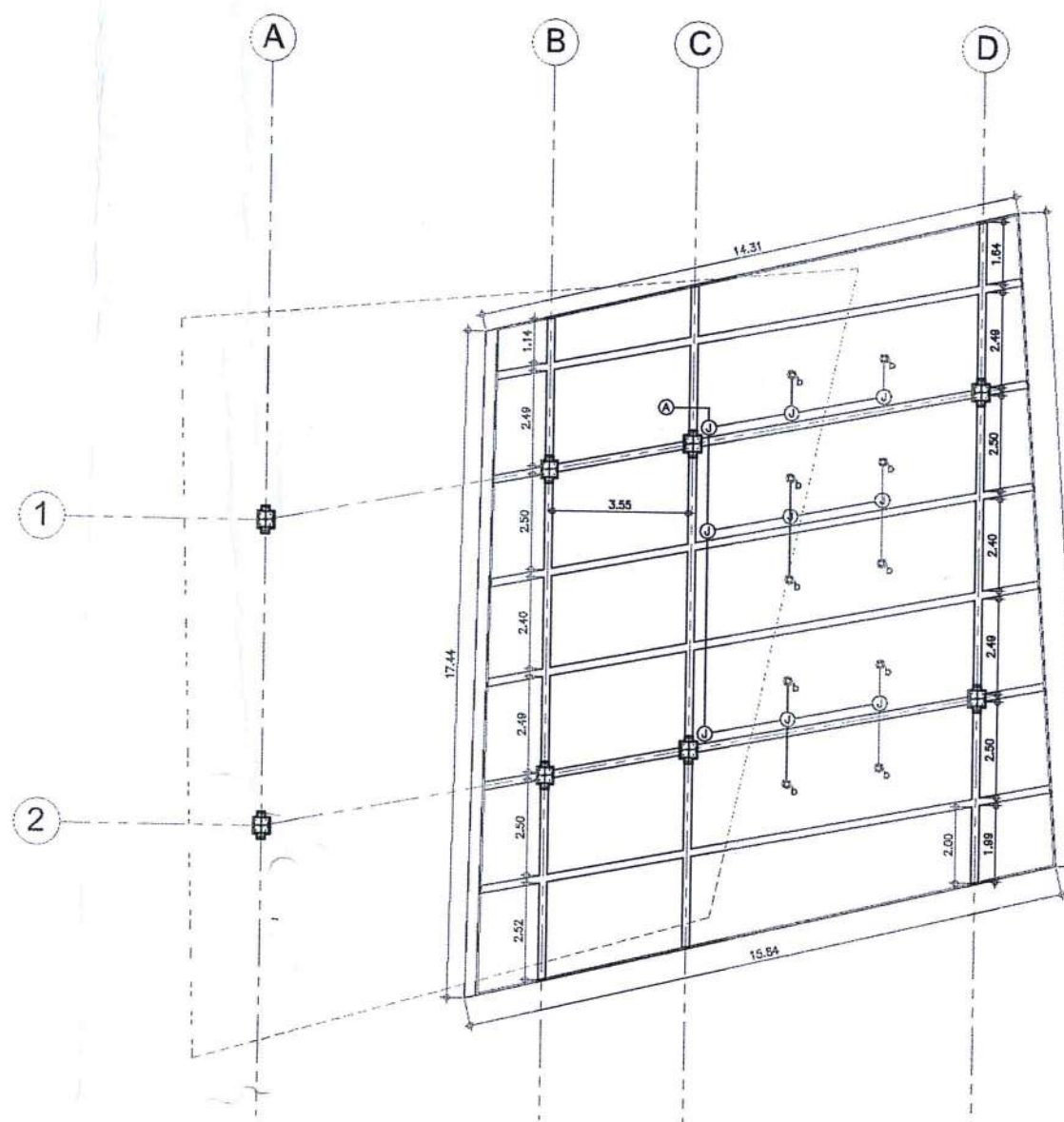
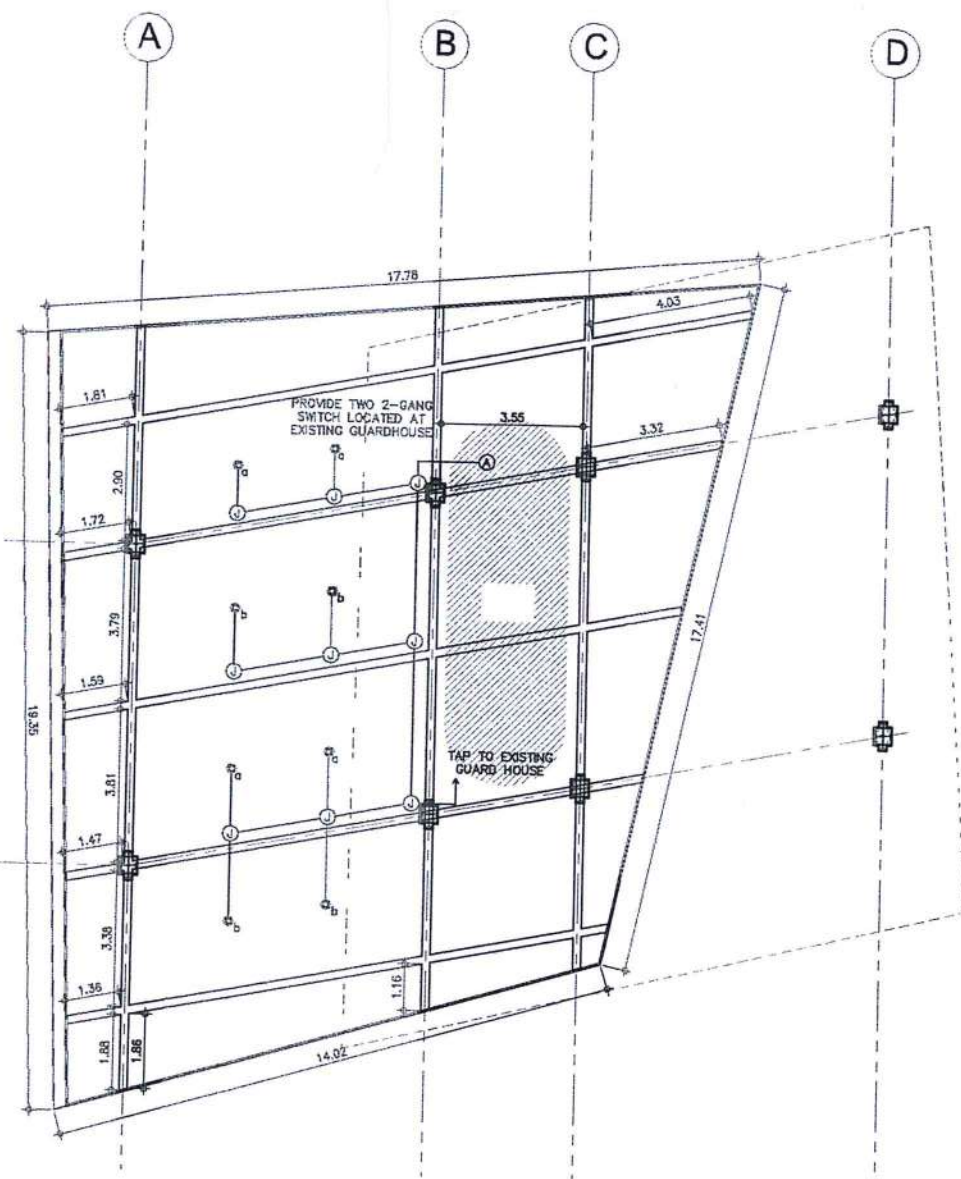
LOCATION:

BICOL INTERNATIONAL  
AIRPORT  
DARAGA, ALBAY

SHEET CONTENTS:

— LIGHTING LAYOUT PLAN

DRAWING SCALE:	SHEET NO:
AS SHOWN	08



## GENERAL NOTES &amp; SPECIFICATIONS:

1. ALL ELECTRICAL EQUIPMENT SHALL BE PROPERLY GROUNDED IN ACCORDANCE WITH THE REQUIREMENT OF THE PHILIPPINE ELECTRICAL CODE.
2. ALL MATERIALS TO BE USED SHALL BE NEW AND OF THE APPROVED TYPE FOR BOTH LOCATION AND PURPOSE INTENDED.
3. WIRES AND CABLES TO BE USED SHALL BE UNDERWRITERS LABORATORY (UL) LISTED.
4. MATERIALS AND EQUIPMENT TO BE USED ( LIGHTING FIXTURES, BALLAST, FLUORESCENT TUBE, WIRING DEVICES, CIRCUIT BREAKERS, CONDUIT AND PIPES, ENCLOSURES, WIRES AND CABLES, ETC) SHALL HAVE IMPORTED COMMODITY CLEARANCE (ICC) LABEL FOR FOREIGN MADE PRODUCTS AND P.S. MARK FOR LOCAL IN NATURE OF THE BUREAU OF PRODUCT STANDARD (BPS).
5. JUNCTION BOXES AND PULL BOXES GAUGE NO. 16 (MINIMUM) SHALL BE PROVIDED BY THE CONTRACTOR WHENEVER REQUIRED AND NECESSARY AND SHALL BE INSTALLED AT CONVENIENT SPACE AND LOCATION TO FACILITATE WIRE PULLING EVEN IF THESE ITEMS ARE NOT SHOWN IN THE PLAN.
6. ALL WORKS SHALL BE EXECUTED IN A WORKMANSHIP MANNER AND SHALL PRESENT A NEAT AND ORDERLY ACCEPTANCE. ALL WIRING SHALL BE CONCEALED AS MUCH AS POSSIBLE.

## LEGEND:



CIRCUIT HOMERUN



CONDUIT RUN



180MM DIA X 185MM SURFACE MOUNTED DOWN LIGHT FIXTURE  
WITH 40 WATTS LED COB, ALUMINUM HOUSING AND CLEAR  
GLASS COVER



JUNCTION BOX