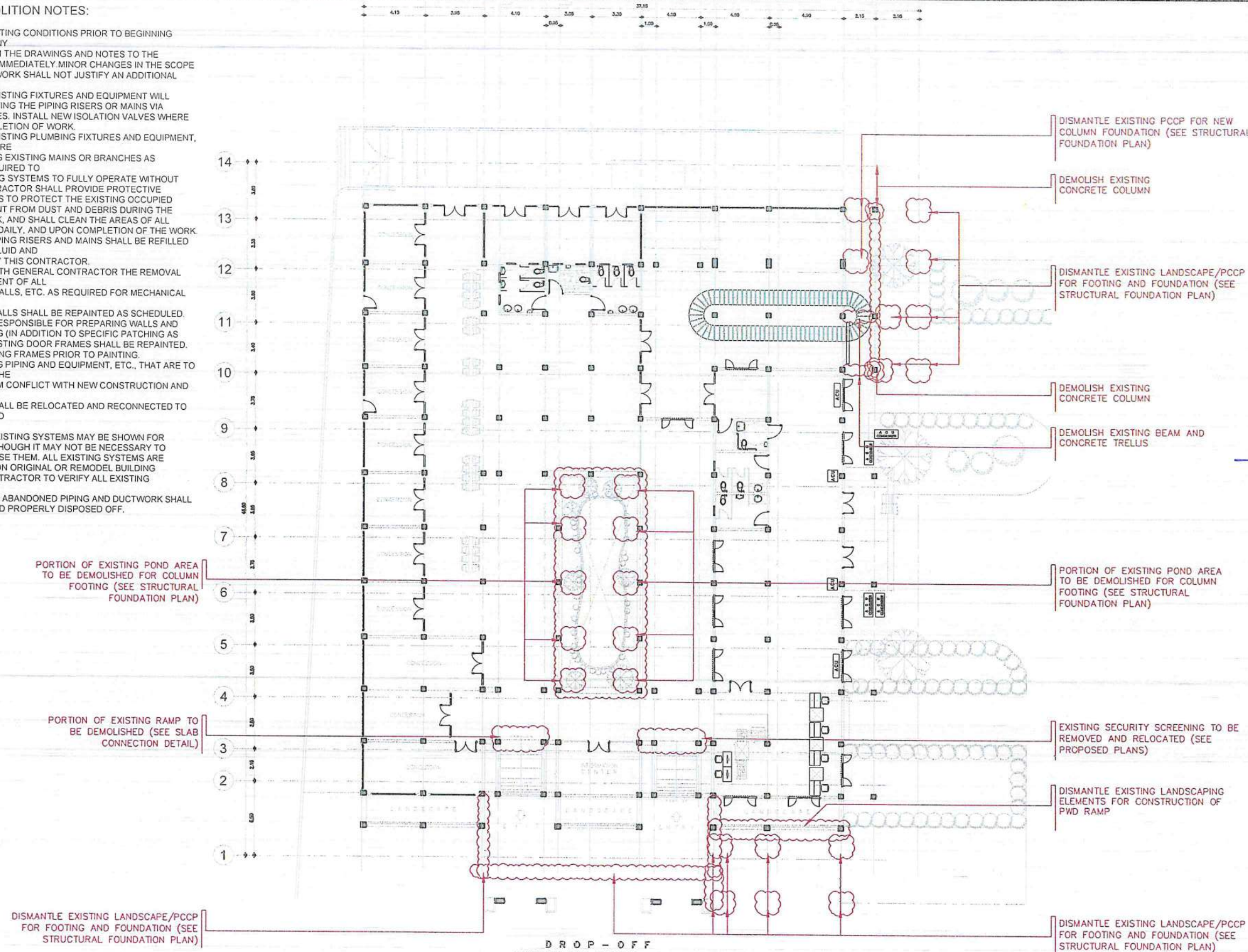


GENERAL DEMOLITION NOTES:

1. VERIFY ALL EXISTING CONDITIONS PRIOR TO BEGINNING WORK. BRING ANY DISCREPANCIES FROM THE DRAWINGS AND NOTES TO THE PROJECT IN CHARGE IMMEDIATELY. MINOR CHANGES IN THE SCOPE OF THE DEMOLITION WORK SHALL NOT JUSTIFY AN ADDITIONAL COST.
2. REMOVAL OF EXISTING FIXTURES AND EQUIPMENT WILL REQUIRE ISOLATING THE PIPING RISERS OR MAINS VIA SHUT-OFF VALVES. INSTALL NEW ISOLATION VALVES WHERE REQUIRED FOR COMPLETION OF WORK.
3. REMOVAL OF EXISTING PLUMBING FIXTURES AND EQUIPMENT, ETC. WILL REQUIRE CAPPING AND SEALING EXISTING MAINS OR BRANCHES AS NECESSARY AND REQUIRED TO ALLOW THE REMAINING SYSTEMS TO FULLY OPERATE WITHOUT DEGRADATION. CONTRACTOR SHALL PROVIDE PROTECTIVE PLASTIC DROP CLOTHS TO PROTECT THE EXISTING OCCUPIED AREAS AND EQUIPMENT FROM DUST AND DEBRIS DURING THE CONSTRUCTION WORK, AND SHALL CLEAN THE AREAS OF ALL CONSTRUCTION DIRT DAILY, AND UPON COMPLETION OF THE WORK.
4. ALL DRAINED PIPING RISERS AND MAINS SHALL BE REFILLED WITH PROPER FLUID AND PROPERLY VENTED BY THIS CONTRACTOR.
5. COORDINATE WITH GENERAL CONTRACTOR THE REMOVAL AND REPLACEMENT OF ALL EXISTING CEILINGS, WALLS, ETC. AS REQUIRED FOR MECHANICAL DEMOLITION WORK.
6. ALL EXISTING WALLS SHALL BE REPAINTED AS SCHEDULED. CONTRACTOR RESPONSIBLE FOR PREPARING WALLS AND MINOR PATCHING (IN ADDITION TO SPECIFIC PATCHING AS NOTED). ALL EXISTING DOOR FRAMES SHALL BE REPAINTED. PREPARE EXISTING FRAMES PRIOR TO PAINTING.
7. WHERE EXISTING PIPING AND EQUIPMENT, ETC., THAT ARE TO BE UTILIZED IN THE COMPLETED PROGRAM CONFLICT WITH NEW CONSTRUCTION AND THE REQUIRED DEMOLITION, THEY SHALL BE RELOCATED AND RECONNECTED TO MAINTAIN THE DESIRED SERVICE.
8. PORTIONS OF EXISTING SYSTEMS MAY BE SHOWN FOR CLARITY EVEN THOUGH IT MAY NOT BE NECESSARY TO MODIFY OR REVISE THEM. ALL EXISTING SYSTEMS ARE SHOWN BASED ON ORIGINAL OR REMODEL BUILDING DRAWINGS. CONTRACTOR TO VERIFY ALL EXISTING CONDITIONS.
9. ALL ACCESSIBLE ABANDONED PIPING AND DUCTWORK SHALL BE REMOVED AND PROPERLY DISPOSED OFF.



1
S 02
DROP - OFF
STRUCTURAL WORKS
DEMOLITION PLAN
SCALE: 1:275M



THIS DRAWING IS AN EXCLUSIVE PROPERTY OF CIVIL AVIATION AUTHORITY OF THE PHILIPPINES AND MUST NOT BE REPRODUCED, EXHIBITED, LOANED NOR COPIED IN PART OR IN WHOLE WITHOUT PROPER PERMISSION AND/OR WRITTEN CONSENT FROM THE CAAP DIRECTOR GENERAL

AERODROME DEVELOPMENT AND MANAGEMENT SERVICE

INFRASTRUCTURE DEVELOPMENT AND DESIGN DIVISION

DESIGN STAFF:	INITIAL / DATE
DESIGNED BY: IDDO	
DRAWN BY: GOF	
CHECKED BY: JCCS	
EJDR	

REVIEWED BY:
RAUL P. CRUCENA
ACTING DIVISION CHIEF III, IDDO-ADMS

SUBMITTED BY:
ARNEL F. BORLADO
DEPARTMENT MANAGER III, AED-ADMS

RECOMMENDED APPROVAL:
LT COL VALERINO A. DIONELA PAF (RET)
ASSISTANT DIRECTOR GENERAL II, ADMS

APPROVED:
CAPTAIN MANUEL ANTONIO L. TAMAYO
DIRECTOR GENERAL

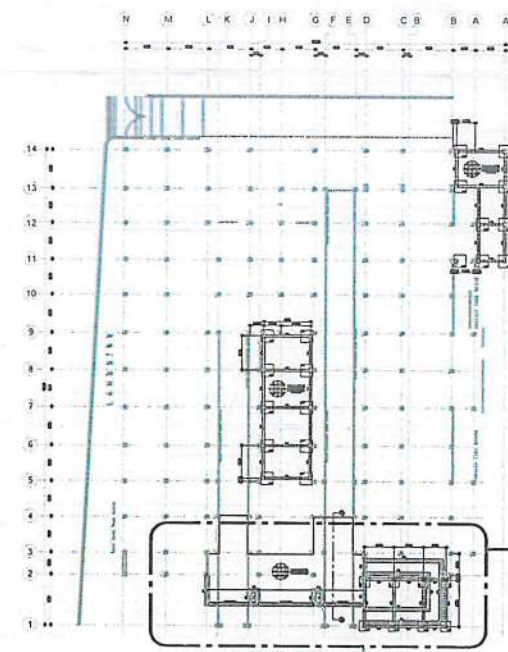
NOTES / REVISIONS:

PROJECT TITLE:
IMPROVEMENT/EXPANSION OF PASSENGER TERMINAL BUILDING

LOCATION:
BASCO AIRPORT
BASCO, BATANGAS

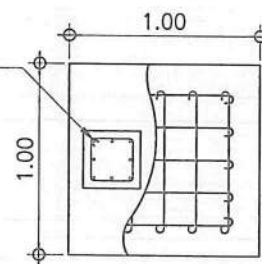
SHEET CONTENTS:

DRAWING SCALE:	SHEET NO:
AS SHOWN	S 002

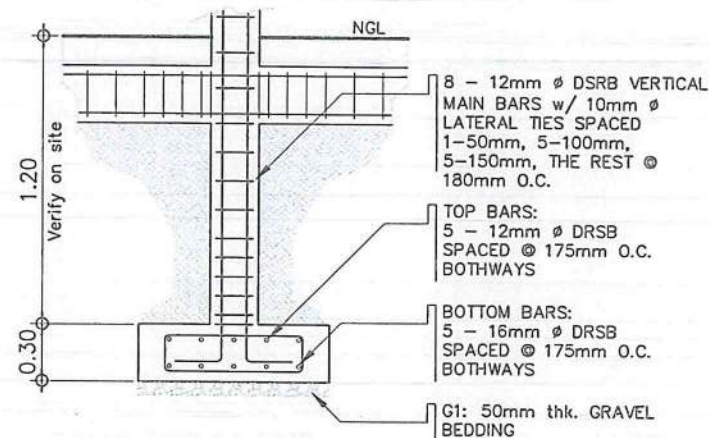


1
S 03
FOUNDATION PLAN
KEY PLAN
SCALE: 1:750M

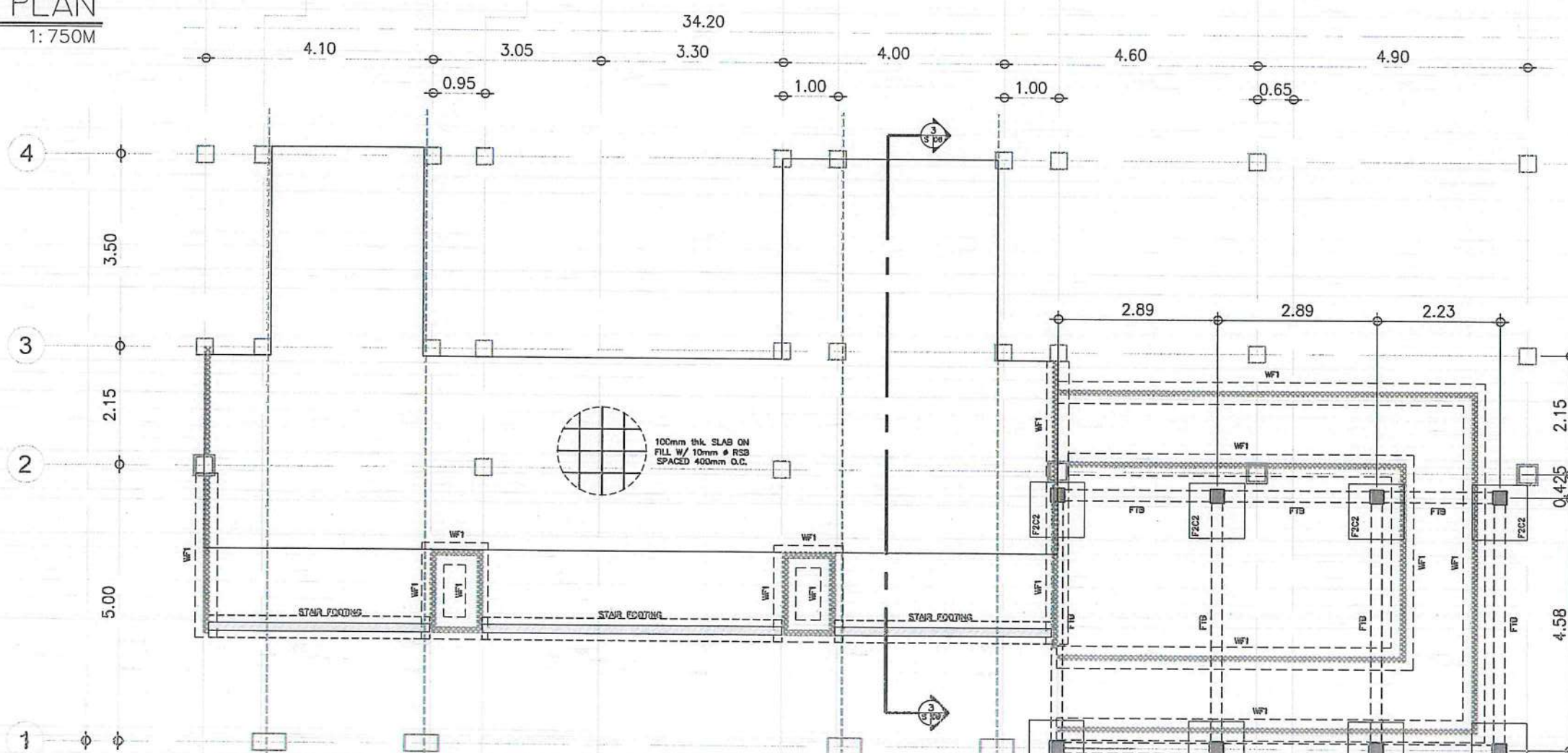
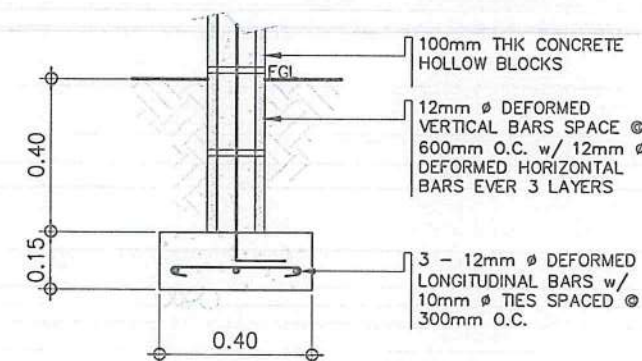
COLUMN: 250mm x 250mm
w/ 8 - 12mm ϕ DSRB
VERTICAL MAIN BARS AND
10mm ϕ TIES SPACED @
1-50mm, 3-100mm,
3-150mm, THE REST @
185mm O.C.



A
S 03
DETAIL OF 'F2/C2'
SCALE: 1:40M



B
S 03
DETAIL OF 'WF1'
SCALE: 1:20M



2
S 03
FOUNDATION PLAN 'A'
SCALE: 1:100M

.ICAAP 2.jpg



CIVIL AVIATION AUTHORITY OF THE PHILIPPINES

THIS DRAWING IS AN EXCLUSIVE PROPERTY
OF CIVIL AVIATION AUTHORITY OF THE
PHILIPPINES AND MUST NOT BE REPRODUCED,
EXHIBITED, LOANED NOR COPIED IN PART OR
IN WHOLE WITHOUT PROPER PERMISSION
AND/OR WRITTEN CONSENT FROM THE CAAP
DIRECTOR GENERAL

AERODROME DEVELOPMENT
AND MANAGEMENT SERVICE

INFRASTRUCTURE DEVELOPMENT
AND DESIGN DIVISION

DESIGN STAFF: INITIAL / DATE
DESIGNED BY: IDDO
DRAWN BY: GOF
CHECKED BY: JCCS
EJJC
EJJC

REVIEWED BY:

RAUL R. CRUCENA
DIVISION CHIEF III, IDDO-ADMS

SUBMITTED BY:

ARNEL P. BORLADO
DEPARTMENT MANAGER III, AED-ADMS

RECOMMENDED APPROVAL:

L.T. COL. VALENTINO A. DIONELA PAF (RET)
ASSISTANT DIRECTOR GENERAL II, ADMS

APPROVED:

CAPTAIN MANUEL ANTONIO L. TAMAYO
DIRECTOR GENERAL

NOTES / REVISIONS:

PROJECT TITLE:

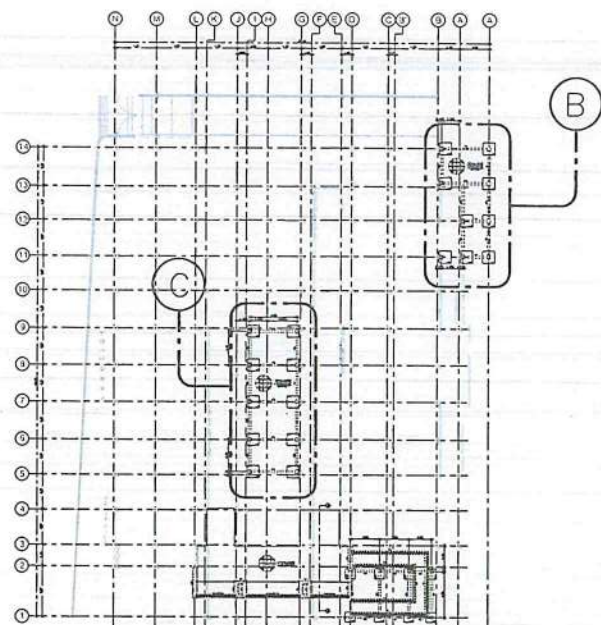
IMPROVEMENT/EXPANSION
OF PASSENGER TERMINAL
BUILDING

LOCATION:

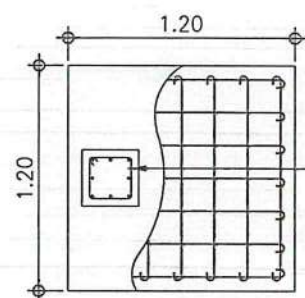
BASCO AIRPORT
BASCO, BATANES

SHEET CONTENTS:

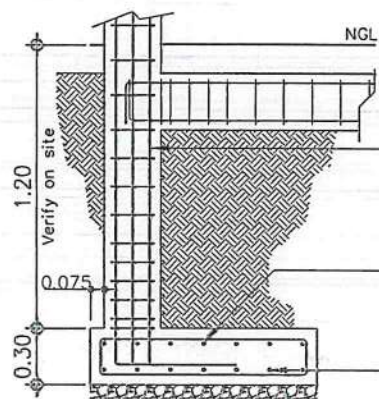
DRAWING SCALE: SHEET NO.
AS SHOWN S 003



1
S 04
FOUNDATION PLAN
KEY PLAN
SCALE: 1:750M



COLUMN: 300mm x 300mm
w/ 8 - 16mm ϕ DSRB
VERTICAL MAIN BARS AND
10mm ϕ LATERAL TIES
SPACED @ 1-50mm,
5-100mm, 5-150mm, THE
REST @ 180mm O.C.



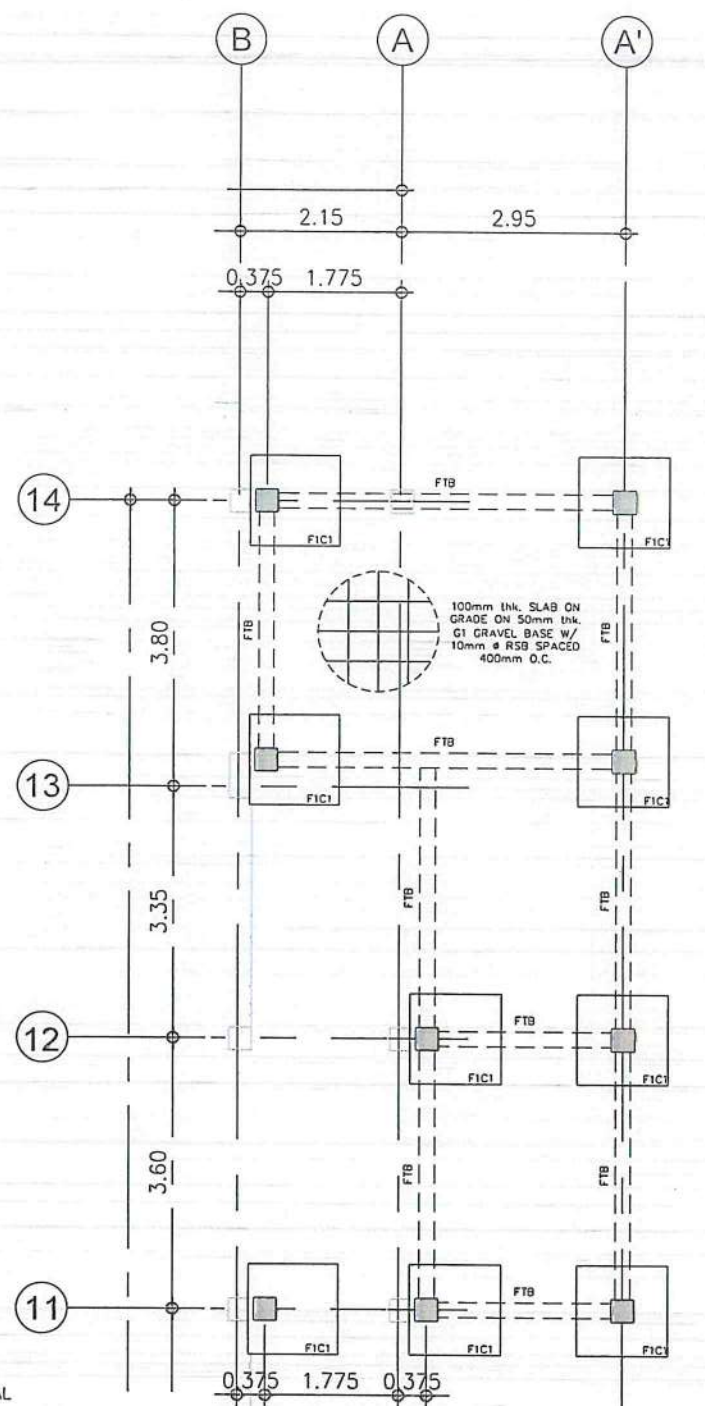
8 - 16mm ϕ DSRB VERTICAL
MAIN BARS w/ 10mm ϕ LATERAL
TIES SPACED 1 @ 50mm, 5 @
100mm, 5 @ 150mm, THE REST
@ 180mm O.C.

TOP BARS:
7 - 12mm ϕ DSRB
SPACED @ 175mm O.C.
BOTHWAYS

BOTTOM BARS:
7 - 16mm ϕ DSRB
SPACED @ 175mm O.C.
BOTHWAYS

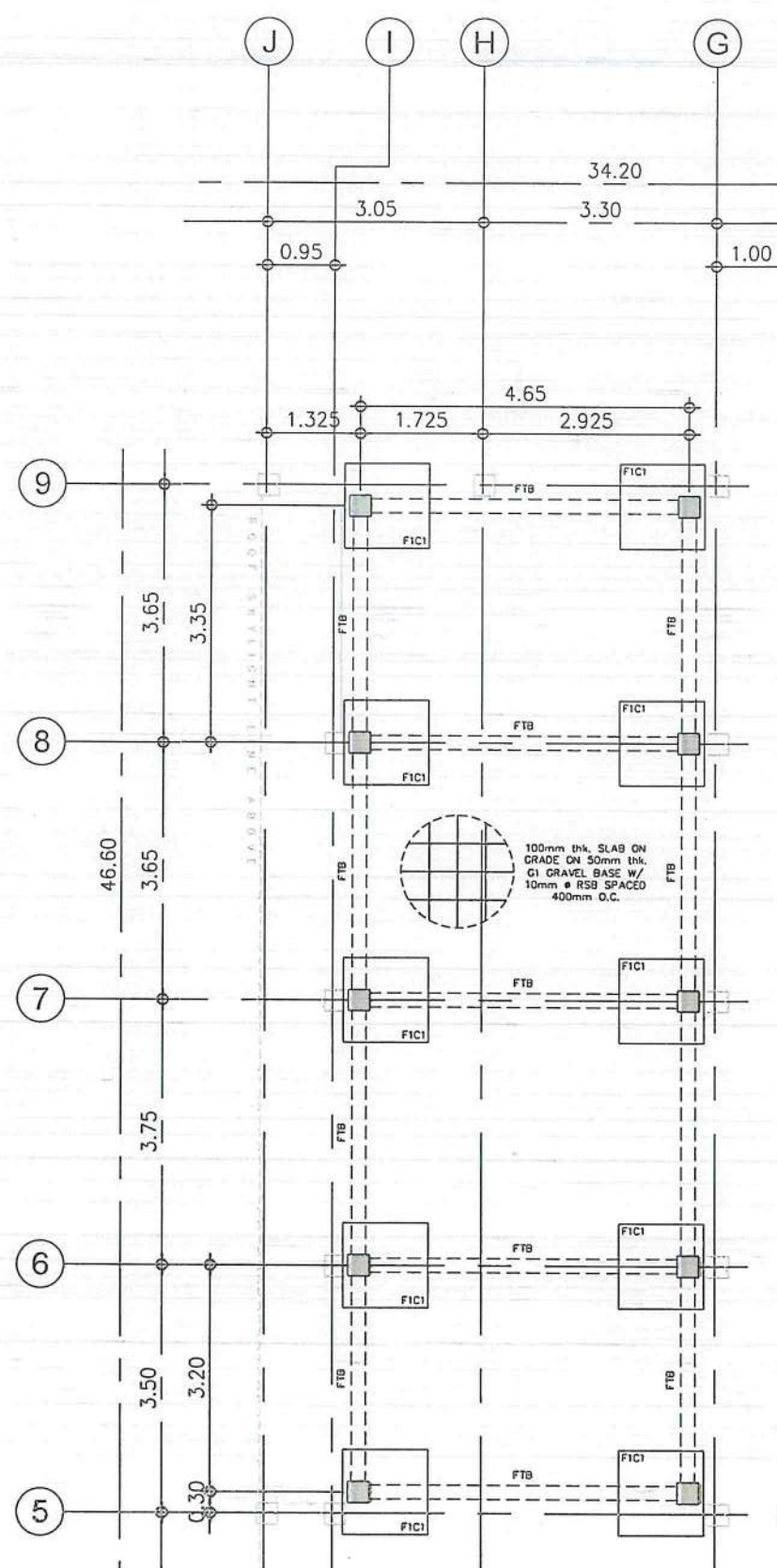
G1: 50mm thk. GRAVEL
BEDDING

A
S 04
DETAIL OF 'F1/C1'
SCALE: 1:40M



2
S 04
FOUNDATION PLAN 'B'
SCALE: 1:100M

NOTE: THE DEPTH OF THE EXISTING
FOUNDATION IS CURRENTLY
UNDETERMINED. THEREFORE, THE
DEPTH OF THE PROPOSED FOUNDATION
SHALL BE VERIFIED ON SITE



3
S 04
FOUNDATION PLAN 'C'
SCALE: 1:100M



THIS DRAWING IS AN EXCLUSIVE PROPERTY
OF CIVIL AVIATION AUTHORITY OF THE
PHILIPPINES AND MUST NOT BE REPRODUCED,
EXHIBITED, LOANED NOR COPIED IN PART OR
IN WHOLE WITHOUT PROPER PERMISSION
AND/OR WRITTEN CONSENT FROM THE CAAP
DIRECTOR GENERAL

AERODROME DEVELOPMENT
AND MANAGEMENT SERVICE

INFRASTRUCTURE DEVELOPMENT
AND DESIGN DIVISION

DESIGN STAFF:	INITIAL / DATE
DESIGNED BY:	1000
DRAWN BY:	GOF
CHECKED BY:	JCCS
APPROVED BY:	CJDC
	EJDR

REVIEWED BY:

RAUL R. CRUCENA
DIVISION CHIEF III, 1000-ADMS

SUBMITTED BY:

ARNEL F. BORLADO
DEPARTMENT MANAGER III, AED-ADMS

RECOMMENDED APPROVAL:

LT COL. VALFANTINO A. DIONELA PAF (RET)
ASSISTANT DIRECTOR GENERAL II, ADMS

APPROVED:

CAPTAIN MANUEL ANTONIO L. TAMAYO
DIRECTOR GENERAL

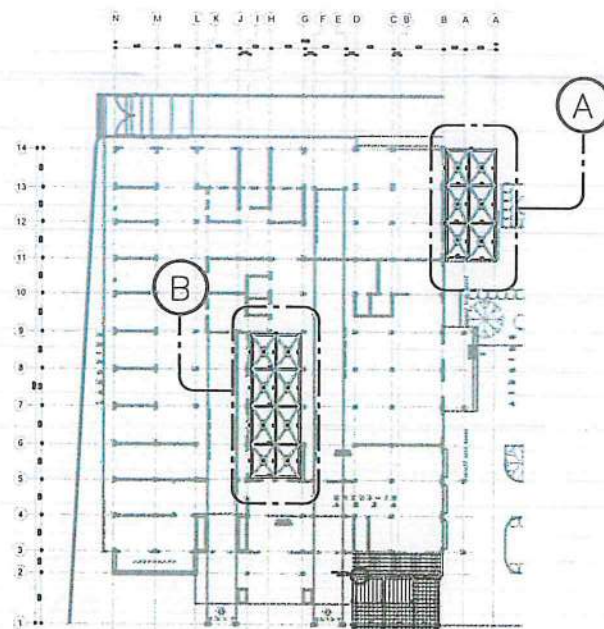
NOTES / REVISIONS:

PROJECT TITLE:
IMPROVEMENT/EXPANSION
OF PASSENGER TERMINAL
BUILDING

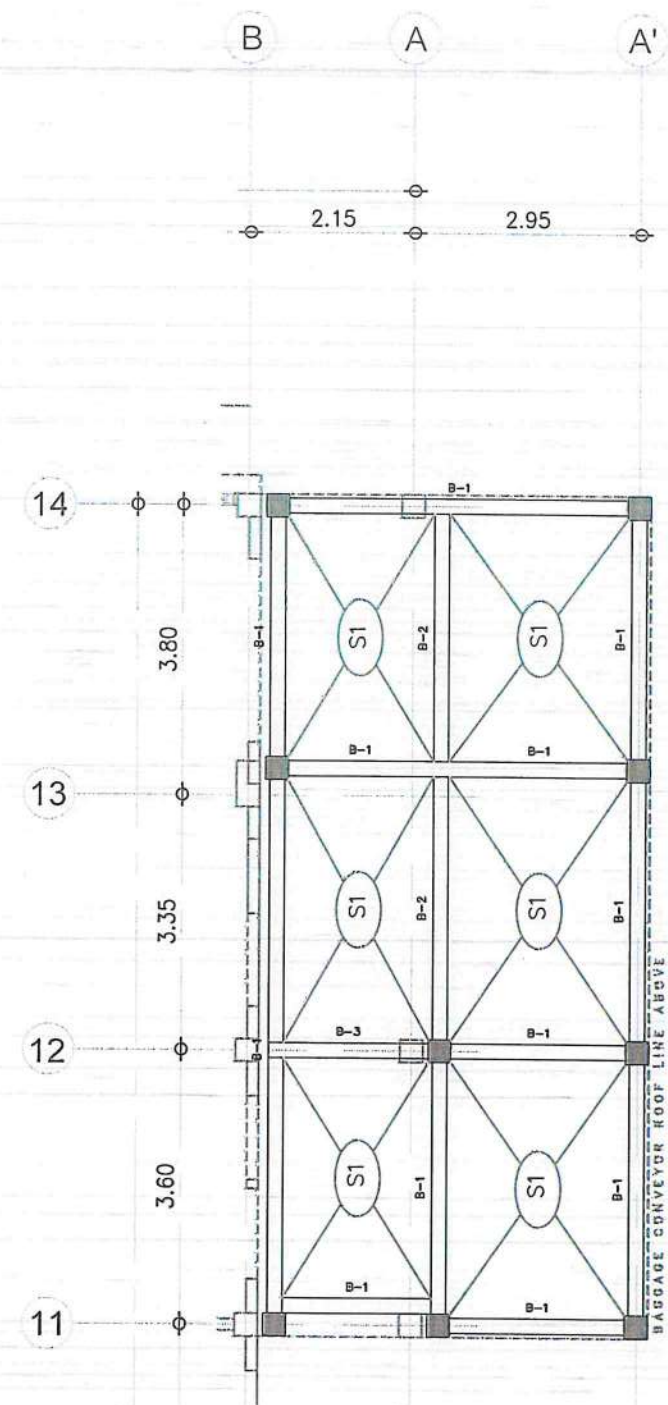
LOCATION:
BASCO AIRPORT
BASCO, BATANES

SHEET CONTENTS:

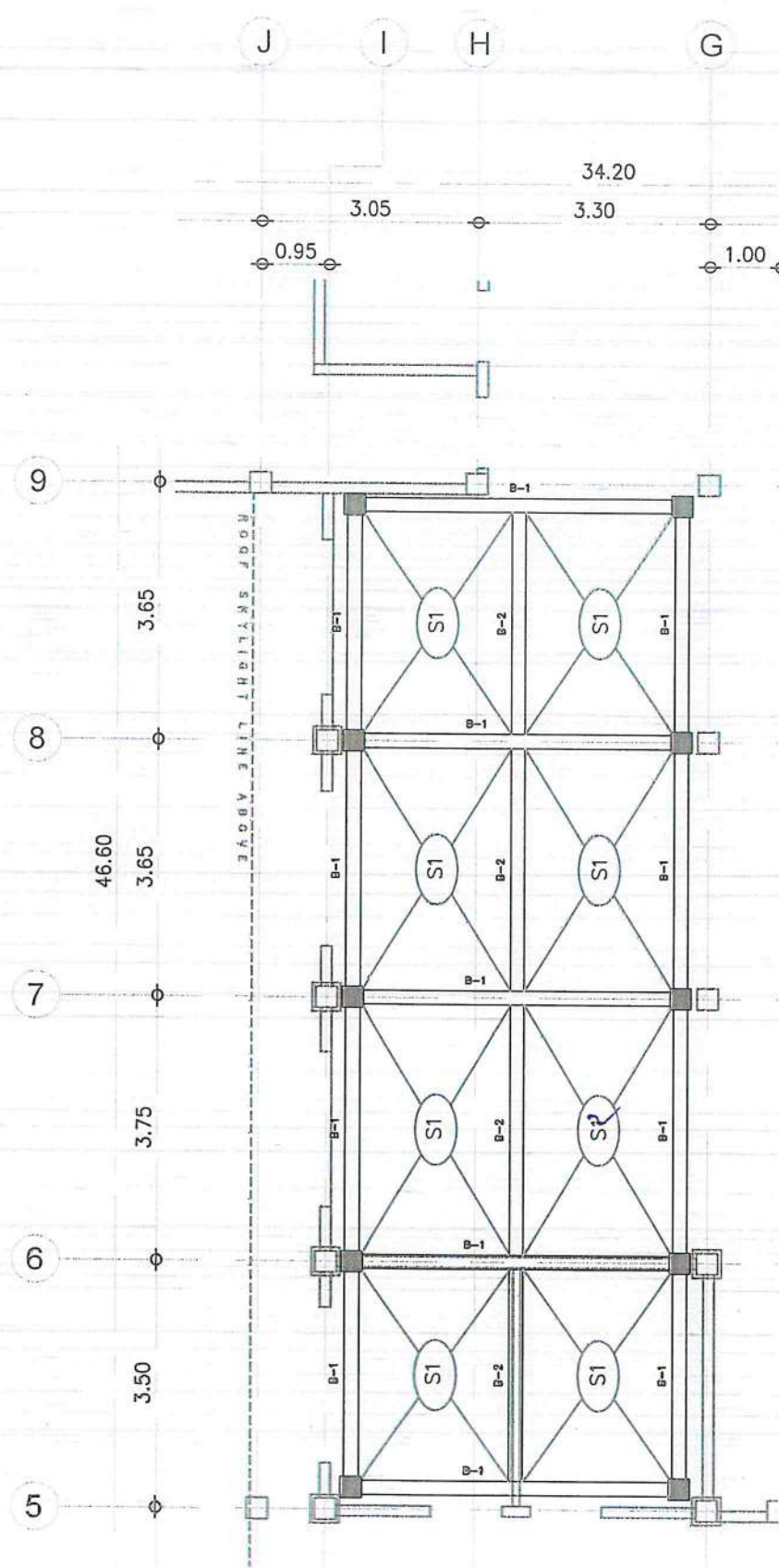
DRAWING SCALE: SHEET NO:
AS SHOWN S 004



1
S 05
ROOF FRAMING PLAN
KEY PLAN
SCALE: 1:750M





2
S 05
ROOF DECK FRAMING PLAN 'A'
SCALE: 1:100M



3
S 05
ROOF DECK FRAMING PLAN 'B'
SCALE: 1:100M

S2 -
Two way
slab

 .CAAP 2.jpg CIVIL AVIATION AUTHORITY OF THE PHILIPPINES	
THIS DRAWING IS AN EXCLUSIVE PROPERTY OF CIVIL AVIATION AUTHORITY OF THE PHILIPPINES AND MUST NOT BE REPRODUCED, EXHIBITED, LOANED NOR COPIED IN PART OR IN WHOLE WITHOUT PROPER PERMISSION AND/OR WRITTEN CONSENT FROM THE CAAP DIRECTOR GENERAL	
AERODROME DEVELOPMENT AND MANAGEMENT SERVICE	
INFRASTRUCTURE DEVELOPMENT AND DESIGN DIVISION	
DESIGN STAFF:	INITIAL / DATE
DESIGNED BY:	IDDD
DRAWN BY:	GOF
CHECKED BY:	JCCS
	CJDC
	EJUR
REVIEWED BY:  RAUL R. CRUCENA DIVISION CHIEF III, AED-ADMS	
SUBMITTED BY:  ARNEL F. BORLADO DEPARTMENT MANAGER III, AED-ADMS	
RECOMMENDED APPROVAL:  LT COL. VALENTINO A. DIONEL A PAF (RET) ASSISTANT DIRECTOR GENERAL II, ADMS	
APPROVED:  CAPTAIN MANUEL ANTONIO L. TAMAYO DIRECTOR GENERAL	
NOTES / REVISIONS:	
PROJECT TITLE:	
IMPROVEMENT/EXPANSION OF PASSENGER TERMINAL BUILDING	
LOCATION:	
BASCO AIRPORT BASCO, BATANES	
SHEET CONTENTS:	
DRAWING SCALE:	SHEET NO:
AS SHOWN	S 005

.CAAP 2.jpg



CIVIL AVIATION AUTHORITY OF THE PHILIPPINES

THIS DRAWING IS AN EXCLUSIVE PROPERTY OF CIVIL AVIATION AUTHORITY OF THE PHILIPPINES AND MUST NOT BE REPRODUCED, EXHIBITED, LOANED NOR COPIED IN PART OR IN WHOLE WITHOUT PROPER PERMISSION AND/OR WRITTEN CONSENT FROM THE CAAP DIRECTOR GENERAL

AERODROME DEVELOPMENT AND MANAGEMENT SERVICE

INFRASTRUCTURE DEVELOPMENT AND DESIGN DIVISION

DESIGN STAFF: INITIAL / DATE
DESIGNED BY: IDDD
DRAWN BY: GOF
CHECKED BY: JCCS
CJOC
EJD,R

REVIEWED BY:

RAUL R. KRUCENA
Division Chief-JR, AED-ADMS

SUBMITTED BY:

ARNEL F. BORLADO
Department Manager III, AED-ADMS

RECOMMENDED APPROVAL:

LT COL. VALENTINO A. DIONELA PAF (RET)
Assistant Director General II, ADMS

APPROVED:

CAPTAIN MANUEL ANTONIO L. TAMAYO
Director General

NOTES / REVISIONS:

PROJECT TITLE:

IMPROVEMENT/EXPANSION OF PASSENGER TERMINAL BUILDING

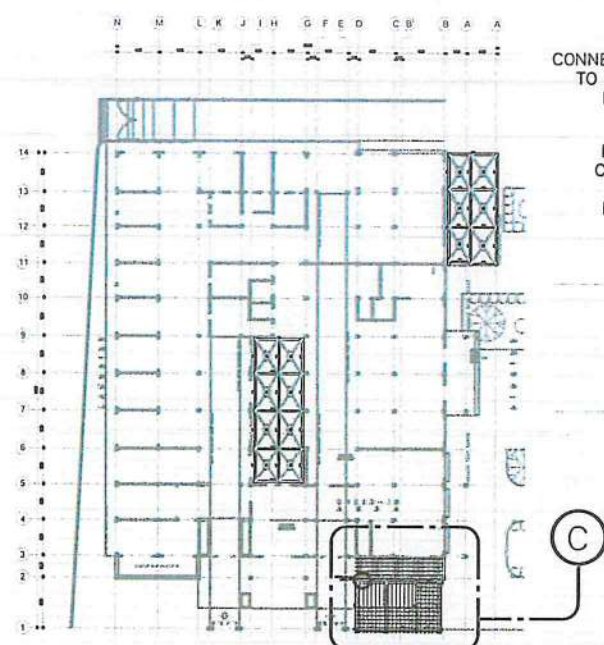
LOCATION:

BASCO AIRPORT
BASCO, BATANES

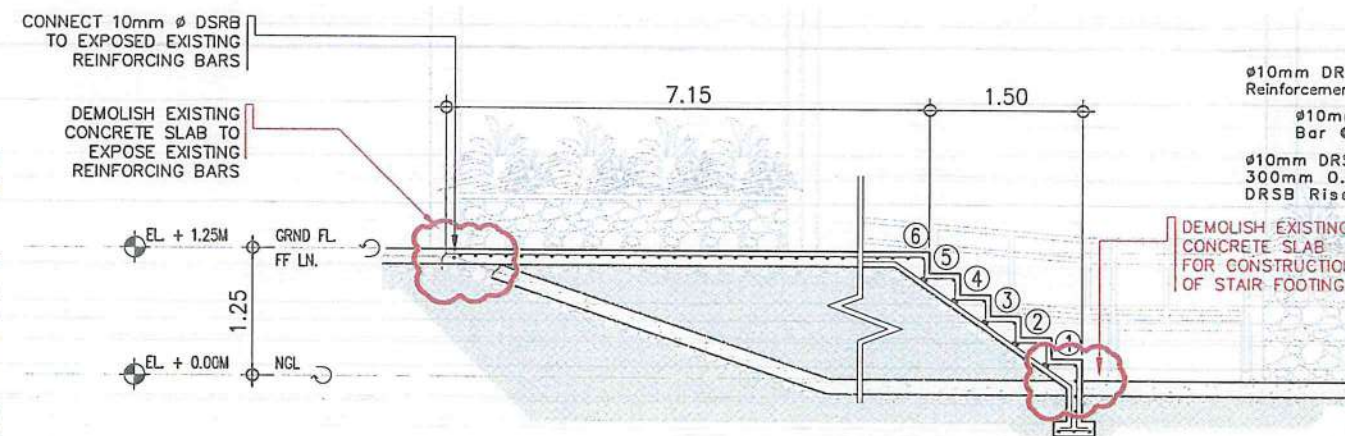
SHEET CONTENTS:

DRAWING SCALE: SHEET NO:

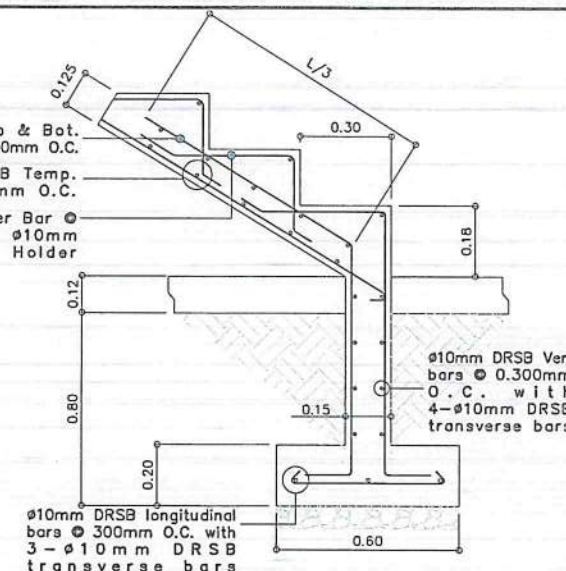
AS SHOWN S 006



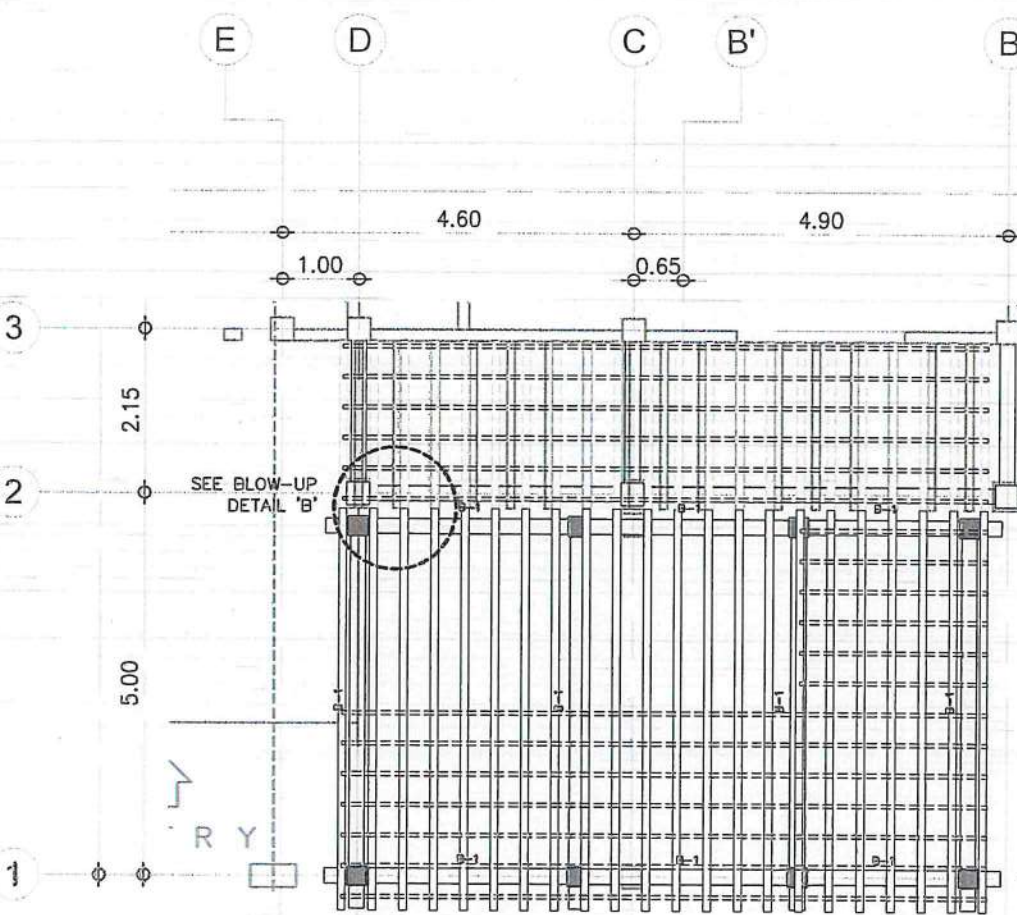
1 ROOF FRAMING PLAN
KEY PLAN
SCALE: 1:750M



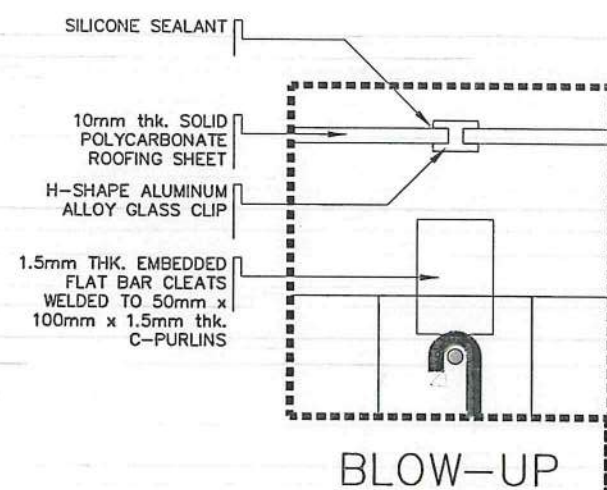
3 MAIN ENTRY
BLOW UP DETAIL 'A'
SCALE: 1:75M



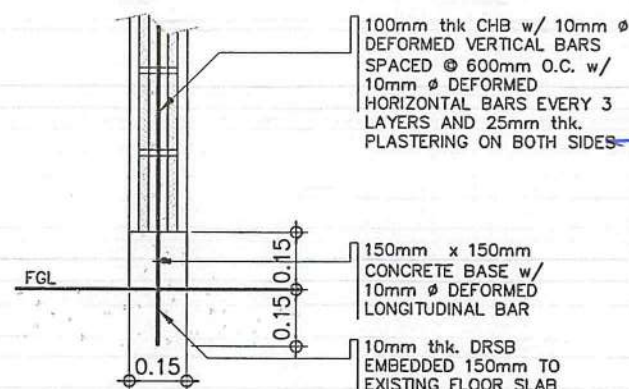
STAIR BLOW-UP



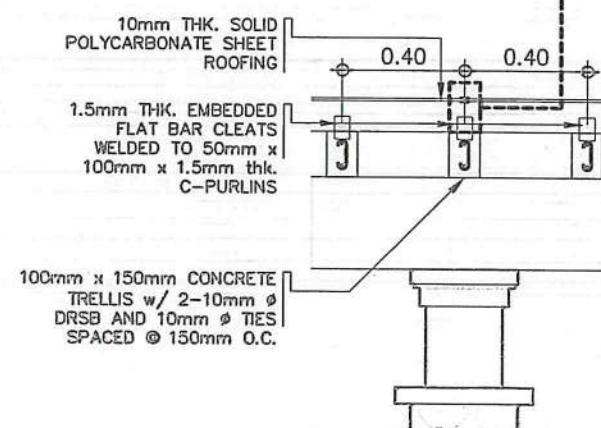
2 ROOF FRAMING PLAN 'C'
SCALE: 1:100M



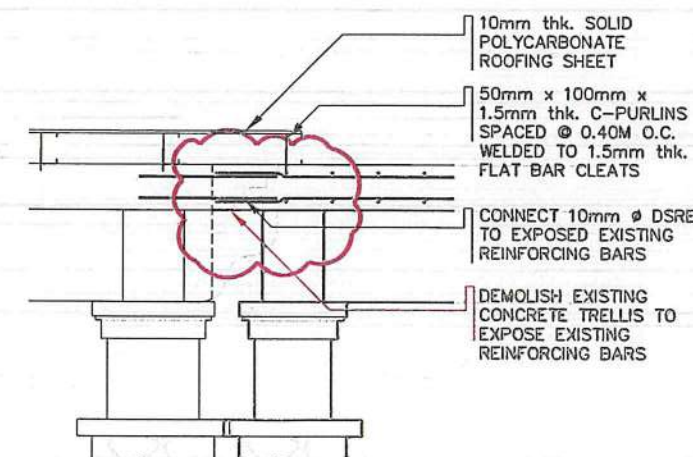
BLOW-UP



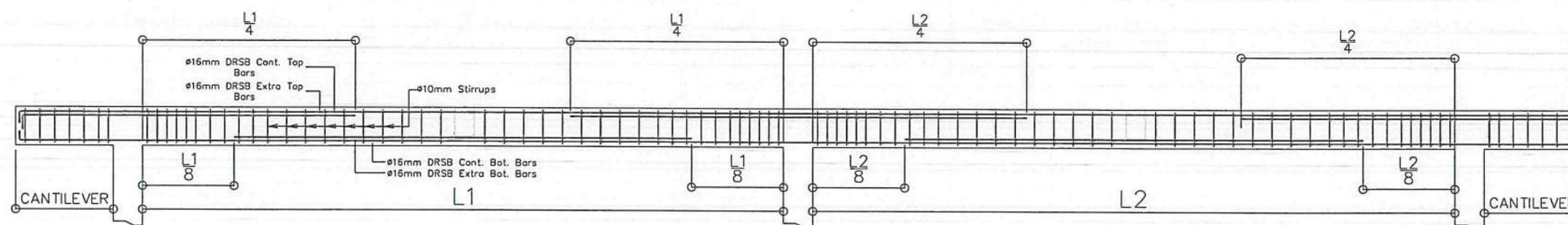
4 INTERIOR WALL CONNECTION
BLOW-UP DETAIL
SCALE: 1:20M



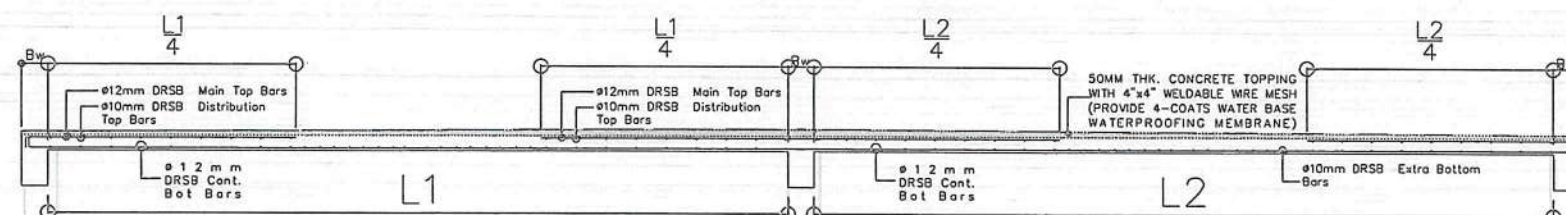
5 CONCRETE TRELLIS CONNECTION
BLOW-UP DETAIL 'B'
SCALE: 1:25M



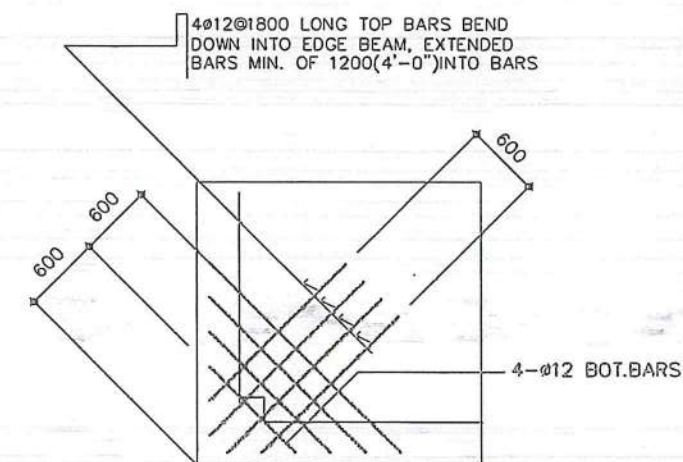
MARK	DIMENSION (MILLIMETERS)	BEAM SECTION						STIRRUPS (10mmØ DRSB)	LENGTH (METERS)	REMARKS
		LEFT	COUNT	MID	COUNT	RIGHT	COUNT			
FTB	200MMx300MM		2-12mmØ TOP BARS 2-12mmØ BOTTOM BARS		2-12mmØ TOP BARS 2-12mmØ BOTTOM BARS		2-12mmØ TOP BARS 2-12mmØ BOTTOM BARS	1 - 50mm, 3 - 100mm, 5 - 150mm, REST 200mm O.C. TIES: # 16 G.I. TIE WIRE	VARIES	
B-1	200MMx400MM		3-16mmØ TOP BARS 2-16mmØ BOTTOM BARS		3-16mmØ TOP BARS 2-16mmØ BOTTOM BARS		3-16mmØ TOP BARS 2-16mmØ BOTTOM BARS	1-50mm, 4-100mm, 6-150mm, REST 180mm O.C. TIES: # 16 G.I. TIE WIRE	VARIES	
B-2	200MMx300MM		3-12mmØ TOP BARS 2-12mmØ BOTTOM BARS		2-12mmØ TOP BARS 3-12mmØ BOTTOM BARS		3-12mmØ TOP BARS 2-12mmØ BOTTOM BARS	1-50mm, 4-100mm, 6-150mm, REST 180mm O.C. TIES: # 16 G.I. TIE WIRE	VARIES	
B-3	250MMx400MM		4-16mmØ TOP BARS 3-16mmØ BOTTOM BARS		3-16mmØ TOP BARS 4-16mmØ BOTTOM BARS		4-16mmØ TOP BARS 3-16mmØ BOTTOM BARS	1-50mm, 4-100mm, 6-150mm, REST 180mm O.C. TIES: # 16 G.I. TIE WIRE	7.00M	
SLAB		BOTTOM REINFORCEMENT				TOP REINFORCEMENT				
		ALONG SHORT SPAN		ALONG LONG SPAN		OVER LONG SUPPORT		OVER SHORT SUPPORT		
LABEL	TYPE	"T"	CONTINUOUS		CONTINUOUS		CONT. BARS	CUT BARS	DIST. BARS	
S-1	TWO-WAY	125	Ø12@200		Ø12@200		-	Ø12@200	Ø10@200	



1 TYPICAL BEAM SECTION
SCALE: NTS



2 TYPICAL SLAB SECTION
SCALE: NTS



TYPICAL CORNER SLAB DETAIL



THIS DRAWING IS AN EXCLUSIVE PROPERTY OF CIVIL AVIATION AUTHORITY OF THE PHILIPPINES AND MUST NOT BE REPRODUCED, EXHIBITED, LOANED NOR COPIED IN PART OR IN WHOLE WITHOUT PROPER PERMISSION AND/OR WRITTEN CONSENT FROM THE CAAP DIRECTOR GENERAL

AERODROME DEVELOPMENT AND MANAGEMENT SERVICE

INFRASTRUCTURE DEVELOPMENT AND DESIGN DIVISION

DESIGN STAFF:	INITIAL / DATE
DESIGNED BY:	IDD
DRAWN BY:	GOF
CHECKED BY:	JCCS
APPROVED BY:	CJDC
	EJDR

REVIEWED BY:
RAUL R. CRUCENA
DIVISION CHIEF-III, IDDD-ADMS

SUBMITTED BY:
ARNEL F. BORLADO
DEPARTMENT MANAGER III, AED-ADMS

RECOMMENDED APPROVAL:
LT COL. VALENTINO A. DIONELA PAF (RET.)
ASSISTANT DIRECTOR GENERAL II, ADMS

APPROVED:
CAPTAIN MANUEL ANTONIO L. TAMAYO
DIRECTOR GENERAL

NOTES / REVISIONS:

PROJECT TITLE:
IMPROVEMENT/EXPANSION OF PASSENGER TERMINAL BUILDING

LOCATION:
BASCO AIRPORT
BASCO, BATANES

SHEET CONTENTS:

DRAWING SCALE: AS SHOWN
SHEET NO: S 007

GENERAL NOTES

- IT IS NOT INTENDED THAT THE DRAWINGS SHALL SHOW EVERY PIPE FITTING, VALVE AND APPURTENANCE. ALL SUCH ITEMS WHETHER SPECIFICALLY MENTIONED OR NOT, OR INDICATED ON THE DRAWINGS SHALL BE FURNISHED AND INSTALLED IF NECESSARY TO COMPLETE THE SYSTEM TO THE SATISFACTION OF THE OWNER.
- ALL PLUMBING WORKS SHALL BE INSTALLED IN ACCORDANCE WITH THE PROVISION OF THE NATIONAL PLUMBING CODE OF THE PHILIPPINES, THE REQUIREMENTS OF THE LOCAL PLUMBING INSPECTION OFFICE, PERTINENT PROVISIONS OF THE UNIFORM BUILDING CODE AND THE NATIONAL BUILDING CODE OF THE PHILIPPINES.
- ALL PLUMBING INSTALLATIONS SHALL BE COORDINATED WITH OTHER TRADES. ANY REVISION IN THE PIPING LAYOUT REQUIRED FOR PROPER EXECUTION OF OTHER TRADES SHALL BE WITH PRIOR APPROVAL OF THE PROJECT ENGINEER.
- HORIZONTAL SANITARY SEWER PIPING SHALL BE RUN IN PRACTICAL ALIGNMENT AT A MINIMUM SLOPE OF 1% FOR PIPES 100MMØ AND LARGER AND 2% FOR 75MMØ AND SMALLER.
- ALL VENT PIPE SHALL BE FREE FROM DROPS OR SAGS AND SHALL BE SLOPED OR GRADED AS TO DRIP BACK BY GRAVITY TO THE DRAINAGE PIPE IT SERVES.
- ALL PLUMBING FIXTURES SHALL BE INDIVIDUALLY VENTED.
- ALL DIMENSIONS AND PIPE SIZES ARE IN MILLIMETERS EXCEPT OTHERWISE SHOWN. INDICATED METRIC EQUIVALENT USED ON THESE PLANS FOR PIPE SIZES:

1/2" = 15mm	2" = 50mm	6" = 150mm
3/4" = 20mm	2 1/2" = 65mm	8" = 200mm
1 1/4" = 32mm	3" = 75mm	10" = 250mm
1 1/2" = 40mm	4" = 100mm	12" = 300mm
- THE CONTRACTOR SHALL VERIFY ALL EXISTING UTILITIES AT SITE, SUCH AS, THE ACTUAL PIPE SIZES, LOCATIONS, DEPTHS, TOP AND INVERT ELEVATIONS OF ALL EXISTING PIPES AND RELATED STRUCTURES. THE CONTRACTOR SHALL PROVIDE THE NECESSARY EXCAVATIONS, BACKFILLING AND SURFACE RESTORATION OF THE AFFECTED AREAS IN THE LAYING OF SEWER, STORM DRAINAGE AND SUPPLY LINES.
- CONDENSATE DRAINAGE SYSTEM FOR AIRCONDITIONING EQUIPMENT INCLUDING PIPINGS, FITTINGS, SUPPORTS, ALL REQUIRED ACCESSORIES AND TAPPING PINTS SHALL BE PART OF MECHANICAL WORKS.
- PROVIDE VALVE BOX FOR EACH EMBEDDED GATE VALVE.
- THE SIZES OF WATER SUPPLY FIXTURES SHALL BE IN ACCORDANCE THE MANUFACTURER'S INSTRUCTIONS

MATERIAL SPECIFICATIONS

COLD WATER LINE

- SHALL BE POLYPROPYLENE RANDOM (TYPE 3) PN 20; HIGH RESISTANCE TO PRESSURE AN TEMPERATURE, CONFORMING TO EN ISO 15874, SIMILAR TO GEORGE FISCHER, NELTEX, UNITEC PP-R PIPE OR APPROVED EQUIVALENT

SOIL, WASTE AND VENT LINES

- SHALL BE UNPLASTICIZED POLYVINYL CHLORIDE (uPVC) PIPE CONFORMING TO ASTM D2729, SIMILAR TO NELTEX, MOLDEX OR EMERALD SERIES 1000 uPVC OR APPROVED EQUAL.

DOWNSPOUTS AND DRAINAGE LINE (INSIDE AND OUTSIDE OF BUILDING)

- SHALL BE UNPLASTICIZED POLYVINYL CHLORIDE (uPVC) PIPE AND FITTINGS FOR 10
- 100mmØ AND SMALLER CONFORMING TO ASTM D2729, SIMILAR TO NELTEX, MOLDEX OR EMERALD SERIES 1000 uPVC OR APPROVED EQUIVALENT.
- SHALL BE HIGH DENSITY POLYETHYLENE (HDPE) PIPE AND FITTINGSS FOR 300mmØ AND LARGER, PE 3408 SDR 17 CONFORMING TO ASTM D3350, ASTM F714, AND ASTM D3261

PLUMBING LEGEND AND SYMBOLS

---	COLD WATERLINE	CWDF	COLD WATER DOWN FEED	LAV	LAVATORY
—	SOIL PIPE/ WASTE PIPE	BS	BIDET SPRAY	PD	PLANTER'S DRAIN
—	VENT PIPE	CWR	COLD WATER RISER	RD	ROOF DRAIN
---	END CAP	DD	DECK DRAIN	RED	REDUCER
—	FLOOR CLEANOUT	DP	DRAIN PIPE	SHO	SHOWER HEAD
—	GROUND CLEANOUT	DS	DOWNSPOUT	SP	SOIL PIPE
+	GATE VALVE	EPDR/L	ELEVATOR PIT PIPE DISCHARGE RISER/LINE	SS	SLOP SINK
+	CHECK VALVE	FD	FLOOR DRAIN	UR	URINAL
+	WATER METER	GD	GUTTER DRAIN	VS	VENT STACK
+	INCREASER/ REDUCER	GT	GREASE TRAP	VSTD	VENT STACK THRU DECK
CB/AD	CATCH BASIN/ AREA DRAIN	HB	HOSE BIBB	VSTR	VENT STACK THRU ROOF
ST	SEPTIC TANK	KLAV	KID'S LAVATORY	VSTW	VENT STACK THRU WALL
AAV	AIR ADMITTANCE VALVE	KS	KITCHEN SINK	WC	WATER CLOSET
CSWS	COMBINED SOIL AND WASTE STACK	KUR	KID'S URINAL	WP	WASTE PIPE

EQUIVALENT PIPE SIZE FOR WATER PIPES

NOMINAL PIPE SIZE DIAMETER	PIPE SIZES IN MILLIMETERS (mm)							
	15	20	25	32	40	50	63	75
POLYPROPYLENE RANDOM (PPR)	20	25	32	40	50	63	75	100
UNPLASTICIZED POLYVINYL CHLORIDE (uPVC)	15	19	25	32	40	50	65	80

PLUMBING FIXTURE CONNECTION SCHEDULE

DESCRIPTION	SYMBOL	WATER SUPPLY PIPE SIZE (mm)	SOIL/ WASTE PIPE SIZE (mm)	TRAP SIZE (mm)
KITCHEN SINK	KS	15	50	38
LAVATORY	LAV	15	50	38
SERVICE SINK/ SLOP SINK	SSK/SS	15	75	50
SHOWER	SHO	15	50	50
URINAL	UR	20	50	INTEGRAL
WATER CLOSET (FLUSH TANK)	WC	15	100	INTEGRAL
WATER CLOSET (FLUSH VALVE)	WC	32	100	INTEGRAL



THIS DRAWING IS AN EXCLUSIVE PROPERTY OF CIVIL AVIATION AUTHORITY OF THE PHILIPPINES AND MUST NOT BE REPRODUCED, EXHIBITED, LOANED NOR COPIED IN PART OR IN WHOLE WITHOUT PROPER PERMISSION AND/OR WRITTEN CONSENT FROM THE CAAP DIRECTOR GENERAL.

AERODROME DEVELOPMENT AND MANAGEMENT SERVICE

INFRASTRUCTURE DEVELOPMENT AND DESIGN DIVISION

DESIGN STAFF: INITIAL / DATE
 DESIGNED BY: IDDD
 DRAWN BY:
 CHECKED BY: CJC
 EJDJR

REVIEWED BY:
 RAL R. CRUCENA
 ACTING DIVISION CHIEF III, IDDD-ADMS

SUBMITTED BY:
 ARNEL F. BORLADO
 DEPARTMENT MANAGER III, AED-ADMS

RECOMMENDED APPROVAL:
 LT COL. VALENTINO A. DIONELA PAF (RET)
 ASSISTANT DIRECTOR GENERAL II, ADMS

APPROVED:
 CAPTAIN MANUEL ANTONIO L. TAMAYO
 DIRECTOR GENERAL

NOTES / REVISIONS:

PROJECT TITLE:
 IMPROVEMENT/EXPANSION OF PASSENGER TERMINAL BUILDING

LOCATION:
 BASCO AIRPORT
 BASCO, BATANES

SHEET CONTENTS:

DRAWING SCALE: SHEET NO:
 AS SHOWN P 00


THIS DRAWING IS AN EXCLUSIVE PROPERTY OF CIVIL AVIATION AUTHORITY OF THE PHILIPPINES AND MUST NOT BE REPRODUCED, EXHIBITED, LOANED NOR COPIED IN PART OR IN WHOLE WITHOUT PROPER PERMISSION AND/OR WRITTEN CONSENT FROM THE CAAP DIRECTOR GENERAL

AERODROME DEVELOPMENT AND MANAGEMENT SERVICE

INFRASTRUCTURE DEVELOPMENT AND DESIGN DIVISION

DESIGN STAFF:	INITIAL / DATE
DESIGNED BY:	IODD
DRAWN BY:	
CHECKED BY:	CJOC EJOJR

REVIEWED BY:


 RAUL R. CRUCENA
 DIVISION CHIEF III, IODD-ADMS


SUBMITTED BY:


 ARNEL F. BORLADO
 DEPARTMENT MANAGER III, AED-ADMS

RECOMMENDED APPROVAL:


 LT COL VALENTINO A. DIONELA PAF (RET)
 ASSISTANT DIRECTOR GENERAL II, ADMS

APPROVED:


 CAPTAIN MANUEL ANTONIO L. TAMAYO
 DIRECTOR GENERAL

NOTES / REVISIONS:

PROJECT TITLE:

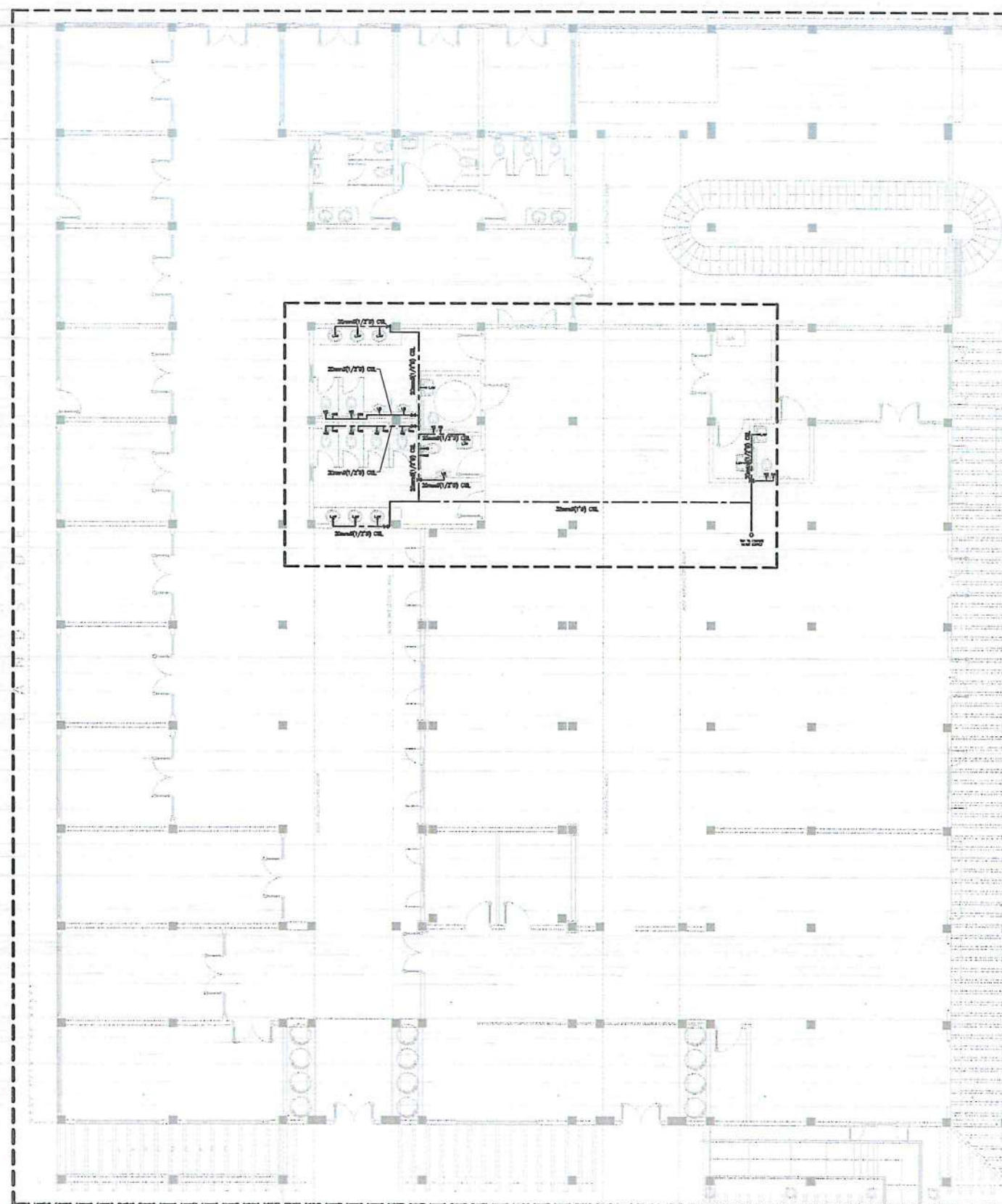
IMPROVEMENT/EXPANSION OF PASSENGER TERMINAL BUILDING

LOCATION:

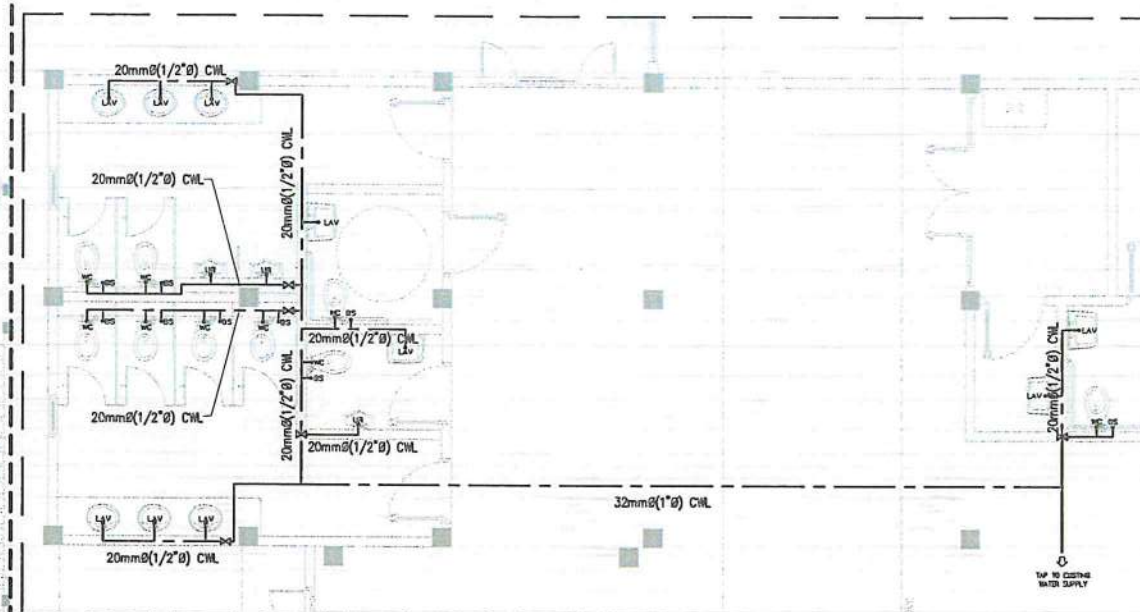
BASCO AIRPORT
BASCO, BATANES

SHEET CONTENTS:

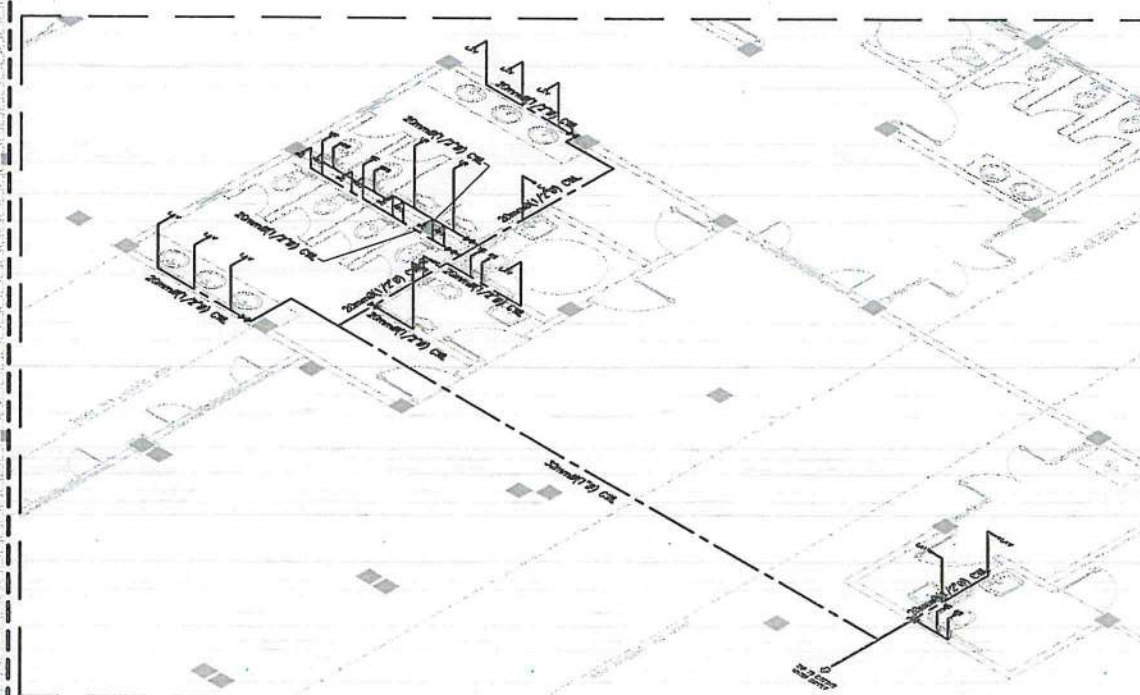
DRAWING SCALE:	SHEET NO:
AS SHOWN	P 01



1 WATER SYSTEM PIPING LAYOUT
 SCALE: 1:200M



PLAN



ISOMETRIC

2 ENLARGED WATERLINE SYSTEM
 SCALE: 1:120M



CIVIL AVIATION AUTHORITY OF THE PHILIPPINES
BAGONG PILIPINAS

THIS DRAWING IS AN EXCLUSIVE PROPERTY
OF CIVIL AVIATION AUTHORITY OF THE
PHILIPPINES AND MUST NOT BE REPRODUCED,
EXHIBITED, LOANED NOR COPIED IN PART OR
IN WHOLE WITHOUT PROPER PERMISSION
AND/OR WRITTEN CONSENT FROM THE CAAP
DIRECTOR GENERAL

AERODROME DEVELOPMENT
AND MANAGEMENT SERVICE

INFRASTRUCTURE DEVELOPMENT
AND DESIGN DIVISION

DESIGN STAFF: INITIAL / DATE

DESIGNED BY: IDDD

DESIGN BY: IDDD

CHECKED BY: C.JOC

E.J.O.R

REVIEWED BY:

RAUL R. CRUZENA
DIVISION CHIEF III, IDDD-ADMS

SUBMITTED BY:

ARNEL F. BORLADO
DEPARTMENT MANAGER III, AED-ADMS

RECOMMENDED APPROVAL:

LT COL. VALENTINO A. DIONELA PAF (RET)
ASSISTANT DIRECTOR GENERAL II, ADMS

APPROVED:

CAPTAIN MANUEL ANTONIO L. TAMAYO
DIRECTOR GENERAL

NOTES / REVISIONS:

PROJECT TITLE:

IMPROVEMENT/EXPANSION
OF PASSENGER TERMINAL
BUILDING

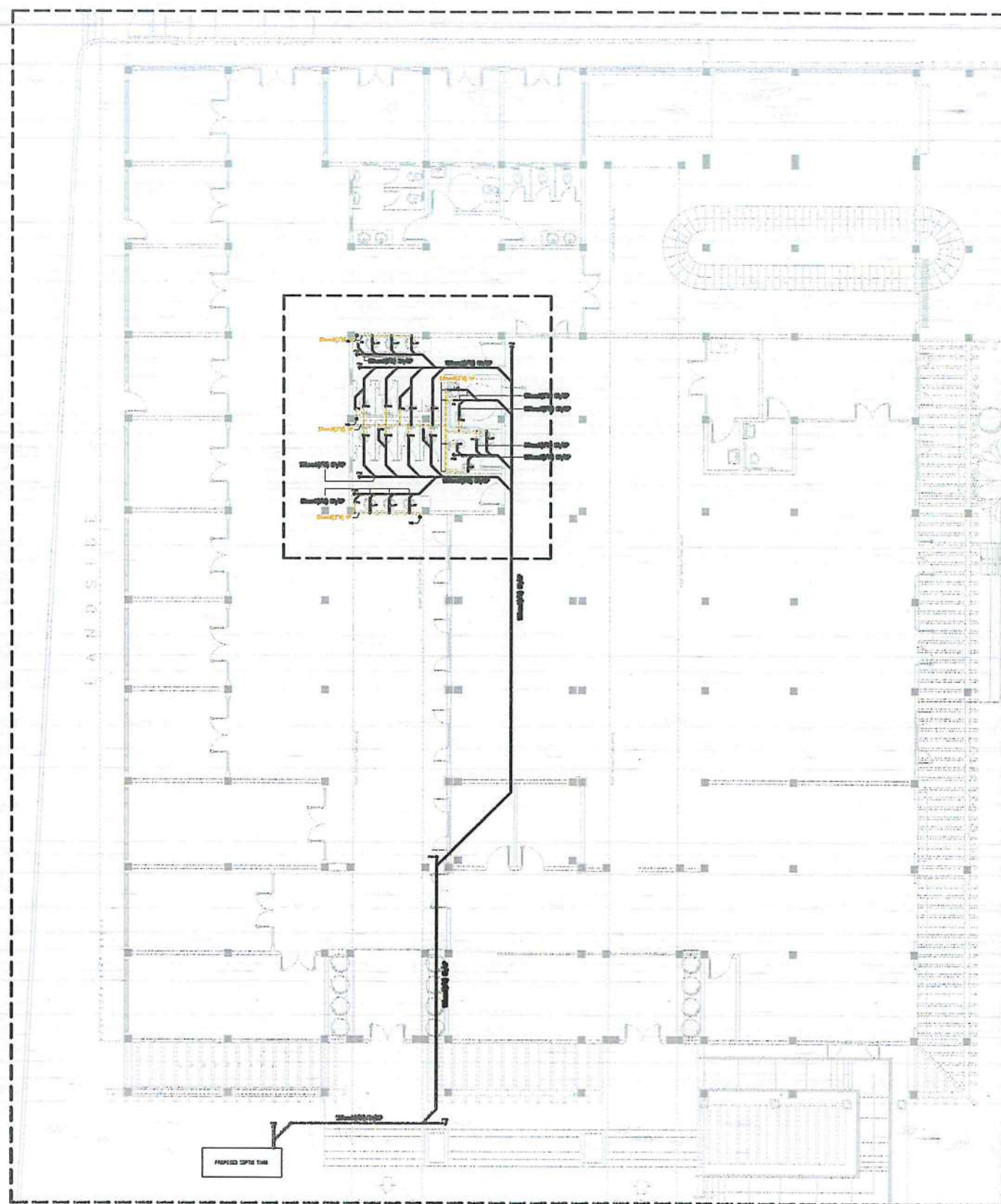
LOCATION:

BASCO AIRPORT
BASCO, BATANES

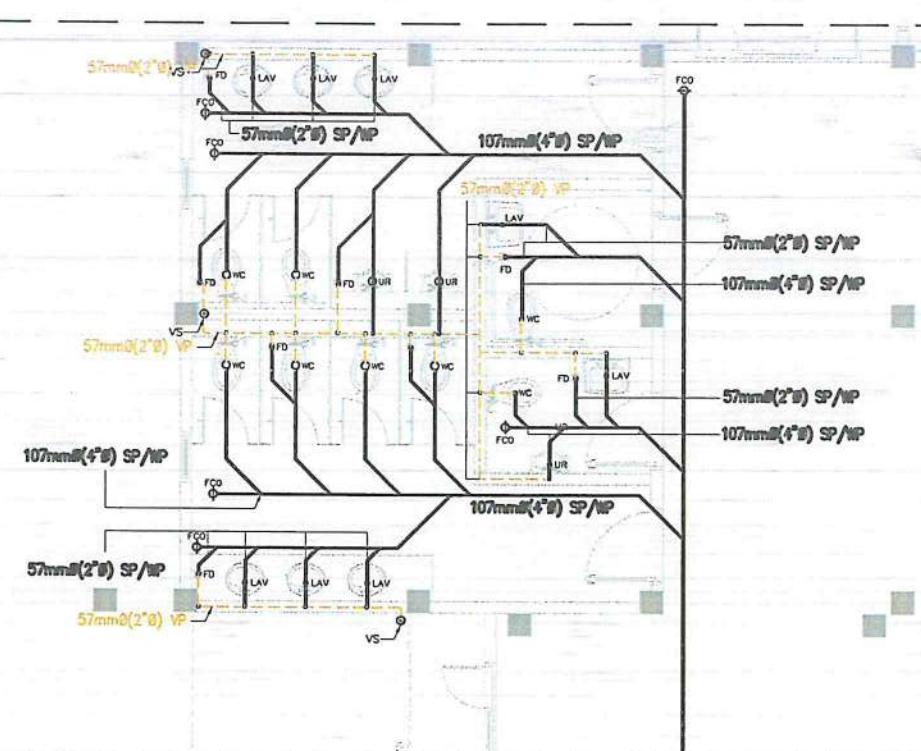
SHEET CONTENTS:

DRAWING SCALE: SHEET NO.

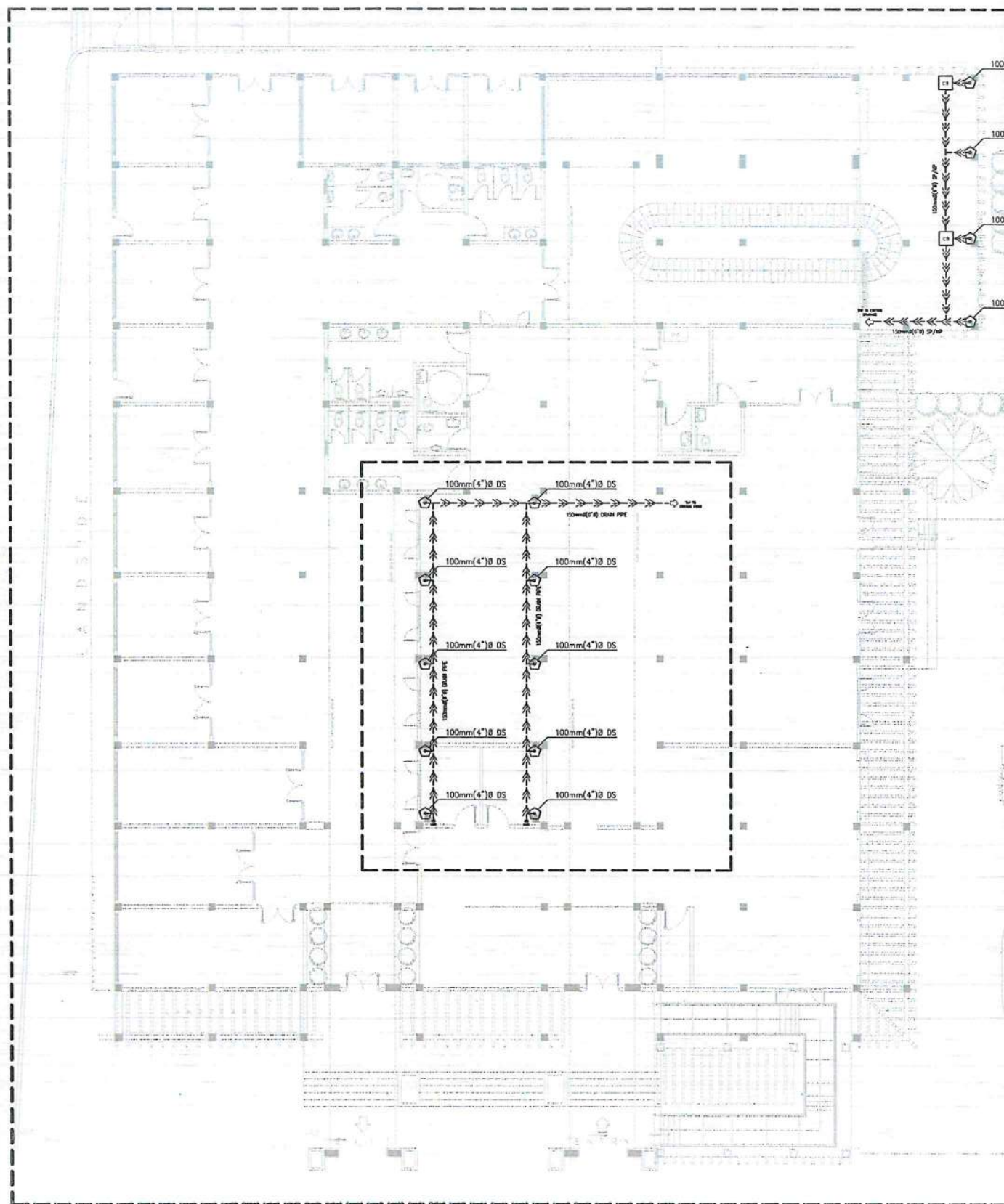
AS SHOWN P 02



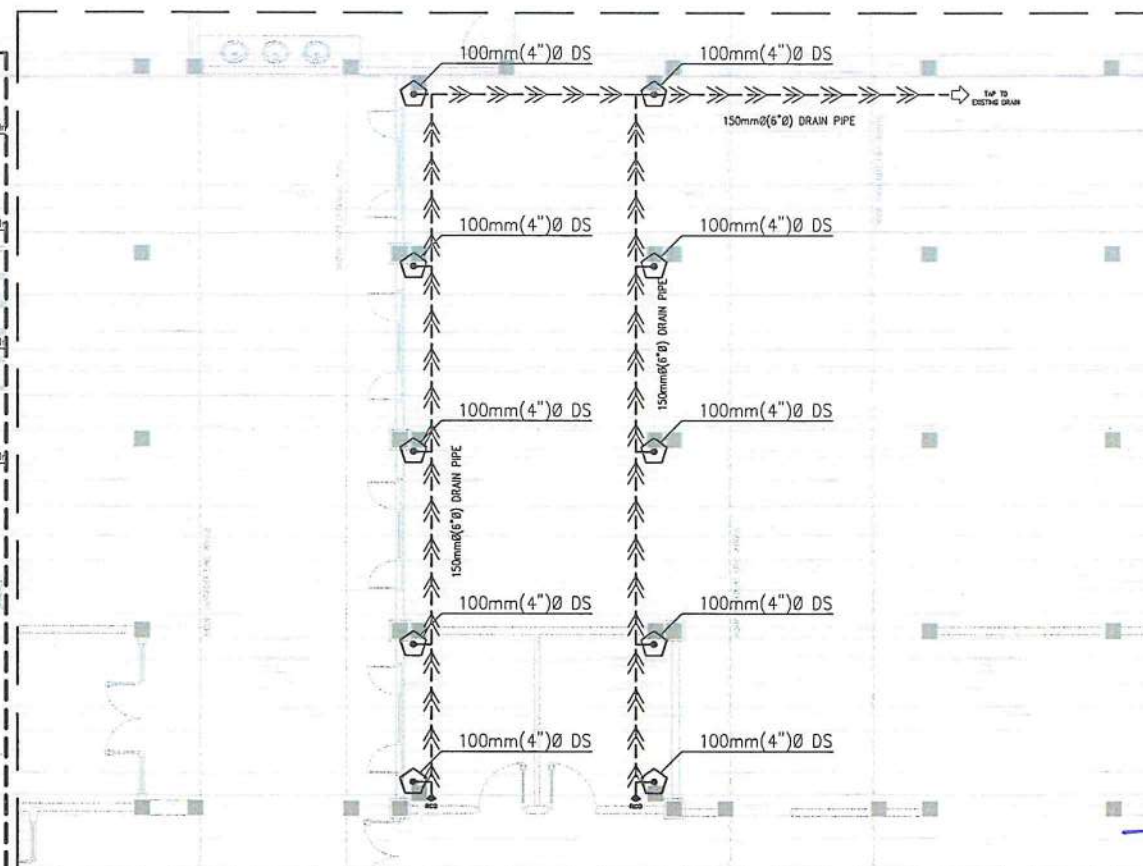
1 BASCO AIRPORT
SEWERLINE SYSTEM PIPING LAYOUT
SCALE: 1:200M



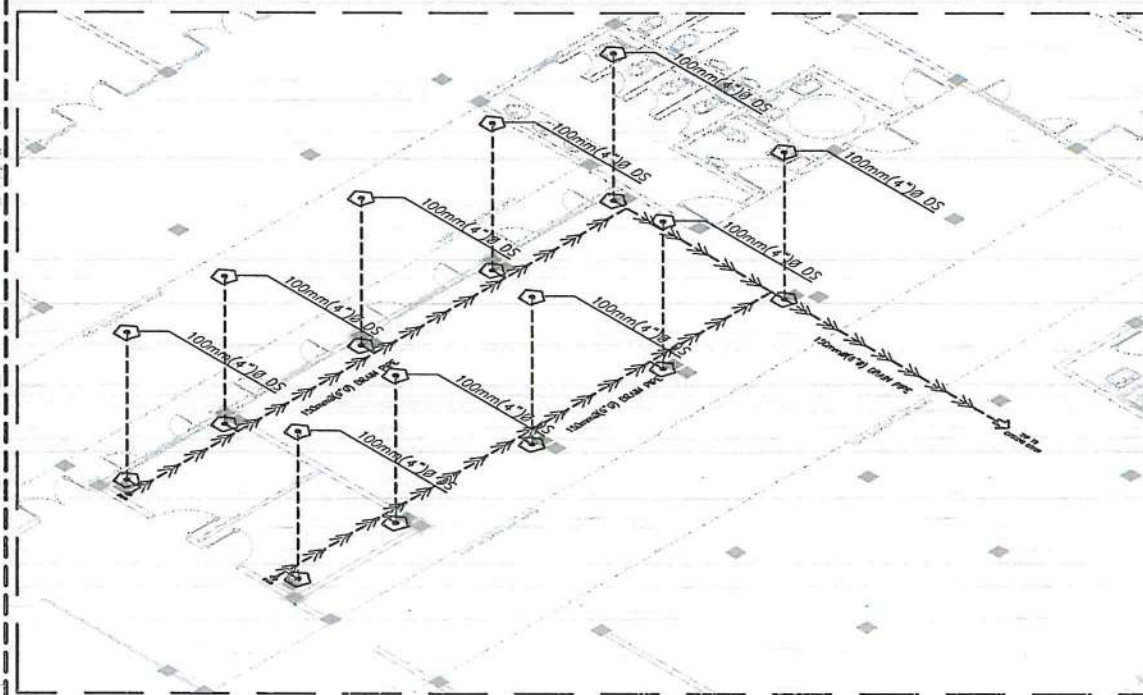
2 ENLARGED
SEWERLINE SYSTEM
SCALE: 1:100M



1 BASCO AIRPORT
STORM DRAINAGE SYSTEM PIPING LAYOUT
SCALE: 1:200M



PLAN



ISOMETRIC

2 ENLARGED
DECK DRAIN LAYOUT
SCALE: 1:150M



THIS DRAWING IS AN EXCLUSIVE PROPERTY OF CIVIL AVIATION AUTHORITY OF THE PHILIPPINES AND MUST NOT BE REPRODUCED, EXHIBITED, LOANED NOR COPIED IN PART OR IN WHOLE WITHOUT PROPER PERMISSION AND/OR WRITTEN CONSENT FROM THE CAAP DIRECTOR GENERAL.

AERODROME DEVELOPMENT AND MANAGEMENT SERVICE

INFRASTRUCTURE DEVELOPMENT AND DESIGN DIVISION

DESIGNED BY:	INITIAL / DATE
DRAWN BY:	IDDO
CHECKED BY:	CJOC EJDR

REVIEWED BY:

RAUL R. GRUCENA
DIVISION CHIEF III, IDDO-ADMS

SUBMITTED BY:

ARNEL F. BORLADO
DEPARTMENT MANAGER III, AED-ADMS

RECOMMENDED APPROVAL:

L.T. COL. VALENTINO A. DIONELA PAF (RET)
ASSISTANT DIRECTOR GENERAL II, ADMS

APPROVED:

CAPTAIN MANUEL ANTONIO L. TAMAYO
DIRECTOR GENERAL

NOTES / REVISIONS:

PROJECT TITLE:

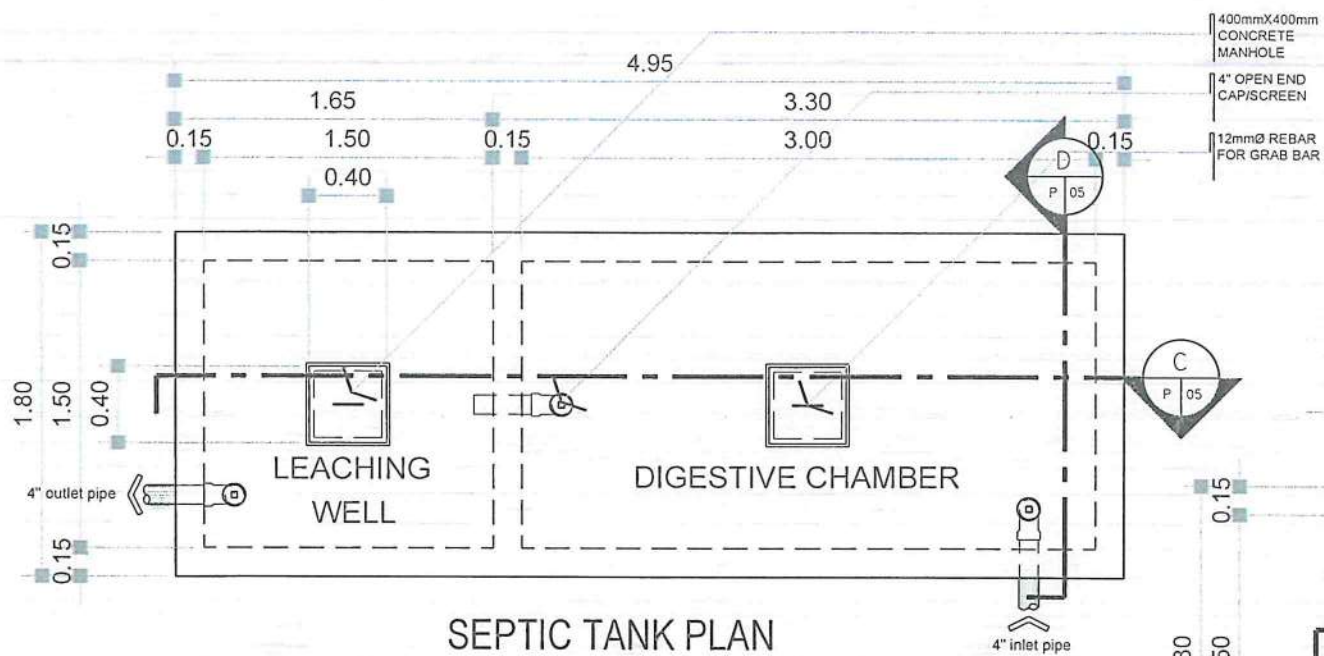
IMPROVEMENT/EXPANSION OF PASSENGER TERMINAL BUILDING

LOCATION:

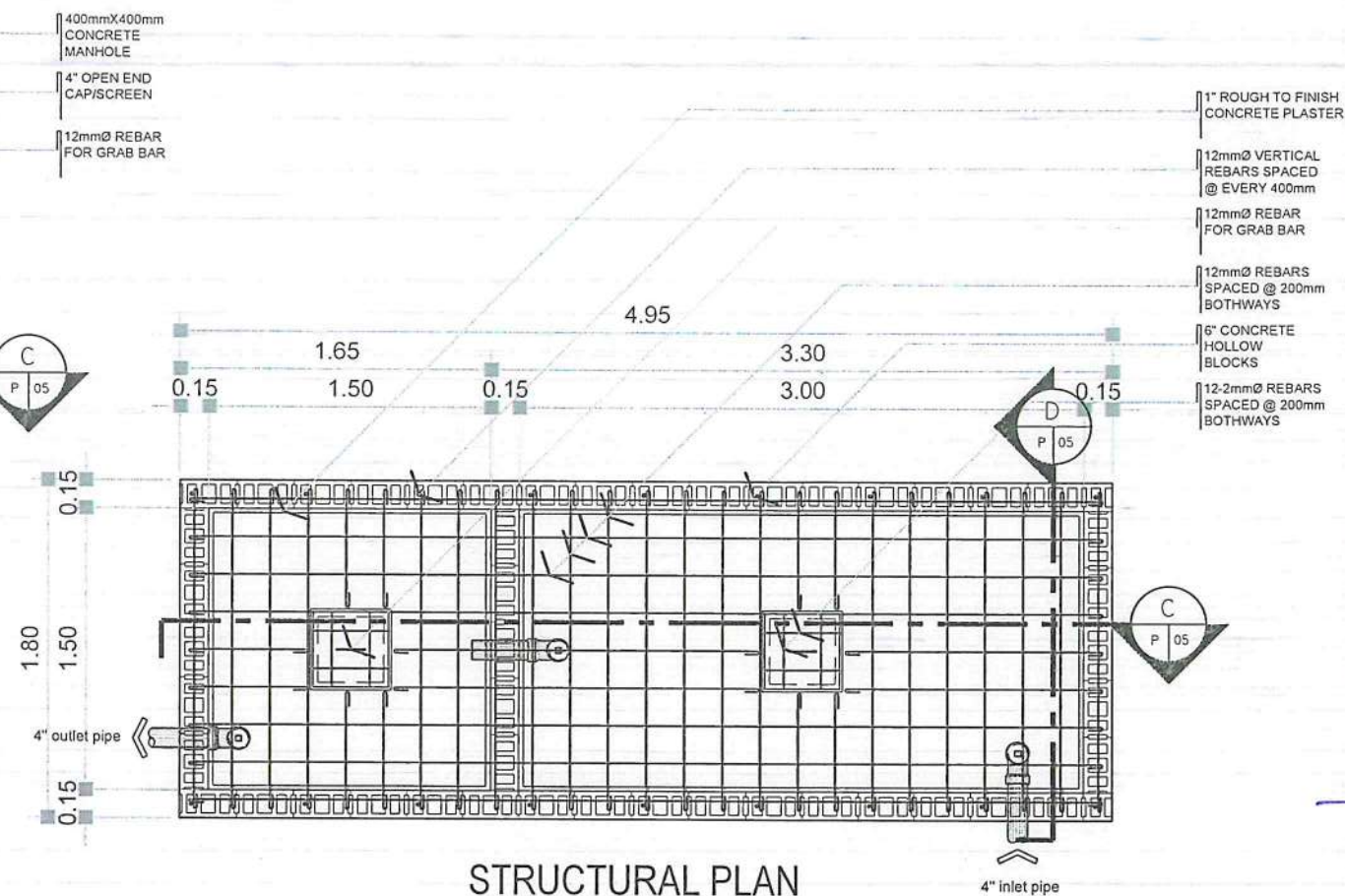
BASCO AIRPORT
BASCO, BATANES

SHEET CONTENTS:

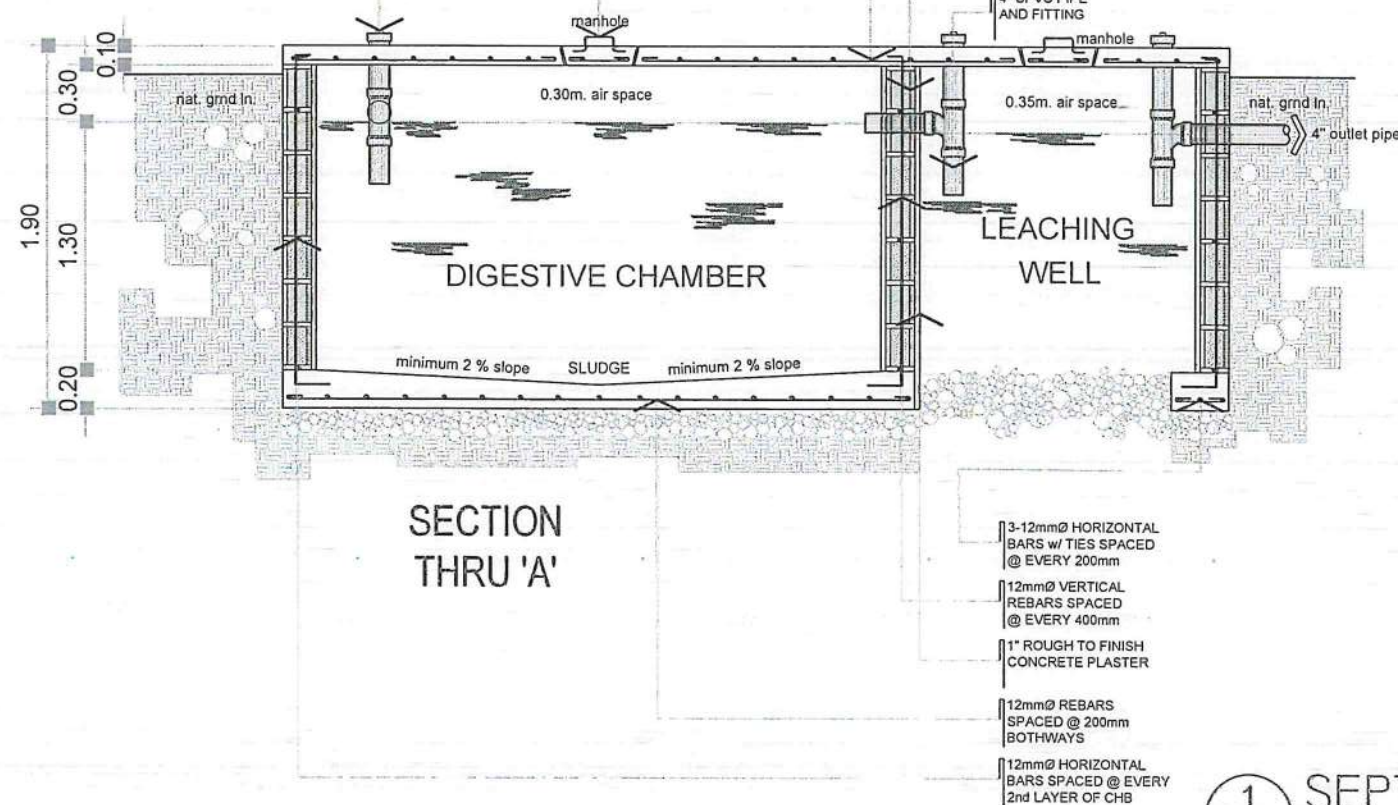
DRAWING SCALE:	SHEET NO:
AS SHOWN	P 03



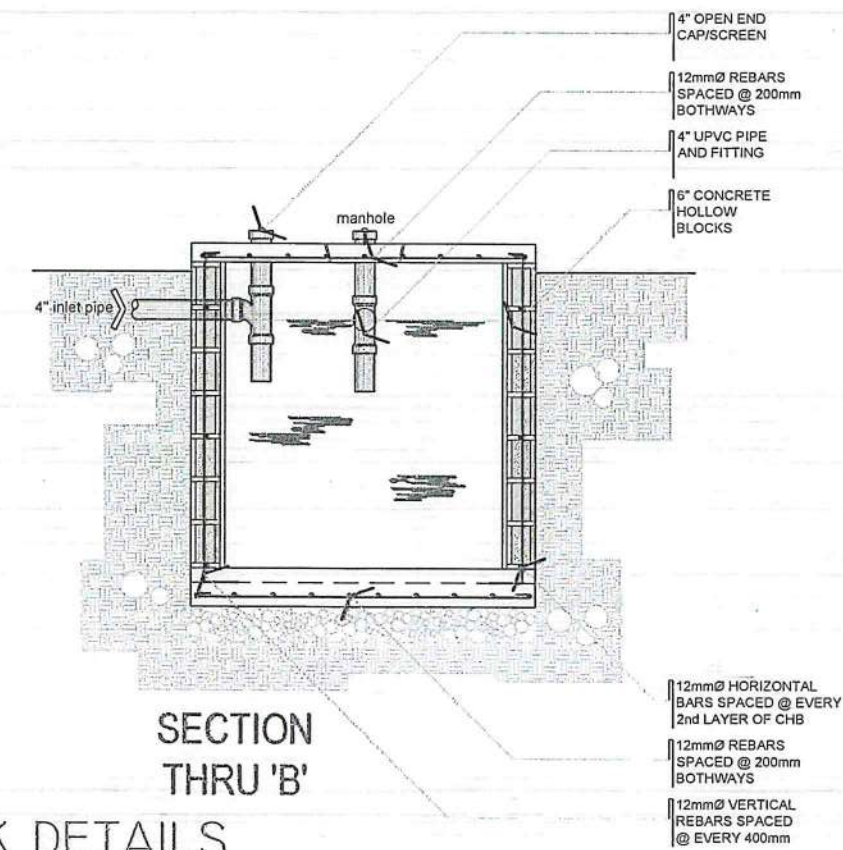
SEPTIC TANK PLAN



STRUCTURAL PLAN



SECTION THRU 'A'



SECTION THRU 'B'

1 SEPTIC TANK DETAILS
P 05 SCALE: 1:40



THIS DRAWING IS AN EXCLUSIVE PROPERTY OF CIVIL AVIATION AUTHORITY OF THE PHILIPPINES AND MUST NOT BE REPRODUCED, EXHIBITED, LOANED NOR COPIED IN PART OR IN WHOLE WITHOUT PROPER PERMISSION AND/OR WRITTEN CONSENT FROM THE CAAP DIRECTOR GENERAL.

AERODROME DEVELOPMENT AND MANAGEMENT SERVICE

INFRASTRUCTURE DEVELOPMENT AND DESIGN DIVISION

DESIGN STAFF: INITIAL / DATE

DESIGNED BY: IDDD

DRAWN BY: CUDC

CHECKED BY: EUDR

REVIEWED BY:

RAUL R. CRUCENA
DIVISION CHIEF III, IDDD-ADMS

SUBMITTED BY:

ARNEL F. BORLADO
DEPARTMENT MANAGER III, AED-ADMS

RECOMMENDED APPROVAL:

LT. COL. VALENTINO A. DIONELA PAF (RET)
ASSISTANT DIRECTOR GENERAL II, ADMS

APPROVED:

CAPTAIN MANUEL ANTONIO L. TAMAYO
DIRECTOR GENERAL

NOTES / REVISIONS:

PROJECT TITLE:

IMPROVEMENT/EXPANSION OF PASSENGER TERMINAL BUILDING

LOCATION:

BASCO AIRPORT
BASCO, BATANES

SHEET CONTENTS:

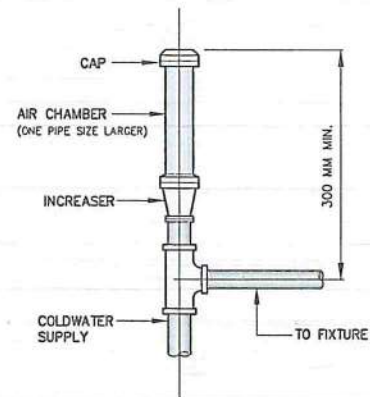
DRAWING SCALE:

AS SHOWN

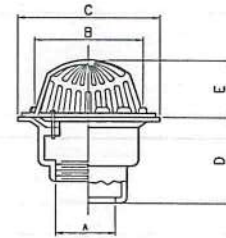
SHEET NO:

P 05

AIR CHAMBER

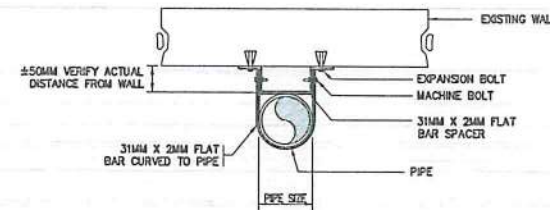


ROOF/GUTTER DRAIN

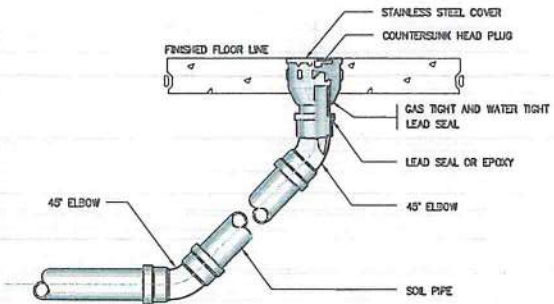


PIPE SIZE A(mm)	B	C	D	E	REMARKS
50	105	178	82	79	SIMILAR TO MODEL JPI-123 OR APPROVED EQUAL
75	105	178	82	79	
100	105	178	82	79	
200	240	254	82	97	

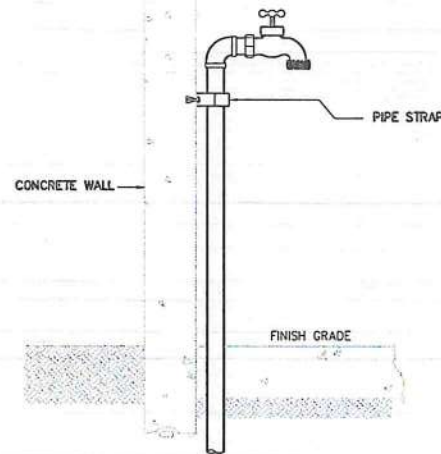
OFFSET PIPE CLAMP



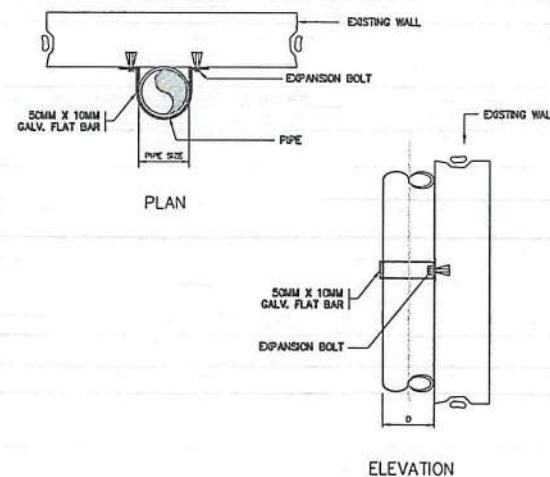
FLOOR CLEANOUT



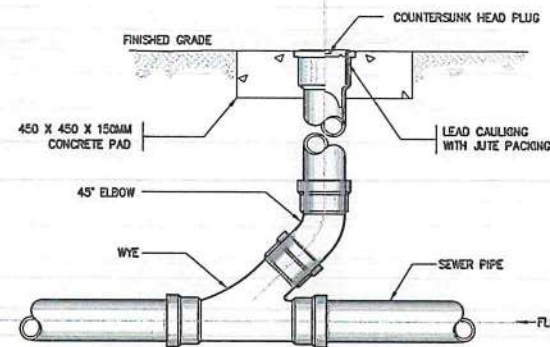
HOSE BIBB



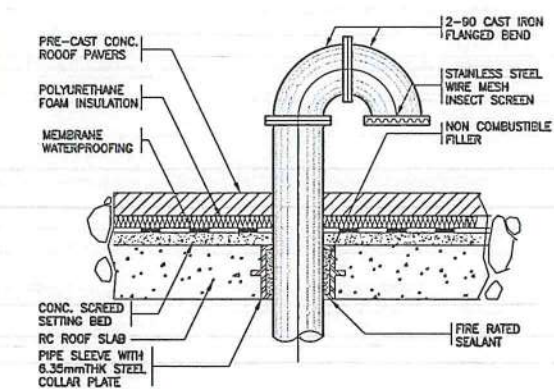
PIPE SUPPORT



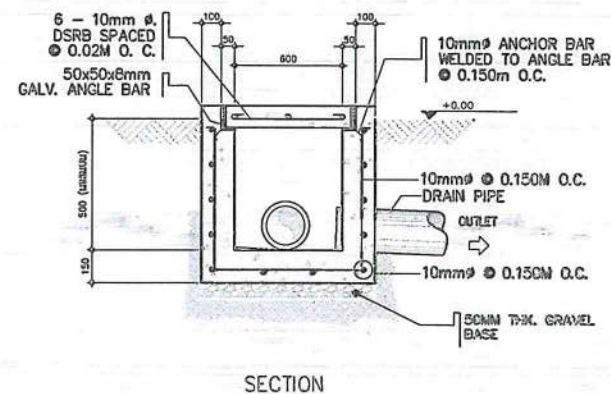
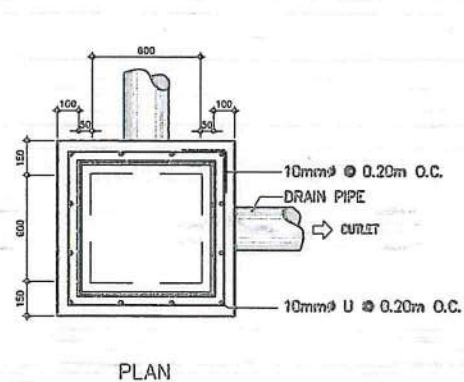
GROUND CLEANOUT



VENT STACK THRU ROOF



CATCH BASIN



1 MISCELLANEOUS DETAILS
P 06 SCALE: NTS



THIS DRAWING IS AN EXCLUSIVE PROPERTY OF CIVIL AVIATION AUTHORITY OF THE PHILIPPINES AND MUST NOT BE REPRODUCED, EXHIBITED, LOANED NOR COPIED IN PART OR IN WHOLE WITHOUT PROPER PERMISSION AND/OR WRITTEN CONSENT FROM THE CAAP DIRECTOR GENERAL.

AERODROME DEVELOPMENT AND MANAGEMENT SERVICE

INFRASTRUCTURE DEVELOPMENT AND DESIGN DIVISION

DESIGN STAFF: INITIAL / DATE

DESIGNED BY: IDDO

DRAWN BY:

CHECKED BY: CJDC

EJDR

REVIEWED BY:

RAUL R. CRUCENA
DIVISION CHIEF IN, IDDO-ADMS

SUBMITTED BY:

ARNEL F. BORLADO
DEPARTMENT MANAGER III, AED-ADMS

RECOMMENDED APPROVAL:

L.T. COL. VALENTINO A. DIONELA PAF (RET)
ASSISTANT DIRECTOR GENERAL II, ADMS

APPROVED:

CAPTAIN MANUEL ANTONIO L. TAMAYO
DIRECTOR GENERAL

NOTES / REVISIONS:

PROJECT TITLE:

IMPROVEMENT/EXPANSION OF PASSENGER TERMINAL BUILDING

LOCATION:

BASCO AIRPORT
BASCO, BATANES

SHEET CONTENTS:

DRAWING SCALE: SHEET NO.

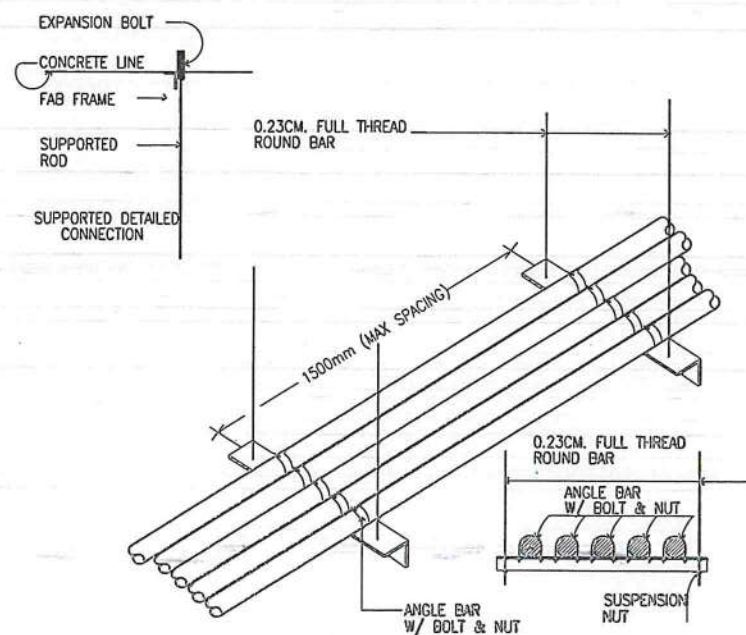
AS SHOWN P 06

GENERAL NOTES & SPECIFICATIONS:

- ALL ELECTRICAL WORKS AND INSTALLATIONS SHALL COMPLY WITH THE PROVISIONS OF THE LATEST EDITION OF THE PHILIPPINE ELECTRICAL CODE WITH THE RULES AND REGULATIONS OF THE NATIONAL AND LOCAL AUTHORITIES CONCERNED IN THE ENFORCEMENT OF ELECTRICAL LAWS AND REGULATIONS OF THE UTILITY COMPANIES CONCERNED.
- ALL ELECTRICAL WORKS HEREIN SHALL BE DONE UNDER THE DIRECT SUPERVISION OF A DULY LICENSED ELECTRICAL ENGINEER.
- GENERAL USED RECEPTACLE SHALL BE RATED 16 AMPERES, 2 POLE, 250 VOLTS, UNIVERSAL TYPE WITH GROUND WITH PARALLEL SLOTS, SPECIAL PURPOSE OUTLET SHALL BE OF THE TYPE AND RATING INSULATED FOR RATING SUITED FOR THE EQUIPMENT SERVED.
- ALL ELECTRICAL EQUIPMENT SHALL BE PROPERLY GROUNDED IN ACCORDANCE WITH THE REQUIREMENT OF THE PHILIPPINE ELECTRICAL CODE.
- ALL MATERIALS TO BE USED SHALL BE BRANDED AND SHALL BE NEW AND OF THE APPROVED TYPE FOR BOTH LOCATION AND PURPOSE INTENDED.
- ELECTRICAL PIPES, WIRES AND CABLES TO BE USED SHALL BE UNDERWRITERS LABORATORY (UL) LISTED.
- COLOR CODING OF WIRES AND CABLES SHALL BE AS FOLLOWS:

LINE	-	RED
NEUTRAL	-	BLACK
GROUND	-	GREEN
- EMERGENCY LAMPS SHALL BE CONNECTED TO THE NEAREST LIGHTING CIRCUIT AND PROVIDE SIMPLEX CONVENIENCE OUTLET.
- MANHOLES, HAND HOLES, JUNCTION BOXES, PULL BOXES, AND WIRE GUTTER GAUGE NO. 16 (MINIMUM) SHALL BE PROVIDED BY THE CONTRACTOR WHENEVER REQUIRED AND NECESSARY AND SHALL BE INSTALLED AT CONVENIENT SPACE AND LOCATION TO FACILITATE WIRE PULLING EVEN IF THESE ITEMS ARE NOT SHOWN IN THE PLAN.
- ROUTING OF FEEDERS AND BRANCH CIRCUITS SHALL BE DONE IN THE FIELD WITH THE APPROVAL OF THE SUPERVISING REPRESENTATIVE OF CAAP.
- PROVIDE SUFFICIENT MICA TUBE AND FLEXIBLE METAL CONDUIT FROM JUNCTION BOX TO TO LIGHTING FIXTURE.
- PANEL BOARD SHALL BE EQUIPPED WITH GROUND KIT TERMINALS WITH NUMBER OF TERMINALS EQUAL TO THE NUMBER OF BRANCH CIRCUITS.
- PRINTED INDEX LABEL SHALL BE AFFIXED TO INSIDE SURFACE OF EACH PANEL BOARD DOOR, CLEARLY INDICATING AREA AND TYPE OF LOAD SERVED BY EACH BRANCH CIRCUIT PROTECTIVE DEVICE, INCLUDING SPARES. HAND WRITTEN WILL NOT BE ACCEPTED. ENGRAVED LAMINATED PLASTIC IDENTIFICATION PLATES SHALL BE FURNISHED AND INSTALLED ON ALL PANELS, PANELS SHALL BE AFFIXED IN FRONT OF PANELS.
- LOAD DATA IS BASED ON INFORMATION GIVEN TO THE ENGINEER AT THE TIME OF DESIGN. VERIFY ALL EQUIPMENT NAMEPLATE RATING BEFORE ORDERING.
- ALL BRANCH CIRCUIT BREAKER SHALL BE BOLT-ON TYPE WITH 10 KAIC MINIMUM OR AS INDICATED IN THE LOAD SCHEDULE.
- FOR EACH SPARE BRANCH CIRCUIT IN PANELBOARD, PROVIDE ONE 20MMØ EMPTY CONDUIT CONNECTED TO AN OCTAGONAL BOX AT ABOVE CEILING.
- MOUNTING HEIGHT SHALL BE AS FOLLOWS:

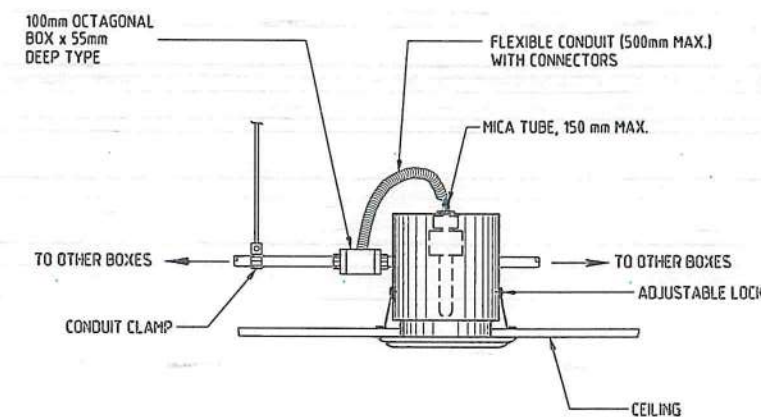
A. LIGHTING SWITCHES	1.40M FROM CENTER OF DEVICE TO FINISHED FLOOR LEVEL
B. CONVENIENCE OUTLETS	0.30M FROM CENTER OF DEVICE TO FINISHED FLOOR LEVEL
C. PANELBOARD	1.80M FROM TOP OF PANEL TO FINISHED FLOOR LEVEL
- SECURING OF NECESSARY ELECTRICAL PERMITS, CEI, AND OTHER NECESSARY REQUIREMENTS SHALL BE PART OF THE GENERAL CONTRACTOR INCLUDING COORDINATION/APPLICATION WITH THE UTILITY COMPANY FOR POWER INTERRUPTION.
- ALL WORKS SHALL BE EXECUTED IN A WORKMANSHIP MANNER AND SHALL PRESENT A NEAT AND ORDERLY ACCEPTANCE. ALL WIRING SHALL BE CONCEALED AS MUCH AS POSSIBLE.



CONDUIT ARRANGEMENT

LEGEND

- A 22 WATTS, 2275 LUMENS 220-240V 60HZ 201mm DIAMETER E27 LED FLAT LAMP, DAY LIGHT, MERCURY FREE, ENCLOSED IN POLYCARBONATE PLASTIC THAT IS IMPACT AND HEAT RESISTANT, WITH LIGHTING RECEPTACLE OUTLET; LETTER DENOTES CONTROL/SWITCH.
- 6 INCHES RECESSED TYPE VERTICAL LAMP DOWNLIGHT WITH FULL FROSTED GLASS COVER, POWDER COATED WHITE FINISH STEEL HOUSING AND MIRRORIZED ALUMINUM REFLECTOR WITH 1-12WATTS LED BULB; LETTER DENOTES CONTROL/SWITCH.
- DUAL OPTICS EMERGENCY LIGHT, 2x5WATTS LED BULB 100V-240V 1200LM 6500K, ADJUSTABLE LAMP HEADS, WITH 6V 3.0Ah SEALED ACID BATTERY, 258mm x 255mm x 68mm,
- ⋈ CEILING FAN
- 12 INCHES SQUARE CEILING MOUNTED EXHAUST FAN, 38 WATTS, 230 VOLTS
- ⊕ DUPLEX UNIVERSAL CONVENIENCE OUTLET WITH GROUND, 16A, 250V, WIDE SERIES, WITH DEVICE PLATE COVER
- ⊕ SIMPLEX UNIVERSAL CONVENIENCE OUTLET WITH GROUND, 16A, 250V, WIDE SERIES, WITH DEVICE PLATE COVER
- ⌋ ONE-GANG, ONE WAY SWITCH, 16A, 250V, WIDE SERIES, WITH DEVICE PLATE COVER; LETTER DENOTES LIGHTS BEING CONTROLLED
- ⌋ TWO-GANG, ONE WAY SWITCH, 16A, 250V, WIDE SERIES, WITH DEVICE PLATE COVER; LETTER DENOTES LIGHTS BEING CONTROLLED
- ⌋ THREE-GANG, ONE WAY SWITCH, 16A, 250V, WIDE SERIES, WITH DEVICE PLATE COVER; LETTER DENOTES LIGHTS BEING CONTROLLED
- ⊗ AIR COOLED CONDENSING UNIT (ACCU) CIRCUIT PROTECTION (SEE SCHEDULE OF LOADS FOR THE RATING)
- PANEL BOARD (SEE SCHEDULE OF LOADS FOR DETAILS)
- ⌋ CIRCUIT BREAKER (SEE SCHEDULE OF LOADS FOR THE RATING)
- LPP-01 CIRCUIT HOMERUN TO PANELBOARD



RECESSED DOWNLIGHT



THIS DRAWING IS AN EXCLUSIVE PROPERTY OF CIVIL AVIATION AUTHORITY OF THE PHILIPPINES AND MUST NOT BE REPRODUCED, EXHIBITED, LOANED NOR COPIED IN PART OR IN WHOLE WITHOUT PROPER PERMISSION AND/OR WRITTEN CONSENT FROM THE CAAP DIRECTOR GENERAL.

AERODROME DEVELOPMENT AND MANAGEMENT SERVICE

INFRASTRUCTURE DEVELOPMENT AND DESIGN DIVISION

DESIGN STAFF:	INITIAL / DATE
DESIGNED BY: IDDD	
DRAWN BY: IDDD	
CHECKED BY: CJDC	
REVIEWED BY: RUAR	

REVIEWED BY:

RAUL R. CRUCENA
 DIVISION CHIEF III, IDDD-ADMS

SUBMITTED BY:

ARNEL F. BORLADO
 DEPARTMENT MANAGER III, AED-ADMS

RECOMMENDED APPROVAL:

LT. COL. VALENTINO A. DIONELA PAF (RET)
 ASSISTANT DIRECTOR GENERAL II, ADMS

APPROVED:

CAPTAIN MANUEL ANTONIO L. TAMAYO
 DIRECTOR GENERAL

NOTES / REVISIONS:

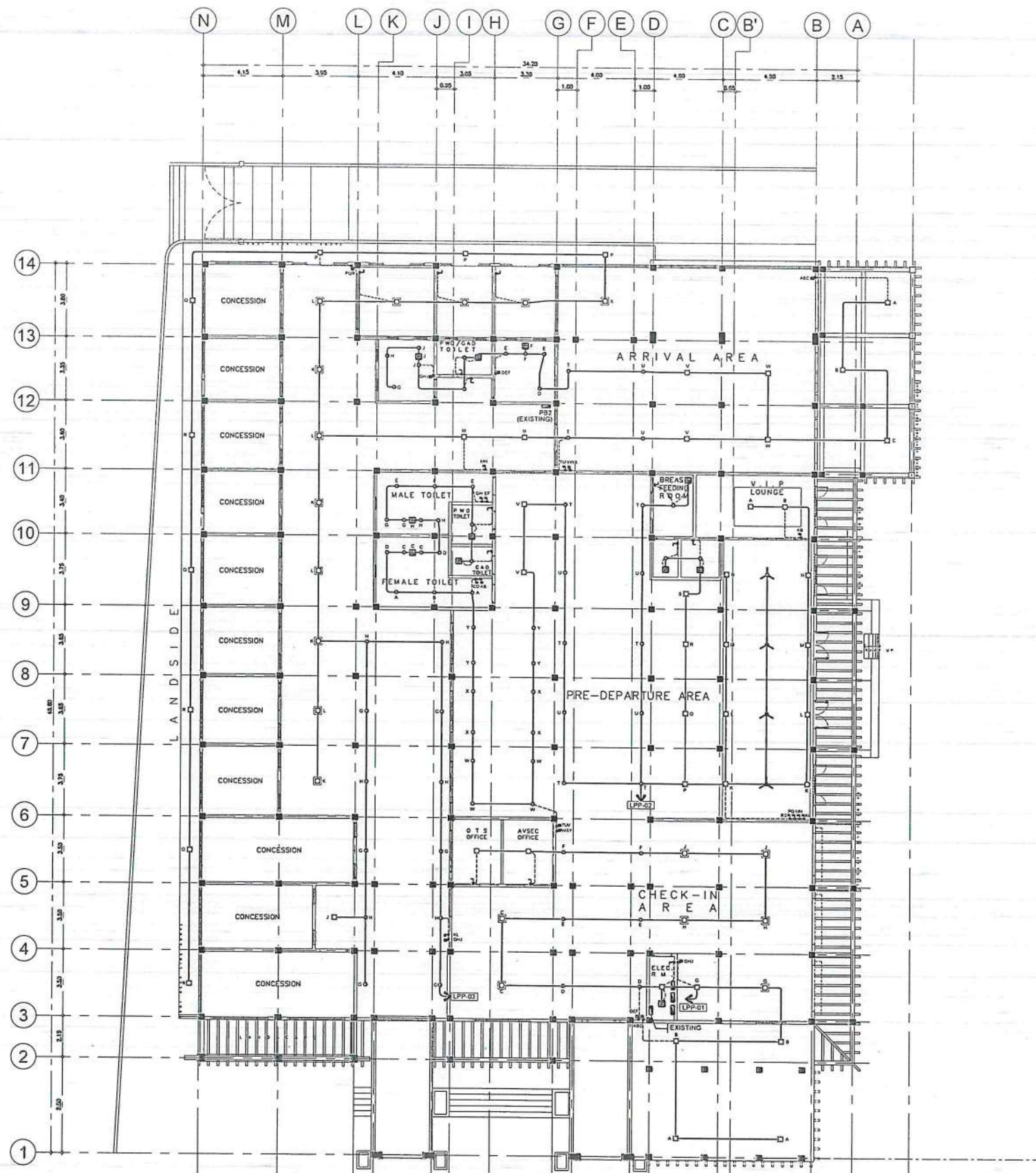
PROJECT TITLE:
IMPROVEMENT/EXPANSION OF PASSENGER TERMINAL BUILDING

LOCATION:
**BASCO AIRPORT
 BASCO, BATANES**

SHEET CONTENTS:

DRAWING SCALE: AS SHOWN

SHEET NO.: **E 001**



THIS DRAWING IS AN EXCLUSIVE PROPERTY OF CIVIL AVIATION AUTHORITY OF THE PHILIPPINES AND MUST NOT BE REPRODUCED, EXHIBITED, LOANED NOR COPIED IN PART OR IN WHOLE WITHOUT PROPER PERMISSION AND/OR WRITTEN CONSENT FROM THE CAAP DIRECTOR GENERAL.

AERODROME DEVELOPMENT AND MANAGEMENT SERVICE

INFRASTRUCTURE DEVELOPMENT AND DESIGN DIVISION

DESIGN STAFF:	INITIAL / DATE
DESIGNED BY:	IODD
DRAWN BY:	IODD
CHECKED BY:	CJDC
	RUAJR

REVIEWED BY:

RAUL R. CRUCENA
DIVISION CHIEF JIL, IODD-ADMS

SUBMITTED BY:

ARNEL F. BORLADO
DEPARTMENT MANAGER III, AED-ADMS

RECOMMENDED APPROVAL:

LT COL. VALENTINO A. DIONELA PAF (RET.)
ASSISTANT DIRECTOR GENERAL II, ADMS

APPROVED:

CAPTAIN MANUEL ANTONIO L. TAMAYO
DIRECTOR GENERAL

NOTES / REVISIONS:

PROJECT TITLE:

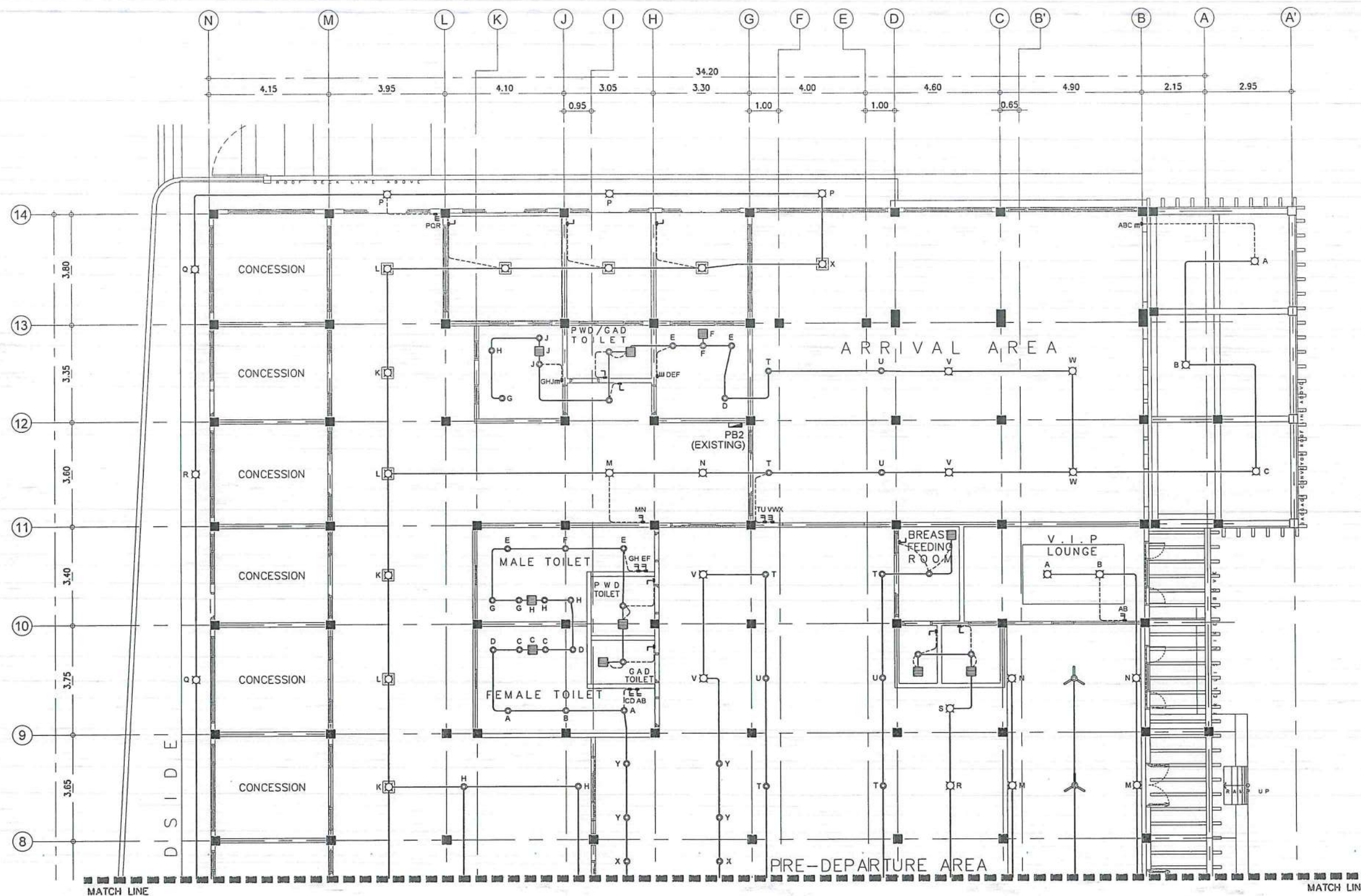
IMPROVEMENT/EXPANSION OF PASSENGER TERMINAL BUILDING

LOCATION:

BASCO AIRPORT
BASCO, BATANES

SHEET CONTENTS:

DRAWING SCALE:	SHEET NO.
AS SHOWN	E 002



1 LIGHTING LAYOUT
E 03 SCALE: 1:150M



CIVIL AVIATION AUTHORITY OF THE PHILIPPINES
DEPARTMENT OF TRANSPORTATION

THIS DRAWING IS AN EXCLUSIVE PROPERTY OF CIVIL AVIATION AUTHORITY OF THE PHILIPPINES AND MUST NOT BE REPRODUCED, EXHIBITED, LOANED NOR COPIED IN PART OR IN WHOLE WITHOUT PROPER PERMISSION AND/OR WRITTEN CONSENT FROM THE CAAP DIRECTOR GENERAL.

AERODROME DEVELOPMENT AND MANAGEMENT SERVICE

INFRASTRUCTURE DEVELOPMENT AND DESIGN DIVISION

DESIGN STAFF:	INITIAL / DATE
DESIGNED BY:	IDDD
DRAWN BY:	IDDD
CHECKED BY:	CJDC
	RUAJR

REVIEWED BY:

RAUL R. CRUCENA
DIVISION CHIEF-III, IDDD-ADMS

SUBMITTED BY:

ARNEL F. BORLADO
DEPARTMENT MANAGER III, AED-ADMS

RECOMMENDED APPROVAL:

L.T. COL. VALENTINO A. DIONELA PAF (RET.)
ASSISTANT DIRECTOR GENERAL II, ADMS

APPROVED:

CAPTAIN MANUEL ANTONIO L. TAMAYO
DIRECTOR GENERAL

NOTES / REVISIONS:

PROJECT TITLE:

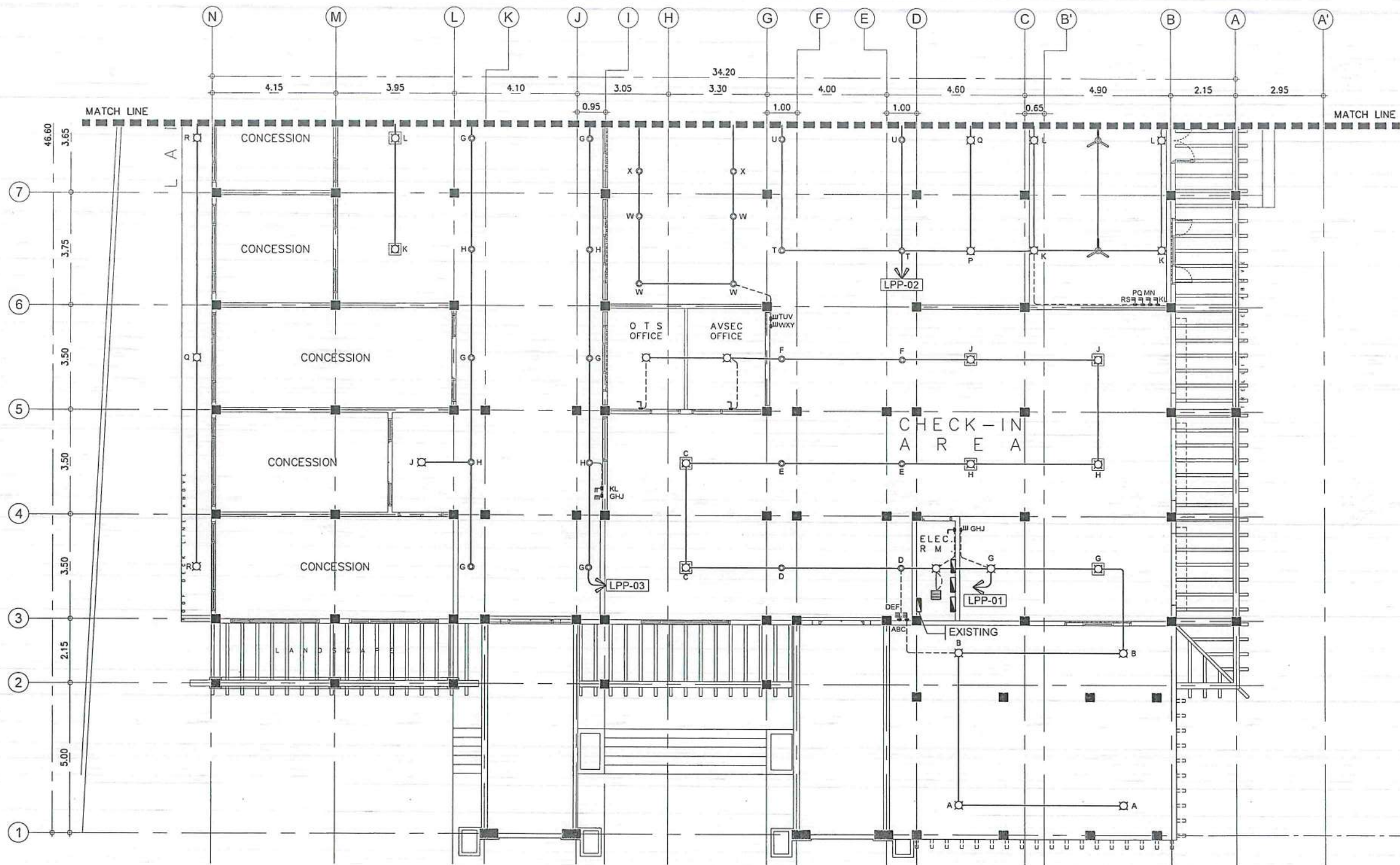
IMPROVEMENT/EXPANSION OF PASSENGER TERMINAL BUILDING

LOCATION:

BASCO AIRPORT
BASCO, BATANES

SHEET CONTENTS:

DRAWING SCALE:	SHEET NO:
AS SHOWN	E 003



1 LIGHTING LAYOUT
E 04 SCALE: 1:150M



THIS DRAWING IS AN EXCLUSIVE PROPERTY OF CIVIL AVIATION AUTHORITY OF THE PHILIPPINES AND MUST NOT BE REPRODUCED, EXHIBITED, LOANED NOR COPIED IN PART OR IN WHOLE WITHOUT PROPER PERMISSION AND/OR WRITTEN CONSENT FROM THE CAAP DIRECTOR GENERAL

AERODROME DEVELOPMENT AND MANAGEMENT SERVICE

INFRASTRUCTURE DEVELOPMENT AND DESIGN DIVISION

DESIGN STAFF:	INITIAL / DATE
DESIGNED BY: IDDD	
DRAWN BY: IDDD	
CHECKED BY: CJDC	
	RUAR

REVIEWED BY:
RAUL R. CRUCENA
Division Chief, IDDD-ADMS

SUBMITTED BY:
ARNEL F. BORLADO
Department Manager III, AED-ADMS

RECOMMENDED APPROVAL:
LT COL. VALENTINO A. DIONELA PAF (RET.)
Assistant Director General II, ADMS

APPROVED:
CAPTAIN MANUEL ANTONIO L. TAMAYO
Director General

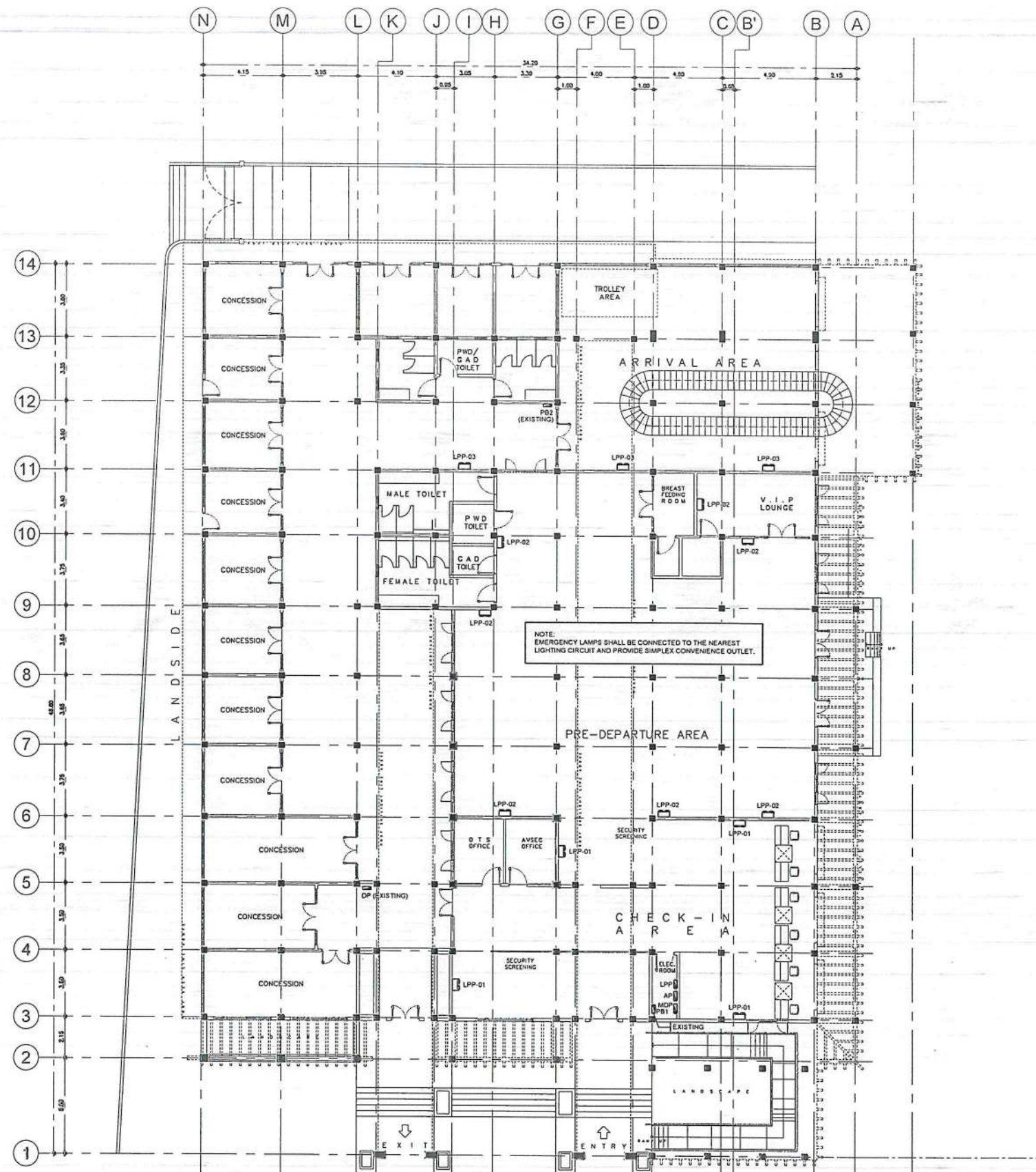
NOTES / REVISIONS:

PROJECT TITLE:
IMPROVEMENT/EXPANSION OF PASSENGER TERMINAL BUILDING

LOCATION:
BASCO AIRPORT
BASCO, BATANES

SHEET CONTENTS:

DRAWING SCALE:	SHEET NO:
AS SHOWN	E 004



1 EMERGENCY LIGHTING LAYOUT
 SCALE: 1:275M



THIS DRAWING IS AN EXCLUSIVE PROPERTY OF CIVIL AVIATION AUTHORITY OF THE PHILIPPINES AND MUST NOT BE REPRODUCED, EXHIBITED, LOANED NOR COPIED IN PART OR IN WHOLE WITHOUT PROPER PERMISSION AND/OR WRITTEN CONSENT FROM THE CAAP DIRECTOR GENERAL

AERODROME DEVELOPMENT AND MANAGEMENT SERVICE

INFRASTRUCTURE DEVELOPMENT AND DESIGN DIVISION

DESIGN STAFF:	INITIAL / DATE
DESIGNED BY: IDDD	
DRAWN BY: IDDD	
CHECKED BY: CJDC	
	RUAJR

REVIEWED BY:

RAUL R. CRUCENA
 DIVISION CHIEF-III, IDDD-ADMS

SUBMITTED BY:

ARNEL F. BORLADO
 DEPARTMENT MANAGER III, AED-ADMS

RECOMMENDED APPROVAL:

LT COL VALENTINO A. DIONELA PAF (RET)
 ASSISTANT DIRECTOR GENERAL II, ADMS

APPROVED:

CAPTAIN MANUEL ANTONIO L. TAMAYO
 DIRECTOR GENERAL

NOTES / REVISIONS:

PROJECT TITLE:

IMPROVEMENT/EXPANSION OF PASSENGER TERMINAL BUILDING

LOCATION:

BASCO AIRPORT
 BASCO, BATANES

SHEET CONTENTS:

--

DRAWING SCALE: SHEET NO:

AS SHOWN E 005



CIVIL AVIATION AUTHORITY OF THE PHILIPPINES
DEPARTMENT OF TRANSPORTATION

THIS DRAWING IS AN EXCLUSIVE PROPERTY OF CIVIL AVIATION AUTHORITY OF THE PHILIPPINES AND MUST NOT BE REPRODUCED, EXHIBITED, LOANED NOR COPIED IN PART OR IN WHOLE WITHOUT PROPER PERMISSION AND/OR WRITTEN CONSENT FROM THE CAAP DIRECTOR GENERAL.

AERODROME DEVELOPMENT AND MANAGEMENT SERVICE

INFRASTRUCTURE DEVELOPMENT AND DESIGN DIVISION

DESIGN STAFF:	INITIAL / DATE
DESIGNED BY:	IDDD
DRAWN BY:	IDDD
CHECKED BY:	CJDC
	RUAJR

REVIEWED BY:

Raul R. Crucena
RAUL R. CRUCENA
DIVISION CHIEF III, IDDD-ADMS

SUBMITTED BY:

Arnel P. Borlado
ARNEL P. BORLADO
DEPARTMENT MANAGER III, AED-ADMS

RECOMMENDED APPROVAL:

LT Col. Valentino A. Dionela PAF (RET)
LT COL. VALENTINO A. DIONELA PAF (RET)
ASSISTANT DIRECTOR GENERAL II, ADMS

APPROVED:

Captain Manuel Antonio L. Tamayo
CAPTAIN MANUEL ANTONIO L. TAMAYO
DIRECTOR GENERAL

NOTES / REVISIONS:

PROJECT TITLE:

IMPROVEMENT/EXPANSION OF PASSENGER TERMINAL BUILDING

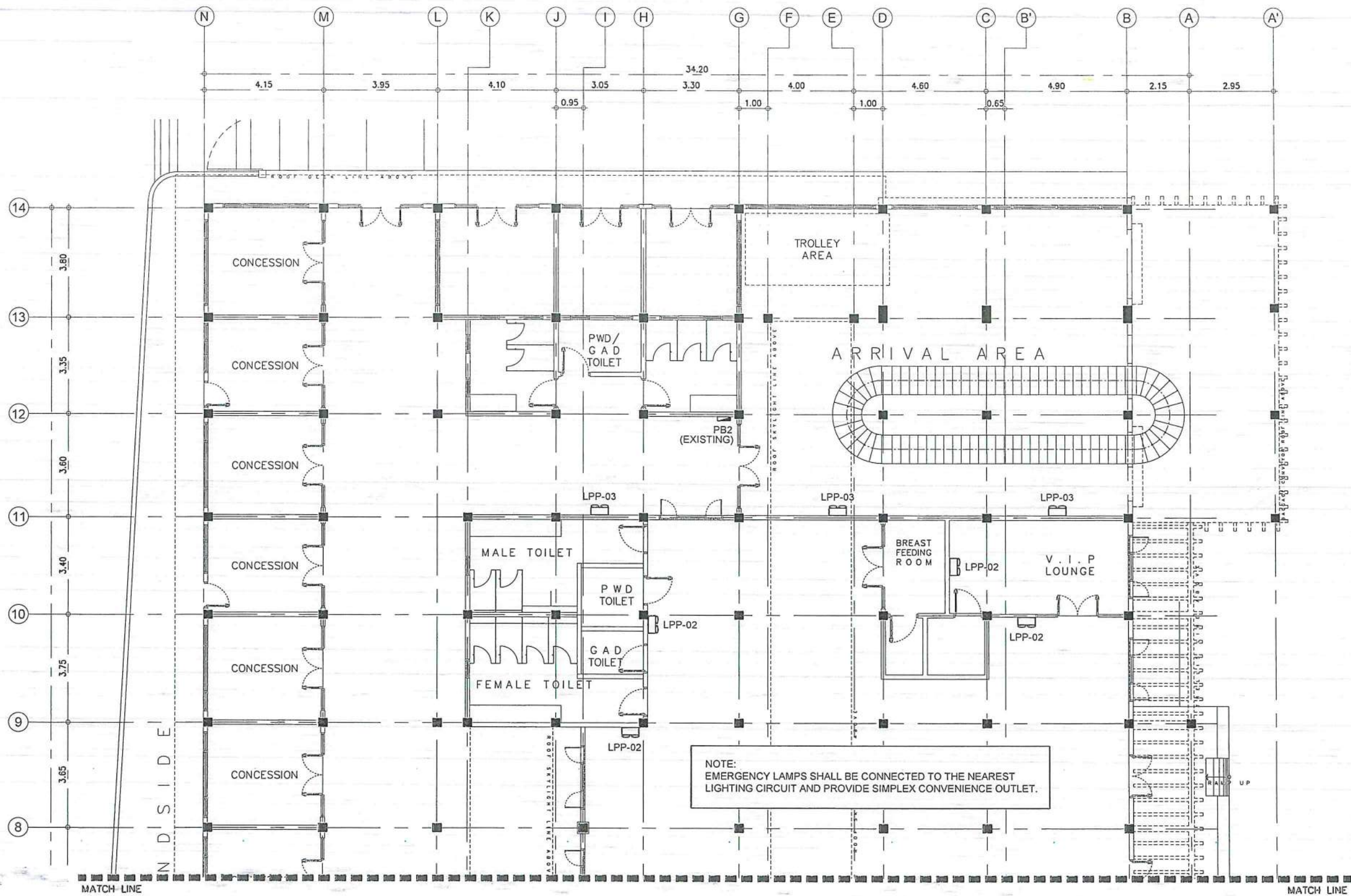
LOCATION:

BASCO AIRPORT
BASCO, BATANES

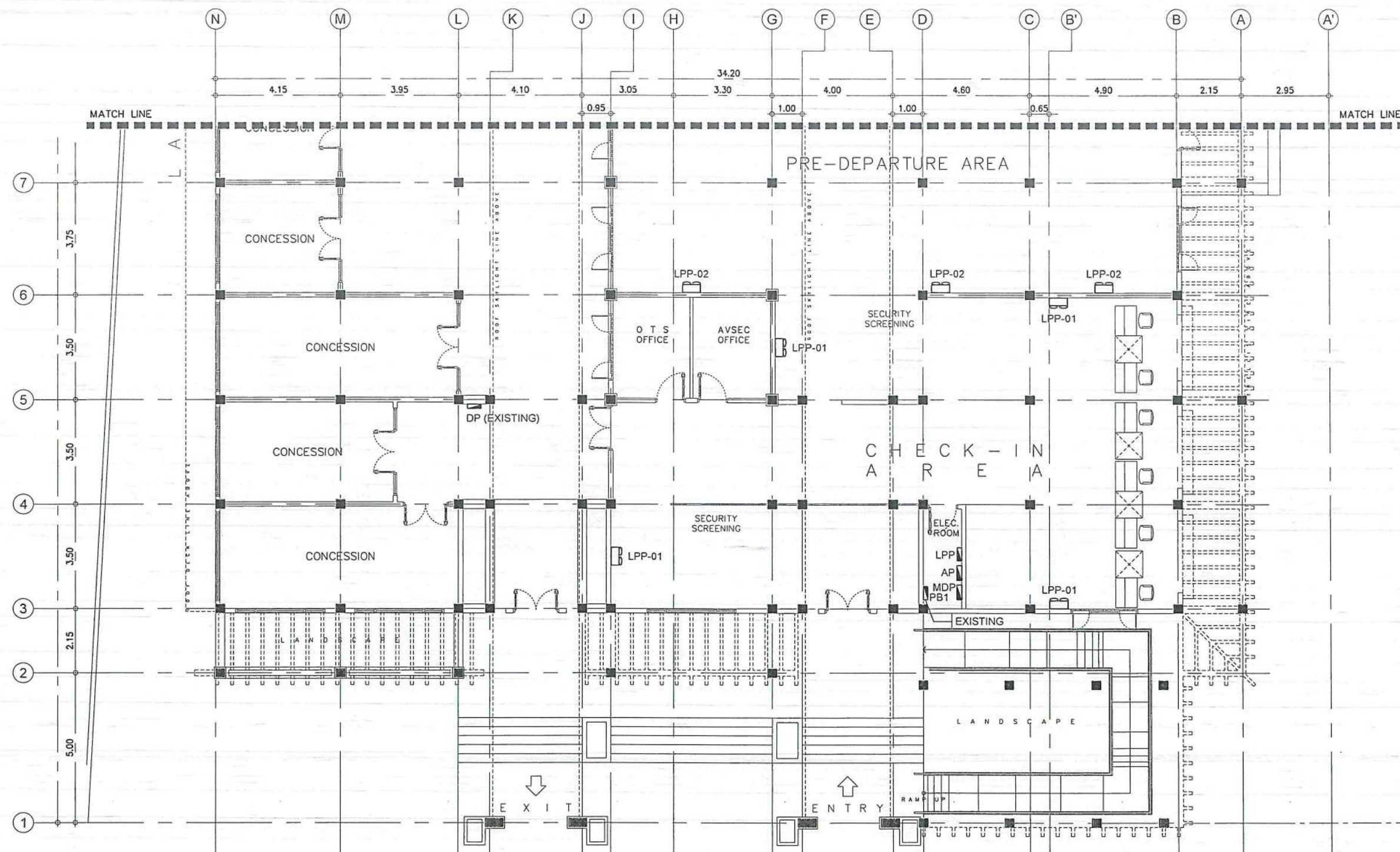
SHEET CONTENTS:

DRAWING SCALE: SHEET NO:

AS SHOWN E 006



1 EMERGENCY LIGHTING LAYOUT
E 06 SCALE: 1:150M



1 EMERGENCY LIGHTING LAYOUT
 E 07 SCALE: 1:150M



THIS DRAWING IS AN EXCLUSIVE PROPERTY OF CIVIL AVIATION AUTHORITY OF THE PHILIPPINES AND MUST NOT BE REPRODUCED, EXHIBITED, LOANED NOR COPIED IN PART OR IN WHOLE WITHOUT PROPER PERMISSION AND/OR WRITTEN CONSENT FROM THE CAAP DIRECTOR GENERAL.

AERODROME DEVELOPMENT AND MANAGEMENT SERVICE

INFRASTRUCTURE DEVELOPMENT AND DESIGN DIVISION

DESIGN STAFF:	INITIAL / DATE
DESIGNED BY:	IDDD
DRAWN BY:	IDDD
CHECKED BY:	CJDC
	RUAJR

REVIEWED BY:

 RAUL R. CRUCENA
 DIVISION CHIEF III, IDDD-ADMS

SUBMITTED BY:

 ARNEL F. BORLADO
 DEPARTMENT MANAGER III, AEO-ADMS

RECOMMENDED APPROVAL:

 LT COL VALENTINO A. DIONELA PAF (RET)
 ASSISTANT DIRECTOR GENERAL II, ADMS

APPROVED:

 CAPTAIN MANUEL ANTONIO L. TAMAYO
 DIRECTOR GENERAL

NOTES / REVISIONS:

PROJECT TITLE:
 IMPROVEMENT/EXPANSION OF PASSENGER TERMINAL BUILDING

LOCATION:
 BASCO AIRPORT
 BASCO, BATANES

SHEET CONTENTS:

DRAWING SCALE:	SHEET NO:
AS SHOWN	E 007

