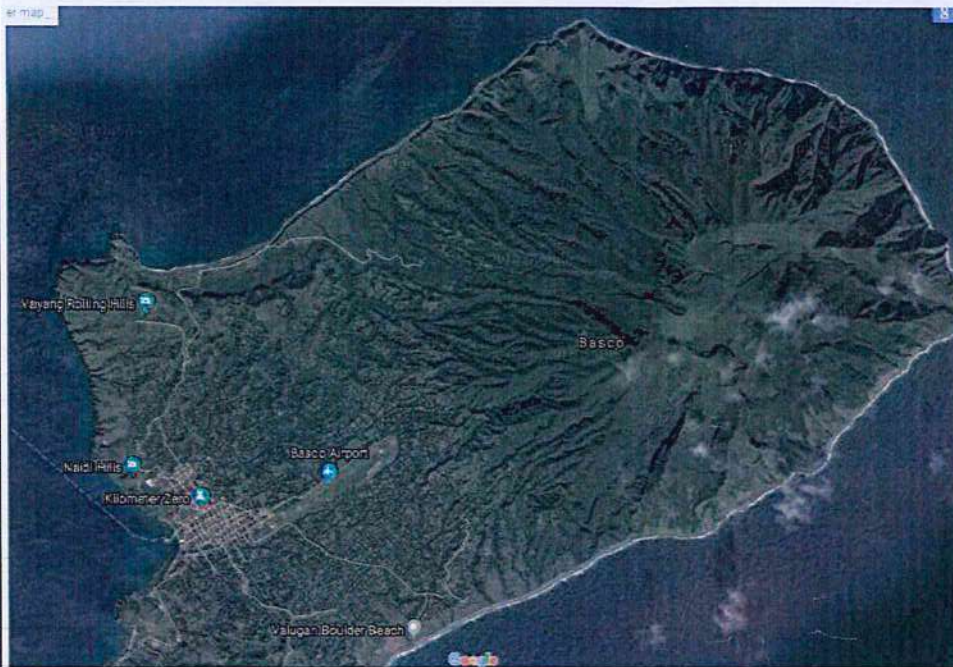
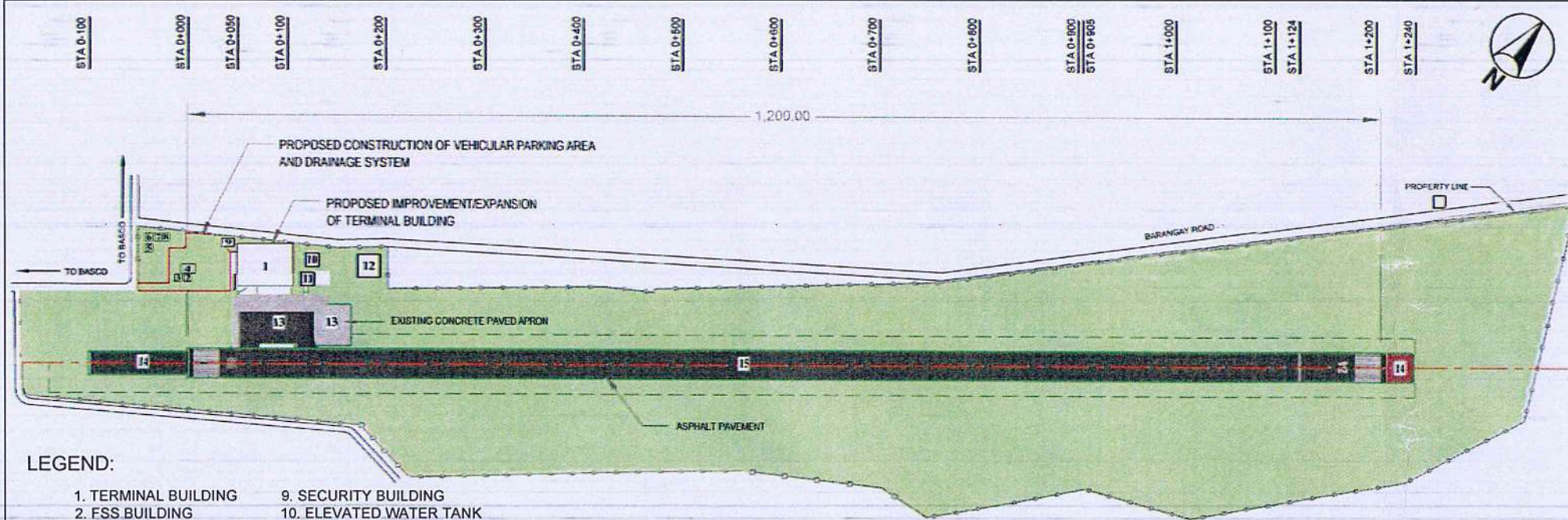




1
A-01 A-01
REHABILITATION OF POWER HOUSE
EXTERIOR PERSPECTIVE
SCALE: NTS.



2
A-01 A-01
REHABILITATION OF POWER HOUSE
VICINITY MAP
SCALE: NTS.



- LEGEND:
- 1. TERMINAL BUILDING
 - 2. FSS BUILDING
 - 3. ADMIN BUILDING
 - 4. FSS BUILDING PHASE 2
 - 5. NEW POWER HOUSE
 - 6. OLD POWER HOUSE
 - 7. GUEST HOUSE
 - 8. WAREHOUSE
 - 9. SECURITY BUILDING
 - 10. ELEVATED WATER TANK
 - 11. FIRE STATION BUILDING
 - 12. PROPOSED GUEST HOUSE 2
 - 13. CONCRETE PAVE APRON
 - 14. STOPWAY END
 - 15. EXISTING RUNWAY (ASPHALT)

3
A-01 A-01
REHABILITATION OF POWER HOUSE
AIRPORT PROFILE/ LOCATION MAP
SCALE: NTS.

TABLE OF CONTENTS

ARCHITECTURAL	
A-01	• EXTERIOR PERSPECTIVE • VICINITY MAP • AIRPORT PROFILE/ LOCATION MAP
A-02	• SITE DEVELOPMENT PLAN
A-03	• GROUND FLOOR (DEMOLITION/ EXISTING PLAN) • GROUND FLOOR (PROPOSED PLAN)
A-04	• DETAILED FRONT ELEVATION • DETAILED REAR ELEVATION • DETAILED RIGHT-SIDE ELEVATION • DETAILED LEFT-SIDE ELEVATION
A-05	• ROOF PLAN • FLOOR TILE LAYOUT PLAN • LONGITUDINAL SECTION • CROSS SECTION
STRUCTURAL	
S-01	• BLOW-UP DETAILS OF CABLE TRENCH • DETAILED SECTIONS OF ENGINE BED • DETAILED PLAN OF ENGINE BED (EXPANSION)
S-02	• DETAILED SECTION OF POWER CABLE MANHOLES • DETAILED SECTION OF POWER CABLE COVER
ELECTRICAL	
E-01	• GENERAL NOTES AND SPECIFICATIONS • SINGLE LINE DIAGRAM

REPUBLIC OF THE PHILIPPINES
DEPARTMENT OF PUBLIC WORKS AND HIGHWAY
OFFICE OF THE BUILDING OFFICIALS



REPUBLIC OF THE PHILIPPINES
CIVIL AVIATION AUTHORITY OF THE PHILIPPINES
AERODROME DEVELOPMENT AND MANAGEMENT SERVICE
NAIA ROAD, 1300 PASAY CITY

THIS DRAWINGS AND DESIGN IS EXCLUSIVE PROPERTIES OF CIVIL AVIATION AUTHORITY OF THE PHILIPPINES AND SUCH MUST NOT BE REPRODUCED, EXHIBITED, LOANED NOR COPIED IN PART OR IN WHOLE WITHOUT PROPER PERMISSION AND/OR WRITTEN CONSENT FROM THE DIRECTOR GENERAL CAAP.

AERODROME DEVELOPMENT AND MANAGEMENT SERVICE

INFRASTRUCTURE DEVELOPMENT AND DESIGN DIVISION

DISTRICT / CITY / MUNICIPALITY

LAND USE AND ZONING

LINE AND GRADE

DESIGN STAFF:	INITIAL / DATE
DESIGNED BY: IDDD	
DRAWN BY: RCJ	
CHECKED BY: SJD	

ARCHITECTURAL

REVIEWED BY:
RAUL R. ORCENA
Division Chief III, IDDD-ADMS

CIVIL / STRUCTURAL

SUBMITTED BY:
ARNEL F. BORLADO
Department Manager III, AED-ADMS

ELECTRICAL

RECOMMENDED APPROVAL:
LT COL VALENTINO A. DIONELA PAF (RET)
ADG II, ADMS

MECHANICAL

APPROVED:
CAPTAIN MANUEL ANTONIO L. TAMAYO
Director General

SANITARY / PLUMBING

ELECTRONICS

GEODETIC ENGINEERS

PROJECT:
REHABILITATION OF POWERHOUSE AND SUPPLY, DELIVERY AND INSTALLATION OF GENERATOR SET AT BASCO AIRPORT

LOCATION:
BASCO AIRPORT
BARANGAY IHUVOK II,
BASCO, BATANES

SHEET CONTENTS:
• EXTERIOR PERSPECTIVE
• VICINITY MAP
• SITE DEVELOPMENT PLAN

DRAWING SCALE:	SHEET NO:
AS SHOWN	A - 01
	01 05



REPUBLIC OF THE PHILIPPINES
CIVIL AVIATION AUTHORITY OF THE PHILIPPINES
AERODROME DEVELOPMENT AND MANAGEMENT SERVICE
NAIA ROAD, 1500 PASAY CITY

THIS DRAWINGS AND DESIGN IS EXCLUSIVE
PROPERTIES OF CIVIL AVIATION AUTHORITY
OF THE PHILIPPINES AND SUCH MUST NOT BE
REPRODUCED, EXHIBITED, LOANED NOR
COPIED IN PART OR IN WHOLE WITHOUT
PROPER PERMISSION AND/OR WRITTEN
CONSENT FROM THE DIRECTOR GENERAL
CAAP.

AERODROME DEVELOPMENT
AND MANAGEMENT SERVICE

INFRASTRUCTURE DEVELOPMENT
AND DESIGN DIVISION

DESIGN STAFF:	INITIAL / DATE
DESIGNED BY:	IDDD
DRAWN BY:	RCJ
CHECKED BY:	SJD

REVIEWED BY:

RAUL R. ORUCENA
Division Chief III, IDDD-ADMS

SUBMITTED BY:

ARNEL F. BORLADO
Department Manager III, AED-ADMS

RECOMMENDED APPROVAL:

LT COL VALENTINO A. DIONELA PAF (RET)
ADG II, ADMS

APPROVED:

CAPTAIN SAMUEL ANTONIO L. TAMAYO
Director General

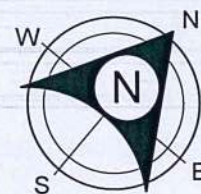
NOTES/REVISIONS:

PROJECT:
REHABILITATION OF
POWERHOUSE AND SUPPLY,
DELIVERY AND INSTALLATION
OF GENERATOR SET AT
BASCO AIRPORT

LOCATION:
BASCO AIRPORT
BARANGAY IHUVOK II,
BASCO, BATANES

SHEET CONTENTS:
• SITE DEVELOPMENT PLAN

DRAWING SCALE:	SHEET NO:
AS SHOWN	A - 02
	02 05



POWER
MANHOLE 1

OLD
POWER
HOUSE

GUEST
HOUSE

GUEST
HOUSE

EXISTING
COVERED
POWER
MANHOLE

NEW
POWER
HOUSE

EXISTING
COVERED
POWER
MANHOLE

SITE LOCATION
POWERHOUSE TO BE REHABILITATE

PARKING AREA

SECURITY
BLDG.

ADMIN BLDG.

OLD
FSS
BLDG.

FSS
BLDG.

PARKING AREA

PLANT BOX

PARKING AREA

PARKING AREA

PLANT BOX

BAGGAGE
CARTS

RAMP
GATE

PASSENGER TERMINAL
BUILDING

RAMP AREA

PARKING AREA

REHABILITATION OF POWER HOUSE
SITE DEVELOPMENT PLAN

1
A-02A-02

SCALE:

NTS.

THIS DRAWINGS AND DESIGN IS EXCLUSIVE PROPERTIES OF CIVIL AVIATION AUTHORITY OF THE PHILIPPINES AND SUCH MUST NOT BE REPRODUCED, EXHIBITED, LOANED NOR COPIED IN PART OR IN WHOLE WITHOUT PROPER PERMISSION AND/OR WRITTEN CONSENT FROM THE DIRECTOR GENERAL CAAP.

AERODROME DEVELOPMENT AND MANAGEMENT SERVICE

INFRASTRUCTURE DEVELOPMENT AND DESIGN DIVISION

DESIGN STAFF:	INITIAL / DATE
DESIGNED BY: IDDD	
DRAWN BY: RCJ	
CHECKED BY: SJD	

REVIEWED BY:

RAUL R. CRUCENA
Division Chief III, IDDD-ADMS

SUBMITTED BY:
ARNEL F. BORLADO
Department Manager III, AED-ADMS

RECOMMENDED APPROVAL:
LT COL VALENTINO A. DIONELA PAF (RET)
ADG II, ADMS

APPROVED:
CAPTAIN MANUEL ANTONIO L. TAMAYO
Director General

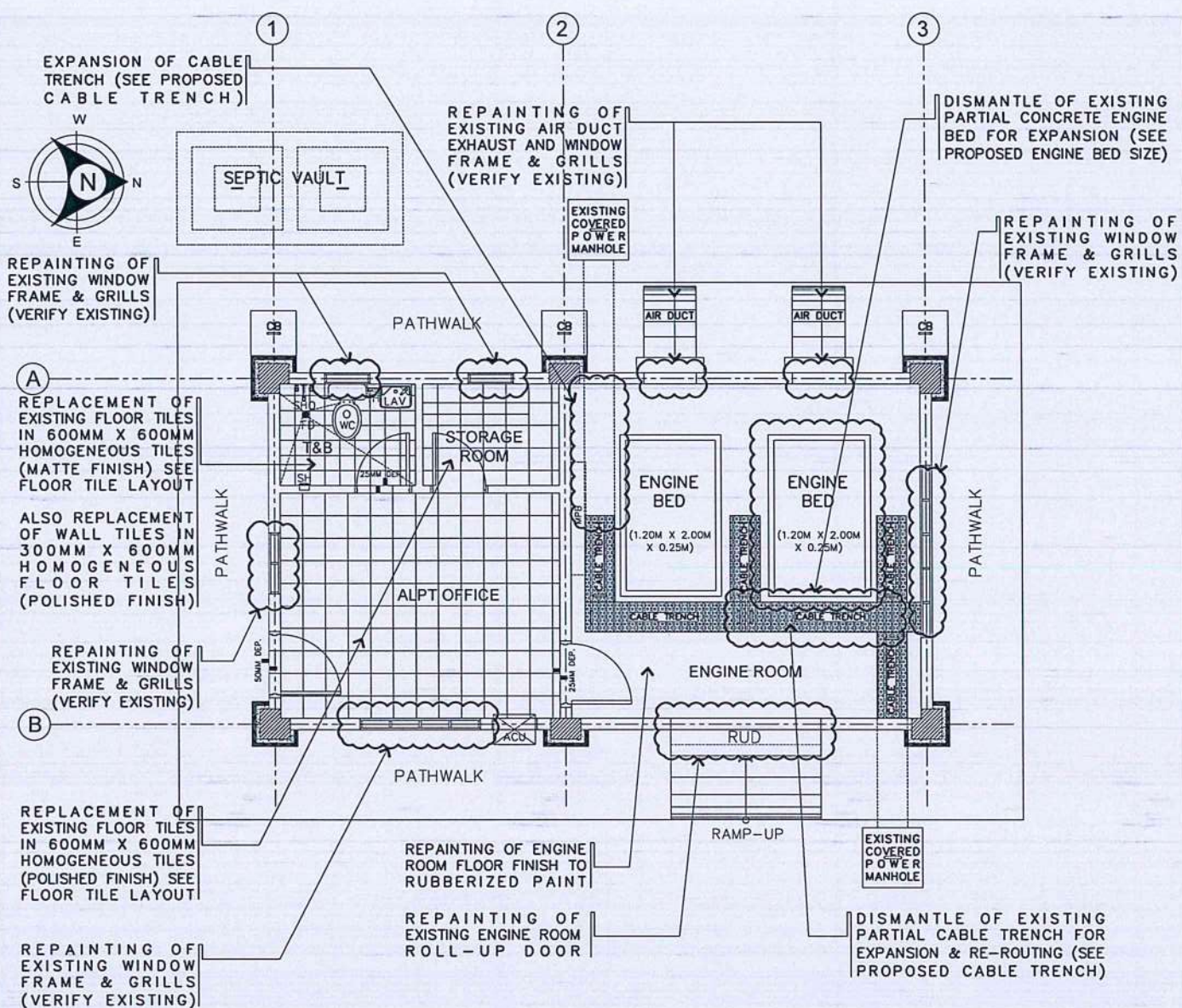
NOTES/REVISIONS:

PROJECT:
REHABILITATION OF POWERHOUSE AND SUPPLY, DELIVERY AND INSTALLATION OF GENERATOR SET AT BASCO AIRPORT

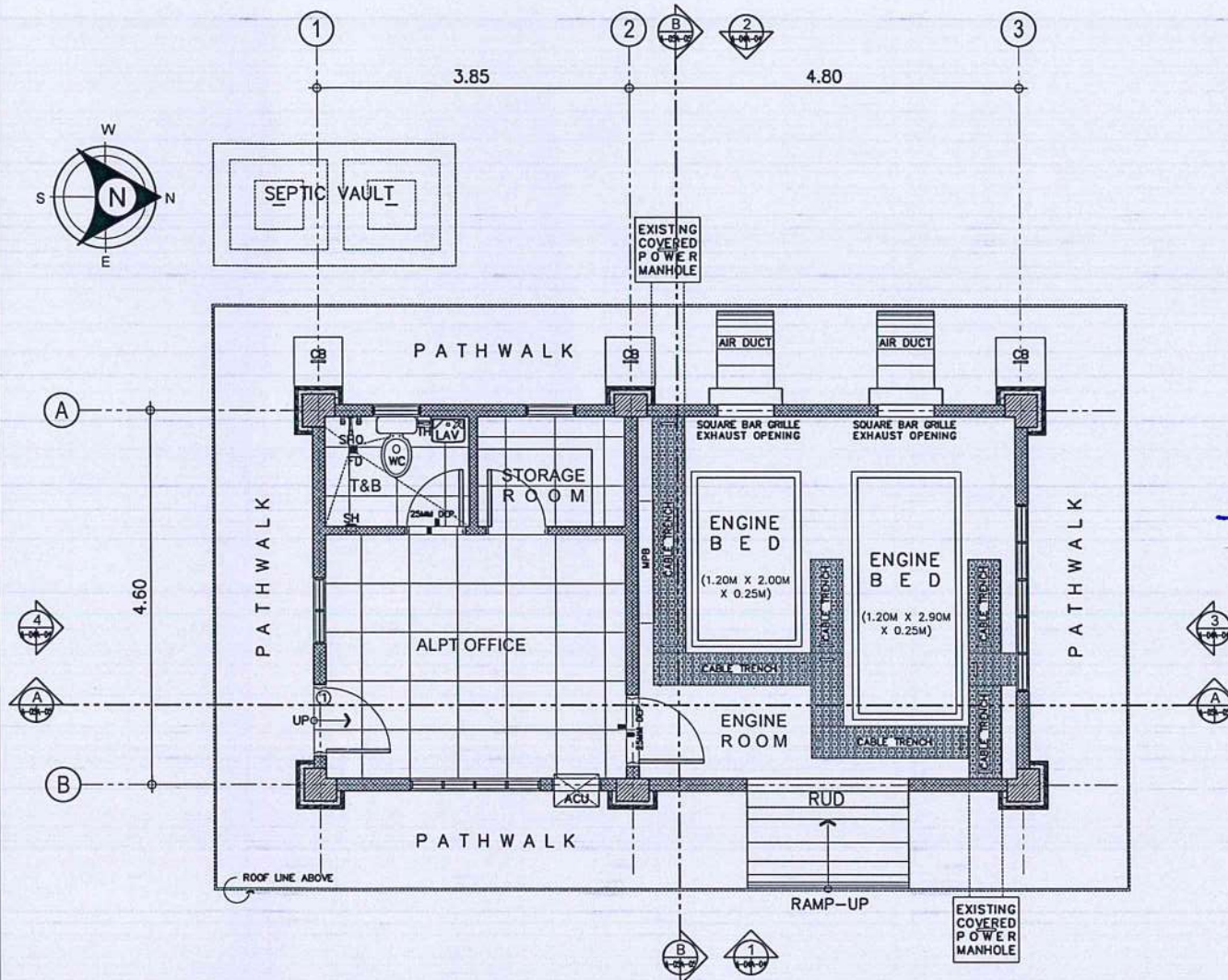
LOCATION:
BASCO AIRPORT
BARANGAY IHUVOK II,
BASCO, BATANES

SHEET CONTENTS:
• GROUND FLOOR (DEMOLITION/ EXISTING PLAN)
• GROUND FLOOR (PROPOSED PLAN)

DRAWING SCALE:	SHEET NO:
AS SHOWN	A - 03
	03 05



1
A-03/A-03
REHABILITATION OF POWER HOUSE
GROUND FLOOR (DEMOLITION/ EXISTING PLAN)
SCALE: 1:50 MTS.




2
A-03/A-03
REHABILITATION OF POWER HOUSE
GROUND FLOOR (PROPOSED PLAN)
SCALE: 1:50 MTS.

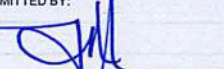
THIS DRAWINGS AND DESIGN IS EXCLUSIVE PROPERTIES OF CIVIL AVIATION AUTHORITY OF THE PHILIPPINES AND SUCH MUST NOT BE REPRODUCED, EXHIBITED, LOANED NOR COPIED IN PART OR IN WHOLE WITHOUT PROPER PERMISSION AND/OR WRITTEN CONSENT FROM THE DIRECTOR GENERAL CAAP.

AERODROME DEVELOPMENT AND MANAGEMENT SERVICE

INFRASTRUCTURE DEVELOPMENT AND DESIGN DIVISION


DESIGN STAFF:	INITIAL / DATE
DESIGNED BY: IDDD	
DRAWN BY: RCJ	
CHECKED BY: SJO	

REVIEWED BY:

RAUL R. GRUCENA
Division Chief III, DDD-ADMS

SUBMITTED BY:

ARNEL F. BORLADO
Department Manager III, AED-ADMS

RECOMMENDED APPROVAL:

LT COL VALENTINO A. DIONELA PAF (RET)
ADG II, ADMS

APPROVED:

CAPTAIN MANUEL ANTONIO L. TAMAYO
Director General

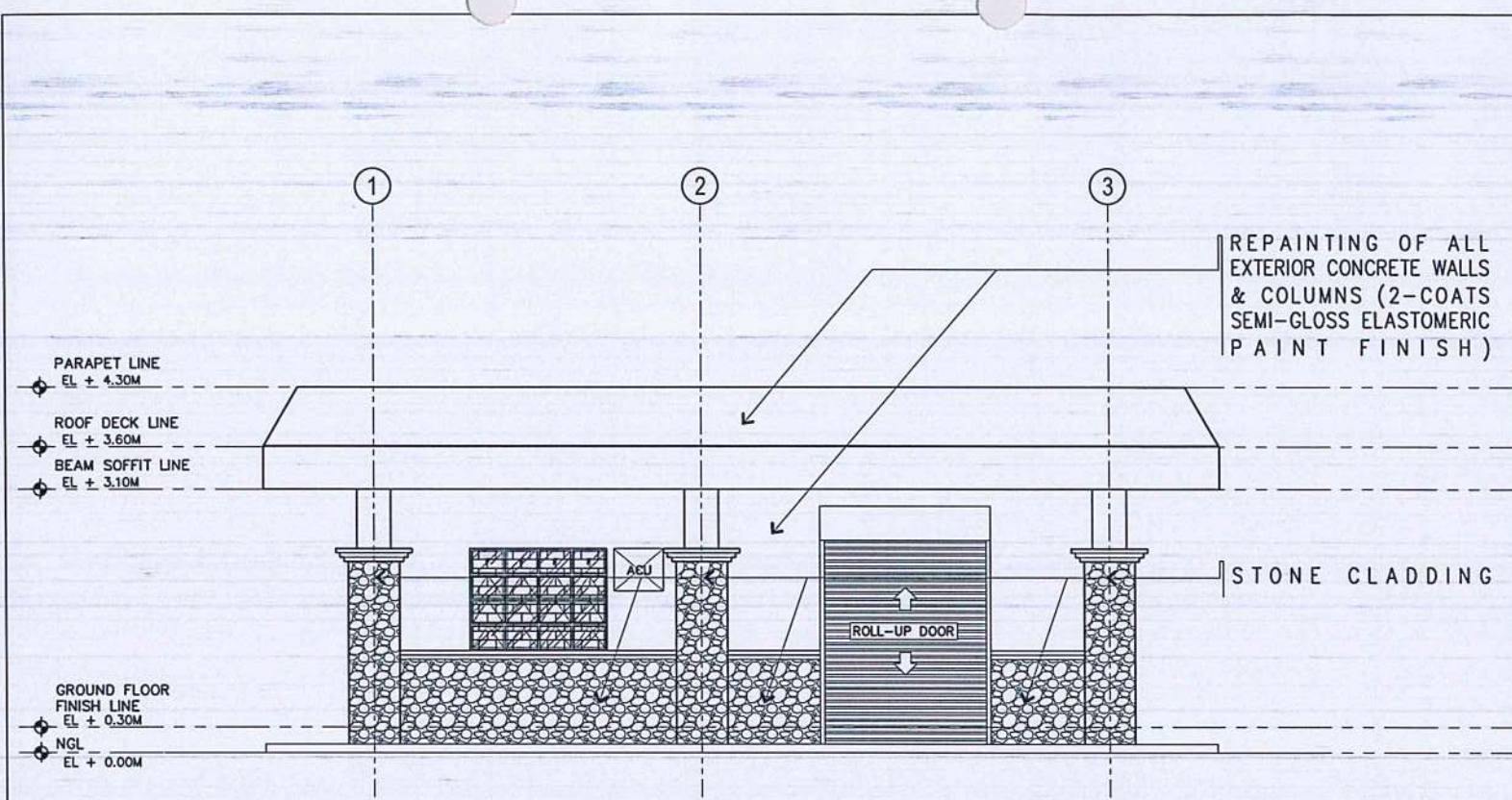
NOTES/REVISIONS:

PROJECT:
REHABILITATION OF POWERHOUSE AND SUPPLY, DELIVERY AND INSTALLATION OF GENERATOR SET AT BASCO AIRPORT

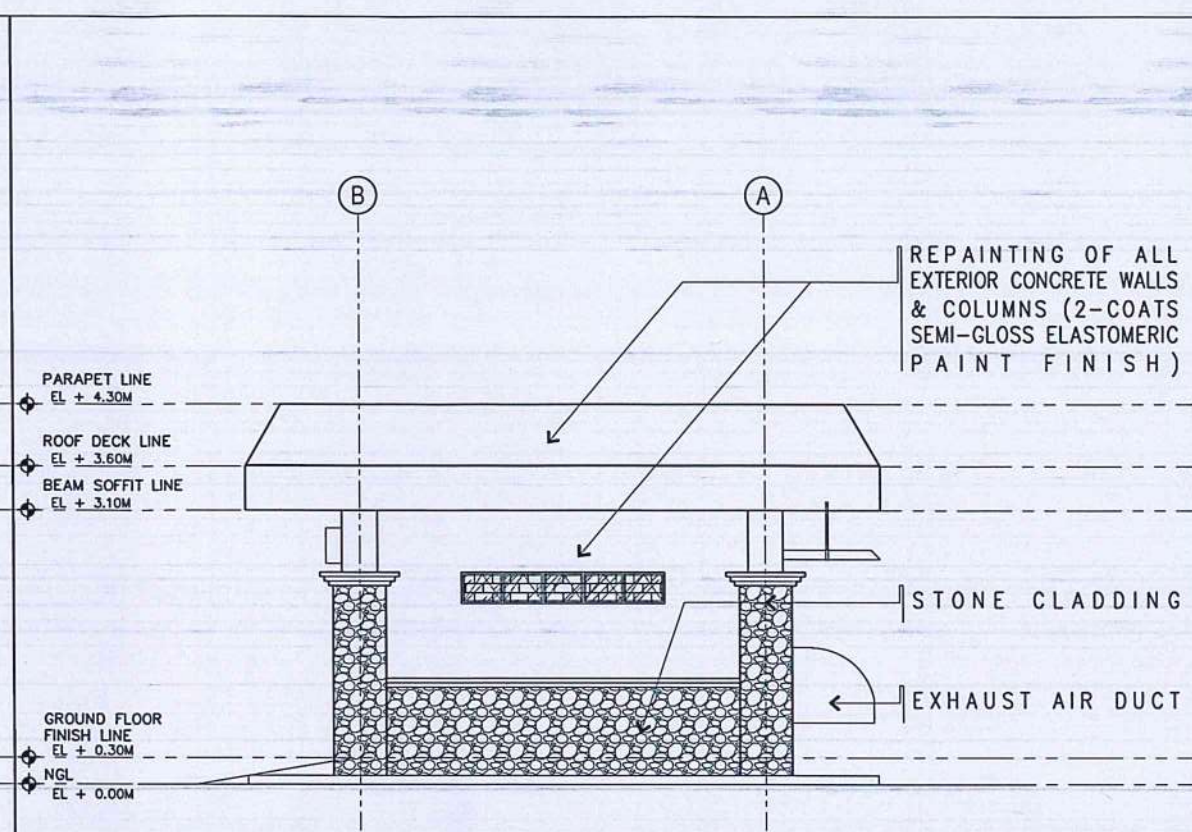
LOCATION:
BASCO AIRPORT
BARANGAY IHUVOK II,
BASCO, BATANES

SHEET CONTENTS:
<ul style="list-style-type: none"> DETAILED FRONT ELEVATION DETAILED REAR ELEVATION DETAILED RIGHT-SIDE ELEVATION DETAILED LEFT-SIDE ELEVATION

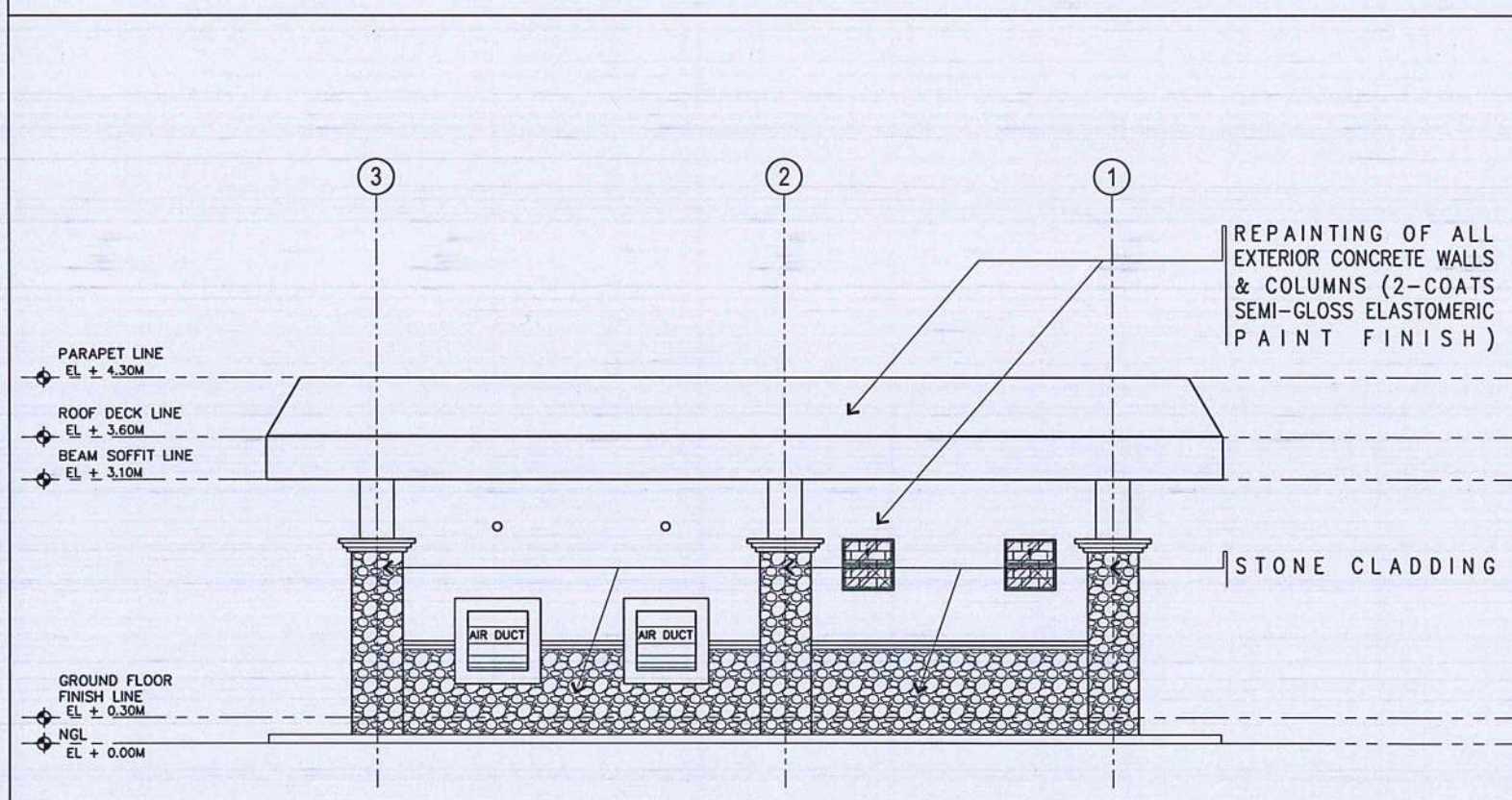
DRAWING SCALE:	SHEET NO:
AS SHOWN	A - 04
	04 05



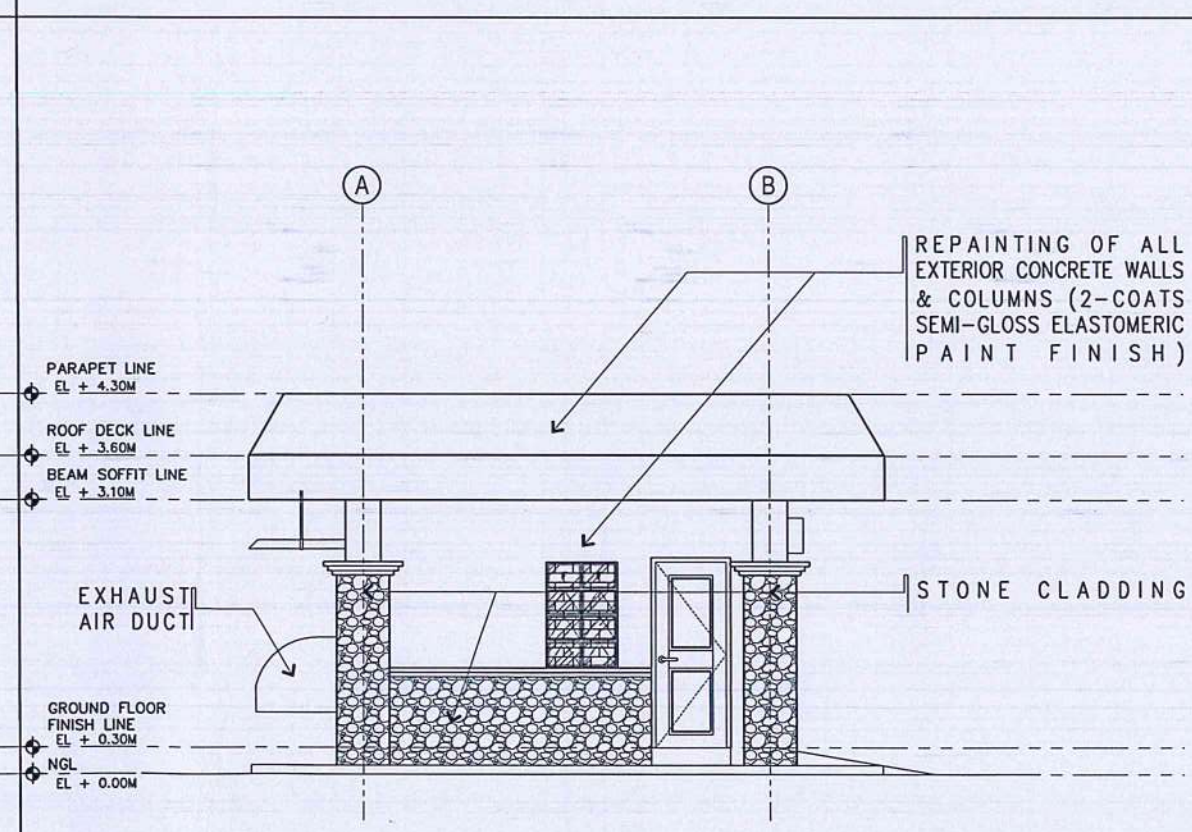
1
A-04A-04
REHABILITATION OF POWER HOUSE
DETAILED FRONT ELEVATION
SCALE: 1:50 MTS.



3
A-04A-04
REHABILITATION OF POWER HOUSE
DETAILED RIGHT-SIDE ELEVATION
SCALE: 1:50 MTS.

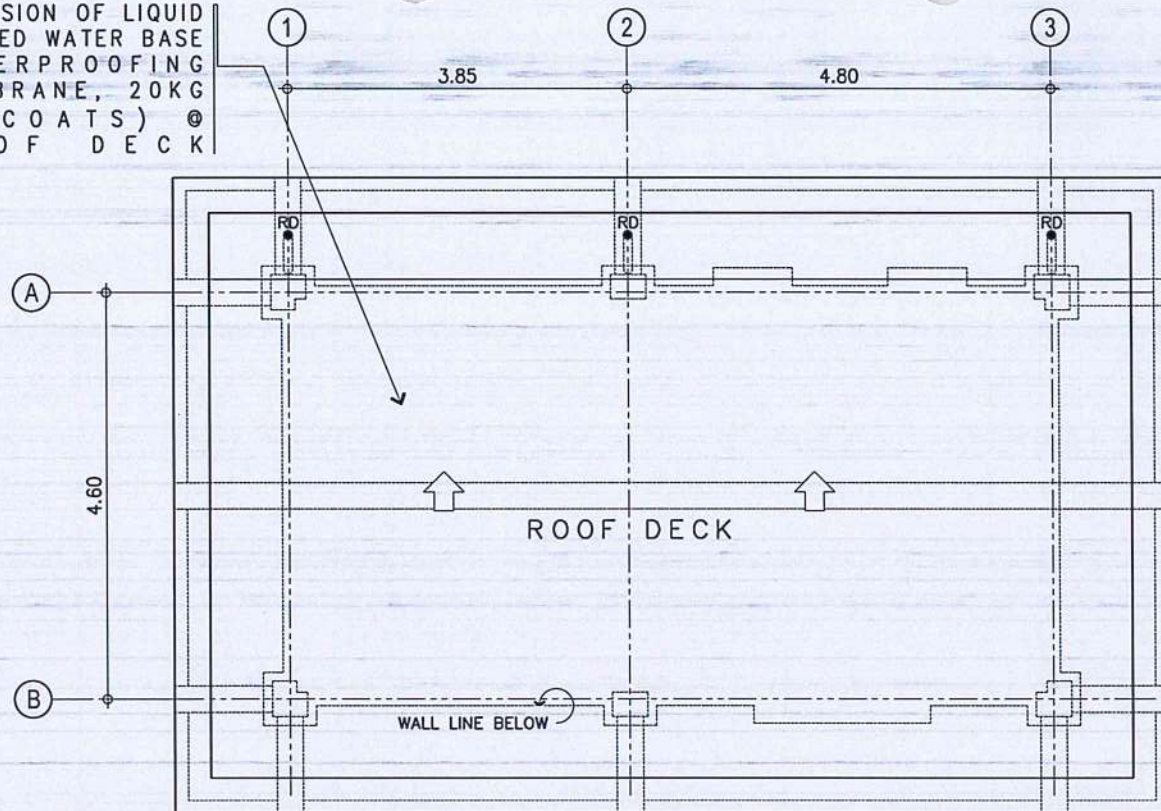


2
A-04A-04
REHABILITATION OF POWER HOUSE
DETAILED REAR ELEVATION
SCALE: 1:50 MTS.



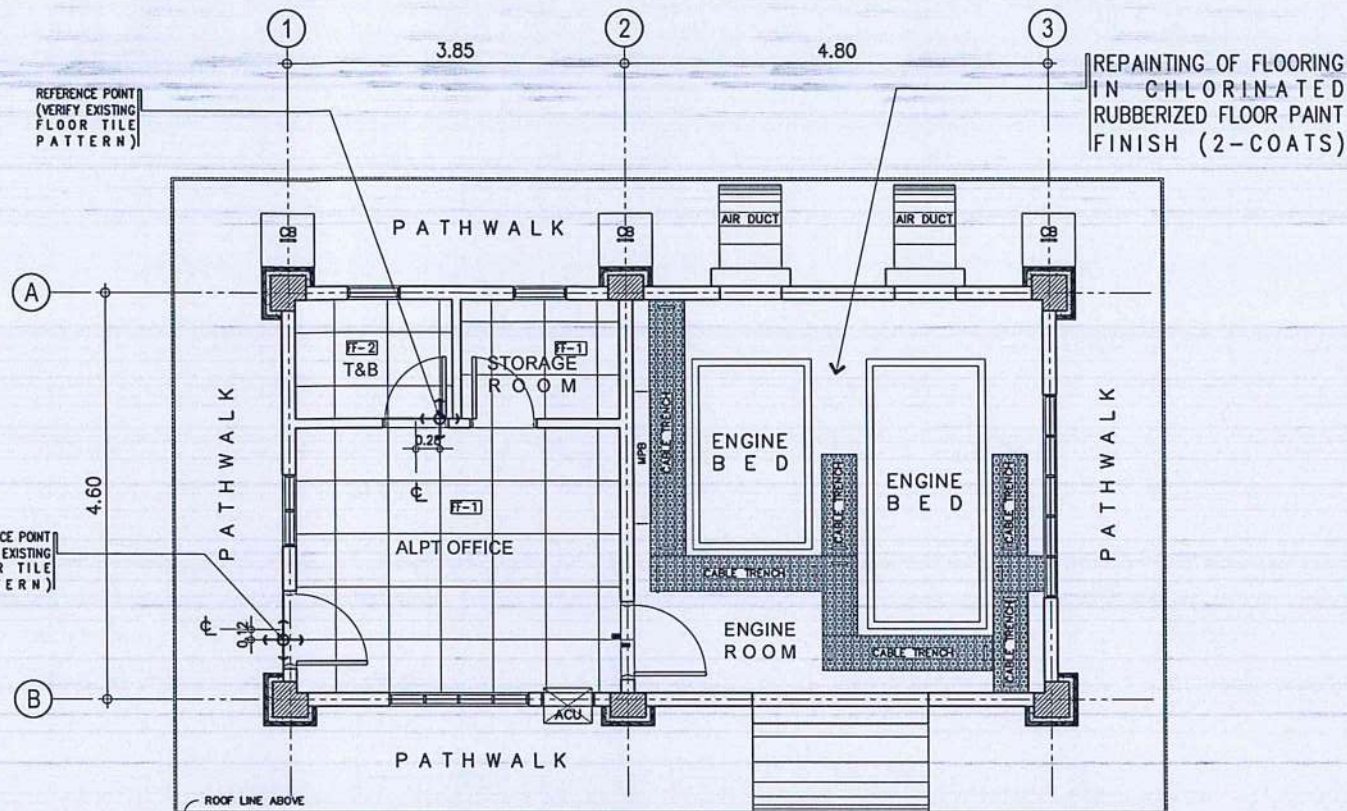
4
A-04A-04
REHABILITATION OF POWER HOUSE
DETAILED LEFT-SIDE ELEVATION
SCALE: 1:50 MTS.

PROVISION OF LIQUID
APPLIED WATER BASE
WATERPROOFING
MEMBRANE, 20KG
(4 COATS) @
ROOF DECK

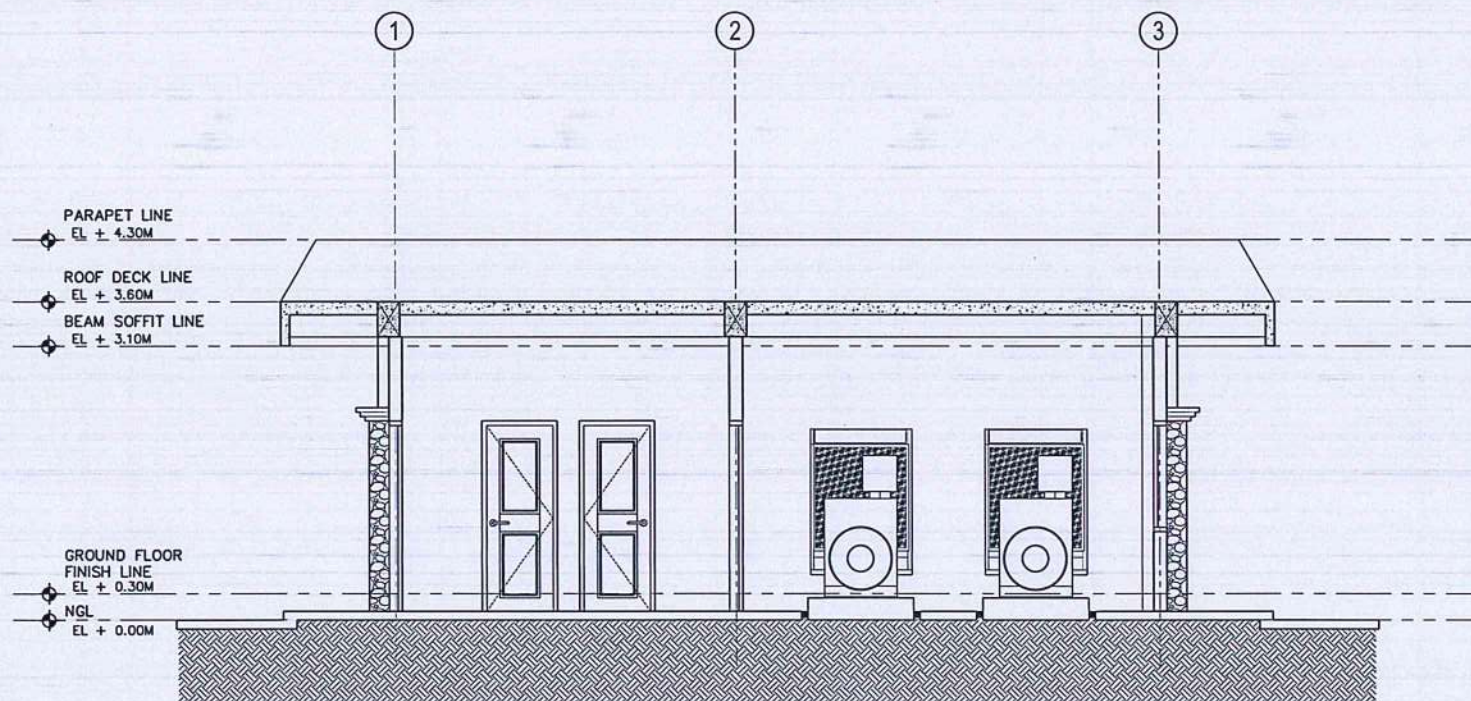


REHABILITATION OF POWER HOUSE
ROOF PLAN
SCALE: 1:50 MTS.

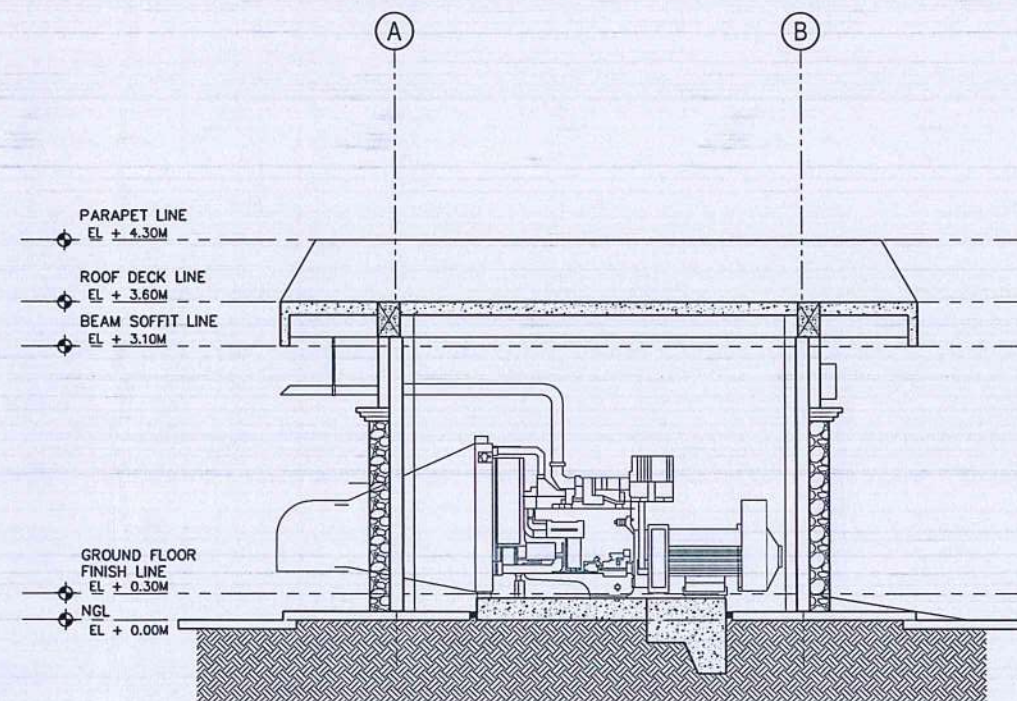
LEGEND	
TAG	FLOOR FINISHES
FF-1	600MM X 600MM HOMOGENEOUS TILES POLISHED FINISH
FF-2	600MM X 600MM HOMOGENEOUS TILES MATTE FINISH
NOTE: OBSERVE 3MM TILE SPACING FOR GROUT (SUBMIT GROUT SAMPLE FOR APPROVAL)	



REHABILITATION OF POWER HOUSE
FLOOR TILE LAYOUT PLAN
SCALE: 1:50 MTS.



REHABILITATION OF POWER HOUSE
LONGITUDINAL SECTION
SCALE: 1:50 MTS.



REHABILITATION OF POWER HOUSE
CROSS SECTION
SCALE: 1:50 MTS.

OTHER SCOPE:
• REPAIRING OF ALL INTERIOR AND EXTERIOR WALLS, COLUMNS & CEILINGS (SEE DETAILED PLANS)



CIVIL AVIATION AUTHORITY OF THE PHILIPPINES
AERODROME DEVELOPMENT AND MANAGEMENT SERVICE
NAIA ROAD, 1300 PASAY CITY

THIS DRAWINGS AND DESIGN IS EXCLUSIVE PROPERTIES OF CIVIL AVIATION AUTHORITY OF THE PHILIPPINES AND SUCH MUST NOT BE REPRODUCED, EXHIBITED, LOANED NOR COPIED IN PART OR IN WHOLE WITHOUT PROPER PERMISSION AND/OR WRITTEN CONSENT FROM THE DIRECTOR GENERAL CAAP.

AERODROME DEVELOPMENT AND MANAGEMENT SERVICE

INFRASTRUCTURE DEVELOPMENT AND DESIGN DIVISION

DESIGN STAFF:	INITIAL / DATE
DESIGNED BY: IDDD	
DRAWN BY: RCJ	
CHECKED BY: SJD	

REVIEWED BY:

RAUL R. CRUCENA
Division Chief III, IDDD-ADMS

SUBMITTED BY:
ARNEL F. BORLADO
Department Manager III, AED-ADMS

RECOMMENDED APPROVAL:

LT COL VALENTINO A DIONELA PAF (RET)
ADG II, ADMS

APPROVED:

CAPTAIN MANUEL ANTONIO L. TAMAYO
Director General

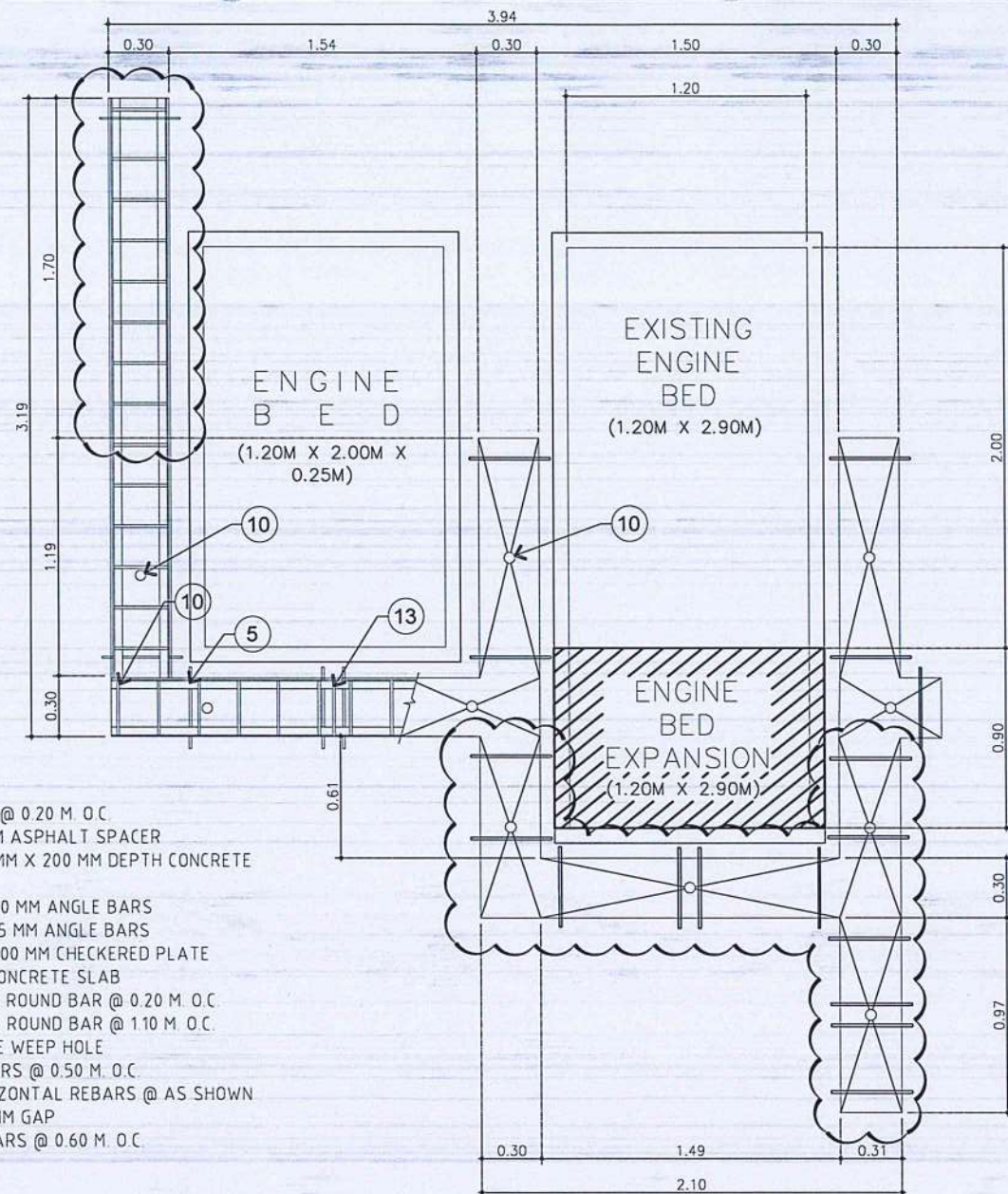
NOTES/REVISIONS:

PROJECT:
REHABILITATION OF POWERHOUSE AND SUPPLY, DELIVERY AND INSTALLATION OF GENERATOR SET AT BASCO AIRPORT

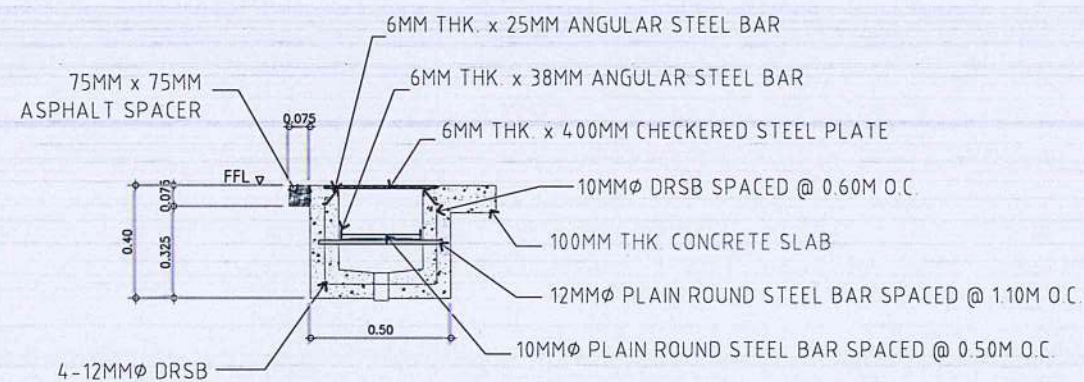
LOCATION:
BASCO AIRPORT
BARANGAY IHUVOK II,
BASCO, BATANES

SHEET CONTENTS:
• ROOF PLAN
• LONGITUDINAL SECTION
• CROSS SECTION

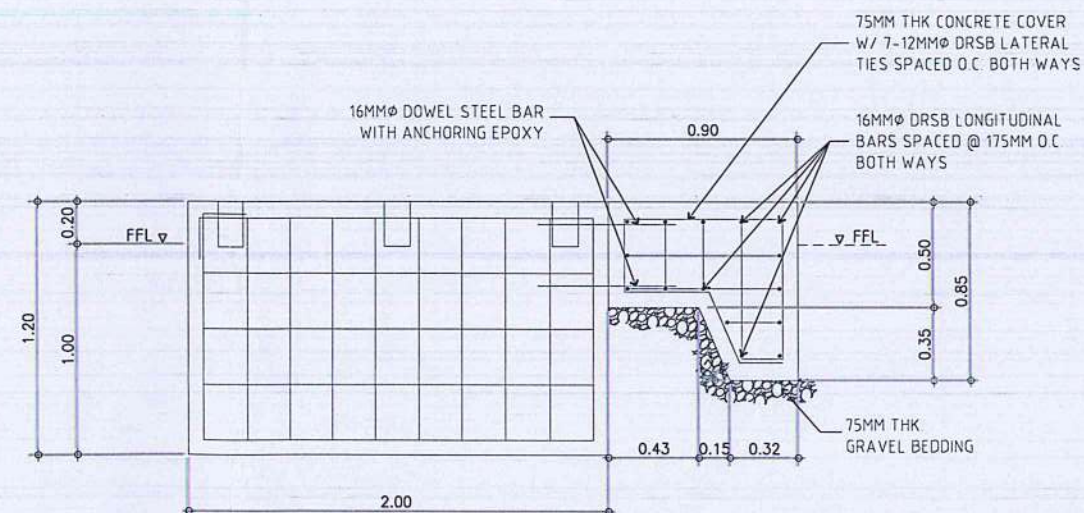
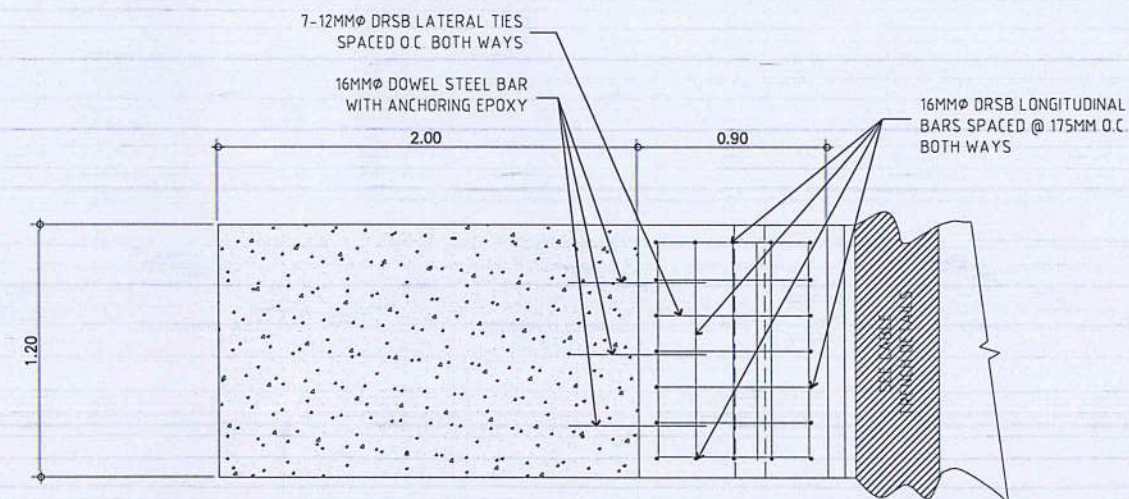
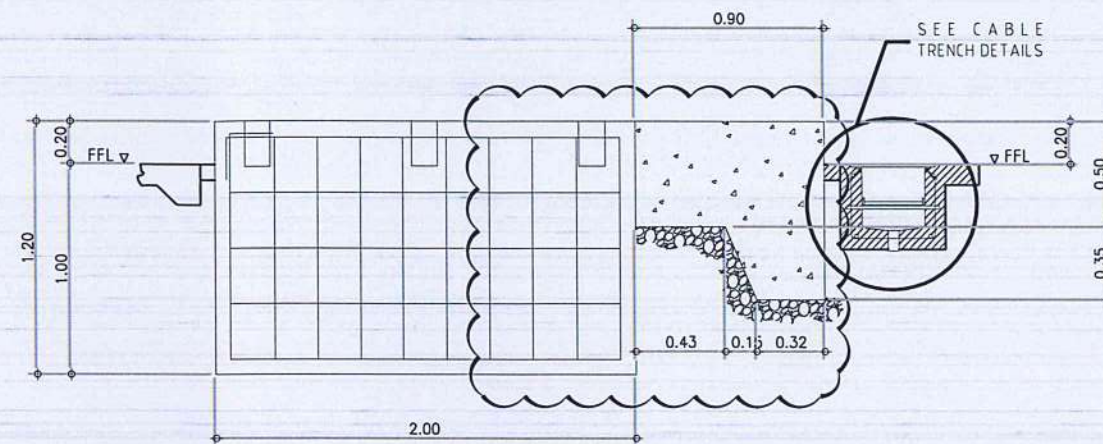
DRAWING SCALE:	SHEET NO:
AS SHOWN	A - 05
	05 05



REHABILITATION OF POWER HOUSE
DETAILED PLAN OF CABLE TRENCH
SCALE: 1:20 MTS.
S-02S-02



REHABILITATION OF POWER HOUSE
DETAILED SECTION OF CABLE TRENCH
SCALE: 1:10 MTS.
S-02S-02



REHABILITATION OF POWER HOUSE
DETAILED SECTIONS OF ENGINE BED
SCALE: 1:20 MTS.
S-01S-01



REPUBLIC OF THE PHILIPPINES
CIVIL AVIATION AUTHORITY OF THE PHILIPPINES
1101 ROAD, 1000 PASAY CITY

THIS DRAWING IS EXCLUSIVE PROPERTY OF CIVIL AVIATION AUTHORITY OF THE PHILIPPINES AND MUST NOT BE REPRODUCED, EXHIBITED, LOANED OR COPIED IN PART OR IN WHOLE WITHOUT PROPER PERMISSION AND/OR WRITTEN CONSENT FROM THE DIRECTOR GENERAL CAAP.

AERODROME DEVELOPMENT AND MANAGEMENT SERVICE

INFRASTRUCTURE DEVELOPMENT AND DESIGN DIVISION

DESIGN STAFF	INITIAL/DATE
DESIGNED BY: IDDD	
DRAWN BY: KCM	
CHECKED BY: E.D.Jr.	
DATE:	

REVIEWED BY:
RAUL R. CRUCENA
Division Chief III, IDDD - ADMS

SUBMITTED BY:
ARNEL F. BORLADO
Department Manager III, AED - ADMS

RECOMMEND APPROVAL:
LT COL. VALENTINO A. DIONELA PAF (RET)
Assistant Director General II, ADMS

APPROVED:
CAPTAIN MANUEL ANTONIO L. TAMAYO
Director General, CAAP

NOTES / REVISIONS:

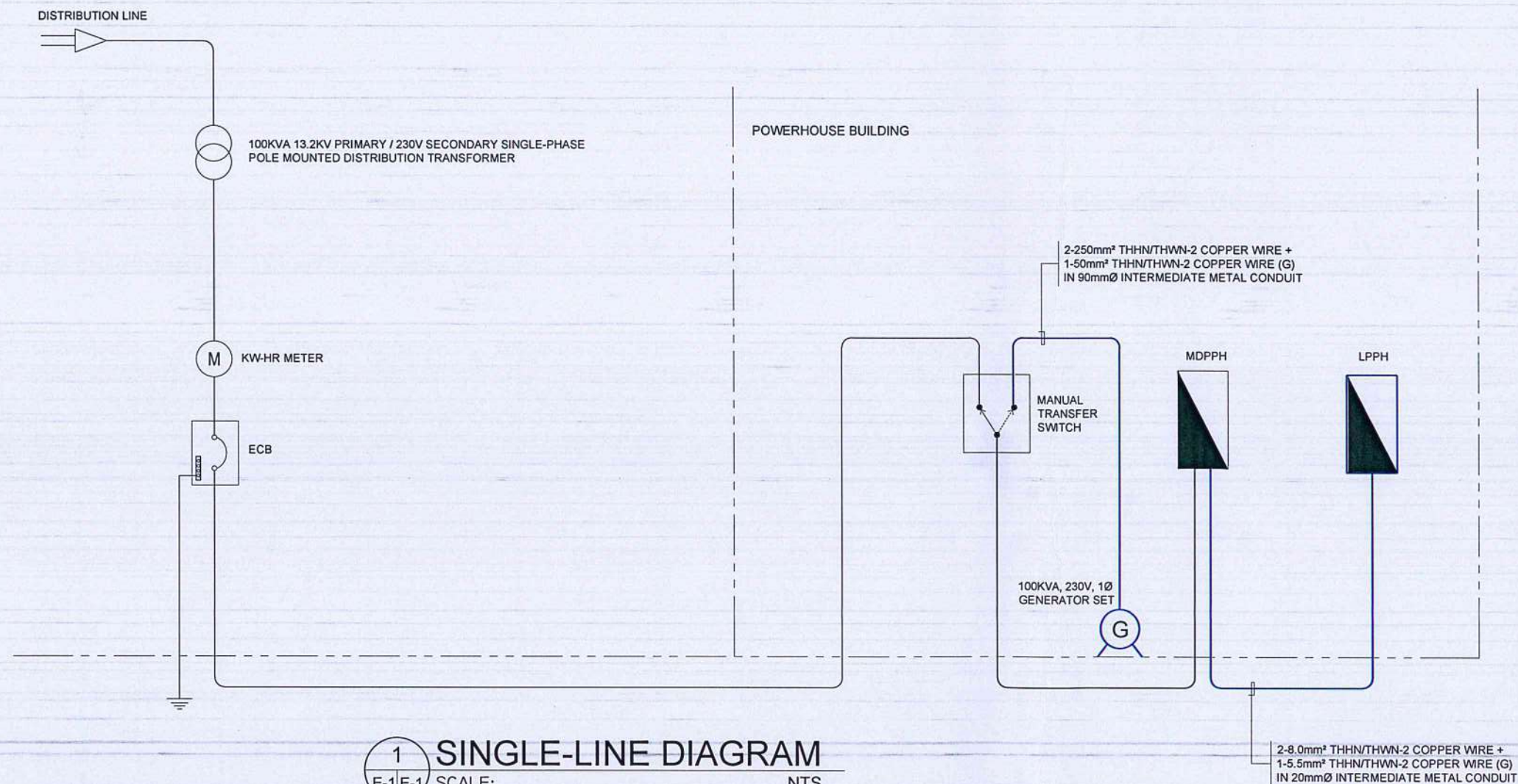
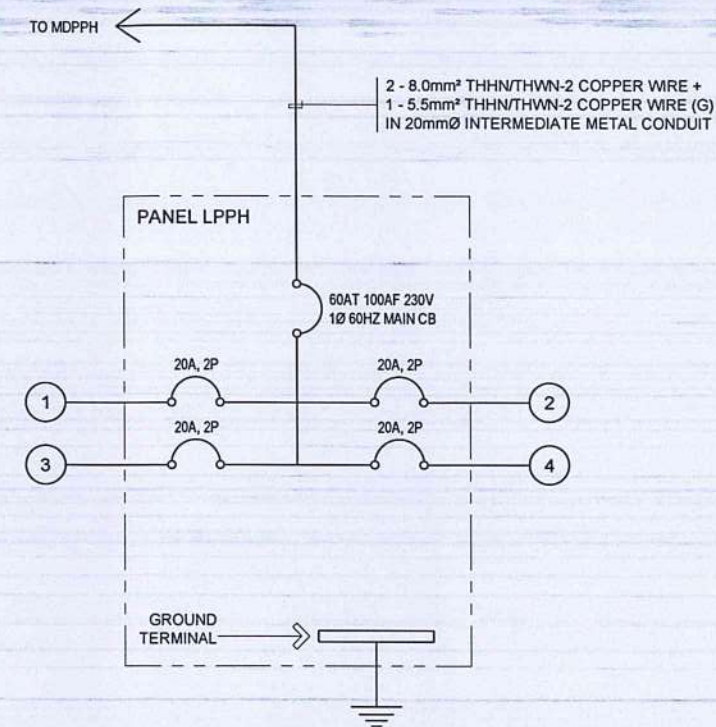
PROJECT:
REHABILITATION OF POWER HOUSE AND SUPPLY, DELIVERY & INSTALLATION OF GENERATOR SET AT BASCO AIRPORT

LOCATION:
BASCO AIRPORT
BASCO, BATANES

SHEET CONTENTS:
* DETAILED PLAN OF CABLE TRENCH
* DETAILED SECTION OF CABLE TRENCH
* DETAILED SECTION OF ENGINE BED (EXPANSION)

AS SHOWN S-01

1. ALL ELECTRICAL WORKS AND INSTALLATIONS SHALL COMPLY WITH THE PROVISIONS OF THE LATEST EDITION OF THE PHILIPPINE ELECTRICAL CODE WITH THE RULES AND REGULATIONS OF THE NATIONAL AND LOCAL AUTHORITIES CONCERNED IN THE ENFORCEMENT OF ELECTRICAL LAWS AND REGULATIONS OF THE UTILITY COMPANIES CONCERNED.
2. ALL ELECTRICAL WORKS HEREIN SHALL BE DONE UNDER THE DIRECT SUPERVISION OF A DULY REGISTERED ELECTRICAL ENGINEER.
3. ALL ELECTRICAL EQUIPMENT SHALL BE PROPERLY GROUNDED IN ACCORDANCE WITH THE REQUIREMENT OF THE PHILIPPINE ELECTRICAL CODE.
4. ELECTRICAL PIPES, WIRES AND CABLES TO BE USED SHALL BE UNDERWRITERS LABORATORY (UL) LISTED
5. ALL MATERIALS TO BE USED SHALL BE BRAND NEW AND OF THE APPROVED TYPE FOR BOTH LOCATION AND PURPOSE INTENDED.
6. ELECTRICAL CONDUITS, WIRES AND CABLES TO BE USED SHALL BE UNDERWRITERS LABORATORY (UL) LISTED.
7. PULL BOXES GAUGE NO. 16 (MINIMUM) SHALL BE PROVIDED BY THE CONTRACTOR WHENEVER REQUIRED AND NECESSARY AND SHALL BE INSTALLED AT CONVENIENT SPACE AND LOCATION TO FACILITATE WIRE PULLING EVEN IF THESE ITEMS ARE NOT SHOWN IN THE PLAN.
8. PRINTED INDEX LABEL SHALL BE AFFIXED TO INSIDE SURFACE OF EACH PANEL BOARD DOOR, CLEARLY INDICATING AREA AND TYPE OF LOAD SERVED BY EACH BRANCH CIRCUIT PROTECTIVE DEVICE, INCLUDING SPARES. HAND WRITTEN WILL NOT BE ACCEPTED. ENGRAVED LAMINATED PLASTIC IDENTIFICATION PLATES SHALL BE FURNISHED AND INSTALLED ON ALL PANELS, PANELS SHALL BE AFFIXED IN FRONT OF PANELS.
9. ALL WORKS SHALL BE EXECUTED IN A WORKMANSHIP MANNER AND SHALL PRESENT A NEAT AND ORDERLY ACCEPTANCE. ALL WIRING SHALL BE CONCEALED AS MUCH AS POSSIBLE.



THIS DRAWING IS EXCLUSIVE PROPERTY
OF CIVIL AVIATION AUTHORITY OF THE
PHILIPPINES AND MUST NOT BE
REPRODUCED, EXHIBITED, LOANED OR
COPIED IN PART OR IN WHOLE WITHOUT
PROPER PERMISSION AND/OR WRITTEN
CONSENT FROM THE DIRECTOR GENERAL
CAAP.

AERODROME DEVELOPMENT
AND MANAGEMENT SERVICE

INFRASTRUCTURE DEVELOPMENT
AND DESIGN DIVISION

DESIGN STAFF	INITIAL/DATE
DESIGNED BY:	IDD
DRAWN BY:	RJA JR.
CHECKED BY:	EJD JR.
DATE:	

REVIEWED BY:

RAUL R. CRUCENA
Division Chief III, IDDD - ADMS

SUBMITTED BY:

ARNEL F. BORLADO
Department Manager III, AED - ADMS

RECOMMEND APPROVAL:


LT COL VALENTINO A DIONELA PAF (RET)
Assistant Director General II, ADMS

APPROVED: 

CAPTAIN MANUEL ANTONIO L. TAMAYO
Director General, CAAP

NOTES / REVISIONS:

PROJECT:

REHABILITATION OF POWER HOUSE AND
SUPPLY, DELIVERY & INSTALLATION OF
GENERATOR SET AT BASCO AIRPORT

LOCATION:

BASCO AIRPORT
BASCO, BATANES

SHEET CONTENTS:

- GENERAL NOTES & SPECIFICATIONS
- SINGLE LINE DIAGRAM

AS SHOWN

E-01