



REPUBLIC OF THE PHILIPPINES  
CIVIL AVIATION AUTHORITY OF THE PHILIPPINES  
MANILA, 100 PASAY CITY

THIS DRAWING IS EXCLUSIVE PROPERTY OF CIVIL AVIATION AUTHORITY OF THE PHILIPPINES AND MUST NOT BE REPRODUCED, EXHIBITED, LOANED OR COPIED IN PART OR IN WHOLE WITHOUT PROPER PERMISSION AND/OR WRITTEN CONSENT FROM THE DIRECTOR GENERAL CAAP.

AERODROME DEVELOPMENT AND MANAGEMENT SERVICE

INFRASTRUCTURE DEVELOPMENT AND DESIGN DIVISION

DESIGN STAFF INITIAL/DATE

DESIGNED BY: JDD

DRAWN BY: JAR

CHECKED BY: EJR

DATE:

REVIEWED BY:

RAUL R. CRUCENA  
Division Chief III, IDDD-ADMS

SUBMITTED BY:

ARNEL F. BORLADO  
Department Manager III, AED-ADMS

RECOMMENDED APPROVED:

LT COL VALENTINO A DIONELA PAF (RET)  
Assistant Director General II, ADMS

APPROVED BY:

CAPTAIN MANUEL ANTONIO L. TAMAYO  
Director General, CAAP

NOTES/REVISIONS:

PROJECT:

CONSTRUCTION OF TURN AROUND PAD - DIPOLOG

LOCATION:

DIPOLOG AIRPORT,  
ZAMBOANGA DEL NORTE

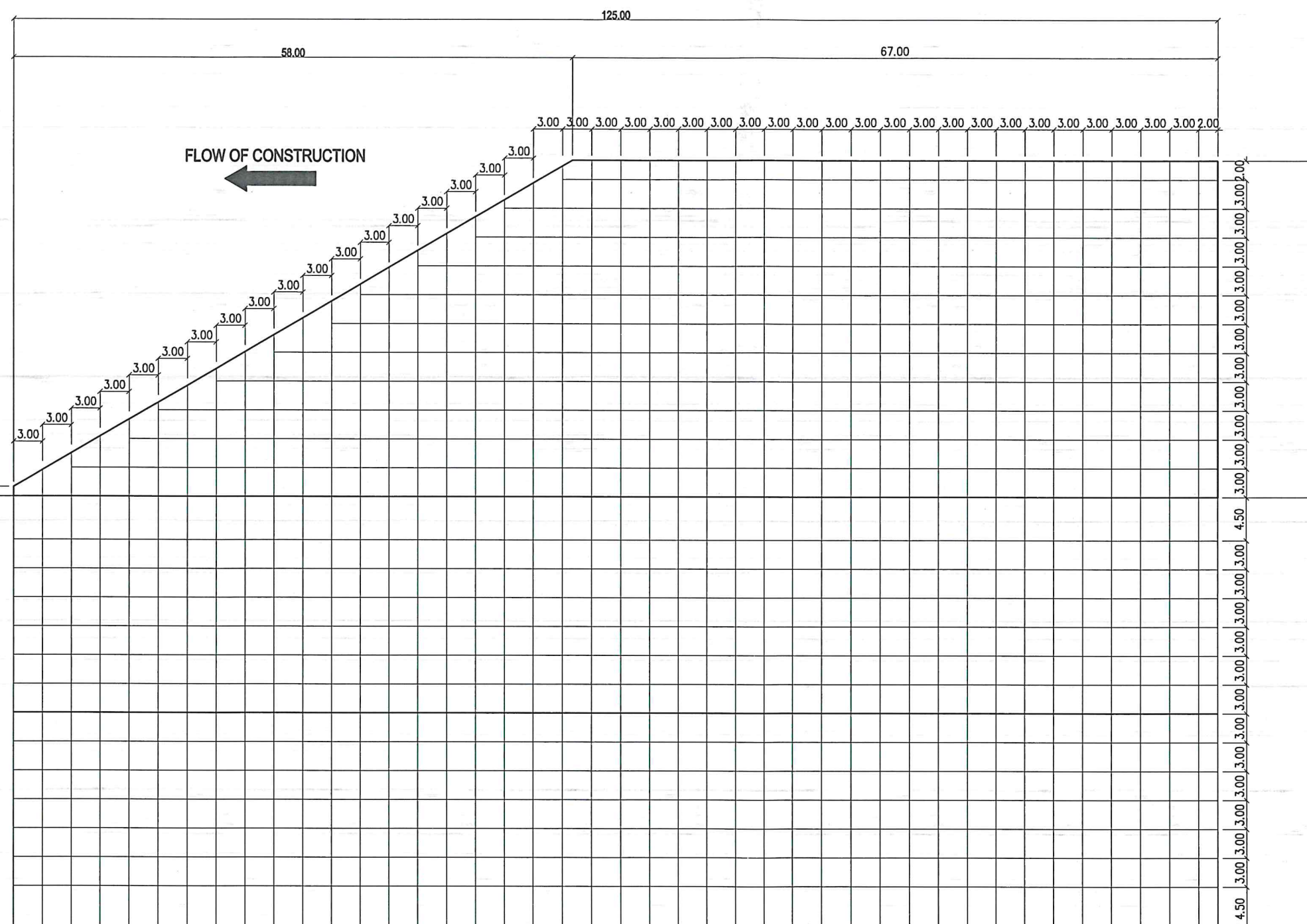
SHEET CONTENTS:

AS SHOWN

DRAWING SCALE:

AS SHOWN

SHEET NO:



TURN AROUND PAD @ RWY 20



SCALE: 1:5M







REPUBLIC OF THE PHILIPPINES  
CIVIL AVIATION AUTHORITY OF THE PHILIPPINES  
MARINA 100 PASAY CITY

THIS DRAWING IS EXCLUSIVE PROPERTY  
OF CIVIL AVIATION AUTHORITY OF THE  
PHILIPPINES AND MUST NOT BE  
REPRODUCED, EXHIBITED, LOANED OR  
COPIED IN PART OR IN WHOLE WITHOUT  
PROPER PERMISSION AND/OR WRITTEN  
CONSENT FROM THE DIRECTOR GENERAL  
CAAP.

## AERODROME DEVELOPMENT AND MANAGEMENT SERVICE

### INFRASTRUCTURE DEVELOPMENT AND DESIGN DIVISION

DESIGN STAFF	INITIAL/DATE
DESIGNED BY:	JMM
DRAWN BY:	HAR
CHECKED BY:	EJR

DATE: \_\_\_\_\_  
REVIEWED BY:   
RAUL R. GRUCENA  
Division Chief III, IDDD-ADMS

SUBMITTED BY:   
ARNEL F. BORLADO  
Department Manager III, AED-ADMS

RECOMMENDED APPROVED:   
LT COL VALENTINO A. DIONELA PAF (RET)  
Assistant Director General II, ADMS

APPROVED BY:   
CAPTAIN MANUEL ANTONIO L. TAMAYO  
Director General, CAAP

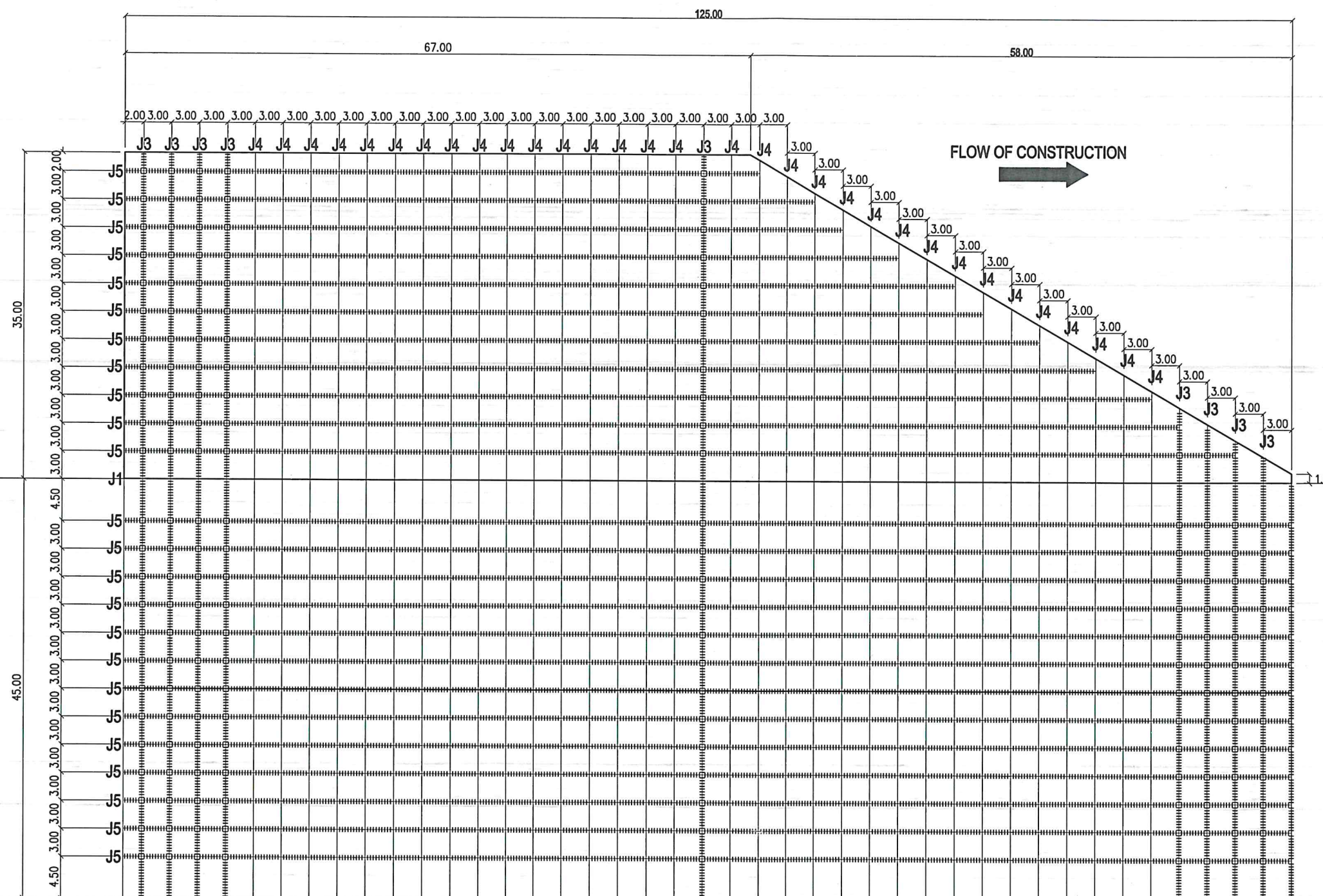
NOTES/REVISIONS:  
\_\_\_\_\_  
\_\_\_\_\_  
\_\_\_\_\_  
\_\_\_\_\_  
\_\_\_\_\_

PROJECT:  
CONSTRUCTION OF TURN AROUND PAD -  
DIPOLOG

LOCATION:  
DIPOLOG AIRPORT,  
ZAMBOANGA DEL NORTE

SHEET CONTENTS:  
AS SHOWN

DRAWING SCALE:	SHEET NO:
AS SHOWN	



## TURN AROUND PAD @ RWY 02



### DOWEL PLAN

SCALE: 1:5M





REPUBLIC OF THE PHILIPPINES  
CIVIL AVIATION AUTHORITY OF THE PHILIPPINES  
MA ROAD 100 PASAY CITY

THIS DRAWING IS EXCLUSIVE PROPERTY  
OF CIVIL AVIATION AUTHORITY OF THE  
PHILIPPINES AND MUST NOT BE  
REPRODUCED, EXHIBITED, LOANED OR  
COPIED IN PART OR IN WHOLE WITHOUT  
PROPER PERMISSION AND/OR WRITTEN  
CONSENT FROM THE DIRECTOR GENERAL  
CAAP.

**AERODROME DEVELOPMENT AND  
MANAGEMENT SERVICE**

**INFRASTRUCTURE DEVELOPMENT AND DESIGN  
DIVISION**

DESIGN STAFF	INITIAL/DATE
DESIGNED BY:	JDD
DRAWN BY:	HAR
CHECKED BY:	EJR
DATE:	

REVIEWED BY:  
  
**RAUL R. CRUCENA**  
Division Chief III, IDDD-ADMS

SUBMITTED BY:  
  
**ARNEL F. BORLADO**  
Department Manager III, AED-ADMS

RECOMMENDED APPROVED:  
  
**LT COL VALENTINO A. DIONELA PAF (RET)**  
Assistant Director General II, ADMS

APPROVED BY:  
  
**CAPTAIN MANUEL ANTONIO L. TAMAYO**  
Director General, CAAP

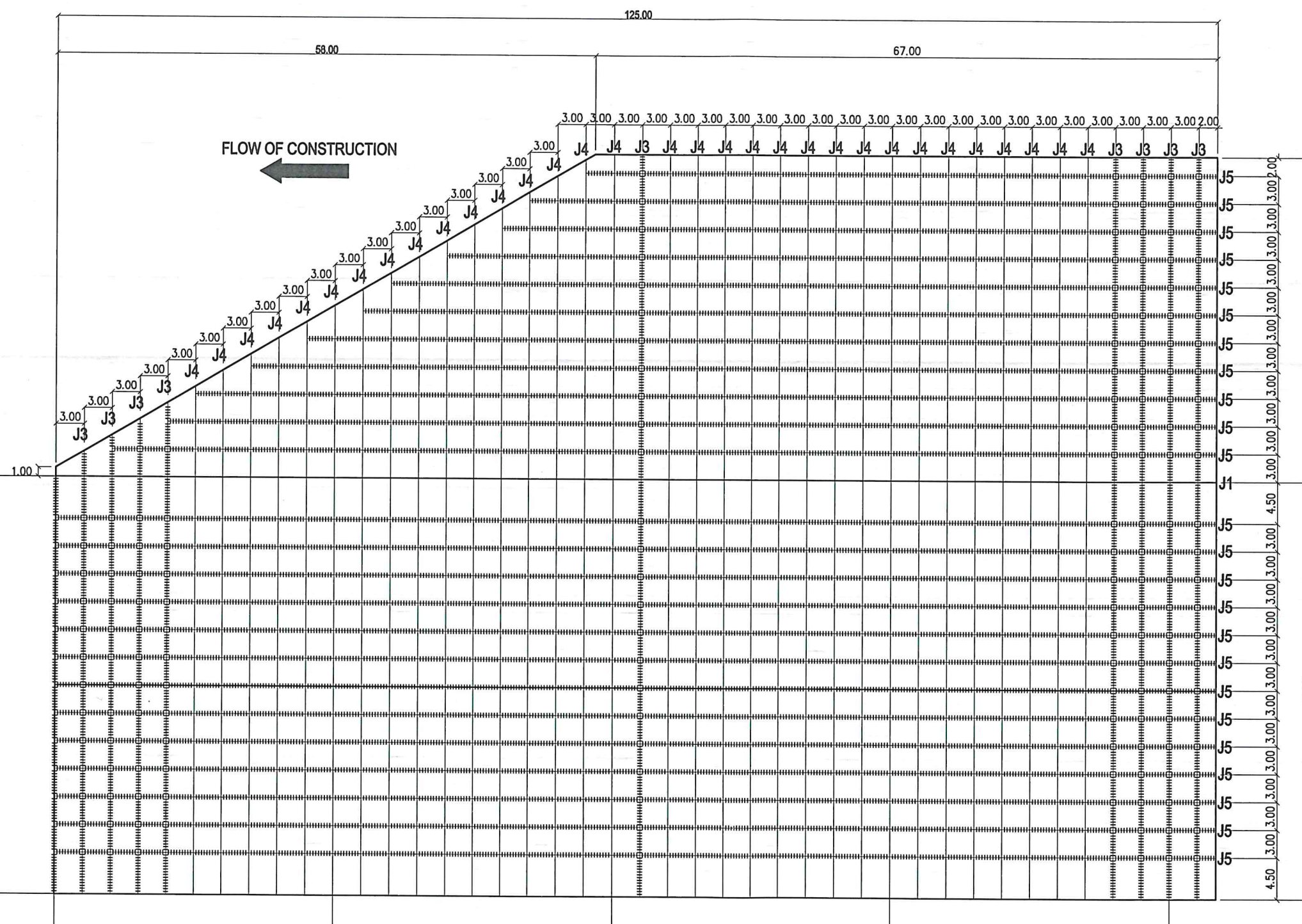
NOTES/REVISIONS:  
\_\_\_\_\_  
\_\_\_\_\_  
\_\_\_\_\_  
\_\_\_\_\_  
\_\_\_\_\_  
\_\_\_\_\_

PROJECT:  
**CONSTRUCTION OF TURN AROUND PAD -  
DIPOLOG**

LOCATION:  
**DIPOLOG AIRPORT,  
ZAMBOANGA DEL NORTE**

SHEET CONTENTS:  
**AS SHOWN**

DRAWING SCALE:	SHEET NO:
AS SHOWN	



**TURN AROUND PAD @ RWY 20**

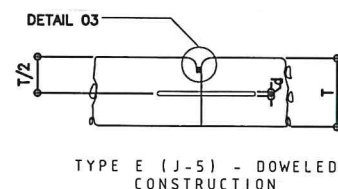
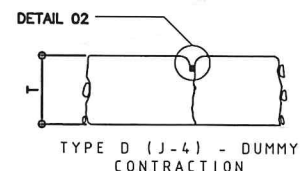
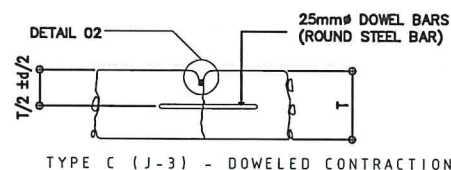
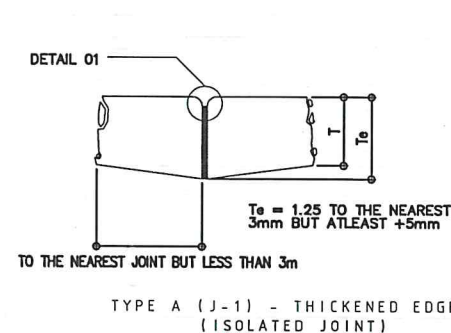


SCALE: 1:5M

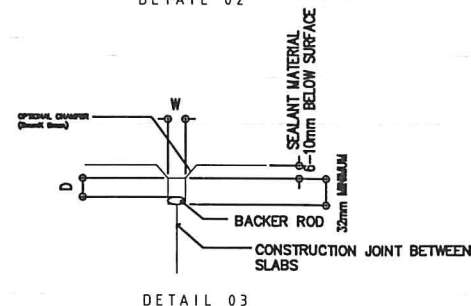
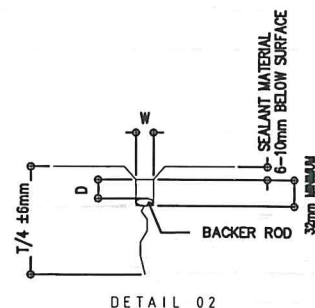
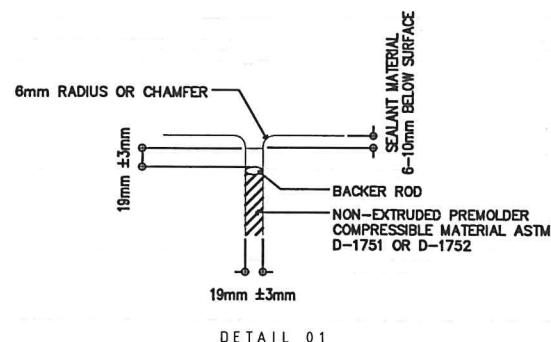


DIMENSIONS AND SPACING OF STEEL DOWELS						
PAVEMENT THICKNESS	DOWELS					
	CONTRACTION JOINTS			CONSTRUCTION JOINTS		
	DIAMETER Ø	LENGTH	SPACING	DIAMETER Ø	LENGTH	SPACING
7.5"-15" (191mm-380mm)	1" (25mm)	18" (460mm)	12" (305mm)	1" (25mm)	18" (460mm)	12" (305mm)

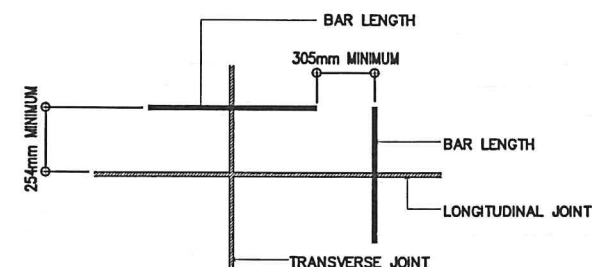
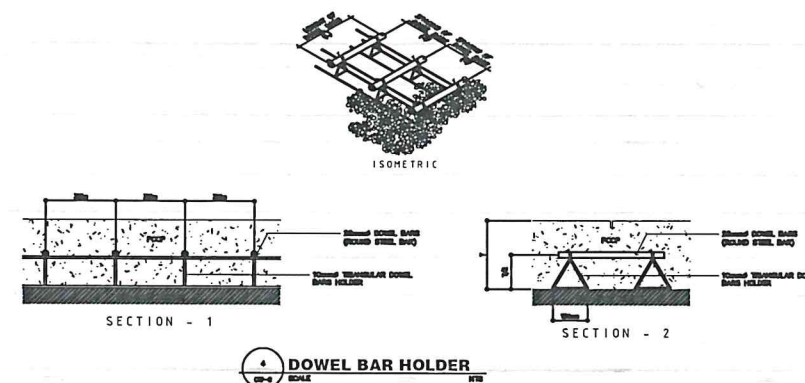
- NOTES:
- ALL STEEL DOWELS SHALL BE SUPPORTED AND HELD IN PLACE IN AN APPROVED ASSEMBLY.
  - ALL STEEL DOWELS SHALL BE OF GRADE 60 (60,000 psi / 414 MPa).
  - ALL FORMED JOINTS SHALL BE FINISHED WITH RADIUS OF 6mm OR 13mm.
  - ALL GROOVES OF CONTRACTION JOINTS SHALL BE SAWED WITHIN 24 HOURS.
  - WHERE PAVING OPERATIONS ARE DELAYED OR STOPPED, PROVIDE DOWELED CONSTRUCTION JOINT.
  - CONCRETE BLOCKING SHALL BE 3.0m BY 3.0m, UNLESS OTHERWISE GOVERNED BY ABUTTING EDGE.
  - ALL PAVING JOINTS SHALL BE FILLED WITH JOINT SEALANT AS SPECIFIED.
  - PROVIDE PIN HOLDERS EVERY 1.5M AT TRANSVERSE JOINTS



1  
CW-6 SCALE NTS  
**DETAIL OF PAVING JOINTS**



2  
CW-6 SCALE NTS  
**DETAIL OF JOINT SEALANT**



3  
CW-6 SCALE NTS  
**DOWELS AT EDGE OF JOINT**



THIS DRAWING IS EXCLUSIVE PROPERTY OF CIVIL AVIATION AUTHORITY OF THE PHILIPPINES AND MUST NOT BE REPRODUCED, EXHIBITED, LOANED OR COPIED IN PART OR IN WHOLE WITHOUT PROPER PERMISSION AND/OR WRITTEN CONSENT FROM THE DIRECTOR GENERAL CAAP.

AERODROME DEVELOPMENT AND MANAGEMENT SERVICE

INFRASTRUCTURE DEVELOPMENT AND DESIGN DIVISION

DESIGN STAFF	INITIAL/DATE
DESIGNED BY:	JDND
DRAWN BY:	HAR
CHECKED BY:	EJR
DATE:	

REVIEWED BY:

RAUL R. CRUCENA  
Division Chief III, IODD-ADMS

SUBMITTED BY:

ARNEL F. BORLADO  
Department Manager III, AED-ADMS

RECOMMENDED APPROVED:

LT COL VALENTINO A DIONELA PAF (RET)  
Assistant Director General II, ADMS

APPROVED BY:

CAPTAIN MANUEL ANTONIO L. TAMAYO  
Director General, CAAP

NOTES/REVISIONS:

PROJECT:

CONSTRUCTION OF TURN AROUND PAD - DIPOLOG

LOCATION:

DIPOLOG AIRPORT, ZAMBOANGA DEL NORTE

SHEET CONTENTS:

AS SHOWN

DRAWING SCALE:

AS SHOWN

SHEET NO:



REPUBLIC OF THE PHILIPPINES  
CIVIL AVIATION AUTHORITY OF THE PHILIPPINES  
MANILA, 1000 PASAY CITY

THIS DRAWING IS EXCLUSIVE PROPERTY OF CIVIL AVIATION AUTHORITY OF THE PHILIPPINES AND MUST NOT BE REPRODUCED, EXHIBITED, LOANED OR COPIED IN PART OR IN WHOLE WITHOUT PROPER PERMISSION AND/OR WRITTEN CONSENT FROM THE DIRECTOR GENERAL CAAP.

AERODROME DEVELOPMENT AND MANAGEMENT SERVICE

INFRASTRUCTURE DEVELOPMENT AND DESIGN DIVISION

DESIGN STAFF	INITIAL/DATE
DESIGNED BY:	JDND
DRAWN BY:	HAR
CHECKED BY:	EJOUR
DATE:	

REVIEWED BY:  
RAUL R. CRUCENA  
Division Chief III, IDDD-ADMS

SUBMITTED BY:  
ARNEL F. BORLADO  
Department Manager III, AED-ADMS

CONCURRED BY:  
GARY M. JADIE  
Acting Chief, ANS

RECOMMENDED APPROVED:  
LT COL VALENTINO A DIONELA PAF (RET)  
Assistant Director General II, ADMS

APPROVED BY:  
CAPTAIN MANUEL ANTONIO L. TAMAYO  
Director General, CAAP

NOTES/REVISIONS:

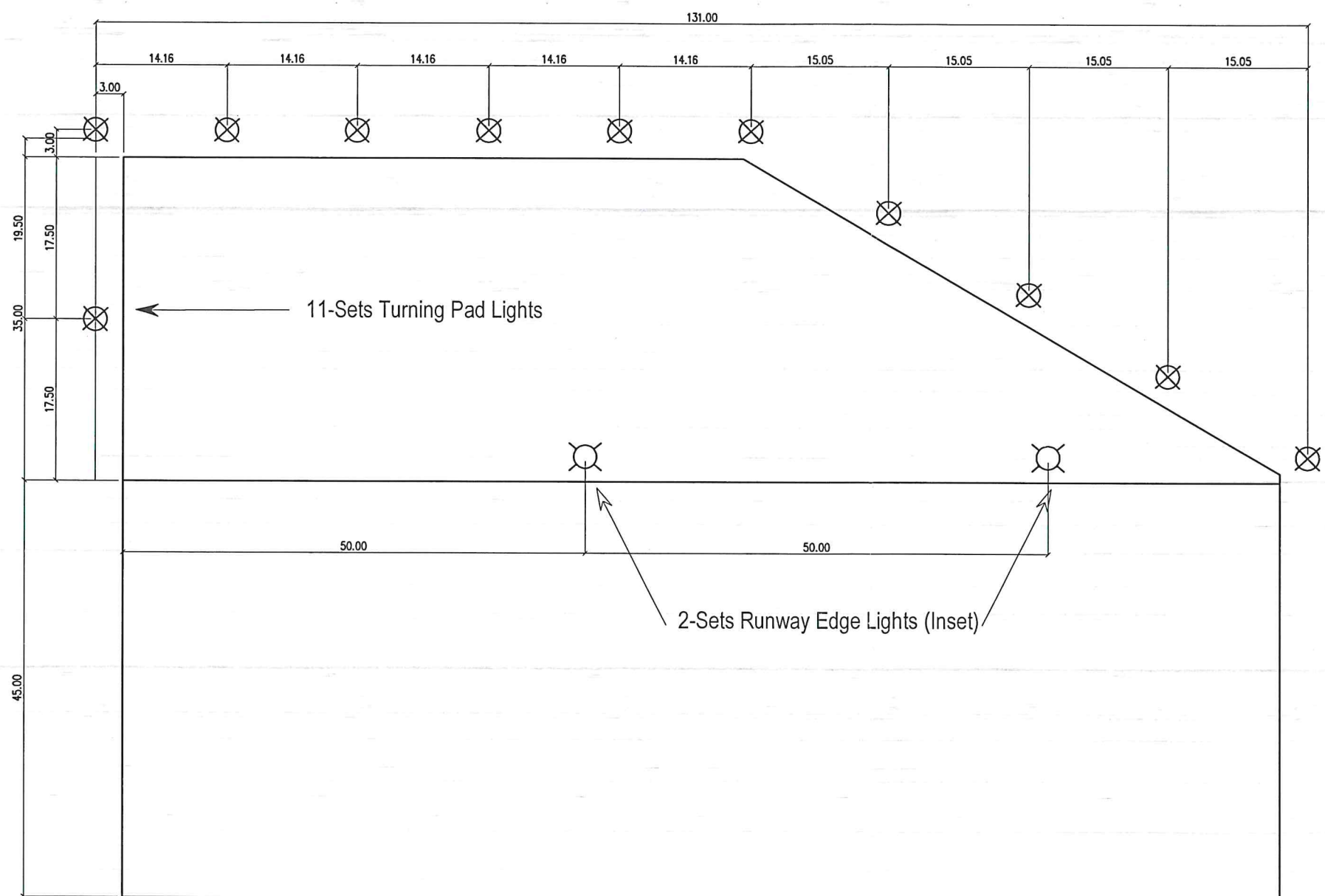
PROJECT:  
CONSTRUCTION OF TURN AROUND PAD - DIPOLOG

LOCATION:  
DIPOLOG AIRPORT,  
ZAMBOANGA DEL NORTE

SHEET CONTENTS:  
AS SHOWN

DRAWING SCALE:	SHEET NO:
AS SHOWN	

NOTE: SPACING OF LIGHTING FIXTURES SHALL BE CONCURRED BY ANS UPON INSTALLATION



RUNWAY EDGE LIGHTS & TURNING PAD LIGHTS LAYOUT@ RWY 02