



**REQUEST FOR QUOTATION
 NO.: RFQ-2024-034**

Date: **July 25, 2024**

Name of the Company : _____
Address : _____
Contact No. : _____
PhilGEPS Registration No. : _____

Sir/Madam:


Please quote your best offer (lowest net, price, taxes, and government discount terms included) and **submit your Quotation duly signed by you or your duly authorized representative not later than July 31, 2024 @ 3:00 PM** for:

Name of the Project : REHABILITATION/IMPROVEMENT OF STAFF HOUSE AT LAOAG AIRPORT
Location : LAOAG INTERNATIONAL AIRPORT
Terms of Reference :

Sealed quotations must be submitted either personally to Ms. Hazelle May C. Andres, Head, Secretariat of the Bids and Awards Committee of Laoag International Airport (BAC-LIA) or e-mail at bac_area1@caap.gov.ph. For any clarification, do not hesitate to contact us through the contact information seen below.

Aside from the Terms and Conditions provided at the back portion of this RFQ, please observed the following general conditions:

1. **The following documents must be attached upon submission of the Quotation:**
 - a) Mayor's Permit
 - b) PhilGEPS Certificate of Registration
2. All quotations shall be considered as fixed price and not subject to price escalation during the contract implementation.
3. Payment shall be made through check.


ATTY. RIZZA JOY S. VALLESTERO
 Chairperson, Bids and Awards Committee

After having carefully read and accepted the Terms and Conditions, I/We submit our quotations for the following item/s:

ITEM DESCRIPTION (SPECIFY THE BRAND AND MODEL OF YOUR OFFER/PROPOSAL, IF APPLICABLE)	APPROVED BUDGET OF THE CONTRACT (ABC)	OFFER*						REMARKS
		PRICE				Compliance w/ Technical Specifications		
		QTY	UNIT	Unit Price	Total Price	Yes	No	
1. Supply of materials, equipment and labor which will be used for the project titled: "Rehabilitation/Improvem	₱810,222.39	1	Lot					





Republic of the Philippines
CIVIL AVIATION AUTHORITY OF THE PHILIPPINES

<p>ent of Staff House at Laoag Airport”</p> <p>SCOPE OF WORKS:</p> <ol style="list-style-type: none"> 1. Project Billboard 2. Site Works 3. Concrete Works 4. Ceiling Works 5. Roofing Works 6. Painting Works 7. Windows 8. Electrical Works 9. OHSP <p>Number of Days to Complete: Fifty (50) Calendar Days</p>								
TOTAL ABC	₱810,222.39							
GRAND TOTAL:								

Note: Quotation for each item must not exceed the ABC per item

**Signature over Printed Name
 Supplier/Dealer/Contractor**





TERMS AND CONDITIONS

1. Bidders shall provide correct and accurate information required in this form.
2. Price quotation/s must be valid for a period of Thirty (30) calendar days from the date of submission.
3. Price quotation/s shall be denominated in Philippine Peso which includes all taxes, duties and/or levies payable.
4. Quotations exceeding the ABC shall be rejected.
5. Award of contract shall be made to the lowest quotation (for goods and infrastructure) or, the highest rated offer (for consulting services) which complies with the minimum technical specifications and other terms and conditions stated herein. Further, the most advantageous to the government to the point of quality of materials and prices as well as the responsiveness of the bids shall be the basis of the award.
6. *The Head of the Procuring Entity reserves the right to reject any and all bids, declare a failure of bidding or not award the contract in any of the following conditions set forth by Sec. 41 (Reservation Clause) of the Revised IRR of RA 9184.*
7. The Supply Office of LIA shall have the right to inspect and to test the goods to confirm their conformity to the technical specifications.
8. **Date of Completion/Delivery:** In case of an approved POW, within the period stated therein. While, in cases of regular procurement, within 7-10 days or less, after the issuance of the Purchase Order. Further, any request of extension shall be sent to the End-User/Implementing Facility concern.
9. **Mode and Terms of Payment:** Within ten (10) working days after the supplies/materials and labor/service have been inspected and accepted, respectively, through a check issued by the procuring entity.
10. Liquidated damages equivalent to one tenth of one percent (0.001%) of the value of the goods not delivered within the prescribed delivery period shall be imposed per day of delay. This Office (LIA) shall rescind the contract once the cumulative amount of liquidated damages reaches ten percent (10%) of the amount of the contract, without prejudice to other courses of action and remedies open to it.

NOTE: The aforecited Terms and Conditions shall be without prejudice to any provisions of a Contract which will be executed by and between the Procuring Entity and Contractor/Supplier/Dealer in order to conform with the requirements set forth by RA 9184.





I. PROJECT BILLBOARD

/ Quantity: 1 lot

A. DIRECT COST

a. MATERIALS		QUANTITY	UNIT COST	AMOUNT
1	Project Tarpaulin 8' x 8' (with frame)	1 lot	/lot	
MATERIAL COST				

b. EQUIPMENT		QUANTITY	UNIT COST	AMOUNT
1				
EQUIPMENT COST				

c.		LABOR	NO. OF DAYS	UNIT COST	AMOUNT
	no. of manpower				
1					
2					
3					
LABOR COST					

TOTAL DIRECT COST

B. INDIRECT COST

1.	OCM(Overhead, Contingencies, Miscellaneous)		
2.	CONTRACTORS PROFIT		
			TOTAL MARK-UP

3.	Value Added Tax, VAT (OCM + Contractor's Profit + Direct Cost)	5%	
----	--	----	--

TOTAL INDIRECT COST

C. TOTAL COST

1.	DIRECT COST + INDIRECT COST	
----	------------------------------------	--

TOTAL UNIT COST



II. SITE WORKS

/ Quantity: 16.5 cu.m

A. DIRECT COST

a. MATERIALS		QUANTITY		UNIT COST		AMOUNT
1	Sand	16.5	cu.m		/cu.m	
2	3/4 Gravel	16.5	cu.m		/cu.m	
MATERIAL COST						

b. EQUIPMENT		QUANTITY		UNIT COST		AMOUNT
1	Demolition Hammer	1	day		/day	
2	Dump Truck	5	days		/days	
3	Welding Machine (300 A)	1	day		/day	
EQUIPMENT COST						

c.		no. of manpower	LABOR	NO. OF DAYS		UNIT COST		AMOUNT
1	1		Foreman	5	days		/days	
2	2		Skilled Worker	5	days		/days	
3	3		Laborer	5	days		/days	
LABOR COST								

TOTAL DIRECT COST

B. INDIRECT COST

1.	OCM(Overhead, Contingencies, Miscellaneous)			
2.	CONTRACTORS PROFIT			
			TOTAL MARK-UP	

3.	Value Added Tax, VAT (OCM + Contractor's Profit + Direct Cost)	5%		
----	--	----	--	--

TOTAL INDIRECT COST

C. TOTAL COST

1.	DIRECT COST + INDIRECT COST	
----	------------------------------------	--

TOTAL UNIT COST



III. CONCRETE WORKS

/ Quantity: 12.1 cu.m

A. DIRECT COST

a.	MATERIALS	QUANTITY		UNIT COST		AMOUNT
CONCRETE COLUMN 3.30 cu.m						
1	RSB 12mm x 6m	33.00	pcs		/pcs	
2	RSB 10mm x 6m	30.00	pcs		/pcs	
3	#16 Tie Wire	1.00	roll		/roll	
4	Cement	33.00	bags		/bags	
5	3/4" Gravel	2.00	cu.m		/cu.m	
6	Sand	4.00	cu.m		/cu.m	
SLAB ON GRADE 8.8 cu.m						
7	RSB 10mm x 6m	65.00	pcs		/pcs	
8	Cement	87.00	bags		/bags	
9	3/4" Gravel	10.00	cu.m		/cu.m	
10	Sand	5.00	cu.m		/cu.m	
11	CHB 5"	235.00	pcs		/pcs	
MATERIAL COST						

b.	EQUIPMENT	QUANTITY		UNIT COST		AMOUNT
1	One Bagger Mixer	1	day		/day	
EQUIPMENT COST						

c.	no. of manpower	LABOR	NO. OF DAYS		UNIT COST		AMOUNT
1	1	Foreman	7	days		/days	
2	2	Skilled Laborer	7	days		/days	
3	2	Common Laborer	7	days		/days	
LABOR COST							

TOTAL DIRECT COST

B. INDIRECT COST

1.	OCM(Overhead, Contingencies, Miscellaneous)			
2.	CONTRACTORS PROFIT			
			TOTAL MARK-UP	



3. Value Added Tax, VAT (OCM + Contractor's Profit + Direct Cost)	5%		
---	----	--	--

TOTAL INDIRECT COST

C. TOTAL COST

1. DIRECT COST + INDIRECT COST	
--------------------------------	--

TOTAL UNIT COST



IV. CEILING WORKS

/ Quantity: 143 sq. m

A. DIRECT COST

a. MATERIALS		QUANTITY		UNIT COST		AMOUNT
1	Ficem Board 4'x8'x3.5mm	35	pcs		/pcs	
2	Putty	3	pail		/pail	
3	Joint Perforated Tape (2" x 76mm)	4	rolls		/rolls	
4	Assorted Concrete Nail	2	kg		/kg	
5	Ficem Board 4'x8'x4.5mm	25	pcs		/pcs	
6	Double Furring Channel	60	pcs		/pcs	
7	Blind Rivet	3	box		/box	
8	Self Drilling Ficem Board Screw 20mm	2350	pcs		/pcs	
9	Wall Angle	50	pcs		/pcs	
MATERIAL COST						

b. EQUIPMENT		QUANTITY		UNIT COST		AMOUNT
1	Scaffoldings - 2 sets	10	days		/days	
EQUIPMENT COST						

c.		no. of manpower	LABOR	NO. OF DAYS		UNIT COST		AMOUNT
1		1	Foreman	10	days		/days	
2		2	Skilled Laborer	10	days		/days	
3		2	Common Laborer	10	days		/days	
LABOR COST								

TOTAL DIRECT COST

B. INDIRECT COST

1.	OCM(Overhead, Contingencies, Miscellaneous)			
2.	CONTRACTORS PROFIT			
			TOTAL MARK-UP	

3.	Value Added Tax, VAT (OCM + Contractor's Profit + Direct Cost)	5%		
----	--	----	--	--

TOTAL INDIRECT COST



C. TOTAL COST

1. DIRECT COST + INDIRECT COST

TOTAL UNIT COST



V. ROOFING WORKS

/ Quantity: 147 sq. m

A. DIRECT COST

a.	MATERIALS	QUANTITY		UNIT COST		AMOUNT
1	Welding Rod	2.00	kg		/kg	
2	Cut-off Machine blade	3.00	pcs		/pcs	
3	Rib Type Sheet, Pre-Painted 0.5mm	54.00	ln.m		/ln.m	
4	Texcrew 2"	470.00	pcs		/pcs	
5	C-Purlins 2" x 3" x 1.5mm	16.00	pcs		/pcs	
6	Angle Bar 1 1/2" x 1 1/2" x 1/4"	12.00	pcs		/pcs	
7	C-Purlins 2" x 6" x 1.5mm	5.00	pcs		/pcs	
8	Pre-Painted Gutter 18"	30.00	pcs		/pcs	
9	Pre-painted Flashing 0.5mm	9.00	pcs		/pcs	
10	Solvent Cement 100cc	1.00	can		/can	
11	Roof Sealant 500cc	1.00	can		/can	
12	Blind Rivets	1.00	box		/box	
13	PVC Elbow (Orange), 4"	26.00	pcs		/pcs	
14	PVC Pipe (Orange), 4"	41.00	pcs		/pcs	
MATERIAL COST						

b.	EQUIPMENT	QUANTITY		UNIT COST		AMOUNT
1	Cut-Off Machine	5	days		/days	
2	Welding Machine	5	days		/days	
3	Scaffoldings - 4 sets	5	days		/days	
EQUIPMENT COST						

c.	no. of manpower	LABOR	NO. OF DAYS		UNIT COST		AMOUNT
1	1	Foreman	5	days		/days	
2	2	Skilled Worker	5	days		/days	
3	3	Common Laborer	5	days		/days	
LABOR COST							

TOTAL DIRECT COST



B. INDIRECT COST

1. OCM(Overhead, Contingencies, Miscellaneous)			
2. CONTRACTORS PROFIT			
		TOTAL MARK-UP	
3. Value Added Tax, VAT (OCM + Contractor's Profit + Direct Cost)	5%		

TOTAL INDIRECT COST

C. TOTAL COST

1. DIRECT COST + INDIRECT COST	
--------------------------------	--

TOTAL UNIT COST



VI. PAINTING WORKS

/ Quantity: 671 sq. m

A. DIRECT COST

a.	MATERIALS	QUANTITY		UNIT COST		AMOUNT
1	Sand Paper	30	pcs		/pcs	
2	Rags	30	pcs		/pcs	
3	Putty	1	gal		/gal	
4	Flat Latex Paint	10	pail		/pail	
5	Acrylic Latex Paint, Semi Gloss	19	pail		/pail	
6	Paint Roller	4	pcs		/pcs	
7	Paint Brush(assorted)	4	pcs		/pcs	
MATERIAL COST						

b.	EQUIPMENT	QUANTITY		UNIT COST		AMOUNT
1	Scaffoldings - 2 sets	7	days		/days	
EQUIPMENT COST						

c.	no. of manpower	LABOR	NO. OF DAYS		UNIT COST		AMOUNT
1	1	Foreman	7	days		/days	
2	2	Skilled Laborer	7	days		/days	
3	2	Common Laborer	7	days		/days	
LABOR COST							

TOTAL DIRECT COST

B. INDIRECT COST

1.	OCM(Overhead, Contingencies, Miscellaneous)			
2.	CONTRACTORS PROFIT			
			TOTAL MARK-UP	

3.	Value Added Tax, VAT (OCM + Contractor's Profit + Direct Cost)	5%		
----	--	----	--	--

TOTAL INDIRECT COST



C. TOTAL COST

1. DIRECT COST + INDIRECT COST

TOTAL UNIT COST



VII. WINDOWS

/ Quantity: 26 sq. m

A. DIRECT COST

a.	MATERIALS	QUANTITY		UNIT COST		AMOUNT
1	6mm thk glass, complete with accessories, 1 way glass (please see attached drawings)	26.00	sq.m		/sq.m	
MATERIAL COST						

b.	EQUIPMENT	QUANTITY		UNIT COST		AMOUNT
1	Demolition Hammer	3	days		/days	
EQUIPMENT COST						

c.	no. of manpower	LABOR	NO. OF DAYS		UNIT COST		AMOUNT
1	1	Foreman	3	days		/days	
2	1	Skilled Laborer	3	days		/days	
3	1	Common Laborer	3	days		/days	
LABOR COST							

TOTAL DIRECT COST

B. INDIRECT COST

1.	OCM(Overhead, Contingencies, Miscellaneous)		
2.	CONTRACTORS PROFIT		
		TOTAL MARK-UP	

3.	Value Added Tax, VAT (OCM + Contractor's Profit + Direct Cost)	5%	
----	--	----	--

TOTAL INDIRECT COST

C. TOTAL COST

1.	DIRECT COST + INDIRECT COST	
----	------------------------------------	--

TOTAL UNIT COST



VIII. ELECTRICAL WORKS

/ Quantity: 1 lot

A. DIRECT COST

a.	MATERIALS	QUANTITY		UNIT COST	AMOUNT	
1	Round Recessed Vertical Pinlight Fixture	21	pcs	/pcs		
2	E27 LED Bulb 15 Watts Nature White	21	pcs	/pcs		
3	2x4ft. Surface Louver Housing 12"x48", No. of Lamps 2pcs 1200mm(4ft) T8 Tube	5	pcs	/pcs		
4	T8 Led Tube Light 18W 4ft Daylight Plastic	10	pcs	/pcs		
5	2 Gang CO w/ plate	7	sets	/sets		
6	ACU outlet w/ plate	4	set	/set		
7	2-Gang Switch w/ plate	8	sets	/sets		
8	Utility Box	1	pc	/pc		
9	1-Gang Switch w/ plate	2	set	/set		
10	3-Gang Switch w/ plate	2	set	/set		
11	1-Gang Range Outlet w/ plate	1	set	/set		
12	3.5mm ² THHN Wire	50	mtrs	/mtrs		
13	20mm PVC Conduits and Fittings	20	pcs	/pcs		
14	Electrical Tape	3	pcs	/pcs		
15	Junction Box	3	pcs	/pcs		
16	Center Main Panel Box (10 Holes, 2 Poles, Bolt-On)	1	pcs	/pcs		
17	100 A, Circuit Breaker, 2P Bolt-on	1	pcs	/pcs		
18	20 A Circuit Breaker, 2P Bolt-on	8	pcs	/pcs		
19	15 A Circuit Breaker, 2P Bolt-on	2	pcs	/pcs		
20	2.0mm ² THHN Wire	50	mtrs	/mtrs		
21	5.5mm ² THHN Wire	1	roll	/roll		
MATERIAL COST						
b.	EQUIPMENT	QUANTITY		UNIT COST	AMOUNT	
1	Scaffoldings - 2 sets	5	days	/days		
EQUIPMENT COST						
c.	no. of manpower	LABOR	NO. OF DAYS		UNIT COST	AMOUNT
1	1	Foreman	5	days	/days	
2	1	Electrician	5	days	/days	
3	1	Common Laborer	5	days	/days	
LABOR COST						



TOTAL DIRECT COST

B. INDIRECT COST

1. OCM(Overhead, Contingencies, Miscellaneous)			
2. CONTRACTORS PROFIT			
		TOTAL MARK-UP	

3. Value Added Tax, VAT (OCM + Contractor's Profit + Direct Cost)	5%		
---	----	--	--

TOTAL INDIRECT COST

C. TOTAL COST

1. DIRECT COST + INDIRECT COST	
--------------------------------	--

TOTAL UNIT COST



IX. OCCUPATIONAL HEALTH AND SAFETY PROGRAM

/ 1 lot

A. DIRECT COST

a.	MATERIALS	QUANTITY	UNIT COST	AMOUNT
1				
MATERIAL COST				

b.	EQUIPMENT	QUANTITY	UNIT COST	AMOUNT
1	PPE (Safety Vest, Safety Shoes, Gloves)	7 pcs	/pcs	
EQUIPMENT COST				

c.	no. of manpower	LABOR	NO. OF DAYS	UNIT COST	AMOUNT
1	1	Safety Officer	6 days	/days	
2					
3					
LABOR COST					

TOTAL DIRECT COST

B. INDIRECT COST

1.	OCM(Overhead, Contingencies, Miscellaneous)			
2.	CONTRACTORS PROFIT			
			TOTAL MARK-UP	

3.	Value Added Tax, VAT (OCM + Contractor's Profit + Direct Cost)	5%		
----	--	----	--	--

TOTAL INDIRECT COST

C. TOTAL COST

1.	DIRECT COST + INDIRECT COST	
----	------------------------------------	--

TOTAL UNIT COST



GENERAL SPECIFICATIONS

I. INTRODUCTION

The works to be accomplished by the successful bidder shall consist of furnishing, supervision of labour, materials, tools and equipment to complete the Scope of Works for the project: **Rehabilitation/Improvement of Staff House at Laoag Airport**. The details of work are best enumerated below; however, it is understood that the contract includes all works and services though not specifically mentioned herein, but are needed to fully complete the project shall be undertaken by the contractor.

All Scope of works must be according to plans and specifications. The Quality and types of materials must conform to the specifications and must be approved first by the Engineer-In-Charge assigned by CAAP-LIA.

II. STATEMENT OF WORK

A. Scope of Work

- i. The Scope of Work includes the furnishing of all necessary labour, equipment, tools, materials, supplies, supervision, and expertise necessary to perform the following.
 1. **Project Billboard** - The work includes the preparation and construction of project tarpaulin with frame. The design and format of the tarpaulin shall have the following specifications:
 - a. white, 8ft by 8ft in size
 - b. Resolution: 70 dpi
 - c. Font: Helvetica
 - d. Font Size: Main Information -3"; Sub-Information -1"
 - e. Font Colour: Black
 2. **Site Works** - The work includes all materials, labour, equipment and performance for Site Works. This includes the surface levelling, embankment of gravel and demolition of old concrete pavement in front of staff house. Also included is the removal of 3 spans of cyclone fence in front of the staff house. (Volume: 16.5 cu. m)
 3. **Concrete Works** - The work includes all materials, labour, equipment and performance to complete the concreting of the components of the garage such as footings, columns and pavements as indicated in the plans and drawings. (Materials used and Workmanship must be approved by the Project In-Charge). (Volume: 12.1 cu. m)



4. **Ceiling Works** – The work includes all materials, labour, equipment and performance for ceiling works. The contractor/provider shall undertake the removal of existing ceiling of the staff house and installation of new ceiling as indicated in the plans and drawings. (Materials used and Workmanship must be approved by the Project In-Charge). (Quantity: 143 sq. m)
5. **Roofing Works** – The work includes all materials, labour, equipment and performance to complete the construction of roofing for the garage as indicated in the plans and drawings. (Materials used and Workmanship must be approved by the Project In-Charge). (Quantity: 147 sq. m)
6. **Painting Works** – The work includes all materials, labour, equipment and performance for painting works. The work includes the proper cleaning of surfaces before applying primers and the final coating. Proper cleaning includes sanding the surfaces and removing dust particles using rags. Also applying Finishes and Top coats must be applied adequately. The areas to be painted are columns, walls, doors and ceiling (newly installed) of the staff house. Also, the columns of the garage. (Materials used and Workmanship must be Approved by the Project In-Charge Assigned). (Quantity: 671 sq. m)
7. **Windows** – The work includes all materials, labour, equipment and performance necessary for the removal of existing old steel windows located at the staff house, and fabrication and installation of windows for the staff house. Specifications and Sized are indicated in the plans and drawings. (Materials used and Workmanship must be Approved by the Project In-Charge Assigned). (Quantity: 26 sq. m)
8. **Electrical Works** – The work includes all materials, labour, equipment and performance for the Electrical Works. This includes installation of lighting, convenience outlets, wires and panel. (Materials used and Workmanship must be Approved by the Project In-Charge Assigned).
9. **Other General Requirements** – Occupational Health and Safety Program.

B. Work Schedule

The Contractor shall provide the necessary manpower, tools, equipment, materials and supplies to insure timely accomplishment and delivery. Depending on the work, the contractor can flexibly up-size or down size its manpower, equipment, materials, etc. with the ultimate objective of delivering satisfactory on time result and performance.

1. Working Time

- Work is done regularly at daytime. The working time is eight (8) hours a day, six days a week including holiday.



- At Special Cases, works can be done at night after the operation of the airport. Working time can be within 10pm – 6am.

2. Work Method

- Work methodology will be formulated by the contractor and CAAP-LIA authorities prior to implementation of the contract.

C. Man Power Schedule

The Minimum manpower required during contract implementation shall be:

Civil Engineer/Safety Officer	2years supervisory experience with safety training certificate
Foreman	--
Skilled Worker	--
Laborer	--

The contractor shall provide the necessary manpower to properly accomplish all necessary related works. The contractor shall designate a competent representative who shall be available at the area to oversee working operation being carried out and to receive instructions from the Airport officials. The contractor's authorized representative shall be responsible for the overall management and coordination of work to be performed as contract provisions and shall act as central point with the government agency. The contractor's authorized representative shall have full authority to act thereat in behalf of the contractor's name while in the premises.

i. Identification

1. The Contractor's personnel shall be recognizable while in airport premises. This will be accomplished by the used of uniforms and printed with the company's name of the contractor. All expenses for uniforms and badges shall be borne by the contractor. All contractor's personnel shall always be in uniform.

D. Equipment, Tools and Consumables required to be used for the project

1. Demolition Hammer
2. Scaffoldings
3. Cut-off Machine
4. Welding Machine
5. One-Bagger Mixer
6. Dump truck

The Contractor shall provide the required number of equipment, tools and consumables to accomplish all necessary works provided in the contract.



The contractor's equipment provided therein shall be used exclusively for the contracted services.

The use of other kind of equipment other than that stated thereof will not be permitted, unless otherwise approved by the authority. Any delay caused, by stoppage of work being authorized by the office concerned will not be taken against the contractor.

E. Service Vehicle

The Contractor shall make available, during the performance of the contract, at least one (1) service vehicle with good condition, for use by the airport authority's representative/engineers for the purpose of inspection, monitoring, measuring, laboratory testing and other activities relative to the implementation of the project.

F. Handheld radios

If project location is within the Restricted Area of the Airport, the contractor is required to have at least one (1) Hand Held Radio for Proper Coordination with Control Tower or any personnel involved in the flight operation under CAAP.

G. Period of Implementation

The contract shall be implemented within the FY2024. Provided that the contractor will only proceed upon written notice from the duly authorized representative of the Authority to commence with the project, which notice must not be less than seven (7) days from the start date.

H. Guidelines

The contractor shall always establish a complete quality control program to adhere with the following requirements while carrying out his function and responsibilities during the implementation of the contract.

i. Quality Assurance and Corresponding Penalties

The Contractor shall establish a system of quality control program to assure that the requirements of the contract are provided as specified. One copy of the contractor's quality control program shall be submitted to the Authority prior to start of the contracted services. An updated copy must be provided as changes occur. The program shall include but not limited to the following.

- An inspection system, covering all the services to be performed under the contract. This must specify areas to be inspected on either a scheduled or unscheduled basis or such personnel who will perform the inspection.
- A method for identifying deficiencies in the quality of services rendered, before the level of performance becomes unacceptable



Republic of the Philippines
CIVIL AVIATION AUTHORITY OF THE PHILIPPINES

- Contractor shall provide the following uniform to all its employees:
 - A shirt with a contractor's logo/name with pants of any color or any equivalent uniform acceptable to CAAP-LIA.
 - A penalty amounting to Fifty Pesos (P 50.00) per day per person shall be imposed on personnel who are not in prescribed uniform while on duty.

ii. Safety and Security Measures

The Contractor shall adhere to all standards and recommended practices stipulated by the airport authority and shall, under no circumstances, violate standard rules and regulations.

- The Contractor and his employees shall always comply with the security and safety requirements imposed by the management while in the airport premises.
- The Contractor is hereby instructed that aircraft operations and movements and the safety thereof, shall always take precedence over any operation.

In case of within the restricted area, a presence of authorized handheld radio operator is assigned and shall obtain clearance from the Control Tower from time to time for thorough safety.

- The Contractor shall, always keep paved surfaces such as runways, taxiways and hard stands free from hazardous materials.


Prepared:

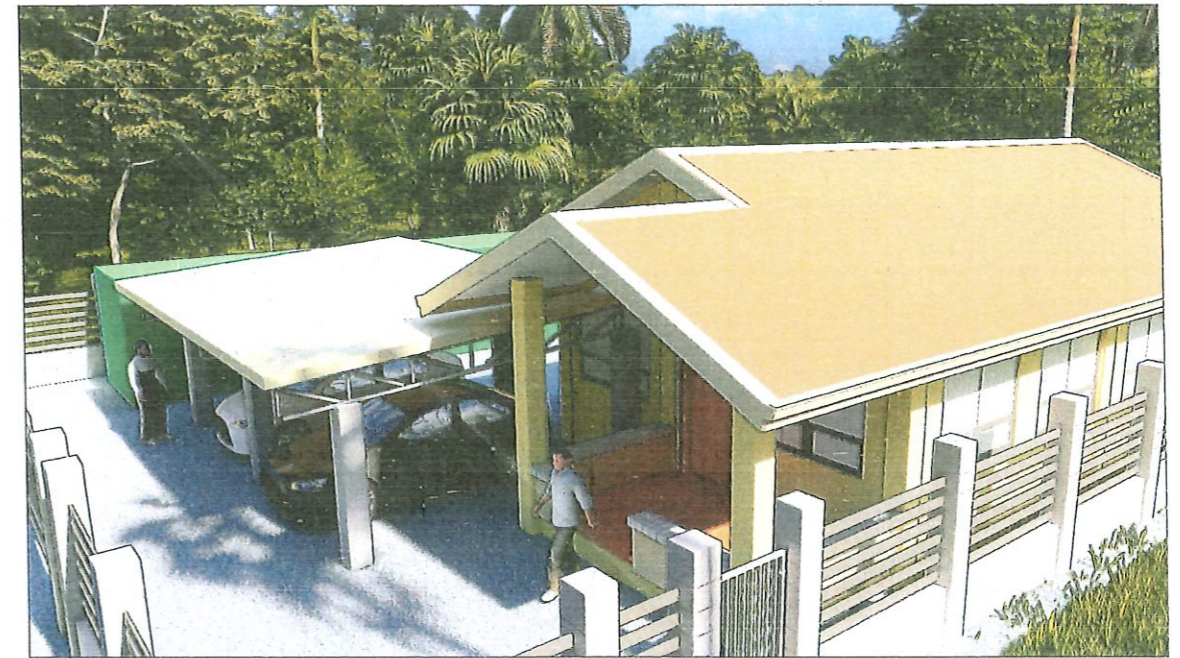

JUNAR R. TOMAS
Firefighter I

Checked/Verified:

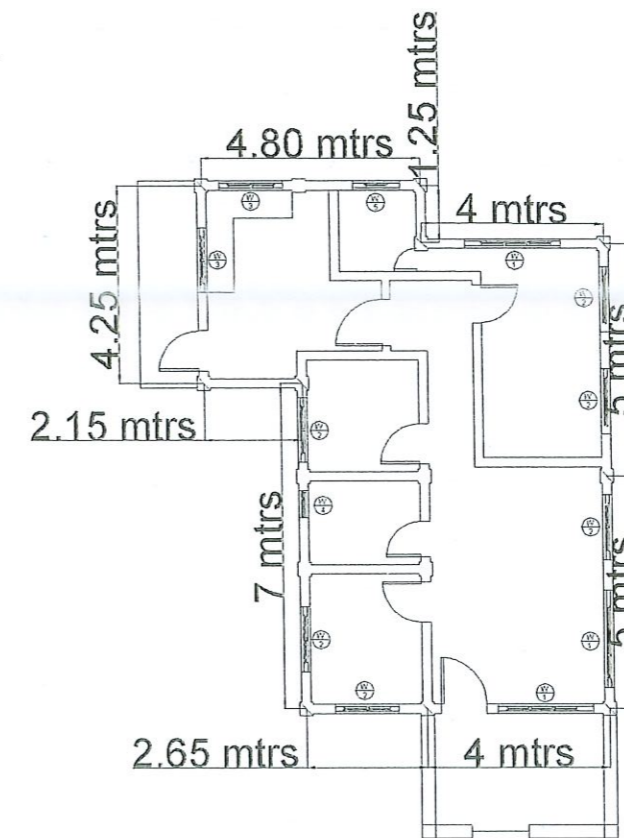

JOEFFREY B. LAGADON
Engineer II, FIC-BGM

Approved:

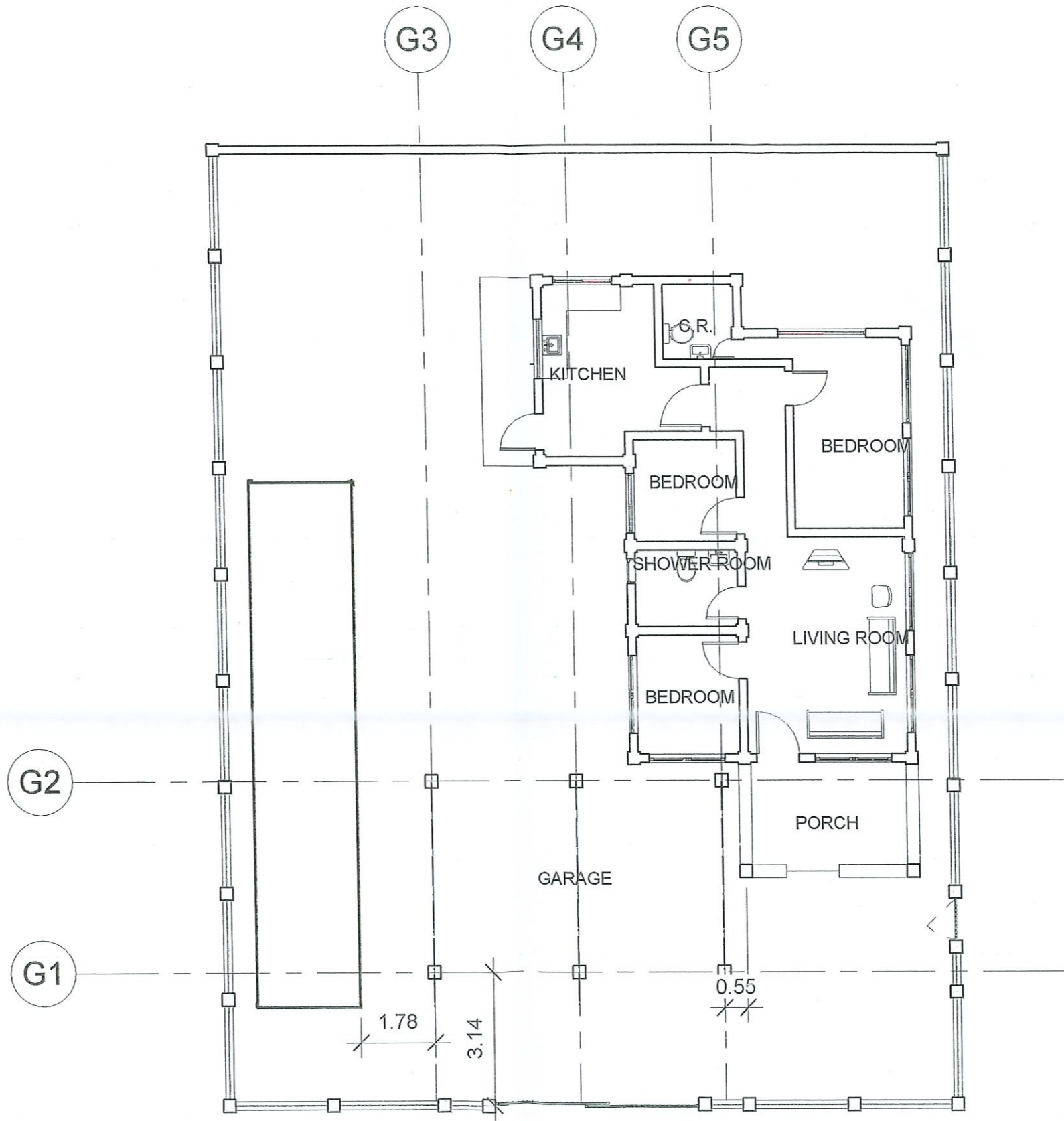

RONALD M. ESTABILLO
Civil Aviation Area Manager, Area I
Head, Area Cluster I




⊕ PERSPECTIVE

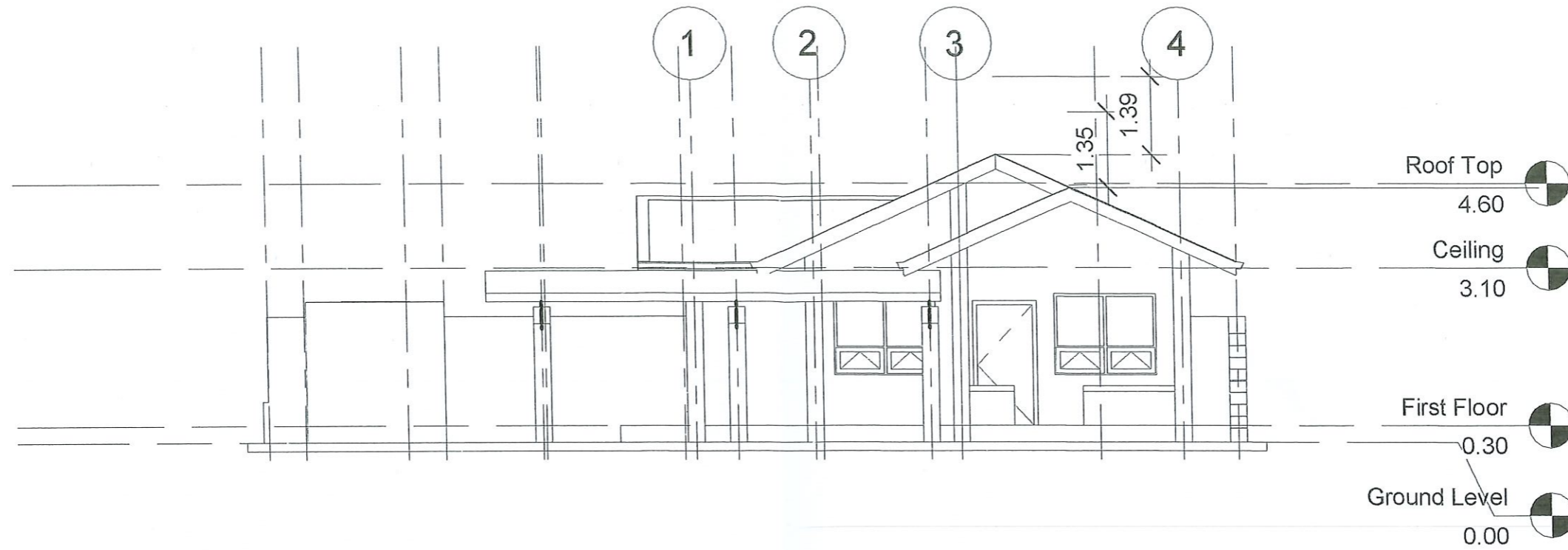


⊕ STAFFHOUSE FLOOR PLAN

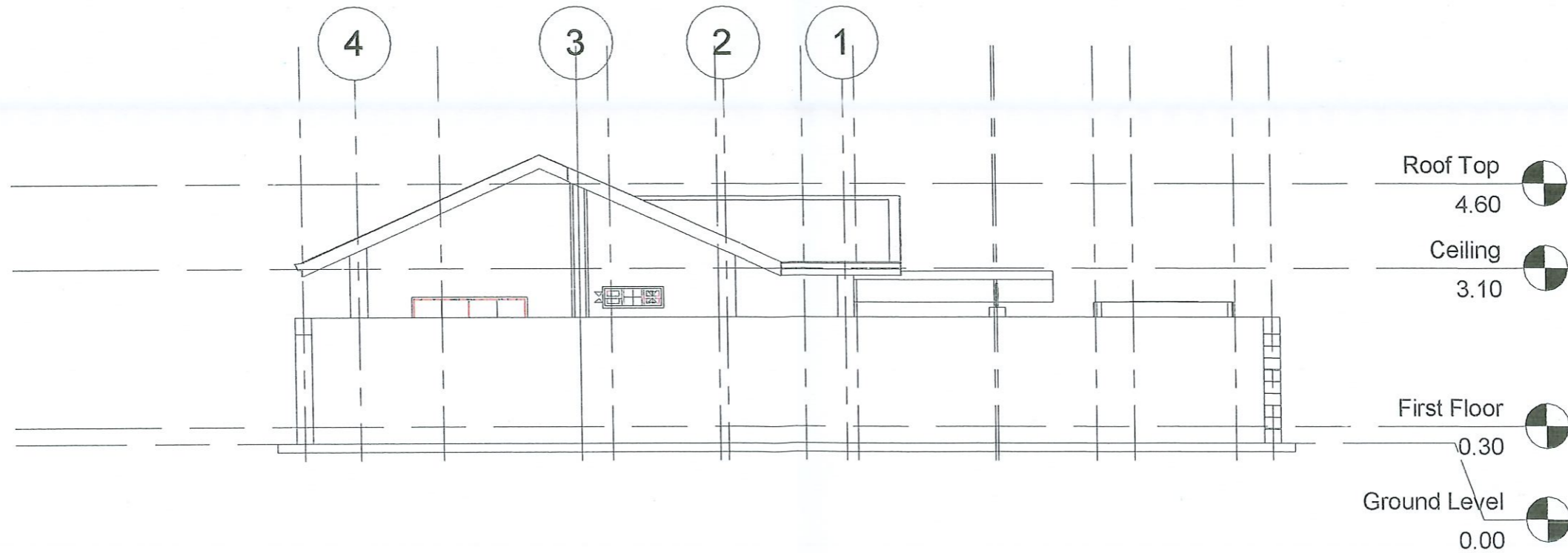


1 Staff House
1 : 120

 REPUBLIC OF THE PHILIPPINES CIVIL AVIATION AUTHORITY OF THE PHILIPPINES	PREPARED: <i>JUNAR R. TOMAS</i> Admin Support Staff CHECKED/VERIFIED: <i>JOEFFREY B. MAGADON</i> Engineer II, PIC-BGM	PROJECT TITLE: Rehabilitation/ Improvement of Staff House at Laoag Airport LOCATION: Laoag International Airport	APPROVED: <i>Ronald V. Estabillo</i> RONALD V. ESTABILLO Civil Aviation Area Manager, Area I Head, Area Cluster I	SCALE: 1 : 120 CONTENT: A109 Unnamed 2
--	--	---	---	---



1 NORTH ELEVATION
1 : 100



2 SOUTH ELEVATION
1 : 100



REPUBLIC OF THE PHILIPPINES

CIVIL AVIATION AUTHORITY OF THE PHILIPPINES

PREPARED:

Junar R. Tomas
JUNAR R. TOMAS
Admin Support Staff

CHECKED/VERIFIED:

Joeffrey D. Lagadon
JOEFFREY D. LAGADON
Engineer II, FIC-BGM

PROJECT TITLE:

**Rehabilitation/ Improvement of Staff House
at Laoag Airport**

LOCATION:

Laoag International Airport

APPROVED:

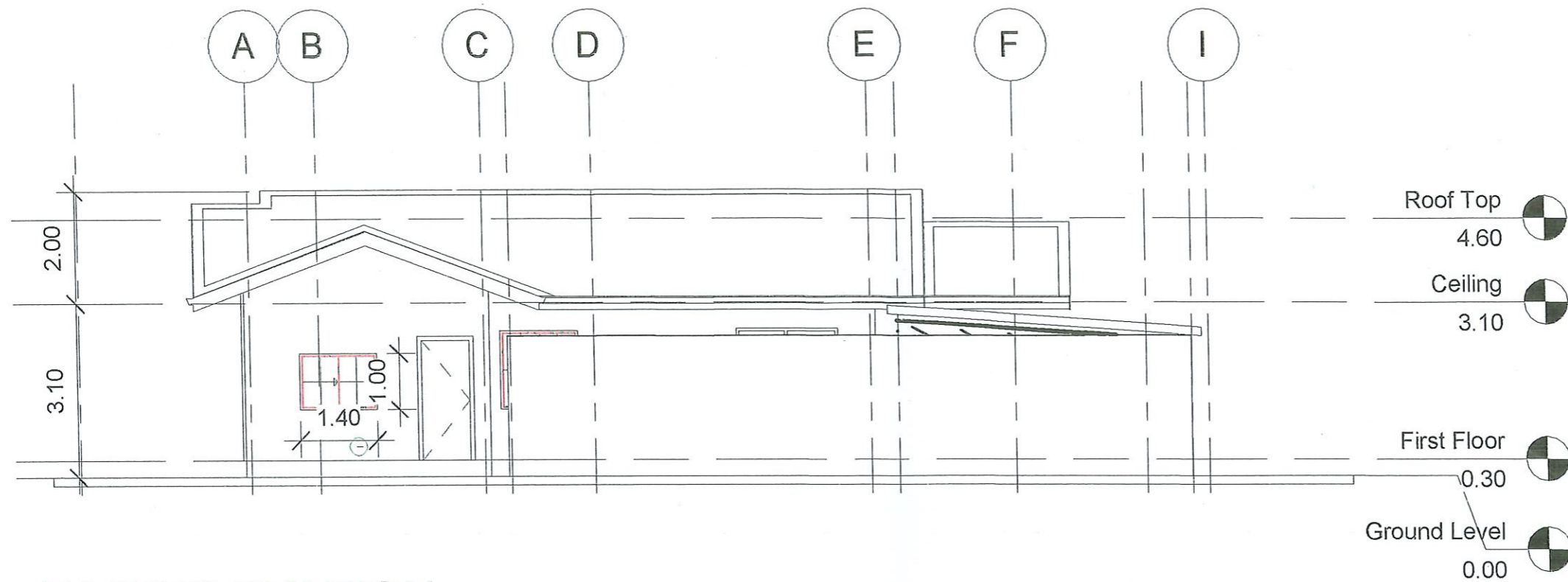
Ronald Y. Estabillo
RONALD Y. ESTABILLO
Civil Aviation Area Manager, Area I
Head, Area Cluster I

SCALE:

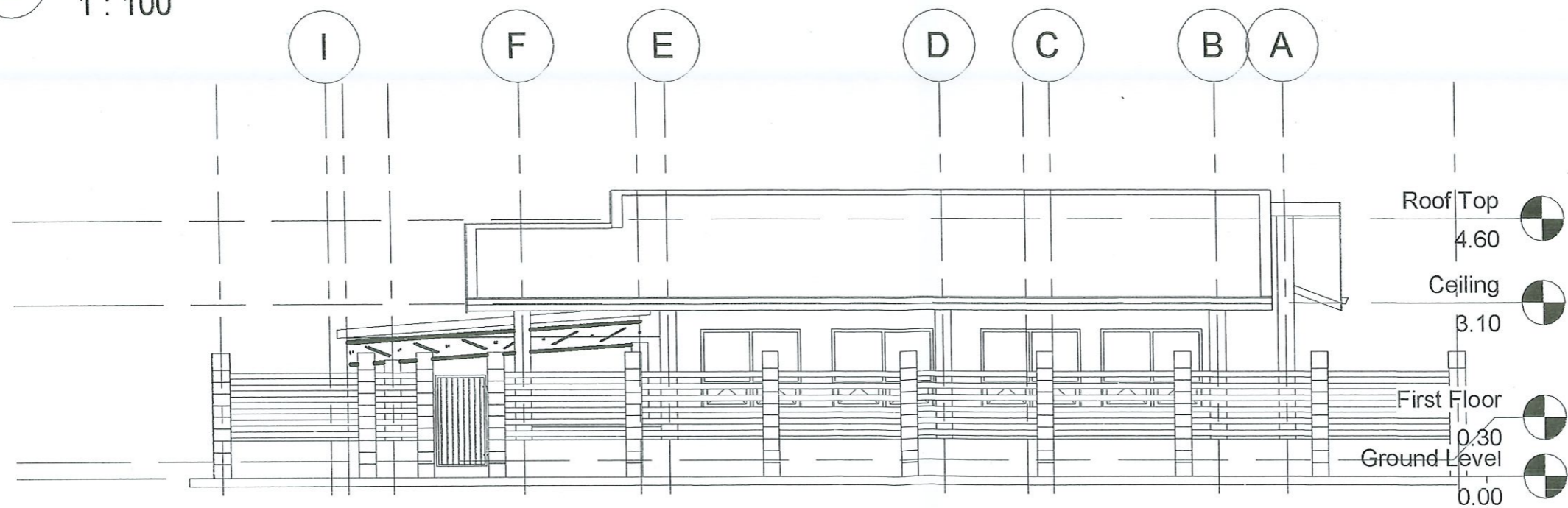
1 : 100

CONTENT:
A107

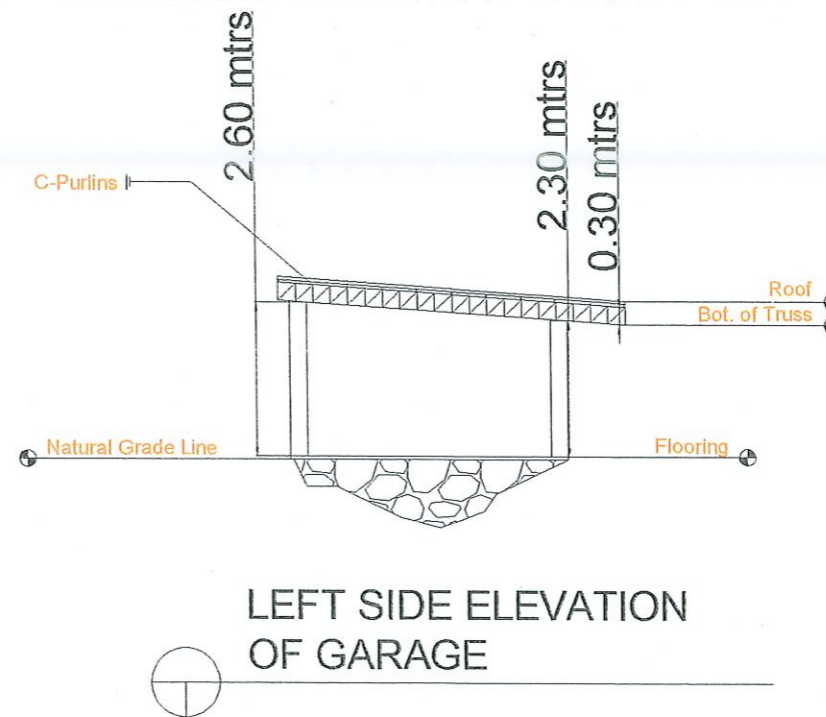
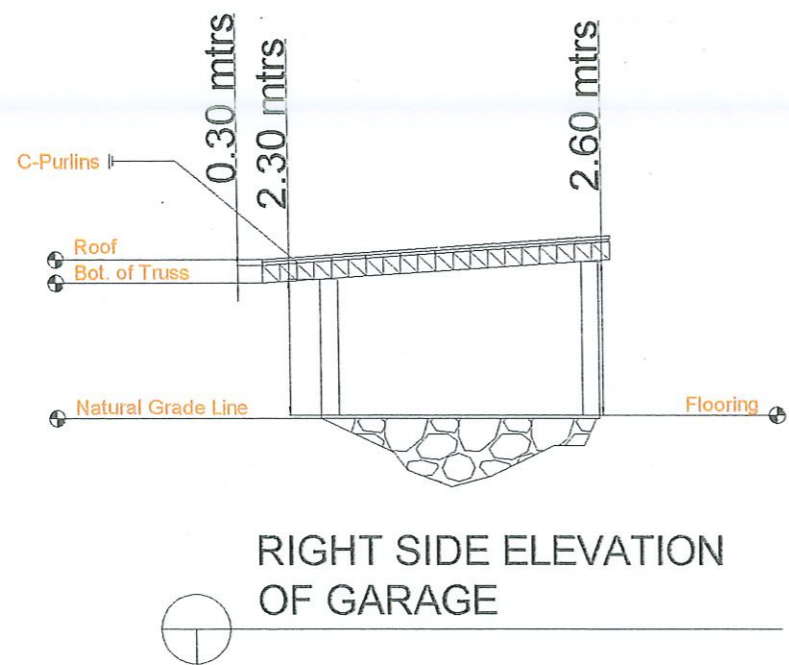
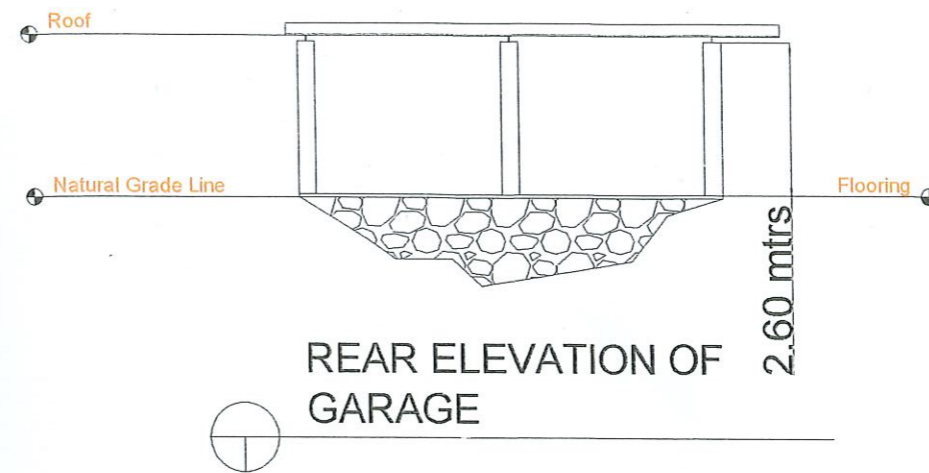
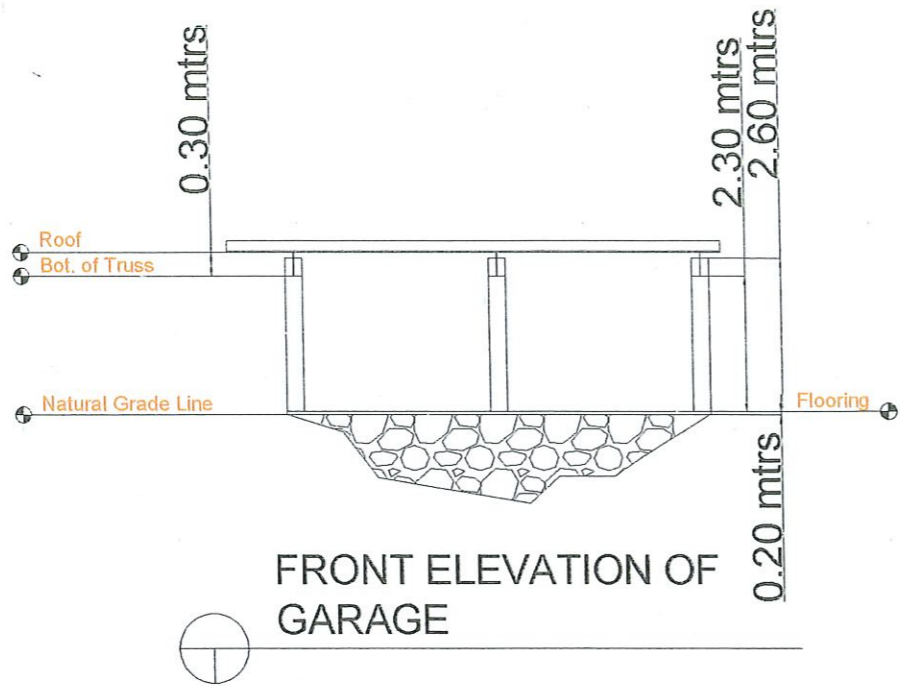
Unnamed



2 EAST ELEVATION
1 : 100



1 WEST ELEVATION
1 : 100



REPUBLIC OF THE PHILIPPINES
CIVIL AVIATION AUTHORITY OF THE PHILIPPINES

PREPARED:

JUNAR B. TOMAS
ADMIN SUPPORT STAFF

CHECKED/VERIFIED:

JOEFFREY B. LAGADON
ENGINEER II

PROJECT TITLE:

REHABILITATION/IMPROVEMENT OF STAFF HOUSE

LOCATION:

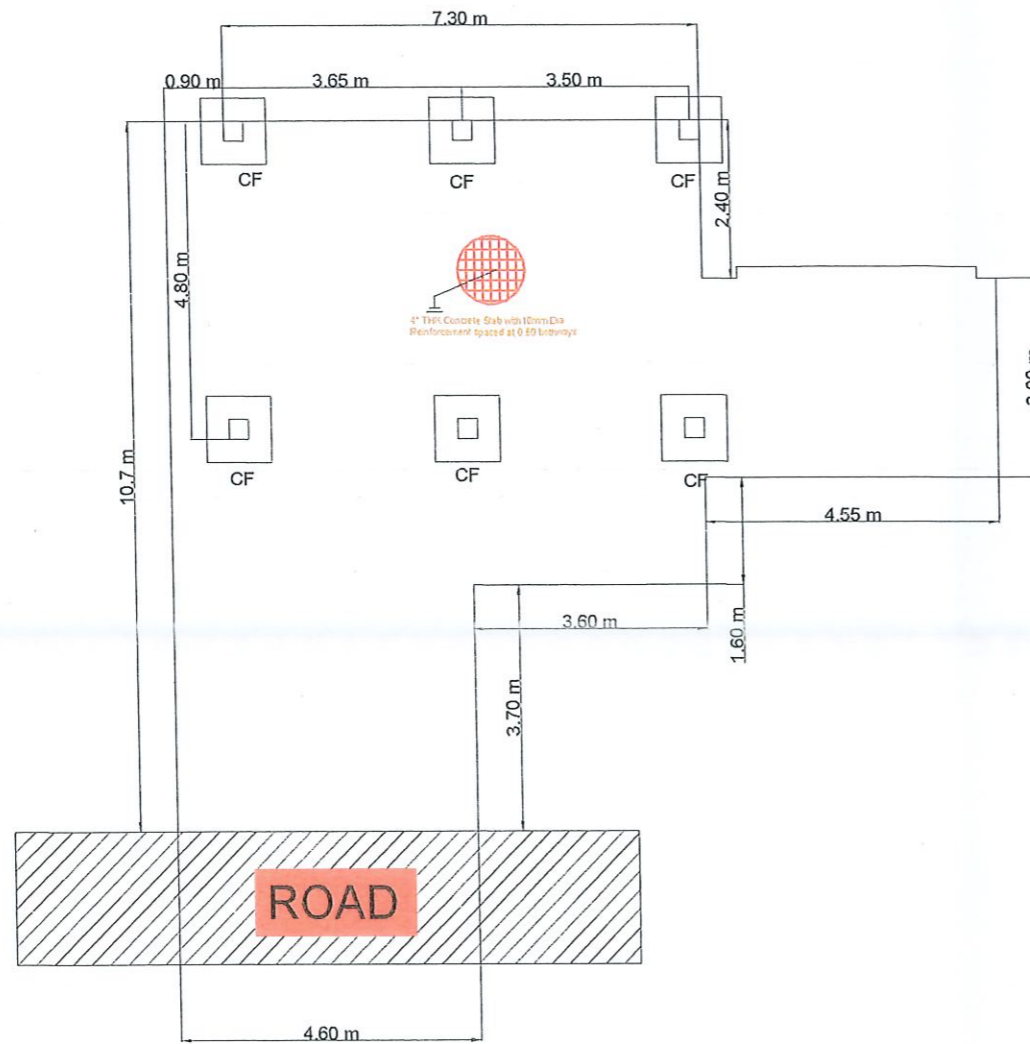
LAOAG INTERNATIONAL AIRPORT

APPROVED:

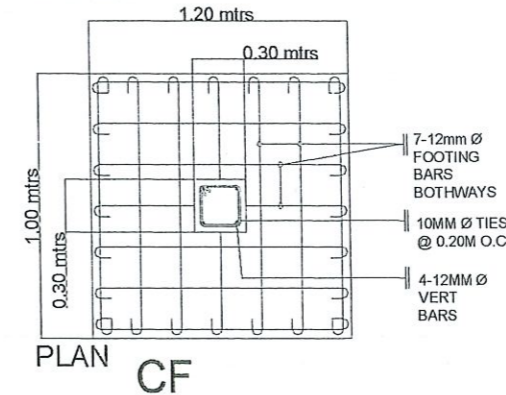
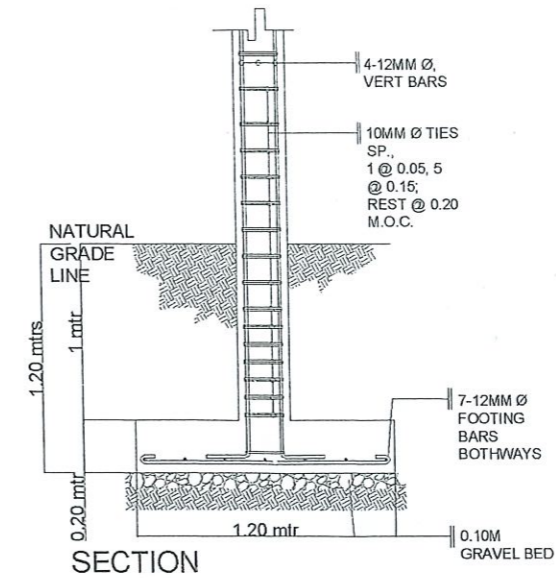
RONALD V. ESTABILLO
CIVIL AVIATION AREA MANAGER, AREA 1

SCALE:
NTS

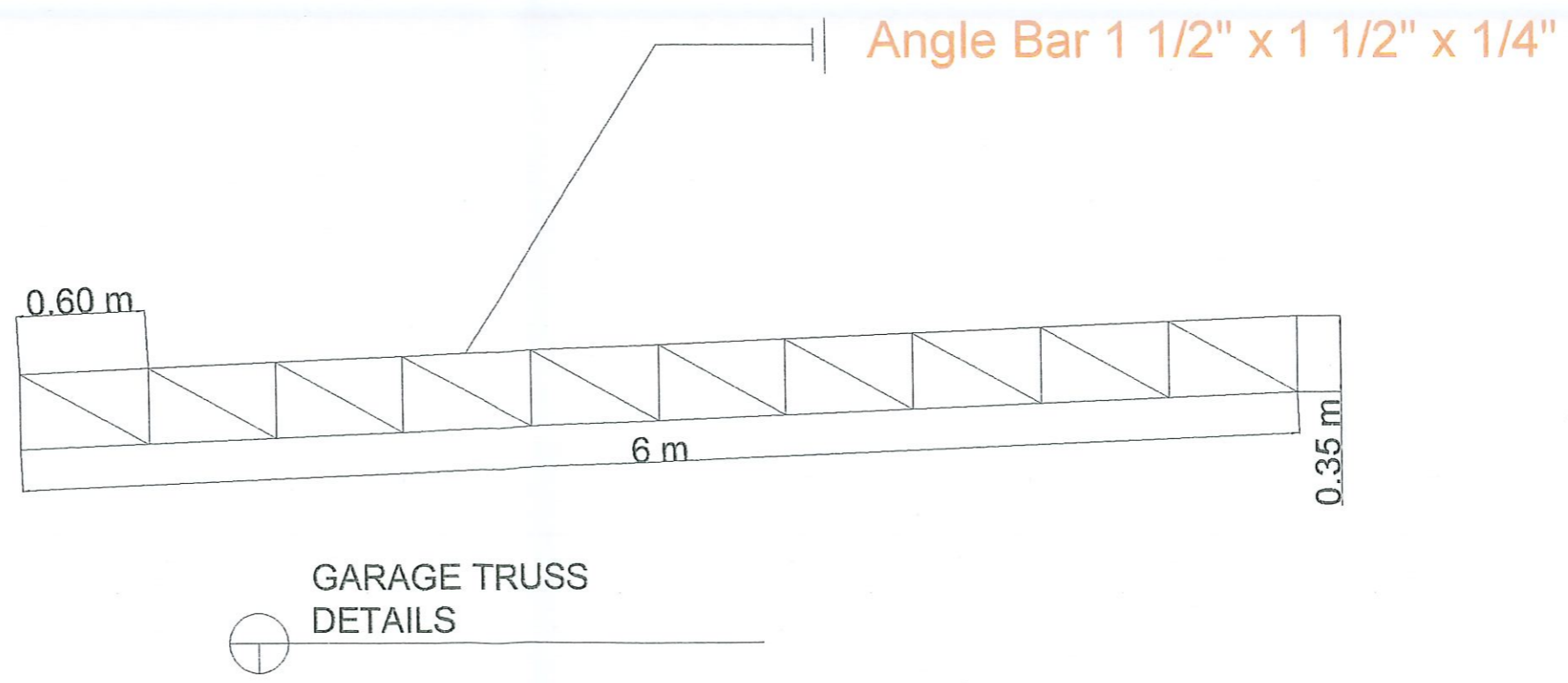
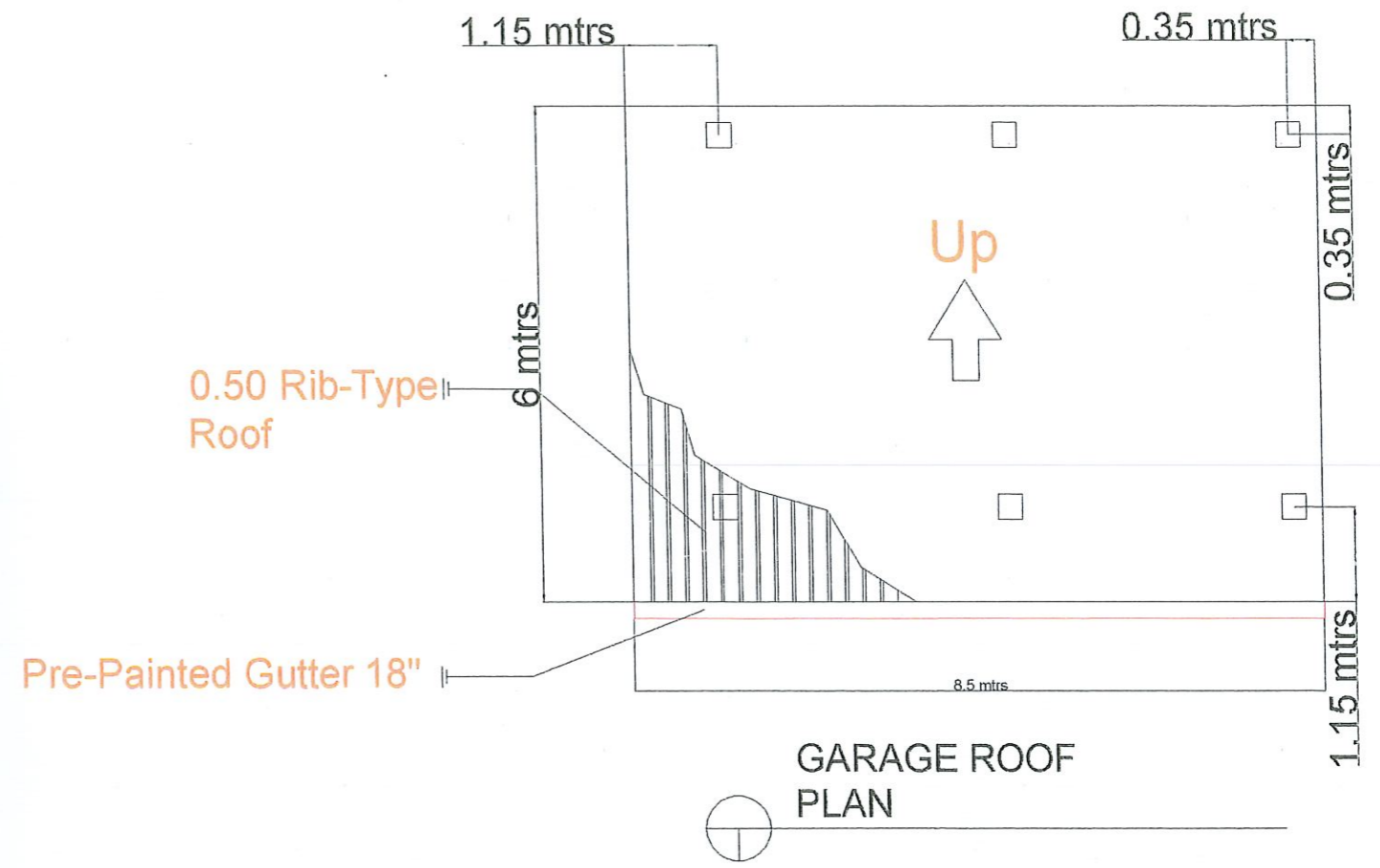
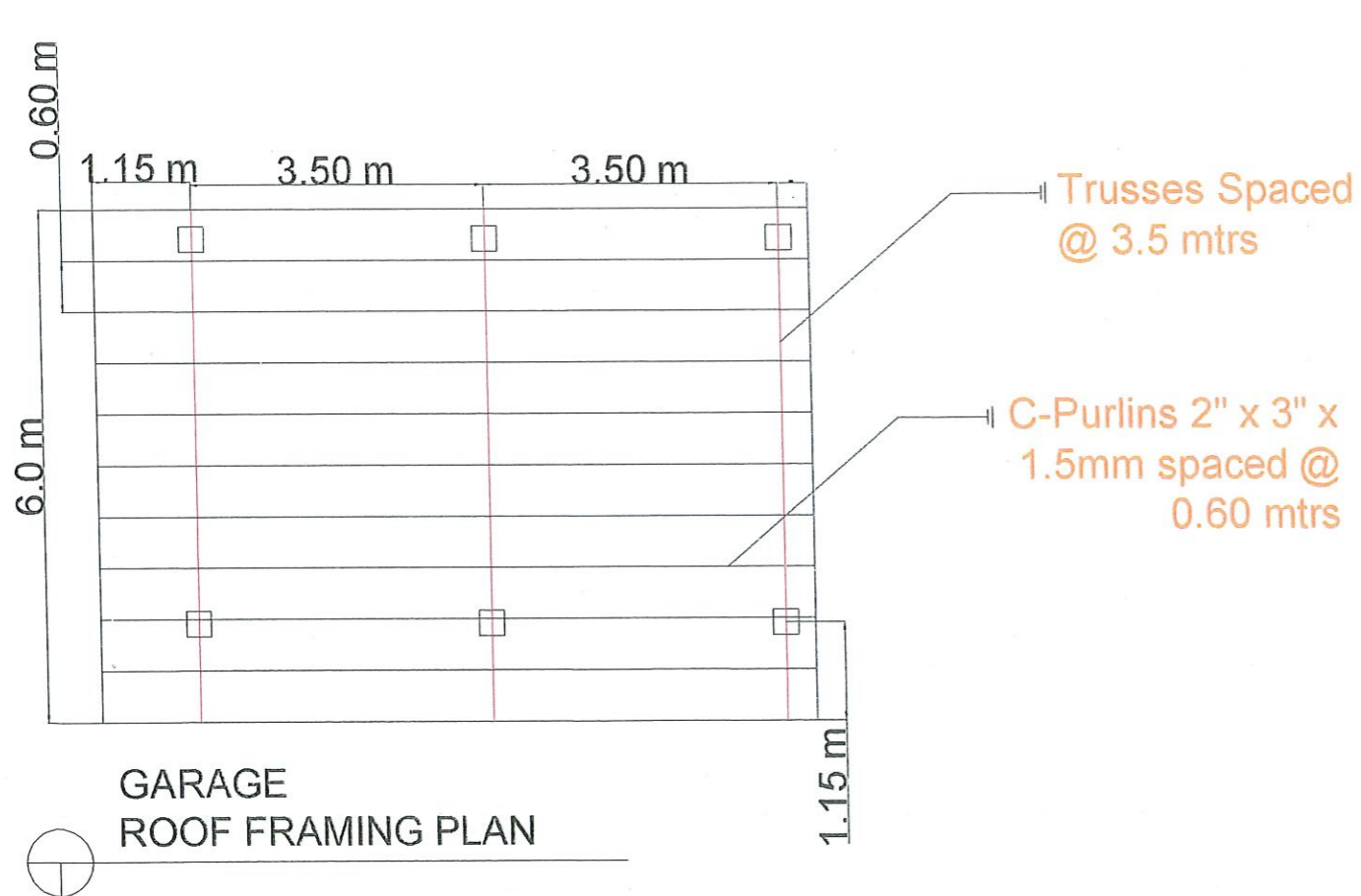
A-2

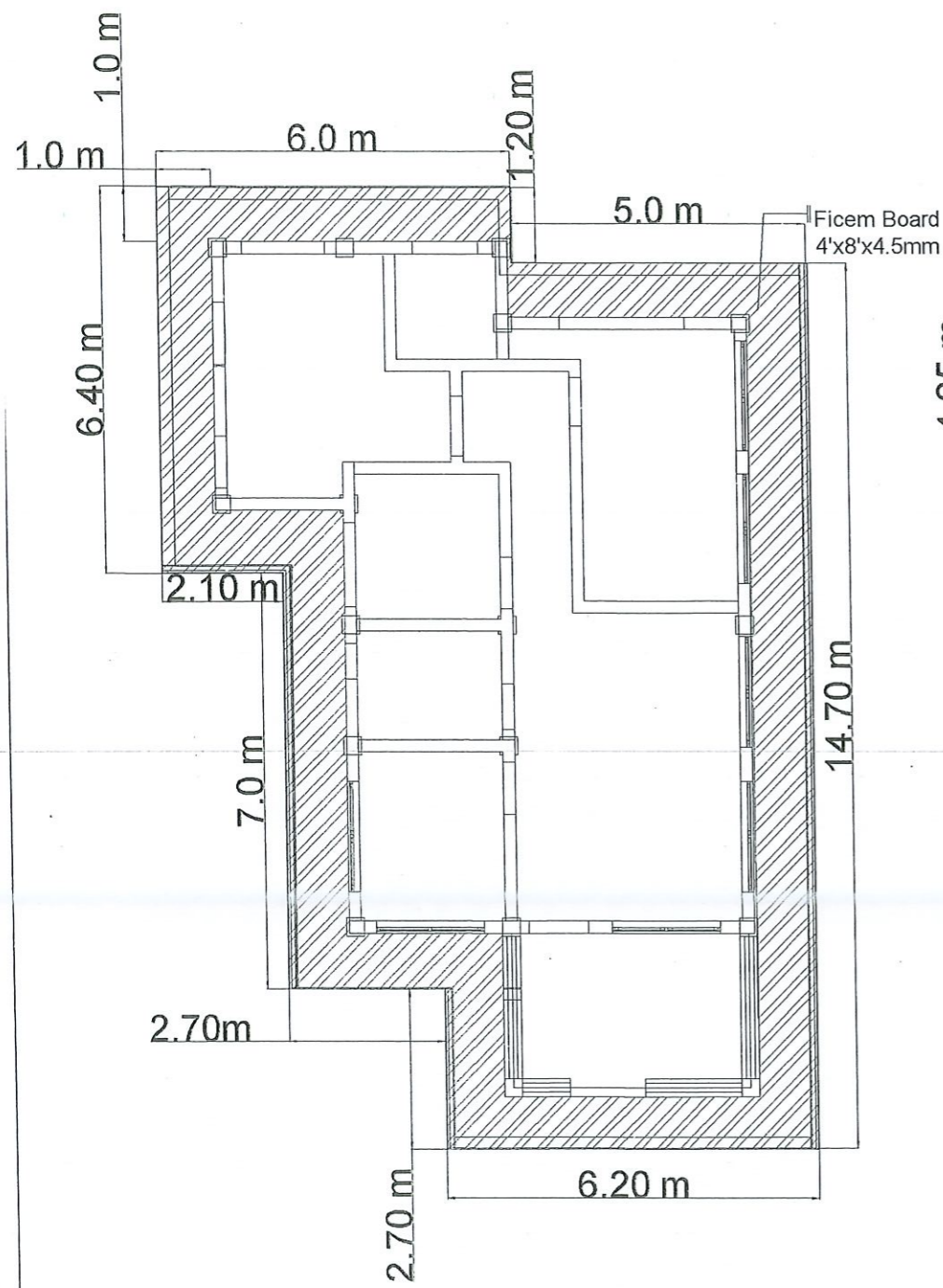


GARAGE FOUNDATION PLAN

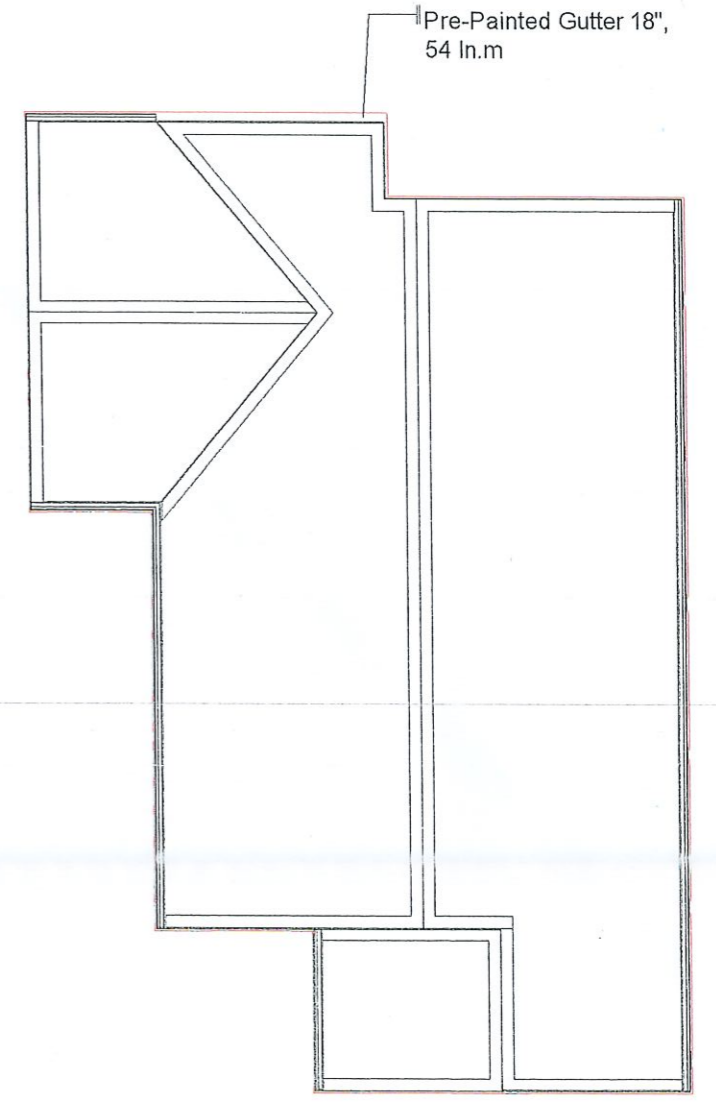
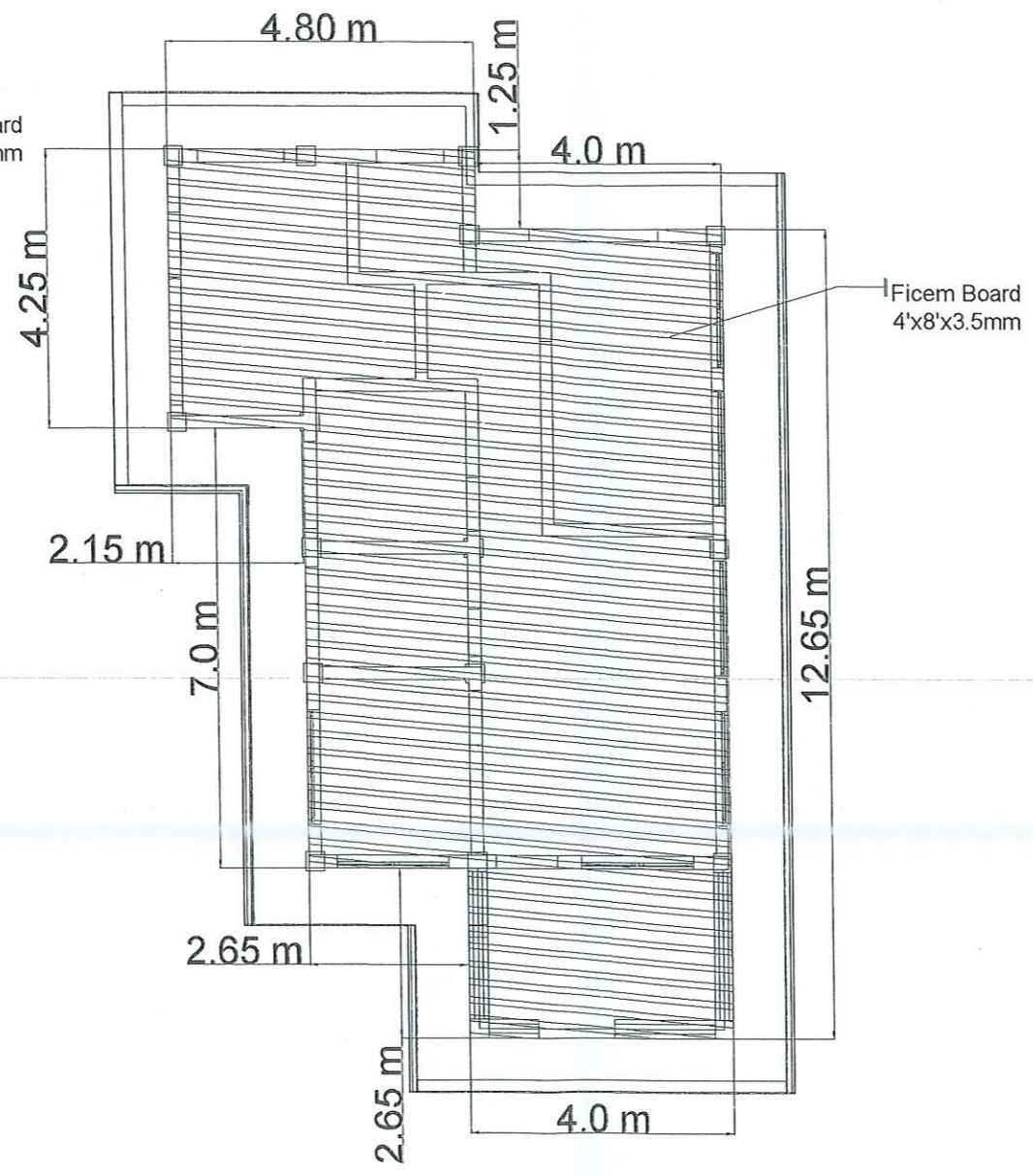


GARAGE COLUMN FOOTING DETAILS





⊙ STAFF HOUSE CEILING



⊙ STAFF HOUSE GUTTER



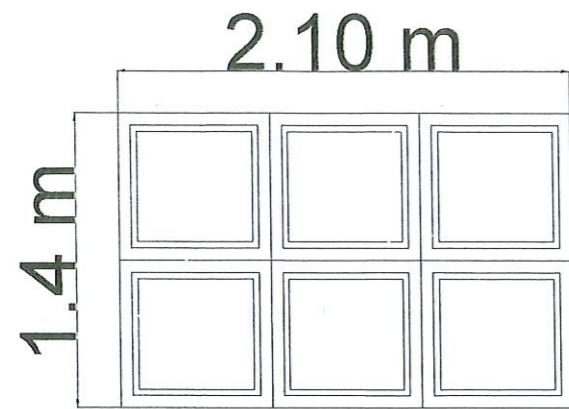
REPUBLIC OF THE PHILIPPINES
CIVIL AVIATION AUTHORITY OF THE PHILIPPINES

PREPARED: **JUNAR R. TOMAS**
ADMIN SUPPORT STAFF
CHECKED/VERIFIED: **JOEFFREY B. LAGADON**
ENGINEER II

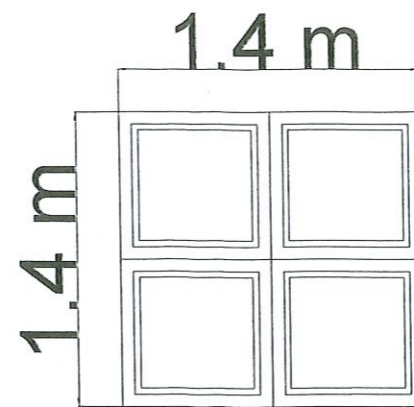
PROJECT TITLE: **REHABILITATION/IMPROVEMENT OF STAFF HOUSE**
LOCATION: **LAOAG INTERNATIONAL AIRPORT**

APPROVED: **RONALDO V. ESTABILLO**
CIVIL AVIATION AREA MANAGER, AREA 1

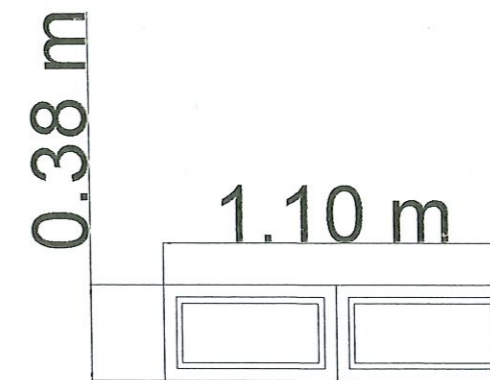
SCALE: **NTS** S-3



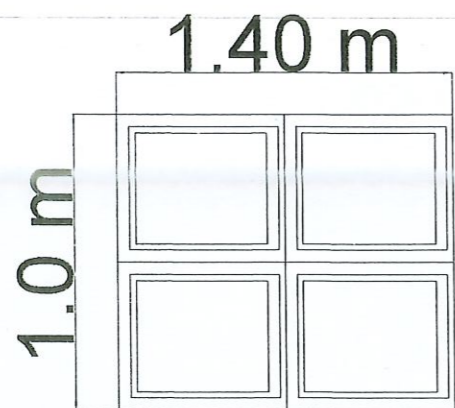
W
1 One-way Mirror Glass
Awning type Window,
white Frame
(4 sets)



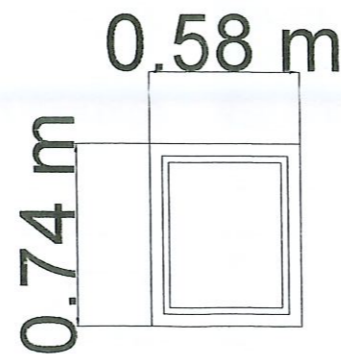
W
2 One-way Mirror Glass
Awning type Window,
white Frame
(5 sets)



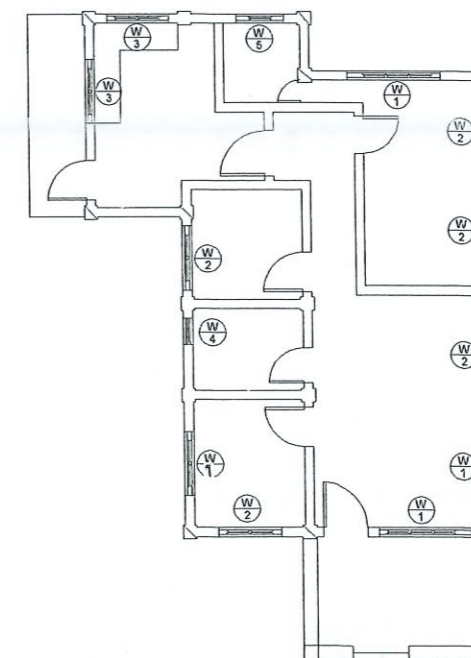
W
5 One-way Mirror Glass
Awning type Window,
white Frame
(1 set)



W
3 One-way Mirror Glass
Awning type Window,
white Frame
(2 sets)



W
4 One-way Mirror Glass
Awning type Window,
white Frame
(1 set)



 **STAFF HOUSE WINDOWS**



PREPARED:

JUNAR R. TOMAS
ADMIN SUPPORT STAFF

CHECKED/VERIFIED:

JOEFFREY B. LAGADON
ENGINEER 1

PROJECT TITLE:

REHABILITATION/IMPROVEMENT OF STAFF
HOUSE

LOCATION:

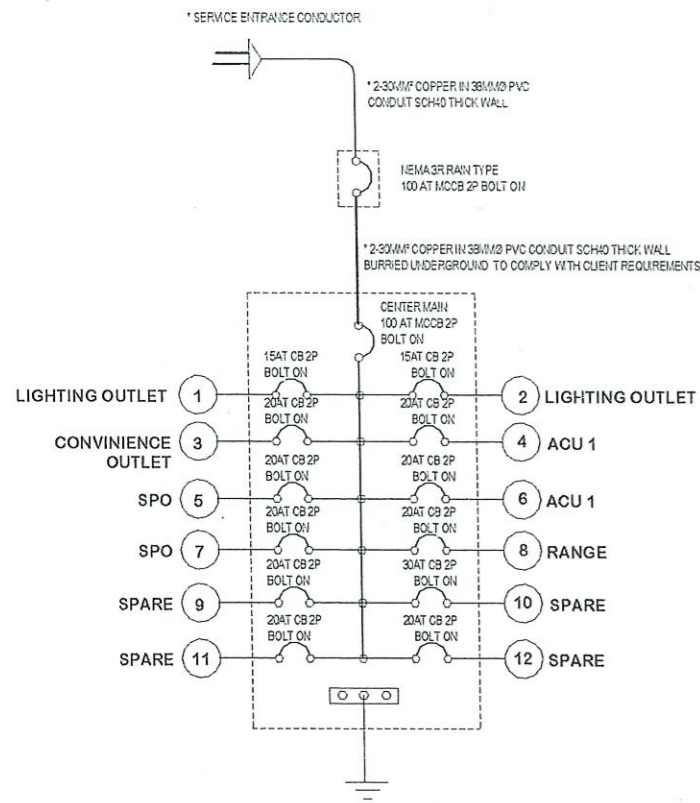
LAOAG INTERNATIONAL AIRPORT

APPROVED:

RONALD V. ESTABILLO
CIVIL AVIATION AREA MANAGER, AREA 1

SCALE:
NTS

S-4



1 SINGLE LINE DIAGRAM
1 : 50

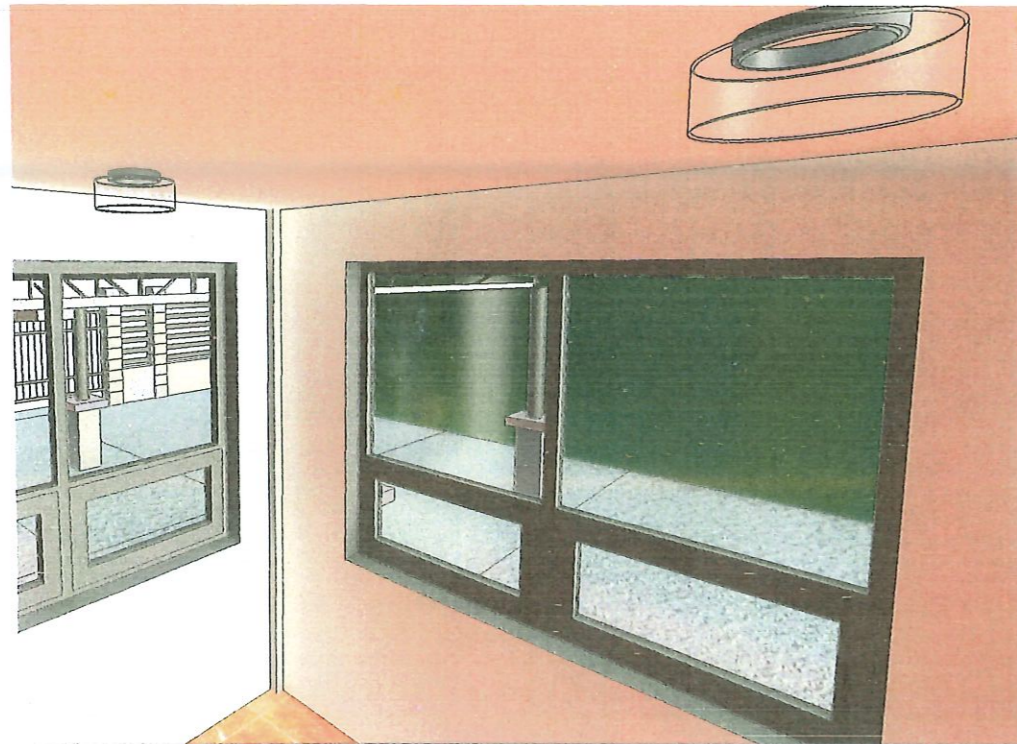
GENERAL NOTES AND SPECIFICATIONS:

1. The type of power service to be used herein shall be 230 volts AC, single phase, 2 wire 60 hz.
2. All electrical installation herein shall be done in accordance with the latest provisions of the latest edition of the philippines electrical code and requirements of the electric cooperative servicing the area.
3. All materials and wire devices to be used herein shall be new and of the approved type for which they are intended.
4. The minimum size of conductor to be used herein shall be 2.0 sq. mm THHN and 3.5 sq. mm THHN for lighting outlet and convenience outlet respectively.
5. The nominal diameter of uPVL or flexible electrical conduit shall be 20mm diameter.
6. All switches shall be installed 1.30m above finish floor level
7. All convenience outlet shall be installed 0.35m above finish floor level.
8. Wether required and necessary pull boxes add junction boxes shall be installed at convenience and in conspicuous locations through such boxes are not shown or indicated in the plan.
9. The electrical works herein shall be done under the direct and immediate supervision of duly license register electrical engineer or registered master electrician.

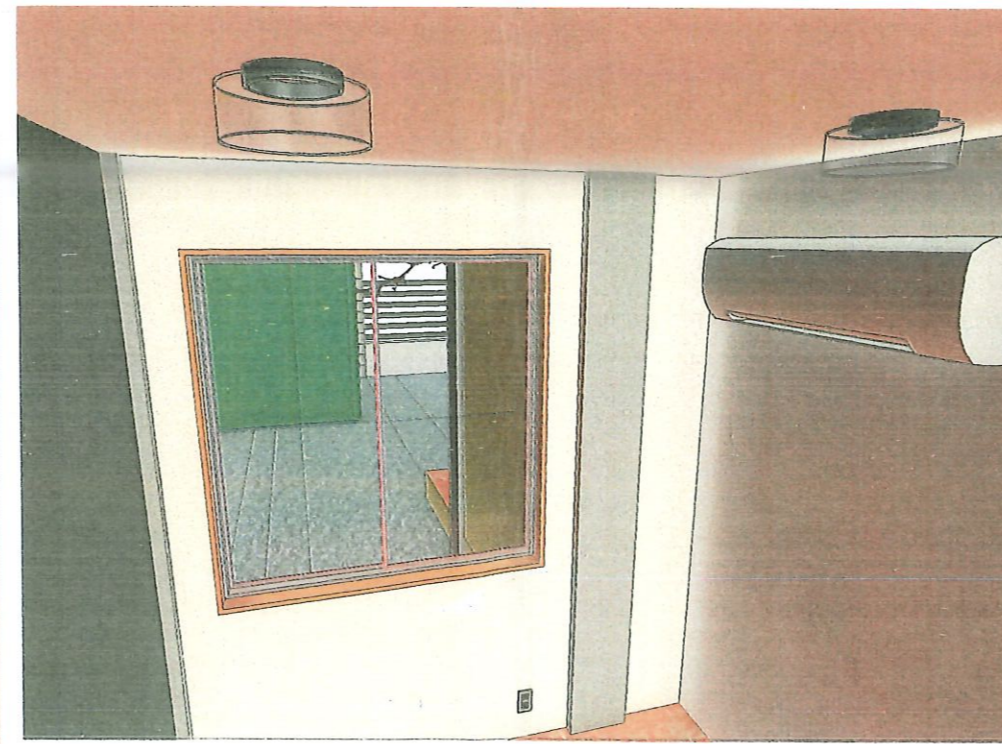
2 ELECTRICAL NOTES
1 : 1

SYMBOL	DESCRIPTION
	SERVICE ENTRANCE
	CIRCUIT BREAKER
	PANEL BOARDS
	KILOWATT HOUR METER
	CIRCUIT HOMERUN(No. Indicates circuit)
	DUPLEX CONVENIENCE OUTLET
	WEATHER PROOF OUTLET
	SINGLE POLE SINGLE THROW SWITCH
	SWITCH IN 2-GANG PLATE
	SWITCH IN 3-GANG PLATE
	THREE WAY SWITCH
	ORDINARY SWITCH LINE
	CONDUIT LINE
	WALL LAMP
	INCANDESCENT LAMP
	CONVENIENCE OUTLET
	ELECTRIC RANGE OUTLET
	ELECTRIC WATER PUMP
	DECORATIVE DOWN LIGHT
	AIRCONDITION UNIT

3 ELECTRICAL SYMBOLS
1 : 50



4 BEDROOM 1



5 BEDROOM 2



6 LIVING ROOM



Republic of the Philippines

Civil Aviation Authority of the Philippines

Prepared by:
ROMUALDO U. BAYANGOS
ELECTRICAL ENGINEER

Checked by:
JOEFFREY B. LAGADON
ENGINEER II - FIC/BGM

Project Title:
Rehabilitation/Improvement of Staff House
Laoag

Project Location:
Laoag International Airport, Brgy 36
Araniw, Laoag City

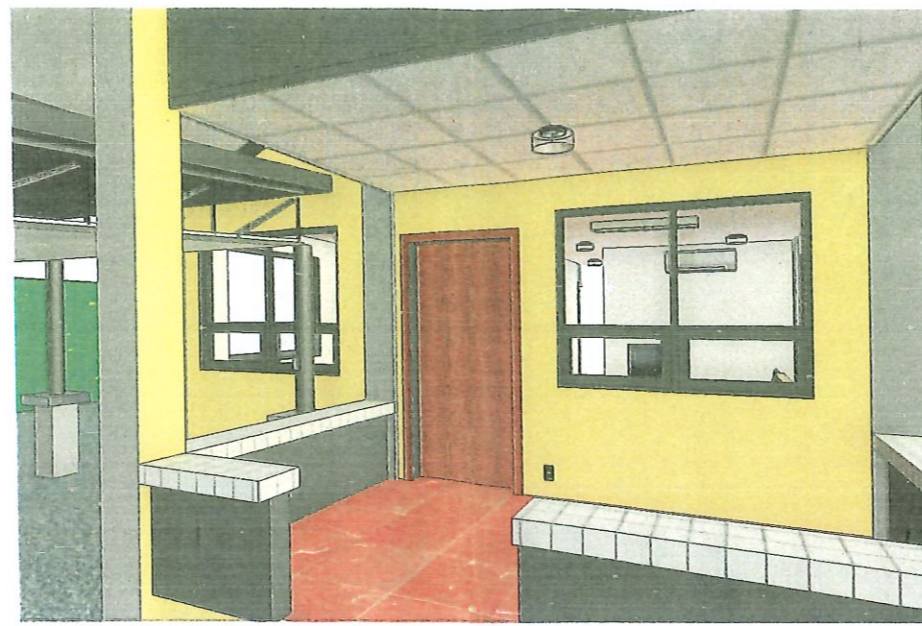
Approved by:

Ronald V. Estabillo
CIVIL AVIATION AREA MANAGER, AREA 1
HEAD, CLUSTER 1 AREA CENTER

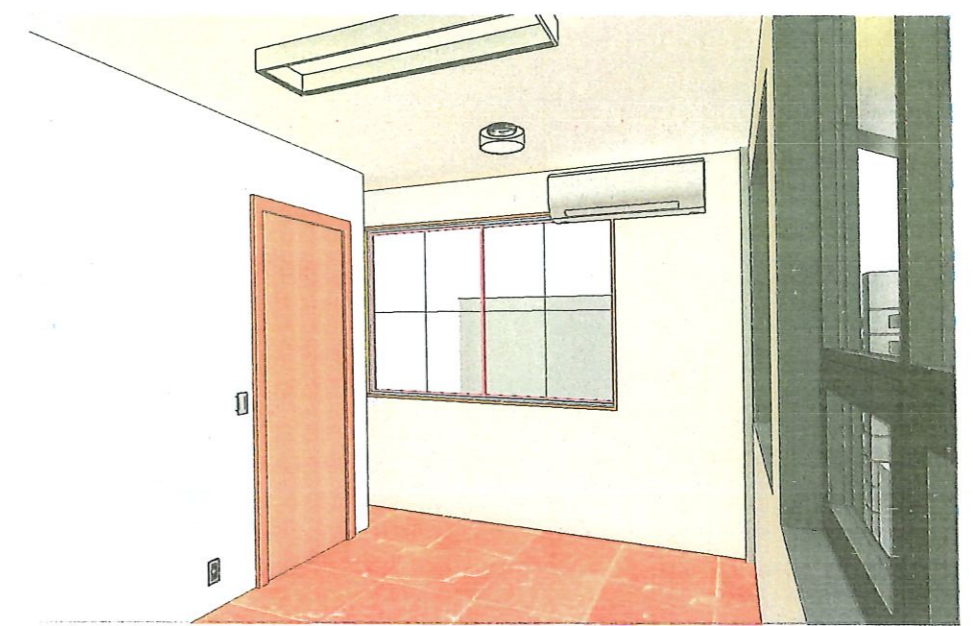
Scale :
As indicated
Electrical Layout
E02



1 KITCHEN AND DINE AREA



2 PORCH



3 BEDROOM 3



2X4FT. Surface Louver Housing 12"X48"
 No. of Lamp 2pcs 1200mm(4ft) T8 Tube
 Light Compatible T8 Tube Light
 Material Metal Sheet Powdercoated
 Reflector Mirrorized Reflector
 Holder G13, Medium Bi-pin
 Mounting Surface Mounted, Applicable for Suspended Mount
 Wiring Connection Double End

E27 LED Bulb 15 Watts Nature White
 Specifications
 REB-15W-NW-018 Specifications
 Wattage 15 Watts
 Luminous Flux 900 lm
 Light Source High bright LED SMD
 Color Temperature 4000 – 5500 K / Nature White
 PC Cover Frosted
 Material PC Cover and Aluminum PCB
 Bulb Holder E27
 Beam Angle 120° Degrees
 Working Voltage AC 85-265V



T8 LED Tube Light 18W 4FT Daylight Plastic
 Wattage 18 Watts
 Luminous Flux 1800 lm
 Light Source LED SMD Chip
 Color Temp 6000 – 6500 K / Day Light
 Beam Angle 120 Degrees
 Material Polycarbonate Housing
 PC Cover Frosted
 Holder Base G13 Medium Bi-pin
 Length 1200 mm
 Wiring Connection Double End
 Working Voltage AC 220-240V 50/60 Hz
 IP Rating IP 40 Indoor

4 LIGHTING DETAILS
 1:10

Branch Panel:

Location: _____
 Supply From: _____
 Mounting: Recessed
 Enclosure: _____

Volts: 230 Single
 Phases: 1
 Wires: 2

A.I.C. Rating: _____
 Mains Type: _____
 Mains Rating: 100 A
 MCB Rating: 100 A

Notes:

CKT	CIRCUIT DESCRIPTION	VOLTAGE	CB RATING	CONNECT ED CURRENT	CONNECTED LOAD	Voltage Drop	Size of Wires and Conduits
1	13 Lighting - Dwelling Unit	230 V	15 A	1.283 A	295 VA	0.287 V	Use 2 - 2.0mm ² THHN Wire in a 20mm ^Ø PVC Conduits thick Wall
2	13 Lighting - Dwelling Unit	230 V	15 A	0.957 A	220 VA	0.280 V	Use 2 - 2.0mm ² THHN Wire in a 20mm ^Ø PVC Conduits thick Wall
3	7 Receptacle	230 V	20 A	5.478 A	1260 VA	0.967 V	Use 2 - 3.5mm ² THHN Wire in a 20mm ^Ø PVC Conduits thick Wall
4	1 Cooling	230 V	20 A	8.000 A	1840 VA	0.836 V	Use 2 - 5.5mm ² THHN Wire in a 20mm ^Ø PVC Conduits thick Wall
5	1 SPO	230 V	20 A	7.826 A	1800 VA	0.966 V	Use 2 - 5.5mm ² THHN Wire in a 20mm ^Ø PVC Conduits thick Wall
6	1 Cooling	230 V	20 A	8.000 A	1840 VA	1.506 V	Use 2 - 5.5mm ² THHN Wire in a 20mm ^Ø PVC Conduits thick Wall
7	1 SPO	230 V	20 A	7.826 A	1800 VA	1.238 V	Use 2 - 5.5mm ² THHN Wire in a 20mm ^Ø PVC Conduits thick Wall
8	1 Heating	230 V	20 A	15.217 A	3500 VA	3.384 V	Use 2 - 5.5mm ² THHN Wire in a 20mm ^Ø PVC Conduits thick Wall
9	1 Spare	230 V	20 A	7.826 A	1800 VA	0.367 V	
10	1 Spare	230 V	20 A	7.826 A	1800 VA	0.351 V	
11							
12							
					Total Load:	16130 VA	
					Total Amps:	70 A	

Legend:

Load Classification	Connected Load	Demand Factor	Estimated Demand	Panel Totals
Appliance - Dwelling Unit	3600 VA	100.00%	3600 VA	
Heating	3500 VA	100.00%	3500 VA	Total Conn. Load: 16130 VA
Lighting - Dwelling Unit	515 VA	100.00%	515 VA	Total Est. Demand: 14869 VA
Receptacle	4940 VA	74.47%	3679 VA	Total Conn. Current: 70 A
Spare	3600 VA	100.00%	3600 VA	Total Est. Demand Current: 65 A

Notes:

5 PANEL BOARD SCHEDULE



Republic of the Philippines
 Civil Aviation Authority of the Philippines

Prepared by: Ronald V. Bayangos
 ELECTRICAL ENGINEER

Checked by: JOEFFREY B. LAGADON
 ENGINEER II - FIC/BGM

Project Title:
 Rehabilitation/Improvement of Staff House
 Laoag

Project Location:
 Laoag International Airport, Brgy 36
 Araniw, Laoag City

Approved by: Ronald V. Estabillo
 CIVIL AVIATION AREA MANAGER, AREA 1
 HEAD, CLUSTER 1 AREA CENTER

Scale :
 1 : 10

Electrical Layout
 E03

Round Recessed Vertical Pinlight Fixture
APRIL 62705 CFX



Orientation: Vertical
Shape: Circle
Color: White
Material: Aluminum body and reflector
Mounting Type: Open1XE27, 4
Input Voltage (V): 220-240V~
Power (W): Up to 40W
Frequency (Hz): 60Hz
Verical Orientation
Recessed Mounting
Round Type

① PIN LIGHT
1 : 10

Parking Area

1. 2X4FT. Surface Louver Housing 12"X48"
No. of Lamp 2pcs 1200mm(4ft) T8 Tube 2 pcs
2. T8 LED Tube Light 18W 4FT Daylight Plastic
Wattage 18 Watts 4 pcs
3. 2 gang switch with plate 1 set
4. Utility box 1 pc

Porch

1. Round Recessed Vertical Pinlight Fixture 1 pc
2. E27 LED Bulb 15 Watts Nature White 1 pc
3. 2 Gang CO with plate 1 set

Common Bathroom 1

1. 2 Gang Switch with plate 1 set
2. Round Recessed Vertical Pinlight Fixture 2 pcs
3. E27 LED Bulb 15 Watts Nature White 2 pcs

Living Room

1. Round Recessed Vertical Pinlight Fixture 5 pcs
2. E27 LED Bulb 15 Watts Nature White 5 pcs
3. 2X4FT. Surface Louver Housing 12"X48"
No. of Lamp 2pcs 1200mm(4ft) T8 Tube 1 pc
4. T8 LED Tube Light 18W 4FT Daylight Plastic
Wattage 18 Watts 2 pcs
5. 2 Gang CO with plate 2 sets
6. 2 Gang Switch with plate 2 sets

Bedroom 1

1. 2 Gang Switch with plate 1 set
2. Round Recessed Vertical Pinlight Fixture 2 pcs
3. E27 LED Bulb 15 Watts Nature White 2 pcs
4. 2 Gang CO with plate 1 set
4. ACU outlet with plate 1 set
5. 1HP ACU Inverte split type 1 unit

Bedroom 2

1. 2 Gang Switch with plate 1 set
2. Round Recessed Vertical Pinlight Fixture 2 pcs
3. E27 LED Bulb 15 Watts Nature White 2 pcs
4. 2 Gang CO with plate 1 set

Bathroom 2

1. 1 Gang Switch with plate 1 set
2. Round Recessed Vertical Pinlight Fixture 1 pc
3. E27 LED Bulb 15 Watts Nature White 1 pc

Bedroom 3

1. 3 Gang Switch with plate 1 set
2. Round Recessed Vertical Pinlight Fixture 2 pcs
3. E27 LED Bulb 15 Watts Nature White 2 pcs
4. 2 Gang CO with plate 1 set
5. 2X4FT. Surface Louver Housing 12"X48"
No. of Lamp 2pcs 1200mm(4ft) T8 Tube 1 pc
6. T8 LED Tube Light 18W 4FT Daylight Plastic
Wattage 18 Watts 2 pcs
7. ACU outlet with plate 1 set
8. 2 Gang Switch with plate 2 sets
9. 1HP ACU Inverte split type 1 unit

Kitchen and Dine Area

1. 3 Gang Switch with plate 1 set
1. 1 Gang Switch with plate 1 set
2. Round Recessed Vertical Pinlight Fixture 6 pc
3. E27 LED Bulb 15 Watts Nature White 6 pc
5. 2X4FT. Surface Louver Housing 12"X48"
No. of Lamp 2pcs 1200mm(4ft) T8 Tube 1 pc
6. T8 LED Tube Light 18W 4FT Daylight Plastic
Wattage 18 Watts 2 pcs
7. 2 Gang CO with Plate 1 set
8. 1 Gang Range Outlet with Plate 1 set

Others:

1. 3.5mm² THHN Wire 50 mtrs
2. 20mmØ PVC Conduits and fittings 20 pcs
3. Electrical Tape 3 pcs
4. junction box 3 pcs
5. 2.0 mm² THHN wire 50 mtrs
6. 5.5mm² tTHHN wire 1 roll

② LIST OF MATERIALS
1 : 10



Republic of the Philippines

Civil Aviation Authority of the Philippines

Prepared by:
ROMUALDO U. BAYANGOS
ELECTRICAL ENGINEER

Checked by:
JOEFFREY B. LAGADON
ENGINEER II - FIC/BGM

Project Title:
**Rehabilitation/Improvement of Staff House
Laoag**

Project Location:
**Laoag International Airport, Brgy 36
Araniw, Laoag City**

Approved by:
Ronald V. Estabillo
CIVIL AVIATION AREA MANAGER, AREA 1
HEAD, CLUSTER 1 AREA CENTER

Scale :
1 : 10

Electrical Layout
E04