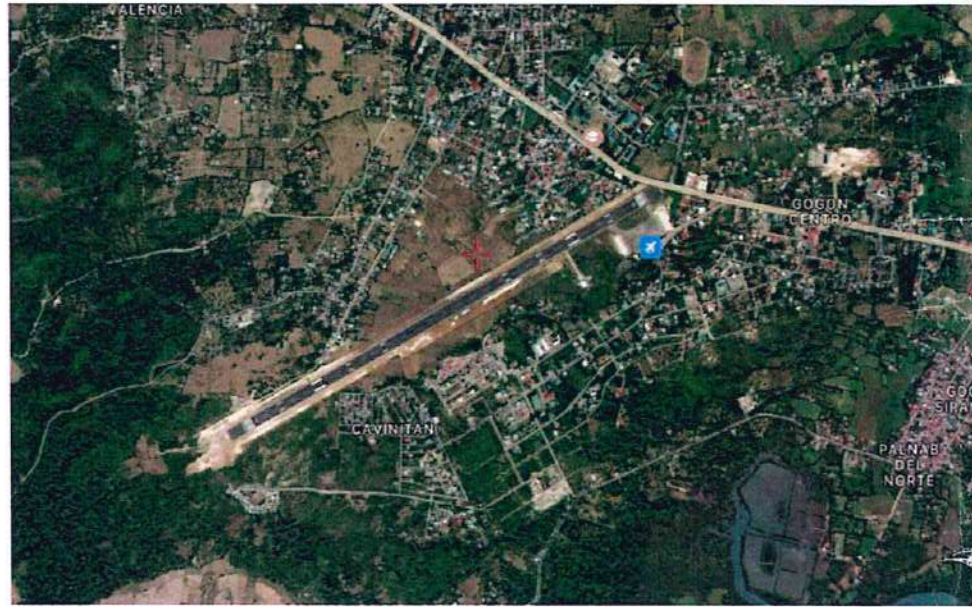
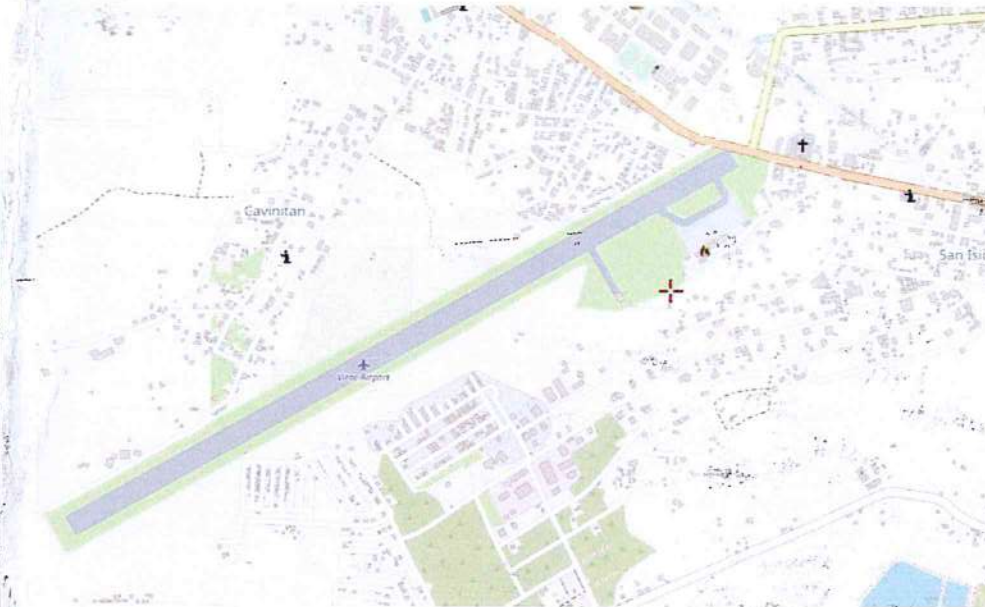




MAP OF THE PHILIPPINES



TOPOGRAPHIC VIEW



VICINITY MAP



REPUBLIC OF THE PHILIPPINES
CIVIL AVIATION AUTHORITY OF THE PHILIPPINES
800 ROAD, CAMPAGNON CITY

THIS DRAWING IS EXCLUSIVE PROPERTY OF CIVIL AVIATION AUTHORITY OF THE PHILIPPINES AND MUST NOT BE REPRODUCED, EXHIBITED, LOANED OR COPIED IN PART OR IN WHOLE WITHOUT PROPER PERMISSION AND/OR WRITTEN CONSENT FROM THE DIRECTOR GENERAL CAAP.

AERODROME DEVELOPMENT AND MANAGEMENT SERVICE

INFRASTRUCTURE DEVELOPMENT AND DESIGN DIVISION

DESIGN STAFF	INITIAL/DATE
DESIGNED BY: IDDD	
DRAWN BY: E.J.D.J.R.	
REVIEWED BY: RM	
DATE:	

CHECKED BY:

EMERSON P. SALAS
Asst. Division Chief III, Infrastructure Development and Design Division

SUBMITTED BY:

ARNEL F. BORLADO
Department Manager III, AED - ADMS

RECOMMEND APPROVAL:

LT COL. VALENTINO A. DIONELA PAF (RET)
Assistant Director General II, ADMS

APPROVED:

CAPTAIN MANUEL ANTONIO L. TAMAYO
DIRECTOR GENERAL

CONCURRED:

ATTY. ROBERTO C.O. LIM
UNDERSECRETARY FOR AVIATION AND AIRPORTS

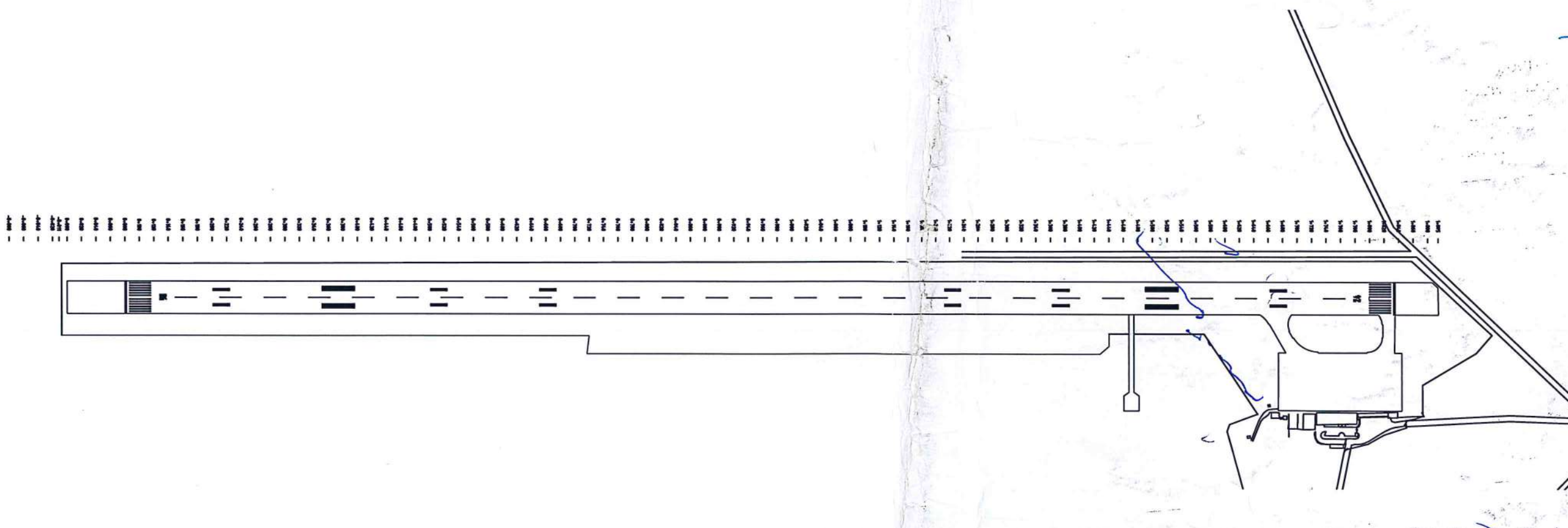
NOTES/REVISIONS:

PROJECT:
VIRAC AIRPORT DEVELOPMENT PROJECT

LOCATION:
**VIRAC AIRPORT
 VIRAC, CATANDUANES**

SHEET CONTENTS:
 • LOCATION MAP
 • AIRPORT LAYOUT PLAN

DRAWING SCALE:	SHEET NO.:
AS SHOWN	CW-01
	01 06



1 AIRPORT LAYOUT PLAN
 SCALE 1:2200 mts



REPUBLIC OF THE PHILIPPINES
CIVIL AVIATION AUTHORITY OF THE PHILIPPINES
100 ROAD, 100 PASAY CITY

THIS DRAWING IS EXCLUSIVE PROPERTY OF CIVIL AVIATION AUTHORITY OF THE PHILIPPINES AND MUST NOT BE REPRODUCED, EXHIBITED, LOANED OR COPIED IN PART OR IN WHOLE WITHOUT PROPER PERMISSION AND/OR WRITTEN CONSENT FROM THE DIRECTOR GENERAL CAAP.

AERODROME DEVELOPMENT AND MANAGEMENT SERVICE

INFRASTRUCTURE DEVELOPMENT AND DESIGN DIVISION

DESIGN STAFF	INITIAL/DATE
DESIGNED BY: JDD	
DRAWN BY: E.JUR	
REVIEWED BY: FM	

DATE: _____
CHECKED BY: *[Signature]*
Acting Division Chief III
Infrastructure Development and Design Division

SUBMITTED BY: *[Signature]*
ARNEL F. BORLADO
Department Manager III, AED - ADMS

RECOMMEND APPROVAL: *[Signature]*
LT COL ENRIQUE A. CHONLA-PARETE
Assistant Division Chief III, AED-ADMS

APPROVED: *[Signature]*
CAPTAIN MANUEL ANTONIO L. TAMAYO
DIRECTOR GENERAL

CONCURRED: *[Signature]*
ATTY. ROBERTO C.O. LIM
UNDERSECRETARY FOR AVIATION AND AIRPORTS

NOTES/REVISIONS:

PROJECT: VIRAC AIRPORT DEVELOPMENT PROJECT

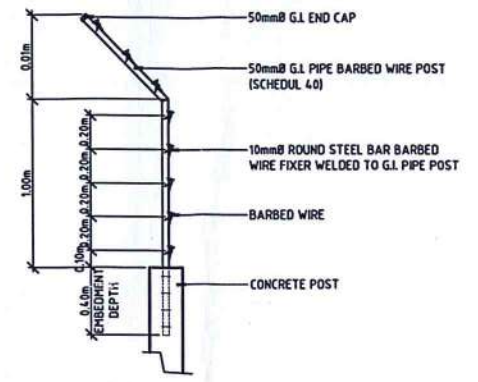
LOCATION: VIRAC AIRPORT, VIRAC, CATANDUANES

SHEET CONTENTS:
• LOCATION PLAN (PERIMETER FENCE)
• FOUNDATION PLAN
• PLAN VIEW
• ELEVATION
• DETAIL OF C1F1
• DETAIL OF C2F2
• DETAIL OF WF
• SECTION THRU A
• 8 STRANDS BARBED WIRE

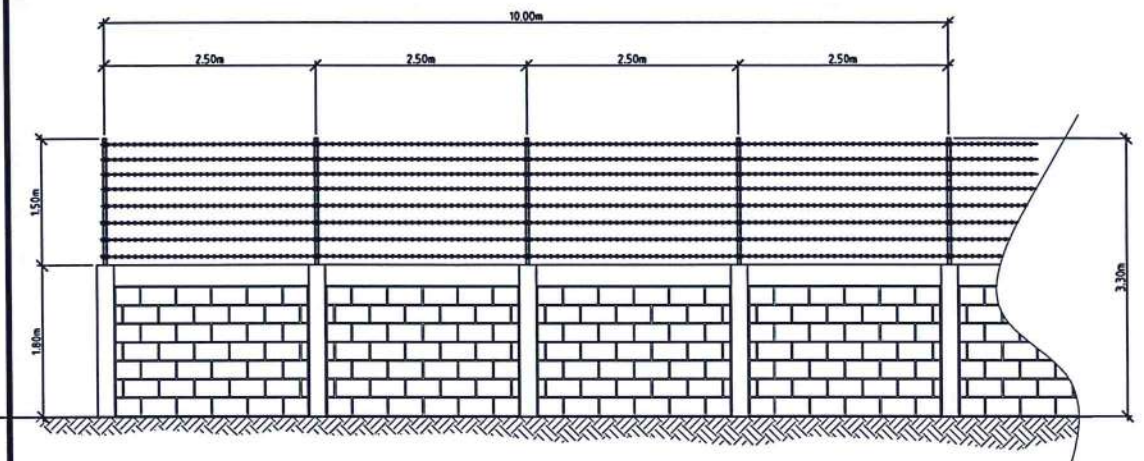
DRAWING SCALE:	SHEET NO:
	CW-02
	02 06

NOTE:

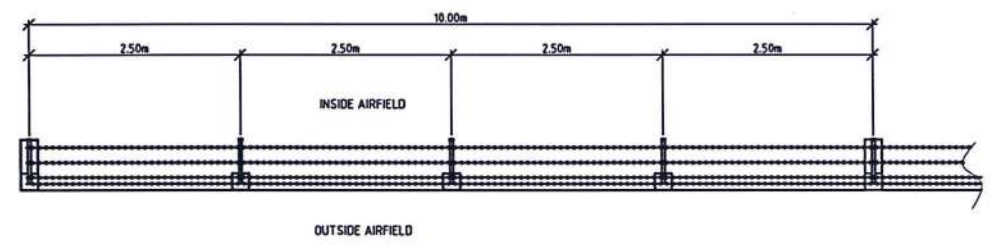
- CHB WALL SHALL BE IN COSTURA FINISH (BOTH FACES).
- CONCRETE COLUMNS SHALL BE CEMENT PLASTERED FINISH.
- G.I. PIPE SHALL BE SCHEDULE 40.
- PAINTINGS ALL G.I. PIPES SHALL BE PAINTED WITH RED LEAD OXIDE, RED LEAD, OR EPOXY PRIMER AS SPECIFIED BEFORE FINAL COAT IS APPLIED.



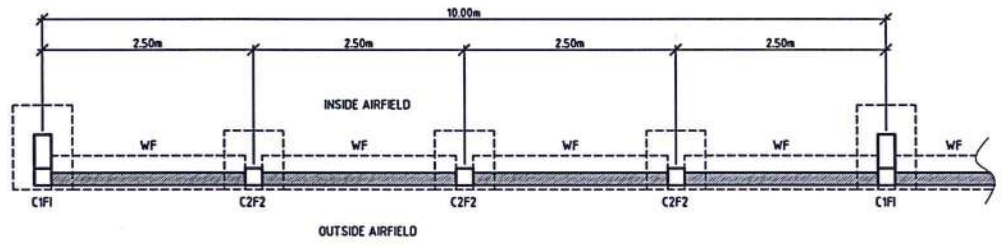
10 PERIMETER FENCE 8 STRANDS BARBED WIRE SCALE 1:25 mts



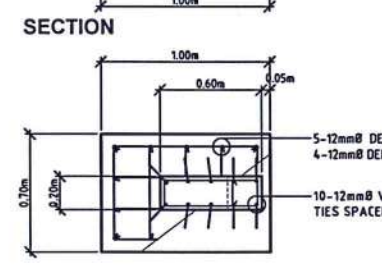
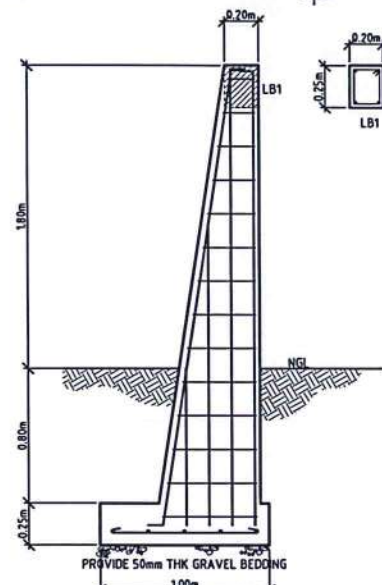
5 PERIMETER FENCE ELEVATION SCALE 1:50 mts



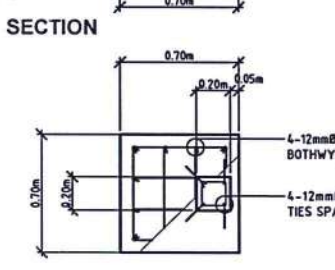
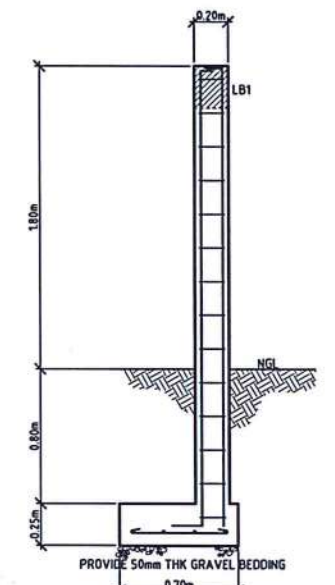
4 PERIMETER FENCE PLAN VIEW SCALE 1:50 mts



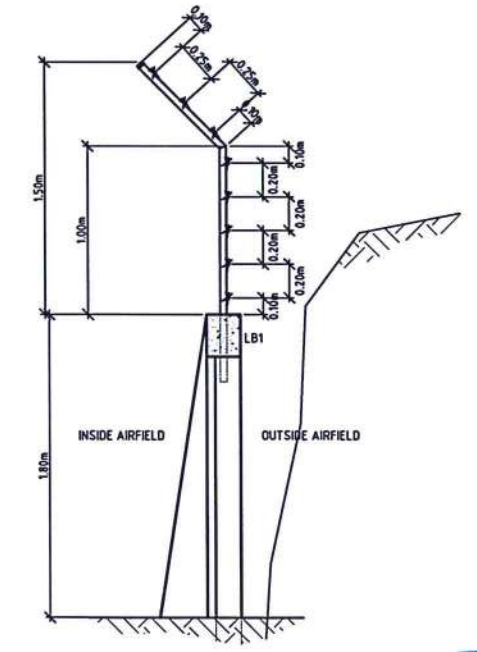
3 PERIMETER FENCE FOUNDATION PLAN SCALE 1:50 mts



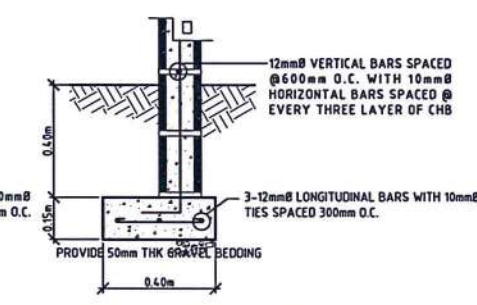
6 PERIMETER FENCE DETAIL OF C1F1 SCALE 1:25 mts



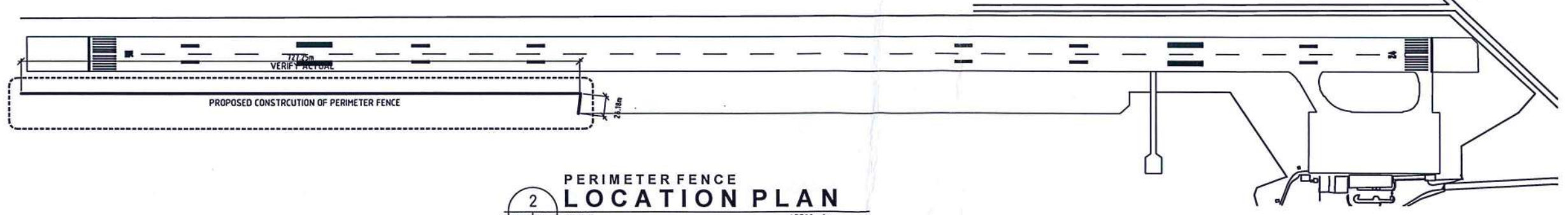
7 PERIMETER FENCE DETAIL OF C2F2 SCALE 1:25 mts



9 PERIMETER FENCE SECTION THRU 'A' SCALE 1:25 mts

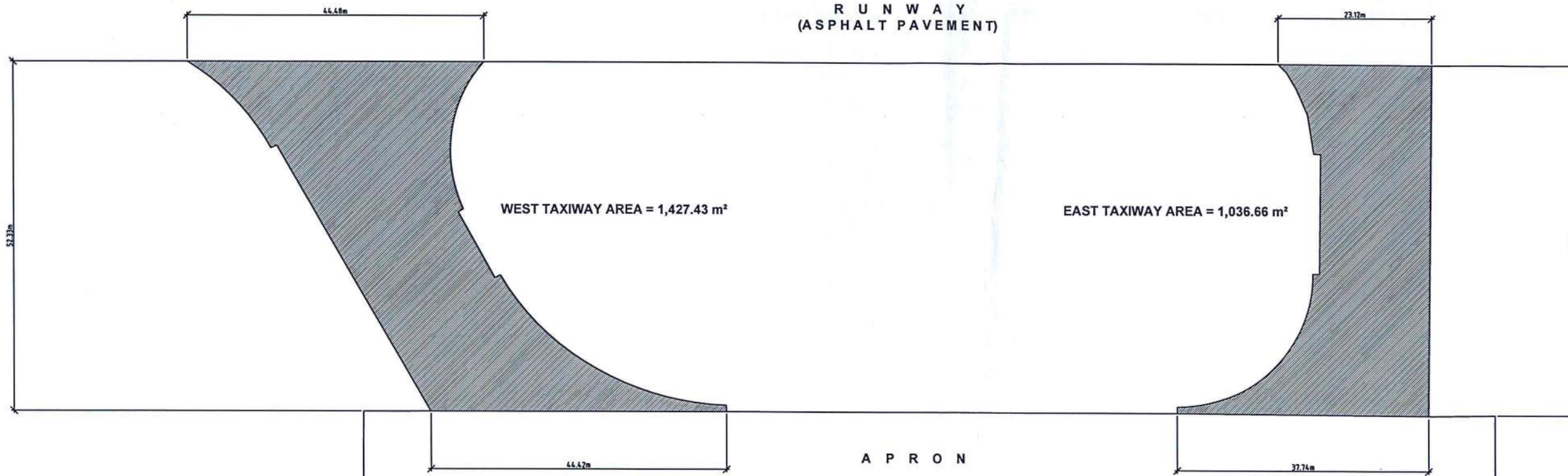


8 PERIMETER FENCE DETAIL OF WF SCALE 1:15 mts



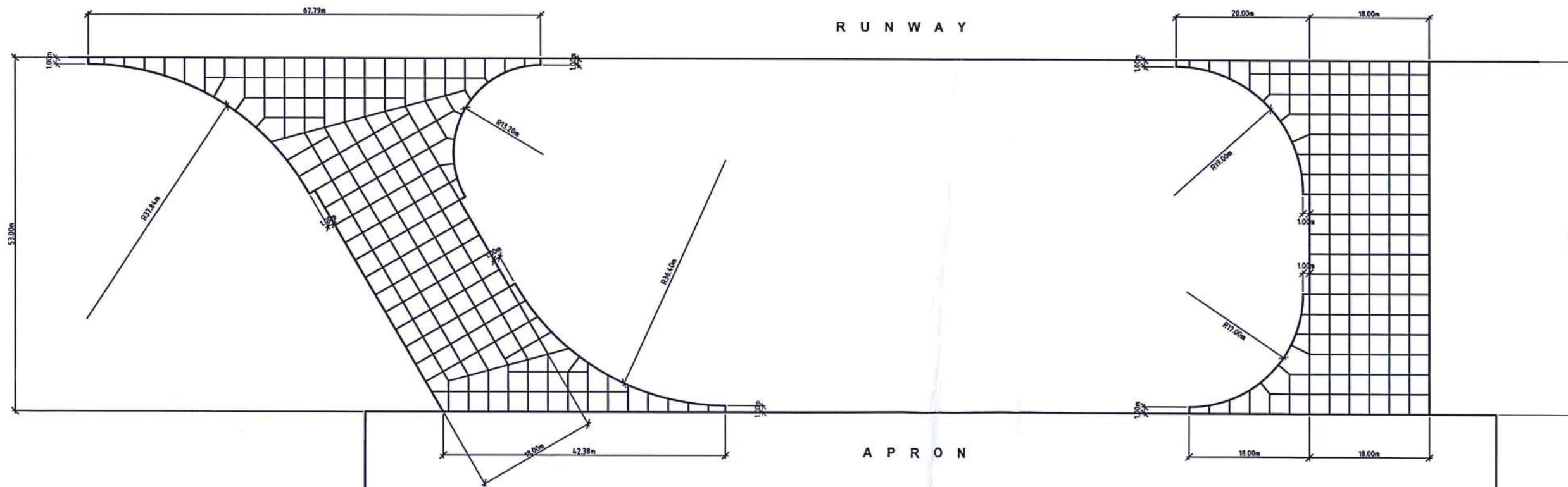
2 PERIMETER FENCE LOCATION PLAN SCALE 1:3500 mts

R U N W A Y
(ASPHALT PAVEMENT)



11 EXISTING TAXIWAY (FOR RE-BLOCKING)
SCALE 1:400 mts

R U N W A Y



12 TAXIWAY PAVING PLAN
SCALE 1:400 mts



REPUBLIC OF THE PHILIPPINES
CIVIL AVIATION AUTHORITY OF THE PHILIPPINES
MANILA, METRO MANILA CITY

THIS DRAWING IS EXCLUSIVE PROPERTY OF CIVIL AVIATION AUTHORITY OF THE PHILIPPINES AND MUST NOT BE REPRODUCED, EXHIBITED, LOANED OR COPIED IN PART OR IN WHOLE WITHOUT PROPER PERMISSION AND/OR WRITTEN CONSENT FROM THE DIRECTOR GENERAL CAAP.

AERODROME DEVELOPMENT AND MANAGEMENT SERVICE
INFRASTRUCTURE DEVELOPMENT AND DESIGN DIVISION

DESIGN STAFF	INITIAL/DATE
DESIGNED BY: IDDD	
DRAWN BY: E.JDJR	
REVIEWED BY: RM	
DATE:	

CHECKED BY:
EMERSON P. SALAS
Acting Division Chief III,
Infrastructure Development and Design Division

SUBMITTED BY:
ARNEL F. BORLADO
Department Manager III, AED - ADMS

RECOMMEND APPROVAL:
LT COL VALENTINO A DIONELA PAF (RET)
Assistant Director General II, ADMS

APPROVED:
CAPTAIN MANUEL ANTONIO L. TAMAYO
DIRECTOR GENERAL

CONCURRED:
ATTY. ROBERTO C.O. LIM
UNDERSECRETARY FOR AVIATION AND AIRPORTS

NOTES/REVISIONS:

PROJECT:
VIRAC AIRPORT DEVELOPMENT PROJECT

LOCATION:
VIRAC AIRPORT
VIRAC, CATANDUANES

SHEET CONTENTS:
• EXISTING TAXIWAY
• TAXIWAY PAVING PLAN

DRAWING SCALE:	SHEET NO:
	CW-03
	03 06

RUNWAY

THICKENED EDGE (ISOLATION JOINT - TA)

THICKENED EDGE (ISOLATION JOINT - TA)

APRON

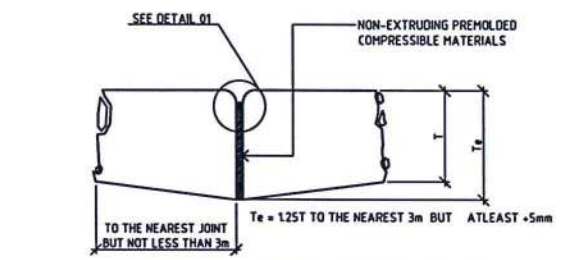
THICKENED EDGE (ISOLATION JOINT - TA)

LEGEND:

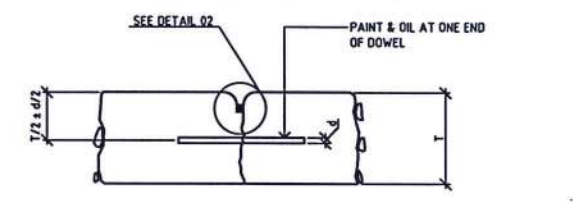
- TYPE A (TA) - THICKENED EDGE (ISOLATION JOINT)
- TYPE D (TD) - DUMMY CONTRACTION
- TYPE E (TE) - DOWELED CONSTRUCTION
- TYPE C (TC) - DOWELED CONTRACTION

13 LAYOUT OF PAVING JOINTS
SCALE

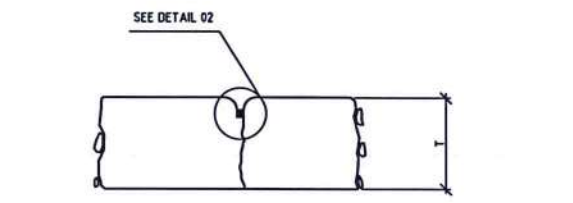
NOTE:
THE ELEVATION OF TAXIWAY SHOULD BE REFERRED TO THE ELEVATION OF THE CONNECTING POINT ON APRON TO RUNWAY



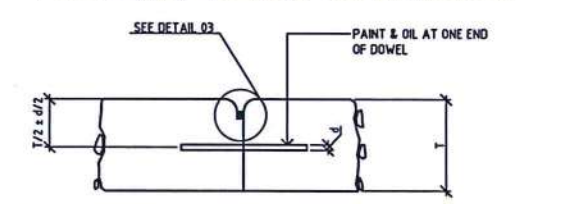
TYPE A (TA) - THICKENED EDGE (ISOLATED JOINT)



TYPE C (TC) - DOWELED CONTRACTION

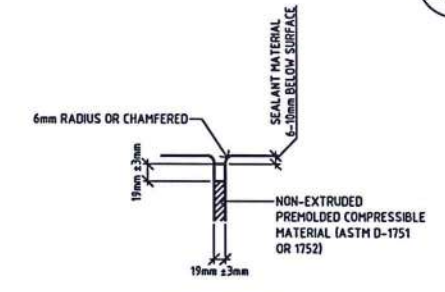


TYPE D (TD) - DUMMY CONTRACTION

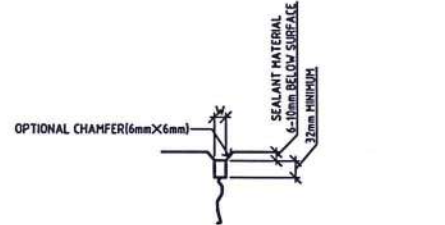


TYPE E (TE) - DOWELED CONTRACTION

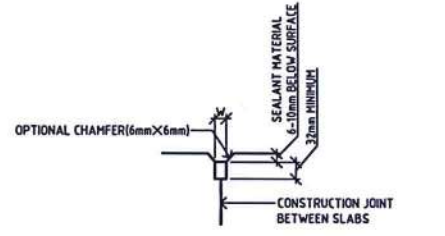
14 DETAIL OF PAVING JOINTS
NTS



DETAIL 01

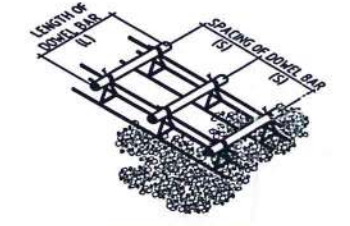


DETAIL 02



DETAIL 03

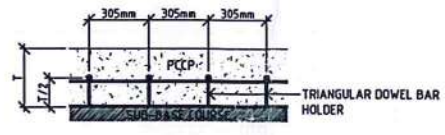
15 DETAIL OF JOINT SEALANT
NTS



ISOMETRIC

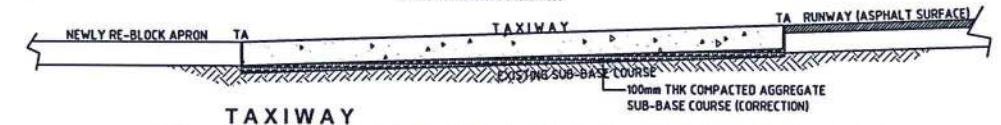


TRANSVERSE SECTION

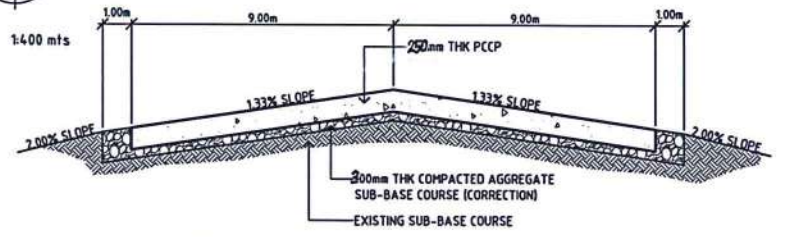


LONGITUDINAL SECTION

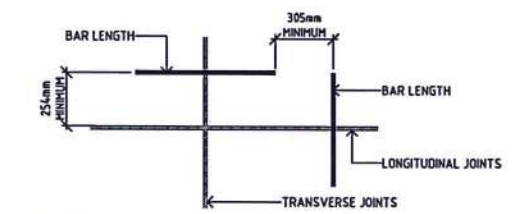
16 DOWEL BAR HOLDER
NTS



17 TAXIWAY LONGITUDINAL SECTION
NTS



18 TAXIWAY TRANSVERSE SECTION
NTS



19 POSITION OF DOWELS AT END OF JOINTS
NTS

PAVEMENT THICKNESS	DIMENSIONS AND SPACING OF STEEL DOWELS					
	CONTRACTION JOINTS			CONSTRUCTION JOINTS		
	DIAMETER Ø	LENGTH	SPACING	DIAMETER Ø	LENGTH	SPACING
7.5"-12" (191mm-305mm)	1" (25mm)	18" (460mm)	12" (305mm)	1" (25mm)	18" (460mm)	12" (305mm)

- NOTES:
- ALL STEEL DOWELS SHALL BE SUPPORTED AND HELD IN PLACE BY AN APPROVED ASSEMBLY.
 - ALL STEEL DOWELS SHALL BE OF GRADE 60 (60,000 psi / 414 MPa).
 - ALL FORMED JOINTS SHALL BE FINISHED WITH RADIUS OF 6mm OR 13mm.
 - ALL GROOVES OF CONTRACTION JOINTS SHALL BE SAWED WITHIN 24 HOURS.
 - WHERE PAVING OPERATIONS ARE DELAYED OR STOPPED, PROVIDE DOWELED CONSTRUCTION JOINT.
 - CONCRETE BLOCKING SHALL BE 3.0m BY 3.0m, UNLESS OTHERWISE GOVERNED BY ABUTTING EDGE.
 - ALL PAVING JOINTS SHALL BE FILLED WITH JOINT SEALANT AS SPECIFIED.



REPUBLIC OF THE PHILIPPINES
CIVIL AVIATION AUTHORITY OF THE PHILIPPINES
1103 ROAD (ORIENTAL CITY)

THIS DRAWING IS EXCLUSIVE PROPERTY OF CIVIL AVIATION AUTHORITY OF THE PHILIPPINES AND MUST NOT BE REPRODUCED, EXHIBITED, LOANED OR COPIED IN PART OR IN WHOLE WITHOUT PROPER PERMISSION AND/OR WRITTEN CONSENT FROM THE DIRECTOR GENERAL CAAP.

AERODROME DEVELOPMENT AND MANAGEMENT SERVICE
INFRASTRUCTURE DEVELOPMENT AND DESIGN DIVISION

DESIGN STAFF	INITIAL/DATE
DESIGNED BY: JDD	
DRAWN BY: E.J.D.R	
REVIEWED BY: FM	
DATE:	

CHECKED BY:
EMERSON P. SALAS
Acting Division Chief III,
Infrastructure Development and Design Division

SUBMITTED BY:
ARNEL F. BORLADO
Department Manager III, AED - ADMS

RECOMMEND APPROVAL:
LT COL VALENTINO A. DIONELA PAF (RET)
Assistant Director General II, ADMS

APPROVED:
CAPTAIN MANUEL ANTONIO L. TAMAYO
DIRECTOR GENERAL

CONCURRED:
ATTY. ROBERTO C.O. LIM
UNDERSECRETARY FOR AVIATION AND AIRPORTS

NOTES/REVISIONS:

PROJECT:
VIRAC AIRPORT DEVELOPMENT PROJECT

LOCATION:
VIRAC AIRPORT
VIRAC, CATANDUANES

SHEET CONTENTS:
• LAYOUT OF PAVING JOINTS
• DETAIL OF PAVING JOINTS
• DETAIL OF JOINT SEALANT
• DOWEL BAR HOLDER
• TRANSVERSE SECTION
• LONGITUDINAL SECTION
• POSITION OF DOWELS AT END OF JOINTS

DRAWING SCALE:	SHEET NO:
AS SHOWN	CW-04
	04 06



CIVIL AVIATION AUTHORITY OF THE PHILIPPINES
100 ROAD, TAGAYAY CITY

THIS DRAWING IS EXCLUSIVE PROPERTY OF CIVIL AVIATION AUTHORITY OF THE PHILIPPINES AND MUST NOT BE REPRODUCED, EXHIBITED, LOANED OR COPIED IN PART OR IN WHOLE WITHOUT PROPER PERMISSION AND/OR WRITTEN CONSENT FROM THE DIRECTOR GENERAL CAAP.

AERODROME DEVELOPMENT AND MANAGEMENT SERVICE

INFRASTRUCTURE DEVELOPMENT AND DESIGN DIVISION

DESIGN STAFF INITIAL/DATE

DESIGNED BY: JDD
DRAWN BY: EJR
REVIEWED BY: FM

DATE:

CHECKED BY:
EMERSON P. SALAS
Acting Division Chief III,
Infrastructure Development and Design Division

SUBMITTED BY:
ARNEL F. BORLADO
Department Manager III, AED - ADMS

RECOMMEND APPROVAL:
LT COL VALENTINO A. DIONELA PAF (RET)
Assistant Director General II, ADMS

APPROVED:
CAPTAIN MANUEL ANTONIO L. TAMAYO
DIRECTOR GENERAL

CONCURRED:
ATTY. ROBERTO C.O. LIM
UNDERSECRETARY FOR AVIATION AND AIRPORTS

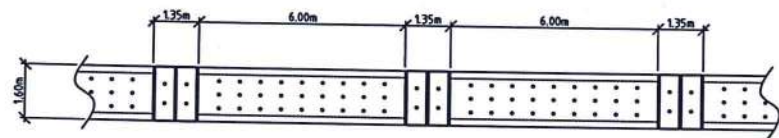
NOTES/REVISIONS:

PROJECT:
VIRAC AIRPORT DEVELOPMENT PROJECT

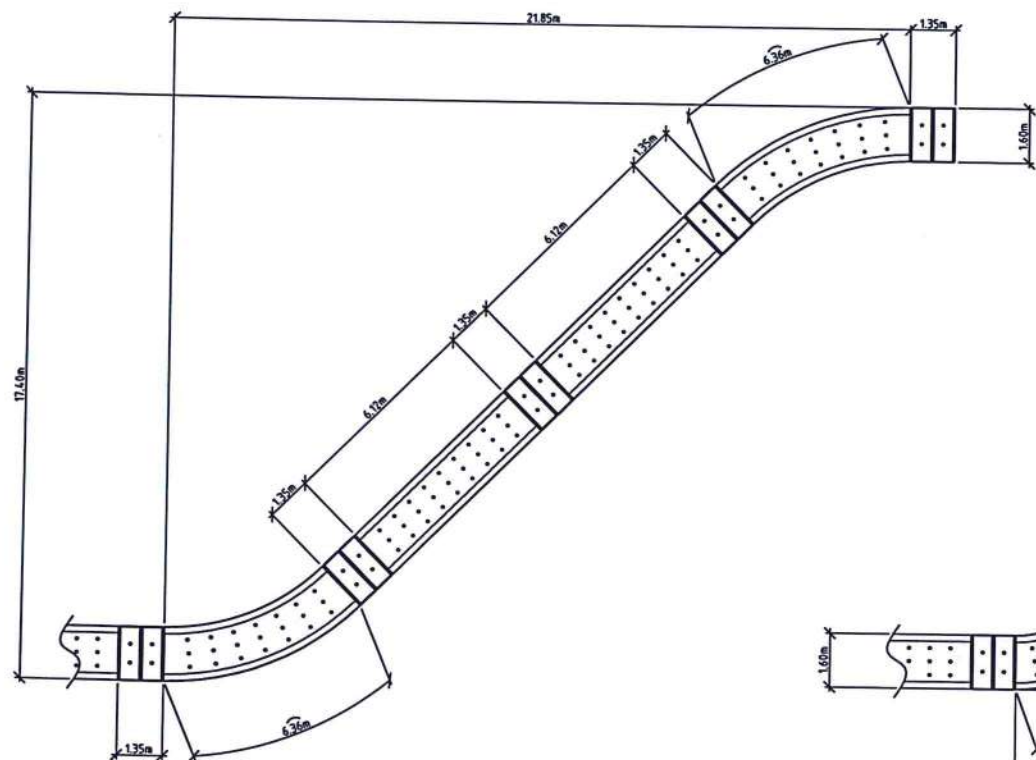
LOCATION:
VIRAC AIRPORT VIRAC, CATANDUANES

SHEET CONTENTS:
• LOCATION PLAN (DRAINAGE SYSTEM)
• BLOW UP PLAN 01
• BLOW UP PLAN 02
• BLOW UP PLAN 03
• BLOW UP PLAN 04

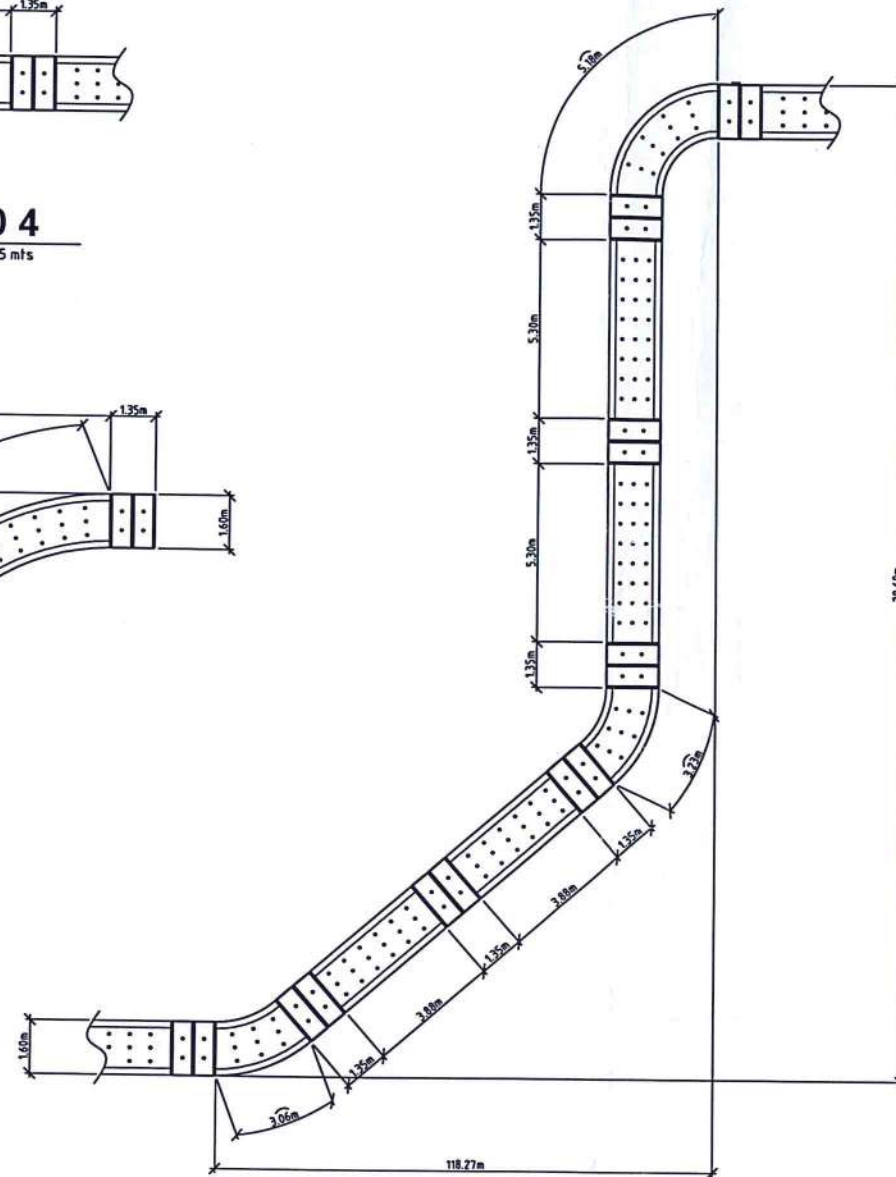
DRAWING SCALE: AS SHOWN SHEET NO: CW-05 05 06



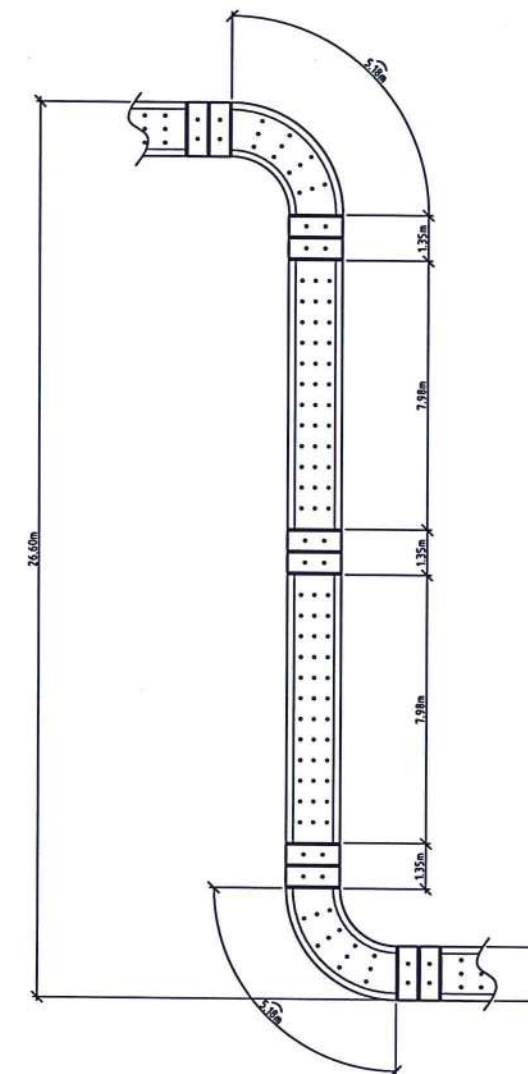
24 DRAINAGE SYSTEM BLOW UP PLAN 04
SCALE 1:125 mts



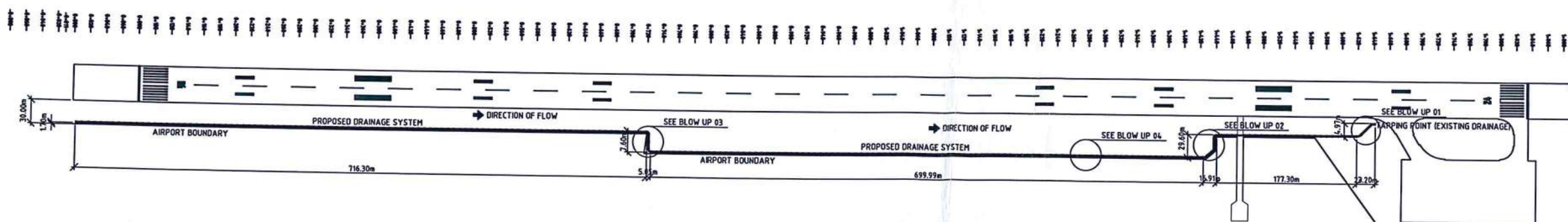
21 DRAINAGE SYSTEM BLOW UP PLAN 01
SCALE 1:125 mts



22 DRAINAGE SYSTEM BLOW UP PLAN 02
SCALE 1:125 mts



23 DRAINAGE SYSTEM BLOW UP PLAN 03
SCALE 1:125 mts



20 DRAINAGE SYSTEM LOCATION PLAN
SCALE 1:3500 mts



CIVIL AVIATION AUTHORITY OF THE PHILIPPINES
 REPUBLIC OF THE PHILIPPINES
 1000 BANGSAWAY, PASAY CITY

THIS DRAWING IS EXCLUSIVE PROPERTY OF CIVIL AVIATION AUTHORITY OF THE PHILIPPINES AND MUST NOT BE REPRODUCED, EXHIBITED, LOANED OR COPIED IN PART OR IN WHOLE WITHOUT PROPER PERMISSION AND/OR WRITTEN CONSENT FROM THE DIRECTOR GENERAL CAAP.

AERODROME DEVELOPMENT AND MANAGEMENT SERVICE
 INFRASTRUCTURE DEVELOPMENT AND DESIGN DIVISION

DESIGN STAFF	INITIAL/DATE
DESIGNED BY: JDD	
DRAWN BY: EJR	
REVIEWED BY: FM	
DATE:	

CHECKED BY:

EMERSON P. SALAS
 Acting Division Chief III,
 Infrastructure Development and Design Division

SUBMITTED BY:

ARNEL F. BORLADO
 Department Manager III, AED - ADMS

RECOMMEND APPROVAL:

LT COL VALENTINO A. DIONELA PAF (RET)
 Assistant Director General II, ADMS

APPROVED:

CAPTAIN MANUEL ANTONIO L. TAMAYO
 DIRECTOR GENERAL

CONCURRED:

ATTY. ROBERTO C.O. LIM
 UNDERSECRETARY FOR AVIATION AND AIRPORTS

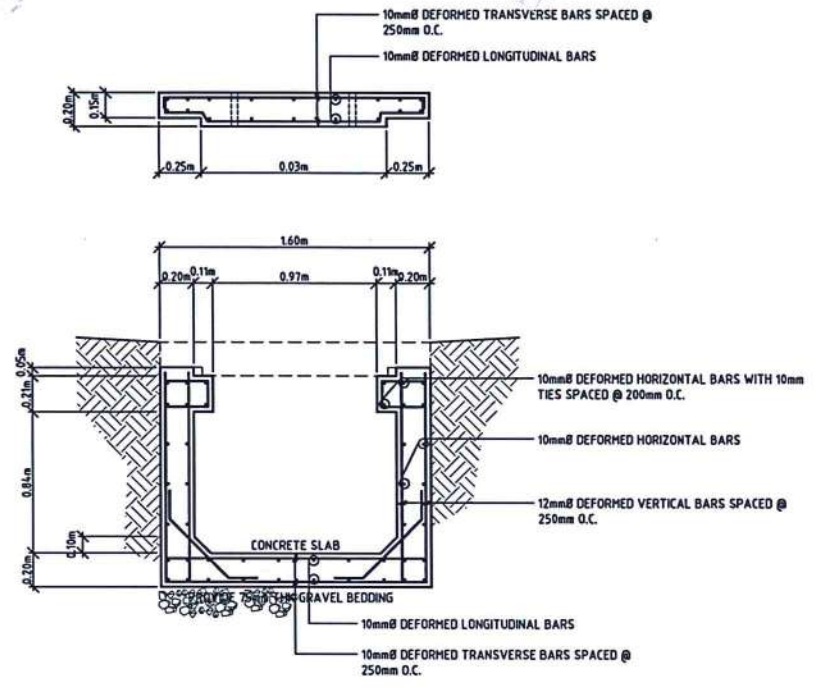
NOTES/REVISIONS:

PROJECT:
VIRAC AIRPORT DEVELOPMENT PROJECT

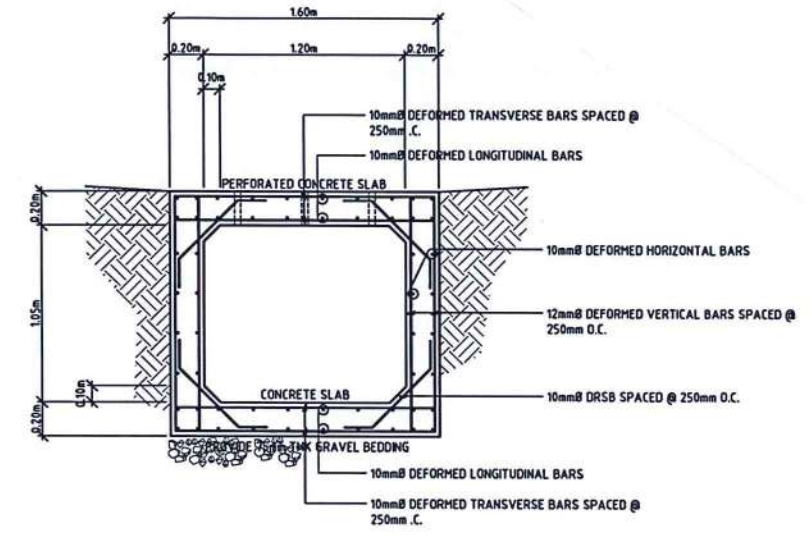
LOCATION:
**VIRAC AIRPORT
 VIRAC, CATANDUANES**

SHEET CONTENTS:
 • TYPICAL PLAN (DRAINAGE SYSTEM)
 • LONGITUDINAL SECTION
 • SECTION THRU A
 • SECTION THRU B
 • BOX CULVERT
 • TRANSVERSE SECTION (BOX CULVERT)

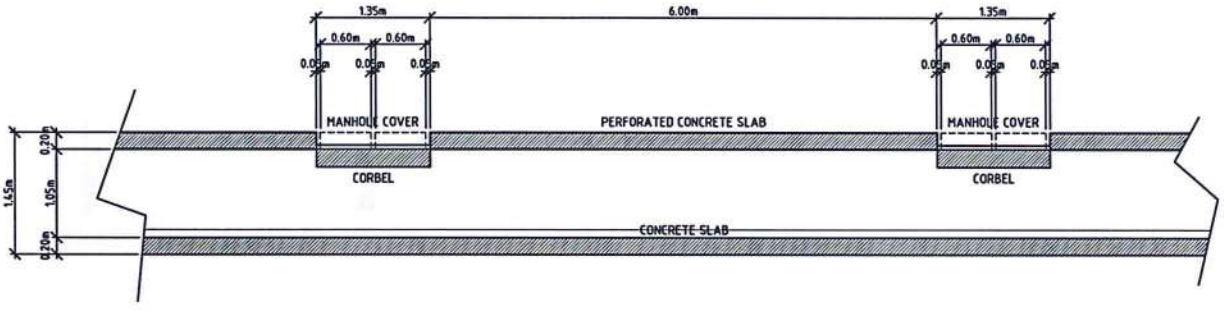
DRAWING SCALE:	SHEET NO:
AS SHOWN	CW-06
	06 06



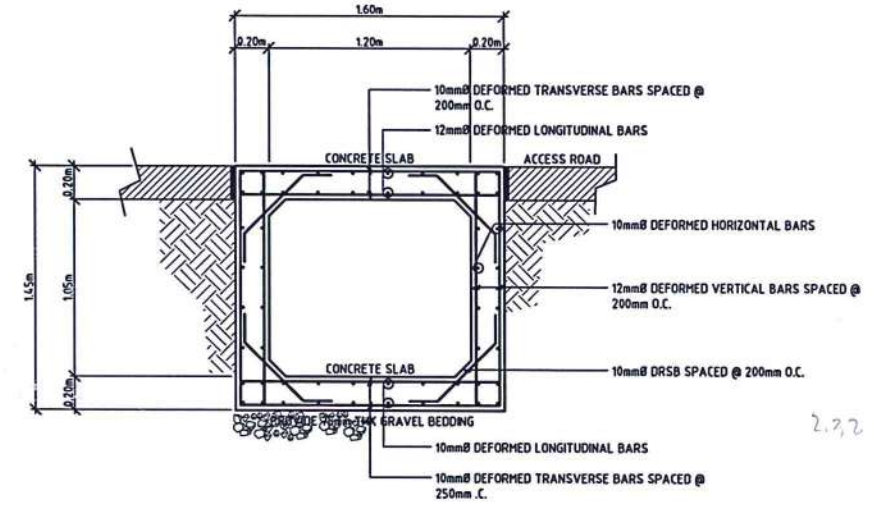
27 DRAINAGE SYSTEM SECTION THRU "B"
 SCALE 1:25 mts



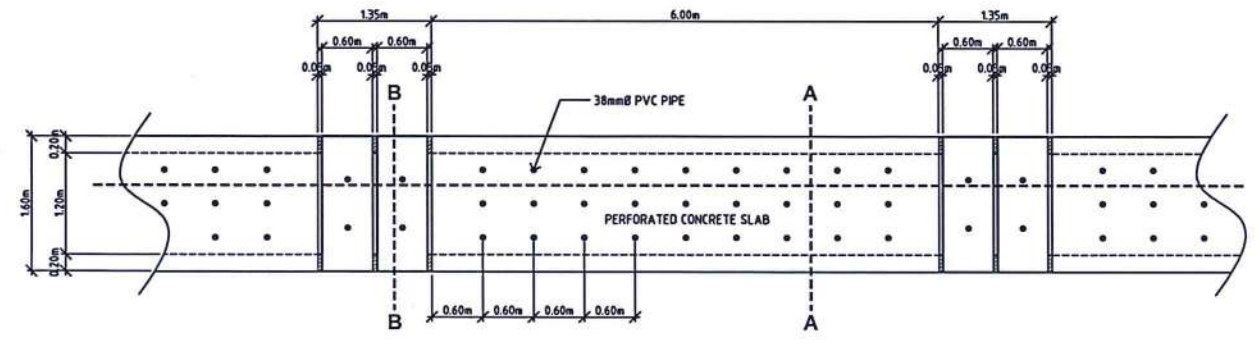
28 DRAINAGE SYSTEM SECTION THRU "A"
 SCALE 1:25 mts



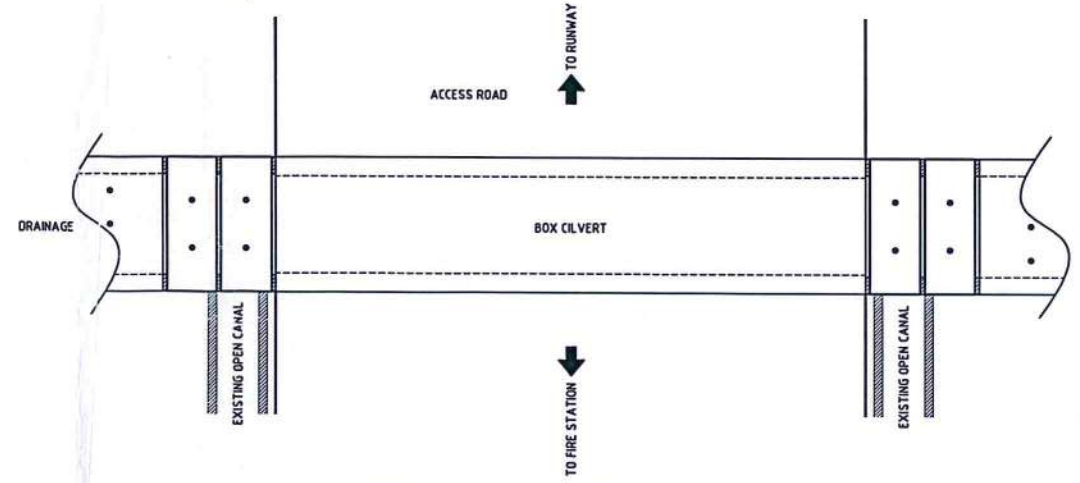
26 DRAINAGE SYSTEM LONGITUDINAL SECTION
 SCALE 1:50 mts



30 DRAINAGE SYSTEM TRANSVERSE SECTION
 SCALE 1:25 mts



25 DRAINAGE SYSTEM TYPICAL PLAN
 SCALE 1:50 mts



29 DRAINAGE SYSTEM BOX CULVERT PLAN
 SCALE 1:50 mts