

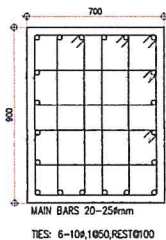
**BID BULLETIN NO. 4**  
**Bid No. 21-018-09 Charlie**

**24 September 2021**

This Supplemental/Bid Bulletin is issued to modify, amend or clarify items in the Bidding Documents for the **BUKIDNON AIRPORT DEVELOPMENT PROJECT - PHASE III (Passenger Terminal Building, Runway Strip, Runway Extension, 2-units Pipe Conduit, Box Culvert and Runway Markings).**

1. New schedule for the deadline of the submission and opening of Bids will be on **04 October 2021, 2:00 PM** at CAAP Conference Room (4<sup>th</sup> Floor), MIA Road, Ninoy Aquino Avenue, 1300 Pasay City, Metro Manila.
2. The following table contains queries from the bidders with corresponding clarifications:

Queries	Clarifications/Amendment
a) <i>Inconsistency in the Bill of Quantities for the scope of work “Supply and Installation of Baggage Handling System” listed as Item 6.0 with the quantity of 22 sets. The same scope of work is listed as item 2.0 with the quantity of 1.00 lot in the Bill of Materials and Cost Estimate.</i>	The correct Item No. and Quantity/Unit for the “Supply and Installation of Baggage Handling System” work is 6.0 and 1 lot, respectively. This shall be reflected on the Financial Component forms such as Bill of Quantities (CAAP-BAC-SF Annex “C” Form 1) (page 249), Summary of Bid Proposal (CAAP-BAC-SF Annex “C” Form 2) (page 253), and Bill of Materials & Cost Estimate (CAAP-BAC-SF Annex “C” Form 3) (page 296). See attached corrected forms.
b) <i>We'd want to know if the CCTV units will be IP or Analog, and if, according to the BOQ, the video recorder will be a DVR while we have network switching requirements? For your clarification.</i>	For Item 3.12 CCTV, Voice and Data System under Electrical Works, the <b>IP</b> CCTV cameras will be used and for the DVR, as per BOQ, is a device that supports analog AHD/IP/TVI/CVBS/CVI Cameras.
c) <i>Please provide Fire Protection Plans &amp; Details</i>	The requirement is Portable Fire Extinguishers with wall hangers only. Please refer to attached additional plans, Sheet Nos. FE-1 and FE-2.
d) <i>Please clarify conflict in drawing 2S-4 detail 3 (see below figure). The detail shows 5 sets of Ties only. However, the statement below indicates 6 sets.</i>	It should be written as:  “Ties: 5-10Ø; 1@50; Rest@100”



**BASEPLATE AND COLUMN DETAIL (C-1)**  
 SCALE 1:10 M

e) Can you pls provide one-line diagram of the ff; CCTV System Voice & Data System FDAS PA System	See attached One-line Diagram.
---	--------------------------------

3. Correction on the issued Bid Bulletin No. 2 for *Item 2.06 – Curtain Glass Wall Panel* of Architectural Work under Construction of PTB, attached in this bid bulletin is the revised Bill of Materials & Cost Estimate (CAAP-BAC-SF Annex “C” Form 3) (page 270) for said item.
4. Correction on the issued Bid Bulletin No. 2 for *Item 3.00 – Electrical Works* under Construction of PTB, the feeder conductor from PTB to Power Maintenance Building is included in the scope of work. (See plans for length and layout.) While termination and layout within the Power Maintenance Building is not included.

This Bid Bulletin should be included in the Technical Requirements and be marked accordingly. This serves as an integral part of the bidding documents of the project and non-inclusion of this Bid Bulletin in the Technical Requirements will constitute disqualification.

For the information and guidance of all concerned.

  
CAPTAIN DONALDO A. MENDOZA  
Chairman, Bids and Awards Committee

5.05	Septic Tank & Catch Basin	32.92	cu.m.		
	Pesos_____ Amount in Words				
	_____and_____				
	_____centavos				
5.06	Fixtures & Accessories	1.00	lot		
	Pesos_____ Amount in Words				
	_____and_____				
	_____centavos				
6.00	SUPPLY & INSTALLATION OF BAGGAGE HANDLING SYSTEM	1.00	lot		
	Pesos_____ Amount in Words				
	_____and_____				
	_____centavos				
B	RUNWAY STRIP				
100	Clearing & Grubbing	258,808.00	sq.m.		
	Pesos_____ Amount in Words				
	_____and_____				
	_____centavos				
102	Excavation & Disposal	520,341.00	cu.m		
	Pesos_____ Amount in Words				
	_____and_____				
	_____centavos				
104	Embankment	924,414.85	cu.m		
	Pesos_____ Amount in Words				
	_____and_____				
	_____centavos				

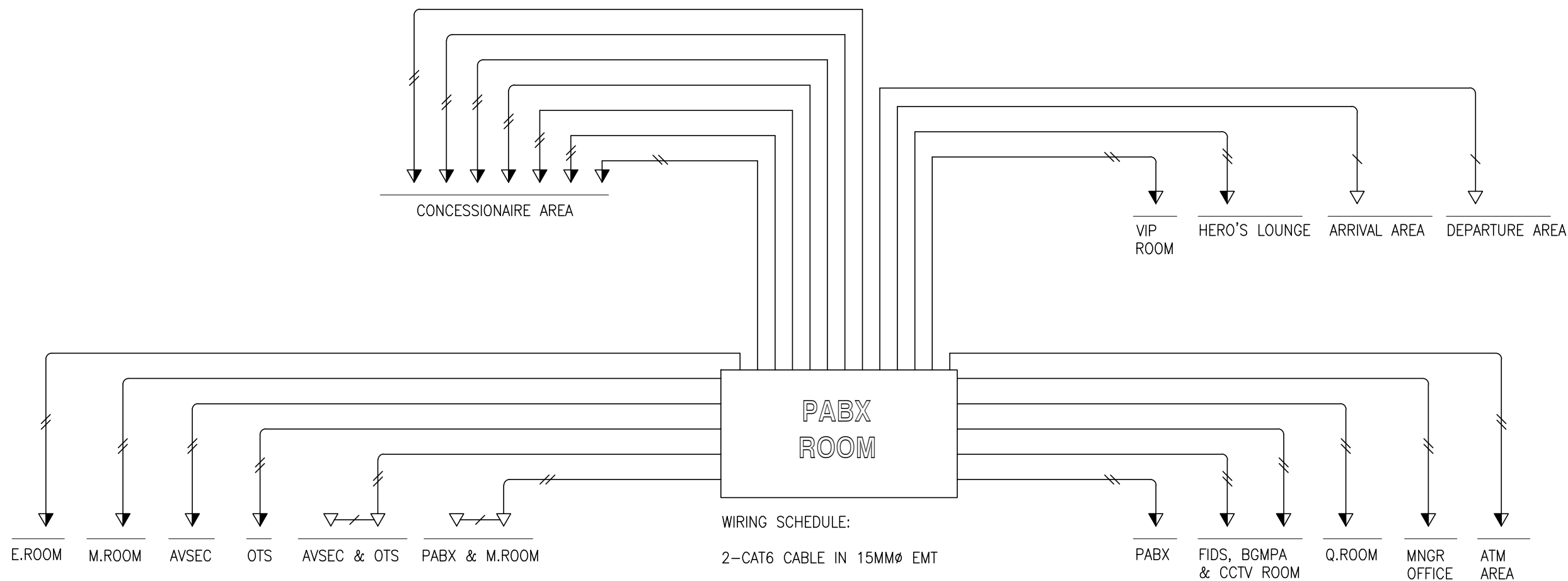




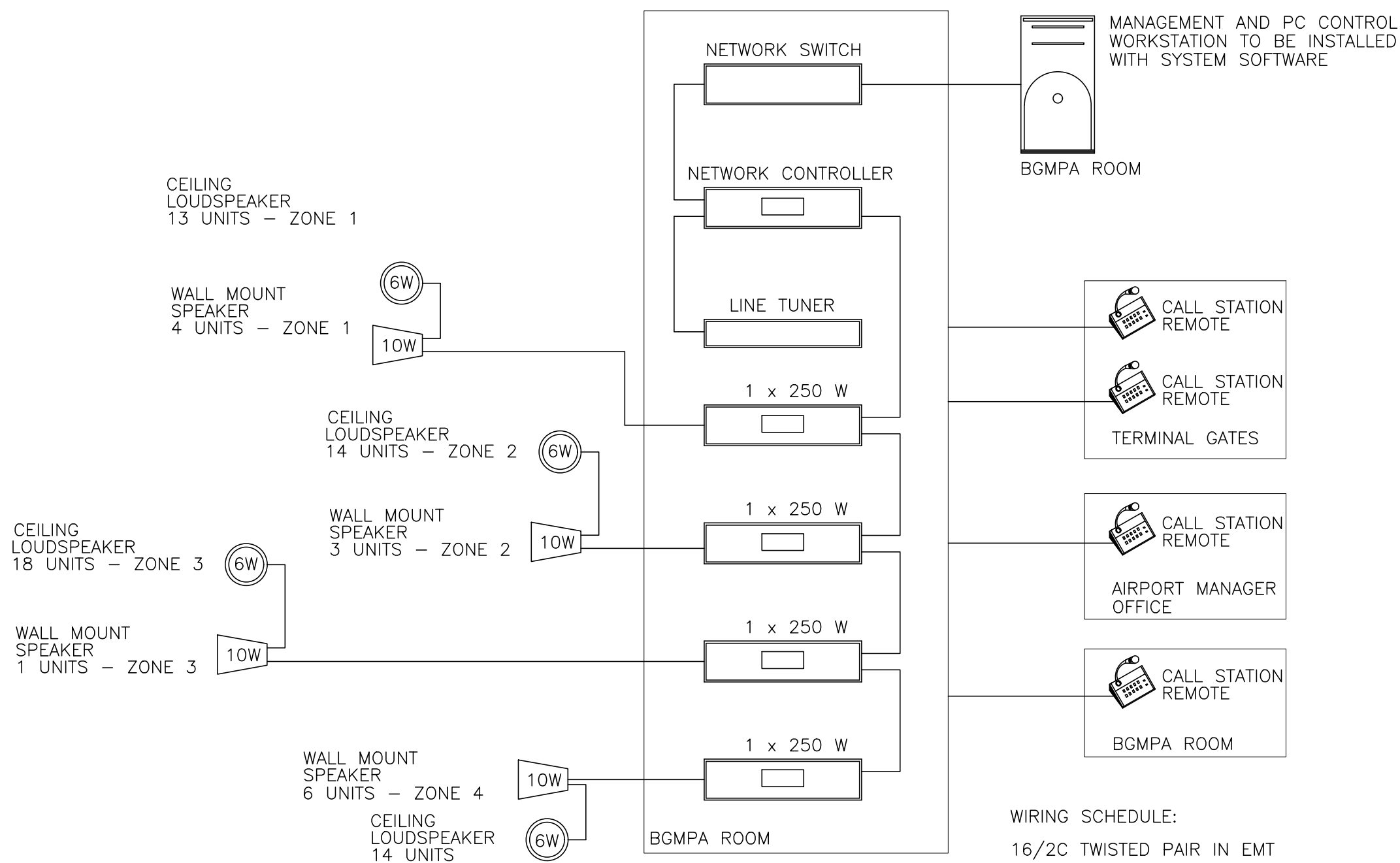
NAME OF PROJECT : BUKIDNON AIRPORT DEVELOPMENT PROJECT PHASE III					
DESCRIPTION : CONSTRUCTION OF PASSENGER TERMINAL BUILDING					
LOCATION : Brgy. Maray-Maray, Don Carlos, Bukidnon				QTY.	UNIT
SUBJECT : BILL OF MATERIALS & COST ESTIMATE				1.00	lot
ITEM	DESCRIPTION	QUANTITY	UNIT	UNIT PRICE	AMOUNT (P)
6.00	SUPPLY AND INSTALLATION OF BAGGAGE HANDLING SYSTEM				
A	Materials				
	Weighing Conveyor complete with cladding, frames, Electronic Weigh Scale consisting of 500 kg load cells, remote LCD indicator, leveling foot pad, foot pedal switch, control panel, circuit breakers, wirings and other standard accessories Dimension: 600 mm belt width x 1,200 mm length x 400 mm height (Top of belt) Belt: 600 mm belt width, 3.1 ± 0.2 mm thick, 2-ply Cladding: 3 mm. thick, Hairline finished Drive: 220-240 V, 60 Hz, 3 Ph, 0.37 KW foot mounted motor positioned inside the conveyor frame	8.00	sets		
	Index Conveyor complete with cladding, frames, electrical controls, levelling foot pad, turn pole roller and other standard accessories Dimension: 600 mm belt width x 1,200 mm length x 400-450 mm height (Top of belt) Drive: 220-240 V, 60 Hz, 3 Ph, 0.37 KW foot mounted motor positioned inside the conveyor frame	8.00	sets		
	Collection Conveyor complete with cladding, frames, electrical controls, VFD, emergency stop button, levelling foot pad and other standard accessories Dimension: 1,000 mm belt width x 20,000 mm length x 400 mm height Drive: 220-240 V, 60 Hz, 3 Ph, 2.2 KW shaft mounted motor Speed: 25 m./min.	1.00	set		
	Transport Conveyor No. 1 complete with cladding, frames, electrical controls, VFD, emergency stop button, levelling foot pad and other standard accessories Dimension: 1,000 mm belt width x 8,500 mm length x 400 mm height Drive: 220-240 V, 60 Hz, 3 Ph, 1.5 KW shaft mounted motor Speed: 25 m./min.	1.00	set		
	Transport Conveyor No. 2 complete with cladding, frames, electrical controls, VFD, emergency stop button, levelling foot pad and other standard accessories Dimension: 1,000 mm belt width x 13,000 mm length X 400 mm height Drive: 220-240 V, 60 Hz, 3 Ph, 1.5 KW shaft mounted motor Speed: 25 m./min.	1.00	set		
	Out of Gauge Weighing Scale complete with 500 kg load cells, remote LCD indicator, cladding, frame, pedestal and other standard accessories Dimension: 1,200 mm length x 1,000 mm width x 130 mm height Capacity: 150 kg. with overload capacity up to 750 kg.	1.00	set		
	Gravity Roller Conveyor complete with frames, levelling foot pad and other standard accessories Dimension: 1,000 mm width x 6,000 mm length x 400 mm height Rollers: Zinc coated, 50 mm dia., 75 mm pitch center to center, 25 mm gap	1.00	set		
	Baggage Claim Carousel, "T" Shape, Flat Type complete with cladding, frames, control panel, VFD, circuit breaker, overload relays, contactors, switches, wirings, emergency stop buttons, tower light w/ buzzer alarm, leveling foot pad and other standard accessories Dimension: 46 m. Equivalent Straight Length x 1,012 mm Width x 400 mm Height Drive: 220-240 V, 60 Hz, 3 Ph, 2 x 2.2 KW motor Slat: 1,000 mm W x 5 mm T Overlapping rubber slat Cladding: Stainless Steel 304, 3 mm. thick, Hairline finished (Passenger Side) Mild Steel, 3 mm. thick, Primed and Painted (Air Side) Center in-fill: Enclosed and finished by fine rated/marine plywood Support by metal framework and covered with carpeting	1.00	set		
	Roll-up Shutter door, Aluminum type with Automatic and Manual Functions complete with standard accessories	3.00	sets		
	Draft Curtain, 1,200 mm x 1,200 mm, overlapping, complete with standard accessories	3.00	sets		
	Shipping, Delivery and Transportation	1.00	lot		
	Welding Rod 1/8", 5 kg/box		boxes		
			Material Cost	.....	
B	Labor	QTY	DUR. (Day)	RATE/DAY	
	Construction Foreman				
	Skilled Laborer				
	Common Laborer				
			Labor Cost	.....	
C	Equipment	QTY	DUR. (Day)	RATE/DAY	
	Portable Generator Set (10 KVA)				
	Portable Welding Machine (10-200 Amp)				
			Equipment Cost	.....	
A	TOTAL MATERIAL COST				
B	TOTAL LABOR COST				
C	TOTAL EQUIPMENT COST				
D	TOTAL DIRECT COST				
INDIRECT COSTS					
1. OCM (0% - 8% of TDC)					
2. CONTRACTOR'S PROFIT (0% - 8% of TDC)					
E. TOTAL OCM & PROFIT					
F. VALUE ADDED TAX, (VAT) 5.0% of (D + E)					
G. TOTAL ESTIMATED INDIRECT COST ( E + F ), P					
H. TOTAL ESTIMATED UNIT INDIRECT COST ( G / Quantity), P/Unit					
TOTAL ESTIMATED COST ( D + G ), P					
TOTAL ESTIMATED UNIT COST (Total Estimated Cost / Quantity), P/Unit					

2.00 ARCHITECTURAL WORK				QUANTITY	UNIT
ITEM	DESCRIPTION	QUANTITY	UNIT	815.00	sq.m.
				UNIT COST	AMOUNT
2.06	Curtain Glass Wall Panel				
A	Materials				
	Curtain Wall Glass Panels, (Double Glazing , 2-12mm thk)		sq.m.	Material Cost	.....
B	Labor (including tools & equipment cost)	QTY	DUR. (DAYS)	RATE/DAY	
	Construction Foreman				
	Skilled Laborer				
	Common Laborer			Labor Cost	.....
A Curtain Glass Wall Panel Works Total Material Cost					
B Curtain Glass Wall Panel Works Total Labor Cost					
D Curtain Glass Wall Panel Works Total Direct Cost					
INDIRECT COSTS					
1. OCM (0% - 8% of TDC)					
2. CONTRACTOR's PROFIT (0% - 8% of TDC)					
E. TOTAL OCM & PROFIT					
F. VALUE ADDED TAX, (VAT) 5.0% of (D + E)					
G. TOTAL ESTIMATED INDIRECT COST ( F + E ), P					
H. TOTAL ESTIMATED UNIT INDIRECT COST ( G / Quantity), P/Unit					
TOTAL ESTIMATED COST ( D + G ), P					
TOTAL ESTIMATED UNIT COST (Total Estimated Cost / Quantity), P/Unit					

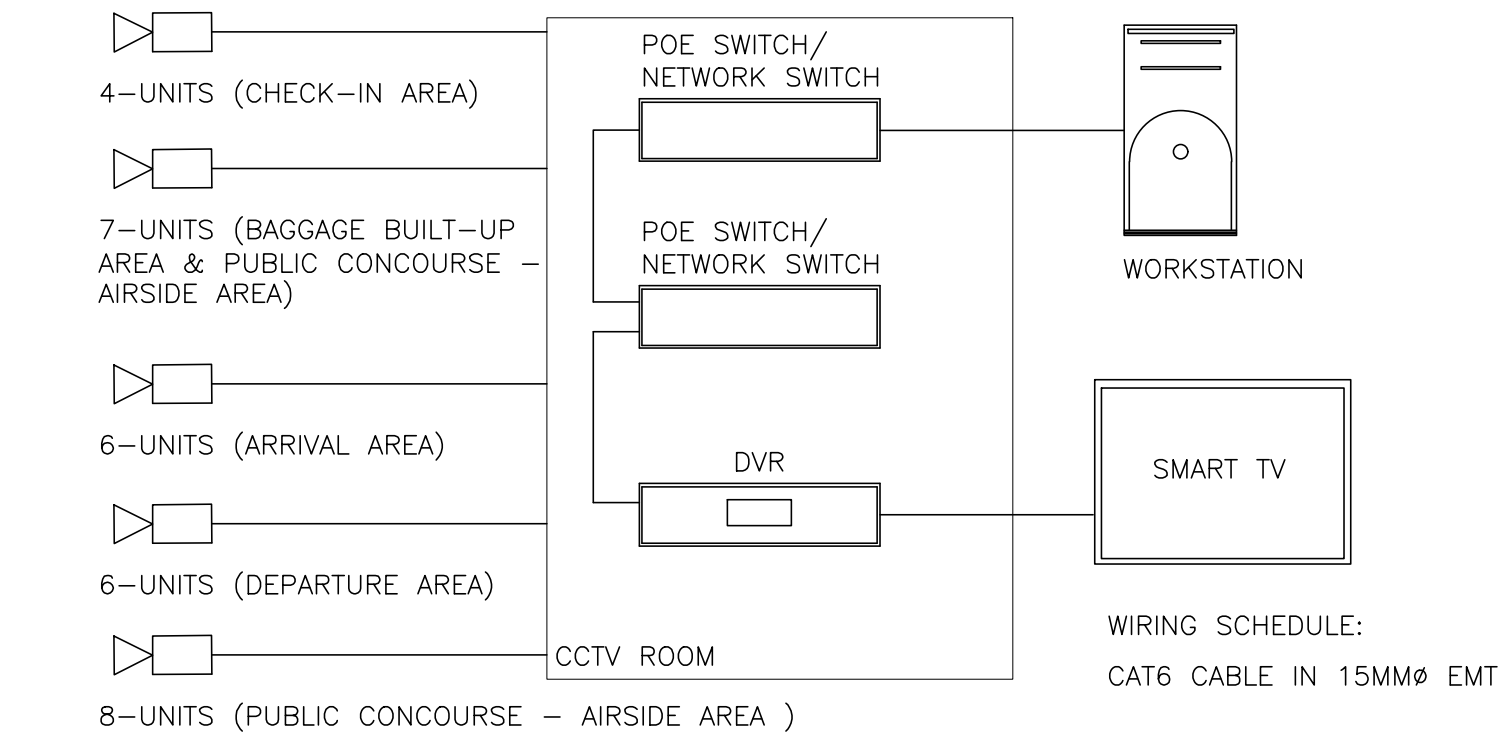




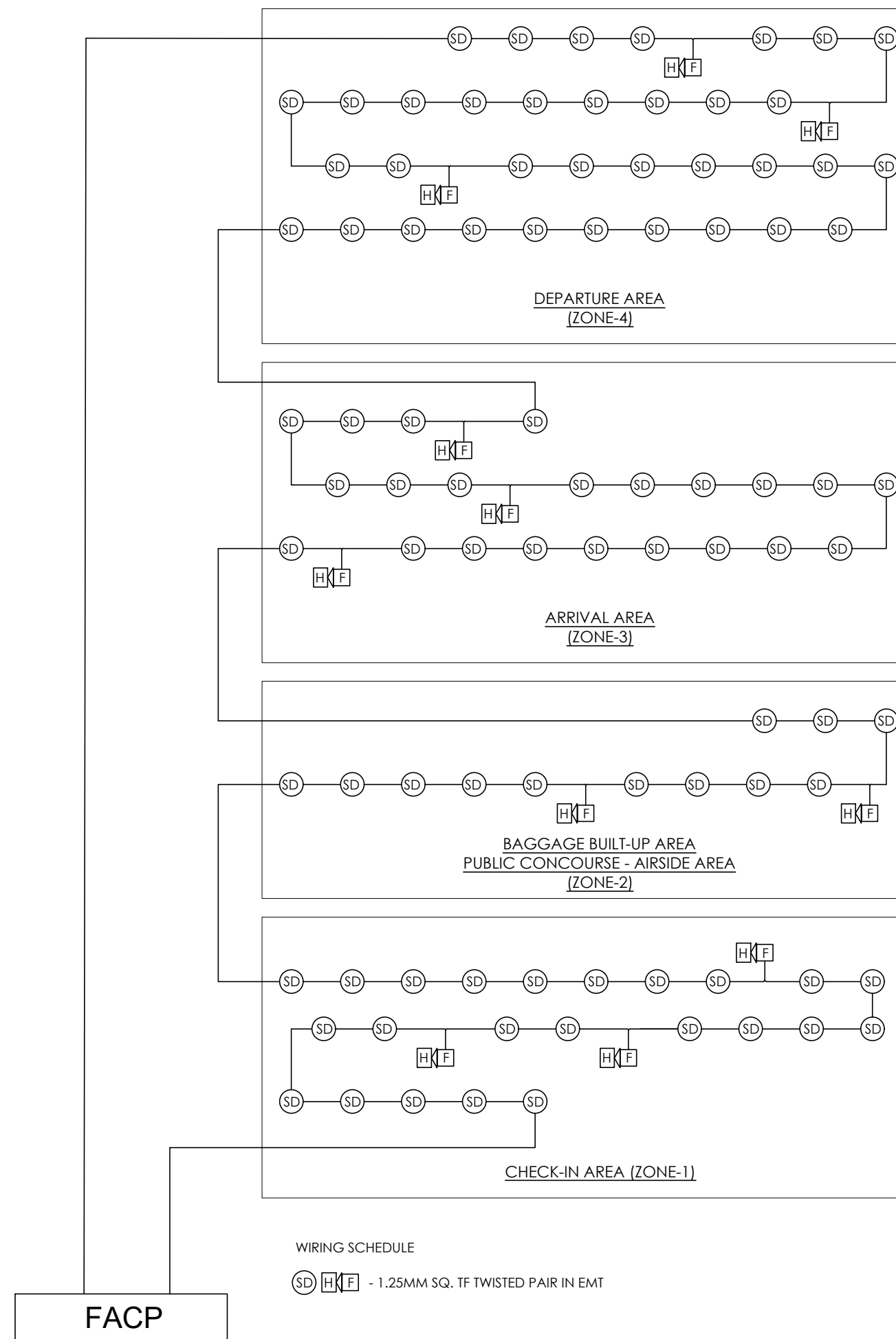
1  
E - SCALE NTS  
**VOICE AND DATA SYSTEM ONE LINE DIAGRAM**



3  
E - SCALE NTS  
**BGMPA SYSTEM ONE LINE DIAGRAM**



2  
E - SCALE NTS  
**CCTV SYSTEM ONE LINE DIAGRAM**



4  
E - SCALE NTS  
**FDAS SYSTEM ONE LINE DIAGRAM**



REPUBLIC OF THE PHILIPPINES

CIVIL AVIATION AUTHORITY OF THE PHILIPPINES  
AERODROME DEVELOPMENT AND MANAGEMENT SERVICE  
NAIA ROAD, 1300 PASAY CITY

THIS DRAWINGS AND DESIGN IS EXCLUSIVE PROPERTIES OF **CIVIL AVIATION AUTHORITY OF THE PHILIPPINES** AND SUCH MUST NOT BE REPRODUCED, EXHIBITED, LOANED NOR COPIED IN PART OR IN WHOLE WITHOUT PROPER PERMISSION AND/OR WRITTEN CONSENT FROM THE DIRECTOR GENERAL CAAP.

AERODROME DEVELOPMENT  
AND MANAGEMENT SERVICE

INFRASTRUCTURE DEVELOPMENT  
AND DESIGN DIVISION

DESIGN STAFF:	INITIAL / DATE
DESIGNED BY:	JPCJR
DRAWN BY:	RUAJR
CHECKED BY:	

REVIEWED BY:  
  
**EMERSON P. SALAS**  
Senior Aerodrome Engineer, IDDD - ADMS

SUBMITTED BY:  
  
**ARNEL F. BORLADO**  
Department Manager III, AED-ADMS

RECOMMEND APPROVAL:  
  
**LT COL VALENTINO A DIONELA PAF (RET)**  
Assistant Director General II, ADMS

APPROVED:  
  
**CAPTAIN JIM C. SYDIONGCO**  
Director General

CONCURRED:  
  
**JAIME ALBERTO C. MELO**  
Assistant Secretary for Aviation and Airports, DOTr

NOTES/REVISIONS:  
  
\_\_\_\_\_  
\_\_\_\_\_  
\_\_\_\_\_

PROJECT:  
  
**BUKIDNON AIRPORT  
DEVELOPMENT PROJECT  
(CONSTRUCTION OF PASSENGER  
TERMINAL BUILDING)**

LOCATION:  
  
**BUKIDNON AIRPORT**  
BRGY. MARAY MARAY, DON CARLOS,  
BUKIDNON

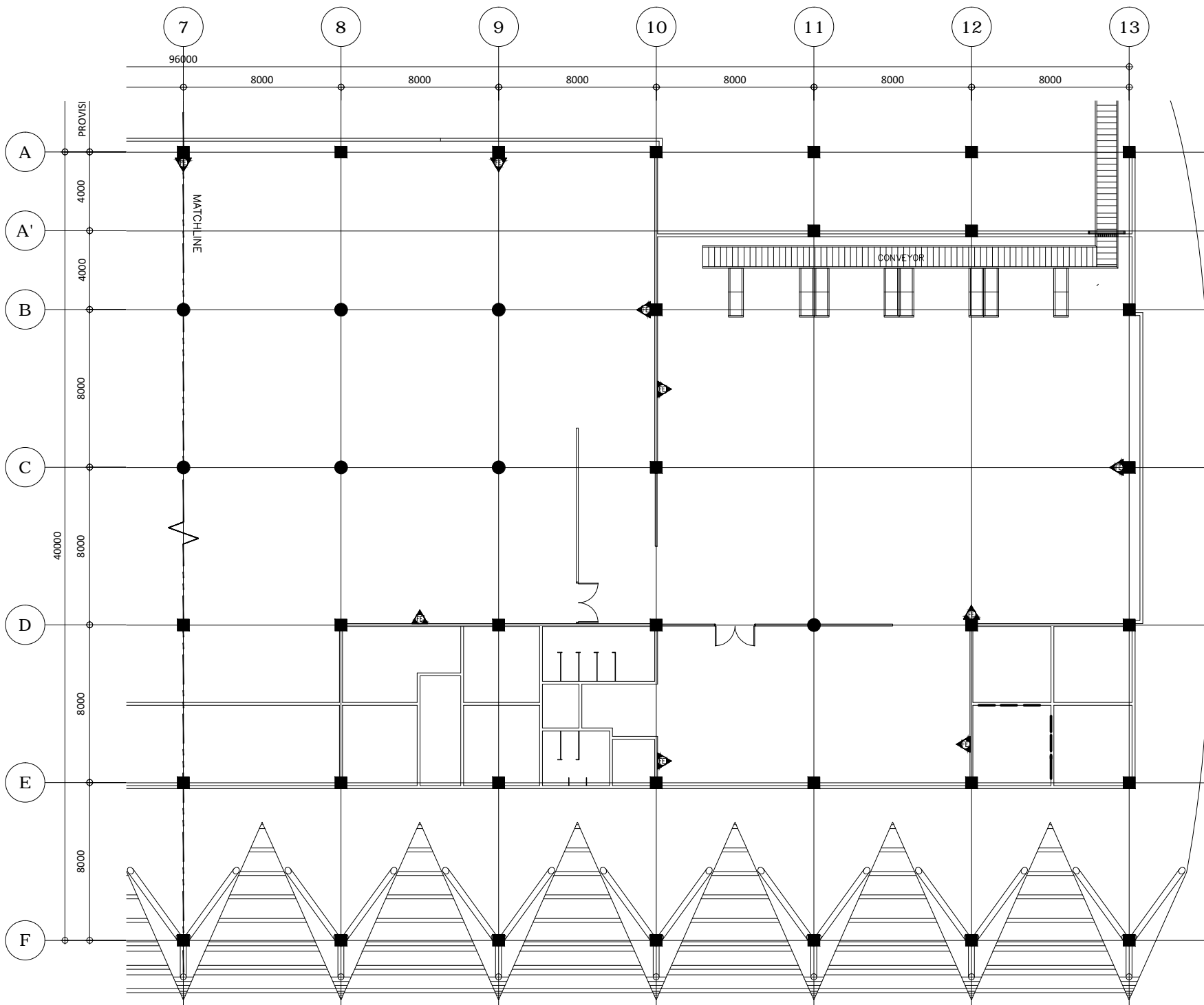
SHEET CONTENTS:  
  
• ONE LINE DIAGRAM

DRAWING SCALE:	SHEET NO:
AS SHOWN	E - 17

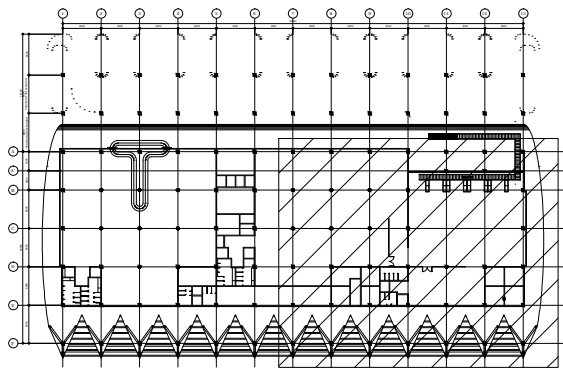
LEGEND:



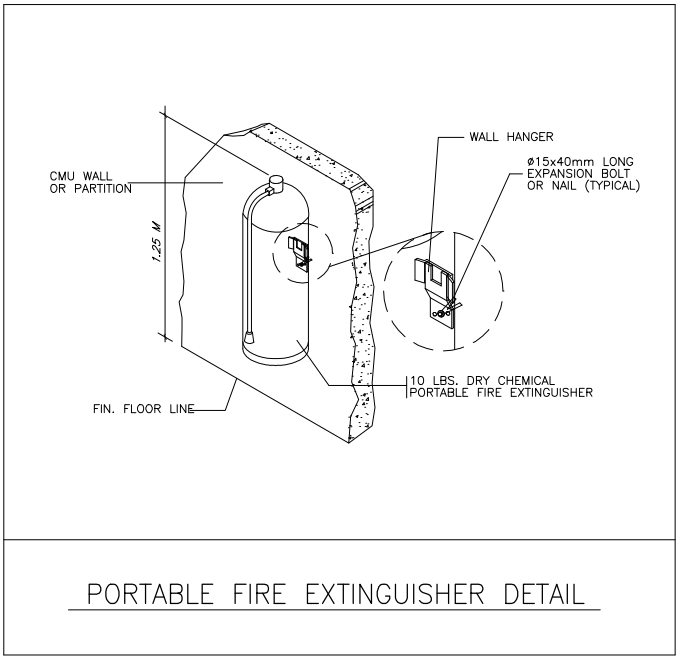
10 LBS. DRY CHEMICAL PORTABLE FIRE EXTINGUISHER  
W/ WALL HANGER



1 PARTIAL PORTABLE FIRE EXTINGUISHER LAYOUT-B  
FE-2/FE-2 SCALE: 1:150 MTS.



KEY PLAN



PORTABLE FIRE EXTINGUISHER DETAIL



CIVIL AVIATION AUTHORITY OF THE PHILIPPINES  
1388 ROAD, 1388 PASAY CITY

THIS DRAWING IS EXCLUSIVE PROPERTY OF CIVIL AVIATION AUTHORITY OF THE PHILIPPINES AND MUST NOT BE REPRODUCED, EXHIBITED, LOANED NOR COPIED IN PART OR IN WHOLE WITHOUT PROPER PERMISSION AND/OR WRITTEN CONSENT FROM THE DIRECTOR GENERAL CAAP.

AERODROME DEVELOPMENT AND  
MANAGEMENT SERVICE

INFRASTRUCTURE DEVELOPMENT AND  
DESIGN DIVISION

DESIGN STAFF:	INITIAL / DATE
DESIGNED BY:	
DRAWN BY:	JCMC
CHECKED BY:	RUAIJR

REVIEWED BY:

EMERSON P. SALAS  
Senior Aerodrome Engineer, IDDD - ADMS

SUBMITTED BY:

ARNEL F. BORLADO  
Department Manager III, AED-ADMS

RECOMMEND APPROVAL:

LT COL VALENTINO A DIONELA PAF (RET)  
Assistant Director General II, ADMS

APPROVED:

CAPTAIN JIM C. SYDIONGCO  
Director General

CONCURRED:

JAIME ALBERTO C. MELO  
Assistant Secretary for Aviation and Airports, DOTr

NOTES/REVISIONS:

PROJECT:  
BUKIDNON AIRPORT  
DEVELOPMENT PROJECT  
(CONSTRUCTION OF PASSENGER  
TERMINAL BUILDING)

LOCATION:  
BRGY. MARAY-MARAY, DON CARLOS,  
BUKIDNON

SHEET CONTENTS:

PARTIAL PORTABLE FIRE EXTINGUISHER  
LAYOUT-B  
KEY PLAN  
PORTABLE FIRE EXTINGUISHER DETAIL

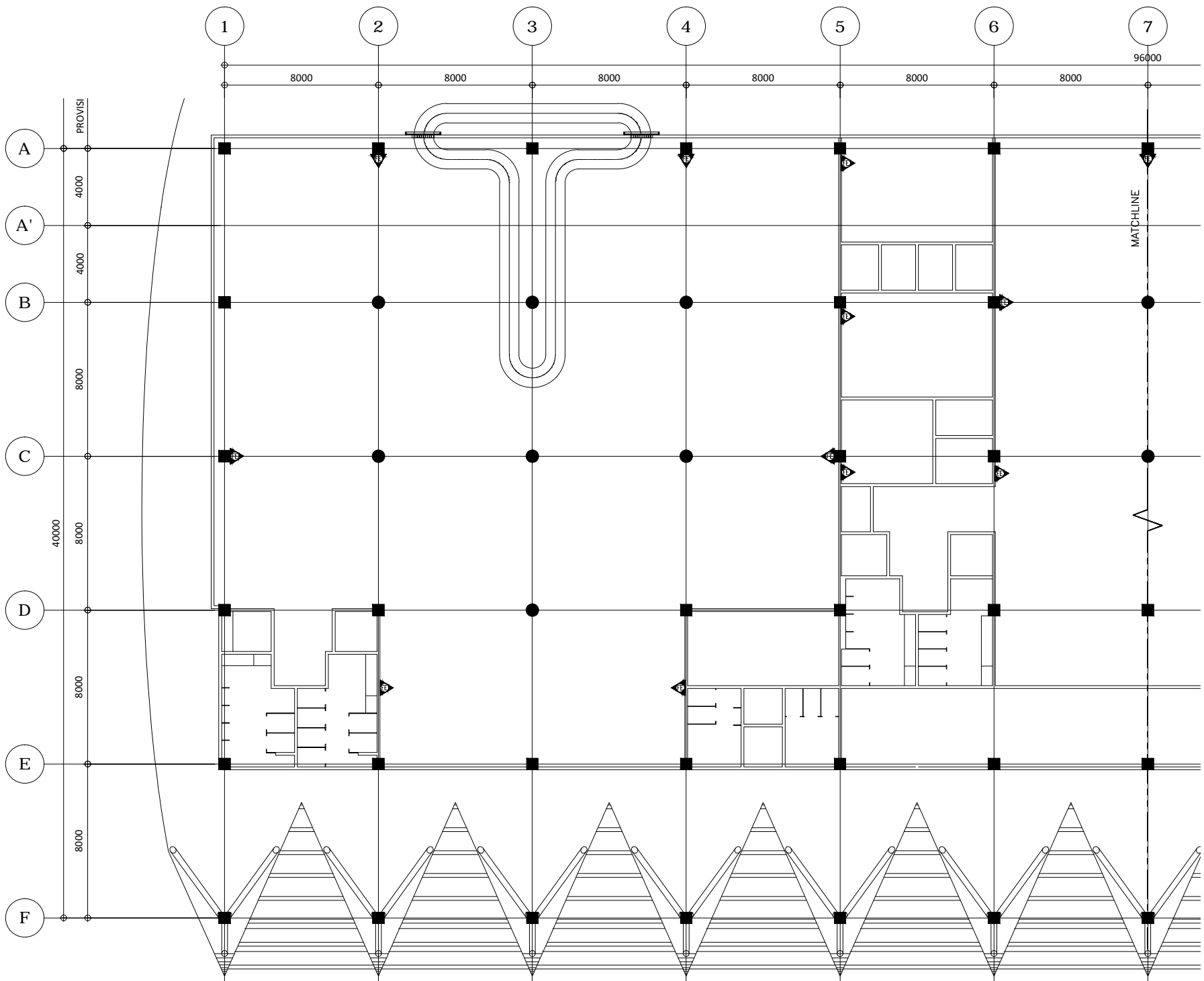
DRAWING SCALE:	SHEET NO:
AS SHOWN	FE - 2
	2



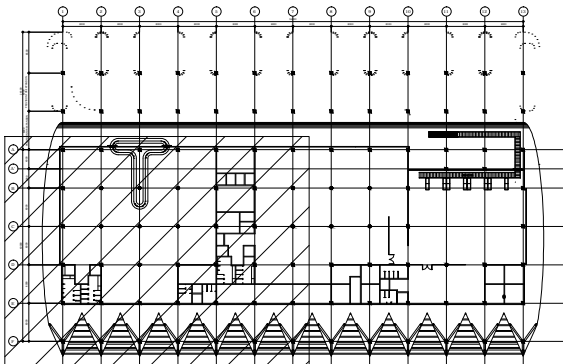
LEGEND:



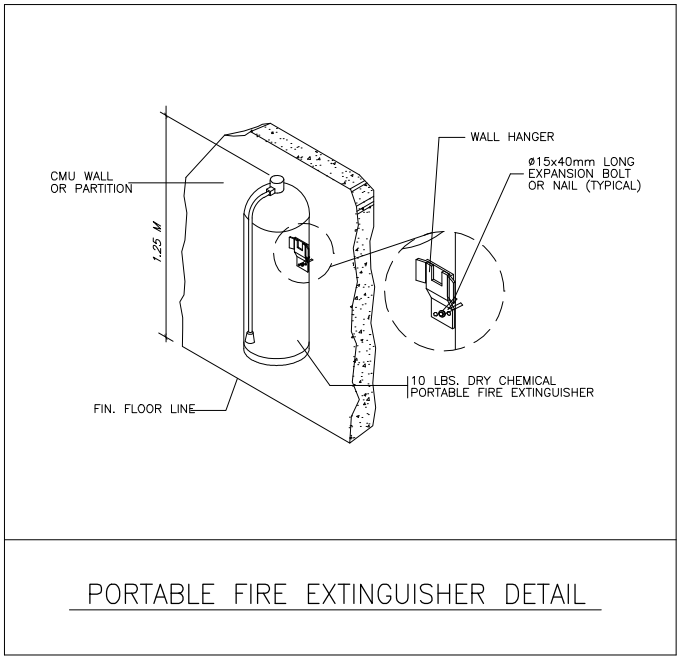
10 LBS. DRY CHEMICAL PORTABLE FIRE EXTINGUISHER  
W/ WALL HANGER



1 PARTIAL PORTABLE FIRE EXTINGUISHER LAYOUT-A  
FE-1 | FE-1 SCALE: 1:150 MTS.



KEY PLAN



PORTABLE FIRE EXTINGUISHER DETAIL



CIVIL AVIATION AUTHORITY OF THE PHILIPPINES  
138 PASAY CITY

THIS DRAWING IS EXCLUSIVE PROPERTY OF CIVIL AVIATION AUTHORITY OF THE PHILIPPINES AND MUST NOT BE REPRODUCED, EXHIBITED, LOANED NOR COPIED IN PART OR IN WHOLE WITHOUT PROPER PERMISSION AND/OR WRITTEN CONSENT FROM THE DIRECTOR GENERAL CAAP.

AERODROME DEVELOPMENT AND  
MANAGEMENT SERVICE

INFRASTRUCTURE DEVELOPMENT AND  
DESIGN DIVISION

DESIGN STAFF:	INITIAL / DATE
DESIGNED BY:	
DRAWN BY:	JCMC
CHECKED BY:	RUJAIR

REVIEWED BY:

EMERSON P. SALAS  
Senior Aerodrome Engineer, IDDD - ADMS

SUBMITTED BY:

ARNEL F. BORLADO  
Department Manager III, AED-ADMS

RECOMMEND APPROVAL:

LT COL VALENTINO A DIONELA PAF (RET)  
Assistant Director General II, ADMS

APPROVED:

CAPTAIN JIM C. SYDIONGCO  
Director General

CONCURRED:

JAIME ALBERTO C. MELO  
Assistant Secretary for Aviation and Airports, DOTr

NOTES/REVISIONS:

PROJECT:  
BUKIDNON AIRPORT  
DEVELOPMENT PROJECT  
(CONSTRUCTION OF PASSENGER  
TERMINAL BUILDING)

LOCATION:  
BRGY. MARAY-MARAY, DON CARLOS,  
BUKIDNON

SHEET CONTENTS:

PARTIAL PORTABLE FIRE EXTINGUISHER  
LAYOUT-A  
KEY PLAN  
PORTABLE FIRE EXTINGUISHER DETAIL

DRAWING SCALE:	SHEET NO:
AS SHOWN	FE - 1