



BID BULLETIN NO. 3
Bid No. 21-018-09 Charlie


24 September 2021

This Supplemental/Bid Bulletin is issued to modify, amend or clarify items in the Bidding Documents for the **BUKIDNON AIRPORT DEVELOPMENT PROJECT - PHASE III (Passenger Terminal Building, Runway Strip, Runway Extension, 2-units Pipe Conduit, Box Culvert and Runway Markings)**.

1. Attached in this bid bulletin are the following revised Bill of Materials & Cost Estimate Forms under Section VIII. Bill of Quantities, and the additional drawings for Items 1.02 Piling Works and 1.03 Pile Driving Works:
 - a. Item 311. Portland Cement Concrete Pavement (PCCP) (page 303) under Item C. Runway Extension.
 - b. Item 1.0 Concrete Works (3000 PSI) (page 305) under Item D. 2-Units Pipe Conduits.
 - c. Pile Driven Details for Items 1.02 Piling Works and 1.03 Pile Driving Works.

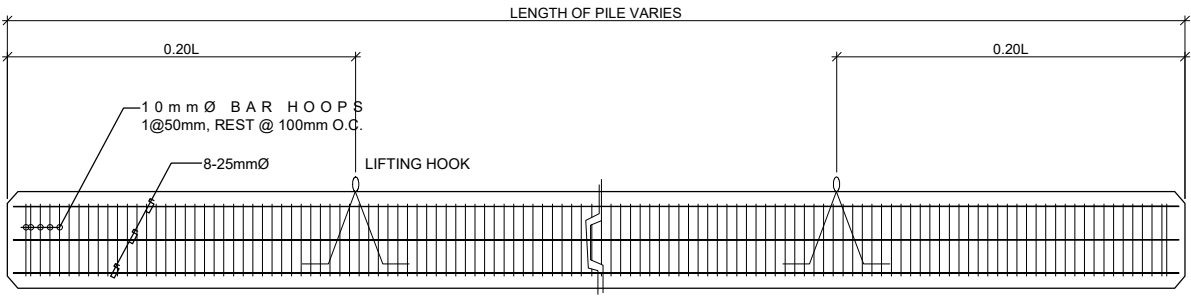
This Bid Bulletin should be included in the Technical Requirements and be marked accordingly. This serves as an integral part of the bidding documents of the project and non-inclusion of this Bid Bulletin in the Technical Requirements will constitute disqualification.

For the information and guidance of all concerned.

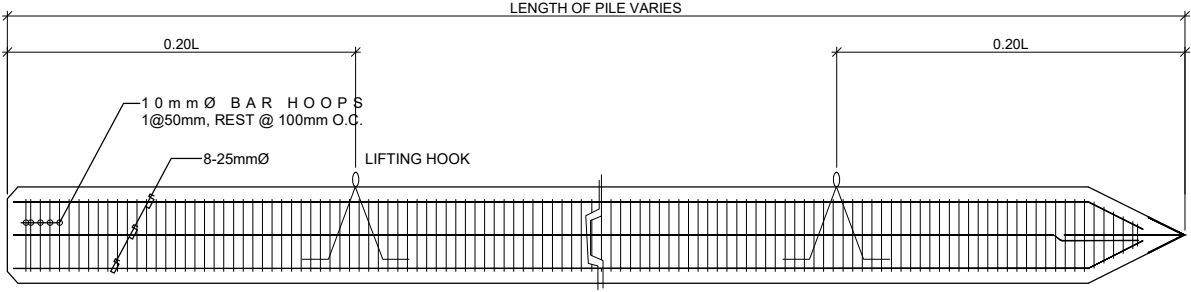

CAPTAIN DONALDO A. MENDOZA
Chairman, Bids and Awards Committee ✓

NAME OF PROJECT		BUKIDNON AIRPORT DEVELOPMENT PROJECT - PHASE III			
DESCRIPTION		RUNWAY EXTENSION (From Sta 1+560 to Sta 1+950)			
LOCATION		Brgy. Maray-Maray, Don Carlos, Bukidnon		QUANTITY	UNIT
SUBJECT		Bill of Materials & Cost Estimate		11700	sq.m.
ITEM	DESCRIPTION	QUANTITY	UNIT	UNIT COST	AMOUNT
311	Portland Cement Concrete Pavement (PCCP) (380mm thick)				
A	Material				
	Portland Cement, 40 kgs		bags		
	Sand		cu.m.		
	Gravel, 3/4"		cu.m.		
	32mm dia. Round Steel Bar, Gr.60		pcs.		
	10mm dia. Round Steel Bar, Gr.40		pcs.		
	#16 G.I. Tie Wres		kgs.		
	Steel Form (rental)		ln.m.		
	Curing Compound		liters		
	Joint Sealer		tins		
	25mm Polyethylene Backer Rod, 3.50 meters		pcs.		
	Form Oil		L		
	Grease/Tar		L		
	Red Oxide		L		
	4" Paint Roller		pcs.		
			Material Cost	
B	Labor	QTY	DUR. (DAYS)	RATE/DAY	
	Construction Foreman				
	Skilled Laborer				
	Common Laborer				
			Labor Cost	
C	Equipment	QTY	DUR. (DAYS)	RATE/DAY	
	Improvised Concrete Batching Plant (50 cu.m.)				
	Concrete Transl Mixer (5 cu.m)				
	Concrete Vibrator				
	Water Truck(1000 gal)				
	Concrete Screeder((5.5hp)				
	Concrete Saw, self-propelled 14 in				
	Bar Cutter, Single Phase				
	Payloader (1.5cu.m)				
			Equipment Cost	
A PCCP Works Total Material Cost					
B PCCP Works Total Labor Cost					
C PCCP Works Total Equipment Cost					
D PCCP Works Total Direct Cost					
INDIRECT COSTS					
1. OCM (0% - 8% of TDC)					
2. CONTRACTOR'S PROFIT (0% - 8% of TDC)					
E. TOTAL OCM & PROFIT					
F. VALUE ADDED TAX, (VAT) 5.0% of (D + E)					
G. TOTAL ESTIMATED INDIRECT COST (F + E), P					
H. TOTAL ESTIMATED UNIT INDIRECT COST (G / Quantity), P/Unit					
TOTAL ESTIMATED COST (D + G), P					
TOTAL ESTIMATED UNIT COST (Total Estimated Cost / Quantity), P/Unit					

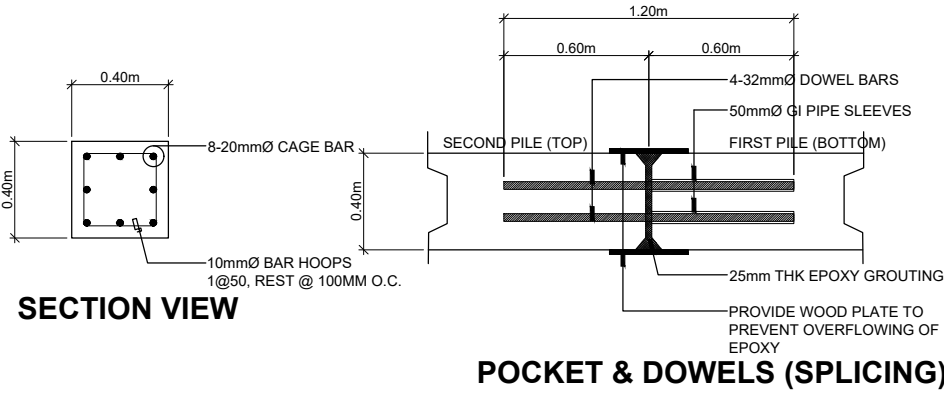
NAME OF PROJECT		:	BUKIDNON AIRPORT DEVELOPMENT PROJECT PHASE III			
DESCRIPTION		:	2 UNITS PIPE CONDUITS			
LOCATION		:	Brgy. Maray-Maray, Don Carlos, Bukidnon			QUANTITY
SUBJECT		:	Bill of Materials & Cost Estimate			UNIT
ITEM	DESCRIPTION		QUANTITY	UNIT	51.00	cu.m.
					UNIT COST	AMOUNT
1.00	Concrete Works (3000 PSI)					
A	Materials					
	Portland Cement (40kg/bag)			bags		
	Sand			cu.m.		
	Gravel 3/4			cu.m.		
	1/2" x 4' x 8' Ordinary Plywood			pcs.		
	2" x3" Form Lumber (Coco)			bdf.		
	Assorted Common Wire Nail			kgs		
	6"Ø Electrical PVC Pipe x 3m			pcs.		
			Material Cost		
B	Labor		# of Manpower	DUR. (DAYS)	RATE/DAY	
	Foreman					
	Skilled Laborer					
	Common Laborer					
			Labor Cost		
C	Equipment		# of EQPT	DUR. (DAYS)	RATE/DAY	
	One Bagger Concrete Mixer					
	Concrete Vibrator					
			Equipment Cost		
A	Total Concreting Works Material Cost					
B	Total Concreting Works Labor Cost					
C	Total Concreting Works Equipment Cost					
D	Total Concreting Works Direct Cost					
INDIRECT COSTS						
1. OCM (0% - 12% of TDC)						
2. CONTRACTOR's PROFIT (0% - 8% of TDC)						
E. TOTAL OCM & PROFIT						
F. VALUE ADDED TAX, (VAT) 5.0% of (D + E)						
G. TOTAL ESTIMATED INDIRECT COST (F + E), P						
H. TOTAL ESTIMATED UNIT INDIRECT COST (G / Quantity), P/Unit						
TOTAL ESTIMATED COST (D + G), P						
TOTAL ESTIMATED UNIT COST (Total Estimated Cost / Quantity), P/Unit						



TYPICAL DETAIL OF SECOND PILE (TOP)

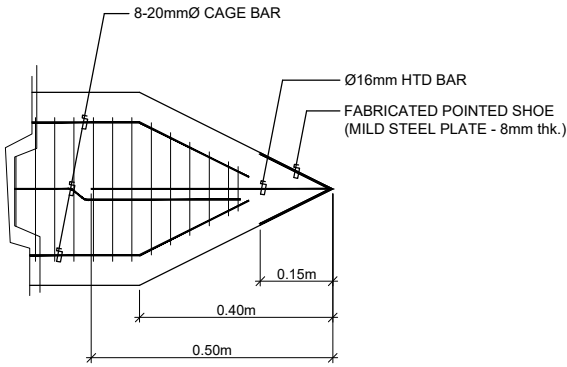


TYPICAL DETAIL OF FIRST PILE (BOTTOM)

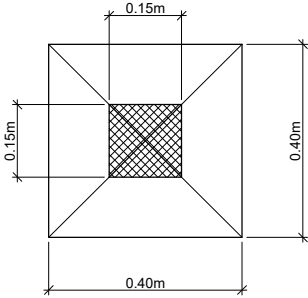


SECTION VIEW

POCKET & DOWELS (SPlicing)



BLOW-UP VIEW



BOTTOM VIEW

ADDITIONAL DRIVEN PILE DETAILS